



**TRILOBITE
TESTING, INC.**

DRILL STEM TEST REPORT

Vincent Oil Corporation
155 N Market STE 700
Wichita, Ks. 67202
ATTN: Jim Hall

28-28s-23w Ford, Co. Ks.

Frink-Brown 1-28

Job Ticket: 59803

DST#: 2

Test Start: 2015.06.26 @ 12:01:52

GENERAL INFORMATION:

Formation: **Base Penn**

Deviated: No Whipstock: 0.00 ft (KB)

Time Tool Opened: 14:55:37

Time Test Ended: 22:17:52

Test Type: Conventional Bottom Hole (Reset)

Tester: Matt Smith

Unit No: 53

Interval: 5034.00 ft (KB) To 5118.00 ft (KB) (TVD)

Total Depth: 5118.00 ft (KB) (TVD)

Hole Diameter: 7.88 inches Hole Condition: Fair

Reference Elevations: 2476.00 ft (KB)

2463.00 ft (CF)

KB to GR/CF: 13.00 ft

Serial #: 8931

Inside

Press @ Run Depth: 134.56 psig @ 5035.00 ft (KB)

Start Date: 2015.06.26

End Date: 2015.06.26

Start Time: 12:01:57

End Time: 22:17:52

Capacity: 8000.00 psig

Last Calib.: 2015.06.26

Time On Btm: 2015.06.26 @ 14:52:37

Time Off Btm: 2015.06.26 @ 19:15:07

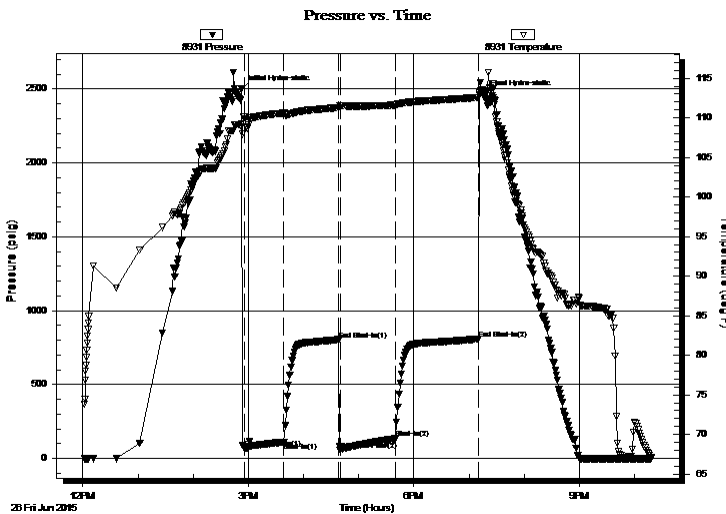
TEST COMMENT: IF: Fair - Strong blow . B.O.B. in 1 1/2 mins. G.T.S. in 42 mins.

IS: No blow .

FF: Strong blow . B.O.B. & G.T.S., immediately. Gauged gas, see gas report.

FS: No blow . Bled off in 25 mins.

PRESSURE SUMMARY



Time (Min.)	Pressure (psig)	Temp (deg F)	Annotation
0	2498.75	109.26	Initial Hydro-static
3	65.70	110.11	Open To Flow (1)
46	110.78	110.60	Shut-In(1)
106	803.77	111.30	End Shut-In(1)
107	56.02	111.54	Open To Flow (2)
168	134.56	111.62	Shut-In(2)
258	807.99	112.60	End Shut-In(2)
263	2463.31	113.46	Final Hydro-static

Recovery

Length (ft)	Description	Volume (bbl)
60.00	Oil Spec GM 3%g 97%m	0.30
20.00	Oil Spec GM 3%g 97%m	0.10
0.00	G.I.P. G.T.S. 100%g	0.00

Gas Rates

	Choke (inches)	Pressure (psig)	Gas Rate (Mcf/d)
First Gas Rate	0.13	10.00	9.13
Last Gas Rate	0.13	54.00	25.60
Max. Gas Rate	0.13	54.00	25.60

* Recovery from multiple tests



**TRILOBITE
TESTING, INC.**

DRILL STEM TEST REPORT

FLUID SUMMARY

Vincent Oil Corporation
155 N Market STE 700
Wichita, Ks. 67202
ATTN: Jim Hall

28-28s-23w Ford, Co. Ks.
Frink-Brown 1-28
Job Ticket: 59803 **DST#: 2**
Test Start: 2015.06.26 @ 12:01:52

Mud and Cushion Information

Mud Type: Gel Chem	Cushion Type:	Oil API:	deg API
Mud Weight: 9.00 lb/gal	Cushion Length: ft	Water Salinity:	8000 ppm
Viscosity: 56.00 sec/qt	Cushion Volume: bbl		
Water Loss: 9.78 in ³	Gas Cushion Type:		
Resistivity: ohm.m	Gas Cushion Pressure: psig		
Salinity: 8000.00 ppm			
Filter Cake: 0.20 inches			

Recovery Information

Recovery Table

Length ft	Description	Volume bbl
60.00	Oil Spec GM 3%g 97%m	0.295
20.00	Oil Spec GM 3%g 97%m	0.098
0.00	G.I.P. G.T.S. 100%g	0.000

Total Length: 80.00 ft Total Volume: 0.393 bbl

Num Fluid Samples: 2 Num Gas Bombs: 0 Serial #: MAS Pratt

Laboratory Name: Caraway Laboratory Location: Liberal, KS

Recovery Comments: Took a gas sample from both opens.



**TRILOBITE
TESTING, INC.**

DRILL STEM TEST REPORT

GAS RATES

Vincent Oil Corporation

28-28s-23w Ford, Co. Ks.

155 N Market STE 700
Wichita, Ks. 67202

Frink-Brown 1-28

Job Ticket: 59803

DST#: 2

ATTN: Jim Hall

Test Start: 2015.06.26 @ 12:01:52

Gas Rates Information

Temperature: 59 (deg F)
Relative Density: 0.65
Z Factor: 0.8

Gas Rates Table

Flow Period	Elapsed Time	Choke (inches)	Pressure (psig)	Gas Rate (Mcf/d)
2	10	0.13	10.00	9.13
2	20	0.13	21.00	13.25
2	30	0.13	30.00	16.62
2	40	0.13	39.00	19.99
2	50	0.13	45.00	22.23
2	60	0.13	54.00	25.60

Serial #: 8931

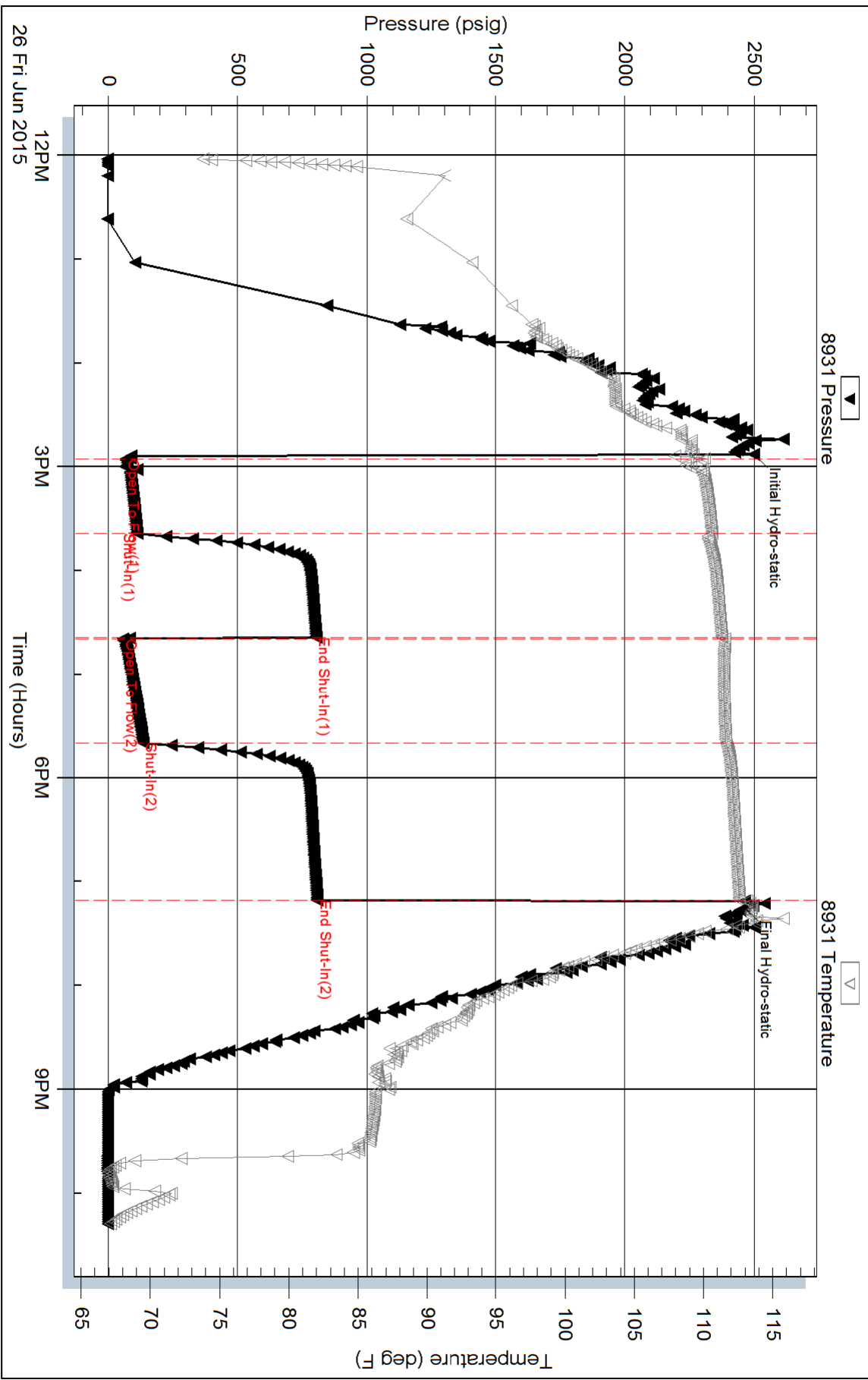
Inside

Vincent Oil Corporation

Frink-Brown 1-28

DST Test Number: 2

Pressure vs. Time



Trilobite Testing, Inc

Ref. No: 59803

Printed: 2015.06.26 @ 22:55:00