

LITHOLOGY STRIP LOG

WellSight Systems

Scale 1:240 (5"=100') Imperial
Measured Depth Log

Well Name: VINCENT OIL CORP. FRINK-BROWN #1-28
API: 15-057-20963-00-00
Location: SE NE SE SW SEC. 28, T28 S, R 23 W, FORD CO. KANSAS
License Number: 5004
Spud Date: JUNE 18th, 2015
Surface Coordinates: 760' FSL, 2,610' FWL
Region: MULBERRY CRK.
Drilling Completed: JUNE 29th, 2015

Bottom Hole
Coordinates:
Ground Elevation (ft): 2,463' K.B. Elevation (ft): 2,476'
Logged Interval (ft): 4,100' To: 5,300' Total Depth (ft): 5,300'
Formation: MISSISSIPPI
Type of Drilling Fluid: NATIVE MUD TO 3,787'. CHEMICAL GEL TO RTD

Printed by MUD.LOG from WellSight Systems 1-800-447-1534 www.WellSight.com

OPERATOR

Company: VINCENT OIL CORP.
Address: 155 N. MARKET STE 700
WICHITA, KANSAS 67202-1821
OFFICE; 316-262-3573

GEOLOGIST

Name: Jame R. Hall (Well Site Supervision)
Company: Black Gold Petroleum
Address: 5530 N. Sedgwick
Wichita, Kansas 67204-1828
Office: 316-838-2574, cell: 316-217-1223

Comments

Drilling contractor: DUKE, Rig #9, Tool Pusher; Emigdio Rojas.

Surface Casing: 8 5/8" 23# set at 666' w/250sx, cement, did circulate.

Daily Activity @ 06:00

6/18/15; Moved on location, rig up and spud.

6/19/15; Drilled to 670' with 12 1/4" bit, ran 8 5/8" csg. and preparing to run cement.

6/20/15; Drilling @ 1,740', with native mud, ran survey @ 1,671'.

6/21/15; Drilling @ 2,828', with native mud.

6/22/15; Drilling @ 3,540', with native mud.

6/23/15; Drilling @ 4,230', mud up @ 3,787' with chemical-gel fresh water system.

6/24/15; Drilling @ 4,630', trip for new bit @ 4,568', pipe strap 1.48' short, ran survey 1 deg., trip back in with junk basket prior to drilling ahead.

6/25/15; @ 4,989' short trip prior to DST #1 4,953 - 4,989' (36').

6/26/15; Drilling Lower Penn. @ 5,090'. After DST #1 removed junk basket from drilling string.

6/27/15; @5,146' tripping out for DST #3 5,113' - 5,146' (33'). Ran DST #2 5,034' - 5,118' (84').

6/28/15; 5,165' Ran DST #3. Running DST #4 5,150' - 5,165' (15').

6/29/15; 5,200' running DST #5 5,172' - 5,200' (28').

6/30/15; 5,300 RTD, 5,298' E-LOG TD, ran open hole logs, and rig is making ready to run 4.5" production casing.

Deviation Surveys: 1deg. @ 670', 1.25 deg. @ 1,671', 1.5 deg. @ 3,661', 1 deg. @ 4,568', 1 deg. @ 4,989', 1 deg. @ 5,146', 1 deg. @ 5,200'.

Bit Record:

#1 12 1/4" out @ 670'.

#2 7 7/8" JZ HA20-Q in @ 670', out @ 4,568', made 3,898',

#3 7 7/8" JZ QX 28 in @ 4,568', out @ 5,300', made 732'.

Drilling time commenced: @ 4,100'. Maximum 10' wet and dry samples commenced: @ 4,150' to RTD (5,300'). Samples delivered to Kansas Geological Sample Library at Wichita, Kansas.

Gas Detector: Blue Stem Lab, unit #5992. Digital Unit, (commenced @ 4,100' and finished @ 5,300').

Mud System: Mud-Co/Service Mud. Chemical Gel system @ 3,787', Mud Engineer: Justen Whitin (Dodge City Office).

DST's: Trilobite Testing Hays, Kansas. Tester; Matt Smith (Pratt Office).

Open Hole Logs: , Casedhole Solutions, Hays, Kansas,

Logging Engineer: Blake Waggoner.

DIL, CDL/CNL/PE (TD to 4,150'), Mico Log (TD to 4,150), SONIC (TD to base of surface casing).

Sample tops are placed on this Plotted Geo. Report, with the reference wells "A" Vincent Oil Corp. Frink #1-28, 40'FSL, 1,620' FWL 28-T28S-R23W, and "B" Vincent Oil Corp. Brown #2-28 SE SE NW SE 28-T28S-R23W. Tops datum differences shown.

This Strip Log has to be shifted 4' shallow to match the Open Hole Log.

DSTs

DST #1 4,953'-4,989' (36'), 30-60-60-120, IH 2536, IF 21-65, fair building to BOB in 29mins, ISI 845, no blow, FF 56-90, fair building to BOB 4.5mins. FSI 859, weak blow in 35min building to 1/2", then dead at 1hr 15mins., FH 2403, Rec; 1728'GIP, 20' GOCM (10%gas,10%oil, 80%mud), 60' MWOCG (74%gas,15%oil, 6%water, 5%mud), 60' MWOCG (63%gas,27%oil, 7%water, 3%mud), 60' MWOCG (55%gas, 25%oil, 17%water, 3%mud). (200' total fluid recovered), BHT 113deg F, Rw 0.16 @ 84 F (Rwa 0.1189 @ 113 F), chl 38,000ppm, chl mud 8,600ppm.

DST #2 5,034' - 5,118' (84'), 45-60-60-90, IH 2499, IF 66-111, fair to strong BOB 1.5min (GTS 42min-orange flame), ISI 804, no blow, FF 56-135, BOB, (GTS immd.-orange flame), Gauged; 30min 9.1mcf, 20min 13.3mcf, 30min 16.6mcf, 40min 20.0mcf, 50min 22.2mcf, 60min 25.6mcf, (gas sample taken), FSI 808, no blow, FH 2463, Rec: 4,781' GIP, 80' oil specked Gsy Mud (3%gas, 97%mud), BHT 113 F.

DST #3 5,113' - 5,146' (33'), 45-90-90-120, IH 2535, IF 88-88, BOB 30sec, GTS 15min, Gauged; 20min 662.3mcf, 30min 428mcf, 40min 396.7mcf,45min 381.1mcf, ISI 832 no blow, FF 130-91, BOB immd, GTS immd, Gauged; 10min 443.6mcf, 20min 428mcf, 30min 412.4mcf, 40min 412.4mcf, 50min 396.7mcf, 60min 396.7mcf, 70min 396.7mcf, 80min 396.7mcf, 90min 396.7mcf (orange flame, sample taken), FSI 816 no blow, FH 2438, Rec; 4,860' GIP, 5' mud, 60' gas cut mud, (2%gas, 98%mud), BHT 112 F.

DST #4 5,150' - 5,165' (15'), 45-90-60-120, IH 2590, IF 65-106, BOB 20sec. GTS 16min, Gauged 20min 771.6mcf, 30min 506.1mcf, 40min 490.5mcf, 45min 490.5mcf, ISI 845 no blow, FF 80-109, BOB & GTS immd., Gauged 10min 506.1mcf, 20min 537.3mcf, 30min 552.9mcf, 40min 560.8mcf, 50min 568.6mcf, 60min 568.6mcf, (gas sample taken, blue yellow flame), FH 2419, Rec; 4,887' GIP, 10' gas cut mud (2%gas, 98%mud), 60' gsy water cut mud (5%gas,15%water, 80%mud), BHT 109 F, Rw 0.24 @97F (Rwa @ BHT 0.213), chl 20,000ppm, chl mud 10,000ppm.

DST #5 5,172' - 5,200' (28'), 30-60-60-120, IH 2525, IF 29-47 BOB 22min, FSI 368 no blow, FF 48-88 BOB 12min, FSI 963 no blow, FH 2404, Rec; 448' gas in pipe, 10 oil spected mud (trace oil, 100% mud), 60' watery oil cut gassy mud (14%gas, 5%oil, 1% water, 80%mud), 60' oil water cut gassy mud (17%gas, 7%oil, 12%water, 64%mud), Total fluid recovered 130', BHT 114 F, Rw 0.18 @ 79 F (Rwa 0.125 @ BHT), chl 36,000ppm, drilling mud 10,000 ppm.

Serial #: 8931

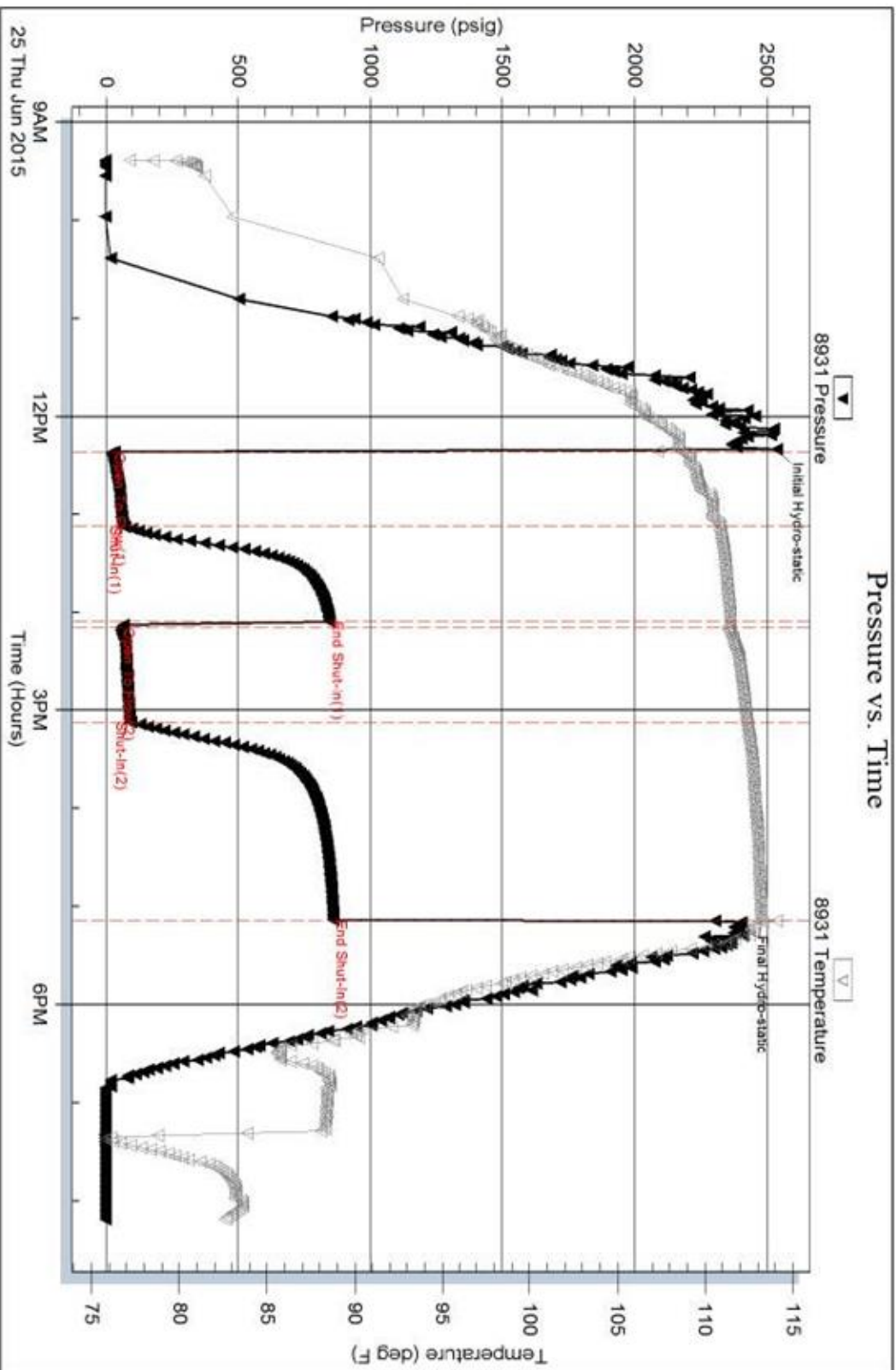
Inside

Vincent Oil Corporation

Frnk-Bow n-1-28

DST Test Number: 1

Pressure vs. Time



Serial #: 8931

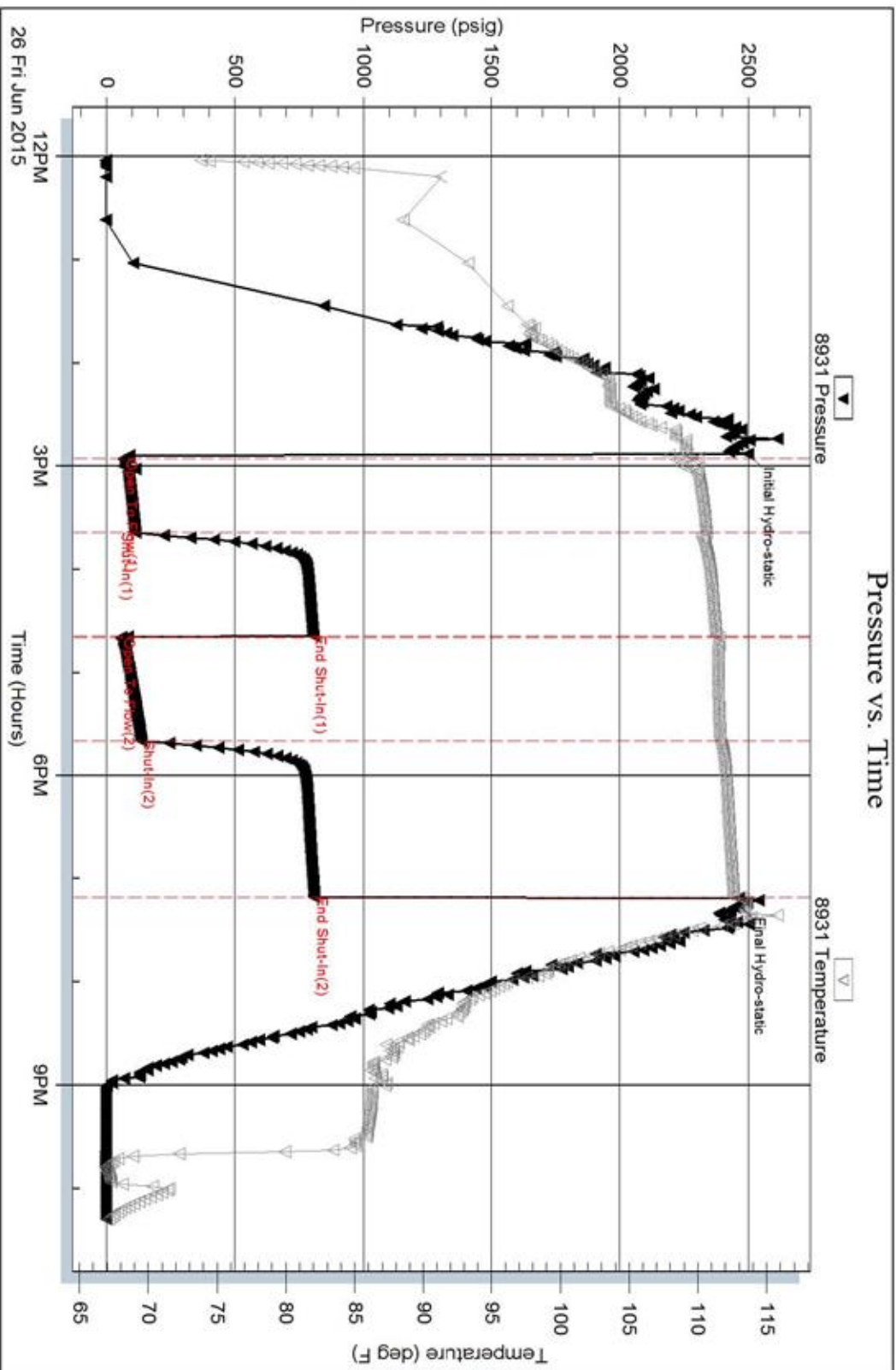
Inside

Vincent Oil Corporation

Frink-Bow n 1-28

DST Test Number 2

Pressure vs. Time



Triobite Testing, Inc

Ref. No: 59803

Printed: 2015.06.26 @ 22:55:00

Serial #: 8931

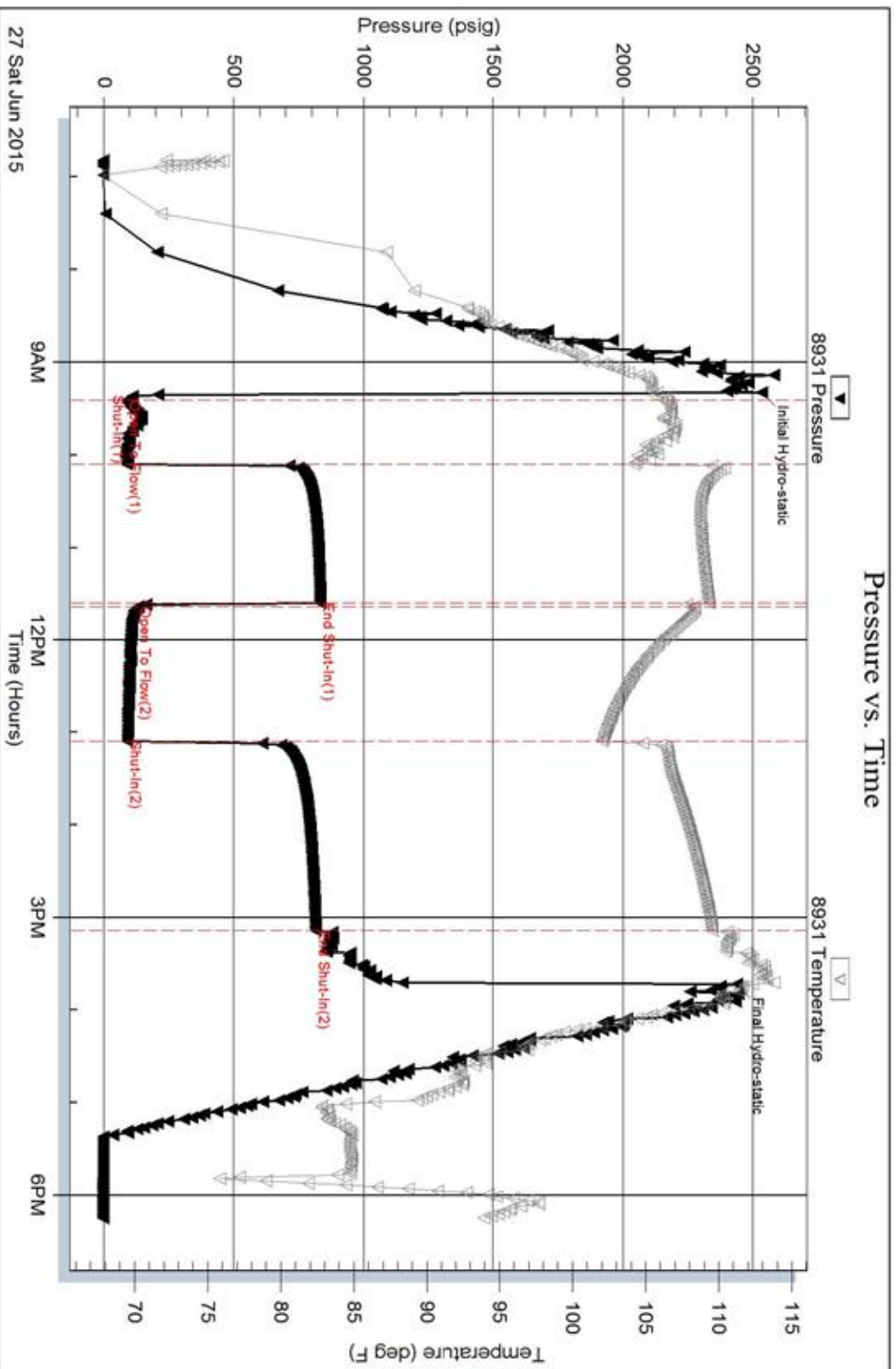
Inside

Vincent Oil Corporation

Frink-Brown 1-28

DST Test Number: 3

Pressure vs. Time



Triobite Testing, Inc

Ref. No: 59804

Printed: 2015.06.27 @ 22:42:27

Serial #: 8931

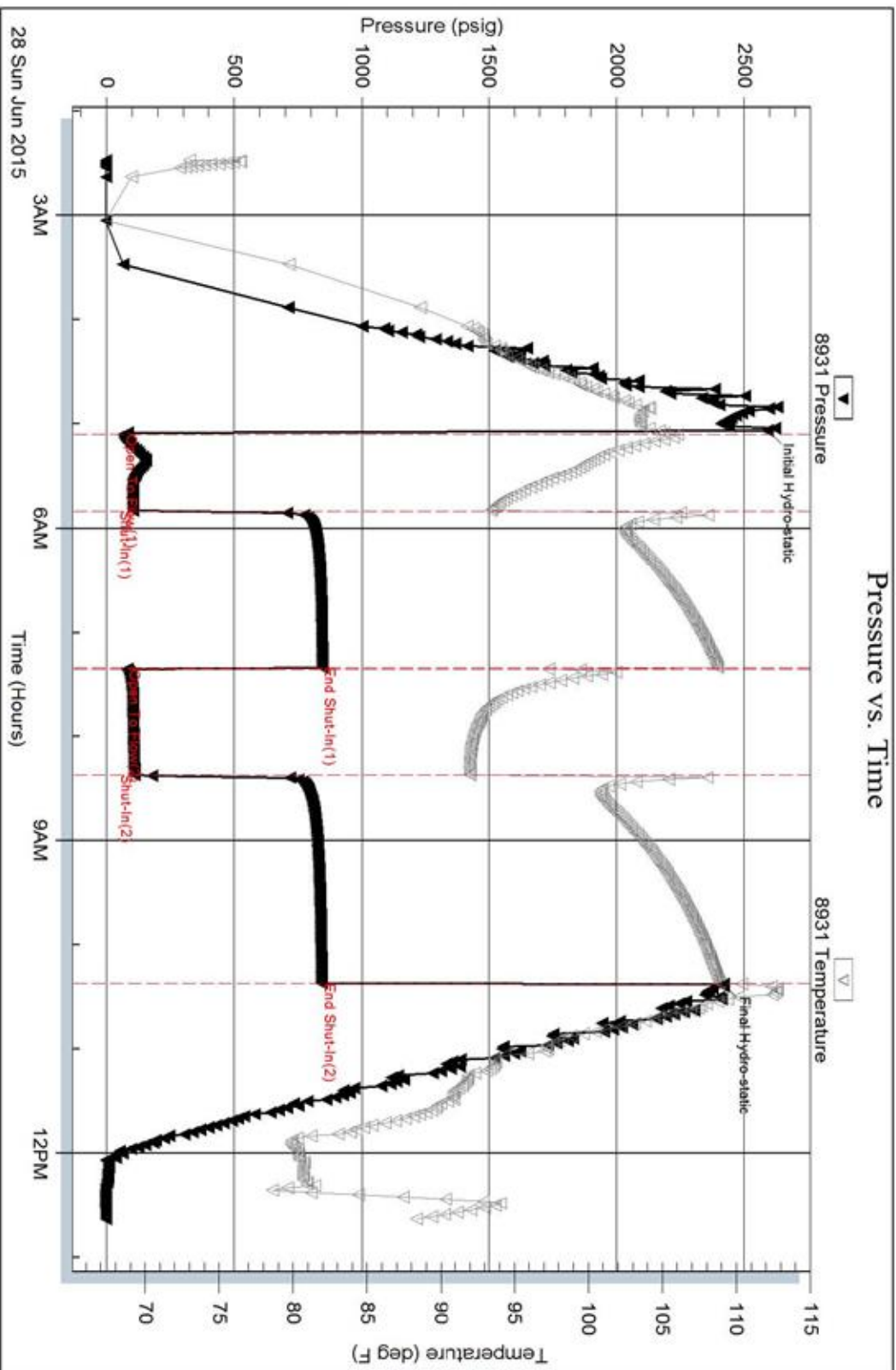
Inside

Vincent Oil Corporation

Frink-Bow n 1-28

DST Test Number: 4

Pressure vs. Time



Triobite Testing, Inc

Ref. No: 59805

Printed: 2015.06.28 @ 22:49:23

Serial #: 8931

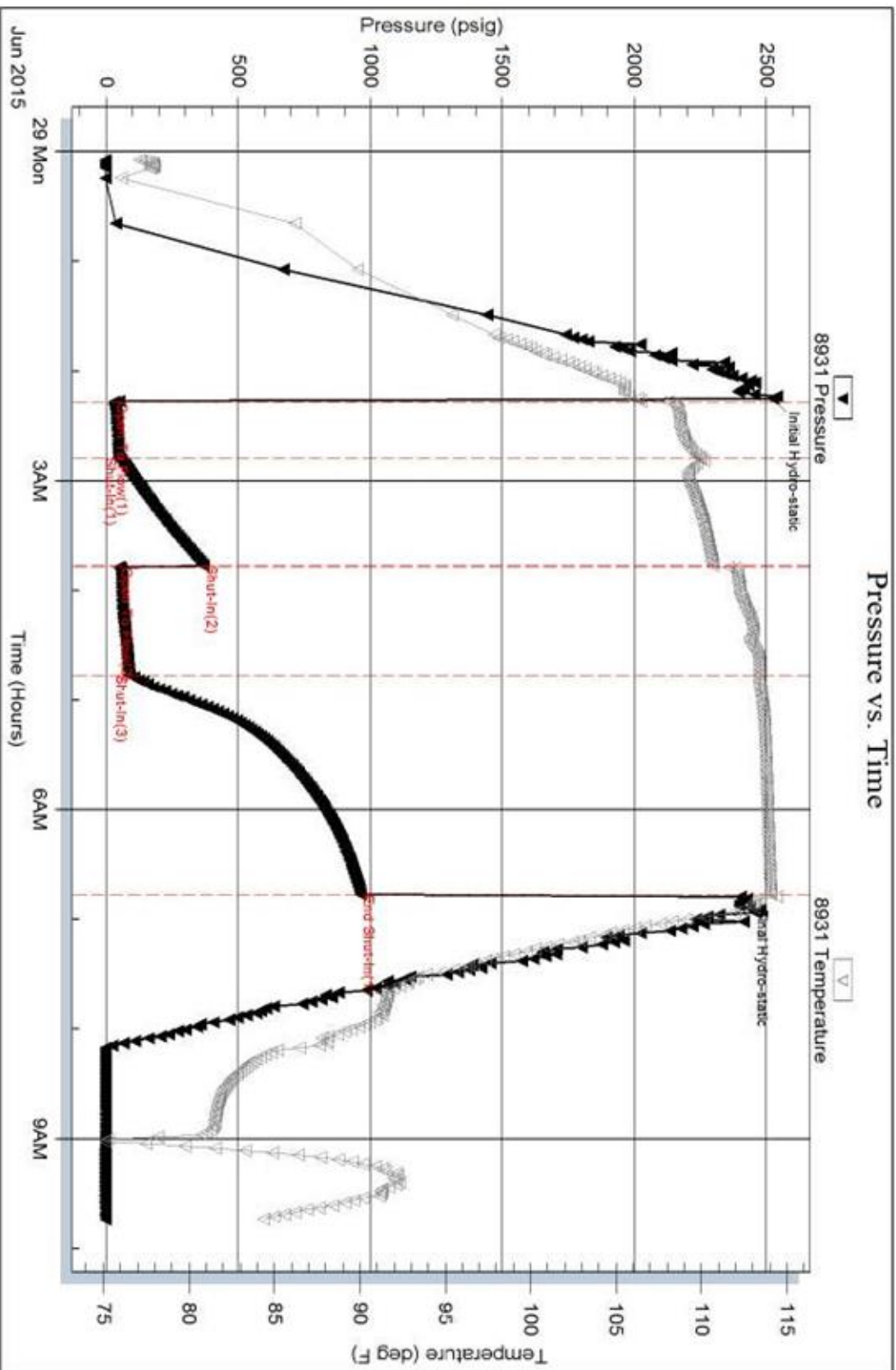
Inside

Vincent Oil Corporation

Frick-Bow n 1-28

DST Test Number: 5

Pressure vs. Time



WELL SITE OPERATIONS / JIM HALL SUPERVISOR

OPERATOR:

Vincent Oil Corp.

WELL REFERENCE SHEET

SUBJECT WELL:

Frink-Brown #1-28

SUBJECT WELL LOCATION:

SE NE SE SW Sec 28-T28S-R23W

SUBJECT WELL DATUM:

2,476

REF. WELL 'A'

Frink #1-28 40'FSL, 1620'FWL 28-28S-23W

DATUM:

2,526

REF. WELL 'B'

Brown #2-28 SE-SE-NW-SE 28-28S-23W

DATUM:

2,483

E-LOG TOPS

**SUBJECT WELL:
ZONE**

WELL 'A'

WELL 'B'

	DEPTH	DATUM	DEPTH	DATUM	REF.	DEPTH	DATUM	REF.	
HEEB.	4,267	-1,791	4,322	-1,796		5	4,292	-1,809	18
Brown Ls.	4,403	-1,927	4,459	-1,933		6	4,428	-1,945	18
Lansing	4,412	-1,936	4,469	-1,943		7	4,437	-1,954	18
Stark Sh	4,753	-2,277	4,808	-2,282		5	4,772	-2,289	12
Hushp. Sh	4,794	-2,318	4,847	-2,321		3	4,811	-2,328	10
Marmaton	4,900	-2,424	4,954	-2,428		4	4,921	-2,438	14
PAWNEE	4,971	-2,495	5,025	-2,499		4	4,987	-2,504	9
Labette Sh	4,996	-2,520	5,051	-2,525		5	5,014	-2,531	11
CKE Sh	5,016	-2,540	5,075	-2,549		9	5,033	-2,550	10
2nd CKE	5,042	-2,566	5,103	-2,577		11	5,061	-2,578	12
B/Penn.	5,117	-2,641	5,172	-2,646		5	5,128	-2,645	4
Sd / Chrt	5,235	-2,759	5,192	-2,666		7	5,143	-2,660	1
MISS.	5,143	-2,667	5,196	-2,670		3	5,157	-2,674	7
RTD	5,300	-2,824							
LTD	5,298	-2,822							





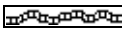

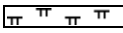

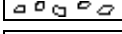



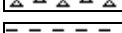



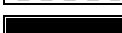
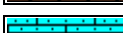





Qualifiers

CARBONATE CLASSIFICATION:

AFTER DUNHAM: GRAIN; any fossil, fossil fragment, sand grain, or other rock fragment within the rock. **MUDSTONE;** muddy carbonate rocks containing less than 10% grains. **WACKESTONE;** mud supported carbonate rocks with more than 10% grains. **PACKSTONE;** grain supported muddy carbonate rocks. **GRAINSTONE;** mud free carbonate rock, grain supported. **BOUNDSTONE;** carbonate rock bound together at deposition (coral, etc.). **CRYSTALLINE CARBONATE;** carbonate rock retaining to little of their depositional texture to be classified.

Qualifiers; (Fossils, Minerals, Shows, Porosity, etc.) Rare = less than 1% of sample total, Trace = less than 5% of sample total, Greater than 5% an estimate of total percentage.

ROCK TYPES

 Anhy	 Congl	 Lmst	 Black sh
 Bent	 Sdy dolo	 Mrlst	 Gry sh
 Brec	 Shy dolo	 Salt	 Shale
 Cht	 Dol	 Shale	 Shysltst
 Clyst	 Gyp	 Sltst	 Sltysht
 Coal	 Sdy lmst	 Ss	

ACCESSORIES

MINERAL

- Anhy
- Arg
- Bent
- Bit
- Brecfrag
- Calc
- Carb
- Chtdk
- Chtlt
- Dol
- Ferrpel
- Ferr
- Glau
- Gyp
- Marl
- Nodule
- Phos
- Pyr
- Salt
- Sandy
- Silt

- Chlorite
- Dol
- Sand
- Silty

FOSSIL

- Algae
- Amph
- Belm
- Bioclst
- Brach
- Bryozoa
- Cephal
- Coral
- Crin
- Echin
- Fish
- Foram
- Fossil
- Gastro
- Oolite
- Ostra

- Pelec
- Pelloidal
- Pisolite
- Plant
- Strom
- Fuss
- Oomoldic

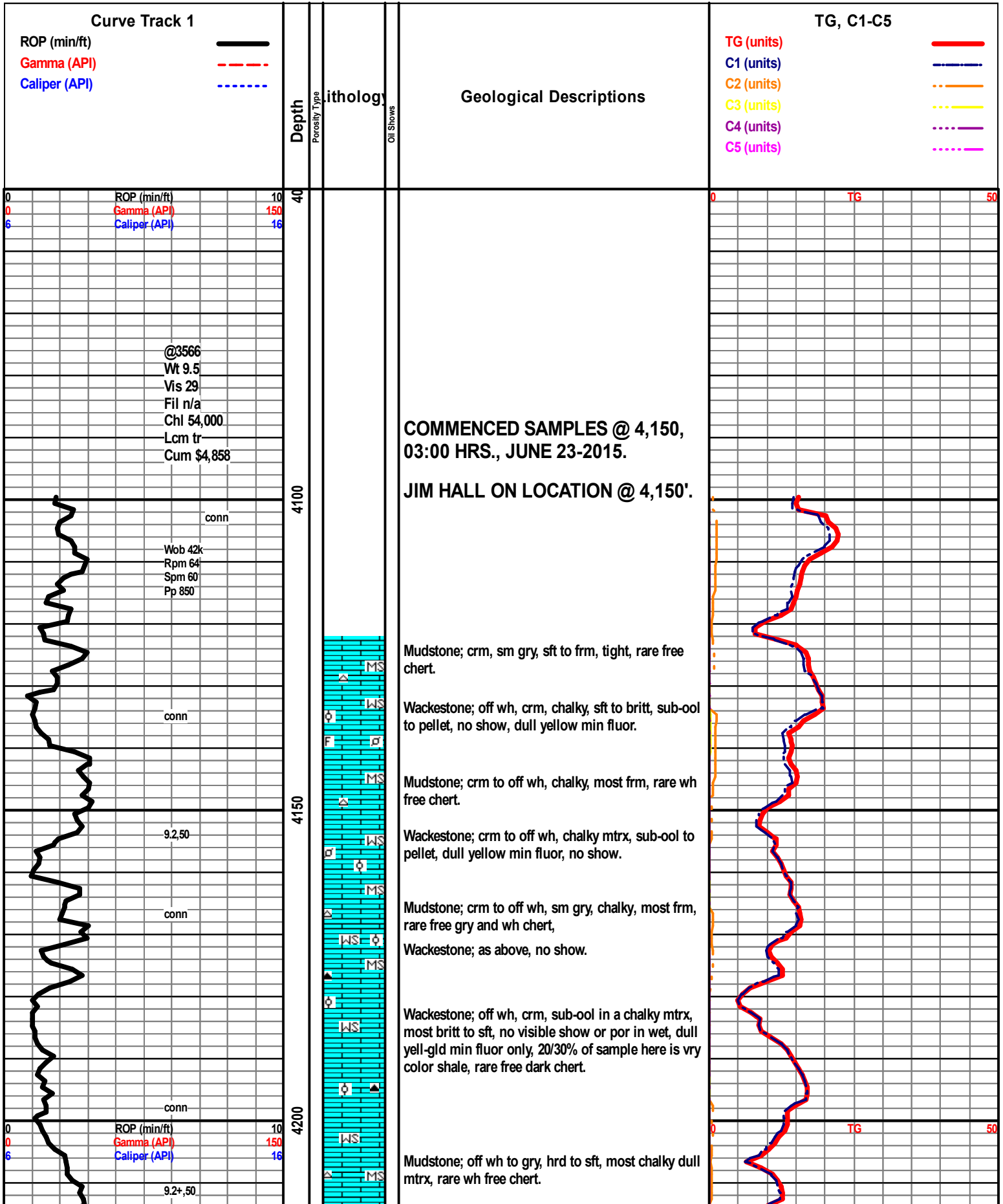
- Grysh
- Gryslt
- Lms
- Sandylms
- Sh
- Sltstn

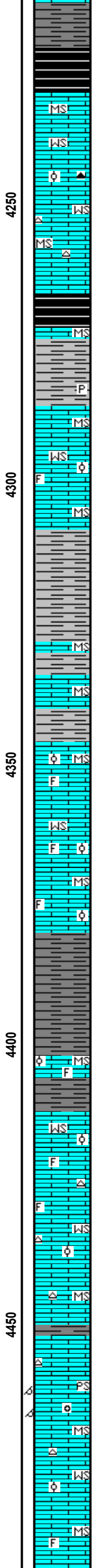
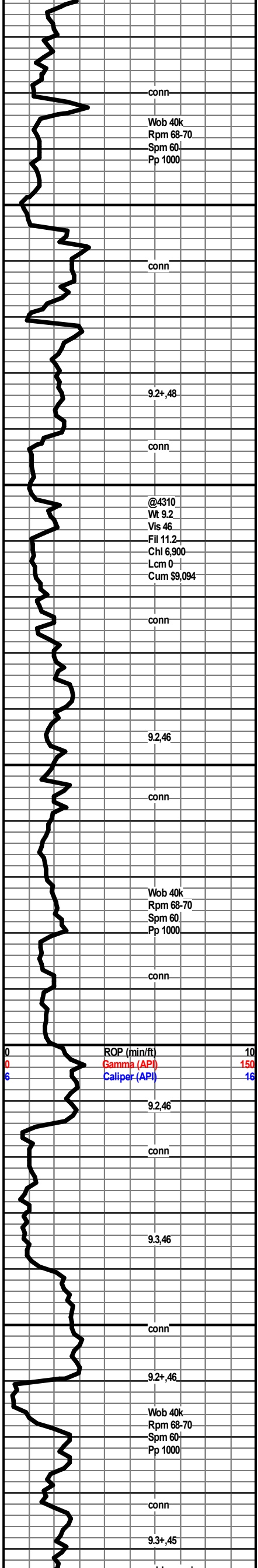
STRINGER

- Anhy
- Arg
- Bent
- Coal
- Dol
- Gyp
- Ls
- Mrst
- Sltstrg
- Ssstrg
- Carbsh
- Clystn
- Dol

TEXTURE

- Boundst
- Chalky
- Cryxln
- Earthy
- Finexln
- Grainst
- Lithogr
- Microxln
- Mudst
- Packst
- Wackest





Shale; >30% gry, gry-grn, to blk, sft to hrd, grng to 10/20% blk hard to sft carb, sm with visable gas bubbles.

Shale; more hrd, gassy blk-carb here.

Wackestone; off wh, crm, sub-ool in chalky mtrx, most britt, no visible por or show in wet, dull yell-gld min fluor only, rare free brn and wh chert, still 40/50% shales as above here.

Mudstone; buff, gry, hrd to frm, chalky to xln-silky luster and dense, dull min fluor only, rare free chert.

Heebner 4267 (-1791) A +5 B +18

Shale; 20/30% blk, carb, hrd-gsy, sft-gsy when broken.

Shale; > 40% brick-red, red-brn, and pale grn, sft to hrd, rare pyrite laminations.

Mudstone; crm to gry, most chalky hrd, some with drk inculsions.

Wackestone; crm to off wh and buff, sub-ool to vf-ool, chalky mtrx, some foss frag, no show dull yell min fluor, no vis por in wet sample

Shale; 10% of samples, gry, gry-grn, occ red, most sft.

Mudstone; crm to brn, hrd, chalky to xln-silky luster, tight.

Mudstone; as above, no real change here.

Shale; as above, no real large increase in percentage.

Mudstone; gry, brn, hrd, chalky to xln, frm to britt, some ool-Wackestone here, tight, no show, Shale 20% of sample.

Wackestone; off wh, crm, vf-ool to sub-ool, sm foss frag, most in chalky mtrx, occ xln mtrx, no show, no vis por or show in wet.

Mudstone; gry, tan, hrd, chalky to xln, dnese, Shale 5-10% of sample.

Shale; gry, drk gry, sft, some red, rthy to silky texture.

Brown LS 4403 (-1927) A +6 B +18

Mudstone; brn, slky, xln-dense, some foss frag.

Lansing 4412 (-1936) A +7 B +18

Wackestone; crm, tan, sub-ool to fine-ool and rare med-ool, some foss frag in the chalky tight looking mtrx in wet, no show, dull yell-gold min fluor

Wackestone; aa, increase vf-ool to some med-ool, scatt foss frag in chalky to xln mtrx, no show, rare wh free blk chert.

Mudstone; tan, hrd, dense, rare foss-chert.

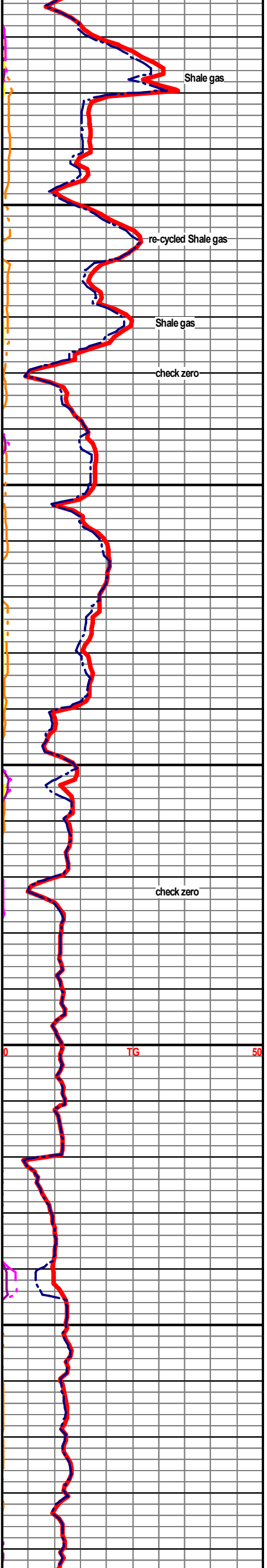
Shale; increase in very colored.

Packstone; tan, brn, hrd to britt, fine-oom to crs-oom, silky xln mtrx, barren oom por, min fluor only, no show.

Mudstone; off wh, crm and brn, hrd to britt, rare pale gry free foss chert here.

Wackestone; sub-ool to vf-ool, no show.

Mudstone; gry to pale gry, chalky dense, rare foss frag.



add pre-mix

Wob 40K
Rpm 68-70
Spm 60
Pp 1000

conn

conn

@ 4568 Trip NB #3

Wob 40k
Rpm 65
Spm 60
Pp 1000

ROP (min/ft) 10
Gamma (API) 150
Caliper (API) 16

conn

@4644
Wt 9.2
Vis 49
Fil 11.6
Chl 8,400
Lcm 0#1
Cum \$10,064

conn

conn, mud pump!

9.2,49

conn

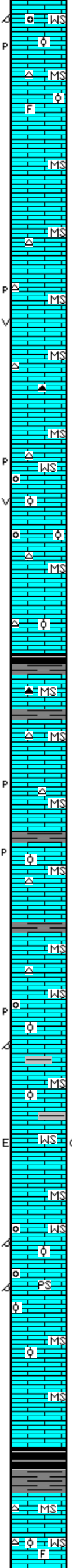
Wob 40k
Rpm 65
Spm 60
Pp 1000

conn

cir@4760"

conn, add premix, Lcm...

4500
4550
4600
4650
4700
4750



Wackestone / Packstone; crm, tan, vf-ool to prly-oom, no show tight look wet, rare barren por in dry sample.

Mudstone / Wackestone; most crm to gry, hrd to britt, sub-ool to foss frag, no show, min fluor only, rare blk wh free chert, Shale approx 20% of samples.

Mudstone; tan to brn, some inc in gry, hrd to britt, chalky to xln mtrx.

Mudstone; as above, sly inc brn as above, Shale approx 20%, rare free wh chert.

Mudstone; crm to tan hrd-britt, sm sub-ool, dense chalky mtrx, sm gry to brn, hrd-chalky, to xln, rare free wh to light gry spculr chert, dry rare very small pp & vgy por.

4568 sample; as above, rare blk light gry spculr chert.

Mudstone; gry, brn, hrd-britt, chalky-xln mtrx, dull min fluor, rare free brn spculr chert, sample quality very poor after trip.

Wackestone; off wh, sub-ool, and rare sub-oom in chalky mtrx, tight look wet, rare free lt gry chert w/wh inclusions, rare very small pp & vgy barren por in dry.

Mudstone; crm, off wh, most chalky mtrx, scatt sub-ool, very dull min fluor, rare free wh chert.

Shale; slight influx, gry, blk-carb-rare gas wh/broken, sample wash gry here.

Mudstone; off wh, crm, chalky, brn & gry silky-xln, rare gry blk free chert.

Mudstone; aa, rare brn-gry sharp to blk free chert, rare vry small por in dry, no stn.

Shale; gry to drk gry.

Mudstone; crm to off wh, chalky, brn xln, some sub-ool, rare light gry chert, very small por in dry, no stn.

Shale; gray to drk gry, sm blk.

Mudstone; slight inc brn and gry, silky xln, dense, rare chert aa some spulr.

Wackestone; off wh, crm, f-ool to sub-ool, tr oom, chalky to xln mtrx, no show, vry dull min fluor, no vis por wet, rare vry small pp and oom por in dry, no stn

Mudstone; off wh, crm, chalky, some sub-ool, tight no show.

Wackestone; scatt, crm-off wh, sub-ool, chalky mtrx, (1) sample with weathered edge, lit brn stn, fluor, inst cut, no odor, no free oil, no other show samples.

Wackestone / Packstone; vf-ool to f-ool, and f-oom, chalky to xln mtrx, very hrd to britt, some fluor, no cut on selected samples,

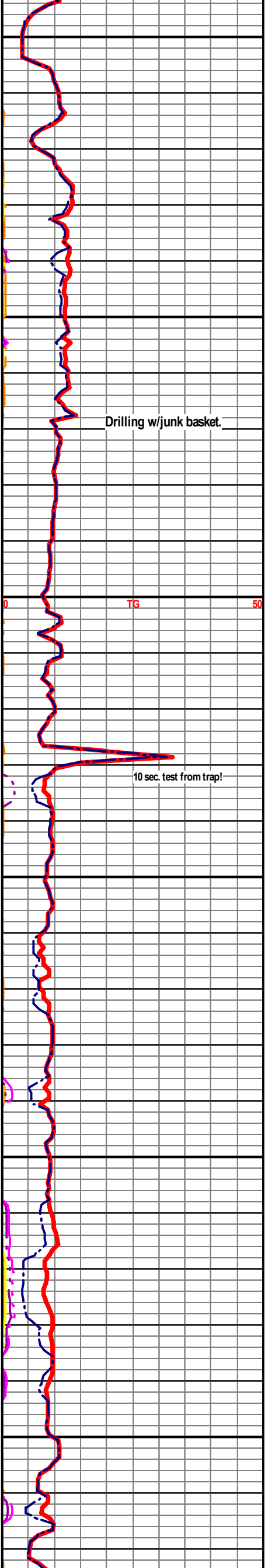
Mudstone / Wackestone; crm, off wh, sub-ool, some foss-frag, tight look wet, no show.

Mudstone; inc tan to brn, hrd, dense xln silky texture.

Stark Shale 4753 (-2277) A +5 B +12

Shale; blk, carb, sft, rare hrd with rare vis gas when broken.

Wackestone; off wh, sub-ool, sm foss frag, tigh look, no show, rare lt gry foss chert.

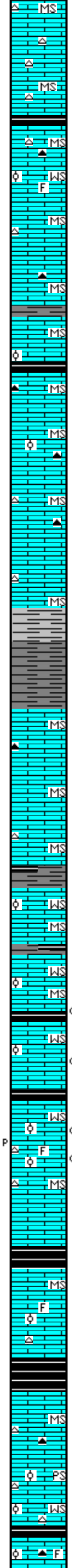
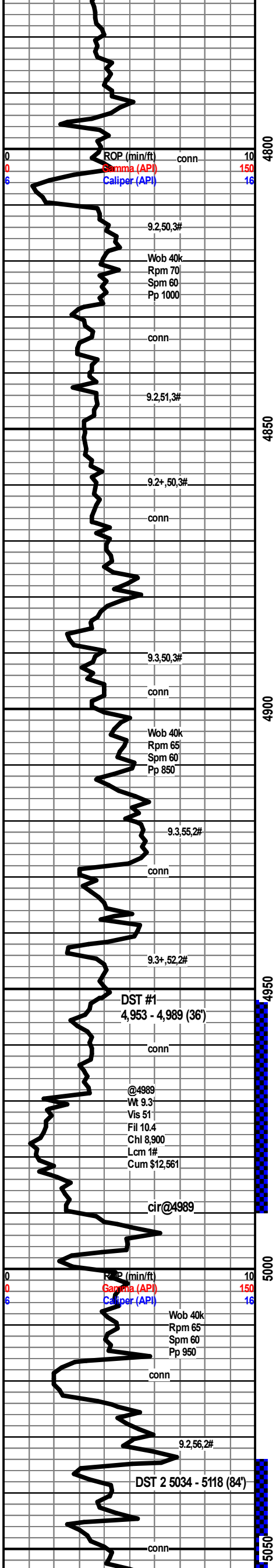


Drilling w/junk basket.

10 sec. test from trap!

TG

50



Mudstone; tan, brn, hrd, silky-xln mtrx, dense, rare mott free chert.

Hush. Shale 4794 (-2318) A +3 B +10
Shale; blk-carb, sft, hrd-some w/vis gas.

Mudstone; buff, gry and brn, rare tan & blk chert.

Wackestone; brn, tan to off wh, vf to f ool in xln to chlky mtrx, tr foss frag, tight look wet, no show, poor sample quality after adding LCM.

Mudstone; off wh, crm, chlky, brn xln-silky textrue, some sub ool look, tight looking, rare free light and dark brn chert, sm foss, still much carbonaceous shale in samples.

Shale; blk, carb, sft to hrd, no vis gas.

Mudstone; inc, brn, hrd, xln-silky textrue, dense, rare blk and tan free cherts.

Mudstone; off wh, crm, chky, britt, sm sub-ool, rare free blk and gry chert, still 20% of samples are shale.

Mudstone; crm, gry, hrd to britt, some crm sub-ool look, some with scatt foss frag, some gry-xln dense no show, trace free blk chert.

Mudstone/ Wackestone; brn, britt to hrd, xln, scatt foss frag and sub-ool in the mtrx, no show, 25% shale here, vry colored, sft to britt, some mott.

Shale; incre in gry, drk gry, pale grn, some mott, some w/carb inclusions, 35% of sample.

Marmaton 4900 (-2424) A +4 B +14
Mudston; crm, lt gry, hrd to britt, chlky to xln, some crm to off wh sub-ool, chlky, rare drk brn free chert, samples wash gry.

Mudstone; crm, tan, most britt, chlky to xln, no show, rare free wh to opq chert, shale 20%, samples wash gry.

Shale; drk gry to blk sft-carb.

Wackestone; crm, off wh, su b-ool, sft to britt, chlky to xln mtrx, no show.

Wackestone; as above, slight incr in hrd, gry mudstone-dense.

Wackestone; crm chlky, sub-ool, rare brt fluor, rare residual ring cut, no odor, no vis oil, poor spty stn.

Pawnee 4971 (-2495) A +4 B +9
Shale; blk-carb, gassy

Wackestone; most off wh, sm crm, hrd to britt, chlky to xln mtrx, vf-ool to sub-ool, rare foss frag, rare free foss frag, most tight, rare barren por in dry, rare spoty stn, no vis gas bubbles, rare vis free oil when broken, rare sample with rainbow when broken, rare to 5% brt fluor, most min, rare resid ring cut, very faint odor, rare chert inclusions, very poor sample show.

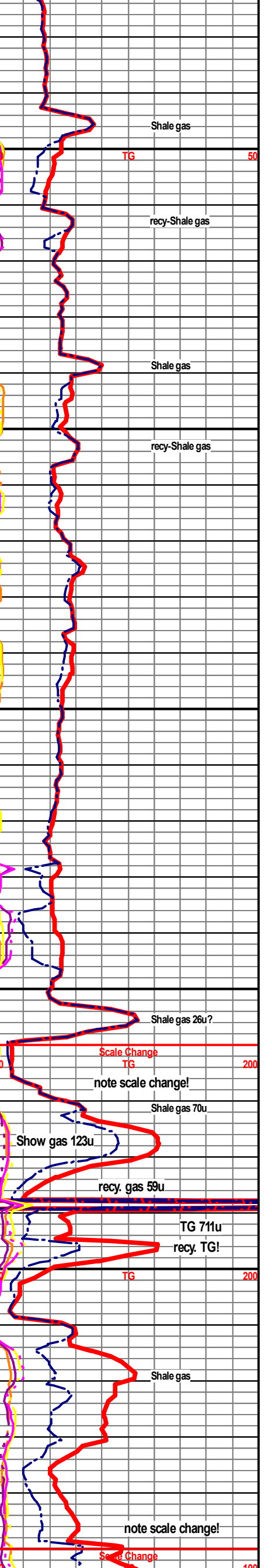
Labette Shale; 4996 (-2520) A +5 B +11
Mudstone; crm, gry, hrd-britt, most chky, sm sug-ool, tr foss frag, dense, dull min fluor, sm rare chert inclusions.

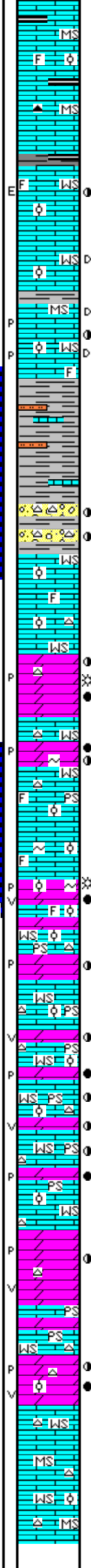
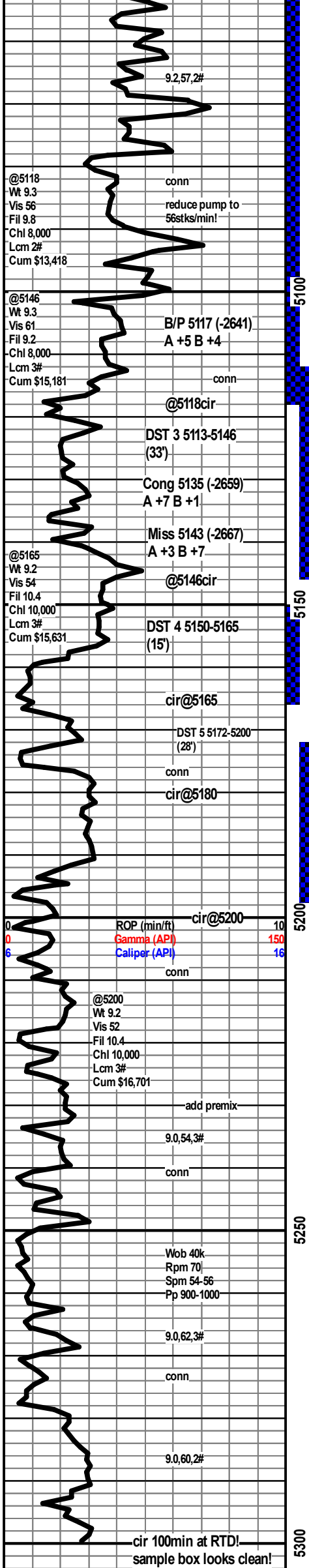
CKE Shale 5016 (-2540) A +5 B +10
Shale; blk-carb, hrd-britt, blkly gasy

Mudstone; crm, off wh, hrd-britt, most chky, scatt brn-xln, rare free, drk-lt chert.

Mudstone; aa, rare tan f-med ool Packstone; hrd-fri, no show, rare free blkly vry colored ool chert.

Wackestone; crm, vf-ool to sub-ool, chky to xln mtrx, dense, rare vry colored cherts, rare free foss, no vis show.





Mudstone; crm, off wh, chky, sm sub-ool, rare f-ool WS & PS in tt chky mtrx, scatt crm to brn slky-xln MS, scatt LS with brt min fluor, no sample shows.

Mudstone; tan,brn, xln-dense, gry-chky tight, rare free drk chert.

Wackestone; crm, off wh, frm-fri, chky, sub-ool to rare foss frag, rare fluor w/residual ring cut, no odor, no vis oil, rare spty stn on wthrd edge.

Wackestone; aa, chky-xln, no odor, rare blk wormy stn-no cut.

Wackestone; off wh, crm, brn, chky-xln rare foss frag, sub-ool, no cut on rare wormy stn, no odor, tr fluor-mineral, (1) sample in the 60min with spty fluor, instn bt yell cut, no vis oil, spty stn w/vry poor vis pp por. (3) sample shows in 90min sample (2) are Wackestone, (1) Mudstone, same show as 60min, still no odor.

Shale; 30% of sample, vc, rthy to wxy, some mott.

5% chert, (10) pcs w/spty stn on wthrd edges, (6) with very slow cut, no odor, no vis gas bubbles, no vis free oil. rare SS; ufg, vwcons, wvstrtd, (1) sample w/fluor cut, spty stn, looks tight.

Wackestone; crm, off wh, chky, sub ool, rare floating foss frag, no show, poor quality due to much shale (80%).

Dolomite; less than 1% of sample, britt, gritty text, rare chert inclu. tan to off wh, vis gas bubls, faint rainbow w/broken, brt fluor, inst cut, fair odor, scatt small pp por in the dry, tan to light brown color could be even stain.

5173 5176 15% Dolomite buff, gry, sm tan-oil stn?, grtty to vf suc text, dull chalky luster, rare galu, brt fluor, inst cut, some no cut, rare pp por, rare rainbow w/broken, (1)pc w/brn oil when broken, very poor sample odor, no visible gas in samples.

5193 5198 10% Dolomite, buff to tan, vf-suc, frm, hrd, rare sub-ool to sl dolo-lime, very faint odor, some gas bubbles and rainbow wh/broken, inst cut on brt fluor, scatt pp and vgy por, no vis free oil.

Wackestone / Packstone; crm, off wh, sft to britt, sub-ool to f-ool, some foss frag.

Dolomite; 5% of sample, gry, buff, grty, vf suc, hrd, rare show, inst cut, evn to spty stn, most barren, faint odor, no vis oil or gas bubbles, show pcs could come from above 5210.

Wackestone / Packstone; crm to off wh, sub ool to f-ool, sft to britt, rare Packstone with stain and cut, one pcs of chert with fluor cut, no vis oil, most show from Dolomite, no to very faint odor.

Dolomite; 5% of sample, lt brn to tan, hrd, sucrosic, scatt pp & vgy por, most por barren some fluor with cut, some min fluor only-no cut.

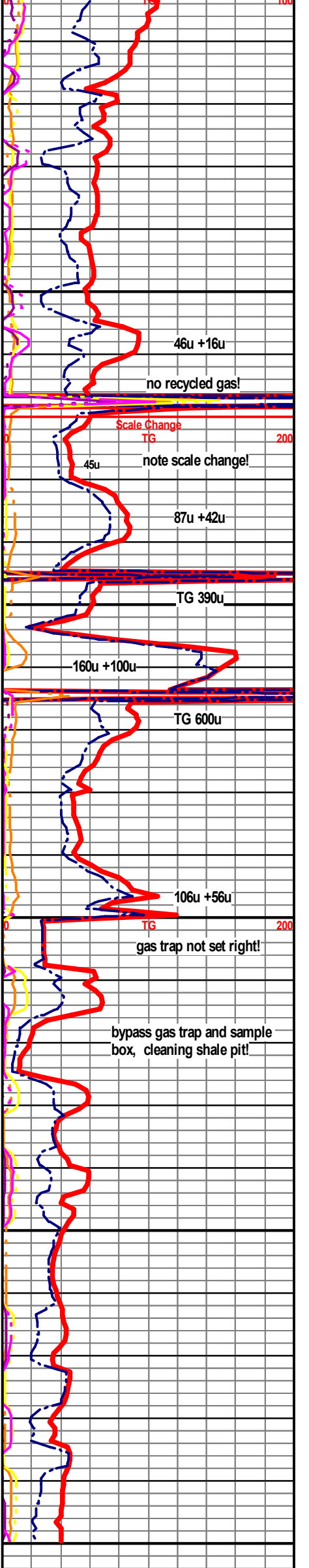
Dolomite; 20% of sample, tan to lt brn, some gry, most hrd to britt, min fluor, tr with brt fluor inst to slow cut, spty stn in dry, no vis oil no vis gas bubb, no odor, free wh to bone wh chert some foss aa.

Packstone / Wackestone; crm to off wh, f-ool to med ool, chky mtgrx, no show, free chert, some ool to foss.

Dolomite; gry, tan to brn, hrd, vf-suc, some with fluor cut, some with min fluor only, no vis oil or gas bubbles, no odor. It should be noted the Dolomite shows could be from above 5,210', most of the show sample look as those from above.

Mudstone; crm to tan, some off wh, most chky, free bone wh chert, sm foss-ool.

Wackestone; crm to ligh gry, sft to britt, chky mtrx, sub-ool to f-ool, rare foss frag, trace wh to blue wh free cher, some foss and ool.



RTD 5,300' @ 16:00 HRS.
6/29/15

E-LOG TD 5,298'

