



TRILOBITE TESTING, INC

DRILL STEM TEST REPORT

Shakespeare Oil Comp. Inc

23-13s-32w Logan , Ks

202 West Main St
Salem, Il
62881 - 1519
ATTN: Tim Priest

Bader #2-23

Job Ticket: 45506

DST#: 2

Test Start: 2015.08.26 @ 14:10:16

GENERAL INFORMATION:

Formation: **H - I**

Deviated: No Whipstock: 0.00 ft (KB)

Time Tool Opened: 15:57:31

Time Test Ended: 20:55:46

Test Type: Conventional Bottom Hole (Reset)

Tester: Shane McBride

Unit No: 84

Interval: 4165.00 ft (KB) To 4210.00 ft (KB) (TVD)

Reference Elevations: 3007.00 ft (KB)

Total Depth: 4210.00 ft (KB) (TVD)

2998.00 ft (CF)

Hole Diameter: 7.88 inches Hole Condition: Fair

KB to GR/CF: 9.00 ft

Serial #: 8938

Inside

Press@RunDepth: 86.03 psig @ 4166.00 ft (KB)

Capacity: 8000.00 psig

Start Date: 2015.08.26

End Date:

2015.08.26

Last Calib.:

2015.08.26

Start Time: 14:10:16

End Time:

20:40:46

Time On Btm:

2015.08.26 @ 15:57:16

Time Off Btm:

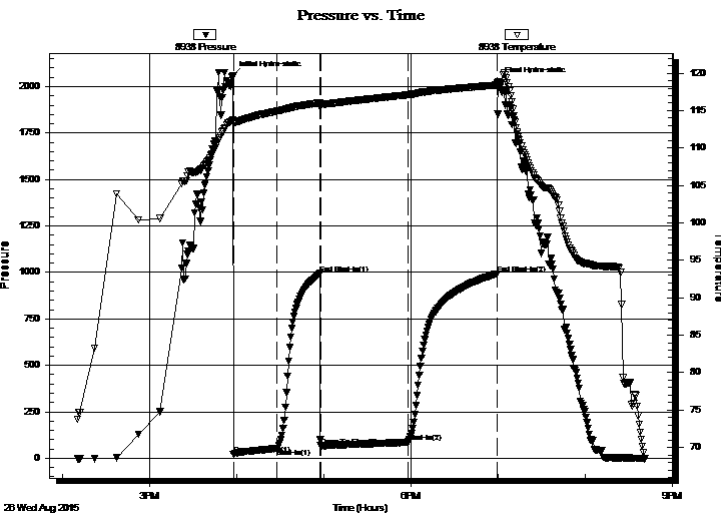
2015.08.26 @ 19:00:01

TEST COMMENT: 3 3/4" in blow

No return

5" in blow

No return



PRESSURE SUMMARY

Time (Min.)	Pressure (psig)	Temp (deg F)	Annotation
0	2057.60	113.76	Initial Hydro-static
1	20.31	113.27	Open To Flow (1)
31	54.24	114.92	Shut-In(1)
60	993.99	116.04	End Shut-In(1)
61	67.32	115.81	Open To Flow (2)
121	86.03	117.10	Shut-In(2)
182	993.62	118.41	End Shut-In(2)
183	2029.25	118.64	Final Hydro-static

Recovery

Length (ft)	Description	Volume (bbl)
120.00	s m c w tr/of oil 5m 95w	0.59
35.00	s o & w c m 5o 10w 85m	0.45
5.00	free oil 100%o	0.07

* Recovery from multiple tests

Gas Rates

	Choke (inches)	Pressure (psig)	Gas Rate (Mcf/d)



**TRILOBITE
TESTING, INC**

DRILL STEM TEST REPORT

FLUID SUMMARY

Shakespeare Oil Comp. Inc

23-13s-32w Logan , Ks

202 West Main St
Salem, Il
62881 - 1519
ATTN: Tim Priest

Bader #2-23

Job Ticket: 45506

DST#: 2

Test Start: 2015.08.26 @ 14:10:16

Mud and Cushion Information

Mud Type: Gel Chem

Mud Weight: 9.00 lb/gal

Viscosity: 56.00 sec/qt

Water Loss: 7.97 in³

Resistivity: 0.00 ohm.m

Salinity: 3000.00 ppm

Filter Cake: 1.00 inches

Cushion Type:

Cushion Length: ft

Cushion Volume: bbl

Gas Cushion Type:

Gas Cushion Pressure: psig

Oil API: 36 deg API

Water Salinity: 30000 ppm

Recovery Information

Recovery Table

Length ft	Description	Volume bbl
120.00	s m c w tr/of oil 5m 95w	0.590
35.00	s o & w c m 5o 10w 85m	0.455
5.00	free oil 100%o	0.070

Total Length: 160.00 ft Total Volume: 1.115 bbl

Num Fluid Samples: 0

Num Gas Bombs: 0

Serial #:

Laboratory Name:

Laboratory Location:

Recovery Comments: rw .176 @ 88*f = 30,000 chlor

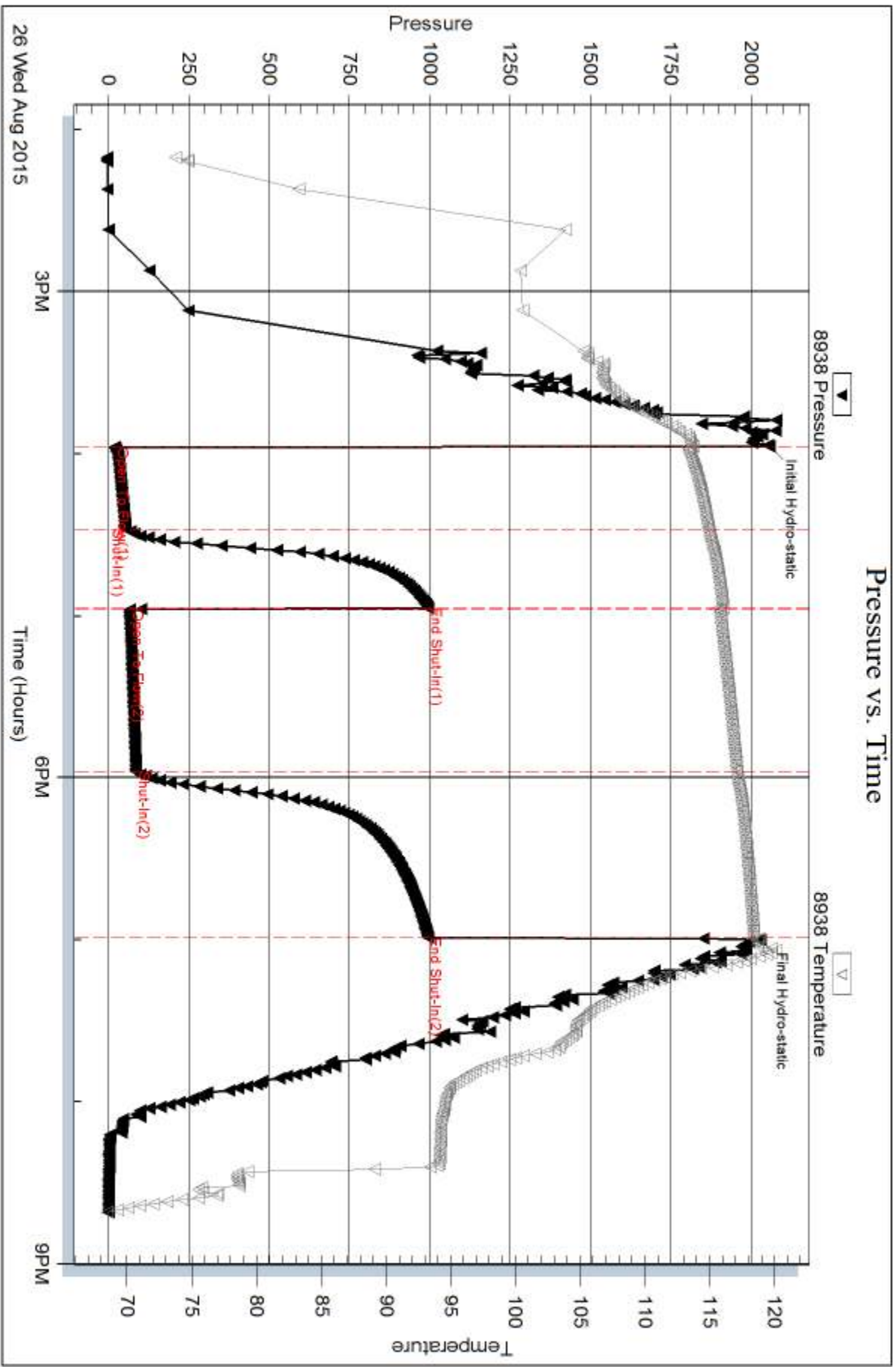
Serial #: 8938

Inside

Shakespeare Oil Comp. Inc

Bader #2-23

DST Test Number: 2



Trilobite Testing, Inc

Ref. No: 45506

Printed: 2015.08.27 @ 07:55:15