



TRILOBITE TESTING, INC

DRILL STEM TEST REPORT

Shakespeare Oil Comp. Inc

23-13s-32w Logan , Ks

202 West Main St
Salem, Il
62881 - 1519
ATTN: Tim Priest

Bader #2-23

Job Ticket: 45507

DST#: 3

Test Start: 2015.08.27 @ 07:10:17

GENERAL INFORMATION:

Formation: **K**
 Deviated: No Whipstock: 0.00 ft (KB)
 Time Tool Opened: 08:45:17
 Time Test Ended: 13:35:17
 Interval: **4234.00 ft (KB) To 4265.00 ft (KB) (TVD)**
 Total Depth: 4265.00 ft (KB) (TVD)
 Hole Diameter: 7.88 inches Hole Condition: Fair
 Test Type: Conventional Bottom Hole (Reset)
 Tester: Shane McBride
 Unit No: 84
 Reference Elevations: 3007.00 ft (KB)
 2998.00 ft (CF)
 KB to GR/CF: 9.00 ft

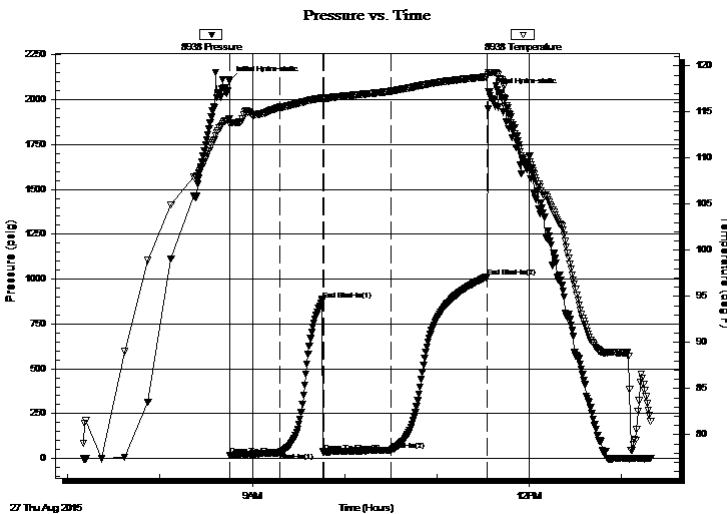
Serial #: 8938

Inside

Press@RunDepth: 47.69 psig @ 4235.00 ft (KB) Capacity: 8000.00 psig
 Start Date: 2015.08.27 End Date: 2015.08.27 Last Calib.: 2015.08.27
 Start Time: 07:10:17 End Time: 13:19:17 Time On Btm: 2015.08.27 @ 08:45:02
 Time Off Btm: 2015.08.27 @ 11:33:47

TEST COMMENT: Surface blow , blew throughout
 No return
 Surface blow , blew throughout
 No return

PRESSURE SUMMARY



Time (Min.)	Pressure (psig)	Temp (deg F)	Annotation
0	2107.57	114.24	Initial Hydro-static
1	16.41	113.73	Open To Flow (1)
33	31.81	115.48	Shut-In(1)
61	885.76	116.55	End Shut-In(1)
62	34.23	116.38	Open To Flow (2)
106	47.69	117.25	Shut-In(2)
168	1012.66	118.82	End Shut-In(2)
169	2041.77	119.25	Final Hydro-static

Recovery

Length (ft)	Description	Volume (bbl)
60.00	s o c m 3%o 97%m	0.30
0.00	2" inches free oil on top	0.00

Gas Rates

	Choke (inches)	Pressure (psig)	Gas Rate (Mcf/d)

* Recovery from multiple tests



**TRILOBITE
TESTING, INC**

DRILL STEM TEST REPORT

FLUID SUMMARY

Shakespeare Oil Comp. Inc

23-13s-32w Logan , Ks

202 West Main St
Salem, Il
62881 - 1519
ATTN: Tim Priest

Bader #2-23

Job Ticket: 45507

DST#: 3

Test Start: 2015.08.27 @ 07:10:17

Mud and Cushion Information

Mud Type: Gel Chem

Mud Weight: 9.00 lb/gal

Viscosity: 56.00 sec/qt

Water Loss: 7.98 in³

Resistivity: 0.00 ohm.m

Salinity: 3000.00 ppm

Filter Cake: 1.00 inches

Cushion Type:

Cushion Length: ft

Cushion Volume: bbl

Gas Cushion Type:

Gas Cushion Pressure: psig

Oil API:

0 deg API

Water Salinity: 0 ppm

Recovery Information

Recovery Table

Length ft	Description	Volume bbl
60.00	s o c m 3%o 97%m	0.295
0.00	2" inches free oil on top	0.000

Total Length: 60.00 ft Total Volume: 0.295 bbl

Num Fluid Samples: 0

Num Gas Bombs: 0

Serial #:

Laboratory Name:

Laboratory Location:

Recovery Comments:

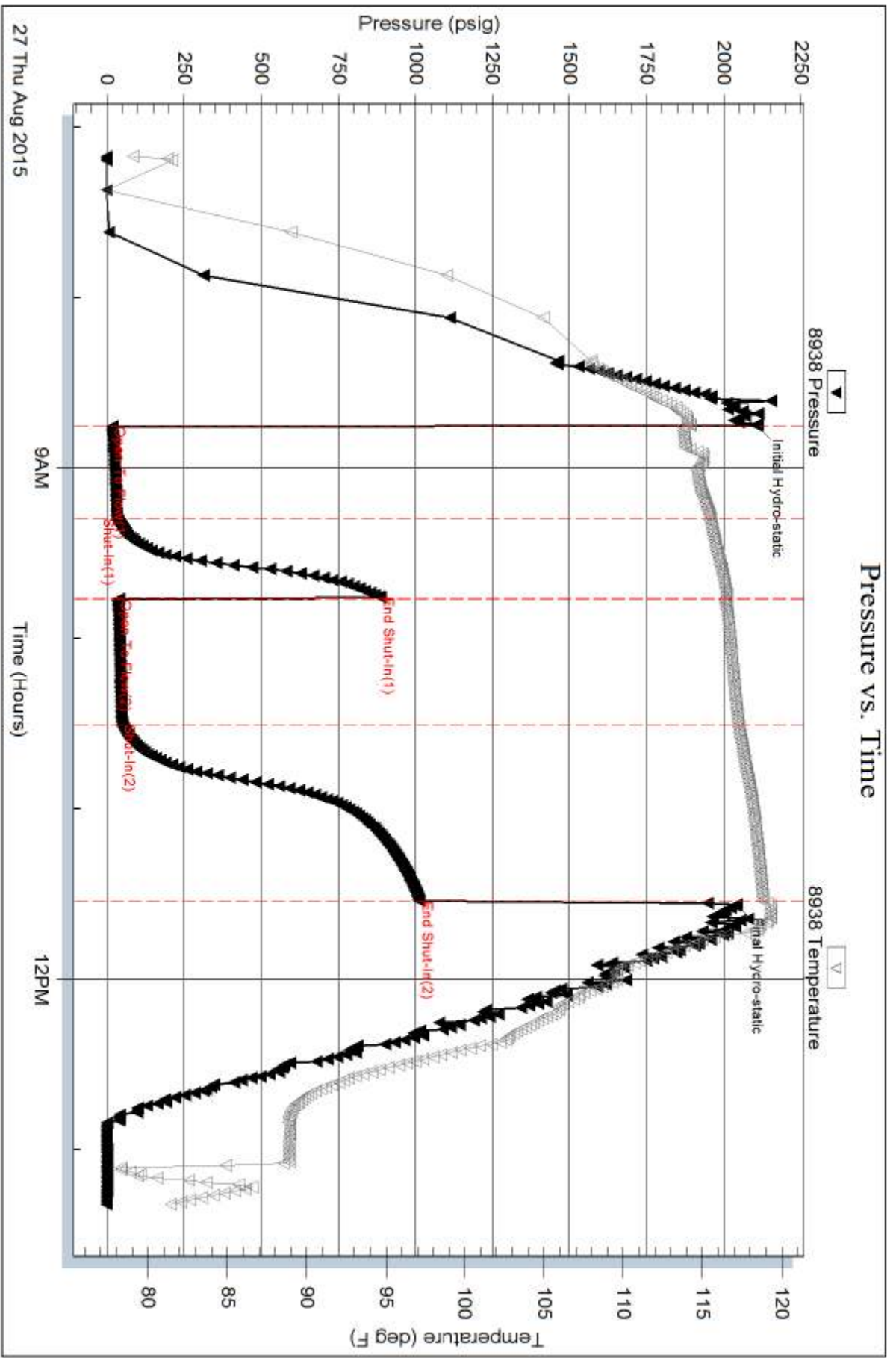
Serial #: 8938

Inside

Shakespeare Oil Comp. Inc

Bader #2-23

DST Test Number: 3



Trilobite Testing, Inc

Ref. No: 45507

Printed: 2015.08.27 @ 14:44:17