



**TRILOBITE
TESTING, INC.**

DRILL STEM TEST REPORT

Shakespeare Oil Comp. Inc

23-13s-32w Logan , Ks

202 West Main St
Salem, Il
62881 - 1519
ATTN: Tim Priest

Bader #2-23

Job Ticket: 45508

DST#: 4

Test Start: 2015.08.29 @ 02:46:01

GENERAL INFORMATION:

Formation: **Johnson - Sand**

Deviated: No Whipstock: 0.00 ft (KB)

Time Tool Opened: 04:46:31

Time Test Ended: 10:30:01

Test Type: Conventional Bottom Hole (Reset)

Tester: Shane McBride

Unit No: 84

Interval: 4553.00 ft (KB) To 4600.00 ft (KB) (TVD)

Reference Elevations: 3007.00 ft (KB)

Total Depth: 4600.00 ft (KB) (TVD)

2998.00 ft (CF)

Hole Diameter: 7.88 inches Hole Condition: Fair

KB to GR/CF: 9.00 ft

Serial #: 8938

Inside

Press @ Run Depth: 113.22 psig @ 4554.00 ft (KB)

Capacity: 8000.00 psig

Start Date: 2015.08.29

End Date:

2015.08.29

Last Calib.:

2015.08.29

Start Time: 02:46:01

End Time:

10:11:01

Time On Btm:

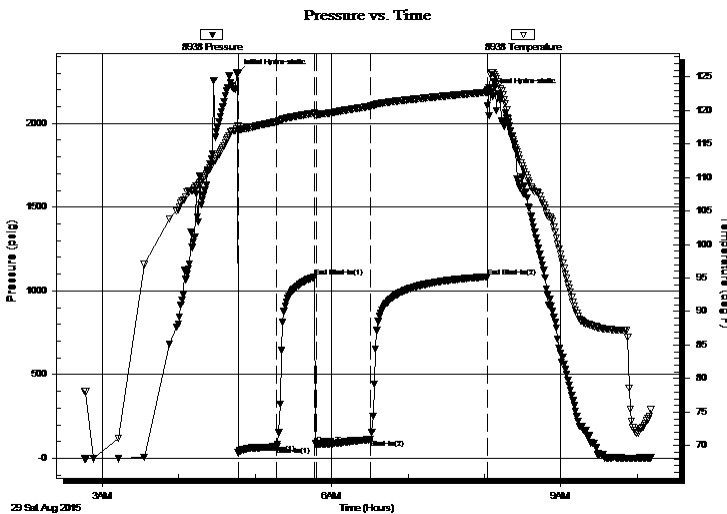
2015.08.29 @ 04:46:16

Time Off Btm:

2015.08.29 @ 08:03:16

TEST COMMENT: B.O.B in 17 min
2 1/2" in return blow
B.O.B. in 17 min.
3" in return blow

PRESSURE SUMMARY



Time (Min.)	Pressure (psig)	Temp (deg F)	Annotation
0	2298.08	117.62	Initial Hydro-static
1	32.64	116.99	Open To Flow (1)
31	70.01	118.31	Shut-In(1)
61	1084.17	119.58	End Shut-In(1)
62	85.85	119.37	Open To Flow (2)
105	113.22	120.60	Shut-In(2)
196	1084.78	122.70	End Shut-In(2)
197	2181.60	122.94	Final Hydro-static

Recovery

Length (ft)	Description	Volume (bbl)
60.00	g m c o 30g 30m 40o	0.30
300.00	c g o 30g 70o	3.63
0.00	480' gas in pipe	0.00

Gas Rates

	Choke (inches)	Pressure (psig)	Gas Rate (Mcf/d)

* Recovery from multiple tests



**TRILOBITE
TESTING, INC.**

DRILL STEM TEST REPORT

FLUID SUMMARY

Shakespeare Oil Comp. Inc

23-13s-32w Logan , Ks

202 West Main St
Salem, Il
62881 - 1519
ATTN: Tim Priest

Bader #2-23

Job Ticket: 45508

DST#: 4

Test Start: 2015.08.29 @ 02:46:01

Mud and Cushion Information

Mud Type: Gel Chem

Mud Weight: 9.00 lb/gal

Viscosity: 52.00 sec/qt

Water Loss: 7.20 in³

Resistivity: 0.00 ohm.m

Salinity: 3400.00 ppm

Filter Cake: 1.00 inches

Cushion Type:

Cushion Length: ft

Cushion Volume: bbl

Gas Cushion Type:

Gas Cushion Pressure: psig

Oil API:

26 deg API

Water Salinity: 0 ppm

Recovery Information

Recovery Table

Length ft	Description	Volume bbl
60.00	g m c o 30g 30m 40o	0.295
300.00	c g o 30g 70o	3.625
0.00	480' gas in pipe	0.000

Total Length: 360.00 ft Total Volume: 3.920 bbl

Num Fluid Samples: 0

Num Gas Bombs: 0

Serial #:

Laboratory Name:

Laboratory Location:

Recovery Comments:

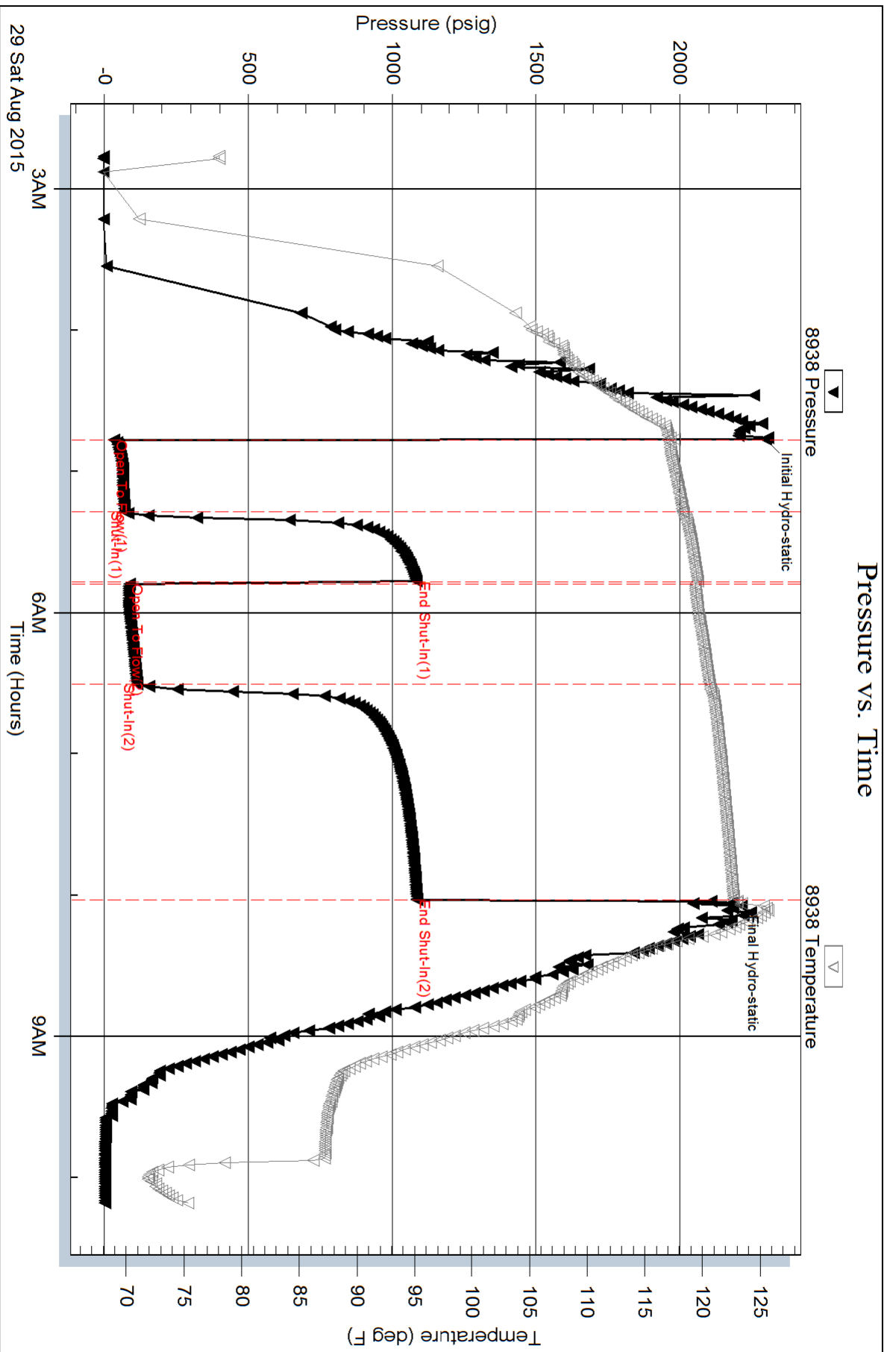
Serial #: 8938

Inside

Shakespeare Oil Corp. Inc

Bader #2-23

DST Test Number: 4



Trilobite Testing, Inc

Ref. No: 45508

Printed: 2015.08.29 @ 22:54:24