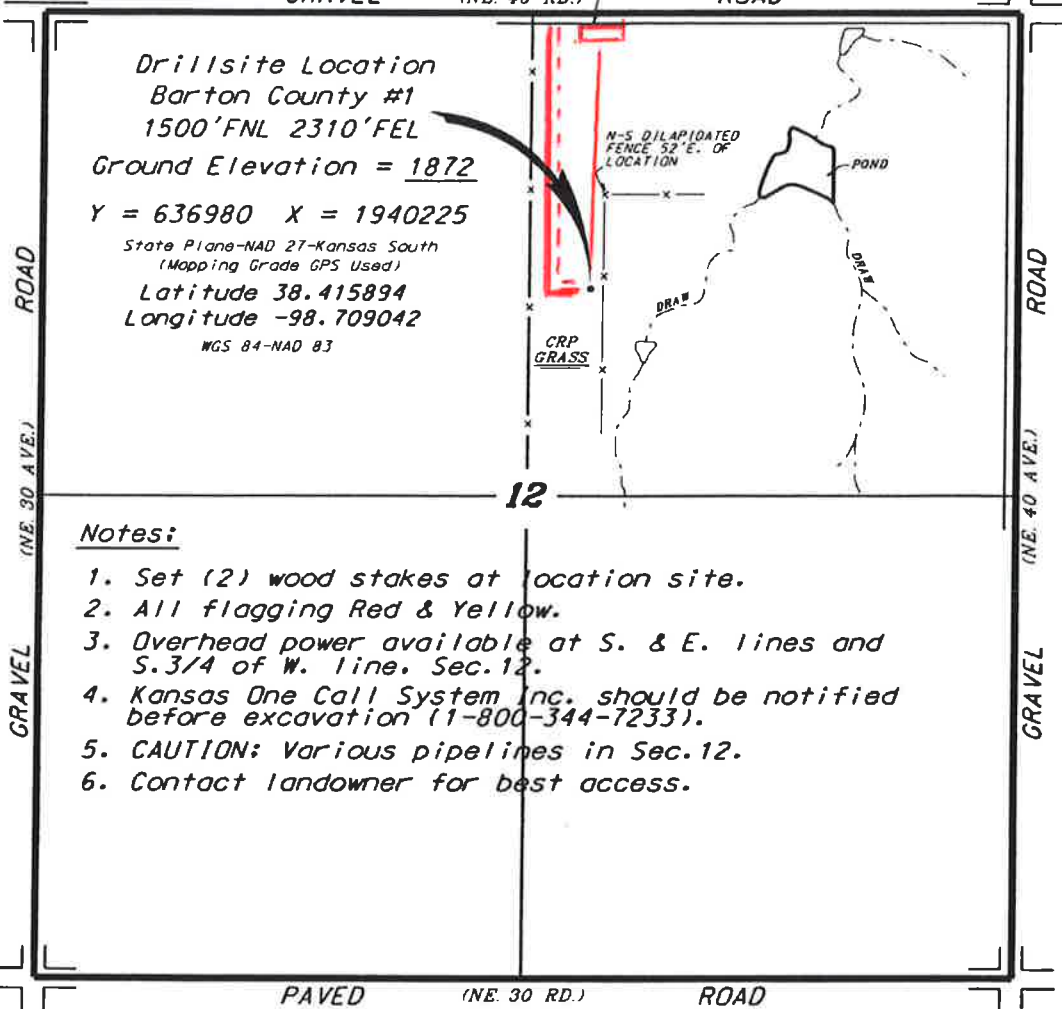


RJM OIL COMPANY, INC.  
 BARTON COUNTY LEASE  
 NE. 1/4, SECTION 12, T19S, R13W  
 BARTON COUNTY, KANSAS

GRAVEL (NE. 40 RD.) ROAD  
 FLAGGED ROAD OPPOSITE LOC.

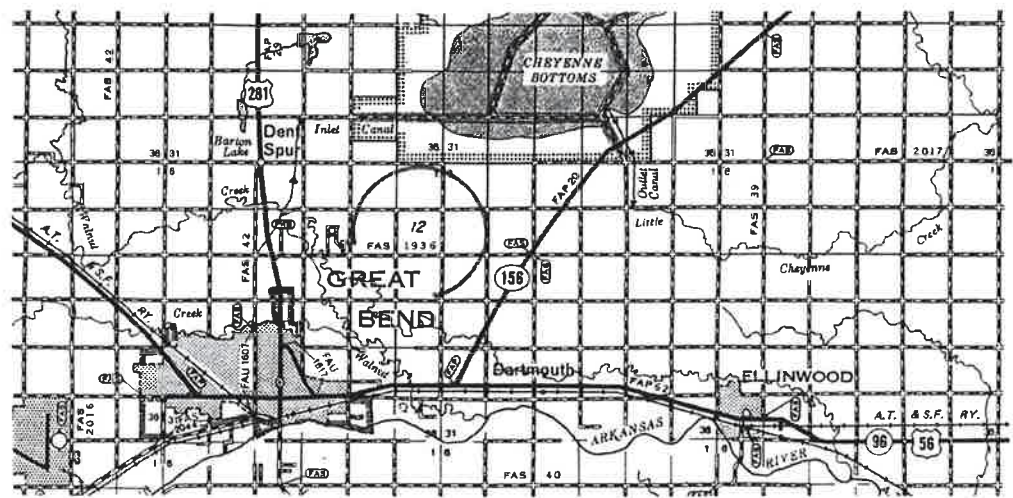


Drillsite Location  
 Barton County #1  
 1500'FNL 2310'FEL  
 Ground Elevation = 1872  
 Y = 636980 X = 1940225  
 State Plane-NAD 27-Kansas South  
 (Mapping Grade GPS Used)  
 Latitude 38.415894  
 Longitude -98.709042  
 WGS 84-NAD 83

**Notes:**

1. Set (2) wood stakes at location site.
2. All flagging Red & Yellow.
3. Overhead power available at S. & E. lines and S. 3/4 of W. line, Sec. 12.
4. Kansas One Call System Inc. should be notified before excavation (1-800-344-7233).
5. CAUTION: Various pipelines in Sec. 12.
6. Contact landowner for best access.

\*Ingress and egress to location as shown on this plat is per usage only and may not be legally opened for public use. Contact landowner, tenant and county road department for access.



Controlling data is based upon the best maps and photographs available to us and upon a regular section of land containing 640 acres.  
 Approximate section lines were determined using the normal standard of care of oilfield surveyors practicing in the state of Kansas. The section corners, which establish the precise section lines, were not necessarily located, and the exact location of the drillsite location in the section is not guaranteed. Therefore, the operator securing this service and accepting this plat and all other parties relying thereon agree to hold Central Kansas Oilfield Services, Inc., its officers and employees harmless from all losses, costs and expenses and said entities released from any liability from incidental or consequential damages.  
 Elevations derived from National Geodetic Vertical Datum.

Date October 23, 2015