

Company: La Veta Oil and Gas LLC
 Address: PO Box 780
 Middleburg, VA 20118-0780

OPERATOR

Contact Geologist: #2 Hammeke
 Contact Phone Nbr: Section 12-22S-12W
 Well Name: #2 Hammeke
 Location: Section 12-22S-12W
 Pool: API: 15-185-23948
 State: Kansas Field: Max
 Country: USA

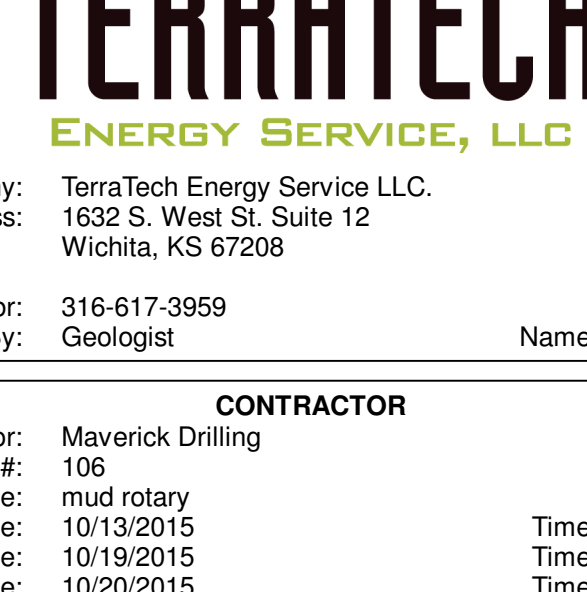
Scale 1:240 Imperial

Well Name: #2 Hammeke
 Surface Location: Section 12-22S-12W
 Bottom Location:
 API: 15-185-23948
 License Number:
 Spud Date: 10/13/2015 Time: 4:00 PM
 Region: Stafford County
 Drilling Completed: 10/19/2015 Time: 4:35 PM
 Surface Coordinates: 725' FNL & 2110' FEL
 Bottom Hole Coordinates:
 Ground Elevation: 1807.00ft
 K.B. Elevation: 1817.00ft
 Logged Interval: 3000.00ft To: 3850.00ft
 Total Depth: 3850.00ft
 Formation:
 Drilling Fluid Type: Chemical (MudCo)

SURFACE CO-ORDINATES

Well Type: Vertical
 Longitude: NS Co-ord: 725' FNL
 E/W Co-ord: 2110' FEL
 Latitude:

LOGGED BY



Company: TerraTech Energy Service LLC.
 Address: 1632 S. West St. Suite 12
 Wichita, KS 67208
 Phone Nbr: 316-617-3959
 Logged By: Geologist Name: Bruce Reed

CONTRACTOR

Contractor: Maverick Drilling
 Rig #: 106
 Rig Type: mud rotary
 Spud Date: 10/13/2015 Time: 4:00 PM
 TD Date: 10/19/2015 Time: 4:35 PM
 Rig Release: 10/20/2015 Time: 5:30 AM

ELEVATIONS

K.B. Elevation: 1817.00ft Ground Elevation: 1807.00ft
 K.B. to Ground: 10.00ft

NOTES

Surface Casing: 8-5/8" at 261'
 Production Casing: None

Daily Penetration:
 10/13/15 SPUD @ 4:00 PM
 10/14/15 400'
 10/15/15 1900'
 10/16/15 2902'
 10/17/15 3390'
 10/18/15 3558'
 10/19/15 3725' RTD @ 4:35 PM
 10/20/15 3850' Rig released @ 5:30 AM

DRILL STEM TESTS

DST #1 3489'-3558' Viola. Strong blow, BOB in 2 minutes during the first flow period. Strong blow, BOB in 12 seconds during the second flow period. Recovered: 2,400' GIP, 45' Clean Oil, 30' Gas Oil Cut Mud (28% gas, 22% oil, 50% mud). IFP/30" 25-32 psi, ISIP/45" 264 psi, FFP/45" 33-40 psi, FSIP/60" 218 psi

DST #2 3621'-3649' Arbuckle. Strong blow, BOB in 5 minutes during the first flow period. Strong blow, BOB in 3 minutes on the second flow period. Recovered: 870' GIP, 50' GOCM IFP/30" 37-28 psi, ISIP/45" 97 psi, FFP/30" 27-34 psi, FSIP/60" 83 psi

GEOLOGICAL TOPS

Formation	Log Tops	Datum	Sample Top	Datum Comparison*
Heebner	3095'	-1278	3092'	-1275 -13
Brown Lime	3224'	-1407	3220'	-1403 -13
Lansing	3252'	-1435	3249'	-1432 -16
Base KC	3492'	-1675	3489'	-1673 -15
Viola	3525'	-1708	3520'	-1703 -23
Simpson	3560'	-1743	3558'	-1741 -30
Arbuckle	3619'	-1802	3621'	-1804 -36

*Reference well: LaVeta Oil & Gas, #1 Hammeke, 1600' FNL / 1400' FEL, Section 12-22S-12W, Stafford County, Kansas

ROCK TYPES

Legend for rock types: Cht (Dolomitic, Chert White), Lmst fw7- shale, gry, Carbon Sh, Ss

ACCESSORIES

Legend for accessories: MINERAL (Dolomitic, Chert White), OTHER SYMBOLS (Oil Show, DST, Core, Tail pipe)

Legend for intervals: INTERVALS (Core, DST), OIL SHOW (Good Show, Fair Show, Poor Show, Spotted or Trace, Questionable Sin, Dead Oil Sin, Fluorescence, Gas)

Legend for gas: Total Gas (units), C1 (units), C2 (units), C3 (units), C4 (units)

Legend for physical properties: Depth, Mud Weight, Funnel Viscosity, API Filtrate, Chloride

Legend for DST: DST Int, DST alt, Core, Tail pipe

Legend for intervals: Core, DST

Legend for oil show: Good Show, Fair Show, Poor Show, Spotted or Trace, Questionable Sin, Dead Oil Sin, Fluorescence, Gas

Legend for gas: Total Gas (units), C1 (units), C2 (units), C3 (units), C4 (units)

Legend for physical properties: Depth, Mud Weight, Funnel Viscosity, API Filtrate, Chloride

Legend for DST: DST Int, DST alt, Core, Tail pipe

Legend for intervals: Core, DST

Legend for oil show: Good Show, Fair Show, Poor Show, Spotted or Trace, Questionable Sin, Dead Oil Sin, Fluorescence, Gas

Legend for gas: Total Gas (units), C1 (units), C2 (units), C3 (units), C4 (units)

Legend for physical properties: Depth, Mud Weight, Funnel Viscosity, API Filtrate, Chloride

Legend for DST: DST Int, DST alt, Core, Tail pipe

Legend for intervals: Core, DST

Legend for oil show: Good Show, Fair Show, Poor Show, Spotted or Trace, Questionable Sin, Dead Oil Sin, Fluorescence, Gas

Legend for gas: Total Gas (units), C1 (units), C2 (units), C3 (units), C4 (units)

Legend for physical properties: Depth, Mud Weight, Funnel Viscosity, API Filtrate, Chloride

Legend for DST: DST Int, DST alt, Core, Tail pipe

Legend for intervals: Core, DST

Legend for oil show: Good Show, Fair Show, Poor Show, Spotted or Trace, Questionable Sin, Dead Oil Sin, Fluorescence, Gas

Legend for gas: Total Gas (units), C1 (units), C2 (units), C3 (units), C4 (units)

Legend for physical properties: Depth, Mud Weight, Funnel Viscosity, API Filtrate, Chloride

Legend for DST: DST Int, DST alt, Core, Tail pipe

Legend for intervals: Core, DST

Legend for oil show: Good Show, Fair Show, Poor Show, Spotted or Trace, Questionable Sin, Dead Oil Sin, Fluorescence, Gas

Legend for gas: Total Gas (units), C1 (units), C2 (units), C3 (units), C4 (units)

Legend for physical properties: Depth, Mud Weight, Funnel Viscosity, API Filtrate, Chloride

Legend for DST: DST Int, DST alt, Core, Tail pipe

Legend for intervals: Core, DST

Legend for oil show: Good Show, Fair Show, Poor Show, Spotted or Trace, Questionable Sin, Dead Oil Sin, Fluorescence, Gas

Legend for gas: Total Gas (units), C1 (units), C2 (units), C3 (units), C4 (units)

Legend for physical properties: Depth, Mud Weight, Funnel Viscosity, API Filtrate, Chloride

Legend for DST: DST Int, DST alt, Core, Tail pipe

Legend for intervals: Core, DST

Legend for oil show: Good Show, Fair Show, Poor Show, Spotted or Trace, Questionable Sin, Dead Oil Sin, Fluorescence, Gas

Legend for gas: Total Gas (units), C1 (units), C2 (units), C3 (units), C4 (units)

Legend for physical properties: Depth, Mud Weight, Funnel Viscosity, API Filtrate, Chloride

Legend for DST: DST Int, DST alt, Core, Tail pipe

Legend for intervals: Core, DST

Legend for oil show: Good Show, Fair Show, Poor Show, Spotted or Trace, Questionable Sin, Dead Oil Sin, Fluorescence, Gas

Legend for gas: Total Gas (units), C1 (units), C2 (units), C3 (units), C4 (units)

Legend for physical properties: Depth, Mud Weight, Funnel Viscosity, API Filtrate, Chloride

Legend for DST: DST Int, DST alt, Core, Tail pipe

Legend for intervals: Core, DST

Legend for oil show: Good Show, Fair Show, Poor Show, Spotted or Trace, Questionable Sin, Dead Oil Sin, Fluorescence, Gas

Legend for gas: Total Gas (units), C1 (units), C2 (units), C3 (units), C4 (units)

Legend for physical properties: Depth, Mud Weight, Funnel Viscosity, API Filtrate, Chloride

Legend for DST: DST Int, DST alt, Core, Tail pipe

Legend for intervals: Core, DST

Legend for oil show: Good Show, Fair Show, Poor Show, Spotted or Trace, Questionable Sin, Dead Oil Sin, Fluorescence, Gas

Legend for gas: Total Gas (units), C1 (units), C2 (units), C3 (units), C4 (units)

Legend for physical properties: Depth, Mud Weight, Funnel Viscosity, API Filtrate, Chloride

Legend for DST: DST Int, DST alt, Core, Tail pipe

Legend for intervals: Core, DST

Legend for oil show: Good Show, Fair Show, Poor Show, Spotted or Trace, Questionable Sin, Dead Oil Sin, Fluorescence, Gas

Legend for gas: Total Gas (units), C1 (units), C2 (units), C3 (units), C4 (units)

Legend for physical properties: Depth, Mud Weight, Funnel Viscosity, API Filtrate, Chloride

Legend for DST: DST Int, DST alt, Core, Tail pipe

Legend for intervals: Core, DST