



TRILOBITE TESTING, INC.

DRILL STEM TEST REPORT

Vincent Oil Corporation
 155 N Market Ste 700
 Wichita, KS 67202
 ATTN: Tom Dudgeon

5-29S-22W Ford
Imel 4-5
 Job Ticket: 57902 **DST#: 3**
 Test Start: 2015.07.10 @ 13:50:10

GENERAL INFORMATION:

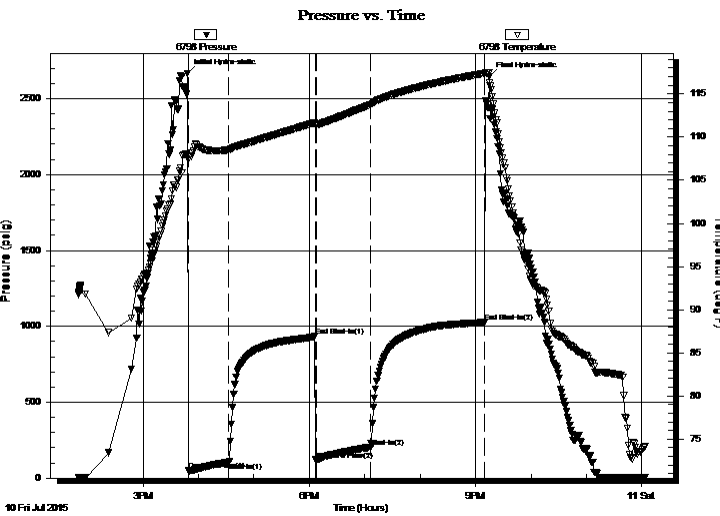
Formation: **Mississippi**
 Deviated: No Whipstock: ft (KB)
 Time Tool Opened: 15:49:25
 Time Test Ended: 00:03:40
 Interval: **5280.00 ft (KB) To 5292.00 ft (KB) (TVD)**
 Total Depth: 5292.00 ft (KB) (TVD)
 Hole Diameter: 7.88 inches Hole Condition: Good
 Test Type: Conventional Bottom Hole (Reset)
 Tester: Leal Cason
 Unit No: 74
 Reference Elevations: 2537.00 ft (KB)
 2524.00 ft (CF)
 KB to GR/CF: 13.00 ft

Serial #: 6798

Inside

Press @ Run Depth: 204.83 psig @ 5281.00 ft (KB) Capacity: 8000.00 psig
 Start Date: 2015.07.10 End Date: 2015.07.11 Last Calib.: 2015.07.11
 Start Time: 13:50:11 End Time: 00:03:40 Time On Btm: 2015.07.10 @ 15:48:10
 Time Off Btm: 2015.07.10 @ 21:15:10

TEST COMMENT: IF: Strong Blow , BOB in 15 seconds, GTS in 40 minutes, Gauged Gas
 IS: Blow Back Built to BOB in 22 minutes
 FF: Strong Blow , BOB & GTS Immediate, Gauged & Caught Sample
 FS: Blow Back Built to BOB in 26 minutes



PRESSURE SUMMARY

Time (Min.)	Pressure (psig)	Temp (deg F)	Annotation
0	2666.80	107.66	Initial Hydro-static
2	49.62	107.39	Open To Flow (1)
45	105.79	108.52	Shut-In(1)
138	933.15	111.66	End Shut-In(1)
140	119.24	111.43	Open To Flow (2)
199	204.83	113.77	Shut-In(2)
322	1025.39	117.38	End Shut-In(2)
327	2645.89	116.27	Final Hydro-static

Recovery

Length (ft)	Description	Volume (bbl)
0.00	4722 GIP	0.00
112.00	Water	0.55
63.00	GMOCW 6%G 12%M 40%O 42%W	0.31
365.00	GSY Oil 20%G 80%O	5.12

* Recovery from multiple tests

Gas Rates

	Choke (inches)	Pressure (psig)	Gas Rate (Mcf/d)
First Gas Rate	0.25	8.00	35.54
Last Gas Rate	0.25	10.00	38.71
Max. Gas Rate	0.25	10.00	38.71



**TRILOBITE
TESTING, INC.**

DRILL STEM TEST REPORT

FLUID SUMMARY

Vincent Oil Corporation
155 N Market Ste 700
Wichita, KS 67202
ATTN: Tom Dudgeon

5-29S-22W Ford
Imel 4-5
Job Ticket: 57902 **DST#: 3**
Test Start: 2015.07.10 @ 13:50:10

Mud and Cushion Information

Mud Type: Gel Chem	Cushion Type:	Oil API: 39.8 deg API
Mud Weight: 9.00 lb/gal	Cushion Length: ft	Water Salinity: 55000 ppm
Viscosity: 52.00 sec/qt	Cushion Volume: bbl	
Water Loss: 9.18 in ³	Gas Cushion Type:	
Resistivity: ohm.m	Gas Cushion Pressure: psig	
Salinity: 7200.00 ppm		
Filter Cake: 0.02 inches		

Recovery Information

Recovery Table

Length ft	Description	Volume bbl
0.00	4722 GIP	0.000
112.00	Water	0.551
63.00	GMOCW 6%G 12%M 40%O 42%W	0.310
365.00	GSY Oil 20%G 80%O	5.120

Total Length: 540.00 ft Total Volume: 5.981 bbl
 Num Fluid Samples: 0 Num Gas Bombs: 0 Serial #:
 Laboratory Name: Laboratory Location:
 Recovery Comments: RW w as .12 @ 80 degrees
 Gravity w as 41 @ 72 degrees



**TRILOBITE
TESTING, INC.**

DRILL STEM TEST REPORT

GAS RATES

Vincent Oil Corporation

5-29S-22W Ford

155 N Market Ste 700
Wichita, KS 67202

Imel 4-5

Job Ticket: 57902

DST#: 3

ATTN: Tom Dudgeon

Test Start: 2015.07.10 @ 13:50:10

Gas Rates Information

Temperature: 59 (deg F)
Relative Density: 0.65
Z Factor: 0.8

Gas Rates Table

Flow Period	Elapsed Time	Choke (inches)	Pressure (psig)	Gas Rate (Mcf/d)
1	45	0.25	8.00	35.54
2	20	0.25	4.00	29.19
2	30	0.25	5.00	30.78
2	40	0.25	6.00	32.36
2	50	0.25	8.00	35.54
2	60	0.25	10.00	38.71

Serial #: 6798

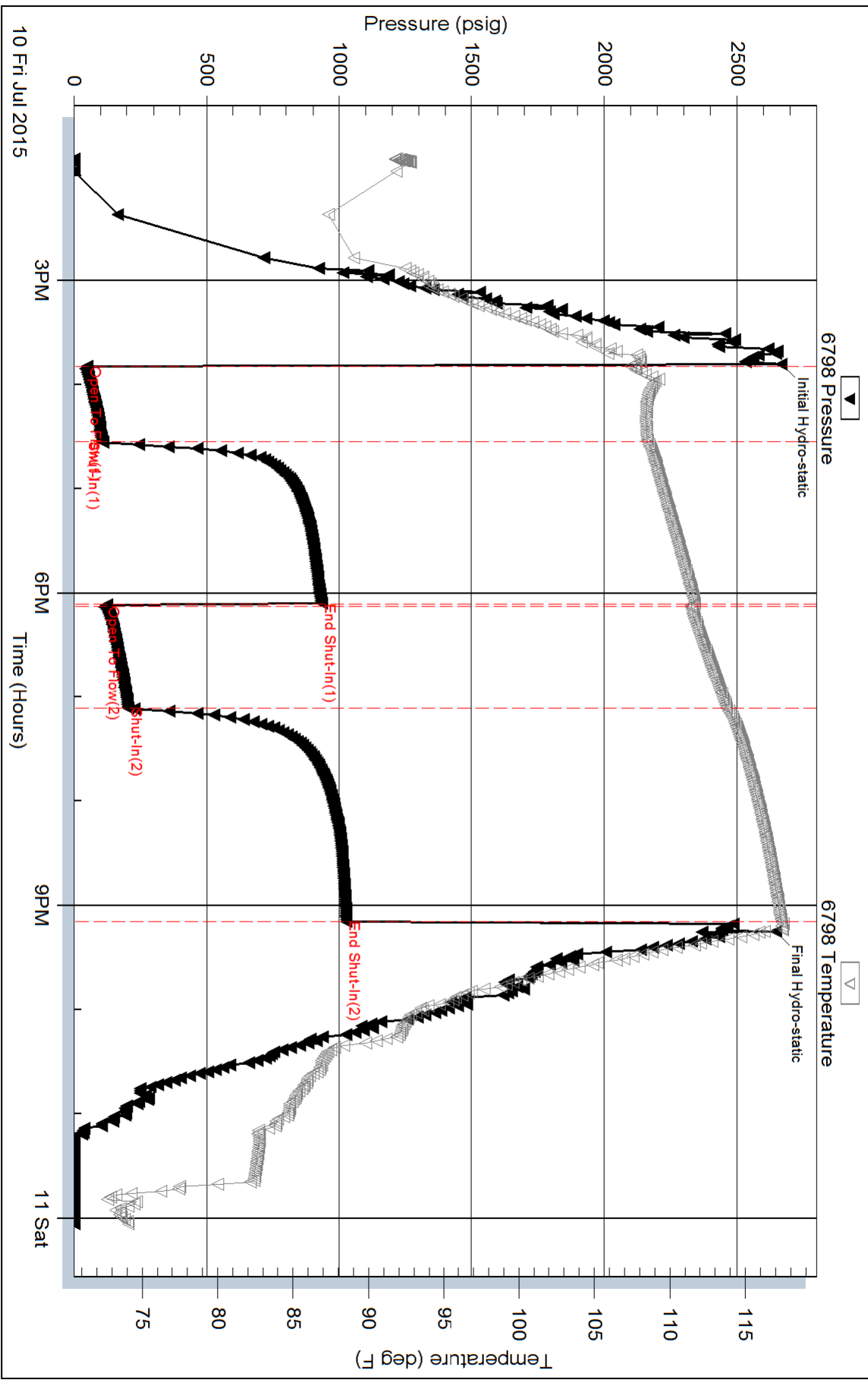
Inside

Vincent Oil Corporation

Inel 4-5

DST Test Number: 3

Pressure vs. Time



Triobite Testing, Inc

Ref. No: 57902

Printed: 2015.07.11 @ 06:58:02