



DRILL STEM TEST REPORT

Prepared For: **Coral Production Corp**

1600 Stout st STE 1500
Denver CO 80202

ATTN: Tim Lauer

Hilt Samler #22-11D

11-2s-42w Cheyenne,KS

Start Date: 2015.10.01 @ 03:40:00

End Date: 2015.10.01 @ 10:43:00

Job Ticket #: 62821 DST #: 1

Trilobite Testing, Inc
1515 Commerce Parkway Hays, KS 67601
ph: 785-625-4778 fax: 785-625-5620

Printed: 2015.10.07 @ 14:44:57

Coral Production Corp

11-2s-42w Cheyenne,KS

Hilt Samler #22-11D

DST # 1

LKC "A"

2015.10.01



TRILOBITE TESTING, INC

DRILL STEM TEST REPORT

Coral Production Corp

11-2s-42w Cheyenne,KS

1600 Stout st STE 1500
Denver CO 80202

Hilt Samler #22-11D

Job Ticket: 62821

DST#: 1

ATTN: Tim Lauer

Test Start: 2015.10.01 @ 03:40:00

GENERAL INFORMATION:

Formation: **LKC "A"**

Deviated: No Whipstock: ft (KB)

Time Tool Opened: 06:38:30

Time Test Ended: 10:43:00

Test Type: Conventional Bottom Hole (Initial)

Tester: Robert Zodrow

Unit No: 66

Interval: 4526.00 ft (KB) To 4585.00 ft (KB) (TVD)

Reference Elevations: 3676.00 ft (KB)

Total Depth: 4585.00 ft (KB) (TVD)

3666.00 ft (CF)

Hole Diameter: 7.88 inches Hole Condition: Fair

KB to GR/CF: 10.00 ft

Serial #: 6741

Inside

Press@RunDepth: 20.50 psig @ 4527.00 ft (KB)

Capacity: 8000.00 psig

Start Date: 2015.10.01

End Date:

2015.10.01

Last Calib.:

2015.10.01

Start Time: 03:40:05

End Time:

10:42:59

Time On Btm:

2015.10.01 @ 06:38:00

Time Off Btm:

2015.10.01 @ 09:12:00

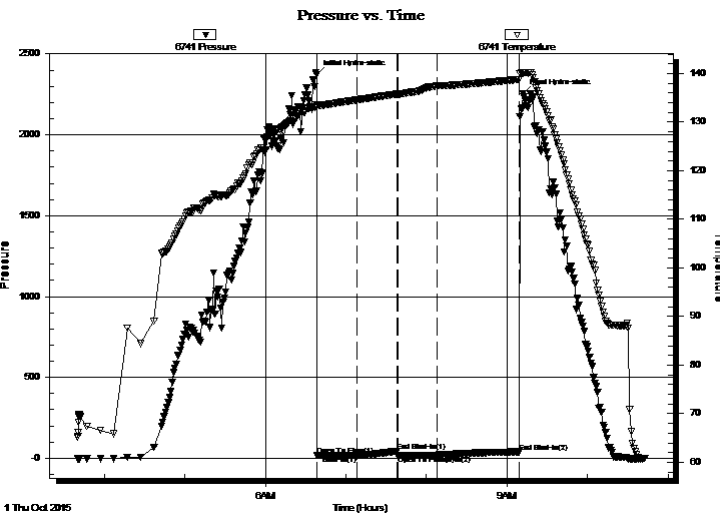
TEST COMMENT: 30-IF- blow built to 3/4" Died back to 1/2"

Hit A Bridge AT 1550'

30-ISI- No return

30-FF- No blow

60-FSI- No return



PRESSURE SUMMARY

Time (Min.)	Pressure (psig)	Temp (deg F)	Annotation
0	2372.36	133.47	Initial Hydro-static
1	19.09	133.21	Open To Flow (1)
30	16.81	134.57	Shut-In(1)
60	43.12	135.77	End Shut-In(1)
61	15.88	135.77	Open To Flow (2)
90	20.50	137.50	Shut-In(2)
151	40.02	138.78	End Shut-In(2)
154	2255.70	140.11	Final Hydro-static

Recovery

Length (ft)	Description	Volume (bbl)
5.00	MUD 100%M	0.07

Gas Rates

Choke (inches)	Pressure (psig)	Gas Rate (Mcf/d)



TRILOBITE TESTING, INC

DRILL STEM TEST REPORT

Coral Production Corp

11-2s-42w Cheyenne,KS

1600 Stout st STE 1500
Denver CO 80202

Hilt Samler #22-11D

Job Ticket: 62821

DST#: 1

ATTN: Tim Lauer

Test Start: 2015.10.01 @ 03:40:00

GENERAL INFORMATION:

Formation: **LKC "A"**

Deviated: No Whipstock: ft (KB)

Time Tool Opened: 06:38:30

Time Test Ended: 10:43:00

Test Type: Conventional Bottom Hole (Initial)

Tester: Robert Zodrow

Unit No: 66

Interval: 4526.00 ft (KB) To 4585.00 ft (KB) (TVD)

Reference Elevations: 3676.00 ft (KB)

Total Depth: 4585.00 ft (KB) (TVD)

3666.00 ft (CF)

Hole Diameter: 7.88 inches Hole Condition: Fair

KB to GR/CF: 10.00 ft

Serial #: 8521 Outside

Press@RunDepth: psig @ 4527.00 ft (KB)

Capacity: 8000.00 psig

Start Date: 2015.10.01 End Date: 2015.10.01

Last Calib.: 2015.10.01

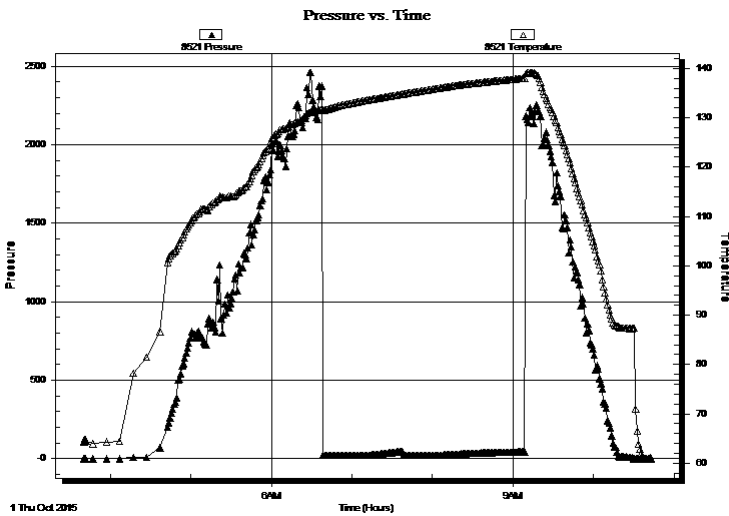
Start Time: 03:40:05 End Time: 10:42:59

Time On Btm:

Time Off Btm:

TEST COMMENT: 30-IF- blow built to 3/4" Died back to 1/2"
30-IS- No return
30-FF- No blow
60-FS- No return

Hit A Bridge AT 1550'



PRESSURE SUMMARY

Time (Min.)	Pressure (psig)	Temp (deg F)	Annotation

Recovery

Length (ft)	Description	Volume (bbl)
5.00	MUD 100%M	0.07

Gas Rates

	Choke (inches)	Pressure (psig)	Gas Rate (Mcf/d)



**TRILOBITE
TESTING, INC**

DRILL STEM TEST REPORT

TOOL DIAGRAM

Coral Production Corp

11-2s-42w Cheyenne,KS

1600 Stout st STE 1500
Denver CO 80202

Hilt Samler #22-11D

Job Ticket: 62821

DST#: 1

ATTN: Tim Lauer

Test Start: 2015.10.01 @ 03:40:00

Tool Information

Drill Pipe:	Length: 4504.00 ft	Diameter: 3.80 inches	Volume: 63.18 bbl	Tool Weight: 2500.00 lb
Heavy Wt. Pipe:	Length: 0.00 ft	Diameter: 0.00 inches	Volume: 0.00 bbl	Weight set on Packer: 25000.00 lb
Drill Collar:	Length: 0.00 ft	Diameter: 2.25 inches	Volume: 0.00 bbl	Weight to Pull Loose: 78000.00 lb
			<u>Total Volume: 63.18 bbl</u>	Tool Chased ft
Drill Pipe Above KB:	5.00 ft			String Weight: Initial 52000.00 lb
Depth to Top Packer:	4526.00 ft			Final 52000.00 lb
Depth to Bottom Packer:	ft			
Interval between Packers:	59.00 ft			
Tool Length:	86.00 ft			
Number of Packers:	2	Diameter: 6.75 inches		

Tool Comments:

Tool Description

Tool Description	Length (ft)	Serial No.	Position	Depth (ft)	Accum. Lengths
Shut In Tool	5.00			4504.00	
Hydraulic tool	5.00			4509.00	
Jars	5.00			4514.00	
Safety Joint	3.00			4517.00	
Packer	5.00			4522.00	27.00 Bottom Of Top Packer
Packer	4.00			4526.00	
Stubb	1.00			4527.00	
Recorder	0.00	6741	Inside	4527.00	
Recorder	0.00	8521	Outside	4527.00	
Perforations	22.00			4549.00	
Change Over Sub	1.00			4550.00	
Drill Pipe	31.00			4581.00	
Change Over Sub	1.00			4582.00	
Bullnose	3.00			4585.00	59.00 Bottom Packers & Anchor

Total Tool Length: 86.00



**TRILOBITE
TESTING, INC**

DRILL STEM TEST REPORT

FLUID SUMMARY

Coral Production Corp

11-2s-42w Cheyenne,KS

1600 Stout st STE 1500
Denver CO 80202

Hilt Samler #22-11D

Job Ticket: 62821

DST#: 1

ATTN: Tim Lauer

Test Start: 2015.10.01 @ 03:40:00

Mud and Cushion Information

Mud Type: Gel Chem

Cushion Type:

Oil API:

deg API

Mud Weight: 9.00 lb/gal

Cushion Length:

ft

Water Salinity:

ppm

Viscosity: 50.00 sec/qt

Cushion Volume:

bbbl

Water Loss: 8.77 in³

Gas Cushion Type:

Resistivity: 0.00 ohm.m

Gas Cushion Pressure:

psig

Salinity: 500.00 ppm

Filter Cake: 1.00 inches

Recovery Information

Recovery Table

Length ft	Description	Volume bbl
5.00	MUD 100%M	0.070

Total Length: 5.00 ft Total Volume: 0.070 bbl

Num Fluid Samples: 0

Num Gas Bombs: 0

Serial #:

Laboratory Name:

Laboratory Location:

Recovery Comments:

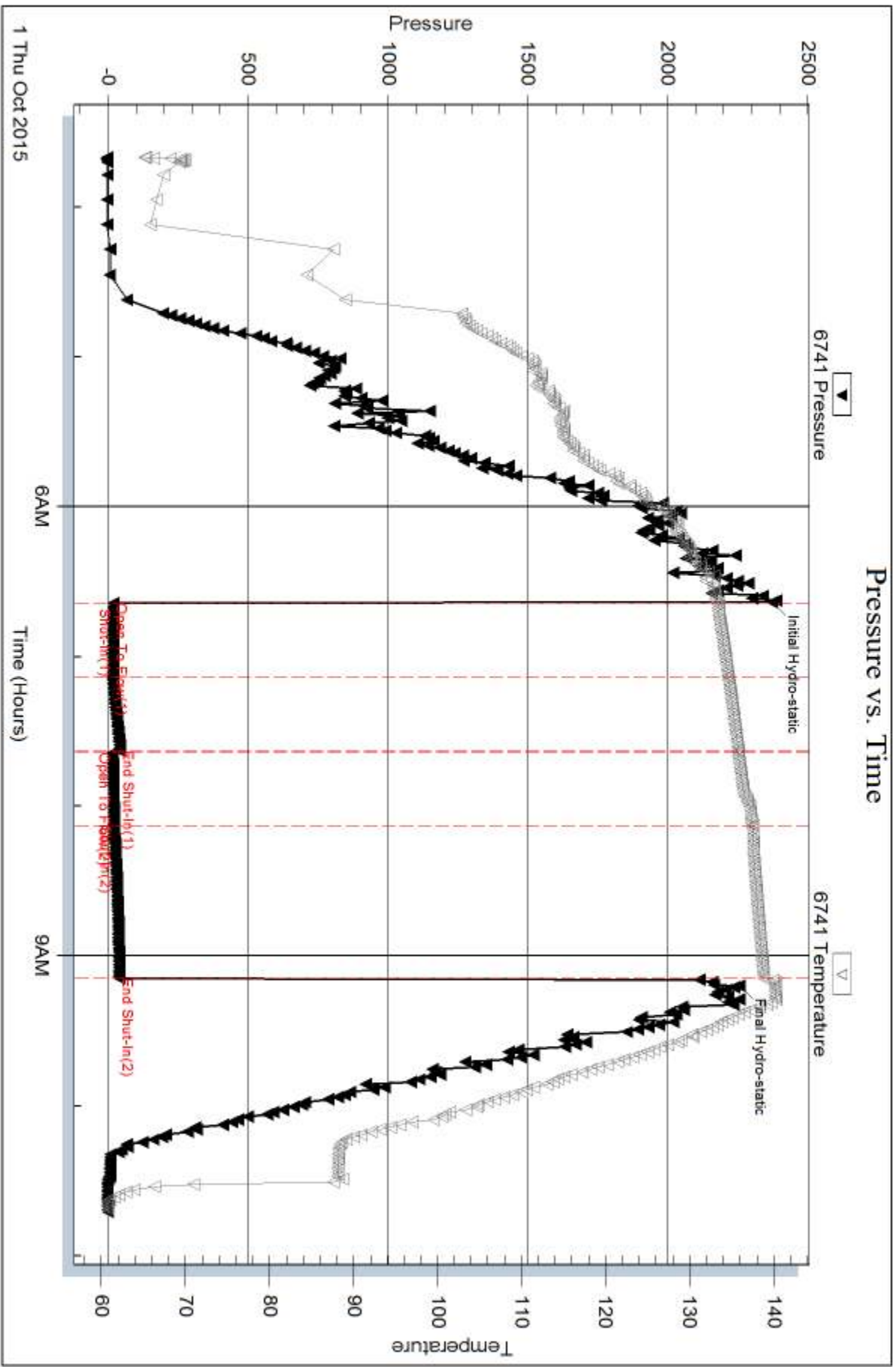
Serial #: 6741

Inside

Coral Production Corp

Hilt Sander #22-11D

DST Test Number: 1

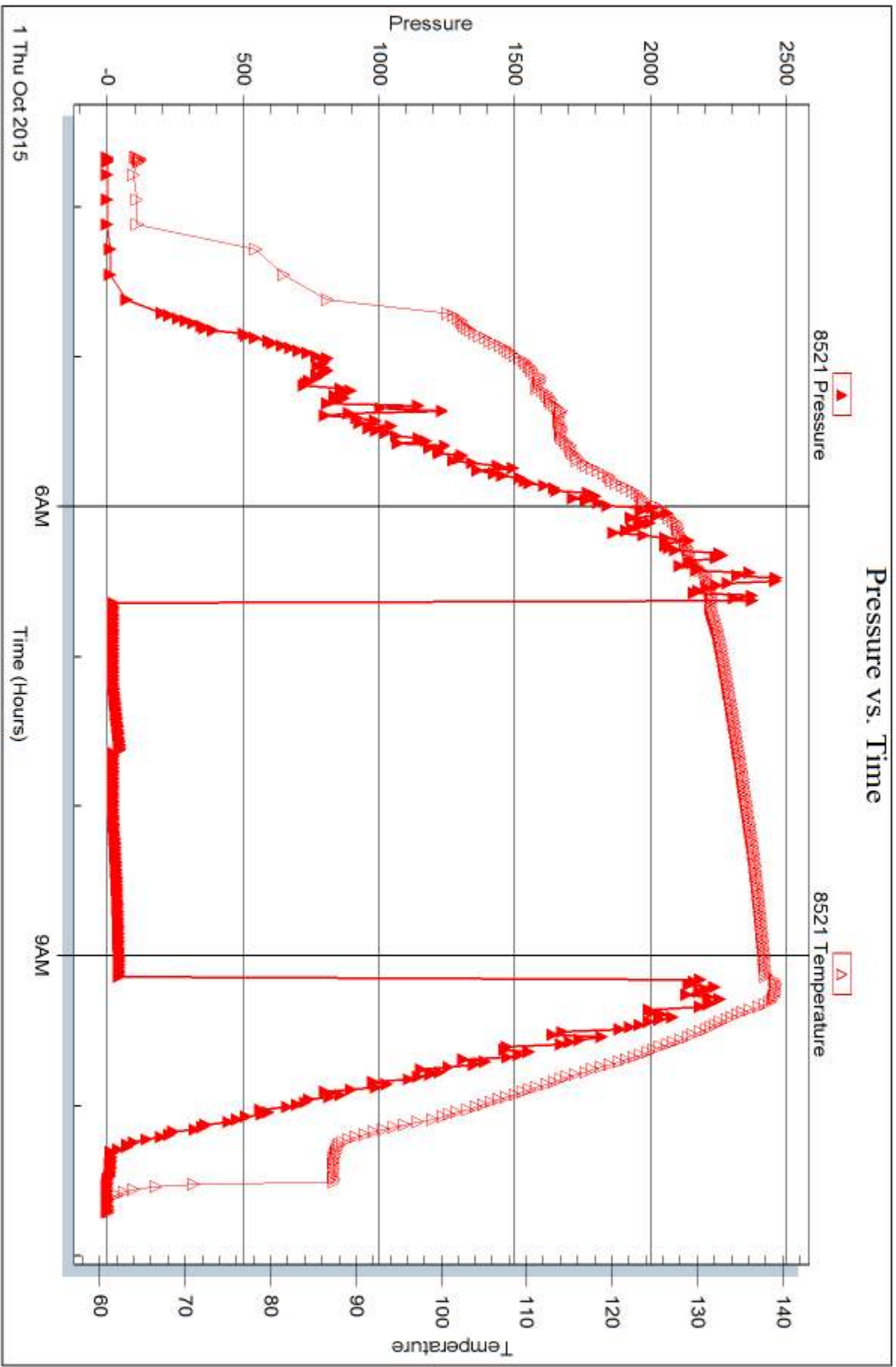


Serial #: 8521

Outside Coral Production Corp

Hilt Sander #22-11D

DST Test Number: 1



Triobite Testing, Inc

Ref. No: 62821

Printed: 2015.10.07 @ 14:44:59



DRILL STEM TEST REPORT

Prepared For: **Coral Production Corp**

1600 Stout st STE 1500
Denver CO 80202

ATTN: Tim Lauer

Hilt Samler #22-11D

11-2s-42w Cheyenne,KS

Start Date: 2015.10.02 @ 15:15:00

End Date: 2015.10.03 @ 01:10:00

Job Ticket #: 62822 DST #: 2

Trilobite Testing, Inc
1515 Commerce Parkway Hays, KS 67601
ph: 785-625-4778 fax: 785-625-5620

Printed: 2015.10.07 @ 14:43:38



TRILOBITE TESTING, INC

DRILL STEM TEST REPORT

Coral Production Corp

11-2s-42w Cheyenne,KS

1600 Stout st STE 1500
Denver CO 80202

Hilt Samler #22-11D

Job Ticket: 62822

DST#: 2

ATTN: Tim Lauer

Test Start: 2015.10.02 @ 15:15:00

GENERAL INFORMATION:

Formation: **LKC "J"**

Deviated: No Whipstock: ft (KB)

Time Tool Opened: 18:32:30

Time Test Ended: 01:10:00

Test Type: Conventional Bottom Hole (Reset)

Tester: Robert Zodrow

Unit No: 66

Interval: 4760.00 ft (KB) To 4801.00 ft (KB) (TVD)

Reference Elevations: 3676.00 ft (KB)

Total Depth: 4801.00 ft (KB) (TVD)

3666.00 ft (CF)

Hole Diameter: 7.88 inches Hole Condition: Fair

KB to GR/CF: 10.00 ft

Serial #: 6741

Inside

Press@RunDepth: 419.93 psig @ 4761.00 ft (KB)

Capacity: 8000.00 psig

Start Date: 2015.10.02

End Date:

2015.10.03

Last Calib.: 2015.10.03

Start Time: 15:15:05

End Time:

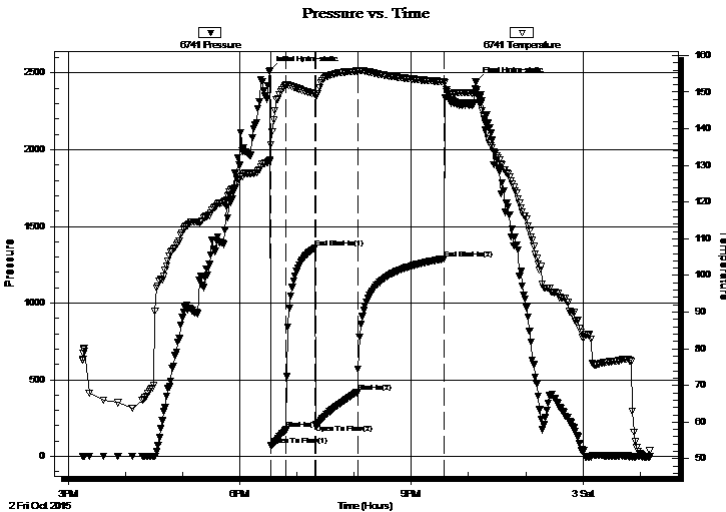
01:10:00

Time On Btm: 2015.10.02 @ 18:31:30

Time Off Btm: 2015.10.02 @ 22:07:30

TEST COMMENT: 15-IF- Bob in 5 mins
30-ISI- Surface blow on return started in 23 mins
45-FF- Bob in 8 mins
60-FSI- No return

PRESSURE SUMMARY



Time (Min.)	Pressure (psig)	Temp (deg F)	Annotation
0	2517.23	131.51	Initial Hydro-static
1	69.76	135.69	Open To Flow (1)
17	174.53	151.82	Shut-In(1)
48	1359.10	149.53	End Shut-In(1)
48	207.89	148.93	Open To Flow (2)
92	419.93	155.73	Shut-In(2)
183	1288.90	152.82	End Shut-In(2)
216	2441.91	149.91	Final Hydro-static

Recovery

Length (ft)	Description	Volume (bbl)
682.00	GOCMW 15%G 5%O 50%W 30%M	9.57
196.00	GOCWM 5%G 10%O 15%W 70%M	2.75
10.00	GO 5%G 95%O	0.14

* Recovery from multiple tests

Gas Rates

Choke (inches)	Pressure (psig)	Gas Rate (Mcf/d)



TRILOBITE TESTING, INC.

DRILL STEM TEST REPORT

Coral Production Corp
1600 Stout st STE 1500
Denver CO 80202
ATTN: Tim Lauer

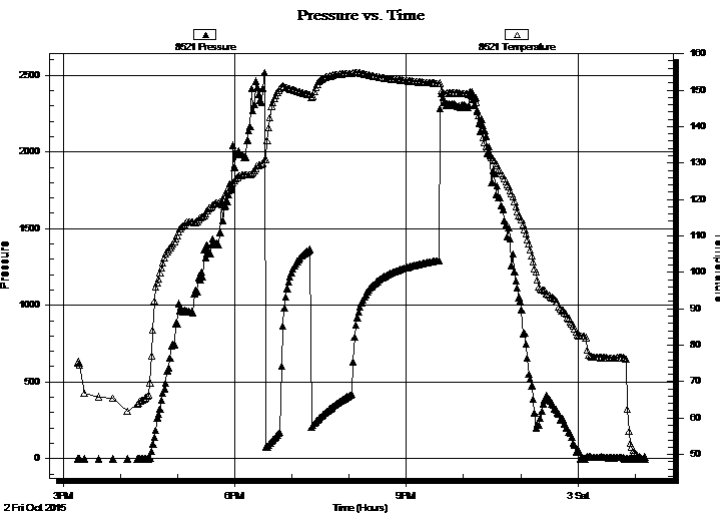
11-2s-42w Cheyenne, KS
Hilt Samler #22-11D
Job Ticket: 62822 **DST#: 2**
Test Start: 2015.10.02 @ 15:15:00

GENERAL INFORMATION:

Formation: **LKC "J"**
Deviated: No Whipstock: ft (KB) Test Type: Conventional Bottom Hole (Reset)
Time Tool Opened: 18:32:30 Tester: Robert Zodrow
Time Test Ended: 01:10:00 Unit No: 66
Interval: 4760.00 ft (KB) To 4801.00 ft (KB) (TVD) Reference Elevations: 3676.00 ft (KB)
Total Depth: 4801.00 ft (KB) (TVD) 3666.00 ft (CF)
Hole Diameter: 7.88 inches Hole Condition: Fair KB to GR/CF: 10.00 ft

Serial #: 8521 Outside
Press@RunDepth: psig @ 4761.00 ft (KB) Capacity: 8000.00 psig
Start Date: 2015.10.02 End Date: 2015.10.03 Last Calib.: 2015.10.03
Start Time: 15:15:05 End Time: 01:10:00 Time On Btm: Time Off Btm:

TEST COMMENT: 15-IF- Bob in 5 mins
30-IS- Surface blow on return started in 23 mins
45-FF- Bob in 8 mins
60-FS- No return



PRESSURE SUMMARY

Time (Min.)	Pressure (psig)	Temp (deg F)	Annotation

Recovery

Length (ft)	Description	Volume (bbl)
682.00	GOCMW 15%G 5%O 50%W 30%M	9.57
196.00	GOCWM 5%G 10%O 15%W 70%M	2.75
10.00	GO 5%G 95%O	0.14

Gas Rates

	Choke (inches)	Pressure (psig)	Gas Rate (Mcf/d)

* Recovery from multiple tests



**TRILOBITE
TESTING, INC**

DRILL STEM TEST REPORT

TOOL DIAGRAM

Coral Production Corp

11-2s-42w Cheyenne,KS

1600 Stout st STE 1500
Denver CO 80202

Hilt Samler #22-11D

Job Ticket: 62822

DST#: 2

ATTN: Tim Lauer

Test Start: 2015.10.02 @ 15:15:00

Tool Information

Drill Pipe:	Length: 4755.00 ft	Diameter: 3.80 inches	Volume: 66.70 bbl	Tool Weight:	2500.00 lb
Heavy Wt. Pipe:	Length: 0.00 ft	Diameter: 0.00 inches	Volume: 0.00 bbl	Weight set on Packer:	25000.00 lb
Drill Collar:	Length: 0.00 ft	Diameter: 2.25 inches	Volume: 0.00 bbl	Weight to Pull Loose:	68000.00 lb
			<u>Total Volume: 66.70 bbl</u>	Tool Chased	ft
Drill Pipe Above KB:	22.00 ft			String Weight: Initial	52000.00 lb
Depth to Top Packer:	4760.00 ft			Final	56000.00 lb
Depth to Bottom Packer:	ft				
Interval between Packers:	41.00 ft				
Tool Length:	68.00 ft				
Number of Packers:	2	Diameter: 6.75 inches			

Tool Comments:

Tool Description

Tool Description	Length (ft)	Serial No.	Position	Depth (ft)	Accum. Lengths
Shut In Tool	5.00			4738.00	
Hydraulic tool	5.00			4743.00	
Jars	5.00			4748.00	
Safety Joint	3.00			4751.00	
Packer	5.00			4756.00	27.00 Bottom Of Top Packer
Packer	4.00			4760.00	
Stubb	1.00			4761.00	
Recorder	0.00	6741	Inside	4761.00	
Recorder	0.00	8521	Outside	4761.00	
Perforations	5.00			4766.00	
Change Over Sub	1.00			4767.00	
Drill Pipe	30.00			4797.00	
Change Over Sub	1.00			4798.00	
Bullnose	3.00			4801.00	41.00 Bottom Packers & Anchor

Total Tool Length: 68.00



**TRILOBITE
TESTING, INC**

DRILL STEM TEST REPORT

FLUID SUMMARY

Coral Production Corp

11-2s-42w Cheyenne,KS

1600 Stout st STE 1500
Denver CO 80202

Hilt Samler #22-11D

Job Ticket: 62822

DST#: 2

ATTN: Tim Lauer

Test Start: 2015.10.02 @ 15:15:00

Mud and Cushion Information

Mud Type: Gel Chem

Cushion Type:

Oil API:

31 deg API

Mud Weight: 9.00 lb/gal

Cushion Length:

ft

Water Salinity:

14000 ppm

Viscosity: 52.00 sec/qt

Cushion Volume:

bbbl

Water Loss: 9.18 in³

Gas Cushion Type:

Resistivity: 0.00 ohm.m

Gas Cushion Pressure:

psig

Salinity: 500.00 ppm

Filter Cake: 1.00 inches

Recovery Information

Recovery Table

Length ft	Description	Volume bbbl
682.00	GOCMW 15%G 5%O 50%W 30%M	9.567
196.00	GOCWM 5%G 10%O 15%W 70%M	2.749
10.00	GO 5%G 95%O	0.140

Total Length: 888.00 ft Total Volume: 12.456 bbl

Num Fluid Samples: 0

Num Gas Bombs: 0

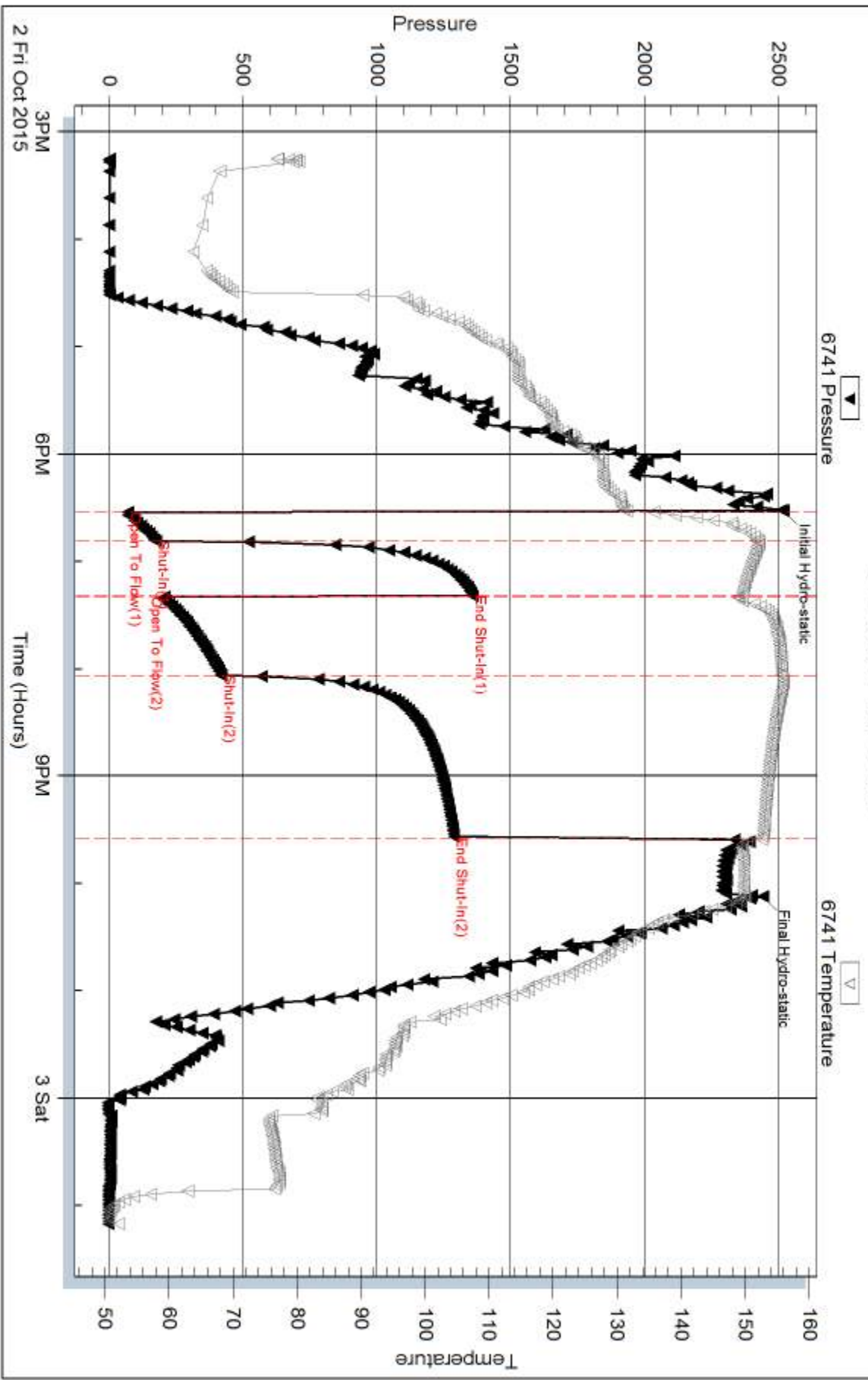
Serial #:

Laboratory Name:

Laboratory Location:

Recovery Comments: RW = .740 @ 54 Deg = 14000

Pressure vs. Time

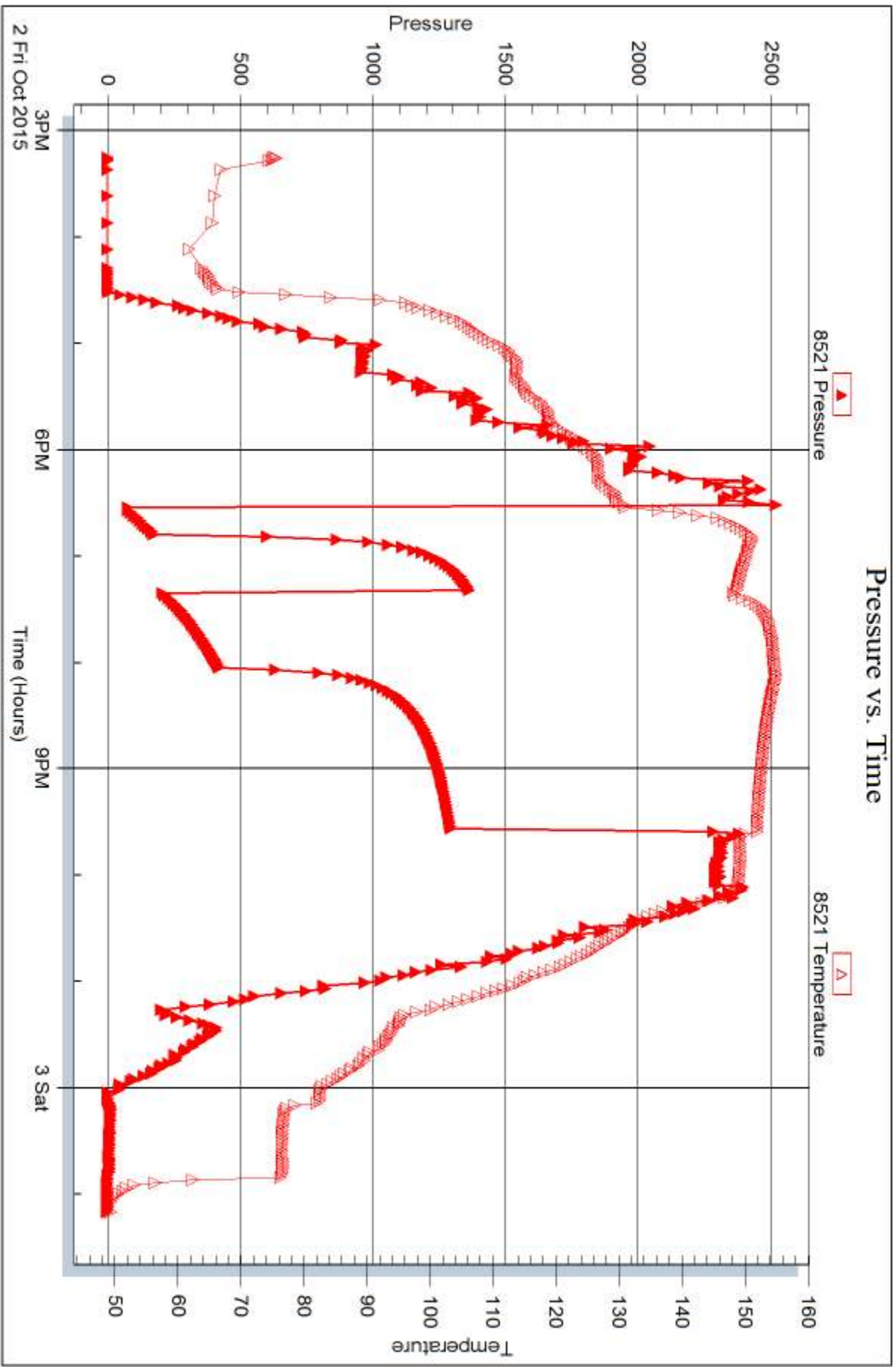


Serial #: 8521

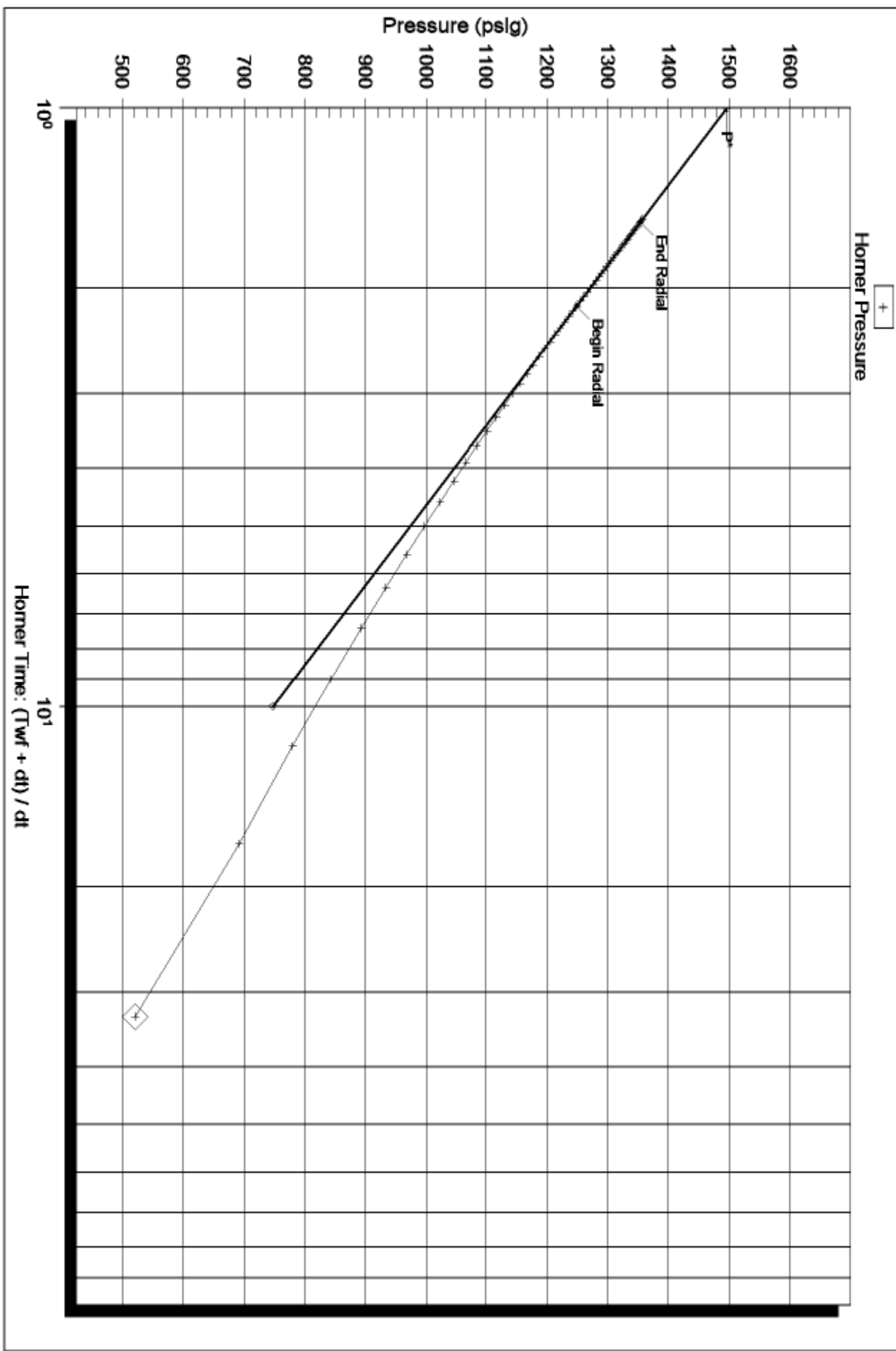
Outside Coral Production Corp

Hilt Santer #22-11D

DST Test Number: 2



Horner Plot



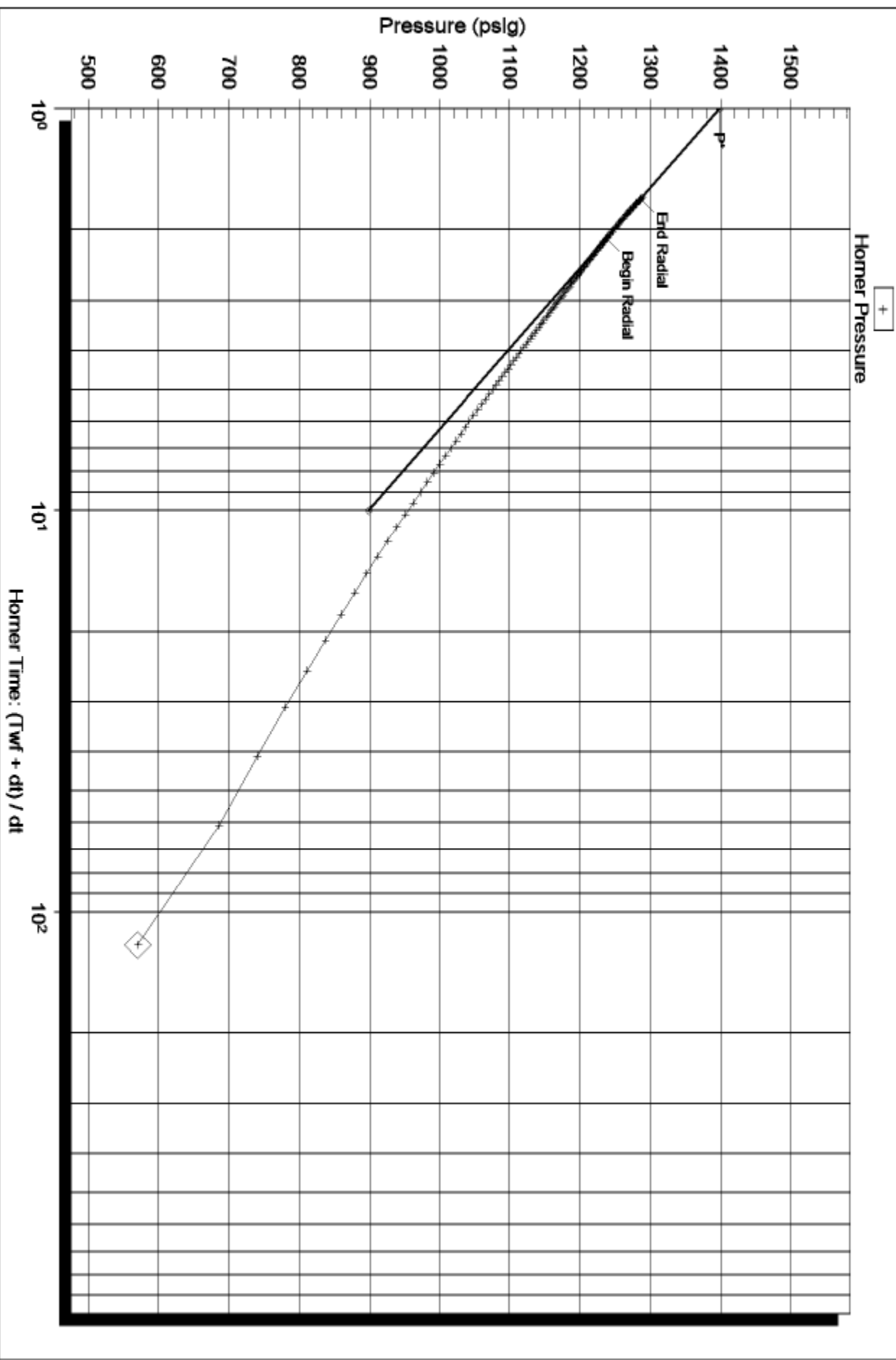
Serial Number: 6741 (Inside)

P^* : 1496.33

Slope (m) : 748.76 kpa/log cycle

Flow Cycle: 1

Horner Plot



Serial Number: 6741 (Inside)

P* : 1398.63

Slope (m) : 499.92 kpa/log cycle

Flow Cycle: 2



DRILL STEM TEST REPORT

Prepared For: **Coral Production Corp**

1600 Stout st STE 1500
Denver CO 80202

ATTN: Tim Lauer

Hilt Samler #22-11D

11-2s-42w Cheyenne,KS

Start Date: 2015.10.03 @ 17:00:00

End Date: 2015.10.04 @ 00:04:30

Job Ticket #: 62823 DST #: 3

Trilobite Testing, Inc
1515 Commerce Parkway Hays, KS 67601
ph: 785-625-4778 fax: 785-625-5620

Printed: 2015.10.07 @ 14:20:18

Coral Production Corp

11-2s-42w Cheyenne,KS

Hilt Samler #22-11D

DST # 3

LKC "K&L"

2015.10.03



TRILOBITE TESTING, INC

DRILL STEM TEST REPORT

Coral Production Corp

11-2s-42w Cheyenne,KS

1600 Stout st STE 1500
Denver CO 80202

Hilt Samler #22-11D

Job Ticket: 62823

DST#: 3

ATTN: Tim Lauer

Test Start: 2015.10.03 @ 17:00:00

GENERAL INFORMATION:

Formation: **LKC "K&L"**

Deviated: No Whipstock: ft (KB)

Time Tool Opened: 19:16:30

Time Test Ended: 00:04:30

Test Type: Conventional Bottom Hole (Reset)

Tester: Robert Zodrow

Unit No: 66

Interval: 4840.00 ft (KB) To 4893.00 ft (KB) (TVD)

Reference Elevations: 3676.00 ft (KB)

Total Depth: 4893.00 ft (KB) (TVD)

3666.00 ft (CF)

Hole Diameter: 7.88 inches Hole Condition: Fair

KB to GR/CF: 10.00 ft

Serial #: 6741

Inside

Press@RunDepth: 32.35 psig @ 4841.00 ft (KB)

Capacity: 8000.00 psig

Start Date: 2015.10.03

End Date:

2015.10.04

Last Calib.: 2015.10.04

Start Time: 17:00:05

End Time:

00:04:29

Time On Btm: 2015.10.03 @ 19:16:00

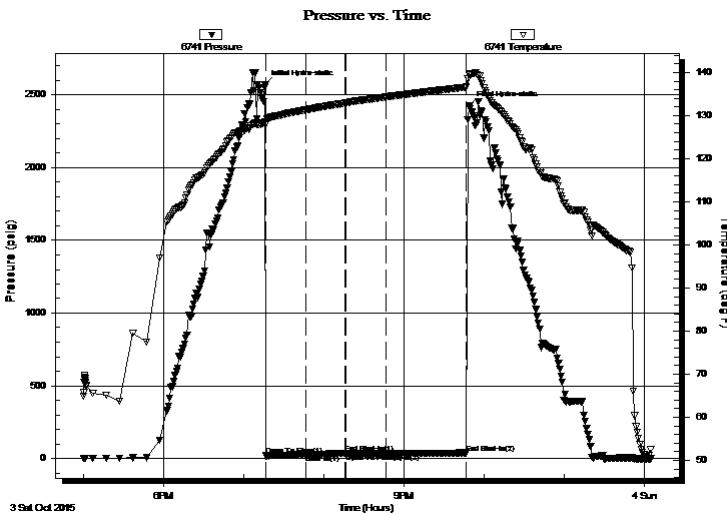
Time Off Btm: 2015.10.03 @ 21:49:00

TEST COMMENT: 30-IF- Blow built to 1/2"

30-ISI- No return

30-FF- No blow

60-FSI- No return



PRESSURE SUMMARY

Time (Min.)	Pressure (psig)	Temp (deg F)	Annotation
0	2573.04	128.55	Initial Hydro-static
1	18.76	127.82	Open To Flow (1)
31	26.77	131.33	Shut-In(1)
60	34.39	132.90	End Shut-In(1)
61	33.06	132.92	Open To Flow (2)
91	32.35	134.31	Shut-In(2)
151	37.33	136.61	End Shut-In(2)
153	2425.38	139.54	Final Hydro-static

Recovery

Length (ft)	Description	Volume (bbl)
5.00	MUD 100%M	0.07

* Recovery from multiple tests

Gas Rates

Choke (inches)	Pressure (psig)	Gas Rate (Mcf/d)



TRILOBITE
TESTING, INC.

DRILL STEM TEST REPORT

Coral Production Corp

11-2s-42w Cheyenne,KS

1600 Stout st STE 1500
Denver CO 80202

Hilt Samler #22-11D

ATTN: Tim Lauer

Job Ticket: 62823 **DST#: 3**

Test Start: 2015.10.03 @ 17:00:00

GENERAL INFORMATION:

Formation: **LKC "K&L"**

Deviated: No Whipstock: ft (KB)

Time Tool Opened: 19:16:30

Time Test Ended: 00:04:30

Test Type: Conventional Bottom Hole (Reset)

Tester: Robert Zodrow

Unit No: 66

Interval: 4840.00 ft (KB) To 4893.00 ft (KB) (TVD)

Total Depth: 4893.00 ft (KB) (TVD)

Hole Diameter: 7.88 inches Hole Condition: Fair

Reference Elevations: 3676.00 ft (KB)

3666.00 ft (CF)

KB to GR/CF: 10.00 ft

Serial #: 8521 Outside

Press@RunDepth: psig @ 4841.00 ft (KB)

Start Date: 2015.10.03

Start Time: 17:00:05

End Date: 2015.10.04

End Time: 00:04:29

Capacity: 8000.00 psig

Last Calib.: 2015.10.04

Time On Btm:

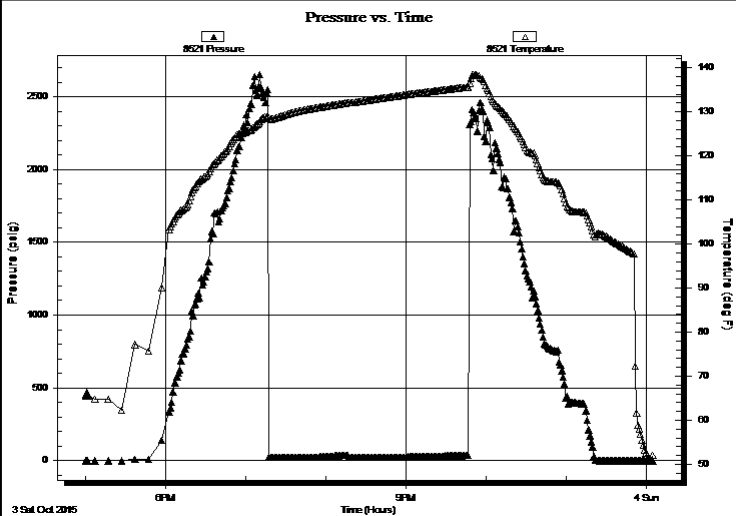
Time Off Btm:

TEST COMMENT: 30-IF- Blow built to 1/2"

30-ISI- No return

30-FF- No blow

60-FSI- No return



PRESSURE SUMMARY

Time (Min.)	Pressure (psig)	Temp (deg F)	Annotation

Recovery

Length (ft)	Description	Volume (bbl)
5.00	MUD 100%M	0.07

* Recovery from multiple tests

Gas Rates

Choke (inches)	Pressure (psig)	Gas Rate (Mcf/d)



**TRILOBITE
TESTING, INC**

DRILL STEM TEST REPORT

TOOL DIAGRAM

Coral Production Corp

11-2s-42w Cheyenne,KS

1600 Stout st STE 1500
Denver CO 80202

Hilt Samler #22-11D

Job Ticket: 62823

DST#: 3

ATTN: Tim Lauer

Test Start: 2015.10.03 @ 17:00:00

Tool Information

Drill Pipe:	Length: 4845.00 ft	Diameter: 3.80 inches	Volume: 67.96 bbl	Tool Weight:	2500.00 lb
Heavy Wt. Pipe:	Length: 0.00 ft	Diameter: 0.00 inches	Volume: 0.00 bbl	Weight set on Packer:	25000.00 lb
Drill Collar:	Length: 0.00 ft	Diameter: 2.25 inches	Volume: 0.00 bbl	Weight to Pull Loose:	70000.00 lb
			<u>Total Volume: 67.96 bbl</u>	Tool Chased	ft
Drill Pipe Above KB:	32.00 ft			String Weight: Initial	52000.00 lb
Depth to Top Packer:	4840.00 ft			Final	52000.00 lb
Depth to Bottom Packer:	ft				
Interval between Packers:	53.00 ft				
Tool Length:	80.00 ft				
Number of Packers:	2	Diameter: 6.75 inches			

Tool Comments:

Tool Description

Tool Description	Length (ft)	Serial No.	Position	Depth (ft)	Accum. Lengths
Shut In Tool	5.00			4818.00	
Hydraulic tool	5.00			4823.00	
Jars	5.00			4828.00	
Safety Joint	3.00			4831.00	
Packer	5.00			4836.00	27.00 Bottom Of Top Packer
Packer	4.00			4840.00	
Stubb	1.00			4841.00	
Recorder	0.00	6741	Inside	4841.00	
Recorder	0.00	8521	Outside	4841.00	
Perforations	16.00			4857.00	
Change Over Sub	1.00			4858.00	
Drill Pipe	31.00			4889.00	
Change Over Sub	1.00			4890.00	
Bullnose	3.00			4893.00	53.00 Bottom Packers & Anchor

Total Tool Length: 80.00



**TRILOBITE
TESTING, INC**

DRILL STEM TEST REPORT

FLUID SUMMARY

Coral Production Corp

11-2s-42w Cheyenne,KS

1600 Stout st STE 1500
Denver CO 80202

Hilt Samler #22-11D

Job Ticket: 62823

DST#: 3

ATTN: Tim Lauer

Test Start: 2015.10.03 @ 17:00:00

Mud and Cushion Information

Mud Type: Gel Chem

Cushion Type:

Oil API:

deg API

Mud Weight: 9.00 lb/gal

Cushion Length:

ft

Water Salinity:

ppm

Viscosity: 68.00 sec/qt

Cushion Volume:

bbbl

Water Loss: 9.38 in³

Gas Cushion Type:

Resistivity: 0.00 ohm.m

Gas Cushion Pressure:

psig

Salinity: 500.00 ppm

Filter Cake: 1.00 inches

Recovery Information

Recovery Table

Length ft	Description	Volume bbl
5.00	MUD 100%M	0.070

Total Length: 5.00 ft Total Volume: 0.070 bbl

Num Fluid Samples: 0

Num Gas Bombs: 0

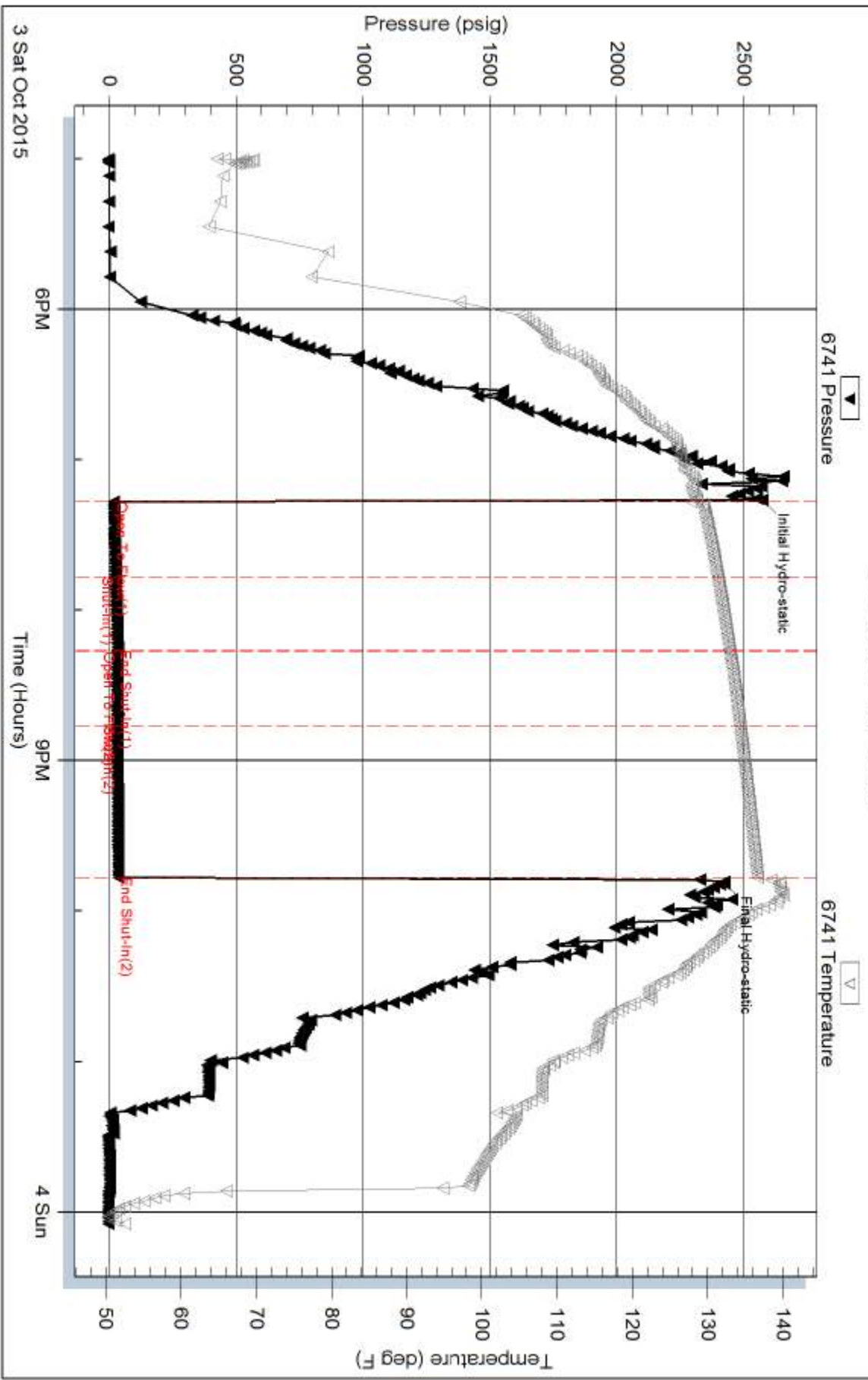
Serial #:

Laboratory Name:

Laboratory Location:

Recovery Comments:

Pressure vs. Time

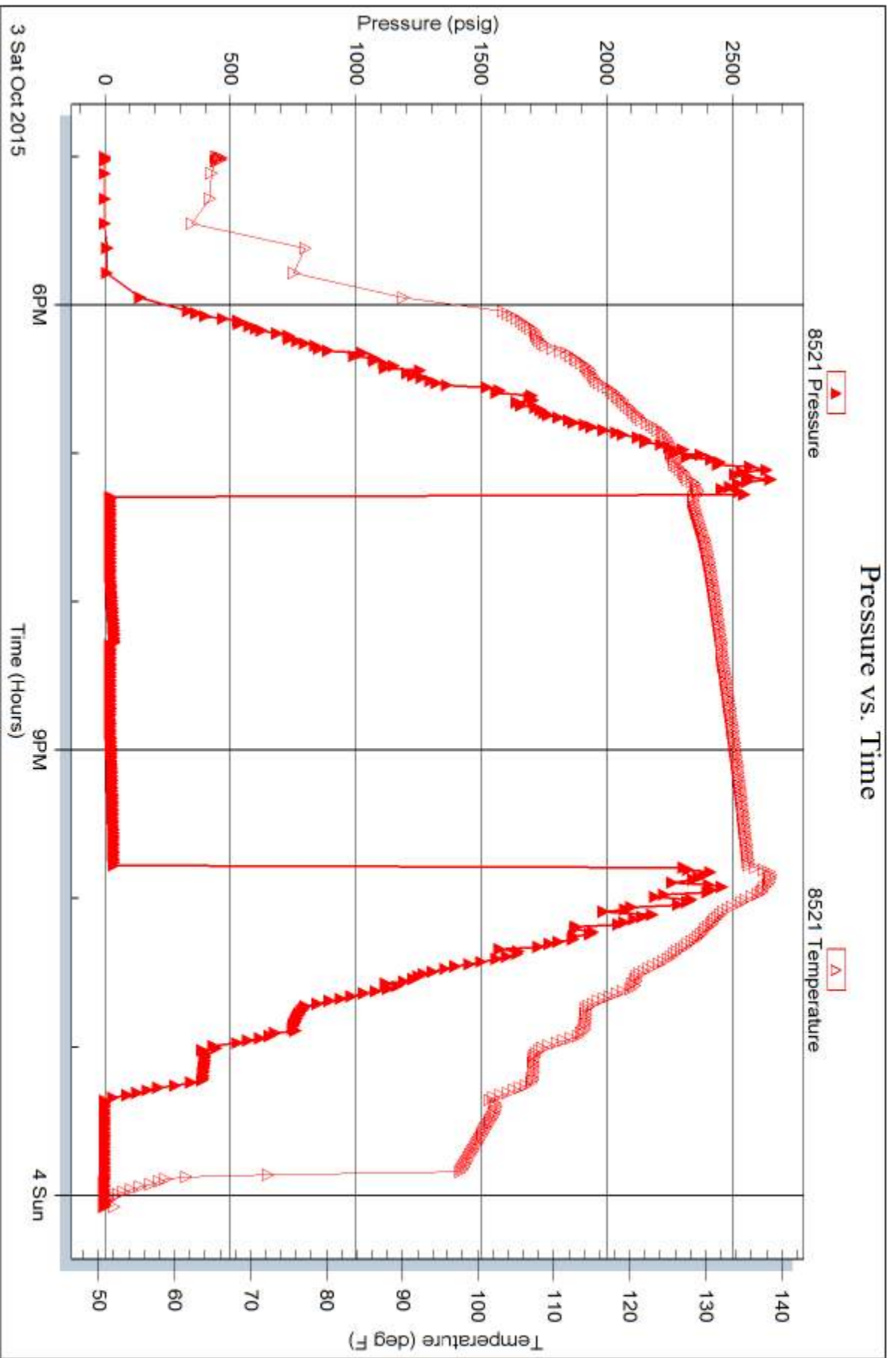


Serial #: 8521

Outside Coral Production Corp

Hilt Santer #22-11D

DST Test Number: 3





TRILOBITE TESTING INC.

1515 Commerce Parkway • Hays, Kansas 67601

Test Ticket

NO. 62821

Well Name & No. Hilt-Samler 22-110 Test No. 1 Date 10-1-2015
 Company Coral Production Corp Elevation 3676 KB 3666 GL
 Address 11600 Stout St STE 1500 Denver CO 80202
 Co. Rep / Geo. Tim Lauer Rig Duke 4
 Location: Sec. 11 Twp. 25 Rge. 42W Co. Cheyenne State KS

Interval Tested 4526 — 4585 Zone Tested LKC "A"
 Anchor Length 59 Drill Pipe Run 4504 Mud Wt. 9
 Top Packer Depth 4522 (shale) Drill Collars Run 0 Vis 50
 Bottom Packer Depth 4526 (shale) Wt. Pipe Run 0 WL 8.8
 Total Depth 4585 Chlorides 500 ppm System LCM 2.5
 Blow Description IF - Blow built to 3/4" died back to 1/2" Hit a bridge at 1550'
ISI - No return
FF - NO blow
FSI - NO return

Rec	Feet of	%gas	%oil	%water	%mud
<u>5</u>	<u>mud</u>			<u>100</u>	
Rec	Feet of	%gas	%oil	%water	%mud
Rec	Feet of	%gas	%oil	%water	%mud
Rec	Feet of	%gas	%oil	%water	%mud
Rec	Feet of	%gas	%oil	%water	%mud

Rec Total 5 BHT 139 Gravity — API RW — @ — ° F Chlorides — ppm

(A) Initial Hydrostatic 2372 Test 1150 T-On Location 24:00 9-30
 (B) First Initial Flow 19 Jars 250 T-Started 03:40 10-1
 (C) First Final Flow 17 Safety Joint 75 T-Open 06:38 10-1
 (D) Initial Shut-In 43 Circ Sub — T-Pulled 09:09 10-1
 (E) Second Initial Flow 15 Hourly Standby — T-Out 10:43 10-1
 (F) Second Final Flow 20 Mileage 176 RT 176 Comments —
 (G) Final Shut-In 40 Sampler —
 (H) Final Hydrostatic 2255 Straddle — Ruined Shale Packer —
 Shale Packer X.2 500 Ruined Packer —
 Extra Packer — Extra Copies —
 Extra Recorder — Sub Total 0
 Day Standby — Total 2151
 Accessibility — MP/DST Disc't —
 Sub Total 2151

Approved By Tim J. Lauer

Our Representative Robert Zuchow

TriLOBITE TESTING INC. shall not be liable for damaged of any kind of the property or personnel of the one for whom a test is made, or for any loss suffered or sustained, directly or indirectly, through the use of its equipment, or its statements or opinion concerning the results of any test, tools lost or damaged in the hole shall be paid for at cost by the party for whom the test is made.



TRILOBITE TESTING INC.

1515 Commerce Parkway • Hays, Kansas 67601

Test Ticket

NO. 62822

Well Name & No. Hilt - Sampler 22-110 Test No. 2 Date 10-2-2015
 Company Coral Production Corp Elevation 3676 KB 3666 GL
 Address 1600 Stout St STE. 1500 Denver CO 80202
 Co. Rep / Geo. Tim Lauer Rig Duke #4
 Location: Sec. 11 Twp. 2S Rge. 42W Co. Cheyenne State KS

Interval Tested 4760 — 4801 Zone Tested LKC "J"
 Anchor Length 41 Drill Pipe Run 4755 Mud Wt. 9.2
 Top Packer Depth 4756 (shale) Drill Collars Run 0 Vis 52
 Bottom Packer Depth 4760 (shale) Wt. Pipe Run 0 WL 9.2
 Total Depth 4801 Chlorides 500 ppm System LCM 3

Blow Description IF - Bob in 5 mins
ISI - Surface blow on return started in 23 mins
FF - Bob in 8 mins
FSI - No return

Rec	Feet of	%gas	%oil	%water	%mud
<u>10</u>	<u>90</u>	<u>5</u>	<u>95</u>		
<u>196</u>	<u>900 w/m</u>	<u>5</u>	<u>10</u>	<u>15</u>	<u>70</u>
<u>682</u>	<u>900 m/w</u>	<u>15</u>	<u>5</u>	<u>50</u>	<u>30</u>
Rec	Feet of	%gas	%oil	%water	%mud
Rec	Feet of	%gas	%oil	%water	%mud

Rec Total 888 BHT 153 Gravity 31 API RW 1740 @ 54 °F Chlorides 14,000 ppm

(A) Initial Hydrostatic 2517 Test 1150 T-On Location 14:00 10-2
 (B) First Initial Flow 70 Jars 250 T-Started 15:15 10-2
 (C) First Final Flow 174 Safety Joint 75 T-Open 18:32 10-2
 (D) Initial Shut-In 1359 Circ Sub _____ T-Pulled 21:34 10-2
 (E) Second Initial Flow 208 Hourly Standby _____ T-Out 01:10 10-3
 (F) Second Final Flow 420 Mileage 176 RT Comments _____
 (G) Final Shut-In 1289 Sampler _____
 (H) Final Hydrostatic 2442 Straddle _____ Ruined Shale Packer _____
 Shale Packer X2 500 Ruined Packer _____
 Extra Packer _____ Extra Copies _____
 Extra Recorder _____ Sub Total 0
 Day Standby _____ Total 2151
 Accessibility _____ MP/DST Disc't _____

Initial Open 15
 Initial Shut-In 30
 Final Flow 45
 Final Shut-In 90

Approved By Tim J. Lauer Our Representative Robert Zichow

TriLOBITE TESTING Inc. shall not be liable for damaged of any kind of the property or personnel of the one for whom a test is made, or for any loss suffered or sustained, directly or indirectly, through the use of its equipment, or its statements or opinion concerning the results of any test, tools lost or damaged in the hole shall be paid for at cost by the party for whom the test is made.



TRILOBITE TESTING INC.

1515 Commerce Parkway • Hays, Kansas 67601

Test Ticket

NO. 62823

Well Name & No. Hilt - Samler 22-110 Test No. 3 Date 10-3-2015
 Company Coral Production Corp Elevation 3676 KB 3666 GL
 Address 1600 Stout St STE 1500 Denver CO 80202
 Co. Rep / Geo. Tim Lauer Rig Duke 4
 Location: Sec. 11 Twp. 25 Rge. 42 W Co. Cheyenne State K5

Interval Tested 4840 - 4893 Zone Tested LKC "K & L"
 Anchor Length ~~6000~~ 53 Drill Pipe Run 4845 Mud Wt. 9.3
 Top Packer Depth 4836 (shale) Drill Collars Run 0 Vis 6.8
 Bottom Packer Depth 4840 (shale) Wt. Pipe Run 0 WL 9.4
 Total Depth 4893 Chlorides 500 ppm System LCM 2.5
 Blow Description IF - Blow built to 1/2"
ISF - No return
FF - NO blow
FSI - No return

Rec	Feet of	%gas	%oil	%water	%mud
<u>5</u>	<u>mud</u>			<u>100</u>	
Rec	Feet of	%gas	%oil	%water	%mud
Rec	Feet of	%gas	%oil	%water	%mud
Rec	Feet of	%gas	%oil	%water	%mud
Rec	Feet of	%gas	%oil	%water	%mud

Rec Total 5 BHT 136 Gravity — API RW — @ — ° F Chlorides — ppm

(A) Initial Hydrostatic <u>2573</u>	<input checked="" type="checkbox"/> Test <u>1150</u>	T-On Location <u>16:00 10-3</u>
(B) First Initial Flow <u>18</u>	<input checked="" type="checkbox"/> Jars <u>250</u>	T-Started <u>17:00 10-3</u>
(C) First Final Flow <u>27</u>	<input checked="" type="checkbox"/> Safety Joint <u>75</u>	T-Open <u>19:16 10-3</u>
(D) Initial Shut-In <u>34</u>	<input type="checkbox"/> Circ Sub	T-Pulled <u>21:46 10-3</u>
(E) Second Initial Flow <u>33</u>	<input type="checkbox"/> Hourly Standby	T-Out <u>00:04 10-4</u>
(F) Second Final Flow <u>32</u>	<input checked="" type="checkbox"/> Mileage <u>176 RT x 2</u>	Comments <u>Drove out loaded</u>
(G) Final Shut-In <u>37</u>	<input type="checkbox"/> Sampler	<u>tool at 09:00 on</u>
(H) Final Hydrostatic <u>2425</u>	<input type="checkbox"/> Straddle	<u>10-7-2015</u>
	<input checked="" type="checkbox"/> Shale Packer <u>x 2</u> 500	<input type="checkbox"/> Ruined Shale Packer
Initial Open <u>30</u>	<input type="checkbox"/> Extra Packer	<input type="checkbox"/> Ruined Packer
Initial Shut-In <u>30</u>	<input type="checkbox"/> Extra Recorder	<input type="checkbox"/> Extra Copies
Final Flow <u>30</u>	<input checked="" type="checkbox"/> Day Standby <u>2.5d 20.5h</u>	Sub Total <u>2400</u>
Final Shut-In <u>60</u>	<input type="checkbox"/> Accessibility	Total <u>2327</u>
	Sub Total <u>2327</u>	MP/DST Disc't

Approved By Tim J. Lauer Our Representative Robert Zickow
 Trilobite Testing Inc. shall not be liable for damaged of any kind of the property or personnel of the one for whom a test is made, or for any loss suffered or sustained, directly or indirectly, through the use of its equipment, or its statements or opinion concerning the results of any test, tools lost or damaged in the hole shall be paid for at cost by the party for whom the test is made.