

GEOLOGIST'S REPORT		ELEVATIONS	
DRILLING TIME AND SAMPLE LOG		KB 3675'	
COMPANY	Coral Production Corporation	DF	
LEASE	#22-11D Hill-Samler	GL 3666'	
FIELD	Wildcat	Measurements Are All From Kelly Bushing	
LOCATION	2080' FNL, 1540' FWL, NW/4	CASING	
SEC	11	CONTRACTOR	Duke Drilling Rig #4
COUNTY	Cheyenne STATE Kansas	SPUD	9-25-2015
		COMPLD	10-7-2015
		RTD	5642'
		MUD UP	3500'
		RTD TYPE MUD	Chemical
SAMPLES SAVED	FROM 3900' TO RTD	CONDUCTOR	
DRILLING TIME KEPT FROM	3900' TO RTD	SURFACE	8-5/8" @ 286'
SAMPLES EXAMINED FROM	3900' TO RTD	PRODUCTION	none
GEOLOGICAL SUPERVISION FROM	3900' TO RTD	ELECTRICAL SURVEYS	
GEOLOGIST ON WELL	Tim J. Lauer	Nabors Stack - DCR, DL, ML, PE, Sonic - Engr. Jason Cappellucci	
FORMATION TOPS	ELECTRIC LOG	SAMPLE LOG	
Anhydrite	3620 (+55)	3620 (+55)	
Topeka	4390 (-175)	4389 (-174)	
Lansing	4574 (-89)	4572 (-897)	
Stark	4817 (-1142)	4816 (-1141)	
Marmaton	4979 (-1302)	4973 (-1298)	
Cherokee Shale	5087 (-1410)	5083 (-1408)	
Mississippian	5420 (-1745)	5420 (-1745)	
Arbuckle	5520 (-1845)	5517 (-1842)	
Reagan Sand	5631 (-1956)	5628 (-1953)	
Total Depth	5644 (-1966)	5642 (-1967)	

REMARKS Due to drill stem test results, and/or evaluation, operator elected to plug and abandon the location without further testing the location.

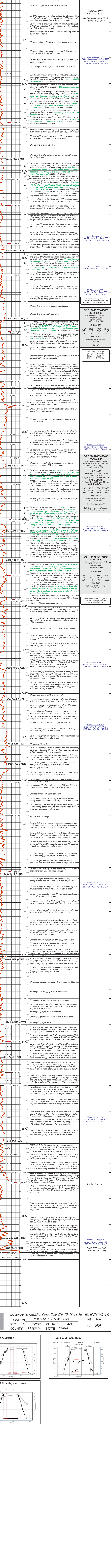
Note: DST measurements are running 2-4 ft low to Rotary measurements.

Move: Flow measurements downhole 2' to Rotary depths.

Respectfully submitted,

Tim J. Lauer
Tim J. Lauer
10/9/2015

LEGEND	
Anhydrite	Drilling Time in Minutes Per Foot
Sandstone	Rate of Penetration Decreases
Limestone	
Shale	
Carb Sh	
Cherty LS	
Chert	
Dolomite	



COMPANY & WELL	Coral Prod Corp #22-11D Hill-Samler	ELEVATIONS	KB 3675'
LOCATION	2080' FNL, 1540' FWL, NW/4	GL	3666'
SEC.	11	TWSP	2S
COUNTY	Cheyenne STATE Kansas	RGE	42W

