

**DIAMOND TESTING, LLC**  
P.O. Box 157  
**HOISINGTON, KANSAS 67544**  
(620) 653-7550 • (800) 542-7313  
BarnhillA34Dst1

Company Vess Oil Corporation Lease & Well No. Barnhill "A" No. 34  
Elevation 1385 KB Formation Arbuckle Effective Pay \_\_\_\_\_ Ft. Ticket No. RR200  
Date 10-6-15 Sec. 6 Twp. 26S Range 5E County Butler State Kansas  
Test Approved By Roger L. Martin Diamond Representative Ricky Ray

Formation Test No. 1 Interval Tested from 2,397 ft. to 2,460 ft. Total Depth 2,460 ft.  
Packer Depth 2,392 ft. Size 6 3/4 in. Packer Depth \_\_\_\_\_ ft. Size \_\_\_\_\_ in.  
Packer Depth 2,397 ft. Size 6 3/4 in. Packer Depth \_\_\_\_\_ ft. Size \_\_\_\_\_ in.  
Depth of Selective Zone Set \_\_\_\_\_ ft.

Top Recorder Depth (Inside) 2,385 ft. Recorder Number 0062 Cap. 5,000 psi.  
Bottom Recorder Depth (Outside) 2,437 ft. Recorder Number 5954 Cap. 5,000 psi.  
Below Straddle Recorder Depth \_\_\_\_\_ ft. Recorder Number \_\_\_\_\_ Cap. \_\_\_\_\_ psi.

Drilling Contractor C & G Drilling Company - Rig 1 Drill Collar Length 178 ft I.D. 2 1/4 in.  
Mud Type Chemical Viscosity 52 Weight Pipe Length \_\_\_\_\_ ft I.D. \_\_\_\_\_ in.  
Weight 9.3 Water Loss 7.8 cc. Drill Pipe Length 2,187 ft I.D. 3 in.  
Chlorides 1,000 P.P.M. Test Tool Length 32 ft Tool Size 3 1/2-IF in.  
Jars: Make Sterling Serial Number 12 Anchor Length 32' perf. w/31' drill pipe Size 4 1/2-FH in.  
Did Well Flow? No Reversed Out No Surface Choke Size 1 in. Bottom Choke Size 5/8 in.  
Main Hole Size 7 7/8 in. Tool Joint Size 4-FH in.

Blow: 1st Open: Weak, surface blow increasing to 3/4 in. in 30 mins. No blow back during shut-in.  
2nd Open: No blow. No blow back during shut-in.

Recovered 1 ft. of oil = .004920 bbls. (Grind out: 100%-oil)  
Recovered 23 ft. of slightly oil specked mud = .113160 bbls. (Grind out: 1%-oil; 99%-mud)  
Recovered 24 ft. of TOTAL FLUID = .118080 bbls.  
Recovered \_\_\_\_\_ ft. of \_\_\_\_\_  
Recovered \_\_\_\_\_ ft. of \_\_\_\_\_  
Recovered \_\_\_\_\_ ft. of \_\_\_\_\_  
Remarks Tool Sample Grind Out: 2%-oil; 98%-mud

Time Set Packer(s) 2:04 P.M. Time Started off Bottom 5:04 P.M. Maximum Temperature 102°  
Initial Hydrostatic Pressure.....(A) 1145 P.S.I.  
Initial Flow Period.....Minutes 30 (B) 12 P.S.I. to (C) 17 P.S.I.  
Initial Closed In Period.....Minutes 45 (D) 762 P.S.I.  
Final Flow Period.....Minutes 45 (E) 18 P.S.I. to (F) 22 P.S.I.  
Final Closed In Period.....Minutes 60 (G) 718 P.S.I.  
Final Hydrostatic Pressure.....(H) 1111 P.S.I.

# Diamond Testing LLC

P.O. Box 157

Hoisington KS 67544

Ricky Ray - Tester  
(620) 617-7261



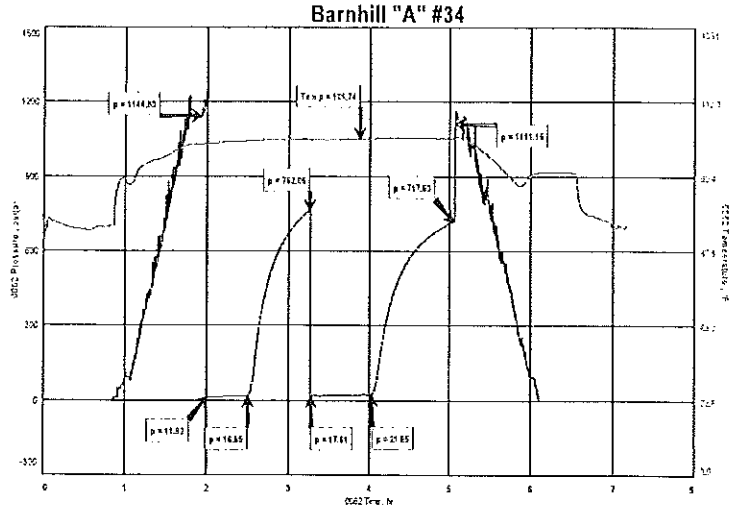
## Wellsite Report

### General Information

Company Name	Vess Oil Corporation
Contact	Casey Coats
Well Operator	Vess Oil Corporation
Well Name	Barnhill "A" #34
Surface Location	Sec: 6-26S-5E (Butler County)
Field	El Dorado
Well Type	Vertical
Pool	Infield
Test Purpose (AEUB)	Initial Test
Qualified By	Roger Martin
Gauge Name	0062

### Test Information

Job Number	RR200
Test Type	Drill Stem Test
Well Fluid Type	01 Oil
Formation	Dst 1 Arbuckle (2397-2460)
Start Test Date	2015/10/06
Start Test Time	12:06:00
Final Test Date	2015/10/06
Final Test Time	10:13:00



### Test Results

Recovery:

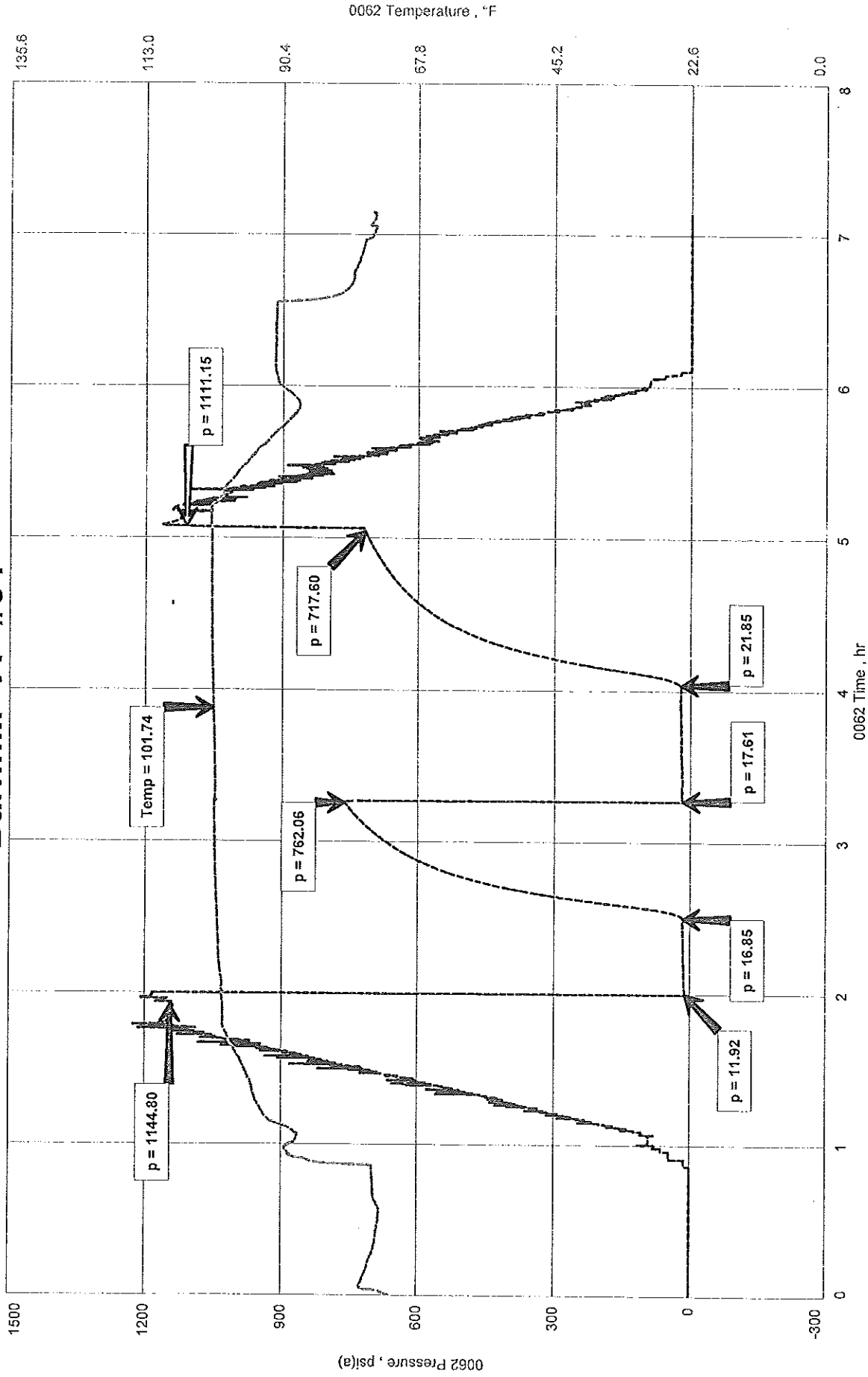
1'	O	100% O	
23'	SLOSM	1% O	99% M
24'	Total Fluid		

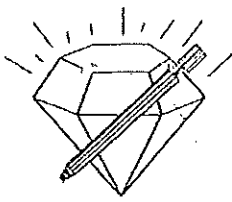
Tool Sample: 2% O 98% M

Vess Oil Corporation  
Dst 1 Arbuckle (2397-2460)  
Start Test Date: 2015/10/06  
Final Test Date: 2015/10/06

Barnhill "A" #34  
Formation: Dst 1 Arbuckle (2397-2460)  
Pool: Infield  
Job Number: RR200

# Barnhill "A" #34





**DIAMOND TESTING, LLC**  
P.O. Box 157  
**HOISINGTON, KANSAS 67544**  
(620) 653-7550 • (800) 542-7313  
BarnhillA34Dst2

Company Vess Oil Corporation Lease & Well No. Barnhill "A" No. 34  
Elevation 1385 KB Formation Arbuckle Effective Pay \_\_\_\_\_ Ft. Ticket No. RR201  
Date 10-7-15 Sec. 6 Twp. 26S Range 5E County Butler State Kansas  
Test Approved By Roger L. Martin Diamond Representative Ricky Ray

Formation Test No. 2 Interval Tested from 2,443 ft. to 2,470 ft. Total Depth 2,470 ft.  
Packer Depth 2,438 ft. Size 6 3/4 in. Packer Depth \_\_\_\_\_ ft. Size \_\_\_\_\_ in.  
Packer Depth 2,443 ft. Size 6 3/4 in. Packer Depth \_\_\_\_\_ ft. Size \_\_\_\_\_ in.  
Depth of Selective Zone Set \_\_\_\_\_ ft.

Top Recorder Depth (Inside) 2,431 ft. Recorder Number 0062 Cap. 5,000 psi.  
Bottom Recorder Depth (Outside) 2,444 ft. Recorder Number 5954 Cap. 5,000 psi.  
Below Straddle Recorder Depth \_\_\_\_\_ ft. Recorder Number \_\_\_\_\_ Cap. \_\_\_\_\_ psi.

Drilling Contractor C & G Drilling Company - Rig 1 Drill Collar Length 178 ft I.D. 2 1/4 in.  
Mud Type Chemical Viscosity 52 Weight Pipe Length \_\_\_\_\_ ft I.D. \_\_\_\_\_ in.  
Weight 9.3 Water Loss 7.6 cc. Drill Pipe Length 2,233 ft I.D. 3 in.  
Chlorides 1,000 P.P.M. Test Tool Length 32 ft Tool Size 3 1/2-IF in.  
Jars: Make Sterling Serial Number 12 Anchor Length 27 ft. Size 4 1/2-FH in.  
Did Well Flow? No Reversed Out No Surface Choke Size 1 in. Bottom Choke Size 5/8 in.  
Main Hole Size 7 7/8 in. Tool Joint Size 4-FH in.

3low: 1st Open: Weak, surface blow increasing to 4 1/2 ins. in 30 mins. No blow back during shut-in.

2nd Open: Weak, surface blow increasing to 4 1/4 ins. in 45 mins. No blow back during shut-in.

Recovered 1 ft. of oil = .004920 bbls. (Grind out: 100%-oil)  
Recovered 85 ft. of oil specked mud = .418200 bbls. (Grind out: 3%-oil; 97%-mud)  
Recovered 60 ft. of slightly oil cut, water cut, mud = .295200 bbls. (Grind out: 5%-oil; 20%-water; 75%-mud)  
Recovered 146 ft. of TOTAL FLUID = .718320 bbls. Chlorides: 30,000 Ppm PH: 7.0 RW: .29 @ 51°  
Recovered \_\_\_\_\_ ft. of \_\_\_\_\_  
Recovered \_\_\_\_\_ ft. of \_\_\_\_\_

Remarks Tool Sample Grind Out: 4%-oil; 2%-water; 94%-mud

Time Set Packer(s) 3:23 A.M. Time Started off Bottom 6:23 A.M. Maximum Temperature 101°  
Initial Hydrostatic Pressure.....(A) 1155 P.S.I.  
Initial Flow Period.....Minutes 30 (B) 9 P.S.I. to (C) 40 P.S.I.  
Initial Closed In Period.....Minutes 45 (D) 938 P.S.I.  
Initial Flow Period.....Minutes 45 (E) 41 P.S.I. to (F) 76 P.S.I.  
Initial Closed In Period.....Minutes 60 (G) 935 P.S.I.  
Initial Hydrostatic Pressure.....(H) 1161 P.S.I.

# Diamond Testing LLC

P.O. Box 157

Hoisington KS 67544

Ricky Ray - Tester

(620) 617-7261

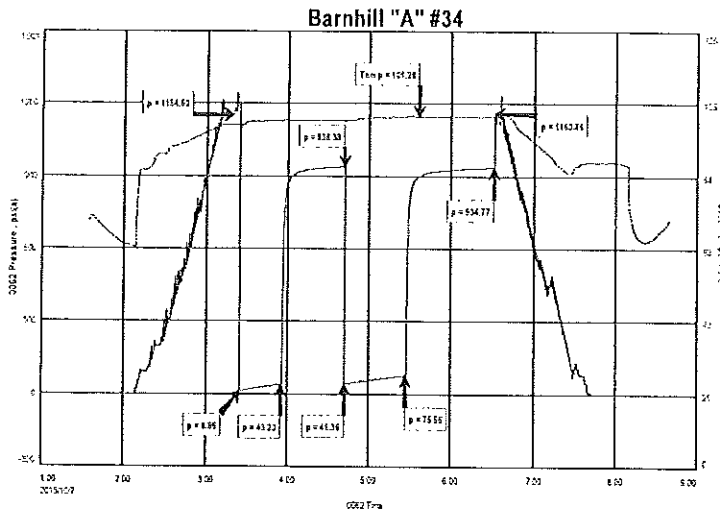
## Wellsite Report

### General Information

Company Name	Vess Oil Corporation
Contact	Casey Coats
Well Operator	Vess Oil Corporation
Well Name	Barnhill "A" #34
Surface Location	Sec: 6-26S-5E (Butler County)
Field	El Dorado
Well Type	Vertical
Pool	Infield
Test Purpose (AEUB)	Initial Test
Qualified By	Roger Martin
Gauge Name	0062

### Test Information

Job Number	RR201
Test Type	Drill Stem Test
Well Fluid Type	01 Oil
Formation	Dst 2 Arbuckle (2443-2470)
Start Test Date	2015/10/07
Start Test Time	01:35:00
Final Test Date	2015/10/07
Final Test Time	08:38:00



### Test Results

Recovery:

1'	O	100%	O		
85'	OSM	3% O		97% M	
60'	SLOCWCM	5% O		20% W	75% M
146'	Total Fluid				

Tool Sample: 4% O 2% W 94% M

Chlorides: 30,000 PPM

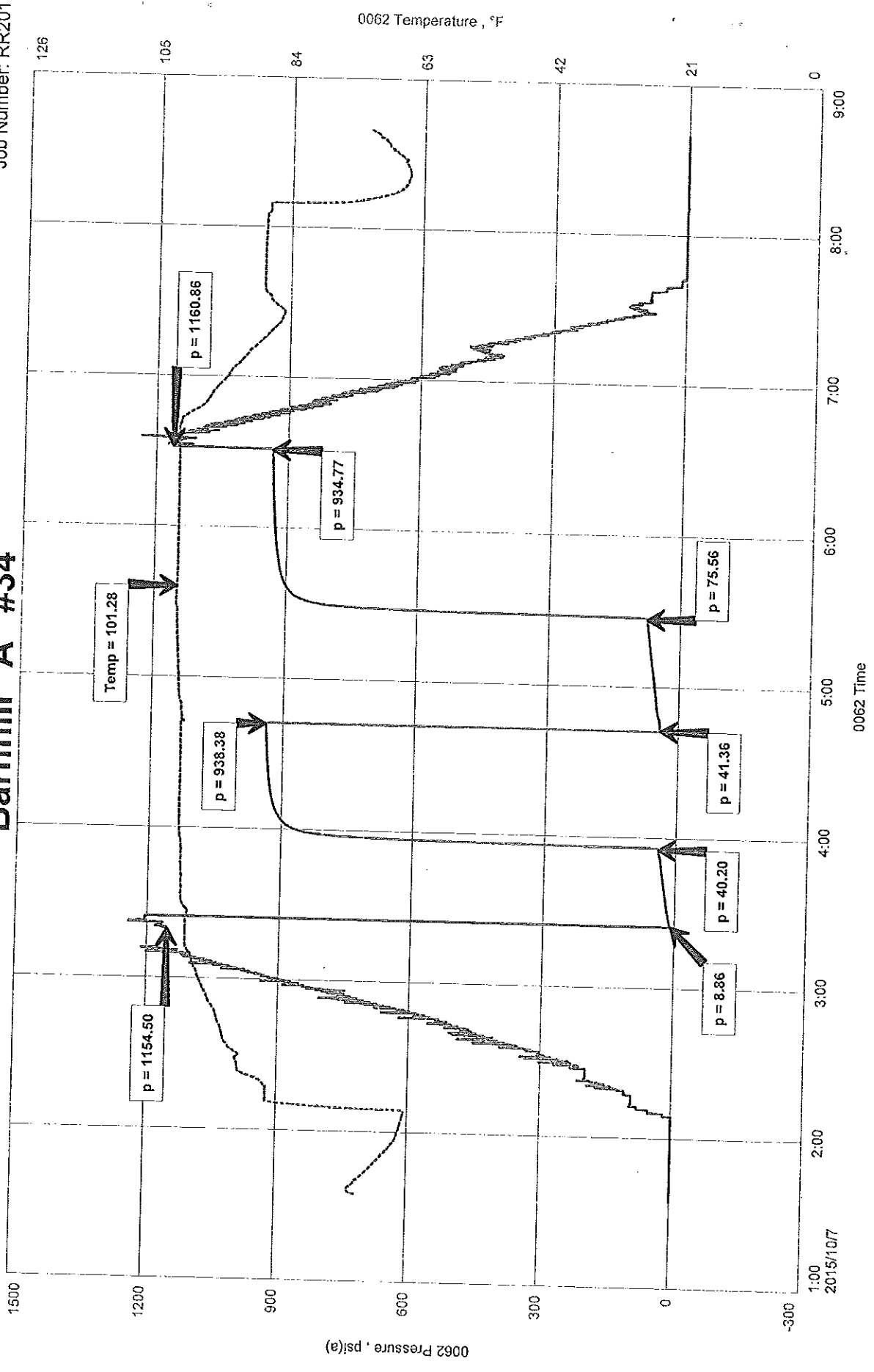
PH: 7

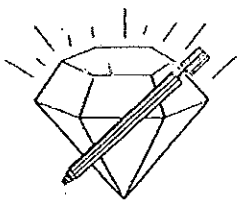
RW: .29 @ 51 Deg

Vess Oil Corporation  
Dst 2 Arbuckle (2443-2470)  
Start Test Date: 2015/10/07  
Final Test Date: 2015/10/07

Barnhill "A" #34  
Formation: Dst 2 Arbuckle (2443-2470)  
Pool: Infield  
Job Number: RR201

# Barnhill "A" #34





**DIAMOND TESTING, LLC**  
P.O. Box 157  
**HOISINGTON, KANSAS 67544**  
(620) 653-7550 • (800) 542-7313  
BarnhillA34Dst3

Company Vess Oil Corporation Lease & Well No. Barnhill "A" No. 34  
Elevation 1385 KB Formation Arbuckle Effective Pay \_\_\_\_\_ Ft. Ticket No. RR202  
Date 10-7-15 Sec. 6 Twp. 26S Range 5E County Butler State Kansas  
Test Approved By Roger L. Martin Diamond Representative Ricky Ray

Formation Test No. 3 Interval Tested from 2,470 ft. to 2,480 ft. Total Depth 2,480 ft.  
Packer Depth 2,465 ft. Size 6 3/4 in. Packer Depth \_\_\_\_\_ ft. Size \_\_\_\_\_ in.  
Packer Depth 2,470 ft. Size 6 3/4 in. Packer Depth \_\_\_\_\_ ft. Size \_\_\_\_\_ in.  
Depth of Selective Zone Set \_\_\_\_\_ ft.

Top Recorder Depth (Inside) 2,458 ft. Recorder Number 0062 Cap. 5,000 psi.  
Bottom Recorder Depth (Outside) 2,472 ft. Recorder Number 5954 Cap. 5,000 psi.  
Below Straddle Recorder Depth \_\_\_\_\_ ft. Recorder Number \_\_\_\_\_ Cap. \_\_\_\_\_ psi.

Drilling Contractor C & G Drilling Company - Rig 1 Drill Collar Length 178 ft I.D. 2 1/4 in.  
Mud Type Chemical Viscosity 56 Weight Pipe Length \_\_\_\_\_ ft I.D. \_\_\_\_\_ in.  
Weight 9.3 Water Loss 7.4 cc. Drill Pipe Length 2,260 ft I.D. 3 in.  
Chlorides 1,200 P.P.M. Test Tool Length 32 ft Tool Size 3 1/2-IF in.  
Jars: Make Sterling Serial Number 12 Anchor Length 10 ft. Size 4 1/2-FH in.  
Did Well Flow? No Reversed Out No Surface Choke Size 1 in. Bottom Choke Size 5/8 in.  
Main Hole Size 7 7/8 in. Tool Joint Size 4-FH in.

Blow: 1st Open: Weak, surface blow increasing to 7 1/2 ins. in 30 mins. No blow back during shut-in.

2nd Open: Weak, surface blow increasing to 9 ins. in 45 mins. No blow back during shut-in.

Recovered 30 ft. of very slightly oil specked, muddy water = .325200 bbls. (Grind out: 65%-water; 35%-mud)  
Recovered 178 ft. of slightly oil specked, muddy water = .875760 bbls. (Grind out: 1%-oil; 58%-water; 41%-mud)  
Recovered 208 ft. of TOTAL FLUID = 1.200960 bbls.  
Recovered \_\_\_\_\_ ft. of \_\_\_\_\_  
Recovered \_\_\_\_\_ ft. of \_\_\_\_\_  
Recovered \_\_\_\_\_ ft. of \_\_\_\_\_

Remarks Tool Sample Grind Out: 1%-oil; 94%-water; 5%-mud (Chlorides: 24,000 Ppm PH: 7.0 RW: .39 @ 60°)

Time Set Packer(s) 5:37 P.M. Time Started off Bottom 8:37 P.M. Maximum Temperature 103°  
Initial Hydrostatic Pressure.....(A) 1177 P.S.I.  
Initial Flow Period.....Minutes 30 (B) 11 P.S.I. to (C) 55 P.S.I.  
Initial Closed In Period.....Minutes 45 (D) 957 P.S.I.  
Final Flow Period.....Minutes 45 (E) 57 P.S.I. to (F) 105 P.S.I.  
Final Closed In Period.....Minutes 60 (G) 957 P.S.I.  
Final Hydrostatic Pressure.....(H) 1133 P.S.I.

# Diamond Testing LLC

P.O. Box 157

Hoisington KS 67544

Ricky Ray - Tester  
(620) 617-7261



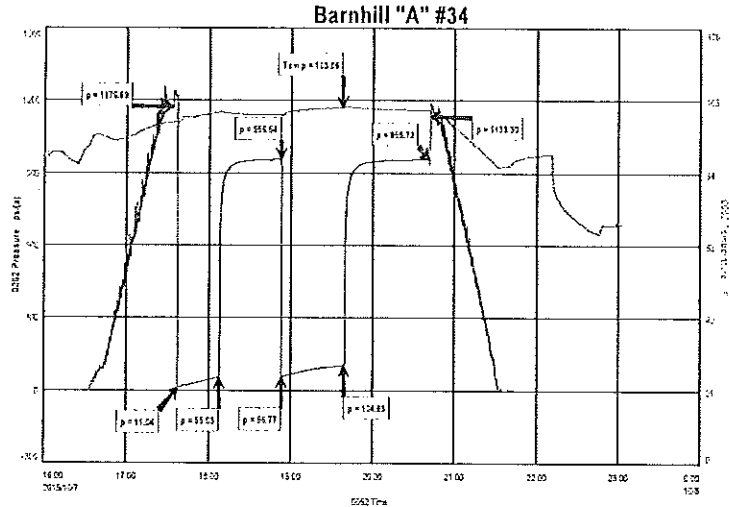
## Wellsite Report

### General Information

Company Name	Vess Oil Corporation
Contact	Casey Coats
Well Operator	Vess Oil Corporation
Well Name	Barnhill "A" #34
Surface Location	Sec: 6-26S-5E (Butler County)
Field	EI Dorado
Well Type	Vertical
Pool	Infield
Test Purpose (AEUB)	Initial Test
Qualified By	Roger Martin
Gauge Name	0062

### Test Information

Job Number	RR202
Test Type	Drill Stem Test
Well Fluid Type	01 Oil
Formation	Dst 3 Arbuckle (2470-2480)
Start Test Date	2015/10/07
Start Test Time	16:02:00
Final Test Date	2015/10/07
Final Test Time	23:03:00



### Test Results

#### Recovery:

30'	VSLOSMW	65% W	35% M	
178'	SLOSMW	1% O	58% W	41% M
208'	Total Fluid			

Tool Sample: 1% O 94% W 5% M

Chlorides: 24,000 PPM

PH: 7

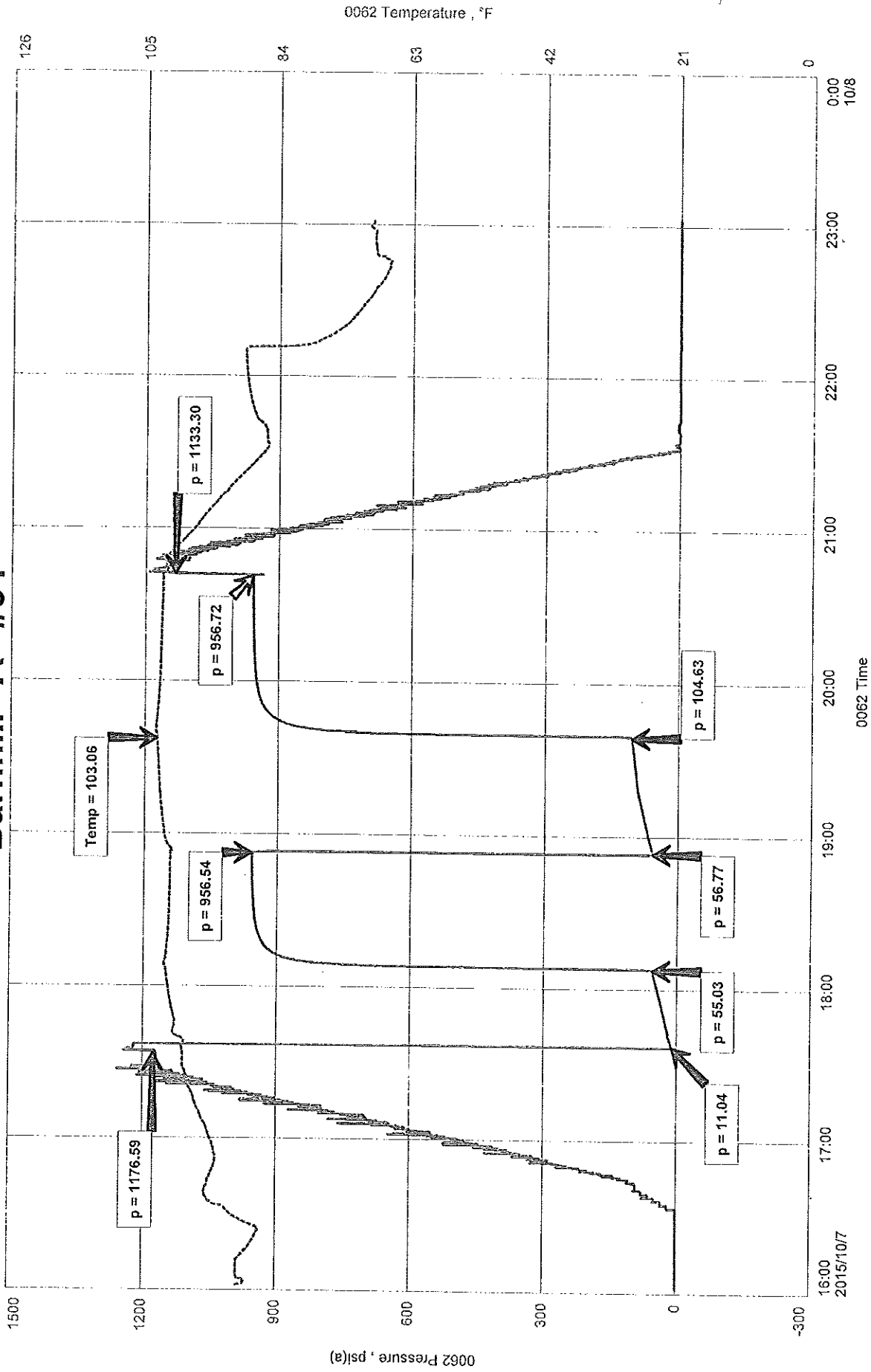
RW: .39 @ 60 Deg



Vess Oil Corporation  
Dst 3 Arbuckle (2470-2480)  
Start Test Date: 2015/10/07  
Final Test Date: 2015/10/07

Barnhill "A" #34  
Formation: Dst 3 Arbuckle (2470-2480)  
Pool: Infield  
Job Number: RR202

# Barnhill "A" #34



0062 Pressure, psia

0062 Temperature, °F

0062 Time