

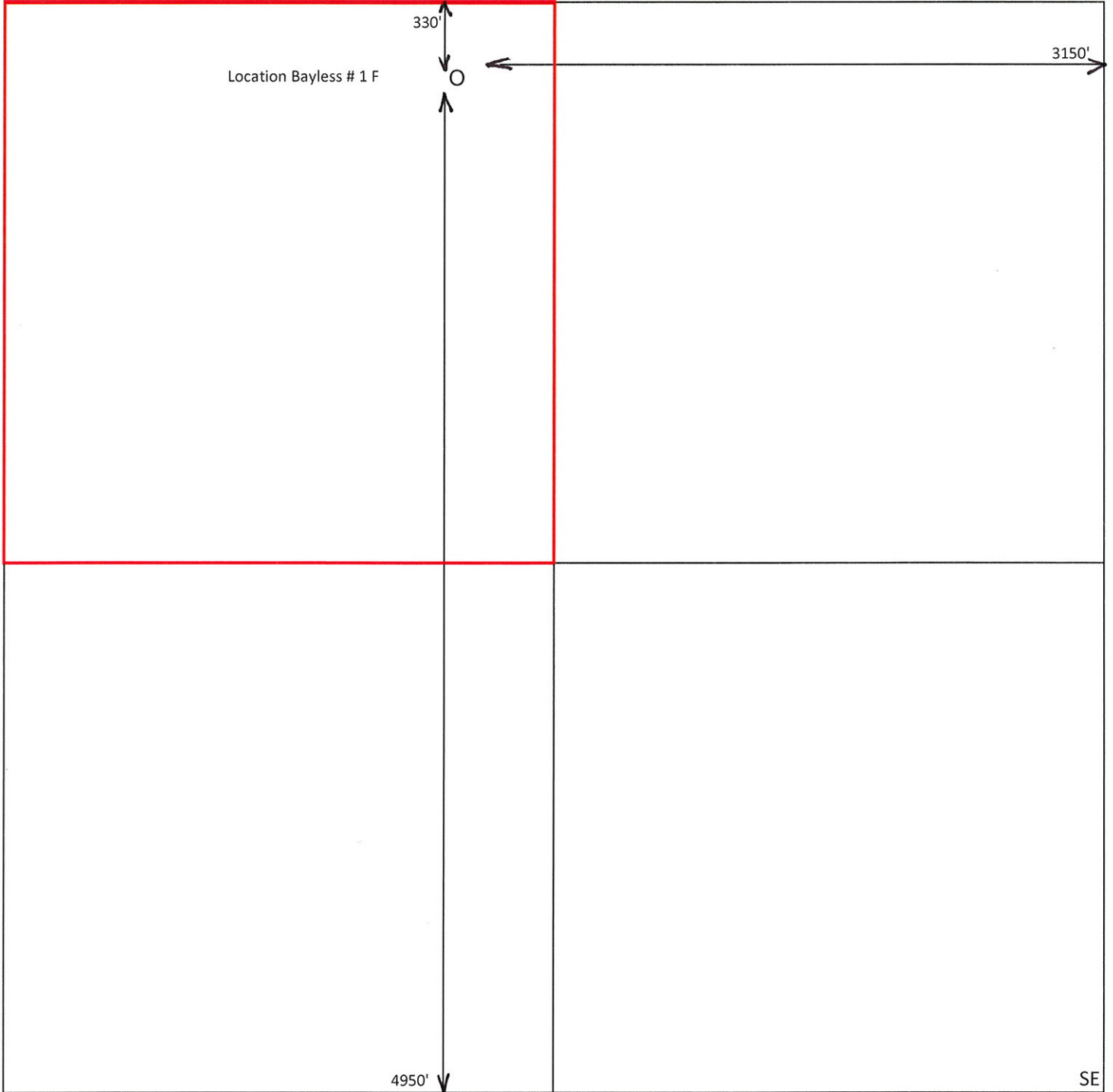
BAYLESS LEASE

160 ACRES

MONTGOMERY CO., KS

NW1/4 T34S R13E S12

NW



| Spot Information | |
|------------------|--------------------------|
| Latitude | 37.109852 |
| Longitude | -95.939173 |
| Section | Sec-12 Twp-34 S Rng-13 E |
| Quarter Calls | W2 NE NE NW |
| County | Montgomery |
| KCC District | 3 |
| SGA | Yes(TBL3) |
| Hutch Salt | No |
| Elevation | 795 ft |

Water Well Information
NO WWC5 records with in 1 mile of this location

KGS Map Viewer - Oil and Gas Wells and Fields

[Section 12-34S-13E](#) (Opens in separate window)

| Available Fields | Quarter Calls |
|--------------------------|---------------|
| CHEROKEE BASIN COAL AREA | ALL |
| WAYSIDE-HAVANA | ALL |

