



TEMPORARY ABANDONMENT WELL APPLICATION

All blanks must be complete

OPERATOR: License# _____
Name: _____
Address 1: _____
Address 2: _____
City: _____ State: _____ Zip: _____ + _____
Contact Person: _____
Phone: (_____) _____
Contact Person Email: _____
Field Contact Person: _____
Field Contact Person Phone: (_____) _____

API No. 15- _____
Spot Description: _____
____ - ____ - ____ - ____ Sec. _____ Twp. _____ S. R. _____ E W
_____ feet from N / S Line of Section
_____ feet from E / W Line of Section
GPS Location: Lat: _____, Long: _____
(e.g. xx.xxxxx) (e.g. -xxx.xxxxx)
Datum: NAD27 NAD83 WGS84
County: _____ Elevation: _____ GL KB
Lease Name: _____ Well #: _____
Well Type: (check one) Oil Gas OG WSW Other: _____
 SWD Permit #: _____ ENHR Permit #: _____
 Gas Storage Permit #: _____
Spud Date: _____ Date Shut-In: _____

	Conductor	Surface	Production	Intermediate	Liner	Tubing
Size						
Setting Depth						
Amount of Cement						
Top of Cement						
Bottom of Cement						

Casing Fluid Level from Surface: _____ How Determined? _____ Date: _____
Casing Squeeze(s): _____ to _____ w / _____ sacks of cement, _____ to _____ w / _____ sacks of cement. Date: _____
(top) (bottom) (top) (bottom)
Do you have a valid Oil & Gas Lease? Yes No
Depth and Type: Junk in Hole at _____ Tools in Hole at _____ Casing Leaks: Yes No Depth of casing leak(s): _____
(depth) (depth)
Type Completion: ALT. I ALT. II Depth of: DV Tool: _____ w / _____ sacks of cement Port Collar: _____ w / _____ sack of cement
(depth) (depth)
Packer Type: _____ Size: _____ Inch Set at: _____ Feet
Total Depth: _____ Plug Back Depth: _____ Plug Back Method: _____

Geological Data:

Formation Name	Formation Top	Formation Base	Completion Information
1. _____	At: _____	to _____ Feet	Perforation Interval _____ to _____ Feet or Open Hole Interval _____ to _____ Feet
2. _____	At: _____	to _____ Feet	Perforation Interval _____ to _____ Feet or Open Hole Interval _____ to _____ Feet

UNDER PENALTY OF PERJURY I HEREBY ATTEST THAT THE INFORMATION CONTAINED HEREIN IS TRUE AND CORRECT TO THE BEST OF MY KNOWLEDGE

Submitted Electronically

Do NOT Write in This Space - KCC USE ONLY

Date Tested: _____ Results: _____ Date Plugged: _____ Date Repaired: _____ Date Put Back in Service: _____

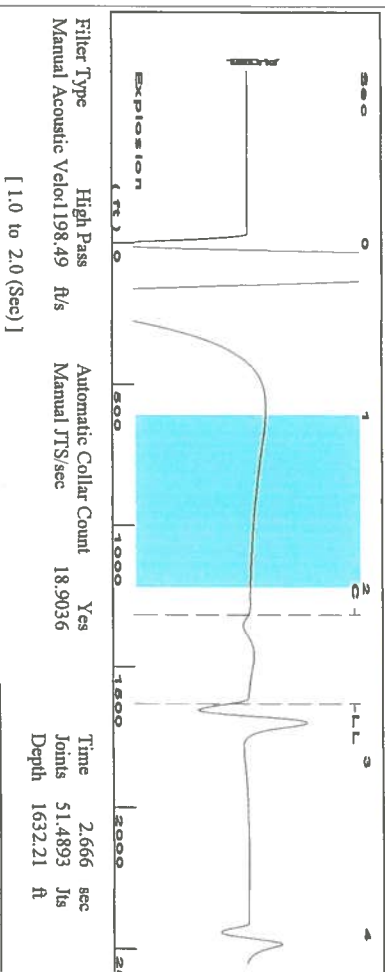
Review Completed by: _____ Comments: _____

TA Approved: Yes Denied Date: _____

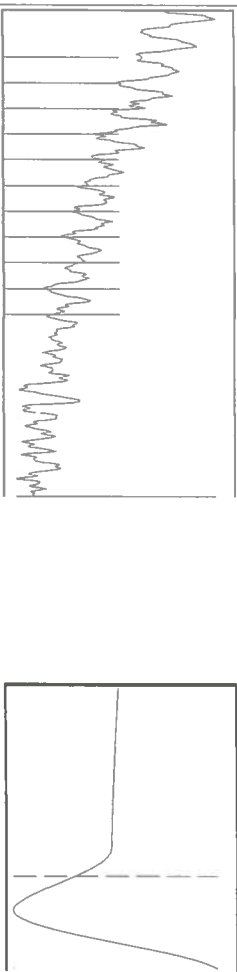
Mail to the Appropriate KCC Conservation Office:

	KCC District Office #1 - 210 E. Frontview, Suite A, Dodge City, KS 67801	Phone 620.225.8888
	KCC District Office #2 / UPGS - 3450 N. Rock Road, Building 600, Suite 601, Wichita, KS 67226	Phone 316.630.4000
	KCC District Office #3 - 1500 SW Seventh Steet, Chanute, KS 66720	Phone 620.432.2300
	KCC District Office #4 - 2301 E. 13th Street, Hays, KS 67601-2651	Phone 785.625.0550

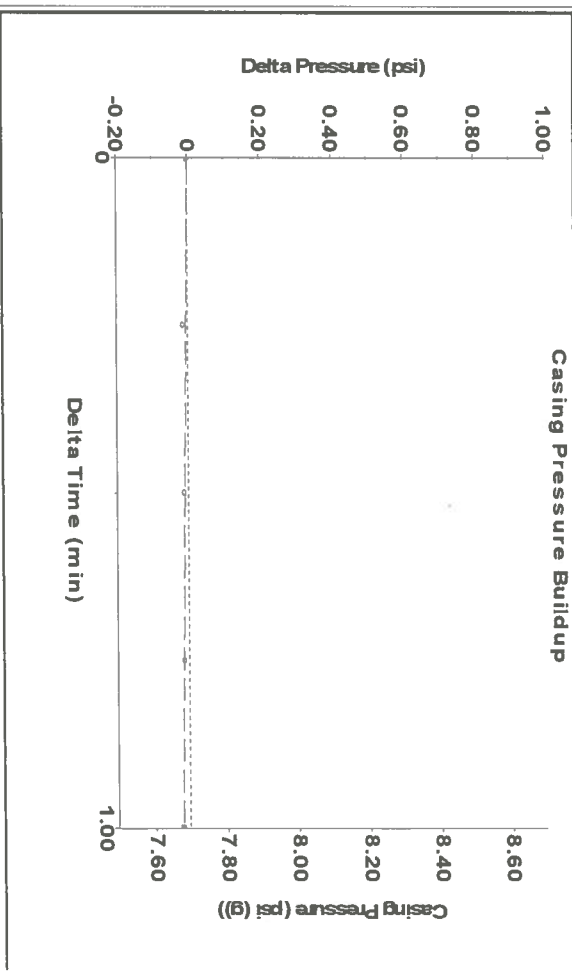
Group: Oxy Usa Ulysses Wells Well: Jones C-3 (acquired on: 11/15/15 13:10:50)



Filter Type High Pass Automatic Collar Count Yes
 Manual Acoustic Vel: 1198.49 ft/s Manual JTS: sec 18.9036
 Time 2.666 sec
 Joints 51.4893 Jts
 Depth 1632.21 ft

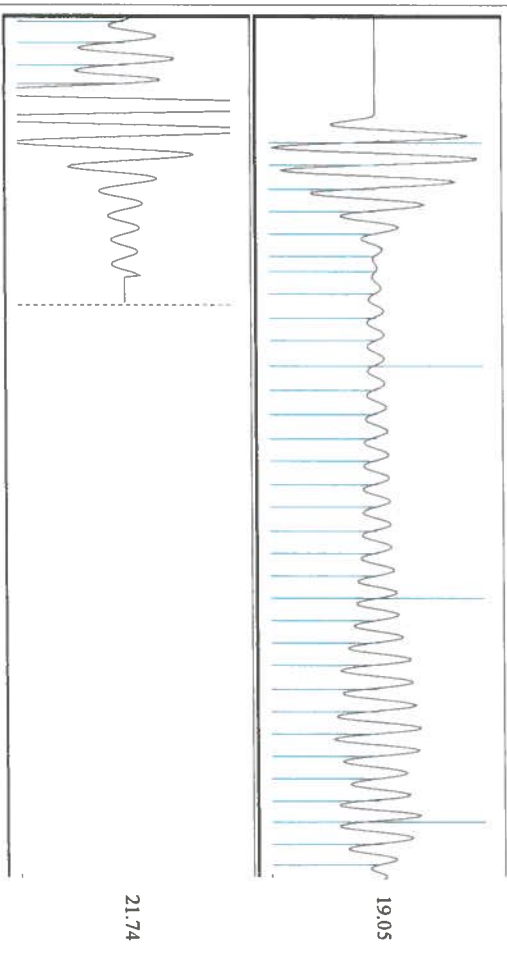


Group: Oxy Usa Ulysses Wells Well: Jones C-3 (acquired on: 11/15/15 13:10:50)



Change in Pressure -0.02 psi PT8197
 Change in Time 1.00 min Range 0 - ? psi

Group: Oxy Usa Ulysses Wells Well: Jones C-3 (acquired on: 11/15/15 13:10:50)

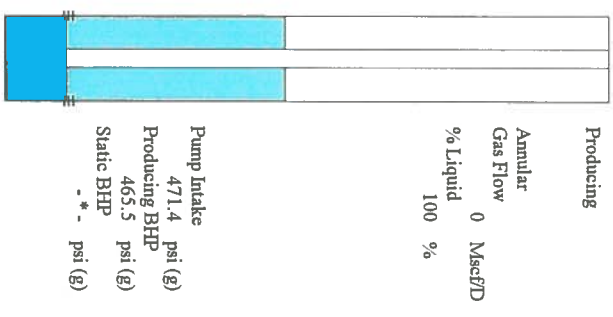


Acoustic Velocity 1224.46 ft/s Joints counted 36
 Joints Per Second 19.3133 Jts/sec Joints to liquid level 51.4893
 Depth to liquid level 1632.21 ft Filter Width 16.9036
 Automatic Collar Count Yes Time to 1st Collar 0.288 2.152

21.74

Group: Oxy Usa Ulysses Wells Well: Jones C-3 (acquired on: 11/15/15 13:10:50)

Production	Potential	Casing Pressure	Producing
Oil Current	Oil - * -	7.7 psi (g)	Annular
Water - * -	Water - * -	Casing Pressure Buildup	Gas Flow
Gas - * -	Gas - * -	-0.019 psi	0 Mscf/D
PRR Method	PRR Method	1.00 min	% Liquid
PBH/PSBH	PBH/PSBH	Gas/Liquid Interface Pressure	100 %
Production Efficiency	Production Efficiency	8.7 psi (g)	
Oil 40 deg API	Oil 40 deg API	Liquid Level Depth	
Water 1.05 Sp.Gr.H2O	Water 1.05 Sp.Gr.H2O	1632.21 ft	
Gas 0.72 Sp.Gr.AIR	Gas 0.72 Sp.Gr.AIR		
Acoustic Velocity	Acoustic Velocity	Pump Intake Depth	
		2991.00 ft	
		Formation Depth	
		2973.00 ft	



Pump Intake 471.4 psi (g)
 Producing BHP 465.5 psi (g)
 Static BHP - * - psi (g)

Saul Hernandez-Teach

Conservation Division
District Office No. 1
210 E. Frontview, Suite A
Dodge City, KS 67801



Phone: 620-225-8888
Fax: 620-225-8885
<http://kcc.ks.gov/>

Shari Feist Albrecht, Chair
Jay Scott Emler, Commissioner
Pat Apple, Commissioner

Sam Brownback, Governor

November 17, 2015

Katherine McClurkan
Merit Energy Company, LLC
13727 Noel Road, Suite 1200
Dallas, TX 75240

Re: Temporary Abandonment
API 15-081-21449-00-00
Jones C 3
NW/4 Sec.03-28S-34W
Haskell County, Kansas

Dear Katherine McClurkan:

"Your temporary abandonment (TA) application for the well listed above has been approved. In accordance with K.A.R. 82-3-111 the TA status of this well will expire 11/17/2016.

- * If you return this well to service or plug it, please notify the District Office.
- * If you sell this well you are required to file a Transfer of Operator form, T-1.
- * If the well will remain temporarily abandoned, you must submit a new TA application, CP-111, before 11/17/2016.

You may contact me at the number above if you have questions.

Very truly yours,

Michael Maier"