

**KIM B. SHOEMAKER**  
 CONSULTING GEOLOGIST  
 316-684-9709 \* WICHITA, KS

**GEOLOGIST'S REPORT**  
 DRILLING TIME AND SAMPLE LOG

COMPANY L. D. DRILLING, INC.  
 LEASE # 1 KEASLING-PORSCH UNIT  
 FIELD WILDCAT  
 LOCATION 185' ESL 1/4 1795' FEL  
 SEC 32 TWP 6S RGE 29W  
 COUNTY SHERIDAN STATE KANSAS  
 CONTRACTOR L. D. DRILLING, INC.  
 SPUD 10-2-15 COMP 10-10-15  
 RTD 4578 LTD 4578  
 MUD UP 3468 TYPE MUD CHEMICAL

ELEVATIONS  
 KB 2839  
 DF 2834  
 GI 2834  
 Measurements Are All  
 From 2839 KB

CASING  
 SURFACE 8 5/8" @ 357'  
 PRODUCTION  
 ELECTRICAL SURVEYS  
 DUAL IND., N-DENS.

SAMPLES SAVED FROM 3500 TO 4578  
 DRILLING TIME KEPT FROM 3500 TO 4578  
 SAMPLES EXAMINED FROM 3500 TO 4578  
 GEOLOGICAL SUPERVISION FROM 3600 TO 4578  
 GEOLOGIST ON WELL KIM B. SHOEMAKER

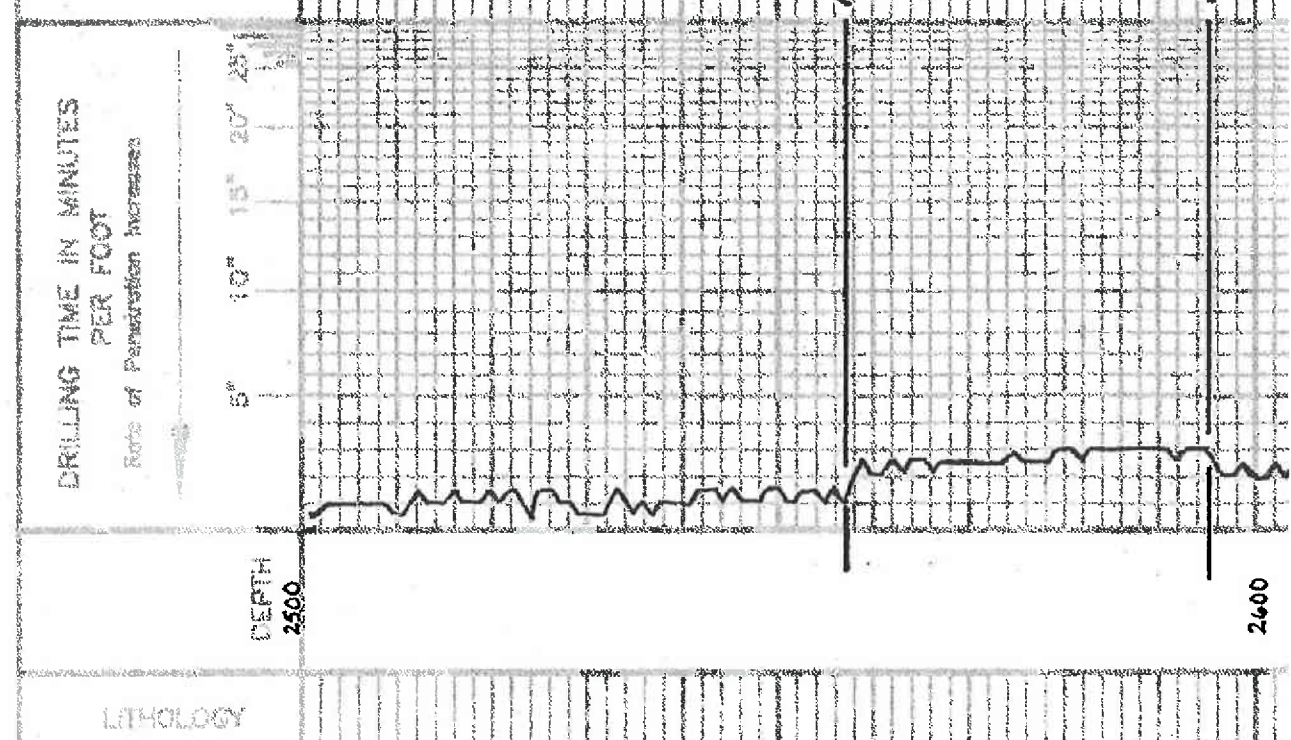
FORMATION TOPS	LOG	SAMPLES
ANHYDRITE	2558+ 281	2557+ 282
B/ANH.	2596+ 243	2595+ 244
STOTLER	3616- 777	3616- 777
HEEBNER	3934- 1095	3934- 1095
LANSING	3980- 1141	3975- 1136
MUNCIE CREEK	4086- 1247	4085- 1246
B/KC	4194- 1355	4185- 1346
FORT SCOTT	4390- 1551	4384- 1545
CHELDKEE	4405- 1566	4404- 1565
MISSISSIPPI	4500- 1661	4500- 1661



REMARKS  
 API: 15-179-21411  
 10-2-15 SPUD  
 10-3 @ 360'  
 10-4 @ 1867'  
 10-5 @ 2160'  
 10-6 @ 3531'  
 10-7 @ 4015'  
 10-8 @ 4145'  
 10-9 @ 4323'  
 10-10 @ 4578'

LEGEND

- Anhydrite
- Soft
- Sandstone
- Shale
- Carb sh
- Limestone
- Chert Lims
- Chert
- Dolomite



REMARKS

SAMPLE DESCRIPTIONS

ANHYDRITE 2557+282

B/ANH 2595+244

2600

4000

2650

3500

3600

3700

Samples are tagged

Sh. silty clay

ls. to foss.

ls. silty clay

Sh. silty clay

ls. clay

Sh. silty clay

STOFLER 3616-777

ls. silty clay

ls. clay - silty clay - foss.

ls. silty clay

ls. silty clay - foss.

ls. silty clay - foss.

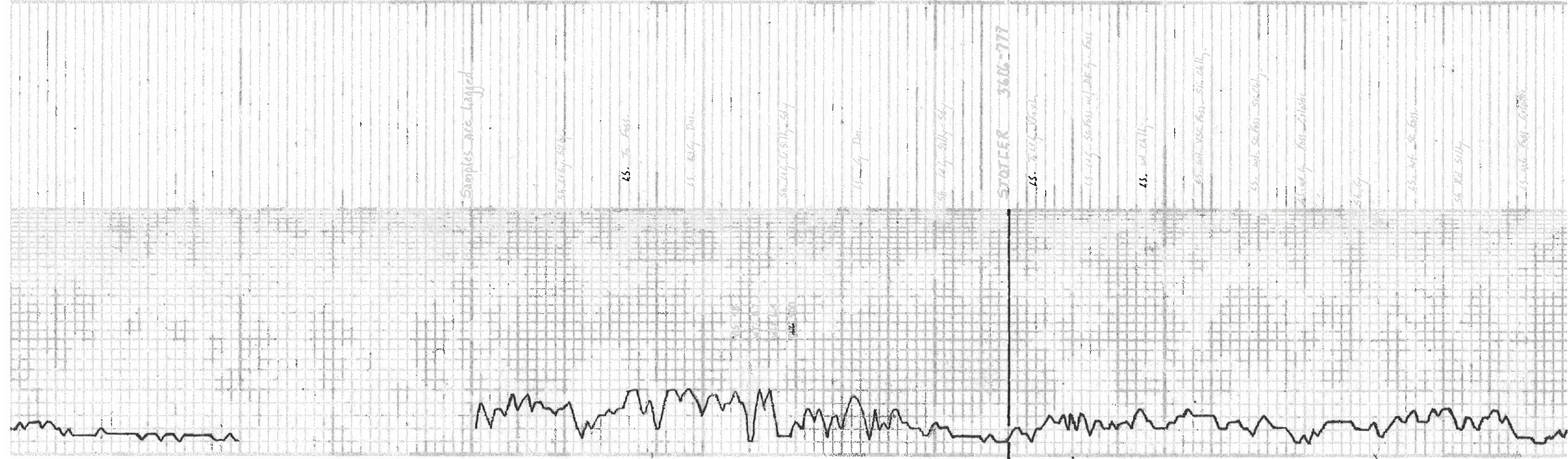
ls. silty clay - foss.

Sh. clay

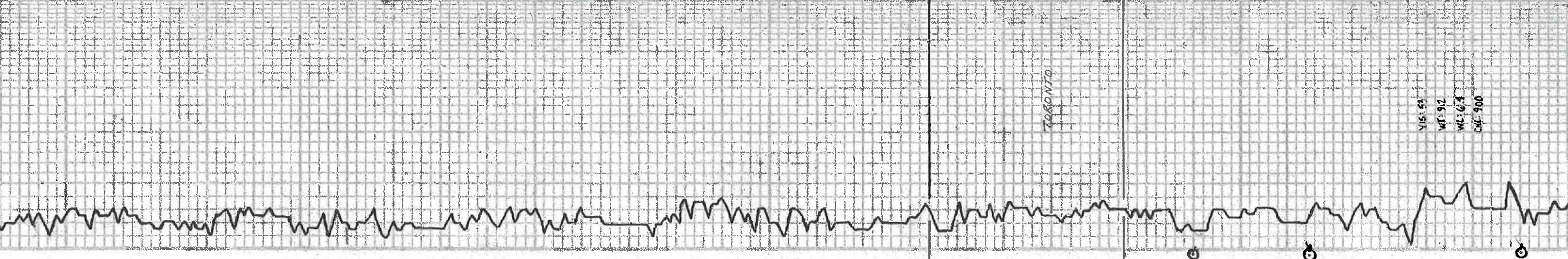
ls. silty clay - foss.

Sh. silty clay

ls. silty clay - foss.



Sh. Rd.  
 65. wt. Sil. Foss. Sil. Chlly.  
 65. Tr. g. Sil. Foss. w/ Tr. Glauc.  
 65. Tr. Sil. Foss. Sil. A.  
 Sh. Rd.  
 65. wt. dol. Foss.  
 65. wt. dol. Calcitic  
 65. wt. Sil. Foss. Sil. Chlly.  
 Sh. Rd. g.  
 Sh. L. G.  
 65. g. Sil. Foss. Sil. Calcitic  
 Sh. Rd.  
 65. g. Du.  
 65. wt. Chlly. Foss. Sil. Calcitic  
 65. wt. Chlly.  
 65. Tr. dol. Sil. A.  
 65. wt. Chlly. w/ Sil. Calcitic  
 Heebner 3934-1095  
 Sh. Rd. G. G.  
 Sh. Rd. Bluech.  
 Sh. Rd.  
 65. wt. Sil. Foss. Sil. A.  
 Sh. Rd.  
 Lansing 3975-1136  
 65. Tr. Volcan. Sil. Foss. Sil. A.  
 65. wt. Foss. dol. Sil. Calcitic  
 Sh. Rd.  
 65. wt. Sil. Foss. dol. Sil. Chlly.  
 2. Oryz.  
 65. wt. Sil. Foss. Sil. Chlly.  
 65. wt. dol. Chlly.  
 65. Tr. Sil. Foss.  
 Sh. Rd. G.  
 65. Tr. Sil. Foss. Sil. A.  
 65. wt.  
 65. wt. dol. Chlly.



2800  
 3900  
 4000  
 900  
 92  
 67  
 900  
 TORONTO  
 G  
 G  
 G



