



Fall & Associates
 Stake and Elevation Service
 P.O. Box 222
 Pretty Prairie, KS. 67570
 785-243-7506

Date 10-26-15

Invoice Number 1023152

GORE OIL COMPANY

4

Munsterman

Operator

Number

Farm Name

Rawlins-KS

19

1s

32w

1325'FSL 1145'FWL

County-State

S

T

R

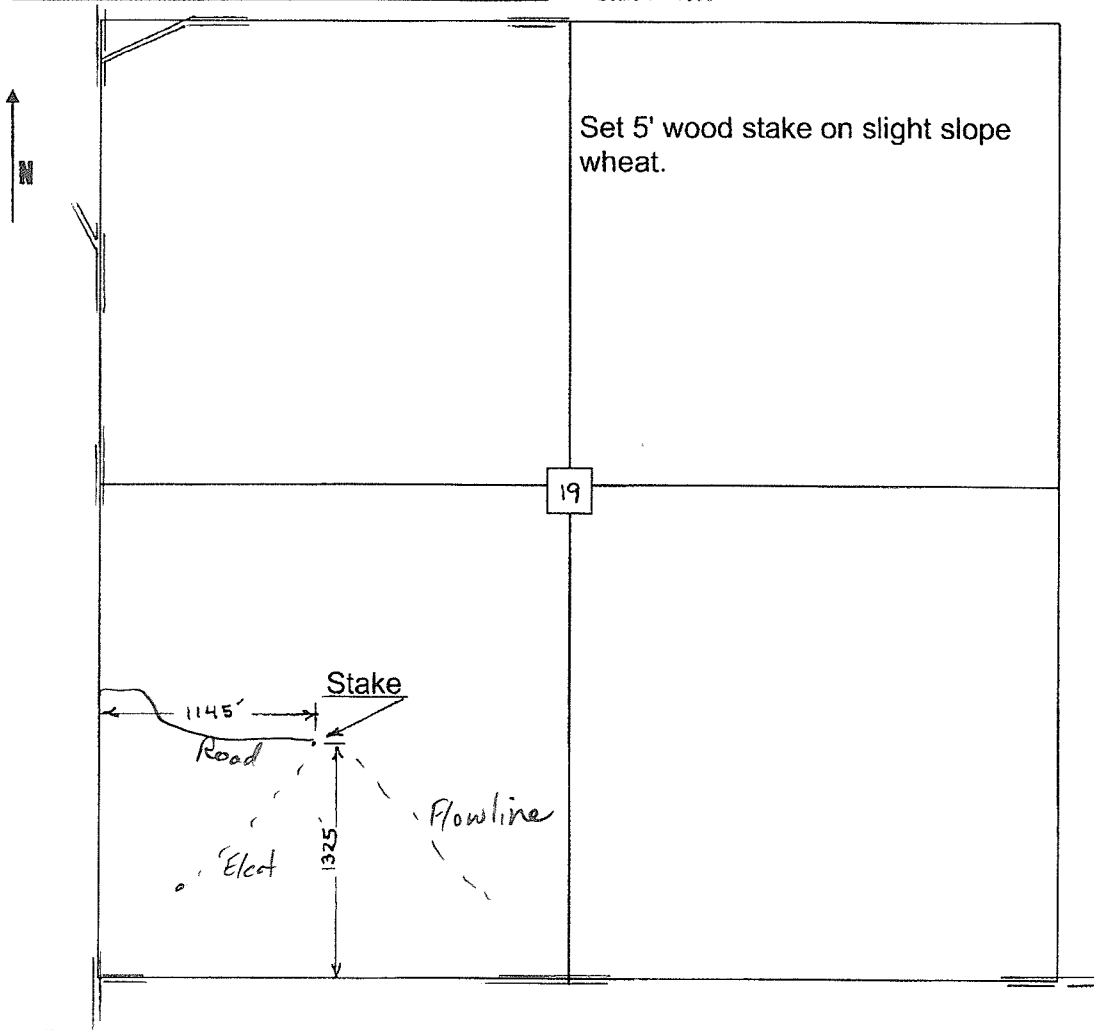
Location

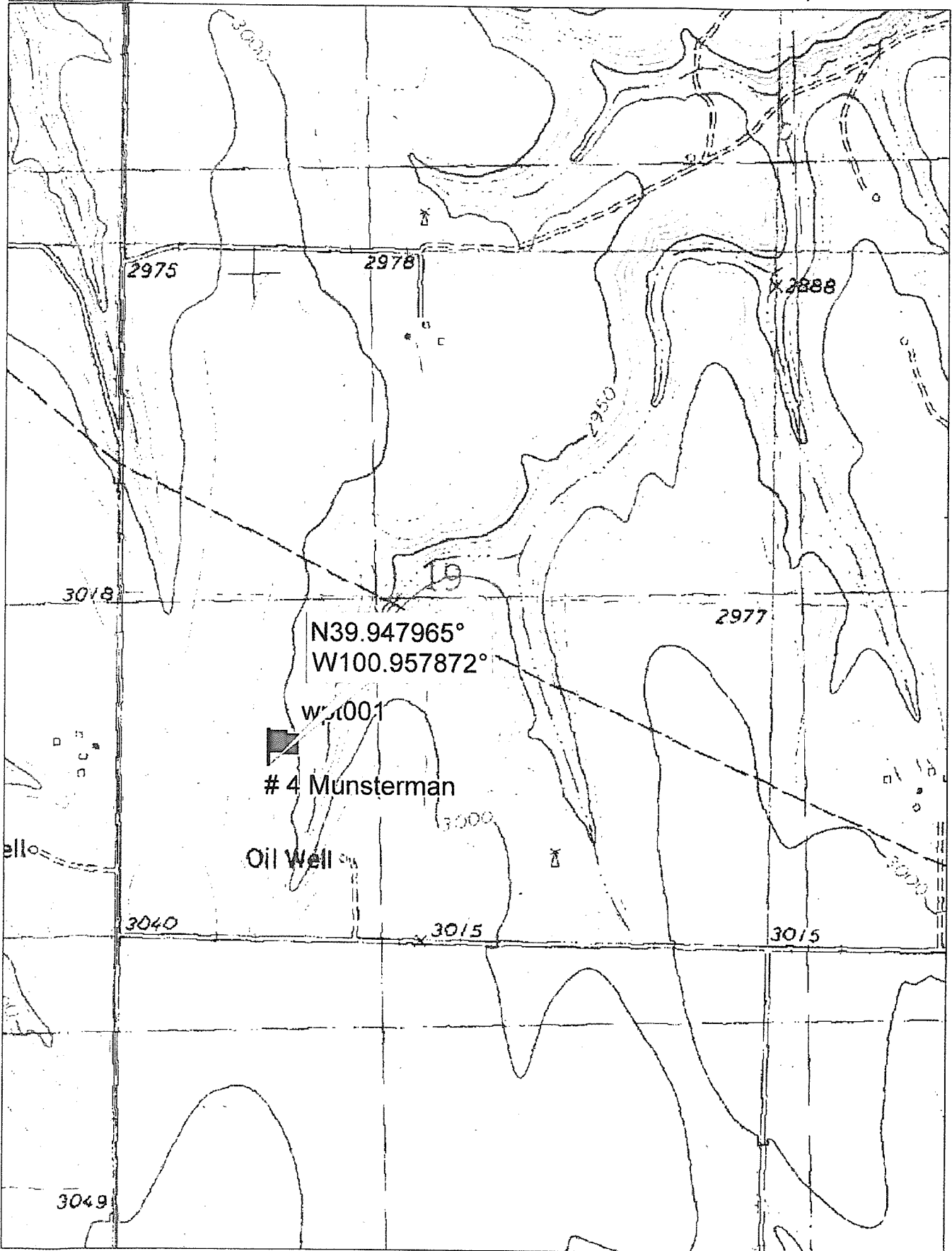
Gore Oil Company
 P.O. Box 2757
 Wichita, KS. 67201

Elevation 3016 Gr.

Ordered By: Pat

Scale 1"=1000'





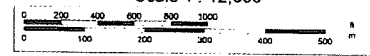
Data use subject to license.

© DeLorme. Topo North America™ 9

www.delorme.com



Scale 1 : 12,000



1" = 1,000.0 ft

Data Zoom 13-1