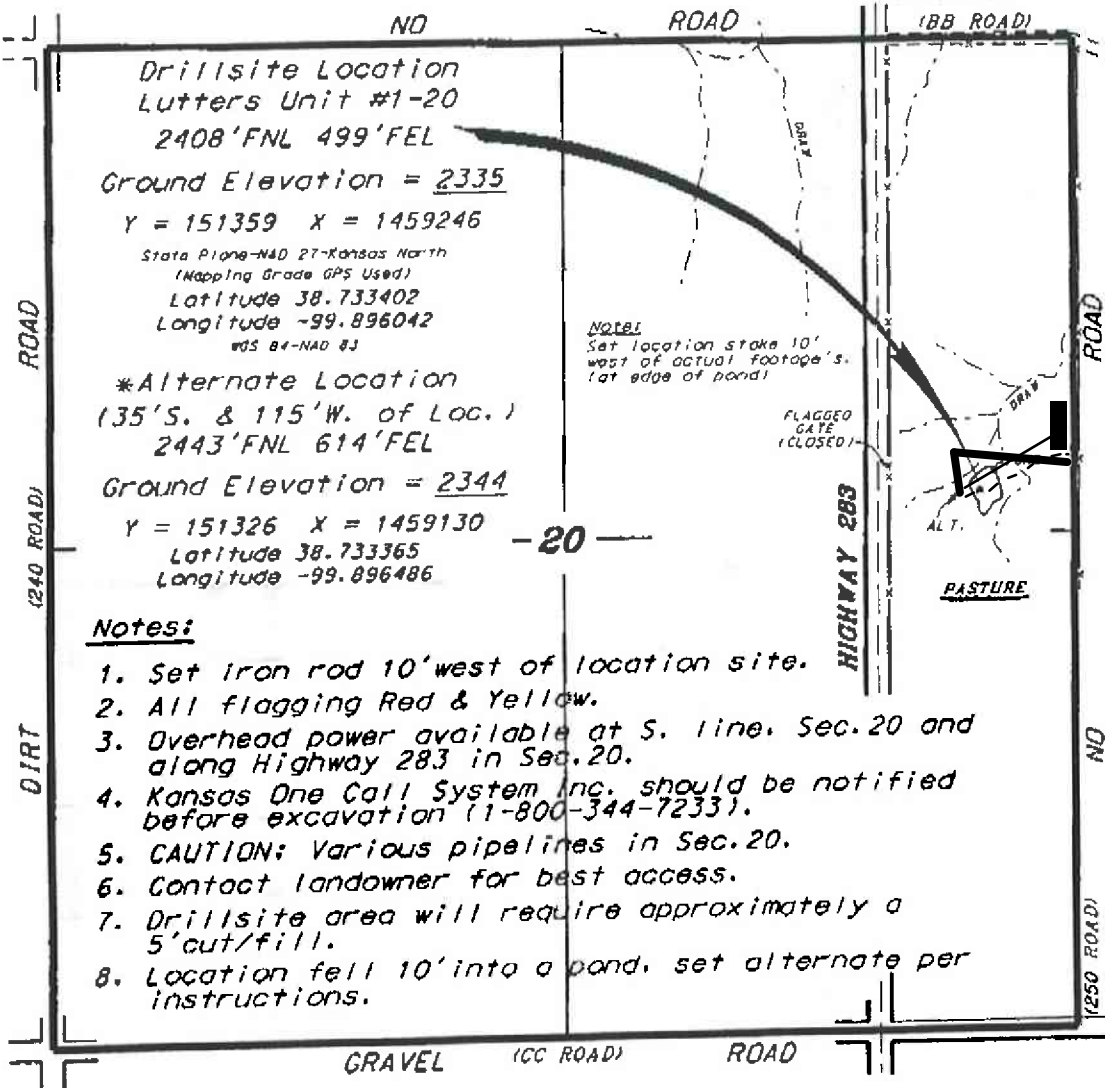


L.D. DRILLING, INC.  
LUTTERS LEASE  
NE. 1/4, SECTION 20, T15S, R23W  
TREGO COUNTY, KANSAS

Directions:

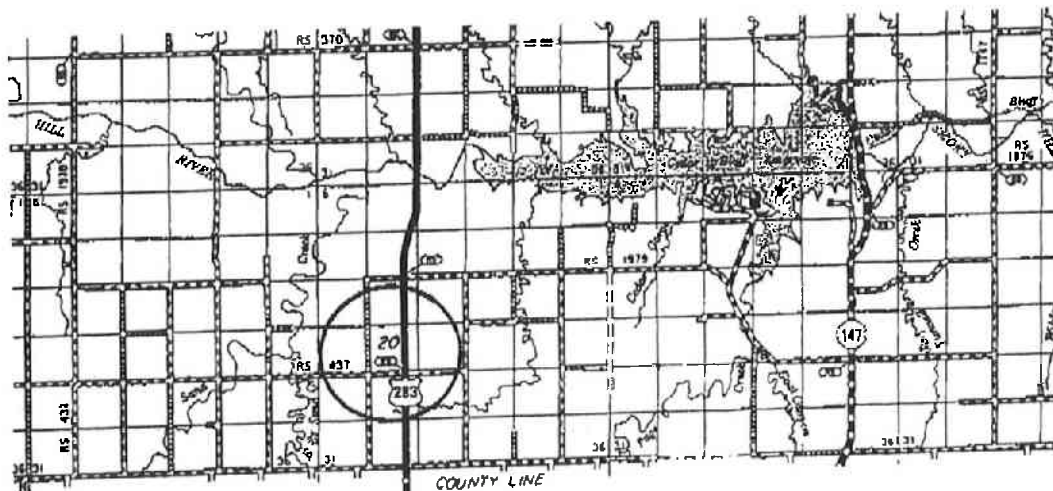
From the intersection of Highway 283 (south) and Interstate 70 at the SW corner of Wakanay, Kansas go 19.0 miles South on Highway 283 to the intersection of Highway 283 and the north line of Sec. 20, then go 0.45 miles South on Highway 283, then go 0.10 miles East to location.



\*Ingress and egress to location as shown on this plot is for usage only and may not be legally opened for public use. Contact landowner, tenant and county road department for access.

Notes:

1. Set iron rod 10' west of location site.
2. All flagging Red & Yellow.
3. Overhead power available at S. line, Sec. 20 and along Highway 283 in Sec. 20.
4. Kansas One Call System Inc. should be notified before excavation (1-800-344-7233).
5. CAUTION: Various pipelines in Sec. 20.
6. Contact landowner for best access.
7. Drillsite area will require approximately a 5' cut/fill.
8. Location fell 10' into a pond, set alternate per instructions.



\* Controlling data is based upon the best maps and photographs available to us and upon a regular section of land containing 640 acres.

\* Approximate section lines were determined using the normal standards of care of all field surveyors practicing in the state of Kansas. The section corners, which establish the precise section lines, were not physically located, and the exact location of the drillsite location in the section is not guaranteed. Therefore, the operator, securing this service and occupying this plot and all other parties relying thereon agree to hold Central Kansas Drilling Services, Inc. its officers and employees harmless from all liability, costs and expenses and hold drillers released from any liability from the operator or consequential damages.

\* Elevations derived from National Geodetic Vertical Datum.

November 6, 2015

Data