



**TRILOBITE
TESTING, INC**

DRILL STEM TEST REPORT

Berexco LLC

Sec. 30-14s-14w Russell,KS

2020 N Bromblew ood
Wichita, KS 67206

SC Unit #1-30

Job Ticket: 61641

DST#: 2

ATTN: Jeff Lawler

Test Start: 2015.08.10 @ 04:10:00

GENERAL INFORMATION:

Formation: **LKC "D-G"**

Deviated: No Whipstock: ft (KB)

Time Tool Opened: 09:23:39

Time Test Ended: 15:39:10

Test Type: Conventional Bottom Hole (Reset)

Tester: Phillip Gage

Unit No: 77

Interval: 3015.00 ft (KB) To 3090.00 ft (KB) (TVD)

Reference Elevations: 1775.00 ft (KB)

Total Depth: 3090.00 ft (KB) (TVD)

1770.00 ft (CF)

Hole Diameter: 7.88 inches Hole Condition: Fair

KB to GR/CF: 5.00 ft

Serial #: 8898 Outside

Press@RunDepth: 376.48 psig @ 3016.00 ft (KB)

Capacity: 8000.00 psig

Start Date: 2015.08.10

End Date:

2015.08.10

Last Calib.:

2015.08.10

Start Time: 04:10:01

End Time:

15:39:10

Time On Btm:

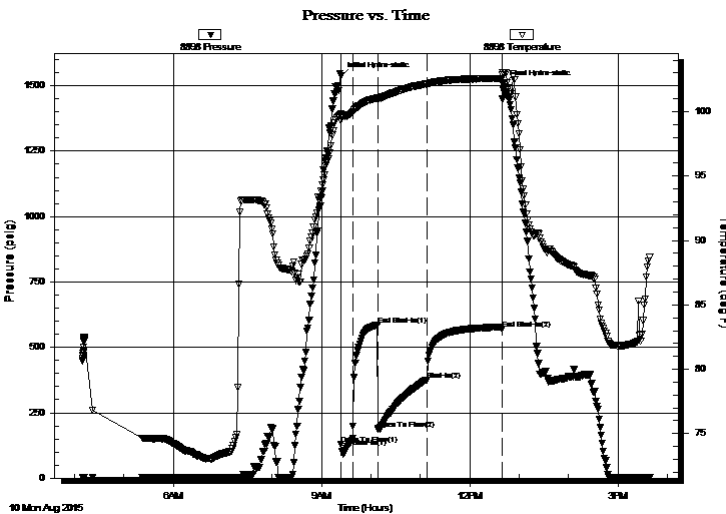
2015.08.10 @ 09:23:30

Time Off Btm:

2015.08.10 @ 12:40:09

TEST COMMENT: 15-IF-BOB in 1 min.
30-ISI-BOB in 4 mins, Gas to Surface.
60-FF-BOB in 30 seconds.
90-FSI-BOB in 4 mins.

PRESSURE SUMMARY



Time (Min.)	Pressure (psig)	Temp (deg F)	Annotation
0	1537.06	99.84	Initial Hydro-static
1	128.85	99.31	Open To Flow (1)
15	151.87	99.97	Shut-In(1)
45	585.29	101.07	End Shut-In(1)
46	186.08	101.00	Open To Flow (2)
105	376.48	102.16	Shut-In(2)
196	570.59	102.56	End Shut-In(2)
197	1506.01	103.04	Final Hydro-static

Recovery

Length (ft)	Description	Volume (bbl)
63.00	SOGCM, 10%o, 40%g, 50%m	0.61
63.00	GOCM, 20%g, 30%o, 50%m	0.88
1008.00	GO, 40%g, 60%o	14.14
0.00	GIP- 1827'	0.00

* Recovery from multiple tests

Gas Rates

Choke (inches)	Pressure (psig)	Gas Rate (Mcf/d)



**TRILOBITE
TESTING, INC**

DRILL STEM TEST REPORT

FLUID SUMMARY

Berexco LLC

Sec. 30-14s-14w Russell,KS

2020 N Bromblew ood
Wichita, KS 67206

SC Unit #1-30

Job Ticket: 61641

DST#: 2

ATTN: Jeff Lawler

Test Start: 2015.08.10 @ 04:10:00

Mud and Cushion Information

Mud Type: Gel Chem

Cushion Type:

Oil API:

30 deg API

Mud Weight: 9.00 lb/gal

Cushion Length:

ft

Water Salinity:

ppm

Viscosity: 51.00 sec/qt

Cushion Volume:

bbbl

Water Loss: 8.79 in³

Gas Cushion Type:

Resistivity: ohm.m

Gas Cushion Pressure:

psig

Salinity: 5800.00 ppm

Filter Cake: 2.00 inches

Recovery Information

Recovery Table

Length ft	Description	Volume bbbl
63.00	SOGCM, 10%o, 40%g, 50%m	0.610
63.00	GOCM, 20%g, 30%o, 50%m	0.884
1008.00	GO, 40%g, 60%o	14.140
0.00	GIP- 1827'	0.000

Total Length: 1134.00 ft

Total Volume: 15.634 bbl

Num Fluid Samples: 0

Num Gas Bombs: 0

Serial #:

Laboratory Name:

Laboratory Location:

Recovery Comments:

