

**Janel Staab**  
Consulting Petroleum Geologist

2428 Toulon Ave  
Hays, KS 67601  
Phone: 785-625-4311  
Cell Phone: 785-635-1660

**GEOLOGIST'S WELL REPORT**

COMPANY Staab Oil Company #6037

WELL Gisela Northeast

FIELD Wildcat

LOCATION (legal) NW · SW · SE · SE · 570' FSL 1105' FEL

Section 3 TWP 8 RGE 18

(Map) 9 mile North of Plainville - 1 mile West - 1/2 mile North

COUNTY Rooks STATE Kansas

ELEVATION: 1930 K.B., 1925 G.L.

Depths measured from Kelly Bushing

A. P. I. NUMBER 15-163-24294-00-00

GEOLOGY BY Janel Staab

# PERTINENT WELL DATA

CONTRACTOR Shields Drilling Company #5184

RIG # 2 HYDRAULICS Beth 225 6X14X60

DRILL PIPE 4 1/2" X-H COLLARS 6 1/4" 233

CASING: SURFACE 8 5/8" @ 221' W/150 SX Common

PRODUCTION 5 1/2" @ 3445 W/150 SX Common

DRILLING FLUID: COMPANY Mud Co / Service Mud, Inc

TYPE: Chemical Gary Schmidtberger

REMARKS: Full Service

DRILL STEM TESTS: COMPANY Trilobite Testing Inc

NUMBER OF TESTS 1

ELECTIC LOGS: COMPANY NABORS Comp + Prod. Service

DETAIL (5") 2700 - RTD

TYPE D.I. Comp N.O. Micro

DRILLING TIME FROM 2800 TO 3415 \*

SAMPLE TIME FROM 2820 TO 3445

SUPERVISION FROM 2820 TO 3445

VERTICAL DEVIATION \_\_\_\_\_

PLUGGING REPORT \_\_\_\_\_

RESERVE PIT \_\_\_\_\_

\* Drill time - Geolograph broke at 3415'

# DAILY REPORT

| DATE:   | 7 a.m. Depth | RIG ACTIVITY        |
|---------|--------------|---------------------|
| 6.22.15 |              | M.I.R.U. - SPUD     |
| 6.23.15 | 221          | W.O.C.              |
| 6.24.15 | 1372         | Drilling Anhydrite  |
| 6.25.15 | 2617         | Drilling sand + shc |
| 6.26.15 | 3222         | DST #1 LKC. E - G   |
| 6.27.15 | 3445         | T.D. Logged. P + A  |

# DRILL STEM TESTS

| NO | INTERVAL                 | IFP/TIME         | ISIP/TIME       | FFP/TIME  | FSIP/TIME | IHP/FHP    | RECOVERY           |
|----|--------------------------|------------------|-----------------|-----------|-----------|------------|--------------------|
| 1  | 3152-<br>3157<br>LKC-E-G | 280<br>280<br>5' | 6340<br><br>60' | 29<br>20' | —<br>—    | 1501*<br>— | 5' 505M<br>10% oil |
| 2  |                          |                  |                 |           |           |            |                    |
| 3  |                          |                  |                 |           |           |            |                    |
| 4  |                          |                  |                 |           |           |            |                    |
| 5  |                          |                  |                 |           |           |            |                    |
| 6  |                          |                  |                 |           |           |            |                    |
| 7  |                          |                  |                 |           |           |            |                    |
| 8  |                          |                  |                 |           |           |            |                    |

## MUD RECORD

| CHK | DEPTH | WT  | VIS | FIL | CHL  | YP |
|-----|-------|-----|-----|-----|------|----|
| 1   | 221   | -   | -   | -   | -    | -  |
| 2   | 1570  | 9.3 | 29  | NC  | 9600 | -  |
| 3   | 2728  | 8.6 | 49  | 8.8 | 2700 | 18 |
| 4   | 3222  | 9.0 | 48  | 8.0 | 2800 | 19 |
| 5   | 3445  | 9.4 | 59  | 7.6 | 2800 | 25 |
| 6   |       |     |     |     |      |    |
| 7   |       |     |     |     |      |    |
| 8   |       |     |     |     |      |    |
| 9   |       |     |     |     |      |    |
| 10  |       |     |     |     |      |    |
| 11  |       |     |     |     |      |    |

L.C.M

N:1

2

2

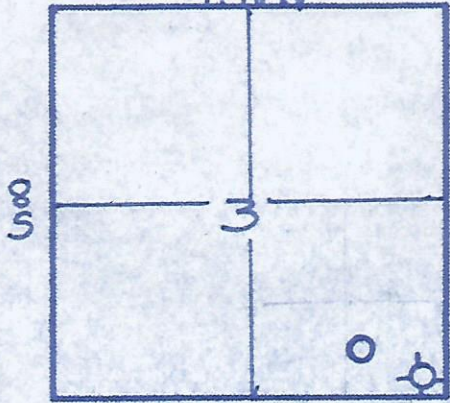
1

## BIT RECORD

| NO | SIZE  | MAKE | TYPE      | DEPTH | FEET | HOURS |
|----|-------|------|-----------|-------|------|-------|
| 1  | 1 1/4 | Reed | Milltooth | 221   | 221  | 5'    |
| 2  | 7/8   | Reed | S.52      | 3445  | 3224 |       |
| 3  |       |      |           |       |      |       |
| 4  |       |      |           |       |      |       |
| 5  |       |      |           |       |      |       |

# FORMATION TOPS & STRUCTURAL GEO

= R 18 W



REFERRED TO:

- A: John Farmer - Graves
- #1 Eckart SE. SE. S
- B: \_\_\_\_\_
- C: \_\_\_\_\_
- D: \_\_\_\_\_
- E: \_\_\_\_\_

| STRATIGRAPHIC<br>MARKERS | SUBJECT WELL |        | STRUCTURAL POSITION |       |   |
|--------------------------|--------------|--------|---------------------|-------|---|
|                          | SAMPLE       | E. LOG | DATUM               | A     | B |
|                          | Corrected    |        |                     |       |   |
| Anhydrite                | 1338         | 1337   | +593                | +609  |   |
| Base                     | 1372         | 1372   | +558                |       |   |
| Topeka                   | 2858 2856    |        | -926                | -918  |   |
| Heebner Sh.              | 3068         | 3065   | -1135               | -1127 |   |
| Toronto                  | 3080         | 3087   | -1157               | -1150 |   |
| Lansing                  | 3109         | 3108   | -1178               | -1169 |   |
| Bk.                      | 3332         | 3329   | -1399               | -1392 |   |
| Arbuckle                 | 3427         | 3427   | -1497               | -1468 |   |
| TD.                      | 3445         | 3444   | -1514               | -1524 |   |

\*Structural position of subject well as compared to refer

LOGY

Drilling Co.  
3

D E  
Final from  
Samples  
1335  
1372  
2831  
3038  
3070  
3080  
3290  
3382  
3445

ed well.

### SUMMARY

The Gisela Northeast #1 was drilled us  
Shields #2. Location was Sec 3, T 8 S. R  
Books Co. Starting on June 22, 2015 and  
reaching T.D. on June 27, 2015

3.0 seismic indicated that this  
was on the upside of a fault and was  
to surrounding dry holes.

1 DST and logs were ran The DST  
negative results After logging we ran  
the correlating well to the Southeast

As a result of negative DST and  
Structurally producer P + A location

*Paul Stead*

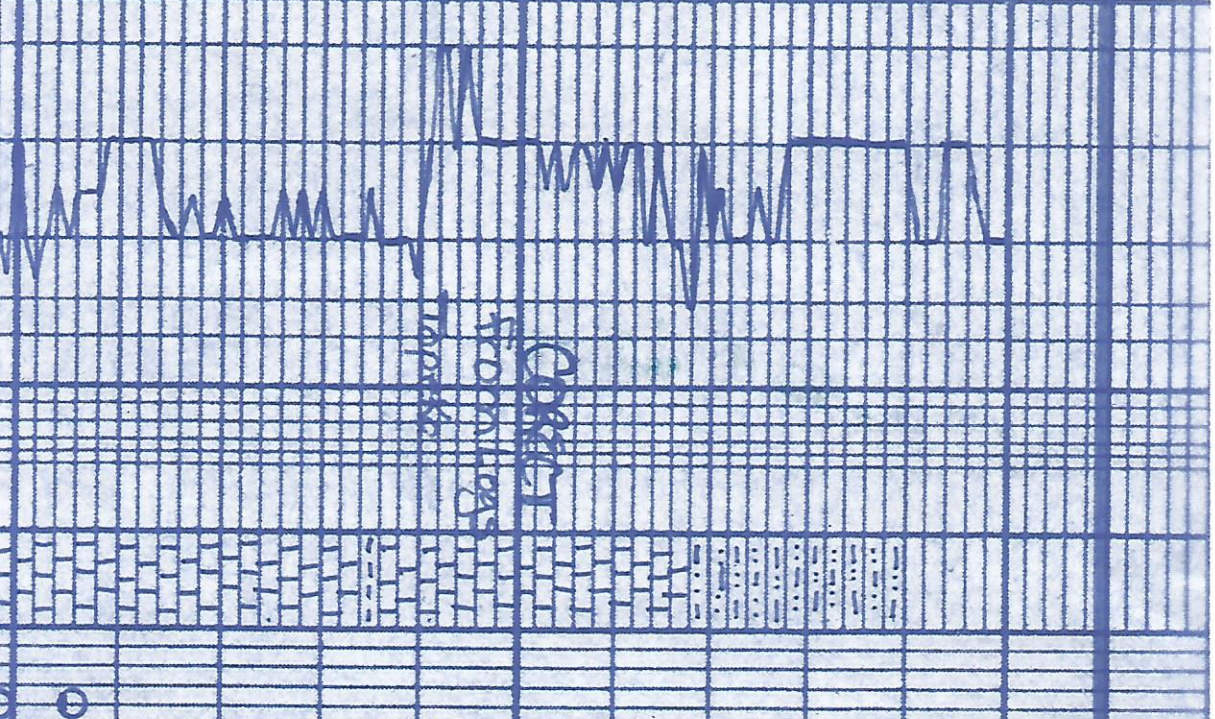


2800

Topek 30  
2831

2900

10  
20  
30  
40  
50  
60  
70  
80  
90



MUD  
WTS 49  
Lobs

Geo on location  
@ 3:00 PM  
6-25-15

sh + siltst. - gray - brn - red. green

ls. off. wh. - gray f. wh. siltst. cherty

ls. off. wh. - gray f. wh. fossil pyrite

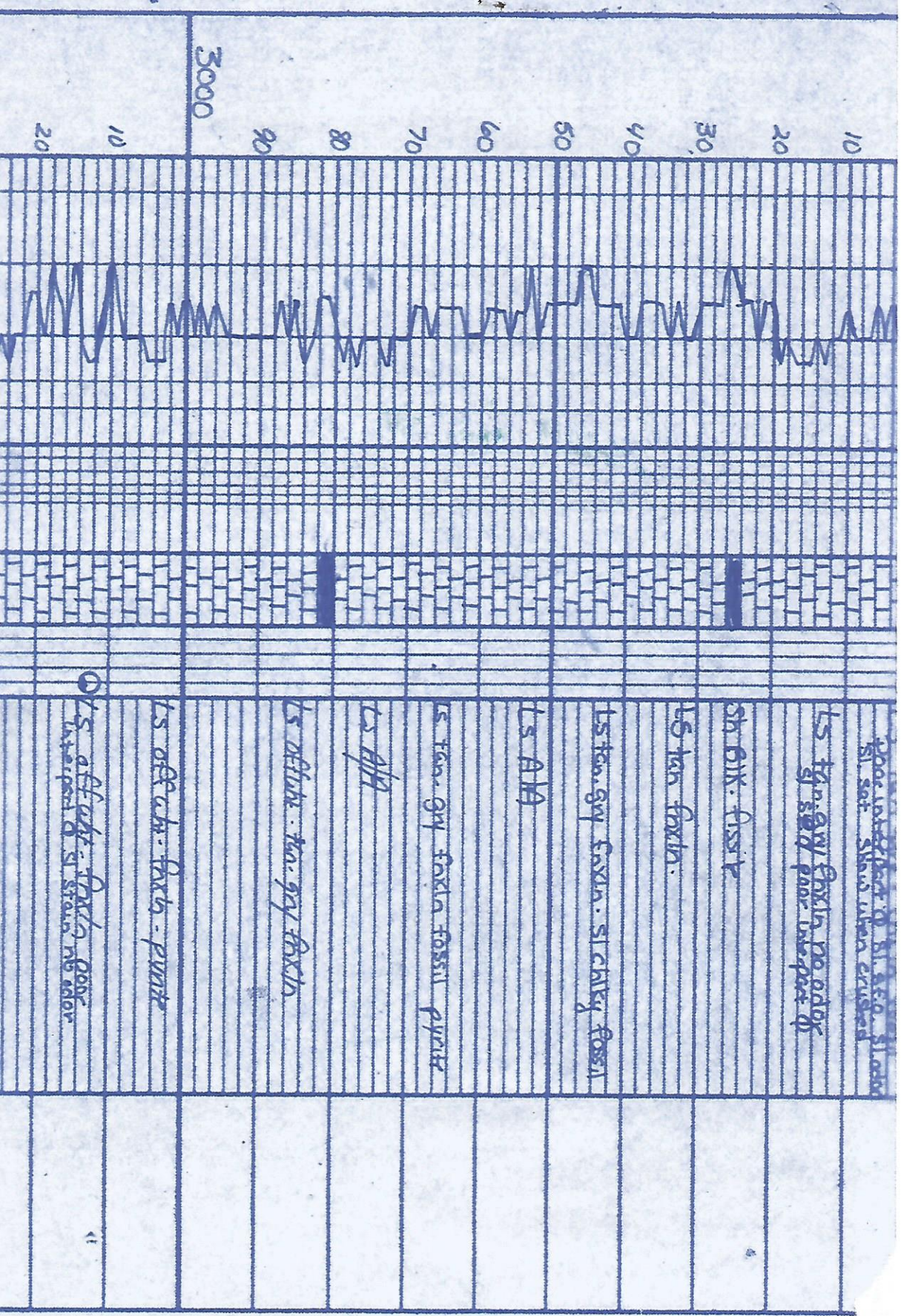
ls - tan f. wh.

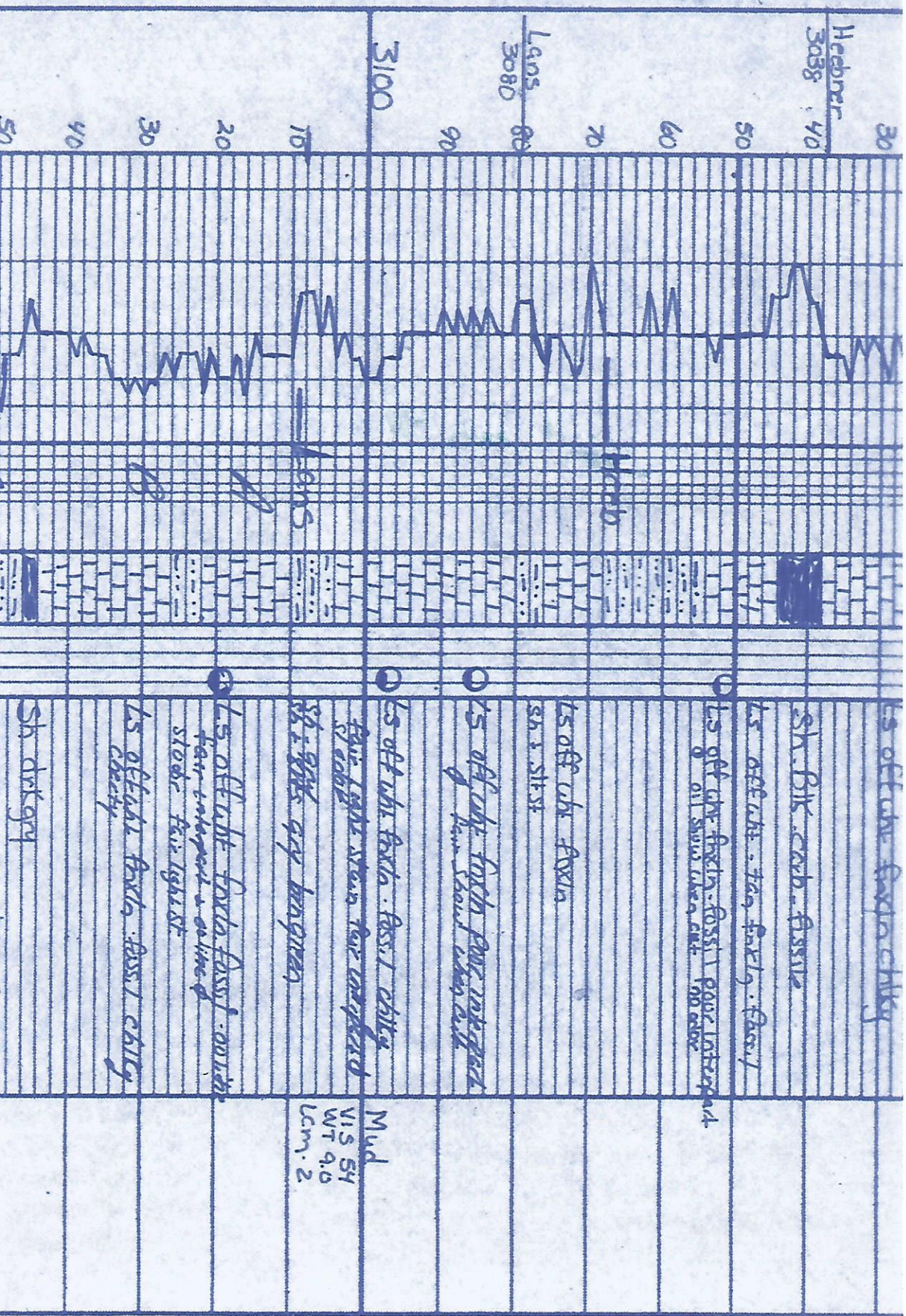
sh. dark gray

ls. off. wh. - tan. gray f. wh. fossil pyrite

① ls. f. wh. - gray f. wh. siltst. cherty  
Stn. 21. 15 ft. 100. 100. 100. 100. 100.







ES off the top Expanding

Sh. Blk. carb. fissile

LS off the top - tan, fossilif. fossiliferous

LS off the top - fossiliferous

LS off the top - fossiliferous

LS off the top - fossiliferous

LS off the top - fossiliferous

LS off the top - fossiliferous

LS off the top - fossiliferous

LS off the top - fossiliferous

LS off the top - fossiliferous

LS off the top - fossiliferous

LS off the top - fossiliferous

LS off the top - fossiliferous

LS off the top - fossiliferous

LS off the top - fossiliferous

LS off the top - fossiliferous

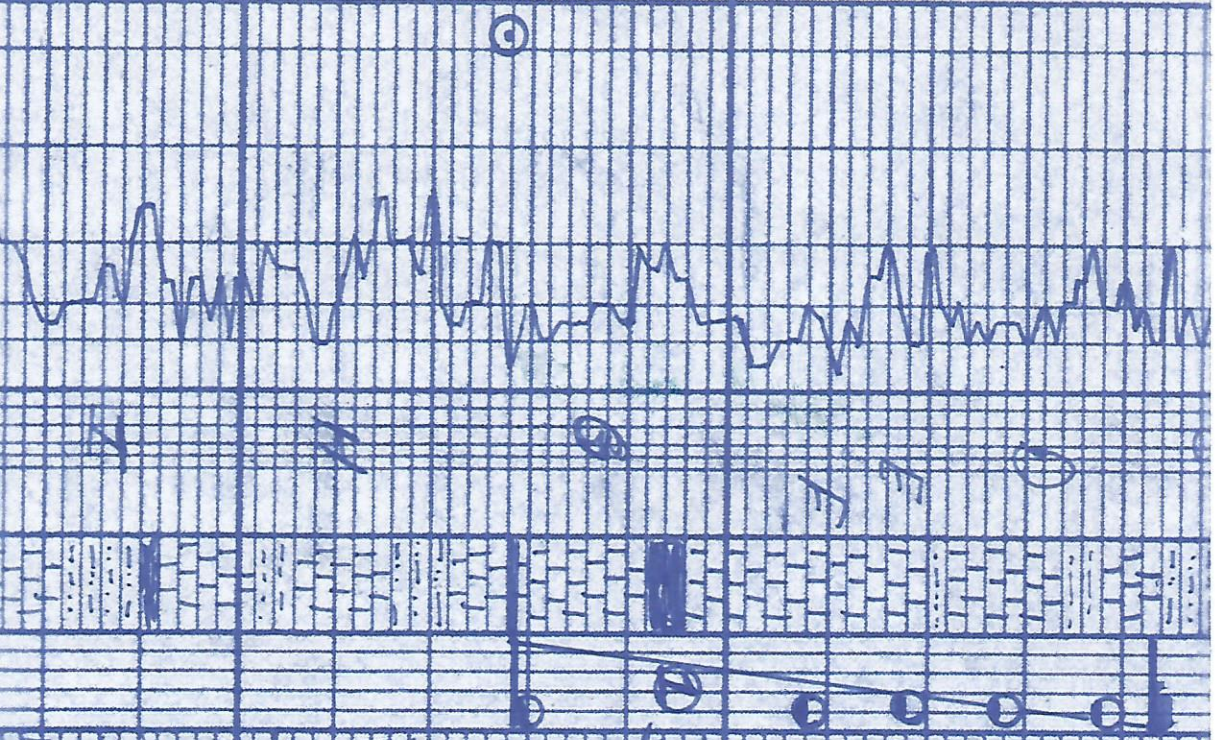
Sh. dk. gray

Mud  
V.S. 54  
W.T. 9.0  
Lcm. 2

Hebner  
3038 40  
3100  
L 905 80  
3080 90

3200

60  
70  
80  
90  
20  
30  
40  
50  
60  
70



LS off white fxyln. oolitic fossil  
 fair interpart  $\phi$  light stain  
 no odor

LS off white v fxyln. poor interpart  
 $\phi$  shows when crushed no odor

LS off wh v fxyln. fxyln. poor  
 interpart  $\phi$  sl. s.  $\phi$  no odor

LS off white fxyln. sl chcy pyrite  
 fair interpart + veyrd S.F.O

LS off wh. fxyln. fossil  
 sh dark gray

LS off wh. fxyln. oolitic fossil  
 fair interpart veyrd stain of wh  
 sl. odor

sh. st. st. - gray. red gr

LS off white. fxyln. - oolitic fossil  
 pyrite sl. odor

sh. - gray. red. green,  
 LS off white fxyln. fossil

sh. bit fxyln.  
 sh. st. st. gray. red. green

LS off white fxyln. oolitic  
 sl. odor

Mud  
 V/S 82  
 W/T 9.1  
 Lcm 2

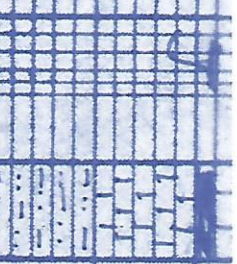
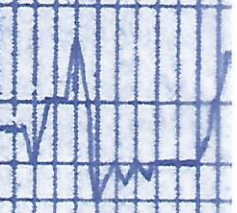
OST #1  
 3157.3227  
 LXC. E.G  
 5:40:20 -  
 Rec S. 505 m  
 190.011

FP 28.28 29 -  
 SIP 634.

Mud  
 V/S 50  
 W/T 9.3

BKC 70 80

3300



Sh. Brk carb  
LS fine gr. off white clay no fl  
sh. s. s. no odor sh. white  
crushed  
Sh. s. s. s. red gray green

LS off white fine gr. clay  
no odor some inter part of s. s. s. f. n.

sh - gray - red - dark gray

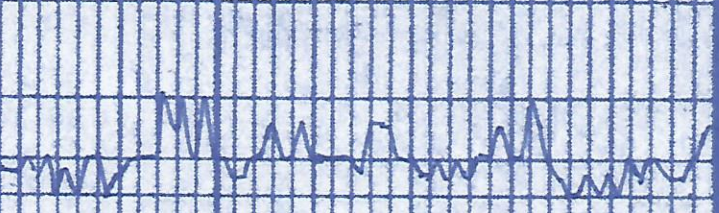
LS soft white - lighter gray - brown  
fossil

sh - s. s. s. gray - red - green - cherty

gray - sh - s. s. s. gray - red - green  
cherty - sandy - cherty

MUD  
VIS 55  
WT 9.2  
LCM - 1

60 50 40 30 20 10



LS off white fine gr. clay  
good inter part of s. s. s. f. n.  
f. n. (1 pc)

sh - s. s. s. gray - red - green  
cherty

Do not show fine inter part - very b  
s. s. s. no odor

Arbutus 3382

90



3500

10  
20  
30  
40  
50  
60  
70  
80  
90

7:00  
5:15 A.M. 6

22.13



Mud



Do westward change of  
sh. first gy. br. red. grey

Do westward change of  
sh. & first gy. br. red. grey

Mud  
VIS 99  
WT 94  
LCM 1