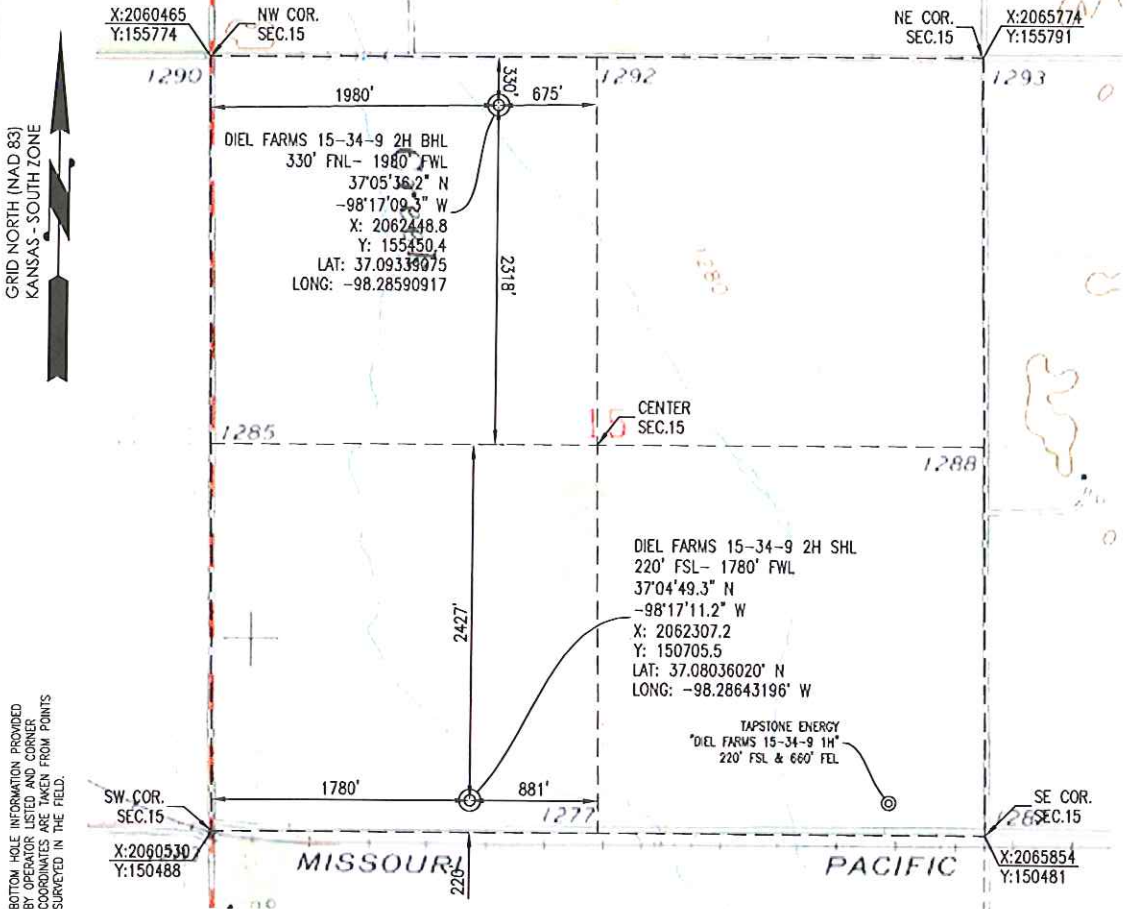




1000 Ledge'lawn Dr.
 Conway, Arkansas 72034
 501.328.3316 f 501.328.3325 f
 www.craftontull.com

HARPER COUNTY, KANSAS
 220' FSL- 1780' FWL SECTION 15 TOWNSHIP 34S RANGE 09W 6TH P.M.



OPERATOR: TAPSTONE ENERGY

WELL NO: 2H

ELEVATION:
1279' GR. AT STAKE

LEASE NAME: DIEL FARMS 15-34-9

TOPOGRAPHIC & VEGETATION: LOCATION FELL IN A FIELD

GOOD DRILL SITE: YES REFERENCE STAKES OR ALTERNATE LOCATION STAKES SET: NONE

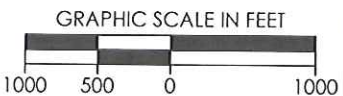
BEST ACCESSIBILITY TO LOCATION: SOUTH OR WEST LINE

DISTANCE & DIRECTION
 FROM HWY JCT OR TOWN: FROM THE JCT. OF KS-58 (SW 140 AVE) & SW 80 RD (±7.0 MILES
 SOUTHEAST OF HAZELTON, KS), TRAVEL NORTH ON KS-58 (SW 140 AVE) ±3.0 MILES TO
 SW 50 RD TO THE SOUTHEAST CORNER OF SECTION 15, T34S-R09W.

(THE FOLLOWING INFORMATION WAS GATHERED USING A GPS RECEIVER ACCURACY ±2-3 METERS)
 GPS DATUM: NAD-27
 LAT: 37.08036020° N
 LONG: -98.28643196° W
 STATE PLANE COORDINATES:
 ZONE: KS-SOUTH NAD-27
 X: 2062307.2
 Y: 150705.5

DATE STAKED: 11-2-2015

GENERAL NOTES:
 THE TIES AND FOOTAGES SHOWN ON THIS PLAT ARE FROM LINES OF OCCUPATION FROM A SURVEY MADE ON THE GROUND AND / OR BEARING AND DISTANCES FROM THE GENERAL LAND OFFICE PLAT OF THE AREA SHOWN AND MAY NOT BE THE ACTUAL PROPERTY CORNERS. THIS PLAT DOES NOT REPRESENT A TRUE BOUNDARY SURVEY. DRILL SITE CONDITION DETERMINATIONS WERE MADE BY TAPSTONE ENERGY REPRESENTATIVES.



REVISION	<p>"DIEL FARMS 15-34-9 2H" PART OF THE SW1/4 OF SECTION 15, T-34-S, R-09-W PROPOSED DRILL SITE HARPER COUNTY, KANSAS</p>		
1 REVISED BHL 11-3-15			
	SCALE: 1" = 1000'	DRAWN BY: JWb	SHEET NO.: 2 OF 5