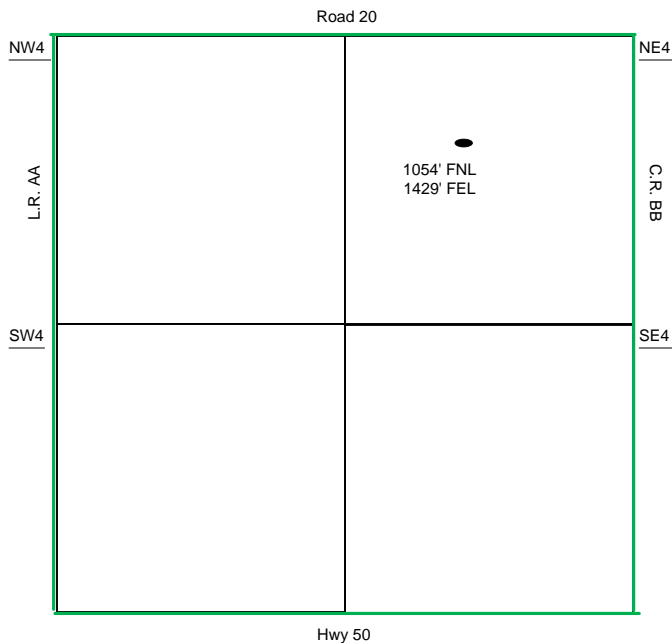
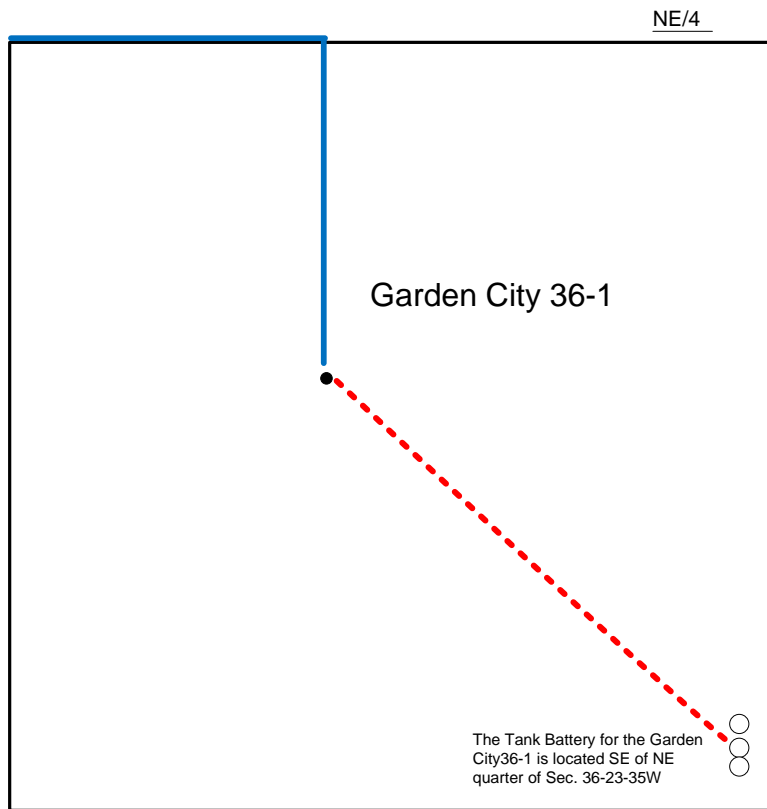


Proposed Plan of Construction

Garden City 36-1  
Sec 36 T23S-R35W  
Kearny County, KS



Sec 36 – T23S – R35W



Proposed Details of  
NE/4 Sec 36 – T23S – R35W

Proposed Site Diagram  
Garden City 36-1  
October 8, 2015

Note-Drawing **Not** to Scale