

Fall & Associates
Stake and Elevation Service
P.O. Box 222
Pretty Prairie, KS. 67570
785-243-7506

Date 10-6-15

Invoice Number 1005151

MURFIN DRILLING

1-7

Mary Ann 'A'

Operator

Number

Farm Name

Rawlins-KS

7

1s

35w

1980'FNL 2140'FWL

County-State

S

T

R

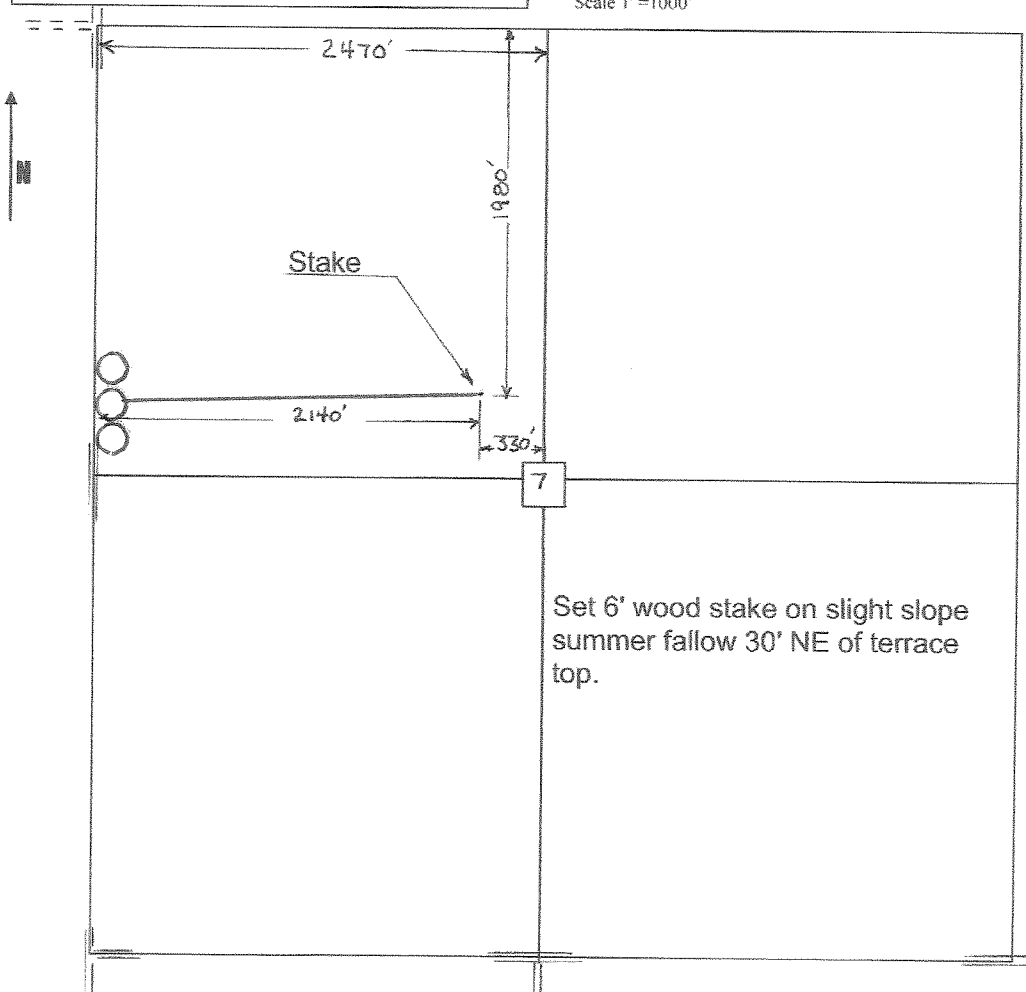
Location

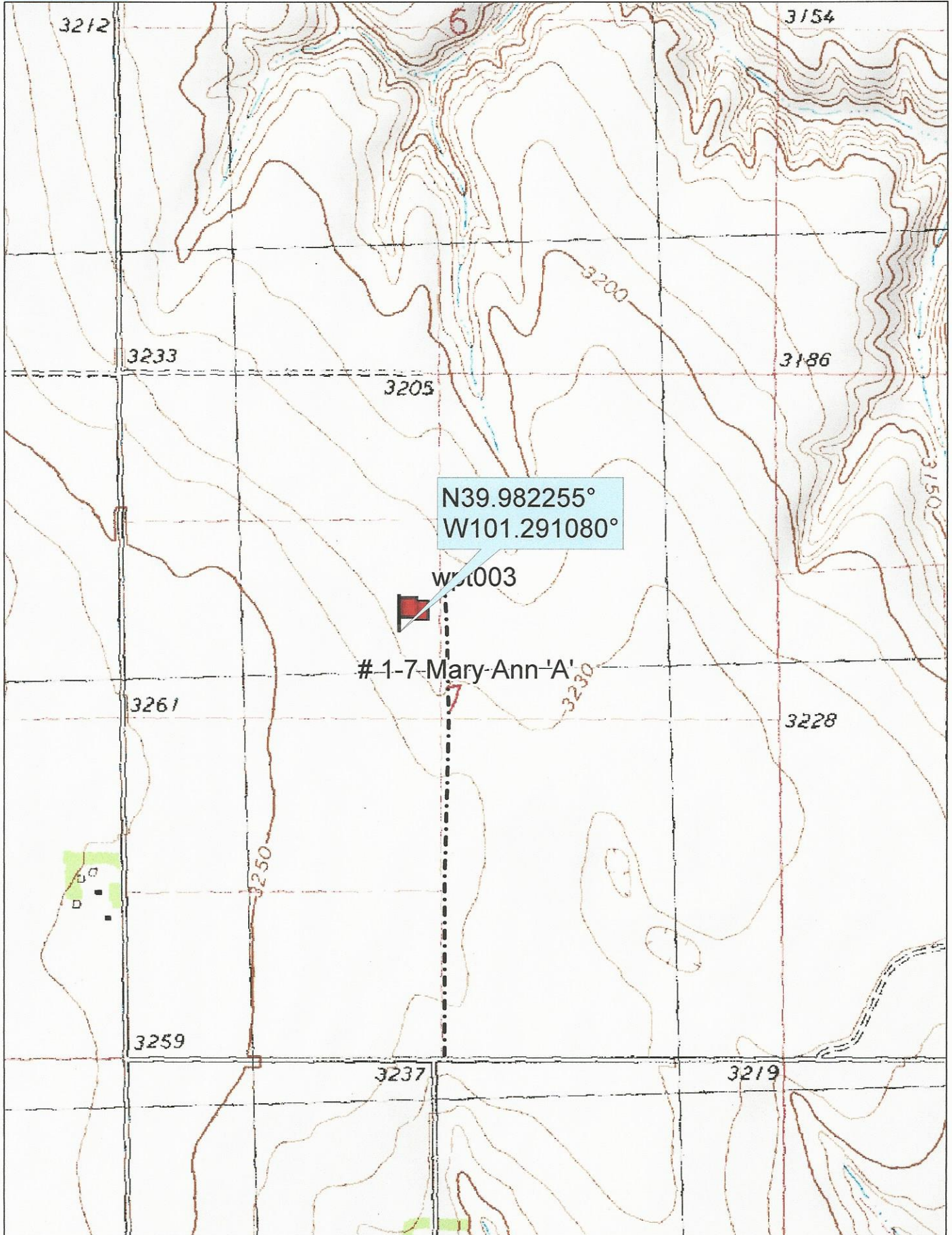
Murfin Drilling
250 N. Water
Suite 300
Wichita, KS. 67202

Elevation 3240 Gr.

Ordered By: Shauna

Scale 1"=1000'





Data use subject to license.

© DeLorme. Topo North America™ 9.

www.delorme.com

