



DRILL STEM TEST REPORT

Prepared For: **Carmen Schmitt Inc**

PO Box 47
Great Bend, KS 67503-0047

ATTN: Brad Rine

Ziegelmeier #1-2

2-7s-32w Thomas,KS

Start Date: 2015.11.06 @ 23:15:38

End Date: 2015.11.07 @ 03:46:08

Job Ticket #: 45520 DST #: 1

Trilobite Testing, Inc
1515 Commerce Parkway Hays, KS 67601
ph: 785-625-4778 fax: 785-625-5620

Printed: 2015.11.12 @ 08:19:20



**TRILOBITE
TESTING, INC**

DRILL STEM TEST REPORT

Carmen Schmitt Inc
 PO Box 47
 Great Bend, KS 67503-0047
 ATTN: Brad Rine

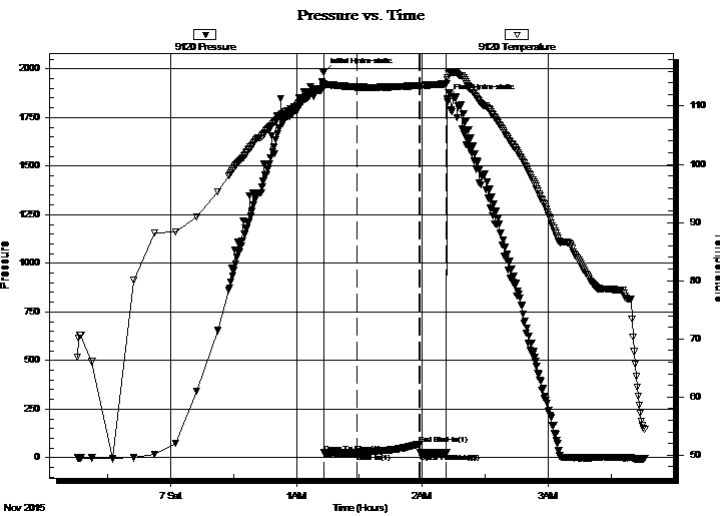
2-7s-32w Thomas,KS
Ziegelmeier #1-2
 Job Ticket: 45520 **DST#: 1**
 Test Start: 2015.11.06 @ 23:15:38

GENERAL INFORMATION:

Formation: **Toronto - LKC A**
 Deviated: No Whipstock: ft (KB)
 Time Tool Opened: 01:13:08
 Time Test Ended: 03:46:08
 Interval: **3994.00 ft (KB) To 3990.00 ft (KB) (TVD)**
 Total Depth: 3990.00 ft (KB) (TVD)
 Hole Diameter: 7.88 inches Hole Condition: Fair
 Test Type: Conventional Bottom Hole (Initial)
 Tester: Shane McBride
 Unit No: 84
 Reference Elevations: 2999.00 ft (KB)
 2994.00 ft (CF)
 KB to GR/CF: 5.00 ft

Serial #: 9120 Outside
 Press@RunDepth: 25.05 psig @ 3935.00 ft (KB) Capacity: 8000.00 psig
 Start Date: 2015.11.06 End Date: 2015.11.07 Last Calib.: 2015.11.07
 Start Time: 23:15:38 End Time: 03:46:08 Time On Btm: 2015.11.07 @ 01:12:53
 Time Off Btm: 2015.11.07 @ 02:11:53

TEST COMMENT: 1/4" blow died back to a weak surface blow
 No return
 No blow, pull tool after 10 min.



PRESSURE SUMMARY

Time (Min.)	Pressure (psig)	Temp (deg F)	Annotation
0	1982.45	113.86	Initial Hydro-static
1	24.54	113.31	Open To Flow (1)
16	25.05	113.29	Shut-In(1)
46	70.47	113.54	End Shut-In(1)
46	25.11	113.52	Open To Flow (2)
59	24.75	113.83	Shut-In(2)
59	1846.62	114.60	Final Hydro-static

Recovery

Length (ft)	Description	Volume (bbl)
1.00	mud 100%m	0.00

Gas Rates

Choke (inches)	Pressure (psig)	Gas Rate (Mcf/d)



**TRILOBITE
TESTING, INC**

DRILL STEM TEST REPORT

TOOL DIAGRAM

Carmen Schmitt Inc

2-7s-32w Thomas,KS

PO Box 47
Great Bend, KS 67503-0047

Ziegelmeier #1-2

Job Ticket: 45520

DST#: 1

ATTN: Brad Rine

Test Start: 2015.11.06 @ 23:15:38

Tool Information

Drill Pipe:	Length: 3789.00 ft	Diameter: 3.80 inches	Volume: 53.15 bbl	Tool Weight: 2500.00 lb
Heavy Wt. Pipe:	Length: 0.00 ft	Diameter: 0.00 inches	Volume: 0.00 bbl	Weight set on Packer: 25000.00 lb
Drill Collar:	Length: 120.00 ft	Diameter: 2.25 inches	Volume: 0.59 bbl	Weight to Pull Loose: 75000.00 lb
			<u>Total Volume: 53.74 bbl</u>	Tool Chased 0.00 ft
Drill Pipe Above KB:	3.00 ft			String Weight: Initial 61000.00 lb
Depth to Top Packer:	3934.00 ft			Final 61000.00 lb
Depth to Bottom Packer:	ft			
Interval between Packers:	56.00 ft			
Tool Length:	84.00 ft			
Number of Packers:	2	Diameter: 6.75 inches		

Tool Comments:

Tool Description

Tool Description	Length (ft)	Serial No.	Position	Depth (ft)	Accum. Lengths
Change Over Sub	1.00			3907.00	
Shut In Tool	5.00			3912.00	
Hydraulic tool	5.00			3917.00	
Jars	5.00			3922.00	
Safety Joint	3.00			3925.00	
Packer	5.00			3930.00	28.00 Bottom Of Top Packer
Packer	4.00			3934.00	
Stubb	1.00			3935.00	
Recorder	0.00	9120	Outside	3935.00	
Recorder	0.00	8938	Inside	3935.00	
Perforations	16.00			3951.00	
Change Over Sub	1.00			3952.00	
Drill Pipe	32.00			3984.00	
Change Over Sub	1.00			3985.00	
Bullnose	5.00			3990.00	56.00 Bottom Packers & Anchor

Total Tool Length: 84.00



**TRILOBITE
TESTING, INC**

DRILL STEM TEST REPORT

FLUID SUMMARY

Carmen Schmitt Inc

2-7s-32w Thomas,KS

PO Box 47
Great Bend, KS 67503-0047

Ziegelmeier #1-2

Job Ticket: 45520

DST#: 1

ATTN: Brad Rine

Test Start: 2015.11.06 @ 23:15:38

Mud and Cushion Information

Mud Type: Gel Chem

Cushion Type:

Oil API:

0 deg API

Mud Weight: 9.00 lb/gal

Cushion Length:

ft

Water Salinity:

0 ppm

Viscosity: 48.00 sec/qt

Cushion Volume:

bbbl

Water Loss: 5.56 in³

Gas Cushion Type:

Resistivity: 0.00 ohm.m

Gas Cushion Pressure:

psig

Salinity: 1500.00 ppm

Filter Cake: 1.00 inches

Recovery Information

Recovery Table

Length ft	Description	Volume bbl
1.00	mud 100%m	0.005

Total Length: 1.00 ft Total Volume: 0.005 bbl

Num Fluid Samples: 0

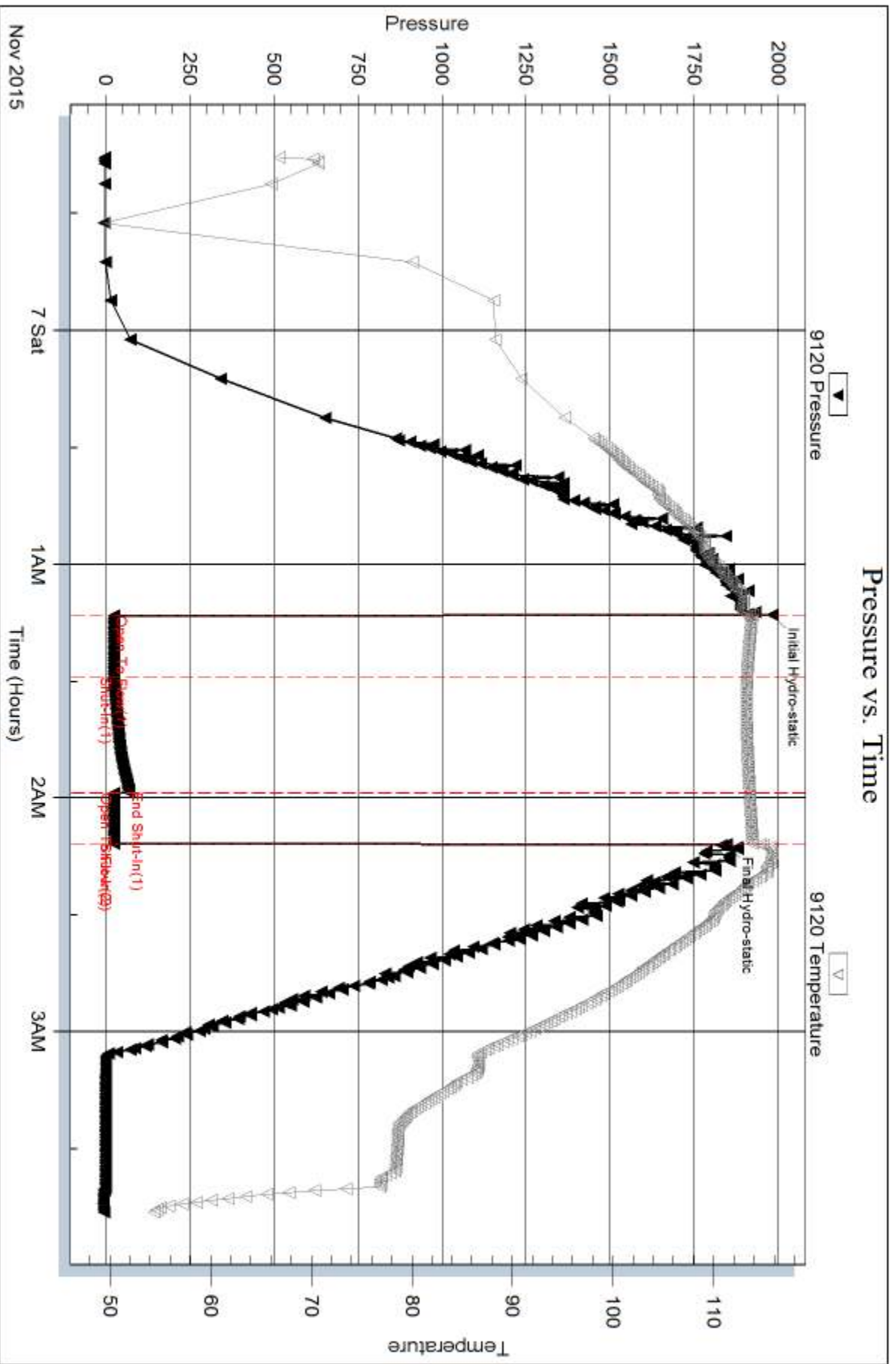
Num Gas Bombs: 0

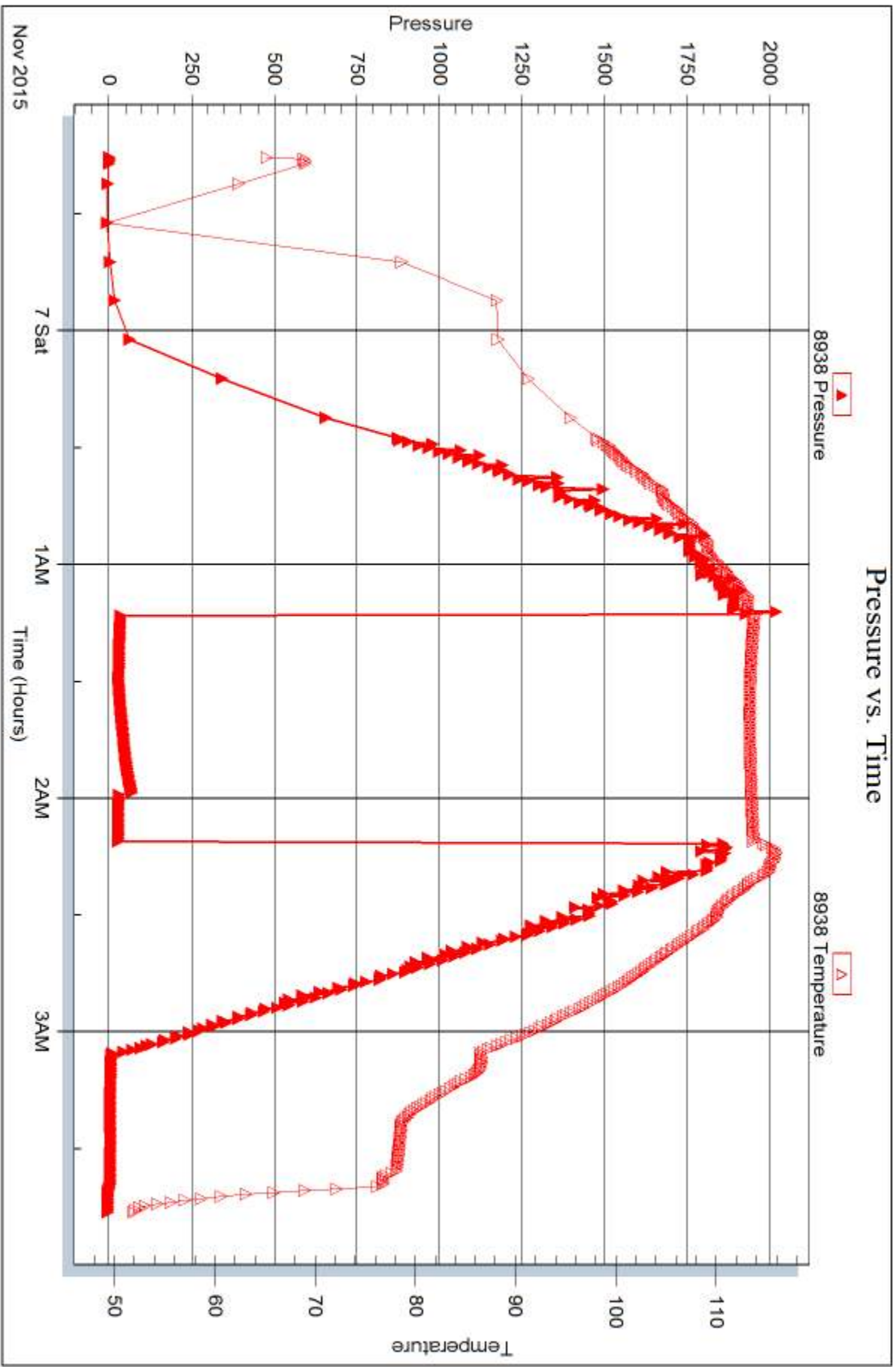
Serial #:

Laboratory Name:

Laboratory Location:

Recovery Comments:







DRILL STEM TEST REPORT

Prepared For: **Carmen Schmitt Inc**

PO Box 47
Great Bend, KS 67503-0047

ATTN: Brad Rine

Ziegelmeier #1-2

2-7s-32w Thomas,KS

Start Date: 2015.11.07 @ 11:50:15

End Date: 2015.11.07 @ 18:25:00

Job Ticket #: 45521 DST #: 2

Trilobite Testing, Inc
1515 Commerce Parkway Hays, KS 67601
ph: 785-625-4778 fax: 785-625-5620

Printed: 2015.11.12 @ 08:18:58



**TRILOBITE
TESTING, INC**

DRILL STEM TEST REPORT

Carmen Schmitt Inc
 PO Box 47
 Great Bend, KS 67503-0047
 ATTN: Brad Rine

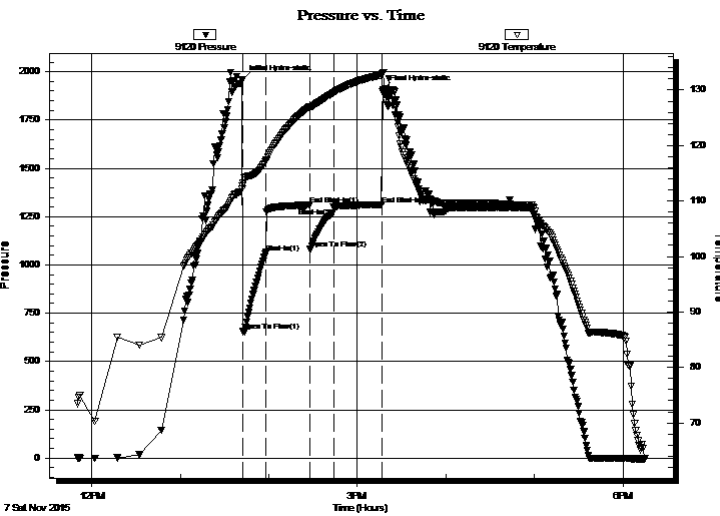
2-7s-32w Thomas,KS
Ziegelmeier #1-2
 Job Ticket: 45521 **DST#: 2**
 Test Start: 2015.11.07 @ 11:50:15

GENERAL INFORMATION:

Formation: **LKC C - D**
 Deviated: No Whipstock: ft (KB)
 Time Tool Opened: 13:42:30
 Time Test Ended: 18:25:00
 Interval: **3993.00 ft (KB) To 4050.00 ft (KB) (TVD)**
 Total Depth: 4050.00 ft (KB) (TVD)
 Hole Diameter: 7.88 inches Hole Condition: Fair
 Test Type: Conventional Bottom Hole (Reset)
 Tester: Shane McBride
 Unit No: 84
 Reference Elevations: 2999.00 ft (KB)
 2994.00 ft (CF)
 KB to GR/CF: 5.00 ft

Serial #: 9120 Outside
 Press@RunDepth: 1298.17 psig @ 3994.00 ft (KB) Capacity: 8000.00 psig
 Start Date: 2015.11.07 End Date: 2015.11.07 Last Calib.: 2015.11.07
 Start Time: 11:50:15 End Time: 18:15:00 Time On Btm: 2015.11.07 @ 13:42:00
 Time Off Btm: 2015.11.07 @ 15:17:30

TEST COMMENT: B.O.B. in 1 min
 No return
 B.O.B. in 1 min
 No return



PRESSURE SUMMARY

Time (Min.)	Pressure (psig)	Temp (deg F)	Annotation
0	1957.31	112.79	Initial Hydro-static
1	657.43	113.21	Open To Flow (1)
16	1064.52	117.27	Shut-In(1)
46	1309.97	126.98	End Shut-In(1)
46	1080.52	126.94	Open To Flow (2)
62	1298.17	129.50	Shut-In(2)
95	1310.82	132.69	End Shut-In(2)
96	1906.53	133.12	Final Hydro-static

Recovery

Length (ft)	Description	Volume (bbl)
120.00	(under circ sub) m c w 30m 70w	0.59
2400.00	w ater (reversed out) 100%w	33.67
126.00	m c w 25m 75w	1.77
95.00	w c m 50w 50m	1.33

* Recovery from multiple tests

Gas Rates

	Choke (inches)	Pressure (psig)	Gas Rate (Mcf/d)



**TRILOBITE
TESTING, INC**

DRILL STEM TEST REPORT

TOOL DIAGRAM

Carmen Schmitt Inc
 PO Box 47
 Great Bend, KS 67503-0047
 ATTN: Brad Rine

2-7s-32w Thomas,KS
Ziegelmeier #1-2
 Job Ticket: 45521 **DST#: 2**
 Test Start: 2015.11.07 @ 11:50:15

Tool Information

Drill Pipe:	Length: 3855.00 ft	Diameter: 3.80 inches	Volume: 54.08 bbl	Tool Weight: 2500.00 lb
Heavy Wt. Pipe:	Length: 0.00 ft	Diameter: 0.00 inches	Volume: 0.00 bbl	Weight set on Packer: 25000.00 lb
Drill Collar:	Length: 120.00 ft	Diameter: 2.25 inches	Volume: 0.59 bbl	Weight to Pull Loose: 90000.00 lb
			<u>Total Volume: 54.67 bbl</u>	Tool Chased 0.00 ft
Drill Pipe Above KB:	10.00 ft			String Weight: Initial 62000.00 lb
Depth to Top Packer:	3993.00 ft			Final 76000.00 lb
Depth to Bottom Packer:	ft			
Interval between Packers:	57.00 ft			
Tool Length:	85.00 ft			
Number of Packers:	2	Diameter: 6.75 inches		

Tool Comments:

Tool Description

Length (ft) Serial No. Position Depth (ft) Accum. Lengths

Change Over Sub	1.00			3966.00	
Shut In Tool	5.00			3971.00	
Hydraulic tool	5.00			3976.00	
Jars	5.00			3981.00	
Safety Joint	3.00			3984.00	
Packer	5.00			3989.00	28.00 Bottom Of Top Packer
Packer	4.00			3993.00	
Stubb	1.00			3994.00	
Recorder	0.00	9120	Outside	3994.00	
Recorder	0.00	8938	Inside	3994.00	
Perforations	17.00			4011.00	
Change Over Sub	1.00			4012.00	
Drill Pipe	32.00			4044.00	
Change Over Sub	1.00			4045.00	
Bullnose	5.00			4050.00	57.00 Bottom Packers & Anchor

Total Tool Length: 85.00



**TRILOBITE
TESTING, INC**

DRILL STEM TEST REPORT

FLUID SUMMARY

Carmen Schmitt Inc

2-7s-32w Thomas,KS

PO Box 47
Great Bend, KS 67503-0047

Ziegelmeier #1-2

Job Ticket: 45521

DST#: 2

ATTN: Brad Rine

Test Start: 2015.11.07 @ 11:50:15

Mud and Cushion Information

Mud Type: Gel Chem

Cushion Type:

Oil API:

0 deg API

Mud Weight: 9.00 lb/gal

Cushion Length:

ft

Water Salinity:

29500 ppm

Viscosity: 49.00 sec/qt

Cushion Volume:

bbbl

Water Loss: 6.36 in³

Gas Cushion Type:

Resistivity: 0.00 ohm.m

Gas Cushion Pressure:

psig

Salinity: 2000.00 ppm

Filter Cake: 1.00 inches

Recovery Information

Recovery Table

Length ft	Description	Volume bbbl
120.00	(under circ sub) m c w 30m 70w	0.590
2400.00	water (reversed out) 100%w	33.666
126.00	m c w 25m 75w	1.767
95.00	w c m 50w 50m	1.333

Total Length: 2741.00 ft Total Volume: 37.356 bbl

Num Fluid Samples: 0

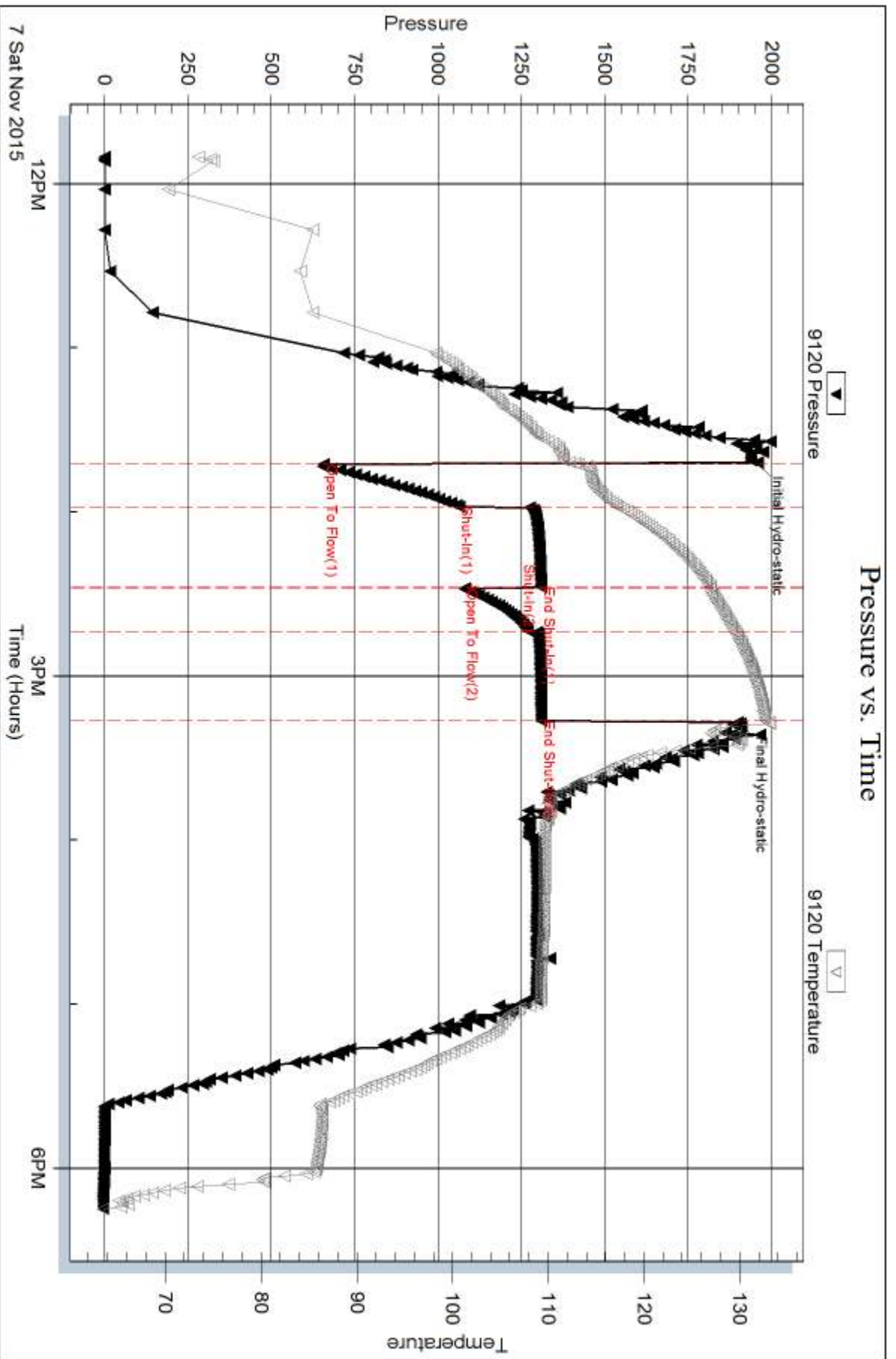
Num Gas Bombs: 0

Serial #:

Laboratory Name:

Laboratory Location:

Recovery Comments: rw .348 @ 54*f = 29,500 chlor



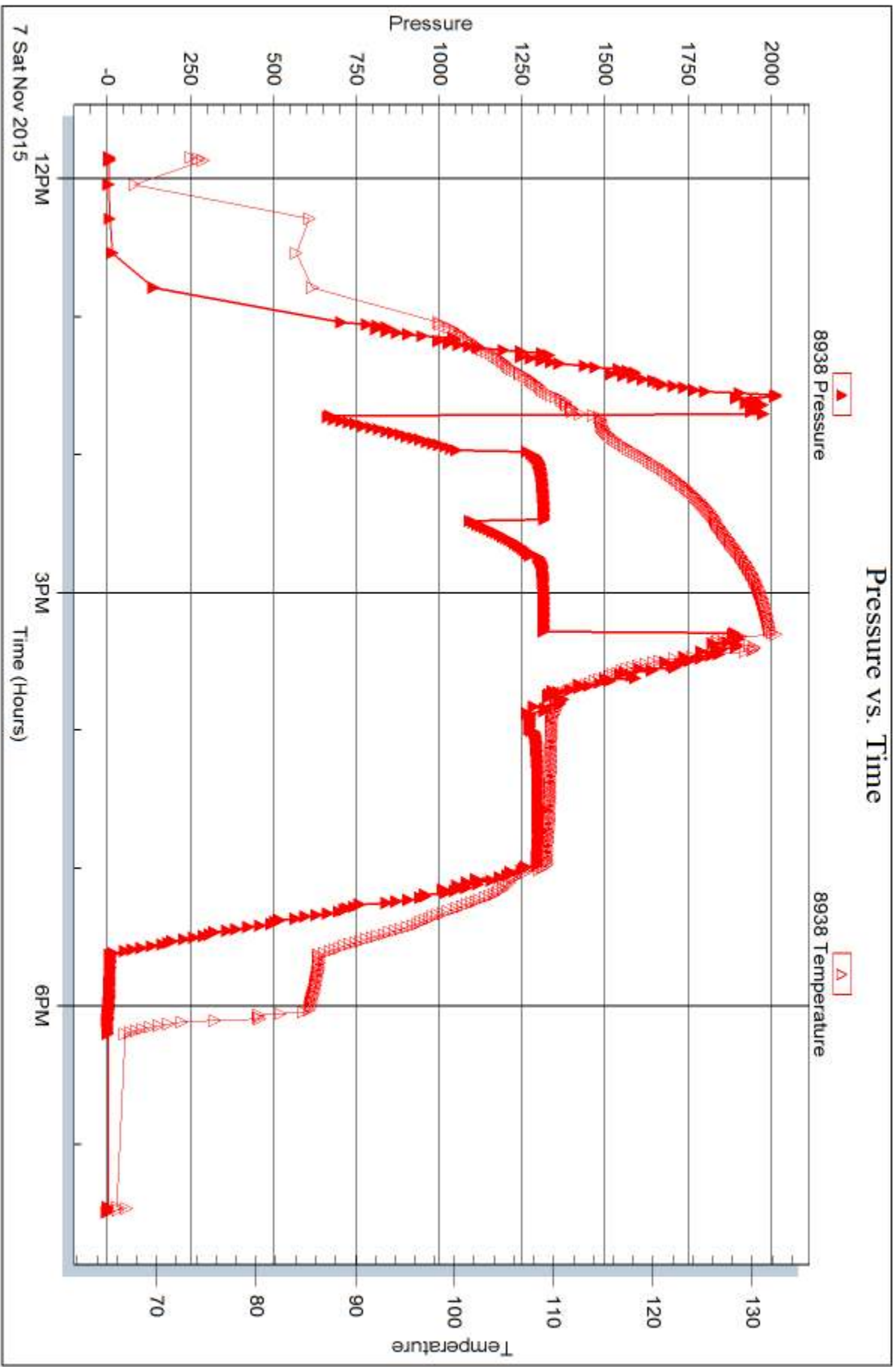
Serial #: 8938

Inside

Carmen Schmitt Inc

Ziegelmeier #1-2

DST Test Number: 2



Trikkbile Testing, Inc

Ref. No: 45521

Printed: 2015.11.12 @ 08:18:59



DRILL STEM TEST REPORT

Prepared For: **Carmen Schmitt Inc**

PO Box 47
Great Bend, KS 67503-0047

ATTN: Brad Rine

Ziegelmeier #1-2

2-7s-32w Thomas,KS

Start Date: 2015.11.08 @ 01:01:06

End Date: 2015.11.08 @ 06:32:06

Job Ticket #: 45524 DST #: 3

Trilobite Testing, Inc
1515 Commerce Parkway Hays, KS 67601
ph: 785-625-4778 fax: 785-625-5620

Printed: 2015.11.12 @ 08:18:34



TRILOBITE TESTING, INC

DRILL STEM TEST REPORT

Carmen Schmitt Inc
 PO Box 47
 Great Bend, KS 67503-0047
 ATTN: Brad Rine

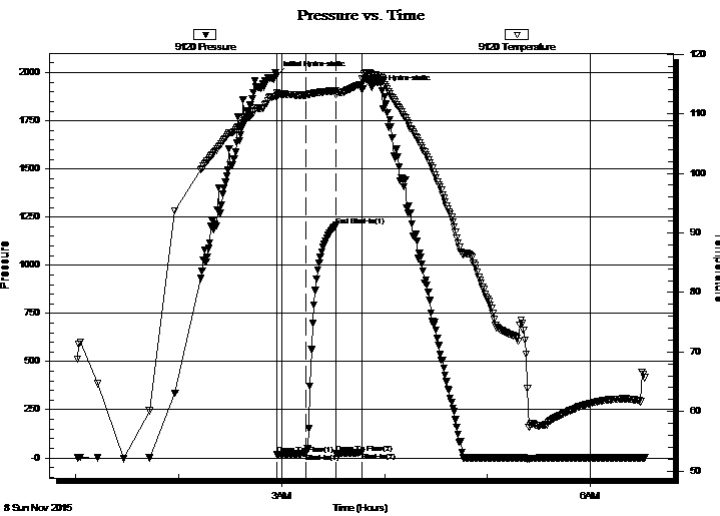
2-7s-32w Thomas,KS
Ziegelmeier #1-2
 Job Ticket: 45524 **DST#: 3**
 Test Start: 2015.11.08 @ 01:01:06

GENERAL INFORMATION:

Formation: **LKC E**
 Deviated: No Whipstock: ft (KB)
 Time Tool Opened: 02:57:21
 Time Test Ended: 06:32:06
Interval: 4047.00 ft (KB) To 4073.00 ft (KB) (TVD)
 Total Depth: 4073.00 ft (KB) (TVD)
 Hole Diameter: 7.88 inches Hole Condition: Fair
 Test Type: Conventional Bottom Hole (Reset)
 Tester: Shane McBride
 Unit No: 84
 Reference Elevations: 2999.00 ft (KB)
 2994.00 ft (CF)
 KB to GR/CF: 5.00 ft

Serial #: 9120 Outside
 Press@RunDepth: 22.08 psig @ 4048.00 ft (KB) Capacity: 8000.00 psig
 Start Date: 2015.11.08 End Date: 2015.11.08 Last Calib.: 2015.11.08
 Start Time: 01:01:06 End Time: 06:32:06 Time On Btm: 2015.11.08 @ 02:57:06
 Time Off Btm: 2015.11.08 @ 03:47:06

TEST COMMENT: Weak surface blow died in 7 min
 No return
 No blow pull tool after 15 min



PRESSURE SUMMARY

Time (Min.)	Pressure (psig)	Temp (deg F)	Annotation
0	1985.25	113.55	Initial Hydro-static
1	16.77	112.96	Open To Flow (1)
17	22.08	113.14	Shut-In(1)
35	1206.67	113.89	End Shut-In(1)
35	22.96	113.17	Open To Flow (2)
50	27.90	114.97	Shut-In(2)
50	1911.79	115.94	Final Hydro-static

Recovery

Length (ft)	Description	Volume (bbl)
1.00	mud 100% m	0.00

* Recovery from multiple tests

Gas Rates

Choke (inches)	Pressure (psig)	Gas Rate (Mcf/d)



**TRILOBITE
TESTING, INC**

DRILL STEM TEST REPORT

TOOL DIAGRAM

Carmen Schmitt Inc

2-7s-32w Thomas,KS

PO Box 47
Great Bend, KS 67503-0047

Ziegelmeier #1-2

Job Ticket: 45524

DST#: 3

ATTN: Brad Rine

Test Start: 2015.11.08 @ 01:01:06

Tool Information

Drill Pipe:	Length: 3920.00 ft	Diameter: 3.80 inches	Volume: 54.99 bbl	Tool Weight:	2500.00 lb
Heavy Wt. Pipe:	Length: 0.00 ft	Diameter: 0.00 inches	Volume: 0.00 bbl	Weight set on Packer:	25000.00 lb
Drill Collar:	Length: 120.00 ft	Diameter: 2.25 inches	Volume: 0.59 bbl	Weight to Pull Loose:	80000.00 lb
			<u>Total Volume: 55.58 bbl</u>	Tool Chased	0.00 ft
Drill Pipe Above KB:	21.00 ft			String Weight: Initial	62000.00 lb
Depth to Top Packer:	4047.00 ft			Final	62000.00 lb
Depth to Bottom Packer:	ft				
Interval between Packers:	26.00 ft				
Tool Length:	54.00 ft				
Number of Packers:	2	Diameter: 6.75 inches			

Tool Comments:

Tool Description	Length (ft)	Serial No.	Position	Depth (ft)	Accum. Lengths
------------------	-------------	------------	----------	------------	----------------

Change Over Sub	1.00			4020.00	
Shut In Tool	5.00			4025.00	
Hydraulic tool	5.00			4030.00	
Jars	5.00			4035.00	
Safety Joint	3.00			4038.00	
Packer	5.00			4043.00	28.00 Bottom Of Top Packer
Packer	4.00			4047.00	
Stubb	1.00			4048.00	
Recorder	0.00	9120	Outside	4048.00	
Recorder	0.00	8938	Inside	4048.00	
Perforations	20.00			4068.00	
Bullnose	5.00			4073.00	26.00 Bottom Packers & Anchor

Total Tool Length: 54.00



**TRILOBITE
TESTING, INC**

DRILL STEM TEST REPORT

FLUID SUMMARY

Carmen Schmitt Inc

2-7s-32w Thomas,KS

PO Box 47
Great Bend, KS 67503-0047

Ziegelmeier #1-2

Job Ticket: 45524

DST#: 3

ATTN: Brad Rine

Test Start: 2015.11.08 @ 01:01:06

Mud and Cushion Information

Mud Type: Gel Chem

Cushion Type:

Oil API:

0 deg API

Mud Weight: 9.00 lb/gal

Cushion Length:

ft

Water Salinity:

0 ppm

Viscosity: 49.00 sec/qt

Cushion Volume:

bbbl

Water Loss: 6.37 in³

Gas Cushion Type:

Resistivity: 0.00 ohm.m

Gas Cushion Pressure:

psig

Salinity: 2000.00 ppm

Filter Cake: 1.00 inches

Recovery Information

Recovery Table

Length ft	Description	Volume bbl
1.00	mud 100%m	0.005

Total Length: 1.00 ft Total Volume: 0.005 bbl

Num Fluid Samples: 0

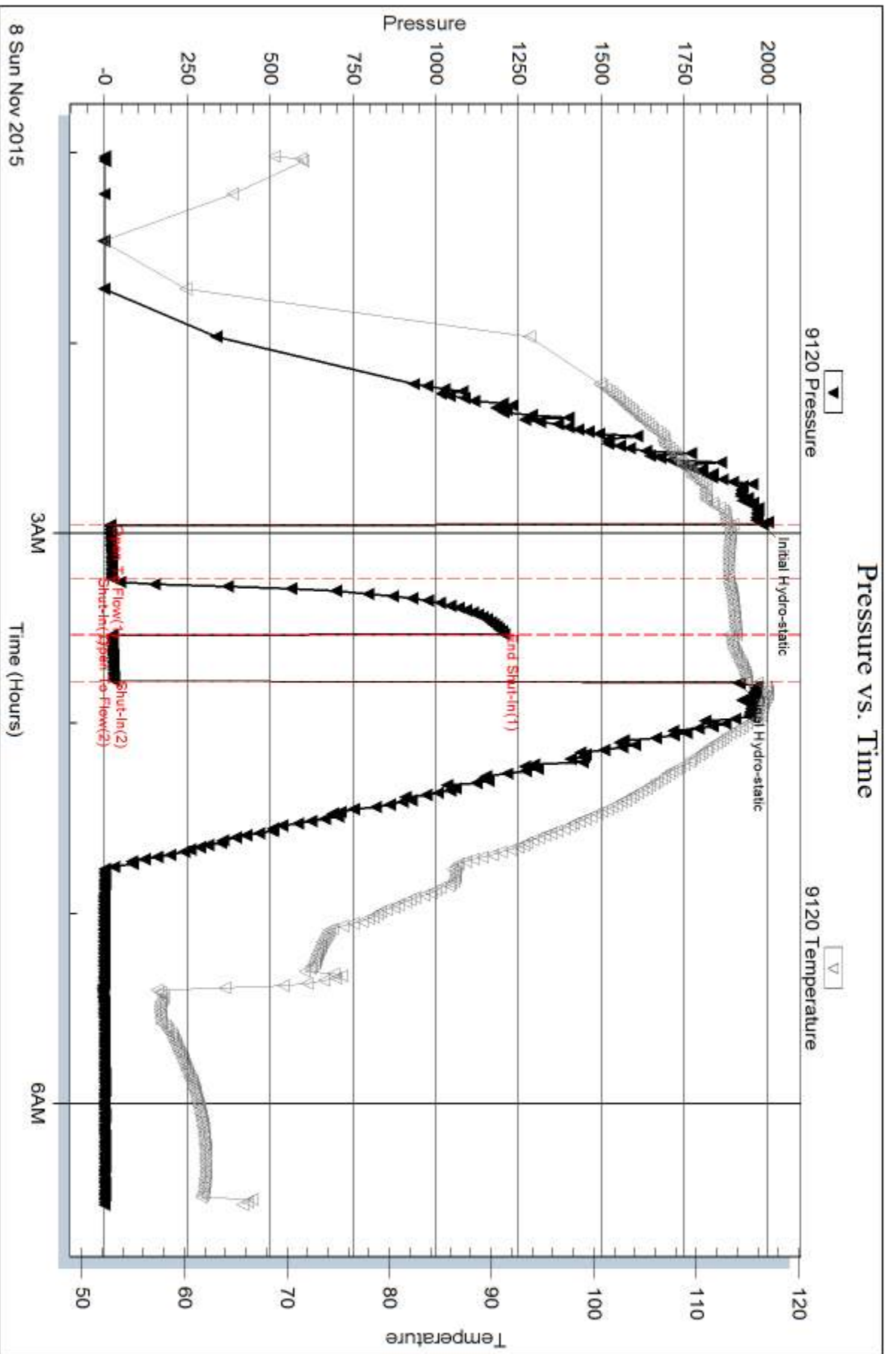
Num Gas Bombs: 0

Serial #:

Laboratory Name:

Laboratory Location:

Recovery Comments:





DRILL STEM TEST REPORT

Prepared For: **Carmen Schmitt Inc**

PO Box 47
Great Bend, KS 67503-0047

ATTN: Brad Rine

Ziegelmeier #1-2

2-7s-32w Thomas,KS

Start Date: 2015.11.08 @ 15:02:01

End Date: 2015.11.08 @ 19:50:01

Job Ticket #: 45524 DST #: 4

Trilobite Testing, Inc
1515 Commerce Parkway Hays, KS 67601
ph: 785-625-4778 fax: 785-625-5620

Printed: 2015.11.12 @ 08:18:11



**TRILOBITE
TESTING, INC**

DRILL STEM TEST REPORT

Carmen Schmitt Inc
 PO Box 47
 Great Bend, KS 67503-0047
 ATTN: Brad Rine

2-7s-32w Thomas,KS
Ziegelmeier #1-2
 Job Ticket: 45524 **DST#: 4**
 Test Start: 2015.11.08 @ 15:02:01

GENERAL INFORMATION:

Formation: **LKC G - I**
 Deviated: No Whipstock: ft (KB)
 Time Tool Opened: 16:53:31
 Time Test Ended: 19:50:01
 Interval: **4087.00 ft (KB) To 4144.00 ft (KB) (TVD)**
 Total Depth: 4144.00 ft (KB) (TVD)
 Hole Diameter: 7.88 inches Hole Condition: Fair
 Test Type: Conventional Bottom Hole (Reset)
 Tester: Shane McBride
 Unit No: 84
 Reference Elevations: 2999.00 ft (KB)
 2994.00 ft (CF)
 KB to GR/CF: 5.00 ft

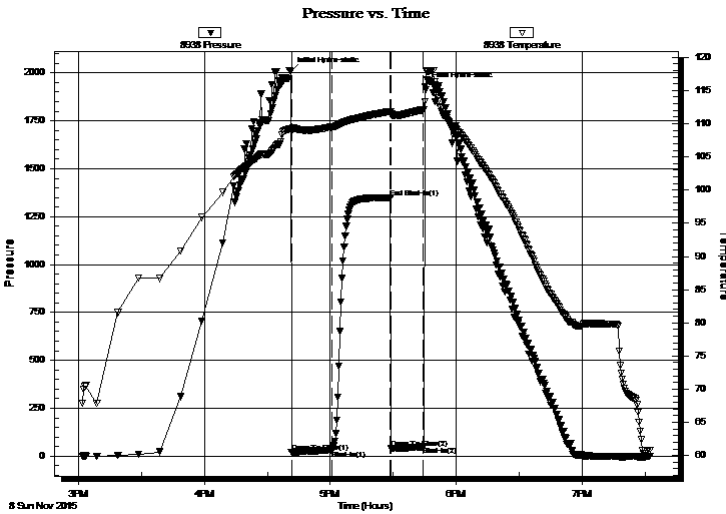
Serial #: 8938

Inside

Press@RunDepth: 32.57 psig @ 4088.00 ft (KB) Capacity: 8000.00 psig
 Start Date: 2015.11.08 End Date: 2015.11.08 Last Calib.: 2015.11.08
 Start Time: 15:02:01 End Time: 19:32:01 Time On Btm: 2015.11.08 @ 16:41:01
 Time Off Btm: 2015.11.08 @ 17:45:01

TEST COMMENT: 1/4" died back to surface blow
 No return
 surface blow after 3 min , pull tool after 15 min.

PRESSURE SUMMARY



Time (Min.)	Pressure (psig)	Temp (deg F)	Annotation
0	2009.17	109.26	Initial Hydro-static
1	20.40	108.85	Open To Flow (1)
20	32.57	109.49	Shut-In(1)
48	1350.03	111.85	End Shut-In(1)
48	39.87	111.41	Open To Flow (2)
64	49.57	112.13	Shut-In(2)
64	1928.24	113.35	Final Hydro-static

Recovery

Length (ft)	Description	Volume (bbl)
60.00	mud w/oil spots 100%m	0.30
0.00	2" free oil on top	0.00

* Recovery from multiple tests

Gas Rates

Choke (inches)	Pressure (psig)	Gas Rate (Mcf/d)



**TRILOBITE
TESTING, INC**

DRILL STEM TEST REPORT

TOOL DIAGRAM

Carmen Schmitt Inc

2-7s-32w Thomas,KS

PO Box 47
Great Bend, KS 67503-0047

Ziegelmeier #1-2

Job Ticket: 45524

DST#: 4

ATTN: Brad Rine

Test Start: 2015.11.08 @ 15:02:01

Tool Information

Drill Pipe:	Length: 3951.00 ft	Diameter: 3.80 inches	Volume: 55.42 bbl	Tool Weight: 2500.00 lb
Heavy Wt. Pipe:	Length: 0.00 ft	Diameter: 0.00 inches	Volume: 0.00 bbl	Weight set on Packer: 25000.00 lb
Drill Collar:	Length: 120.00 ft	Diameter: 2.25 inches	Volume: 0.59 bbl	Weight to Pull Loose: 80000.00 lb
			<u>Total Volume: 56.01 bbl</u>	Tool Chased 0.00 ft
Drill Pipe Above KB:	12.00 ft			String Weight: Initial 63000.00 lb
Depth to Top Packer:	4087.00 ft			Final 63000.00 lb
Depth to Bottom Packer:	ft			
Interval between Packers:	57.00 ft			
Tool Length:	85.00 ft			
Number of Packers:	2	Diameter: 6.75 inches		

Tool Comments:

Tool Description

Tool Description	Length (ft)	Serial No.	Position	Depth (ft)	Accum. Lengths
Change Over Sub	1.00			4060.00	
Shut In Tool	5.00			4065.00	
Hydraulic tool	5.00			4070.00	
Jars	5.00			4075.00	
Safety Joint	3.00			4078.00	
Packer	5.00			4083.00	28.00 Bottom Of Top Packer
Packer	4.00			4087.00	
Stubb	1.00			4088.00	
Recorder	0.00	9120	Outside	4088.00	
Recorder	0.00	8938	Inside	4088.00	
Perforations	17.00			4105.00	
Change Over Sub	1.00			4106.00	
Drill Pipe	32.00			4138.00	
Change Over Sub	1.00			4139.00	
Bullnose	5.00			4144.00	57.00 Bottom Packers & Anchor

Total Tool Length: 85.00



**TRILOBITE
TESTING, INC**

DRILL STEM TEST REPORT

FLUID SUMMARY

Carmen Schmitt Inc

2-7s-32w Thomas,KS

PO Box 47
Great Bend, KS 67503-0047

Ziegelmeier #1-2

Job Ticket: 45524

DST#: 4

ATTN: Brad Rine

Test Start: 2015.11.08 @ 15:02:01

Mud and Cushion Information

Mud Type: Gel Chem

Cushion Type:

Oil API:

0 deg API

Mud Weight: 9.00 lb/gal

Cushion Length:

ft

Water Salinity:

0 ppm

Viscosity: 49.00 sec/qt

Cushion Volume:

bbbl

Water Loss: 6.37 in³

Gas Cushion Type:

Resistivity: 0.00 ohm.m

Gas Cushion Pressure:

psig

Salinity: 2000.00 ppm

Filter Cake: 1.00 inches

Recovery Information

Recovery Table

Length ft	Description	Volume bbl
60.00	mud w/oil spots 100%m	0.295
0.00	2" free oil on top	0.000

Total Length: 60.00 ft Total Volume: 0.295 bbl

Num Fluid Samples: 0

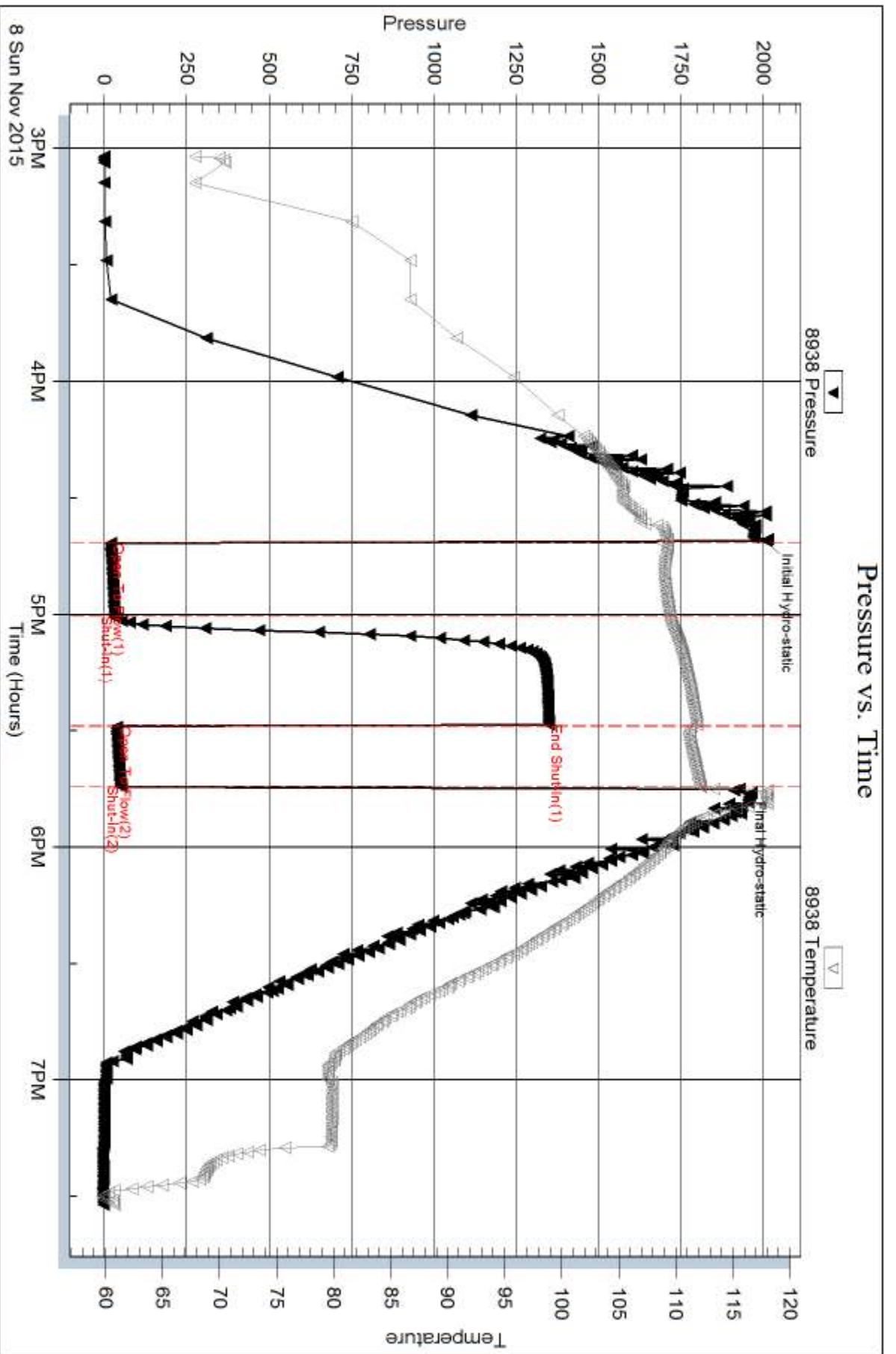
Num Gas Bombs: 0

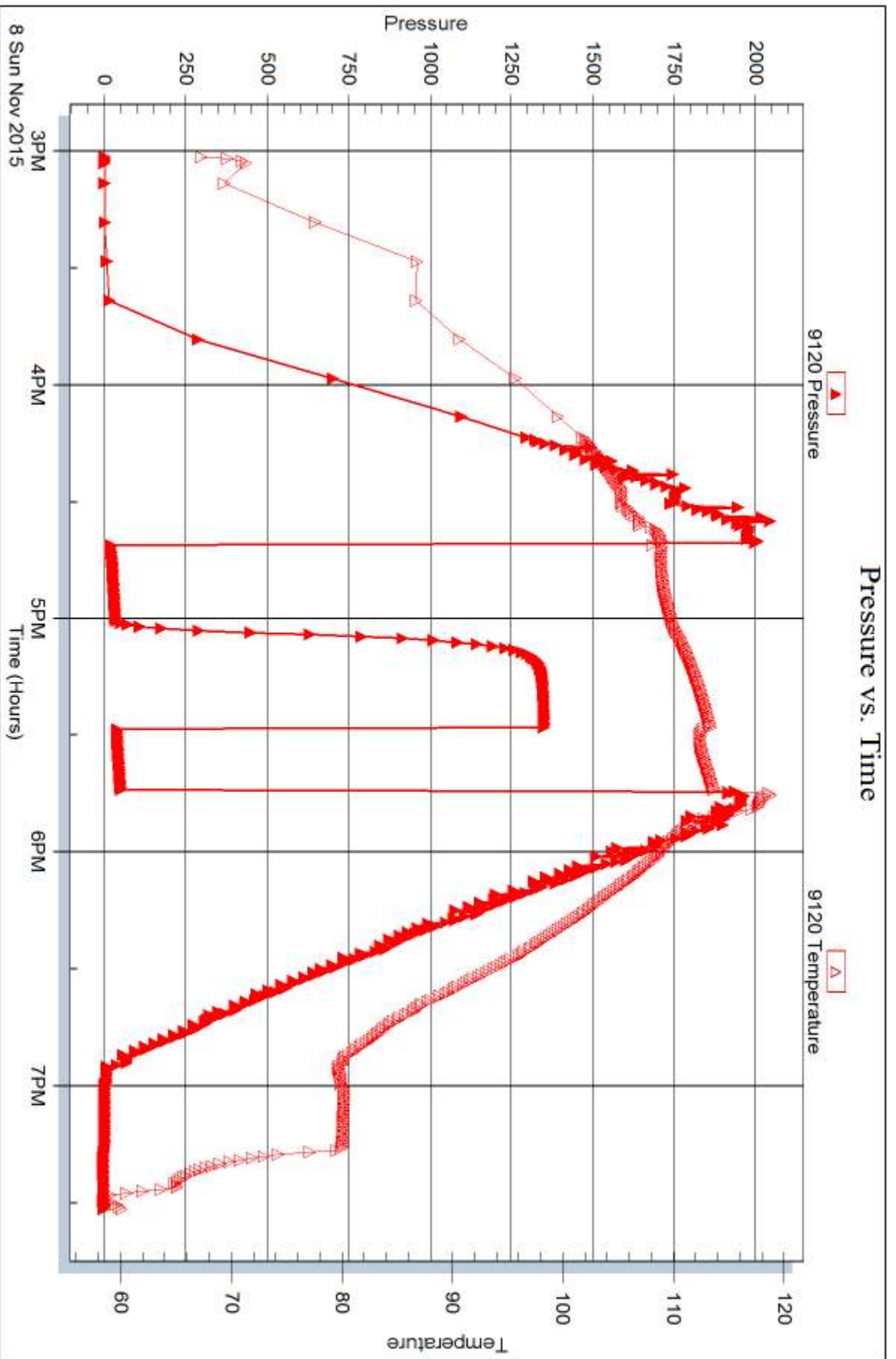
Serial #:

Laboratory Name:

Laboratory Location:

Recovery Comments:







DRILL STEM TEST REPORT

Prepared For: **Carmen Schmitt Inc**

PO Box 47
Great Bend, KS 67503-0047

ATTN: Brad Rine

Ziegelmeier #1-2

2-7s-32w Thomas,KS

Start Date: 2015.11.09 @ 02:11:01

End Date: 2015.11.09 @ 10:31:01

Job Ticket #: 45525 DST #: 5

Trilobite Testing, Inc
1515 Commerce Parkway Hays, KS 67601
ph: 785-625-4778 fax: 785-625-5620

Printed: 2015.11.12 @ 08:17:47



TRILOBITE TESTING, INC

DRILL STEM TEST REPORT

Carmen Schmitt Inc
 PO Box 47
 Great Bend, KS 67503-0047
 ATTN: Brad Rine

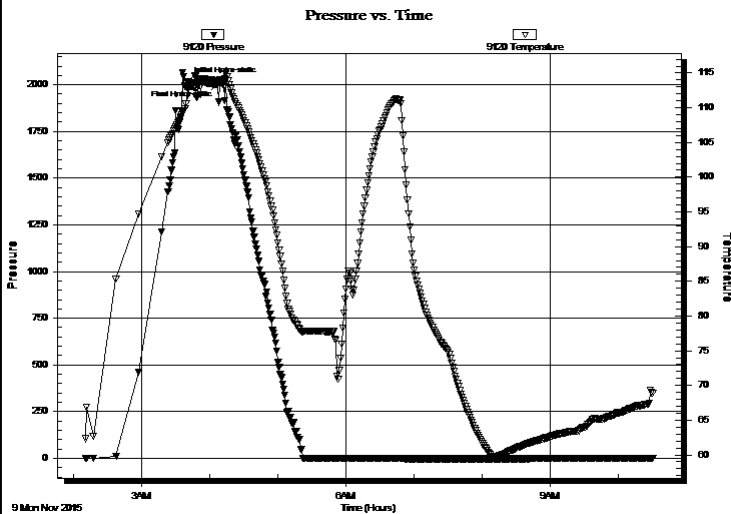
2-7s-32w Thomas,KS
Ziegelmeier #1-2
 Job Ticket: 45525 **DST#: 5**
 Test Start: 2015.11.09 @ 02:11:01

GENERAL INFORMATION:

Formation: **LKC J**
 Deviated: No Whipstock: ft (KB)
 Time Tool Opened: 03:45:00
 Time Test Ended: 10:31:01
 Interval: **4137.00 ft (KB) To 4167.00 ft (KB) (TVD)**
 Total Depth: 4167.00 ft (KB) (TVD)
 Hole Diameter: 7.88 inches Hole Condition: Fair
 Test Type: Conventional Bottom Hole (Reset)
 Tester: Shane McBride
 Unit No: 84
 Reference Elevations: 2999.00 ft (KB)
 2994.00 ft (CF)
 KB to GR/CF: 5.00 ft

Serial #: 9120 Outside
 Press@RunDepth: psig @ 4138.00 ft (KB) Capacity: 8000.00 psig
 Start Date: 2015.11.09 End Date: 2015.11.09 Last Calib.: 2015.11.09
 Start Time: 02:11:01 End Time: 10:31:01 Time On Btm: 2015.11.09 @ 03:40:31
 Time Off Btm: 2015.11.09 @ 04:08:46

TEST COMMENT: Packer Failuer @ open , reset failed again pull tool



PRESSURE SUMMARY

Time (Min.)	Pressure (psig)	Temp (deg F)	Annotation
0	1717.09	111.71	Initial Hydro-static
29	1212.50	113.88	Final Hydro-static

Recovery

Length (ft)	Description	Volume (bbl)
390.00	mud 100%m	4.38

* Recovery from multiple tests

Gas Rates

Choke (inches)	Pressure (psig)	Gas Rate (Mcf/d)



**TRILOBITE
TESTING, INC**

DRILL STEM TEST REPORT

TOOL DIAGRAM

Carmen Schmitt Inc
 PO Box 47
 Great Bend, KS 67503-0047
 ATTN: Brad Rine

2-7s-32w Thomas,KS
Ziegelmeier #1-2
 Job Ticket: 45525 **DST#: 5**
 Test Start: 2015.11.09 @ 02:11:01

Tool Information

Drill Pipe:	Length: 4014.00 ft	Diameter: 3.80 inches	Volume: 56.31 bbl	Tool Weight: 2500.00 lb
Heavy Wt. Pipe:	Length: 0.00 ft	Diameter: 0.00 inches	Volume: 0.00 bbl	Weight set on Packer: 25000.00 lb
Drill Collar:	Length: 120.00 ft	Diameter: 2.25 inches	Volume: 0.59 bbl	Weight to Pull Loose: 90000.00 lb
			<u>Total Volume: 56.90 bbl</u>	Tool Chased 0.00 ft
Drill Pipe Above KB:	25.00 ft			String Weight: Initial 63000.00 lb
Depth to Top Packer:	4137.00 ft			Final 68000.00 lb
Depth to Bottom Packer:	ft			
Interval between Packers:	30.00 ft			
Tool Length:	58.00 ft			
Number of Packers:	2	Diameter: 6.75 inches		

Tool Comments:

Tool Description	Length (ft)	Serial No.	Position	Depth (ft)	Accum. Lengths
-------------------------	--------------------	-------------------	-----------------	-------------------	-----------------------

Change Over Sub	1.00			4110.00	
Shut In Tool	5.00			4115.00	
Hydraulic tool	5.00			4120.00	
Jars	5.00			4125.00	
Safety Joint	3.00			4128.00	
Packer	5.00			4133.00	28.00 Bottom Of Top Packer
Packer	4.00			4137.00	
Stubb	1.00			4138.00	
Recorder	0.00	9120	Outside	4138.00	
Recorder	0.00	8938	Inside	4138.00	
Perforations	24.00			4162.00	
Bullnose	5.00			4167.00	30.00 Bottom Packers & Anchor

Total Tool Length: 58.00



**TRILOBITE
TESTING, INC**

DRILL STEM TEST REPORT

FLUID SUMMARY

Carmen Schmitt Inc

2-7s-32w Thomas,KS

PO Box 47
Great Bend, KS 67503-0047

Ziegelmeier #1-2

Job Ticket: 45525

DST#: 5

ATTN: Brad Rine

Test Start: 2015.11.09 @ 02:11:01

Mud and Cushion Information

Mud Type: Gel Chem

Cushion Type:

Oil API:

0 deg API

Mud Weight: 9.00 lb/gal

Cushion Length:

ft

Water Salinity:

0 ppm

Viscosity: 49.00 sec/qt

Cushion Volume:

bbbl

Water Loss: 6.38 in³

Gas Cushion Type:

Resistivity: 0.00 ohm.m

Gas Cushion Pressure:

psig

Salinity: 2000.00 ppm

Filter Cake: 1.00 inches

Recovery Information

Recovery Table

Length ft	Description	Volume bbl
390.00	mud 100%m	4.378

Total Length: 390.00 ft Total Volume: 4.378 bbl

Num Fluid Samples: 0

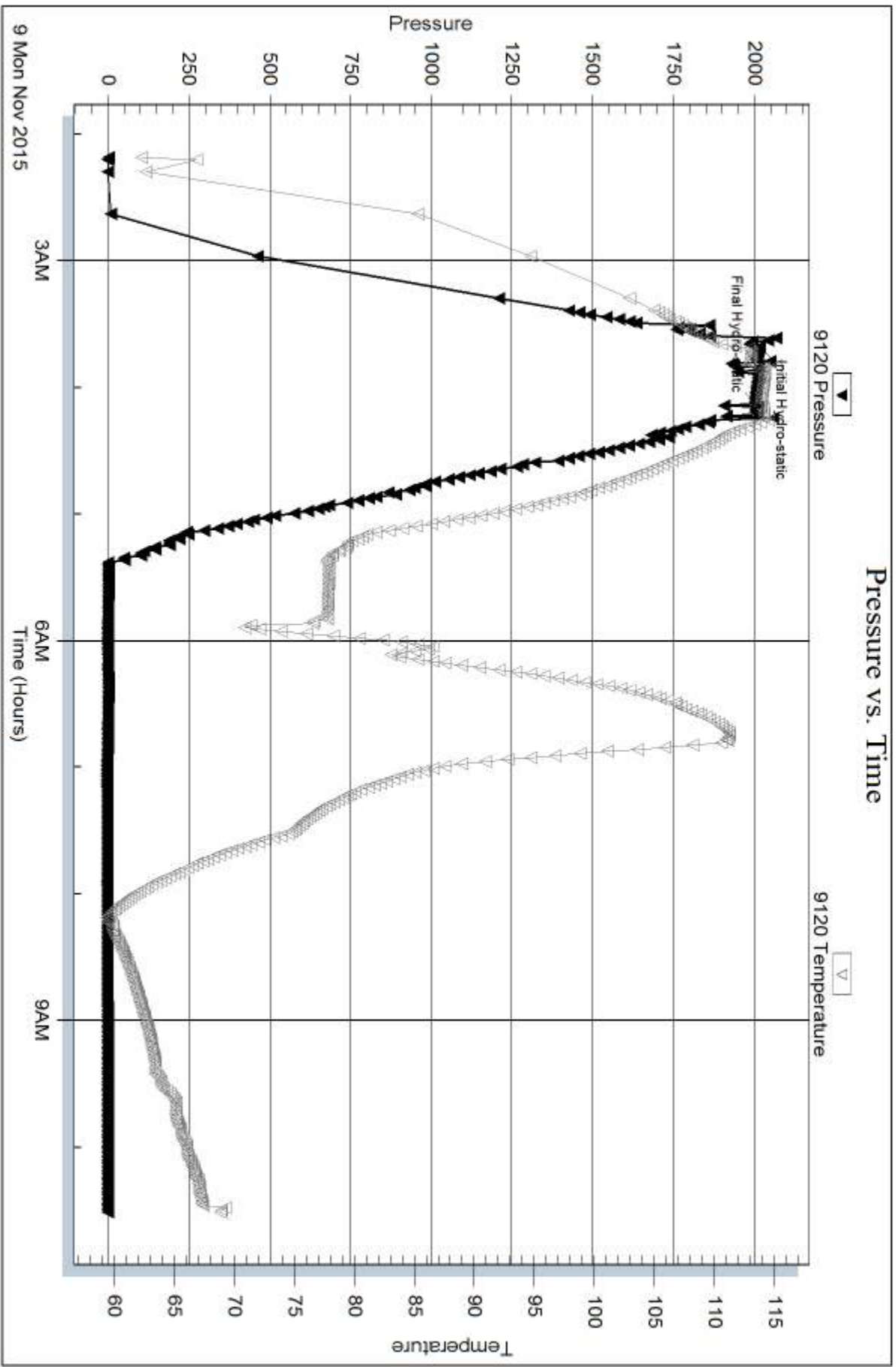
Num Gas Bombs: 0

Serial #:

Laboratory Name:

Laboratory Location:

Recovery Comments:



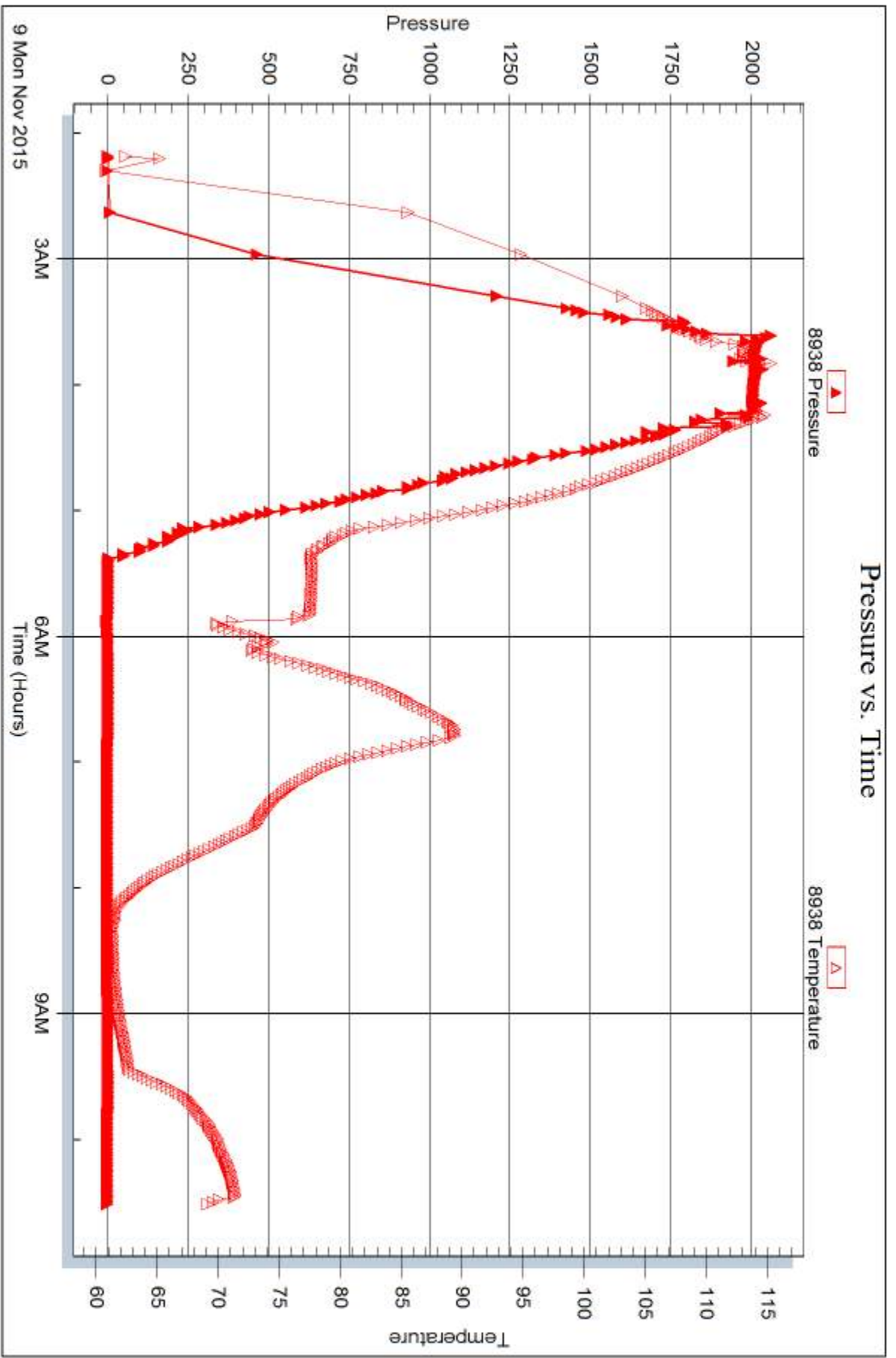
Serial #: 8938

Inside

Carmen Schmitt Inc

Ziegelreier #1-2

DST Test Number: 5



Triobite Testing, Inc

Ref. No: 45525

Printed: 2015.11.12 @ 08:17:49



DRILL STEM TEST REPORT

Prepared For: **Carmen Schmitt Inc**

PO Box 47
Great Bend, KS 67503-0047

ATTN: Brad Rine

Ziegelmeier #1-2

2-7s-32w Thomas,KS

Start Date: 2015.11.09 @ 10:48:00

End Date: 2015.11.09 @ 17:10:15

Job Ticket #: 48262 DST #: 6

Trilobite Testing, Inc
1515 Commerce Parkway Hays, KS 67601
ph: 785-625-4778 fax: 785-625-5620

Printed: 2015.11.12 @ 08:17:20



**TRILOBITE
TESTING, INC**

DRILL STEM TEST REPORT

Carmen Schmitt Inc
 PO Box 47
 Great Bend, KS 67503-0047
 ATTN: Brad Rine

2-7s-32w Thomas,KS
Ziegelmeier #1-2
 Job Ticket: 48262 **DST#: 6**
 Test Start: 2015.11.09 @ 10:48:00

GENERAL INFORMATION:

Formation: **LKC I-J**
 Deviated: No Whipstock: ft (KB)
 Time Tool Opened: 13:05:00
 Time Test Ended: 17:10:15
 Interval: **4115.00 ft (KB) To 4167.00 ft (KB) (TVD)**
 Total Depth: 4167.00 ft (KB) (TVD)
 Hole Diameter: 7.88 inches Hole Condition: Fair
 Test Type: Conventional Bottom Hole (Reset)
 Tester: Shane McBride
 Unit No: 84
 Reference Elevations: 2999.00 ft (KB)
 2994.00 ft (CF)
 KB to GR/CF: 5.00 ft

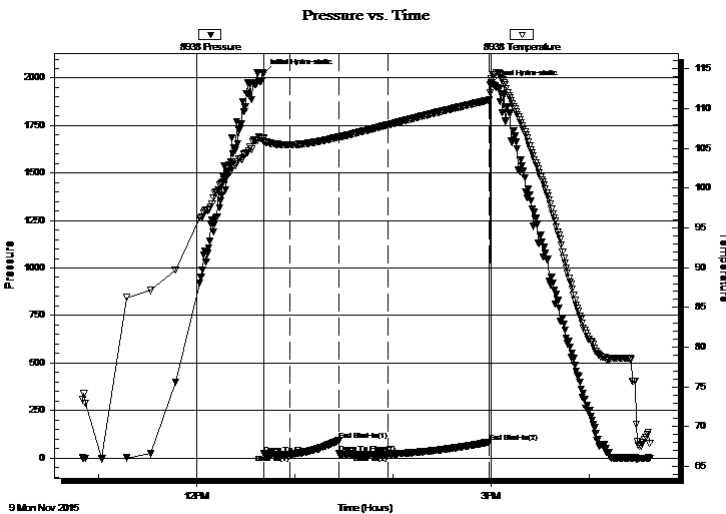
Serial #: 8938

Inside

Press@RunDepth: 20.24 psig @ 4116.00 ft (KB) Capacity: 8000.00 psig
 Start Date: 2015.11.09 End Date: 2015.11.09 Last Calib.: 2015.11.09
 Start Time: 10:50:00 End Time: 16:37:15 Time On Btm: 2015.11.09 @ 12:40:45
 Time Off Btm: 2015.11.09 @ 14:59:30

TEST COMMENT: 1/4" blow
 No return
 Surface blow in 5 min.
 No return

PRESSURE SUMMARY



Time (Min.)	Pressure (psig)	Temp (deg F)	Annotation
0	2024.06	106.27	Initial Hydro-static
1	21.63	105.79	Open To Flow (1)
16	20.29	105.43	Shut-In(1)
46	90.87	106.40	End Shut-In(1)
46	21.75	106.38	Open To Flow (2)
77	20.24	107.95	Shut-In(2)
139	84.09	111.07	End Shut-In(2)
139	1963.03	111.94	Final Hydro-static

Recovery

Length (ft)	Description	Volume (bbl)
3.00	mud 100% m	0.01

* Recovery from multiple tests

Gas Rates

Choke (inches)	Pressure (psig)	Gas Rate (Mcf/d)



**TRILOBITE
TESTING, INC**

DRILL STEM TEST REPORT

TOOL DIAGRAM

Carmen Schmitt Inc

2-7s-32w Thomas,KS

PO Box 47
Great Bend, KS 67503-0047

Ziegelmeier #1-2

Job Ticket: 48262

DST#: 6

ATTN: Brad Rine

Test Start: 2015.11.09 @ 10:48:00

Tool Information

Drill Pipe:	Length: 3982.00 ft	Diameter: 3.80 inches	Volume: 55.86 bbl	Tool Weight: 2500.00 lb
Heavy Wt. Pipe:	Length: 0.00 ft	Diameter: 0.00 inches	Volume: 0.00 bbl	Weight set on Packer: 25000.00 lb
Drill Collar:	Length: 120.00 ft	Diameter: 2.25 inches	Volume: 0.59 bbl	Weight to Pull Loose: 85000.00 lb
			<u>Total Volume: 56.45 bbl</u>	Tool Chased 0.00 ft
Drill Pipe Above KB:	15.00 ft			String Weight: Initial 64000.00 lb
Depth to Top Packer:	4115.00 ft			Final 64000.00 lb
Depth to Bottom Packer:	ft			
Interval between Packers:	52.00 ft			
Tool Length:	80.00 ft			
Number of Packers:	2	Diameter: 6.75 inches		

Tool Comments:

Tool Description

Length (ft) Serial No. Position Depth (ft) Accum. Lengths

Tool Description	Length (ft)	Serial No.	Position	Depth (ft)	Accum. Lengths
Change Over Sub	1.00			4088.00	
Shut In Tool	5.00			4093.00	
Hydraulic tool	5.00			4098.00	
Jars	5.00			4103.00	
Safety Joint	3.00			4106.00	
Packer	5.00			4111.00	28.00 Bottom Of Top Packer
Packer	4.00			4115.00	
Stubb	1.00			4116.00	
Recorder	0.00	9120	Outside	4116.00	
Recorder	0.00	8938	Inside	4116.00	
Perforations	12.00			4128.00	
Change Over Sub	1.00			4129.00	
Drill Pipe	32.00			4161.00	
Change Over Sub	1.00			4162.00	
Bullnose	5.00			4167.00	52.00 Bottom Packers & Anchor

Total Tool Length: 80.00



**TRILOBITE
TESTING, INC**

DRILL STEM TEST REPORT

FLUID SUMMARY

Carmen Schmitt Inc

2-7s-32w Thomas,KS

PO Box 47
Great Bend, KS 67503-0047

Ziegelmeier #1-2

Job Ticket: 48262

DST#: 6

ATTN: Brad Rine

Test Start: 2015.11.09 @ 10:48:00

Mud and Cushion Information

Mud Type: Gel Chem

Cushion Type:

Oil API:

0 deg API

Mud Weight: 9.00 lb/gal

Cushion Length:

ft

Water Salinity:

0 ppm

Viscosity: 48.00 sec/qt

Cushion Volume:

bbbl

Water Loss: 7.18 in³

Gas Cushion Type:

Resistivity: 0.00 ohm.m

Gas Cushion Pressure:

psig

Salinity: 2500.00 ppm

Filter Cake: 1.00 inches

Recovery Information

Recovery Table

Length ft	Description	Volume bbl
3.00	mud 100%m	0.015

Total Length: 3.00 ft Total Volume: 0.015 bbl

Num Fluid Samples: 0

Num Gas Bombs: 0

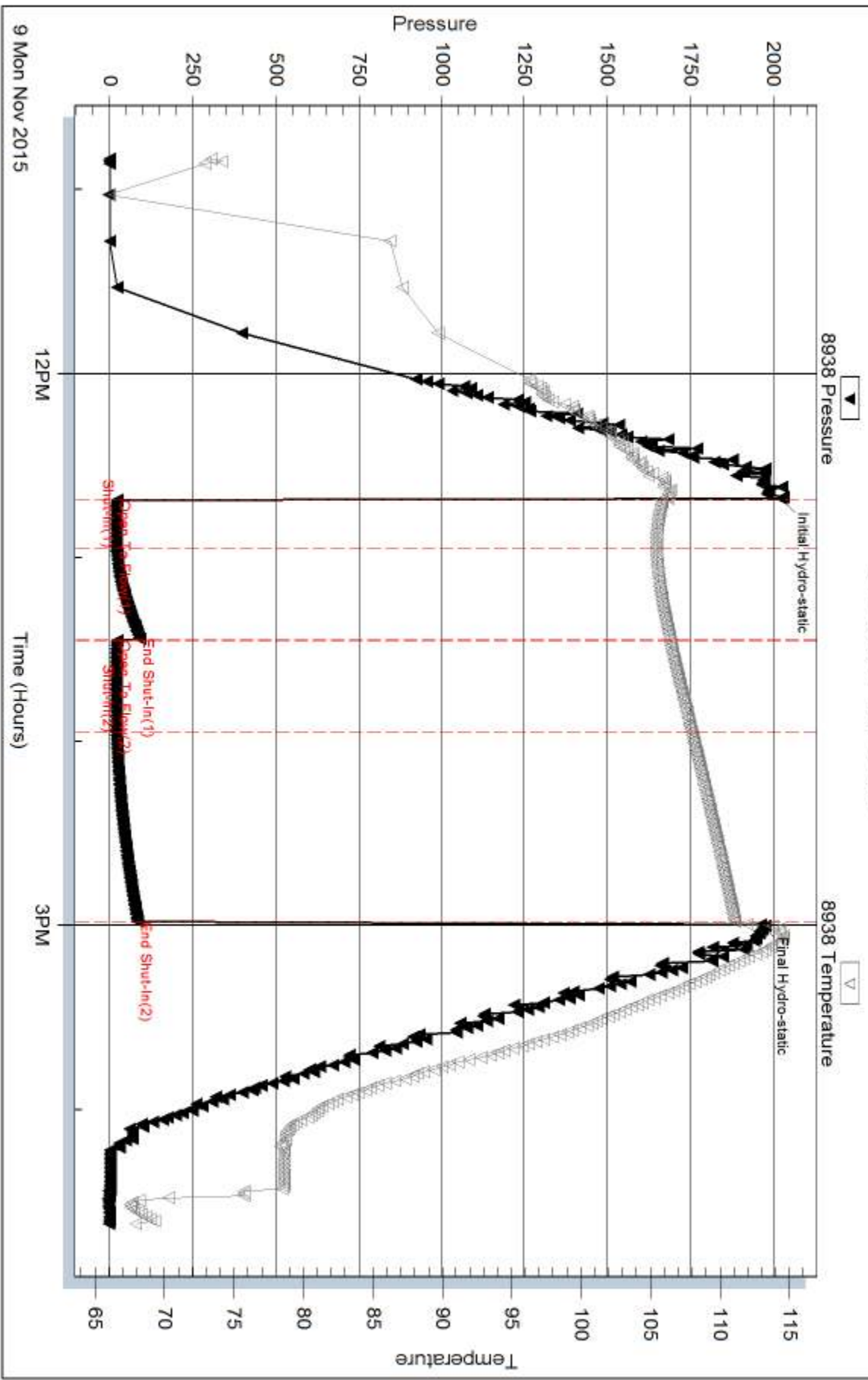
Serial #:

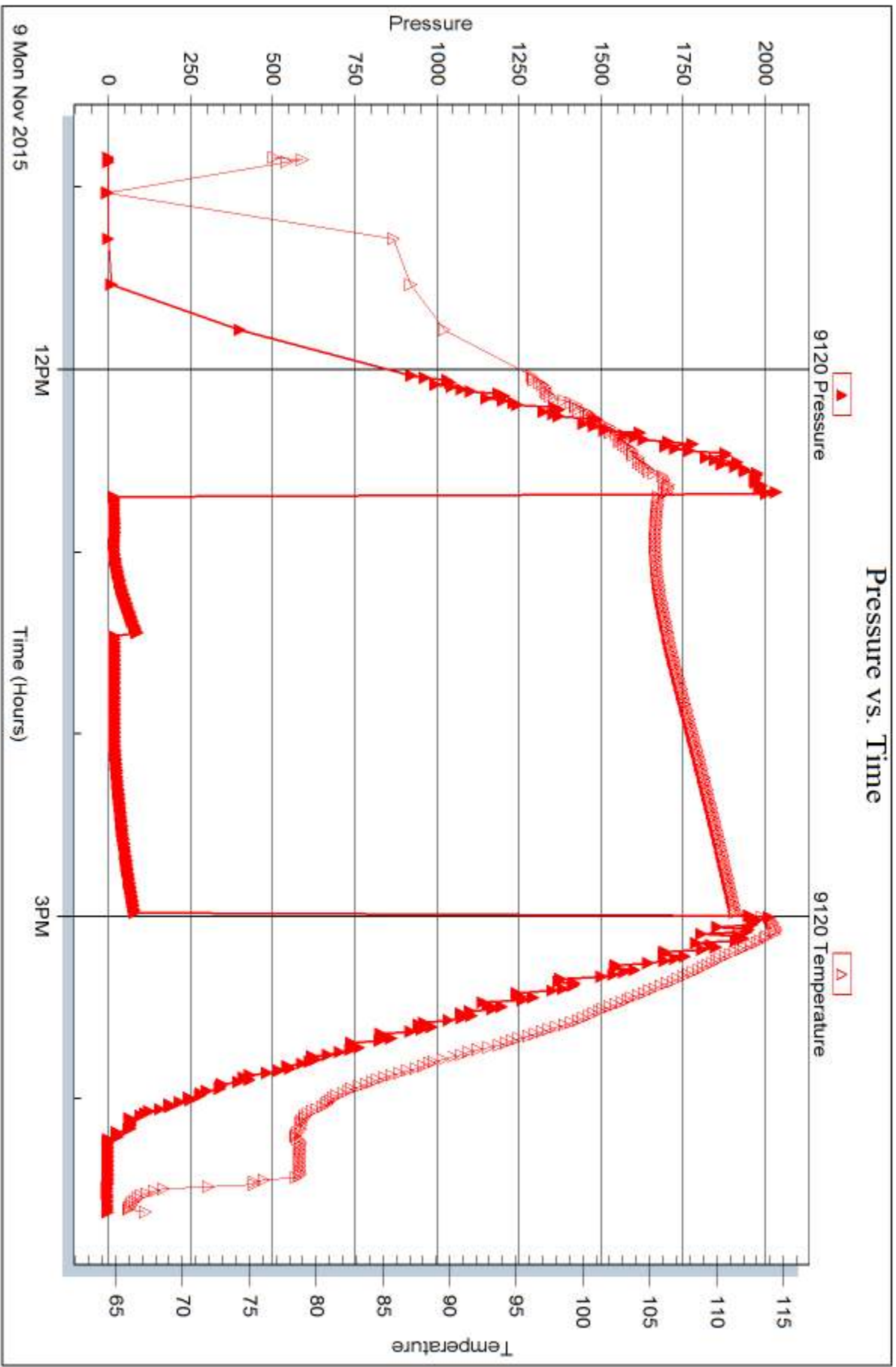
Laboratory Name:

Laboratory Location:

Recovery Comments:

Pressure vs. Time







DRILL STEM TEST REPORT

Prepared For: **Carmen Schmitt Inc**

PO Box 47
Great Bend, KS 67503-0047

ATTN: Brad Rine

Ziegelmeier #1-2

2-7s-32w Thomas,KS

Start Date: 2015.11.10 @ 15:05:19

End Date: 2015.11.10 @ 18:40:19

Job Ticket #: 48263 DST #: 7

Trilobite Testing, Inc
1515 Commerce Parkway Hays, KS 67601
ph: 785-625-4778 fax: 785-625-5620

Printed: 2015.11.12 @ 08:15:45



TRILOBITE TESTING, INC

DRILL STEM TEST REPORT

Carmen Schmitt Inc
 PO Box 47
 Great Bend, KS 67503-0047
 ATTN: Brad Rine

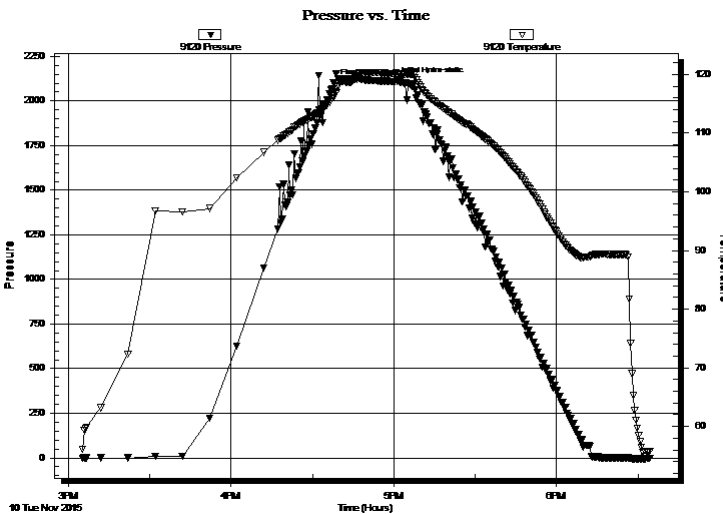
2-7s-32w Thomas,KS
Ziegelmeier #1-2
 Job Ticket: 48263 **DST#: 7**
 Test Start: 2015.11.10 @ 15:05:19

GENERAL INFORMATION:

Formation: **Pawnee - Ft Scott**
 Deviated: No Whipstock: ft (KB)
 Time Tool Opened: 16:48:00
 Time Test Ended: 18:40:19
 Interval: **4310.00 ft (KB) To 4430.00 ft (KB) (TVD)**
 Total Depth: 4430.00 ft (KB) (TVD)
 Hole Diameter: 7.88 inches Hole Condition: Fair
 Test Type: Conventional Bottom Hole (Reset)
 Tester: Shane McBride
 Unit No: 84
 Reference Elevations: 2999.00 ft (KB)
 2994.00 ft (CF)
 KB to GR/CF: 5.00 ft

Serial #: 9120 Outside
 Press@RunDepth: psig @ 4311.00 ft (KB) Capacity: 8000.00 psig
 Start Date: 2015.11.10 End Date: 2015.11.10 Last Calib.: 2015.11.10
 Start Time: 15:05:19 End Time: 18:34:19 Time On Btm: 2015.11.10 @ 17:00:19
 Time Off Btm: 2015.11.10 @ 17:05:19

TEST COMMENT: Packers failed @ open , reset failed again pull tool



PRESSURE SUMMARY

Time (Min.)	Pressure (psig)	Temp (deg F)	Annotation
0	2110.53	120.15	Initial Hydro-static
5	2097.87	120.01	Final Hydro-static

Recovery

Length (ft)	Description	Volume (bbl)
150.00	mud 100%m	1.01

* Recovery from multiple tests

Gas Rates

Choke (inches)	Pressure (psig)	Gas Rate (Mcf/d)



**TRILOBITE
TESTING, INC**

DRILL STEM TEST REPORT

TOOL DIAGRAM

Carmen Schmitt Inc

2-7s-32w Thomas,KS

PO Box 47
Great Bend, KS 67503-0047

Ziegelmeier #1-2

Job Ticket: 48263

DST#: 7

ATTN: Brad Rine

Test Start: 2015.11.10 @ 15:05:19

Tool Information

Drill Pipe:	Length: 4170.00 ft	Diameter: 3.80 inches	Volume: 58.49 bbl	Tool Weight: 2500.00 lb
Heavy Wt. Pipe:	Length: 0.00 ft	Diameter: 0.00 inches	Volume: 0.00 bbl	Weight set on Packer: 25000.00 lb
Drill Collar:	Length: 120.00 ft	Diameter: 2.25 inches	Volume: 0.59 bbl	Weight to Pull Loose: 90000.00 lb
			<u>Total Volume: 59.08 bbl</u>	Tool Chased 0.00 ft
Drill Pipe Above KB:	8.00 ft			String Weight: Initial 65000.00 lb
Depth to Top Packer:	4310.00 ft			Final 66000.00 lb
Depth to Bottom Packer:	ft			
Interval between Packers:	120.00 ft			
Tool Length:	148.00 ft			
Number of Packers:	2	Diameter: 6.75 inches		

Tool Comments:

Tool Description

Length (ft) Serial No. Position Depth (ft) Accum. Lengths

Tool Description	Length (ft)	Serial No.	Position	Depth (ft)	Accum. Lengths
Change Over Sub	1.00			4283.00	
Shut In Tool	5.00			4288.00	
Hydraulic tool	5.00			4293.00	
Jars	5.00			4298.00	
Safety Joint	3.00			4301.00	
Packer	5.00			4306.00	28.00 Bottom Of Top Packer
Packer	4.00			4310.00	
Stubb	1.00			4311.00	
Recorder	0.00	9120	Outside	4311.00	
Recorder	0.00	8938	Inside	4311.00	
Perforations	17.00			4328.00	
Change Over Sub	1.00			4329.00	
Drill Pipe	95.00			4424.00	
Change Over Sub	1.00			4425.00	
Bullnose	5.00			4430.00	120.00 Bottom Packers & Anchor

Total Tool Length: 148.00



**TRILOBITE
TESTING, INC**

DRILL STEM TEST REPORT

FLUID SUMMARY

Carmen Schmitt Inc

2-7s-32w Thomas,KS

PO Box 47
Great Bend, KS 67503-0047

Ziegelmeier #1-2

Job Ticket: 48263

DST#: 7

ATTN: Brad Rine

Test Start: 2015.11.10 @ 15:05:19

Mud and Cushion Information

Mud Type: Gel Chem

Cushion Type:

Oil API:

0 deg API

Mud Weight: 9.00 lb/gal

Cushion Length:

ft

Water Salinity:

0 ppm

Viscosity: 55.00 sec/qt

Cushion Volume:

bbbl

Water Loss: 6.39 in³

Gas Cushion Type:

Resistivity: 0.00 ohm.m

Gas Cushion Pressure:

psig

Salinity: 2000.00 ppm

Filter Cake: 1.00 inches

Recovery Information

Recovery Table

Length ft	Description	Volume bbl
150.00	mud 100%m	1.011

Total Length: 150.00 ft Total Volume: 1.011 bbl

Num Fluid Samples: 0

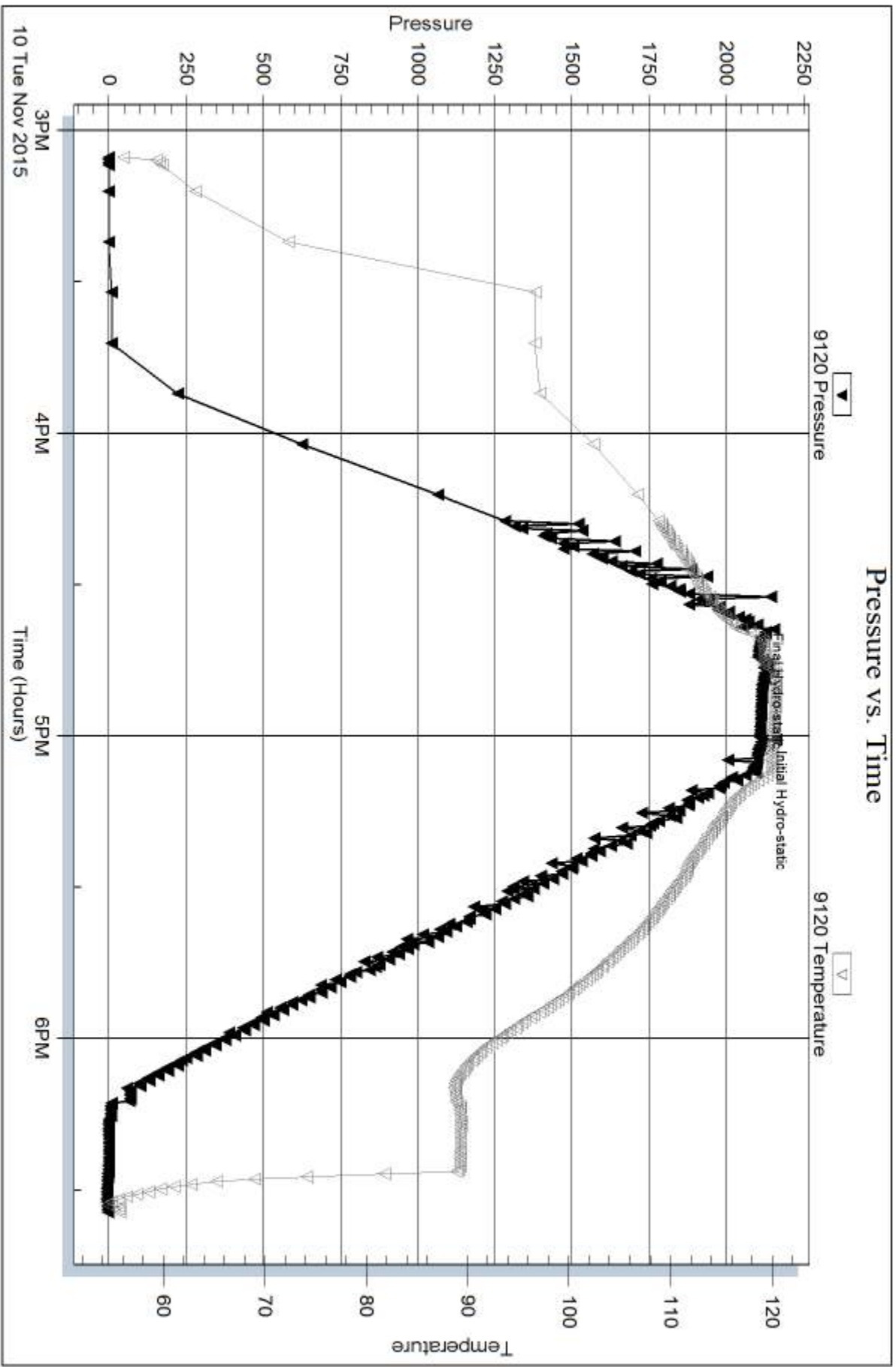
Num Gas Bombs: 0

Serial #:

Laboratory Name:

Laboratory Location:

Recovery Comments:



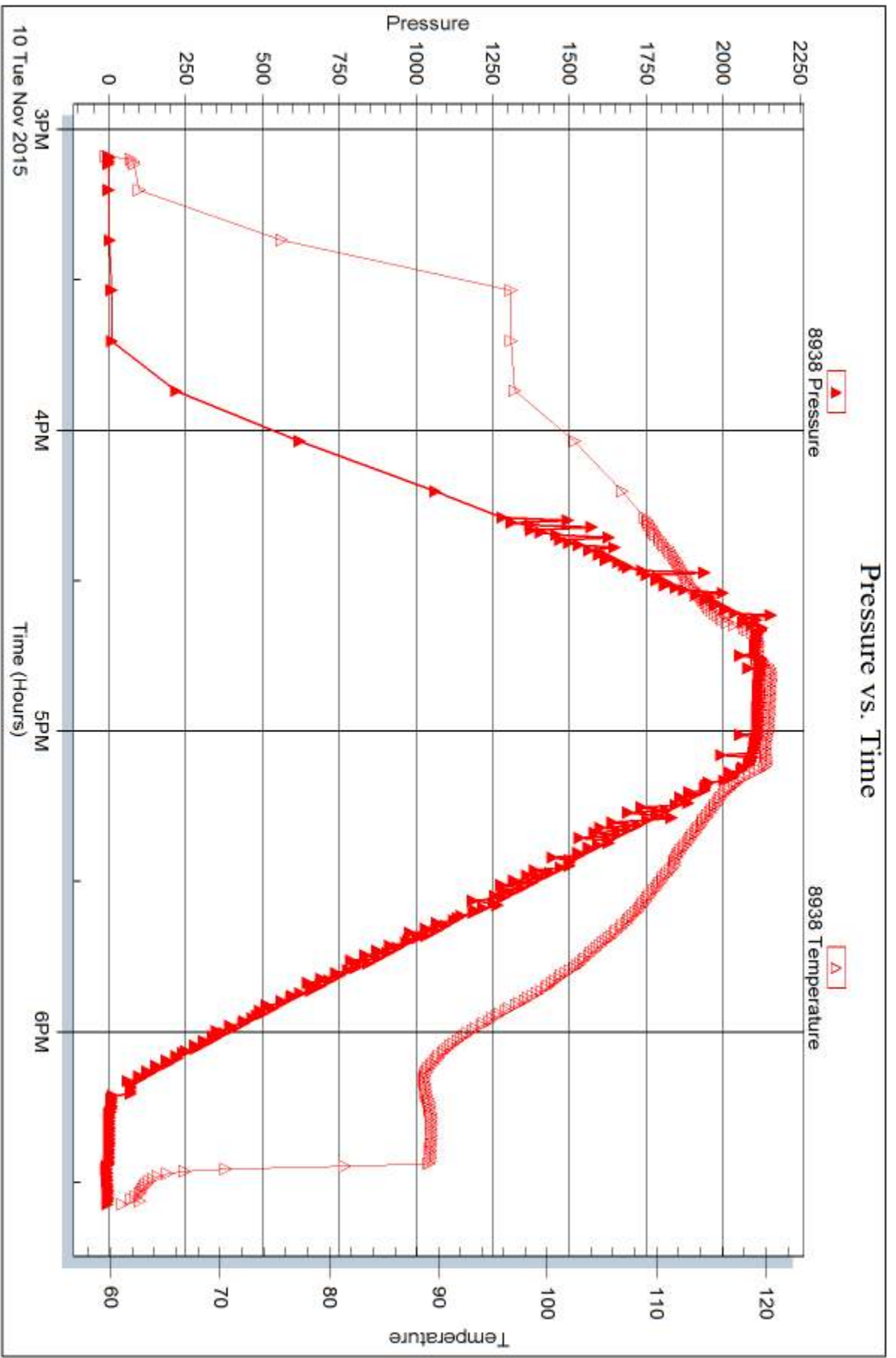
Serial #: 8938

Inside

Carmen Schmitt Inc

Ziegelmeier #1-2

DST Test Number: 7





DRILL STEM TEST REPORT

Prepared For: **Carmen Schmitt Inc**

PO Box 47
Great Bend, KS 67503-0047

ATTN: Brad Rine

Ziegelmeier #1-2

2-7s-32w Thomas,KS

Start Date: 2015.11.10 @ 18:50:41

End Date: 2015.11.11 @ 01:45:56

Job Ticket #: 48264 DST #: 8

Trilobite Testing, Inc
1515 Commerce Parkway Hays, KS 67601
ph: 785-625-4778 fax: 785-625-5620

Printed: 2015.11.12 @ 08:14:44



**TRILOBITE
TESTING, INC**

DRILL STEM TEST REPORT

Carmen Schmitt Inc
PO Box 47
Great Bend, KS 67503-0047
ATTN: Brad Rine

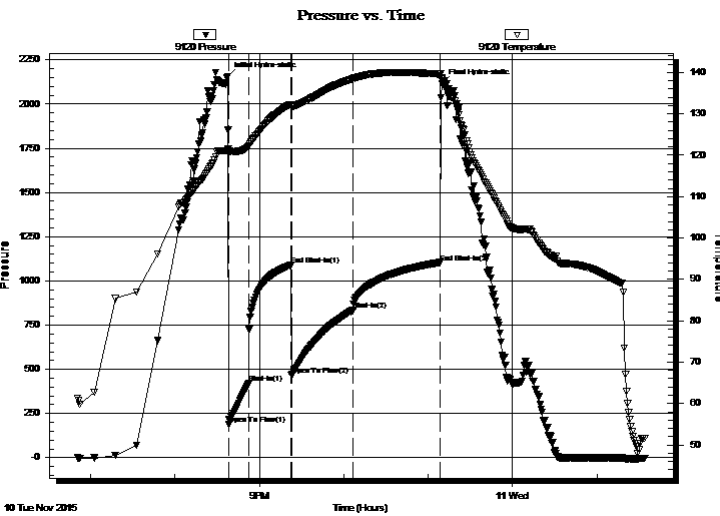
2-7s-32w Thomas,KS
Ziegelmeier #1-2
Job Ticket: 48264 **DST#: 8**
Test Start: 2015.11.10 @ 18:50:41

GENERAL INFORMATION:

Formation: **Pawnee - Ft Scott**
Deviated: No Whipstock: ft (KB)
Time Tool Opened: 20:37:56
Time Test Ended: 01:45:56
Interval: **4320.00 ft (KB) To 4430.00 ft (KB) (TVD)**
Total Depth: 4430.00 ft (KB) (TVD)
Hole Diameter: 7.88 inches Hole Condition: Fair
Test Type: Conventional Bottom Hole (Reset)
Tester: Shane McBride
Unit No: 84
Reference Elevations: 2999.00 ft (KB)
2994.00 ft (CF)
KB to GR/CF: 5.00 ft

Serial #: 9120 Outside
Press@RunDepth: 835.11 psig @ 4321.00 ft (KB) Capacity: 8000.00 psig
Start Date: 2015.11.10 End Date: 2015.11.11 Last Calib.: 2015.11.11
Start Time: 18:50:41 End Time: 01:33:56 Time On Btm: 2015.11.10 @ 20:37:26
Time Off Btm: 2015.11.10 @ 23:09:41

TEST COMMENT: B.O.B. in 2 1/2 min
No return
B.O.B. in 3 1/2 min
No return



PRESSURE SUMMARY

Time (Min.)	Pressure (psig)	Temp (deg F)	Annotation
0	2156.04	121.30	Initial Hydro-static
1	186.85	120.72	Open To Flow (1)
15	420.07	122.10	Shut-In(1)
45	1088.47	132.30	End Shut-In(1)
46	465.03	131.94	Open To Flow (2)
90	835.11	138.47	Shut-In(2)
151	1104.52	139.58	End Shut-In(2)
153	2117.08	138.74	Final Hydro-static

Recovery

Length (ft)	Description	Volume (bbl)
1298.00	water w/oil scum 100%w	17.11
310.00	s m c w w/heavy oil scum 15m 85w	4.35
164.00	m c w w/heavy oil scum 50m 50w	2.30
0.00	2" in free oil on top	0.00

* Recovery from multiple tests

Gas Rates

	Choke (inches)	Pressure (psig)	Gas Rate (Mcf/d)



**TRILOBITE
TESTING, INC**

DRILL STEM TEST REPORT

TOOL DIAGRAM

Carmen Schmitt Inc

2-7s-32w Thomas,KS

PO Box 47
Great Bend, KS 67503-0047

Ziegelmeier #1-2

Job Ticket: 48264

DST#: 8

ATTN: Brad Rine

Test Start: 2015.11.10 @ 18:50:41

Tool Information

Drill Pipe:	Length: 4200.00 ft	Diameter: 3.80 inches	Volume: 58.91 bbl	Tool Weight: 2500.00 lb
Heavy Wt. Pipe:	Length: 0.00 ft	Diameter: 0.00 inches	Volume: 0.00 bbl	Weight set on Packer: 25000.00 lb
Drill Collar:	Length: 120.00 ft	Diameter: 2.25 inches	Volume: 0.59 bbl	Weight to Pull Loose: 90000.00 lb
			<u>Total Volume: 59.50 bbl</u>	Tool Chased 0.00 ft
Drill Pipe Above KB:	28.00 ft			String Weight: Initial 65000.00 lb
Depth to Top Packer:	4320.00 ft			Final 76000.00 lb
Depth to Bottom Packer:	ft			
Interval between Packers:	110.00 ft			
Tool Length:	138.00 ft			
Number of Packers:	2	Diameter: 6.75 inches		

Tool Comments:

Tool Description

Tool Description	Length (ft)	Serial No.	Position	Depth (ft)	Accum. Lengths
Change Over Sub	1.00			4293.00	
Shut In Tool	5.00			4298.00	
Hydraulic tool	5.00			4303.00	
Jars	5.00			4308.00	
Safety Joint	3.00			4311.00	
Packer	5.00			4316.00	28.00 Bottom Of Top Packer
Packer	4.00			4320.00	
Stubb	1.00			4321.00	
Recorder	0.00	9120	Outside	4321.00	
Recorder	0.00	8938	Inside	4321.00	
Perforations	7.00			4328.00	
Change Over Sub	1.00			4329.00	
Drill Pipe	95.00			4424.00	
Change Over Sub	1.00			4425.00	
Bullnose	5.00			4430.00	110.00 Bottom Packers & Anchor

Total Tool Length: 138.00



**TRILOBITE
TESTING, INC**

DRILL STEM TEST REPORT

FLUID SUMMARY

Carmen Schmitt Inc

2-7s-32w Thomas,KS

PO Box 47
Great Bend, KS 67503-0047

Ziegelmeier #1-2

Job Ticket: 48264

DST#: 8

ATTN: Brad Rine

Test Start: 2015.11.10 @ 18:50:41

Mud and Cushion Information

Mud Type: Gel Chem

Cushion Type:

Oil API:

0 deg API

Mud Weight: 9.00 lb/gal

Cushion Length:

ft

Water Salinity:

30000 ppm

Viscosity: 55.00 sec/qt

Cushion Volume:

bbbl

Water Loss: 6.39 in³

Gas Cushion Type:

Resistivity: 0.00 ohm.m

Gas Cushion Pressure:

psig

Salinity: 2000.00 ppm

Filter Cake: 1.00 inches

Recovery Information

Recovery Table

Length ft	Description	Volume bbl
1298.00	water w /oil scum 100%w	17.114
310.00	s m c w w /heavy oil scum 15m 85w	4.348
164.00	m c w w /heavy oil scum 50m 50w	2.300
0.00	2" in free oil on top	0.000

Total Length: 1772.00 ft Total Volume: 23.762 bbl

Num Fluid Samples: 0

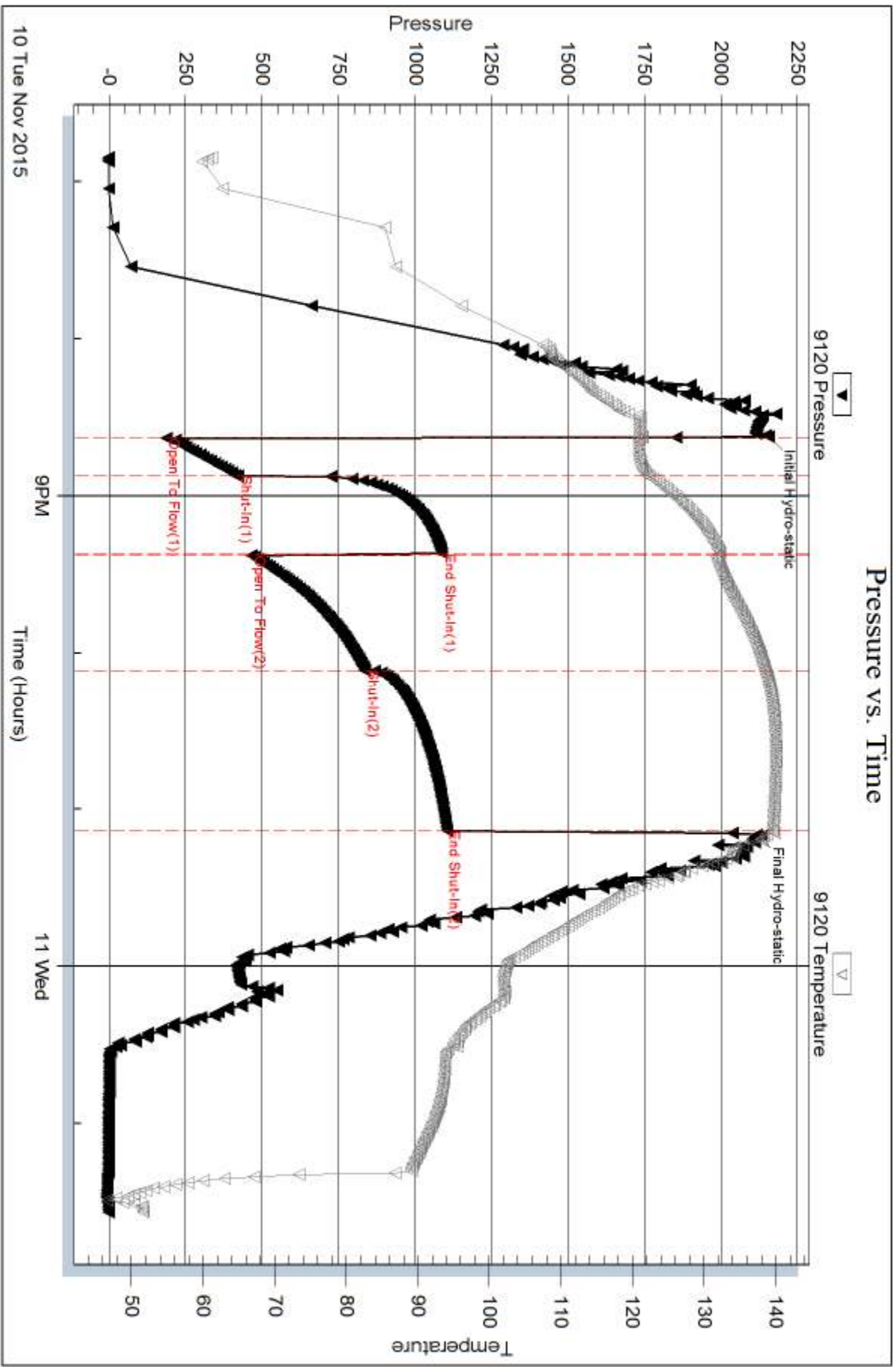
Num Gas Bombs: 0

Serial #:

Laboratory Name:

Laboratory Location:

Recovery Comments: rw .272 @ 60*f



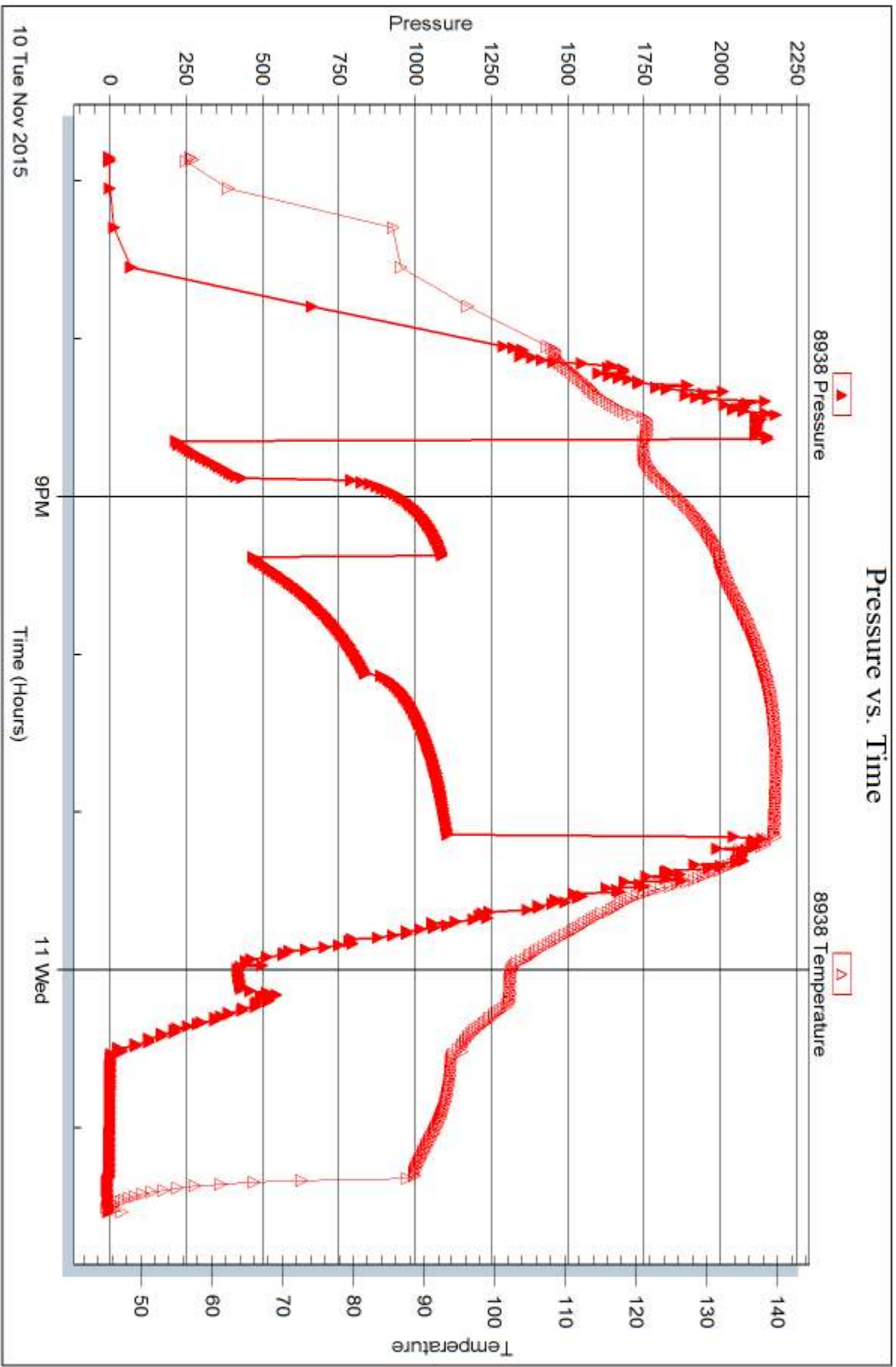
Serial #: 8938

Inside

Carmen Schmitt Inc

Ziegelmeier #1-2

DST Test Number: 8



Triobite Testing, Inc

Ref. No: 48264

Printed: 2015.11.12 @ 08:14:45



TRILOBITE TESTING INC.

P.O. Box 1733 • Hays, Kansas 67601

Test Ticket

NO. 45520

4/10

Well Name & No. Ziegelmeier #12 Test No. #1 Date 11/7/15
 Company Carmen Schmitt Inc. Elevation 2999 KB 2994 GL
 Address P.O. Box 47 Great Bend, Ks 67453-0047
 Co. Rep / Geo. Brad Rine Rig WW #10
 Location: Sec. 2 Twp. 7s Rge. 32w Co. Thomas State Ks

Interval Tested 3934 3990 Zone Tested Toronto - "A"
 Anchor Length 510 Drill Pipe Run 3789' Mud Wt. 8.9
 Top Packer Depth 3929 Drill Collars Run 120' Vis 48
 Bottom Packer Depth 3934 Wt. Pipe Run ———— WL 5.6
 Total Depth 3990 Chlorides 1500 ppm System LCM #1
 Blow Description 1/4" in died back to wear surface blow
No return
No blow pull tool after 10 min.

Rec	Feet of	%gas	%oil	%water	%mud
<u>1'</u>	<u>Mud</u>			<u>100</u>	
Rec	Feet of	%gas	%oil	%water	%mud
Rec	Feet of	%gas	%oil	%water	%mud
Rec	Feet of	%gas	%oil	%water	%mud
Rec	Feet of	%gas	%oil	%water	%mud

Rec Total 1' BHT 115° Gravity ———— API RW ———— @ ———— F Chlorides ———— ppm

(A) Initial Hydrostatic 1982 Test 1050 T-On Location 22:00
 (B) First Initial Flow 24 Jars 250 T-Started 23:15
 (C) First Final Flow 25 Safety Joint 75 T-Open 01:12
 (D) Initial Shut-In 70 Circ Sub N/A T-Pulled 02:07
 (E) Second Initial Flow 25 Hourly Standby ———— T-Out 03:46
 (F) Second Final Flow 24 Mileage 148 RS 84 Comments ————
 (G) Final Shut-In ———— Sampler ————
 (H) Final Hydrostatic 1846 Straddle ———— Ruined Shale Packer ————
 Shale Packer ———— Ruined Packer ————
 Extra Packer ———— Extra Copies ————
 Extra Recorder ———— Sub Total 0
 Day Standby ———— Total 1459
 Accessibility ———— MP/DST Disc't ————
 Sub Total 1459

Approved By Brad Rine Our Representative [Signature]

Trilobite Testing Inc. shall not be liable for damaged of any kind of the property or personnel of the one for whom a test is made, or for any loss suffered or sustained, directly or indirectly, through the use of its equipment, or its statements or opinion concerning the results of any test, tools lost or damaged in the hole shall be paid for at cost by the party for whom the test is made.



TRILOBITE TESTING INC.

P.O. Box 1733 • Hays, Kansas 67601

Test Ticket

NO. 45522

Well Name & No. Ziegelmeier # 1-2 Test No. #2 Date 11/7/15
 Company Carmen Schmitt Inc Elevation 2999 KB 2994 GL
 Address Box 47 Great Bend, KS 67503-0047
 Co. Rep / Geo. Brad Rome Rig WW#10
 Location: Sec. 2 Twp. 7E Rge. 32W Co. Thomas State KS

Interval Tested 3993 4050 Zone Tested C-D
 Anchor Length 57 Drill Pipe Run 3855 Mud Wt. 9.1
 Top Packer Depth 3988 Drill Collars Run 120 Vis 49
 Bottom Packer Depth 3993 Wt. Pipe Run — WL 6.4
 Total Depth 4050 Chlorides 2000 ppm System LCM #1

Blow Description BOB on 1 min
No return
BOB on 1 min
No return

Rec	Feet of	%gas	%oil	%water	%mud
<u>75'</u>	<u>WCW</u>		<u>50</u>	<u>50</u>	
<u>126</u>	<u>MCW</u>		<u>75</u>	<u>25</u>	
<u>2400'</u>	<u>water (Reversed out)</u>		<u>100</u>		
<u>120'</u>	<u>(under (the sub) MCW)</u>		<u>70</u>	<u>30</u>	
Rec	Feet of	%gas	%oil	%water	%mud

Rec Total 2741 BHT 133° Gravity — API RW .346 @ 54 °F Chlorides 29,500 ppm
 (A) Initial Hydrostatic 1957 Test 1150 T-On Location 11:40
 (B) First Initial Flow 657 Jars 250 T-Started 11:50
 (C) First Final Flow 1064 Safety Joint 75 T-Open 13:43
 (D) Initial Shut-In 1309 Circ Sub — T-Pulled 14:13
 (E) Second Initial Flow 1080 Hourly Standby — T-Out —
 (F) Second Final Flow 1298 Mileage 148 RT 84 Comments —
 (G) Final Shut-In 1310 Sampler —
 (H) Final Hydrostatic 1900 Straddle — Ruined Shale Packer —
 Shale Packer — Ruined Packer —
 Extra Packer — Extra Copies —
 Extra Recorder — Sub Total 0
 Day Standby — Total 1559
 Accessibility — MP/DST Disc't —

Initial Open 15
 Initial Shut-In 30
 Final Flow 13
 Final Shut-In 30
 Sub Total 1559

Approved By Brad Rome Our Representative [Signature]

Trilobite Testing Inc. shall not be liable for damaged of any kind of the property or personnel of the one for whom a test is made, or for any loss suffered or sustained, directly or indirectly, through the use of its equipment, or its statements or opinion concerning the results of any test, tools lost or damaged in the hole shall be paid for at cost by the party for whom the test is made.



TRILOBITE TESTING INC.

P.O. Box 1733 • Hays, Kansas 67601

Test Ticket

NO. 45523

4/10

Well Name & No. Ziegelmeier #1-2 Test No. #3 Date 11/8/15
 Company Campbell Schmitt Inc. Elevation 2999 KB 2994 GL
 Address P.O. Box 47 Great Bend Ks 67503-0047
 Co. Rep / Geo. Brad Rine Rig Wes #10
 Location: Sec. 2 Twp. 75 Rge. 32W Co. Thomas State Ks

Interval Tested 4047 4073 Zone Tested E
 Anchor Length 26 Drill Pipe Run 3920 Mud Wt. 9.1
 Top Packer Depth 4042 Drill Collars Run 120 Vis 49
 Bottom Packer Depth 4067 Wt. Pipe Run — WL 6.4
 Total Depth 4073 Chlorides 2000 ppm System LCM #1
 Blow Description Weak surface blow died w/ 7 min.
No return
No blow pull tool after 15 min.

Rec	Feet of	%gas	%oil	%water	%mud
<u>1'</u>	<u>4 mud</u>			<u>100</u>	
Rec	Feet of	%gas	%oil	%water	%mud
Rec	Feet of	%gas	%oil	%water	%mud
Rec	Feet of	%gas	%oil	%water	%mud
Rec	Feet of	%gas	%oil	%water	%mud

Rec Total 1' BHT 116" Gravity — API RW — @ — °F Chlorides — ppm
 (A) Initial Hydrostatic 1985 Test 1150 T-On Location 00:50
 (B) First Initial Flow 16 Jars 250 T-Started 06:00
 (C) First Final Flow 22 Safety Joint 75 T-Open 03:00
 (D) Initial Shut-In 1206 Circ Sub W/C T-Pulled 03:45
 (E) Second Initial Flow 22 Hourly Standby — T-Out 06:30
 (F) Second Final Flow 27 Mileage 14825 84 Comments —
 (G) Final Shut-In + Sampler —
 (H) Final Hydrostatic 1911 Straddle — Ruined Shale Packer —
 Shale Packer — Ruined Packer —
 Extra Packer — Extra Copies —
 Extra Recorder — Sub Total 0
 Day Standby — Total 1559
 Accessibility — MP/DST Disc't —
 Sub Total 1559

Approved By Brad Rine Our Representative [Signature]

Trilobite Testing Inc. shall not be liable for damaged of any kind of the property or personnel of the one for whom a test is made, or for any loss suffered or sustained, directly or indirectly, through the use of its equipment, or its statements or opinion concerning the results of any test, tools lost or damaged in the hole shall be paid for at cost by the party for whom the test is made.



TRILOBITE TESTING INC.

P.O. Box 1733 • Hays, Kansas 67601

Test Ticket

NO. 45524

4/10

Well Name & No. Ziegelmeier #1-2 Test No. #4 Date 11/8/15
 Company Carver Schnitt Inc. Elevation 2999 KB 2994 GL
 Address P.O. Box 47 Great Bend, KS 67503-0047
 Co. Rep / Geo. Brad Rine Rig WW #10
 Location: Sec. 2 Twp. 75 Rge. 32w Co. Thomas State KS

Interval Tested 4087 4144 Zone Tested G-H-I
 Anchor Length 57 Drill Pipe Run 3751 Mud Wt. 9.1
 Top Packer Depth 4082 Drill Collars Run 120 Vis 49
 Bottom Packer Depth 4087 Wt. Pipe Run — WL 6.4
 Total Depth 4144 Chlorides 2000 ppm System LCM #1
 Blow Description 1/4" ir blow dred back to surface blow
No return
Surface blow after 3min. pull tool after 15 min

Rec	Feet of	%gas	%oil	%water	%mud
<u>60'</u>	<u>Med w/oil spots</u>	<u>Spots</u>		<u>100</u>	
	<u>2" free oil on top</u>				

Rec Total 60' BHT 113° Gravity — API RW — @ — °F Chlorides — ppm

(A) Initial Hydrostatic <u>2007</u>	<input checked="" type="checkbox"/> Test <u>1150</u>	T-On Location <u>Stayed on hole</u>
(B) First Initial Flow <u>20</u>	<input checked="" type="checkbox"/> Jars <u>250</u>	T-Started <u>13:00</u>
(C) First Final Flow <u>32</u>	<input checked="" type="checkbox"/> Safety Joint <u>75</u>	T-Open <u>16:41</u>
(D) Initial Shut-In <u>1350</u>	<input checked="" type="checkbox"/> Circ Sub <u>w/c</u>	T-Pulled <u>17:41</u>
(E) Second Initial Flow <u>39</u>	<input type="checkbox"/> Hourly Standby	T-Out <u>19:50</u>
(F) Second Final Flow <u>49</u>	<input checked="" type="checkbox"/> Mileage <u>118 rt</u>	Comments
(G) Final Shut-In <u>—</u>	<input type="checkbox"/> Sampler	
(H) Final Hydrostatic <u>1928</u>	<input type="checkbox"/> Straddle	<input type="checkbox"/> Ruined Shale Packer
	<input type="checkbox"/> Shale Packer	<input type="checkbox"/> Ruined Packer
	<input type="checkbox"/> Extra Packer	<input type="checkbox"/> Extra Copies
	<input type="checkbox"/> Extra Recorder	Sub Total <u>0</u>
	<input type="checkbox"/> Day Standby	Total <u>1475</u>
	<input type="checkbox"/> Accessibility	MP/DST Disc't
	Sub Total <u>1475</u>	

Approved By Brad Rine Our Representative [Signature]

Trilobite Testing Inc. shall not be liable for damaged of any kind of the property or personnel of the one for whom a test is made, or for any loss suffered or sustained, directly or indirectly, through the use of its equipment, or its statements or opinion concerning the results of any test, tools lost or damaged in the hole shall be paid for at cost by the party for whom the test is made.



TRILOBITE TESTING INC.

P.O. Box 1733 • Hays, Kansas 67601

Test Ticket

NO. 45525

4/10

Well Name & No. Fiegelmeier #1-2 Test No. #5 Date 11/9/15
 Company Cameron Schmidt Inc. Elevation 2999 KB 2994 GL
 Address P.O. Box 47 Great Bend KS 67403-0047
 Co. Rep / Geo. Brad Rine Rig WW#10
 Location: Sec. 2 Twp. 7S Rge. 32W Co. Thomas State KS

Interval Tested 4137 4167 Zone Tested J
 Anchor Length 30 Drill Pipe Run 4004 Mud Wt. 9.1
 Top Packer Depth 4132 Drill Collars Run 170' Vis 49
 Bottom Packer Depth 4137 Wt. Pipe Run --- WL 6.4
 Total Depth 4167 Chlorides 2000 ppm System LCM #1
 Blow Description Packer Failure @ open reset failed again pull tool

Rec	Feet of	%gas	%oil	%water	%mud
<u>390'</u>	<u>Mud</u>			<u>100</u>	
Rec	Feet of	%gas	%oil	%water	%mud
Rec	Feet of	%gas	%oil	%water	%mud
Rec	Feet of	%gas	%oil	%water	%mud
Rec	Feet of	%gas	%oil	%water	%mud

Rec Total 390' BHT --- Gravity --- API RW --- @ --- °F Chlorides --- ppm

(A) Initial Hydrostatic --- Test 950 T-On Location stayed on loc
 (B) First Initial Flow --- Jars 250 T-Started 02:10
 (C) First Final Flow --- Safety Joint 75 T-Open 03:45
 (D) Initial Shut-In --- Circ Sub N/C T-Pulled 03:50
 (E) Second Initial Flow --- Hourly Standby --- T-Out 05:30
 (F) Second Final Flow --- Mileage N/C Comments ---
 (G) Final Shut-In --- Sampler ---
 (H) Final Hydrostatic --- Straddle --- Ruined Shale Packer ---
 Shale Packer --- Ruined Packer ---
 Extra Packer --- Extra Copies ---
 Extra Recorder --- Sub Total 0
 Day Standby --- Total 1275
 Accessibility --- MP/DST Disc't ---
 Sub Total 1275

Approved By --- Our Representative [Signature]

Trilobite Testing Inc. shall not be liable for damaged of any kind of the property or personnel of the one for whom a test is made, or for any loss suffered or sustained, directly or indirectly, through the use of its equipment, or its statements or opinion concerning the results of any test, tools lost or damaged in the hole shall be paid for at cost by the party for whom the test is made.



TRILOBITE TESTING INC.

P.O. Box 1733 • Hays, Kansas 67601

Test Ticket

NO. 48262

Well Name & No. Fiegelmeier #1-2 Test No. #6 Date 11/2/15
 Company Cannon Schlusht Inc Elevation 2999 KB 2994 GL
 Address Box 47 Great Bend KS 67503-0047
 Co. Rep / Geo. Brad Rime Rig WV #10
 Location: Sec. 2 Twp. 7S Rge. 32W Co. Thomas State KS

Interval Tested 4115 4167 Zone Tested LJS
 Anchor Length _____ Drill Pipe Run _____ Mud Wt. 9.3
 Top Packer Depth 4110 Drill Collars Run 120 Vis 48
 Bottom Packer Depth 4113 Wt. Pipe Run _____ WL 7.2
 Total Depth 4167 Chlorides 2500 ppm System LCM #1

Blow Description 1/4" blow
No return
Surface blow on 3 min
No return

Rec	Feet of	%gas	%oil	%water	%mud
<u>3'</u>	<u>Mud</u>			<u>100</u>	
Rec	Feet of	%gas	%oil	%water	%mud
Rec	Feet of	%gas	%oil	%water	%mud
Rec	Feet of	%gas	%oil	%water	%mud
Rec	Feet of	%gas	%oil	%water	%mud

Rec Total 3' BHT 112° Gravity _____ API RW _____ @ _____ F Chlorides _____ ppm

(A) Initial Hydrostatic <u>2024</u>	<input checked="" type="checkbox"/> Test <u>1150</u>	T-On Location <u>Fixed on box</u>
(B) First Initial Flow <u>21</u>	<input checked="" type="checkbox"/> Jars <u>250</u>	T-Started <u>10:40</u>
(C) First Final Flow <u>20</u>	<input checked="" type="checkbox"/> Safety Joint <u>75</u>	T-Open <u>13:05</u>
(D) Initial Shut-In <u>90</u>	<input checked="" type="checkbox"/> Circ Sub <u>N/A</u>	T-Pulled <u>15:20</u>
(E) Second Initial Flow <u>21</u>	<input type="checkbox"/> Hourly Standby _____	T-Out <u>17:15</u>
(F) Second Final Flow <u>20</u>	<input checked="" type="checkbox"/> Mileage <u>148.05</u>	Comments _____
(G) Final Shut-In <u>84</u>	<input type="checkbox"/> Sampler _____	
(H) Final Hydrostatic <u>1963</u>	<input type="checkbox"/> Straddle _____	<input type="checkbox"/> Ruined Shale Packer _____
	<input type="checkbox"/> Shale Packer _____	<input type="checkbox"/> Ruined Packer _____
	<input type="checkbox"/> Extra Packer _____	<input type="checkbox"/> Extra Copies _____
	<input type="checkbox"/> Extra Recorder _____	Sub Total <u>0</u>
	<input type="checkbox"/> Day Standby _____	Total <u>1475</u>
	<input type="checkbox"/> Accessibility _____	MP/DST-Disc't _____
	Sub Total <u>1475</u>	

Approved By Brad Rime Our Representative [Signature]

Trilobite Testing Inc. shall not be liable for damaged of any kind of the property or personnel of the one for whom a test is made, or for any loss suffered or sustained, directly or indirectly, through the use of its equipment, or its statements or opinion concerning the results of any test, tools lost or damaged in the hole shall be paid for at cost by the party for whom the test is made.



TRILOBITE TESTING INC.

P.O. Box 1733 • Hays, Kansas 67601

Test Ticket

NO. 48263

Well Name & No. Ziegelmeier #1-2 Test No. #7 Date 11/10/15
 Company Carned Schmitt Inc. Elevation 2999 KB 2994 GL
 Address P.O. Box 47 Great Bend KS 67503-0047
 Co. Rep / Geo. Brad Rine Rig WW#10
 Location: Sec. 2 Twp. 75 Rge. 32w Co. Thomas State KS

Interval Tested 4310 4430 Zone Tested Parma, Ft Scott
 Anchor Length 120 Drill Pipe Run 4170 Mud Wt. 9.6
 Top Packer Depth 4305 Drill Collars Run 120 Vis 55
 Bottom Packer Depth 4310 Wt. Pipe Run — WL 6.4
 Total Depth 4430 Chlorides 2000 ppm System LCM #1
 Blow Description Packer failed @ open Reset failed again. Pump Tool

Rec	Feet of	%gas	%oil	%water	%mud
<u>150</u>	<u>mad</u>				<u>100%</u>
Rec	Feet of	%gas	%oil	%water	%mud
Rec	Feet of	%gas	%oil	%water	%mud
Rec	Feet of	%gas	%oil	%water	%mud
Rec	Feet of	%gas	%oil	%water	%mud

Rec Total 150' BHT — Gravity — API RW — @ — °F Chlorides — ppm

(A) Initial Hydrostatic 2110 Test 950 T-On Location 14:30
 (B) First Initial Flow — Jars 250 T-Started 15:05
 (C) First Final Flow — Safety Joint 75 T-Open 16:48
 (D) Initial Shut-In — Circ Sub N/C T-Pulled 16:55
 (E) Second Initial Flow — Hourly Standby — T-Out 18:40
 (F) Second Final Flow — Mileage 148 RT 84 Comments —
 (G) Final Shut-In — Sampler —
 (H) Final Hydrostatic 2097 Straddle — Ruined Shale Packer —
 Shale Packer — Ruined Packer —
 Extra Packer — Extra Copies —
 Initial Open — Extra Recorder — Sub Total 0
 Initial Shut-In — Day Standby — Total 1359
 Final Flow — Accessibility — MP/DST Disc't —
 Final Shut-In — Sub Total 1359

Approved By Brad Rine Our Representative [Signature]

TriLOBITE TESTING INC. shall not be liable for damaged of any kind of the property or personnel of the one for whom a test is made, or for any loss suffered or sustained, directly or indirectly, through the use of its equipment, or its statements or opinion concerning the results of any test, tools lost or damaged in the hole shall be paid for at cost by the party for whom the test is made.



TRILOBITE TESTING INC.

P.O. Box 1733 • Hays, Kansas 67601

Test Ticket

NO. 48264

Well Name & No. Zingulmerced #1-2 Test No. #8 Date 11/10/15
 Company Carmen Schmitt Inc. Elevation 2999 KB 2994 GL
 Address P.O. Box 47 Great Bend KS 67503-0047
 Co. Rep / Geo. Brad Rine Rig WW#10
 Location: Sec. 2 Twp. 7S Rge. 32W Co. Thomas State KS

Interval Tested 4320 4430 Zone Tested Pawnee, H. Scott
 Anchor Length 110 Drill Pipe Run 4200 Mud Wt. 9.2
 Top Packer Depth 4315 Drill Collars Run 120' Vis 55
 Bottom Packer Depth 4320 Wt. Pipe Run --- WL 6.4
 Total Depth 4430 Chlorides 2000 ppm System LCM #1
 Blow Description B.O.B. in 2 1/2 min.
Noritan
B.O.B. in 3 1/2 min
No return

Rec	Feet of	%gas	%oil	%water	%mud
	<u>2" in free o.i. on Top</u>				
Rec <u>169</u>	Feet of <u>MCW w/Heavy oil Slum</u>	<u>H slum</u>	<u>50</u>	<u>50</u>	<u>50</u>
Rec <u>310</u>	Feet of <u>SMCW w/Heavy oil Slum</u>	<u>H slum</u>	<u>85</u>	<u>15</u>	<u>15</u>
Rec <u>1298</u>	Feet of <u>water w/oil Slum</u>	<u>Slum</u>	<u>100</u>		
Rec	Feet of	%gas	%oil	%water	%mud

Rec Total 1772' BHT 140° Gravity --- API RW .272 @ 60° F Chlorides 30,000 ppm

(A) Initial Hydrostatic <u>2150</u>	<input checked="" type="checkbox"/> Test <u>1150</u>	T-On Location <u>Spayed down hole</u>
(B) First Initial Flow <u>186</u>	<input checked="" type="checkbox"/> Jars <u>250</u>	T-Started <u>18:50</u>
(C) First Final Flow <u>420</u>	<input checked="" type="checkbox"/> Safety Joint <u>75</u>	T-Open <u>20:37</u>
(D) Initial Shut-In <u>1088</u>	<input checked="" type="checkbox"/> Circ Sub <u>N/C</u>	T-Pulled <u>23:07</u>
(E) Second Initial Flow <u>465</u>	<input type="checkbox"/> Hourly Standby	T-Out <u>01:45</u>
(F) Second Final Flow <u>835</u>	<input checked="" type="checkbox"/> Mileage <u>148RT</u> <u>84</u>	Comments <u>Released 3/ loaded</u>
(G) Final Shut-In <u>1104</u>	<input type="checkbox"/> Sampler	<u>Tools on 11/11/2015 @</u>
(H) Final Hydrostatic <u>2117</u>	<input type="checkbox"/> Straddle	<u>21:10 p.m.</u>
Initial Open <u>15</u>	<input checked="" type="checkbox"/> Shale Packer <u>250</u>	<input type="checkbox"/> Ruined Shale Packer
Initial Shut-In <u>30</u>	<input type="checkbox"/> Extra Packer	<input type="checkbox"/> Ruined Packer
Final Flow <u>45</u>	<input type="checkbox"/> Extra Recorder	Sub Total <u>0</u>
Final Shut-In <u>40</u>	<input type="checkbox"/> Day Standby	Total <u>1809</u>
	<input type="checkbox"/> Accessibility	MP/DST Disc't
	Sub Total <u>1809</u>	

Approved By Brad Rine Our Representative [Signature]

TriLOBITE TESTING INC. shall not be liable for damaged of any kind of the property or personnel of the one for whom a test is made, or for any loss suffered or sustained, directly or indirectly, through the use of its equipment, or its statements or opinion concerning the results of any test, tools lost or damaged in the hole shall be paid for at cost by the party for whom the test is made.