



DRILL STEM TEST REPORT

Prepared For: **American Warrior Inc**

3118 Cummings Rd
Garden City KS, 67846

ATTN: Luke Thompson

Lillie #3-30

30-16s-10w Ellsworth,KS

Start Date: 2015.10.18 @ 11:20:01

End Date: 2015.10.18 @ 17:27:45

Job Ticket #: 62956 DST #: 1

Trilobite Testing, Inc
1515 Commerce Parkway Hays, KS 67601
ph: 785-625-4778 fax: 785-625-5620

Printed: 2015.10.22 @ 13:24:07



**TRILOBITE
TESTING, INC**

DRILL STEM TEST REPORT

American Warrior Inc
3118 Cummings Rd
Garden City KS, 67846
ATTN: Luke Thompson

30-16s-10w Ellsworth,KS

Lillie #3-30

Job Ticket: 62956

DST#: 1

Test Start: 2015.10.18 @ 11:20:01

GENERAL INFORMATION:

Formation: **LKC A-B**

Deviated: No Whipstock: ft (KB)

Time Tool Opened: 12:52:07

Time Test Ended: 17:27:45

Test Type: Conventional Bottom Hole (Initial)

Tester: Jared Scheck

Unit No: 55

Interval: 3020.00 ft (KB) To 3061.00 ft (KB) (TVD)

Reference Elevations: 1890.00 ft (KB)

Total Depth: 3061.00 ft (KB) (TVD)

1882.00 ft (CF)

Hole Diameter: 7.88 inches Hole Condition: Fair

KB to GR/CF: 8.00 ft

Serial #: 6666 Outside

Press@RunDepth: 311.33 psig @ 3026.00 ft (KB)

Capacity: 8000.00 psig

Start Date: 2015.10.18

End Date: 2015.10.18

Last Calib.: 2015.10.18

Start Time: 11:20:01

End Time: 17:27:45

Time On Btm: 2015.10.18 @ 12:48:21

Time Off Btm: 2015.10.18 @ 15:38:52

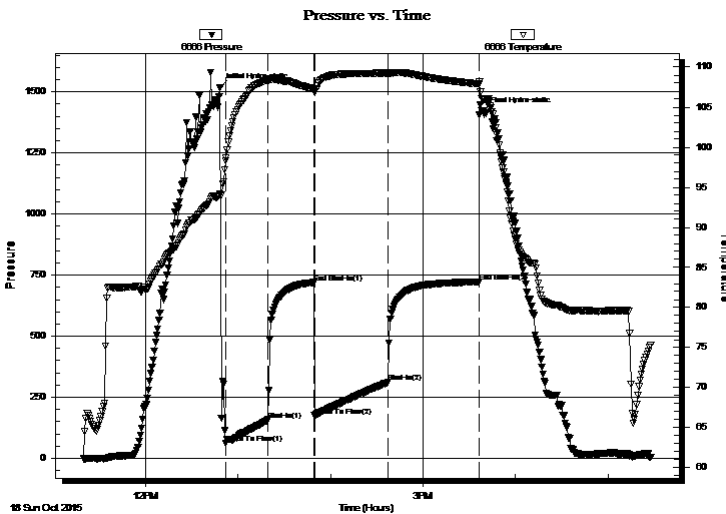
TEST COMMENT: IFP-30 Minutes-Strong blow built bottom of bucket in 1 1/2 minutes

ISIP-30 Minutes-1" blow back

FFP-45 Minutes-Strong blow built bottom of bucket in 5 1/2 minutes gas to surface not enough to gauge

FSIP-60 Minutes-

PRESSURE SUMMARY



Time (Min.)	Pressure (psig)	Temp (deg F)	Annotation
0	1517.27	94.10	Initial Hydro-static
4	60.36	98.32	Open To Flow (1)
32	157.10	108.39	Shut-In(1)
61	719.55	107.24	End Shut-In(1)
62	173.38	106.92	Open To Flow (2)
110	311.33	109.25	Shut-In(2)
168	722.36	107.89	End Shut-In(2)
171	1420.55	105.97	Final Hydro-static

Recovery

Length (ft)	Description	Volume (bbl)
600.00	MW 10% mud 90% water	5.68
0.00	2399' GIP	0.00

Gas Rates

	Choke (inches)	Pressure (psig)	Gas Rate (Mcf/d)



TRILOBITE TESTING, INC.

DRILL STEM TEST REPORT

American Warrior Inc
 3118 Cummings Rd
 Garden City KS, 67846
 ATTN: Luke Thompson

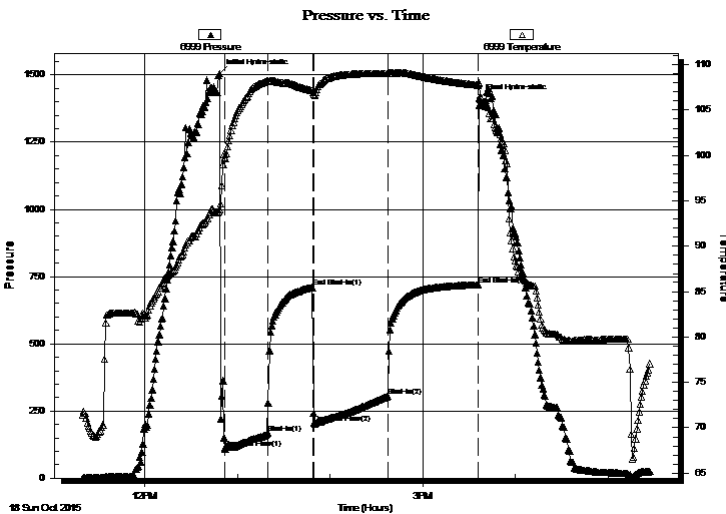
30-16s-10w Ellsworth, KS
Lillie #3-30
 Job Ticket: 62956 **DST#: 1**
 Test Start: 2015.10.18 @ 11:20:01

GENERAL INFORMATION:

Formation: **LKC A-B**
 Deviated: No Whipstock: ft (KB)
 Time Tool Opened: 12:52:07
 Time Test Ended: 17:27:45
 Interval: **3020.00 ft (KB) To 3061.00 ft (KB) (TVD)**
 Total Depth: 3061.00 ft (KB) (TVD)
 Hole Diameter: 7.88 inches Hole Condition: Fair
 Test Type: Conventional Bottom Hole (Initial)
 Tester: Jared Scheck
 Unit No: 55
 Reference Elevations: 1890.00 ft (KB)
 1882.00 ft (CF)
 KB to GR/CF: 8.00 ft

Serial #: 6999 Inside
 Press@RunDepth: 719.94 psig @ 3025.00 ft (KB) Capacity: 8000.00 psig
 Start Date: 2015.10.18 End Date: 2015.10.18 Last Calib.: 2015.10.18
 Start Time: 11:20:01 End Time: 17:27:23 Time On Btm: 2015.10.18 @ 12:48:45
 Time Off Btm: 2015.10.18 @ 15:36:16

TEST COMMENT: IFP-30 Minutes-Strong blow built bottom of bucket in 1 1/2 minutes
 ISIP-30 Minutes-1" blow back
 FFP-45 Minutes-Strong blow built bottom of bucket in 5 1/2 minutes gas to surface not enough to gauge
 FSIP-60 Minutes-



PRESSURE SUMMARY

Time (Min.)	Pressure (psig)	Temp (deg F)	Annotation
0	1506.16	94.10	Initial Hydro-static
4	111.89	99.73	Open To Flow (1)
31	168.20	108.23	Shut-In(1)
60	709.94	107.11	End Shut-In(1)
61	203.83	106.68	Open To Flow (2)
109	305.46	109.05	Shut-In(2)
168	719.94	107.74	End Shut-In(2)
168	1412.28	108.05	Final Hydro-static

Recovery

Length (ft)	Description	Volume (bbl)
600.00	MW 10% mud 90% water	5.68
0.00	2399' GIP	0.00

Gas Rates

	Choke (inches)	Pressure (psig)	Gas Rate (Mcf/d)



**TRILOBITE
TESTING, INC**

DRILL STEM TEST REPORT

TOOL DIAGRAM

American Warrior Inc

30-16s-10w Ellsworth,KS

3118 Cummings Rd
Garden City KS, 67846

Lillie #3-30

Job Ticket: 62956

DST#: 1

ATTN: Luke Thompson

Test Start: 2015.10.18 @ 11:20:01

Tool Information

Drill Pipe:	Length: 2699.00 ft	Diameter: 3.80 inches	Volume: 37.86 bbl	Tool Weight:	1000.00 lb
Heavy Wt. Pipe:	Length: 300.00 ft	Diameter: 2.25 inches	Volume: 1.48 bbl	Weight set on Packer:	20000.00 lb
Drill Collar:	Length: 0.00 ft	Diameter: 0.00 inches	Volume: 0.00 bbl	Weight to Pull Loose:	55000.00 lb
			<u>Total Volume: 39.34 bbl</u>	Tool Chased	0.00 ft
Drill Pipe Above KB:	7.00 ft			String Weight: Initial	45000.00 lb
Depth to Top Packer:	3020.00 ft			Final	48000.00 lb
Depth to Bottom Packer:	ft				
Interval between Packers:	41.00 ft				
Tool Length:	69.00 ft				
Number of Packers:	2	Diameter: 6.75 inches			

Tool Comments:

Tool Description

Tool Description	Length (ft)	Serial No.	Position	Depth (ft)	Accum. Lengths
Shut In Tool	5.00			2997.00	
Hydraulic tool	5.00			3002.00	
Jars	6.00			3008.00	
Safety Joint	2.00			3010.00	
Packer	5.00			3015.00	28.00 Bottom Of Top Packer
Packer	5.00			3020.00	
Anchor	4.00			3024.00	
Recorder	1.00	6999	Inside	3025.00	
Recorder	1.00	6666	Outside	3026.00	
Anchor	31.00			3057.00	
Bullnose	4.00			3061.00	41.00 Bottom Packers & Anchor

Total Tool Length: 69.00



**TRILOBITE
TESTING, INC**

DRILL STEM TEST REPORT

FLUID SUMMARY

American Warrior Inc

30-16s-10w Ellsworth,KS

3118 Cummings Rd
Garden City KS, 67846

Lillie #3-30

Job Ticket: 62956

DST#: 1

ATTN: Luke Thompson

Test Start: 2015.10.18 @ 11:20:01

Mud and Cushion Information

Mud Type: Gel Chem

Cushion Type:

Oil API:

deg API

Mud Weight: 9.00 lb/gal

Cushion Length:

ft

Water Salinity:

60000 ppm

Viscosity: 56.00 sec/qt

Cushion Volume:

bbbl

Water Loss: 8.77 in³

Gas Cushion Type:

Resistivity: ohm.m

Gas Cushion Pressure:

psig

Salinity: 6000.00 ppm

Filter Cake: 1.00 inches

Recovery Information

Recovery Table

Length ft	Description	Volume bbbl
600.00	MW 10% mud 90% water	5.684
0.00	2399' GIP	0.000

Total Length: 600.00 ft Total Volume: 5.684 bbl

Num Fluid Samples: 0

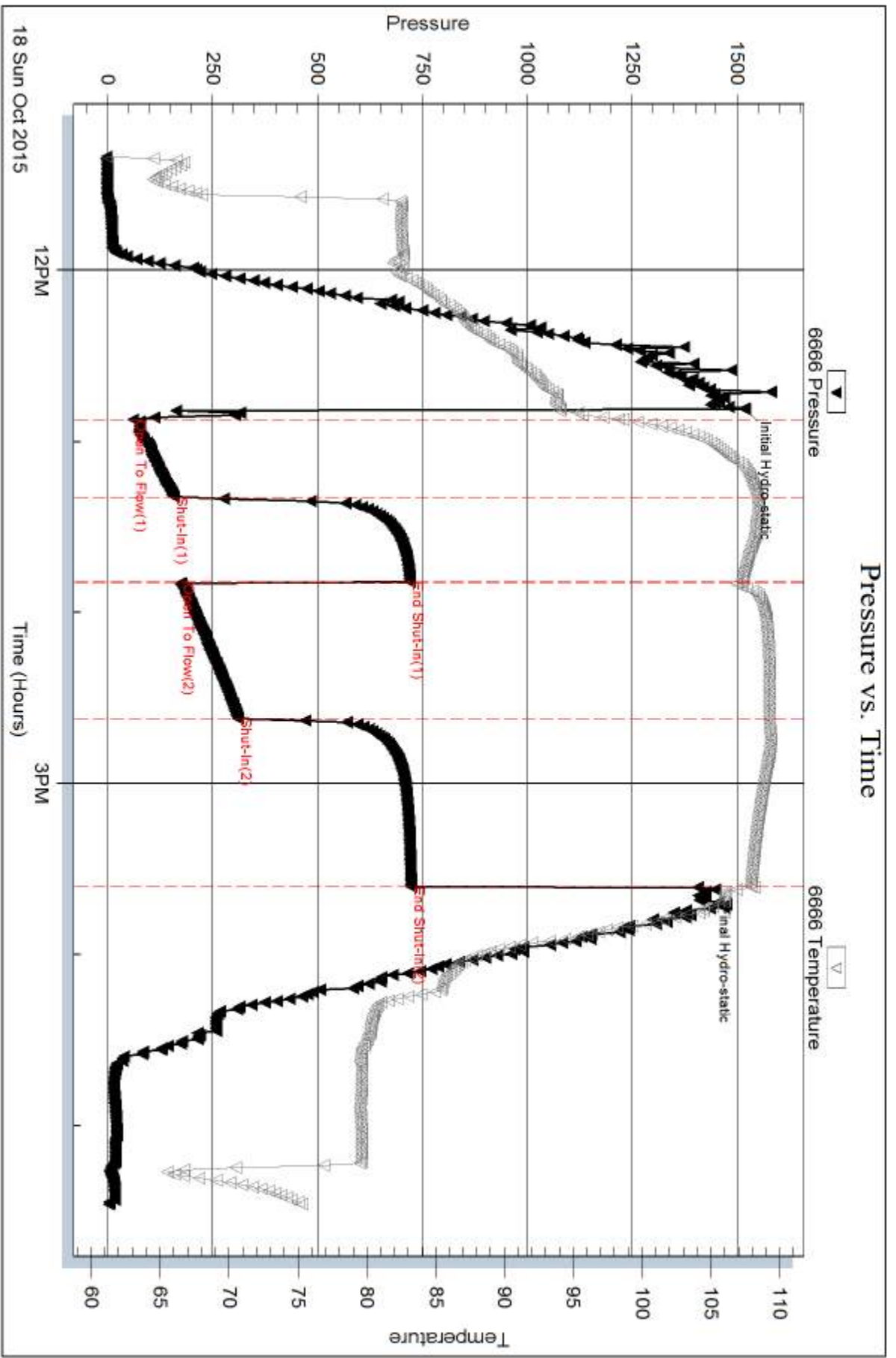
Num Gas Bombs: 0

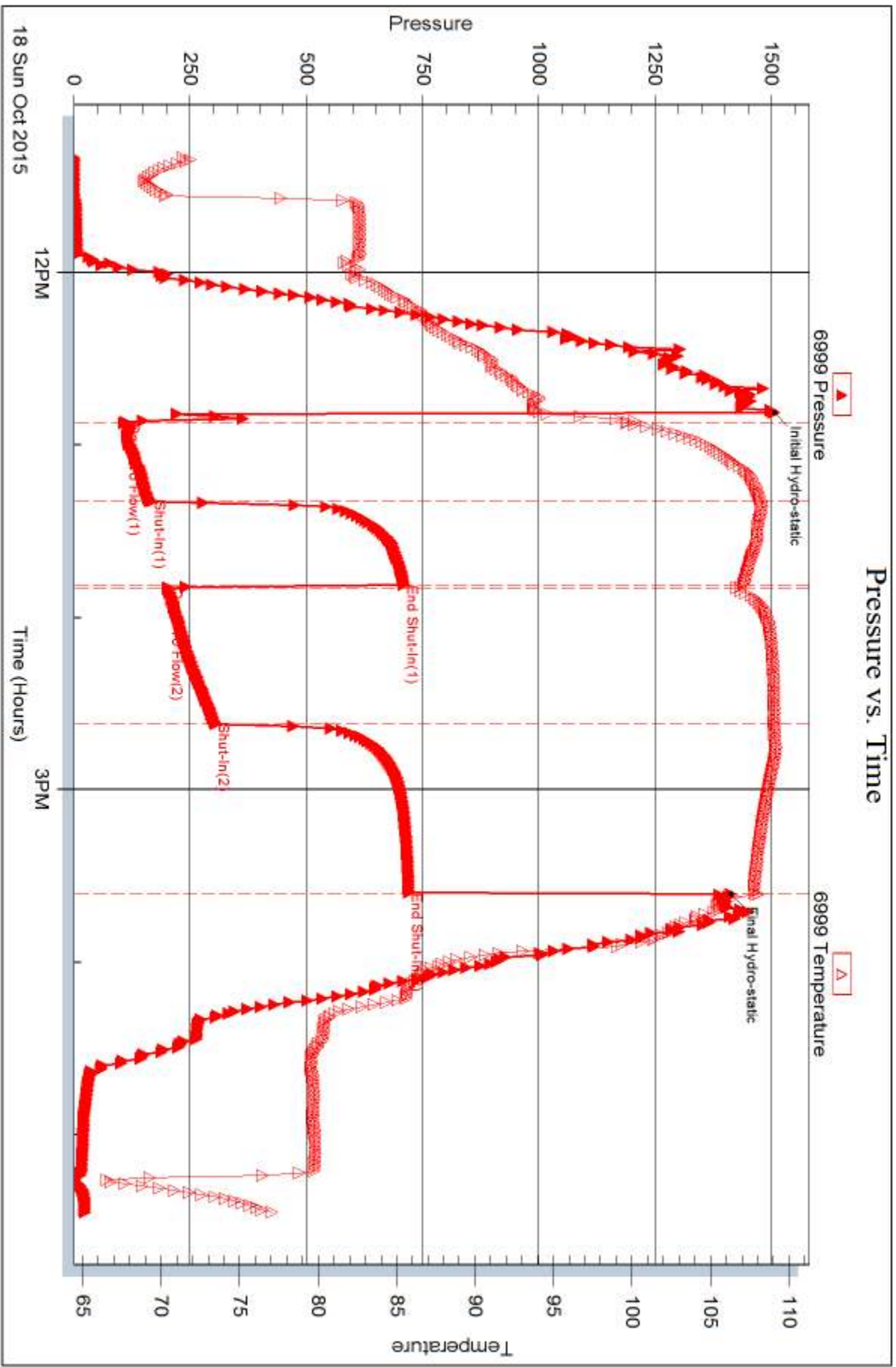
Serial #:

Laboratory Name:

Laboratory Location:

Recovery Comments: chlorides 60,000 resistivity .1@60 degrees







DRILL STEM TEST REPORT

Prepared For: **American Warrior Inc**

3118 Cummings Rd
Garden City KS, 67846

ATTN: Luke Thompson

Lillie #3-30

30-16s-10w Ellsworth,KS

Start Date: 2015.10.19 @ 04:10:00

End Date: 2015.10.19 @ 09:02:12

Job Ticket #: 62957 DST #: 2

Trilobite Testing, Inc
1515 Commerce Parkway Hays, KS 67601
ph: 785-625-4778 fax: 785-625-5620

Printed: 2015.10.22 @ 13:17:47



TRILOBITE TESTING, INC

DRILL STEM TEST REPORT

American Warrior Inc
 3118 Cummings Rd
 Garden City KS, 67846
 ATTN: Luke Thompson

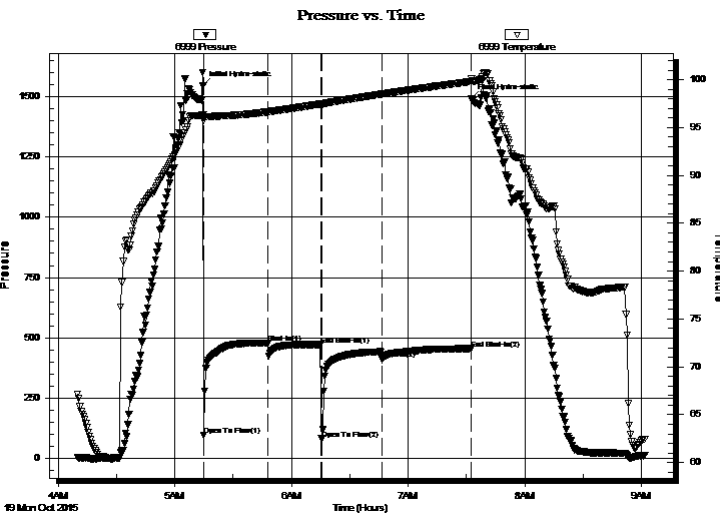
30-16s-10w Ellsworth,KS
Lillie #3-30
 Job Ticket: 62957 **DST#: 2**
 Test Start: 2015.10.19 @ 04:10:00

GENERAL INFORMATION:

Formation: **LKC G**
 Deviated: No Whipstock: ft (KB)
 Time Tool Opened: 05:14:49
 Time Test Ended: 09:02:12
 Interval: **3125.00 ft (KB) To 3160.00 ft (KB) (TVD)**
 Total Depth: 3160.00 ft (KB) (TVD)
 Hole Diameter: 7.88 inches Hole Condition: Fair
 Test Type: Conventional Bottom Hole (Initial)
 Tester: Jared Scheck
 Unit No: 55
 Reference Elevations: 1890.00 ft (KB)
 1882.00 ft (CF)
 KB to GR/CF: 8.00 ft

Serial #: 6999 Inside
 Press@RunDepth: 410.31 psig @ 3130.00 ft (KB) Capacity: 8000.00 psig
 Start Date: 2015.10.19 End Date: 2015.10.19 Last Calib.: 2015.10.19
 Start Time: 04:10:01 End Time: 09:02:11 Time On Btm: 2015.10.19 @ 05:14:29
 Time Off Btm: 2015.10.19 @ 07:32:33

TEST COMMENT: IFP-30 Minutes-Very weak surface blow built 1/8" stayed steady throughout open
 ISIP-30 Minutes-No blow back
 FFP-30 Minutes-Very weak surface blow died off 10 minutes into open
 FSIP-45 Minutes-No blow back



PRESSURE SUMMARY

Time (Min.)	Pressure (psig)	Temp (deg F)	Annotation
0	1544.93	96.32	Initial Hydro-static
1	97.71	95.72	Open To Flow (1)
34	477.77	96.64	Shut-In(1)
61	472.17	97.46	End Shut-In(1)
61	81.78	97.32	Open To Flow (2)
93	410.31	98.49	Shut-In(2)
138	455.50	99.79	End Shut-In(2)
139	1491.87	100.07	Final Hydro-static

Recovery

Length (ft)	Description	Volume (bbl)
1.00	mud	0.00

Gas Rates

Choke (inches)	Pressure (psig)	Gas Rate (Mcf/d)



TRILOBITE TESTING, INC.

DRILL STEM TEST REPORT

American Warrior Inc
3118 Cummings Rd
Garden City KS, 67846
ATTN: Luke Thompson

30-16s-10w Ellsworth, KS
Lillie #3-30
Job Ticket: 62957 **DST#: 2**
Test Start: 2015.10.19 @ 04:10:00

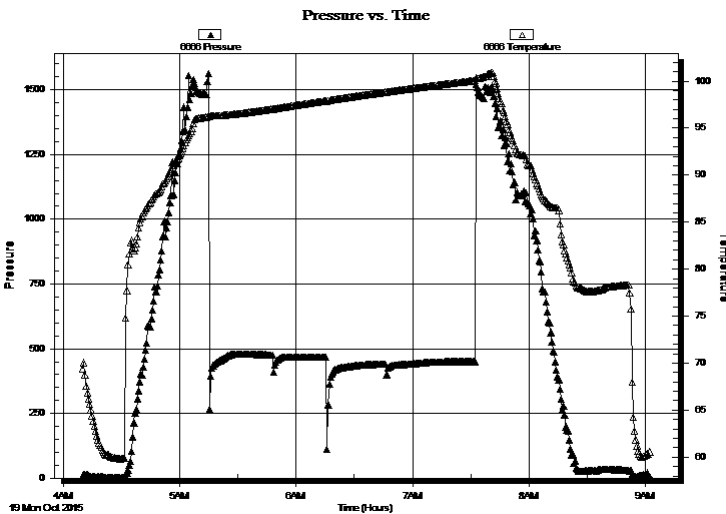
GENERAL INFORMATION:

Formation: **LKC G**
Deviated: No Whipstock: ft (KB)
Time Tool Opened: 05:14:49
Time Test Ended: 09:02:12
Interval: **3125.00 ft (KB) To 3160.00 ft (KB) (TVD)**
Total Depth: 3160.00 ft (KB) (TVD)
Hole Diameter: 7.88 inches Hole Condition: Fair
Test Type: Conventional Bottom Hole (Initial)
Tester: Jared Scheck
Unit No: 55
Reference Elevations: 1890.00 ft (KB)
1882.00 ft (CF)
KB to GR/CF: 8.00 ft

Serial #: 6666 Outside

Press@RunDepth: psig @ 3131.00 ft (KB) Capacity: 8000.00 psig
Start Date: 2015.10.19 End Date: 2015.10.19 Last Calib.: 2015.10.19
Start Time: 04:10:01 End Time: 09:02:33 Time On Btm:
Time Off Btm:

TEST COMMENT: IFP-30 Minutes-Very weak surface blow built 1/8" stayed steady throughout open
ISIP-30 Minutes-No blow back
FFP-30 Minutes-Very weak surface blow died off 10 minutes into open
FSIP-45 Minutes-No blow back



PRESSURE SUMMARY

Time (Min.)	Pressure (psig)	Temp (deg F)	Annotation

Recovery

Length (ft)	Description	Volume (bbl)
1.00	mud	0.00

Gas Rates

Choke (inches)	Pressure (psig)	Gas Rate (Mcf/d)



**TRILOBITE
TESTING, INC**

DRILL STEM TEST REPORT

TOOL DIAGRAM

American Warrior Inc

30-16s-10w Ellsworth,KS

3118 Cummings Rd
Garden City KS, 67846

Lillie #3-30

Job Ticket: 62957

DST#: 2

ATTN: Luke Thompson

Test Start: 2015.10.19 @ 04:10:00

Tool Information

Drill Pipe:	Length: 2824.00 ft	Diameter: 3.80 inches	Volume: 39.61 bbl	Tool Weight:	1000.00 lb
Heavy Wt. Pipe:	Length: 300.00 ft	Diameter: 2.25 inches	Volume: 1.48 bbl	Weight set on Packer:	20000.00 lb
Drill Collar:	Length: 0.00 ft	Diameter: 0.00 inches	Volume: 0.00 bbl	Weight to Pull Loose:	55000.00 lb
			<u>Total Volume: 41.09 bbl</u>	Tool Chased	0.00 ft
Drill Pipe Above KB:	27.00 ft			String Weight: Initial	45000.00 lb
Depth to Top Packer:	3125.00 ft			Final	25000.00 lb
Depth to Bottom Packer:	ft				
Interval between Packers:	35.00 ft				
Tool Length:	63.00 ft				
Number of Packers:	2	Diameter: 6.75 inches			

Tool Comments:

Tool Description

Tool Description	Length (ft)	Serial No.	Position	Depth (ft)	Accum. Lengths
Shut In Tool	5.00			3102.00	
Hydraulic tool	5.00			3107.00	
Jars	6.00			3113.00	
Safety Joint	2.00			3115.00	
Packer	5.00			3120.00	28.00 Bottom Of Top Packer
Packer	5.00			3125.00	
Anchor	4.00			3129.00	
Recorder	1.00	6999	Inside	3130.00	
Recorder	1.00	6666	Outside	3131.00	
Anchor	25.00			3156.00	
Bullnose	4.00			3160.00	35.00 Bottom Packers & Anchor

Total Tool Length: 63.00



**TRILOBITE
TESTING, INC**

DRILL STEM TEST REPORT

FLUID SUMMARY

American Warrior Inc

30-16s-10w Ellsworth,KS

3118 Cummings Rd
Garden City KS, 67846

Lillie #3-30

Job Ticket: 62957

DST#: 2

ATTN: Luke Thompson

Test Start: 2015.10.19 @ 04:10:00

Mud and Cushion Information

Mud Type: Gel Chem

Cushion Type:

Oil API:

deg API

Mud Weight: 9.00 lb/gal

Cushion Length:

ft

Water Salinity:

ppm

Viscosity: 56.00 sec/qt

Cushion Volume:

bbbl

Water Loss: 8.78 in³

Gas Cushion Type:

Resistivity: ohm.m

Gas Cushion Pressure:

psig

Salinity: 6000.00 ppm

Filter Cake: 1.00 inches

Recovery Information

Recovery Table

Length ft	Description	Volume bbl
1.00	mud	0.005

Total Length: 1.00 ft Total Volume: 0.005 bbl

Num Fluid Samples: 0

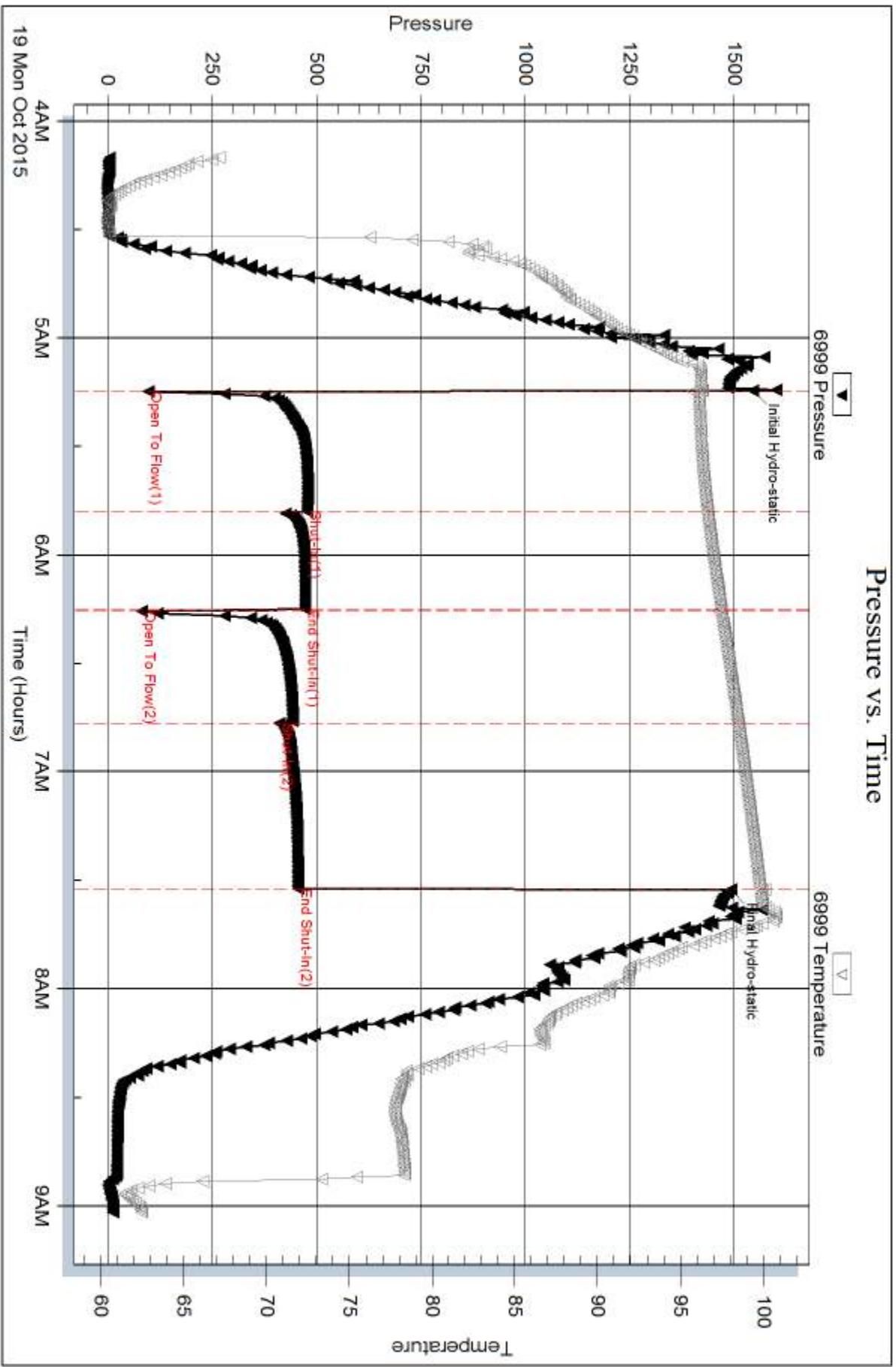
Num Gas Bombs: 0

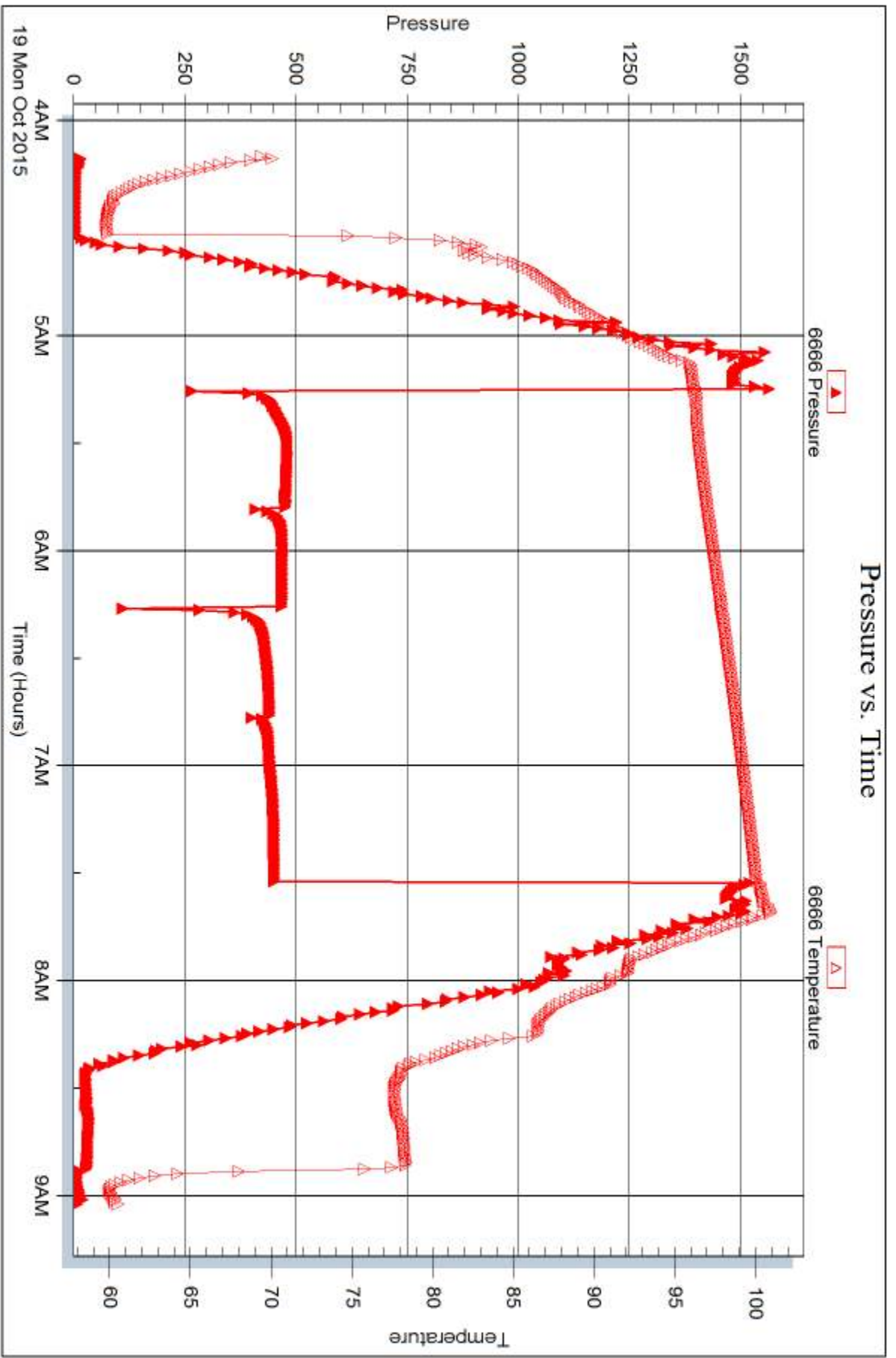
Serial #:

Laboratory Name:

Laboratory Location:

Recovery Comments:







DRILL STEM TEST REPORT

Prepared For: **American Warrior Inc**

3118 Cummings Rd
Garden City KS, 67846

ATTN: Luke Thompson

Lillie #3-30

30-16s-10w Ellsworth,KS

Start Date: 2015.10.19 @ 11:50:00

End Date: 2015.10.19 @ 17:31:47

Job Ticket #: 62958 DST #: 3

Trilobite Testing, Inc
1515 Commerce Parkway Hays, KS 67601
ph: 785-625-4778 fax: 785-625-5620

Printed: 2015.10.22 @ 13:17:22



**TRILOBITE
TESTING, INC**

DRILL STEM TEST REPORT

American Warrior Inc
3118 Cummings Rd
Garden City KS, 67846
ATTN: Luke Thompson

30-16s-10w Ellsworth,KS

Lillie #3-30

Job Ticket: 62958

DST#: 3

Test Start: 2015.10.19 @ 11:50:00

GENERAL INFORMATION:

Formation: **LKC G**
 Deviated: No Whipstock: ft (KB)
 Time Tool Opened: 13:03:31
 Time Test Ended: 17:31:47
 Interval: **3126.00 ft (KB) To 3160.00 ft (KB) (TVD)**
 Total Depth: 3160.00 ft (KB) (TVD)
 Hole Diameter: 7.88 inches Hole Condition: Fair
 Test Type: Conventional Bottom Hole (Initial)
 Tester: Jared Scheck
 Unit No: 55-Great Bend-48 rt
 Reference Elevations: 1890.00 ft (KB)
 1882.00 ft (CF)
 KB to GR/CF: 8.00 ft

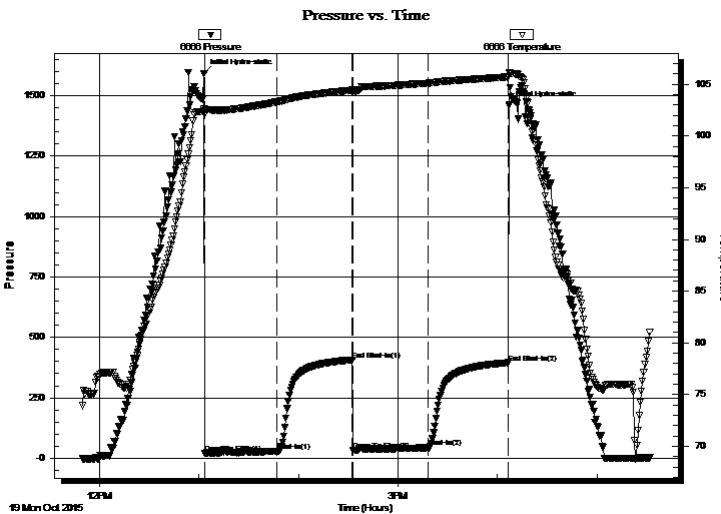
Serial #: 6666

Inside

Press@RunDepth: 43.51 psig @ 3130.00 ft (KB) Capacity: 8000.00 psig
 Start Date: 2015.10.19 End Date: 2015.10.19 Last Calib.: 2015.10.19
 Start Time: 11:50:01 End Time: 17:31:48 Time On Btm: 2015.10.19 @ 13:03:10
 Time Off Btm: 2015.10.19 @ 16:06:52

TEST COMMENT: IFP-45 Minutes-Very weak surface blow built 3/4"
 ISIP-45 Minutes-No blow back
 FFP-45 Minutes-
 FSIP-45 Minutes

PRESSURE SUMMARY



Time (Min.)	Pressure (psig)	Temp (deg F)	Annotation
0	1590.27	102.68	Initial Hydro-static
1	19.69	102.07	Open To Flow (1)
45	28.32	103.29	Shut-In(1)
90	407.14	104.43	End Shut-In(1)
90	32.09	104.29	Open To Flow (2)
135	43.51	105.10	Shut-In(2)
184	395.28	105.71	End Shut-In(2)
184	1457.97	106.14	Final Hydro-static

Recovery

Length (ft)	Description	Volume (bbl)
60.00	MW 60%w ater 40%mud	0.30

Gas Rates

	Choke (inches)	Pressure (psig)	Gas Rate (Mcf/d)



**TRILOBITE
TESTING, INC**

DRILL STEM TEST REPORT

TOOL DIAGRAM

American Warrior Inc

30-16s-10w Ellsworth,KS

3118 Cummings Rd
Garden City KS, 67846

Lillie #3-30

Job Ticket: 62958

DST#: 3

ATTN: Luke Thompson

Test Start: 2015.10.19 @ 11:50:00

Tool Information

Drill Pipe:	Length: 2824.00 ft	Diameter: 3.80 inches	Volume: 39.61 bbl	Tool Weight:	1000.00 lb
Heavy Wt. Pipe:	Length: 300.00 ft	Diameter: 2.25 inches	Volume: 1.48 bbl	Weight set on Packer:	20000.00 lb
Drill Collar:	Length: 0.00 ft	Diameter: 0.00 inches	Volume: 0.00 bbl	Weight to Pull Loose:	lb
			<u>Total Volume: 41.09 bbl</u>	Tool Chased	0.00 ft
Drill Pipe Above KB:	26.00 ft			String Weight: Initial	45000.00 lb
Depth to Top Packer:	3126.00 ft			Final	lb
Depth to Bottom Packer:	ft				
Interval between Packers:	34.00 ft				
Tool Length:	62.00 ft				
Number of Packers:	2	Diameter: 6.75 inches			

Tool Comments:

Tool Description	Length (ft)	Serial No.	Position	Depth (ft)	Accum. Lengths
------------------	-------------	------------	----------	------------	----------------

Shut In Tool	5.00			3103.00	
Hydraulic tool	5.00			3108.00	
Jars	6.00			3114.00	
Safety Joint	2.00			3116.00	
Packer	5.00			3121.00	28.00 Bottom Of Top Packer
Packer	5.00			3126.00	
Anchor	3.00			3129.00	
Recorder	1.00	6666	Inside	3130.00	
Recorder	1.00	8319	Outside	3131.00	
Anchor	25.00			3156.00	
Bullnose	4.00			3160.00	34.00 Bottom Packers & Anchor

Total Tool Length: 62.00



**TRILOBITE
TESTING, INC**

DRILL STEM TEST REPORT

FLUID SUMMARY

American Warrior Inc

30-16s-10w Ellsworth,KS

3118 Cummings Rd
Garden City KS, 67846

Lillie #3-30

Job Ticket: 62958

DST#: 3

ATTN: Luke Thompson

Test Start: 2015.10.19 @ 11:50:00

Mud and Cushion Information

Mud Type: Gel Chem

Cushion Type:

Oil API:

deg API

Mud Weight: 9.00 lb/gal

Cushion Length:

ft

Water Salinity:

18000 ppm

Viscosity: 49.00 sec/qt

Cushion Volume:

bbbl

Water Loss: 10.37 in³

Gas Cushion Type:

Resistivity: ohm.m

Gas Cushion Pressure:

psig

Salinity: 8000.00 ppm

Filter Cake: 1.00 inches

Recovery Information

Recovery Table

Length ft	Description	Volume bbl
60.00	MW 60%water 40%mud	0.295

Total Length: 60.00 ft Total Volume: 0.295 bbl

Num Fluid Samples: 0

Num Gas Bombs: 0

Serial #:

Laboratory Name:

Laboratory Location:

Recovery Comments:

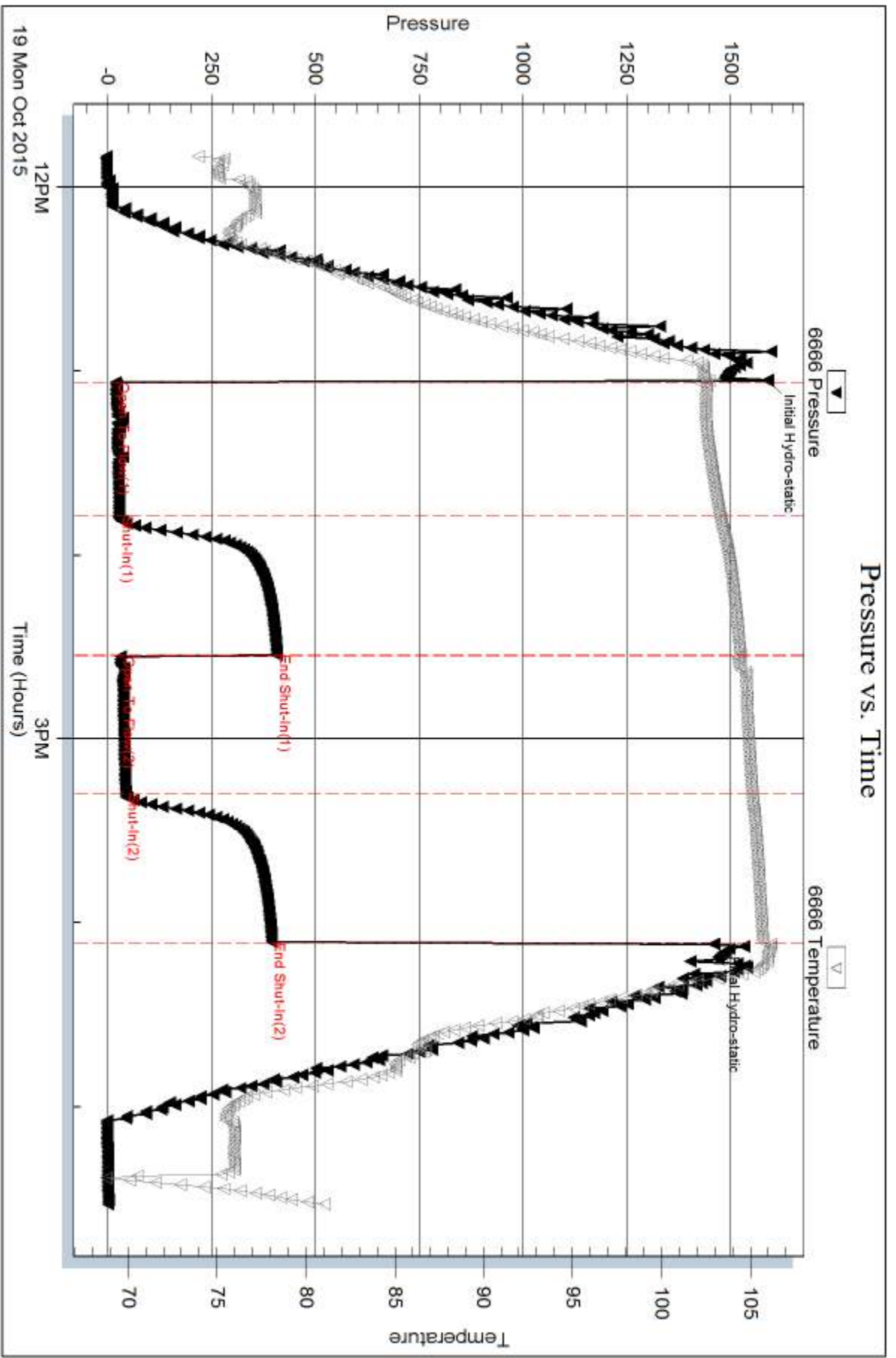
Serial #: 6666

Inside

American Warrior Inc

Lille #3-30

DST Test Number: 3



Trilobite Testing, Inc

Ref. No: 62958

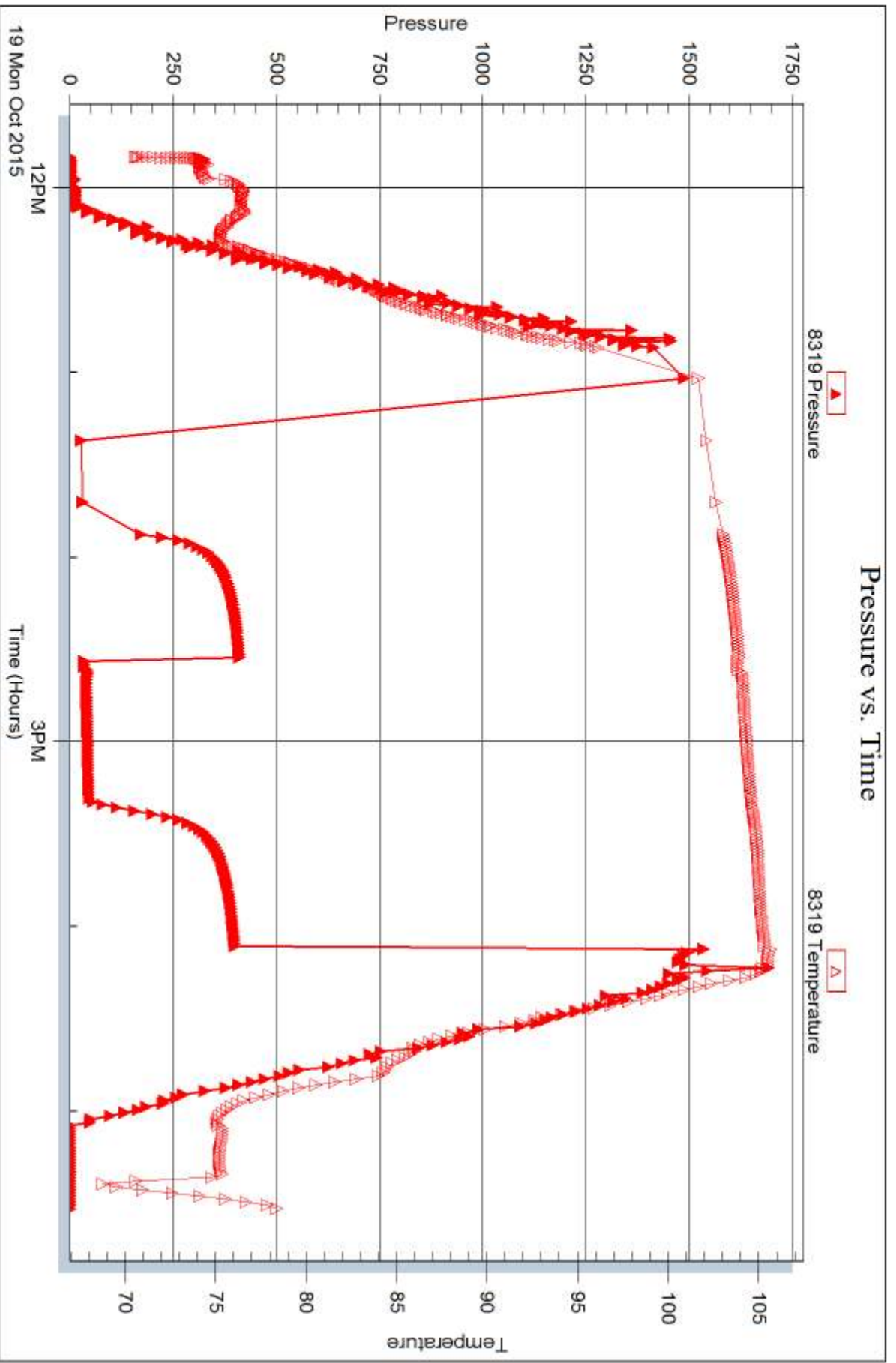
Printed: 2015.10.22 @ 13:17:23

Serial #: 8319

Outside American Warrior Inc

Lille #3-30

DST Test Number: 3



Triobite Testing, Inc

Ref. No: 62958

Printed: 2015.10.22 @ 13:17:23



DRILL STEM TEST REPORT

Prepared For: **American Warrior Inc**

3118 Cummings Rd
Garden City KS, 67846

ATTN: Luke Thompson

Lillie #3-30

30-16s-10w Ellsworth,KS

Start Date: 2015.10.20 @ 02:59:00

End Date: 2015.10.20 @ 08:52:04

Job Ticket #: 62959 DST #: 4

Trilobite Testing, Inc
1515 Commerce Parkway Hays, KS 67601
ph: 785-625-4778 fax: 785-625-5620

Printed: 2015.10.22 @ 13:16:38



**TRILOBITE
TESTING, INC**

DRILL STEM TEST REPORT

American Warrior Inc
3118 Cummings Rd
Garden City KS, 67846
ATTN: Luke Thompson

30-16s-10w Ellsworth,KS

Lillie #3-30

Job Ticket: 62959

DST#: 4

Test Start: 2015.10.20 @ 02:59:00

GENERAL INFORMATION:

Formation: **LKC H-J**
 Deviated: No Whipstock: ft (KB)
 Time Tool Opened: 04:04:48
 Time Test Ended: 08:52:04
 Interval: **3163.00 ft (KB) To 3240.00 ft (KB) (TVD)**
 Total Depth: 3240.00 ft (KB) (TVD)
 Hole Diameter: 7.88 inches Hole Condition: Fair
 Test Type: Conventional Bottom Hole (Initial)
 Tester: Jared Scheck
 Unit No: 55
 Reference Elevations: 1890.00 ft (KB)
 1882.00 ft (CF)
 KB to GR/CF: 8.00 ft

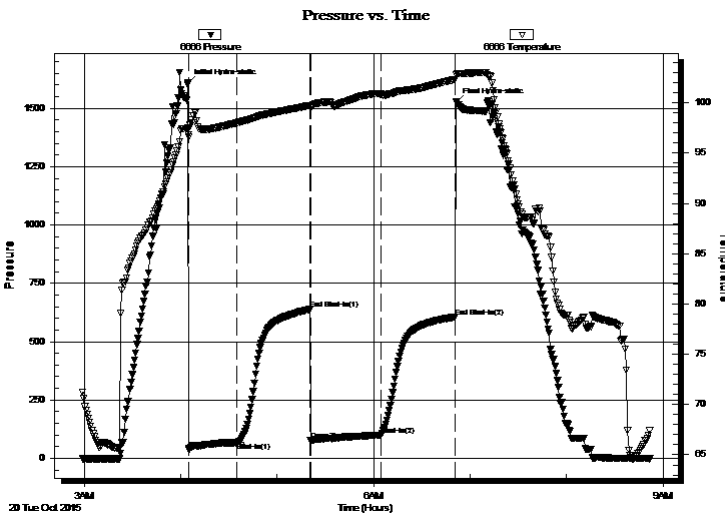
Serial #: 6666

Inside

Press@RunDepth: 99.97 psig @ 3200.00 ft (KB) Capacity: 8000.00 psig
 Start Date: 2015.10.20 End Date: 2015.10.20 Last Calib.: 2015.10.20
 Start Time: 02:59:01 End Time: 08:52:03 Time On Btm: 2015.10.20 @ 04:04:35
 Time Off Btm: 2015.10.20 @ 06:51:13

TEST COMMENT: IFP-30 Minutes-Weak blow built 6"
 ISIP-45 Minutes-No blow back
 FFP-45 Minutes-Weak blow built 6"
 FSIP-45 Minutes-No blow back

PRESSURE SUMMARY



Time (Min.)	Pressure (psig)	Temp (deg F)	Annotation
0	1607.72	97.34	Initial Hydro-static
1	38.67	96.59	Open To Flow (1)
31	69.49	98.01	Shut-In(1)
76	638.08	99.74	End Shut-In(1)
77	75.24	99.61	Open To Flow (2)
121	99.97	100.85	Shut-In(2)
166	605.15	102.32	End Shut-In(2)
167	1526.42	102.77	Final Hydro-static

Recovery

Length (ft)	Description	Volume (bbl)
60.00	OGM 5%gas 5%oil 90%mud	0.30
60.00	OGM 15%gas 5%oil 80%mud	0.30
35.00	OGM 20%gas 10%oil 70%mud	0.17
0.00	25 feet gas in pipe	0.00

Gas Rates

	Choke (inches)	Pressure (psig)	Gas Rate (Mcf/d)



**TRILOBITE
TESTING, INC**

DRILL STEM TEST REPORT

TOOL DIAGRAM

American Warrior Inc

30-16s-10w Ellsworth,KS

3118 Cummings Rd
Garden City KS, 67846

Lillie #3-30

Job Ticket: 62959

DST#: 4

ATTN: Luke Thompson

Test Start: 2015.10.20 @ 02:59:00

Tool Information

Drill Pipe:	Length: 2853.00 ft	Diameter: 3.80 inches	Volume: 40.02 bbl	Tool Weight: 1000.00 lb
Heavy Wt. Pipe:	Length: 300.00 ft	Diameter: 2.25 inches	Volume: 1.48 bbl	Weight set on Packer: 20000.00 lb
Drill Collar:	Length: 0.00 ft	Diameter: 0.00 inches	Volume: 0.00 bbl	Weight to Pull Loose: 60000.00 lb
			<u>Total Volume: 41.50 bbl</u>	Tool Chased 0.00 ft
Drill Pipe Above KB:	18.00 ft			String Weight: Initial 47000.00 lb
Depth to Top Packer:	3163.00 ft			Final 47000.00 lb
Depth to Bottom Packer:	ft			
Interval between Packers:	77.00 ft			
Tool Length:	105.00 ft			
Number of Packers:	2	Diameter: 6.75 inches		

Tool Comments:

Tool Description

Tool Description	Length (ft)	Serial No.	Position	Depth (ft)	Accum. Lengths
Shut In Tool	5.00			3140.00	
Hydraulic tool	5.00			3145.00	
Jars	6.00			3151.00	
Safety Joint	2.00			3153.00	
Packer	5.00			3158.00	28.00 Bottom Of Top Packer
Packer	5.00			3163.00	
Anchor	3.00			3166.00	
Change Over Sub	0.75			3166.75	
Drill Pipe	31.50			3198.25	
Change Over Sub	0.75			3199.00	
Recorder	1.00	6666	Inside	3200.00	
Recorder	1.00	8319	Outside	3201.00	
Anchor	35.00			3236.00	
Bullnose	4.00			3240.00	77.00 Bottom Packers & Anchor

Total Tool Length: 105.00



**TRILOBITE
TESTING, INC**

DRILL STEM TEST REPORT

FLUID SUMMARY

American Warrior Inc

30-16s-10w Ellsworth,KS

3118 Cummings Rd
Garden City KS, 67846

Lillie #3-30

Job Ticket: 62959

DST#: 4

ATTN: Luke Thompson

Test Start: 2015.10.20 @ 02:59:00

Mud and Cushion Information

Mud Type: Gel Chem

Cushion Type:

Oil API:

deg API

Mud Weight: 9.00 lb/gal

Cushion Length:

ft

Water Salinity:

ppm

Viscosity: 49.00 sec/qt

Cushion Volume:

bbbl

Water Loss: 10.38 in³

Gas Cushion Type:

Resistivity: ohm.m

Gas Cushion Pressure:

psig

Salinity: 8000.00 ppm

Filter Cake: 1.00 inches

Recovery Information

Recovery Table

Length ft	Description	Volume bbbl
60.00	OGM 5%gas 5%oil 90%mud	0.295
60.00	OGM 15%gas 5%oil 80%mud	0.295
35.00	OGM 20%gas 10%oil 70%mud	0.172
0.00	25 feet gas in pipe	0.000

Total Length: 155.00 ft

Total Volume: 0.762 bbl

Num Fluid Samples: 0

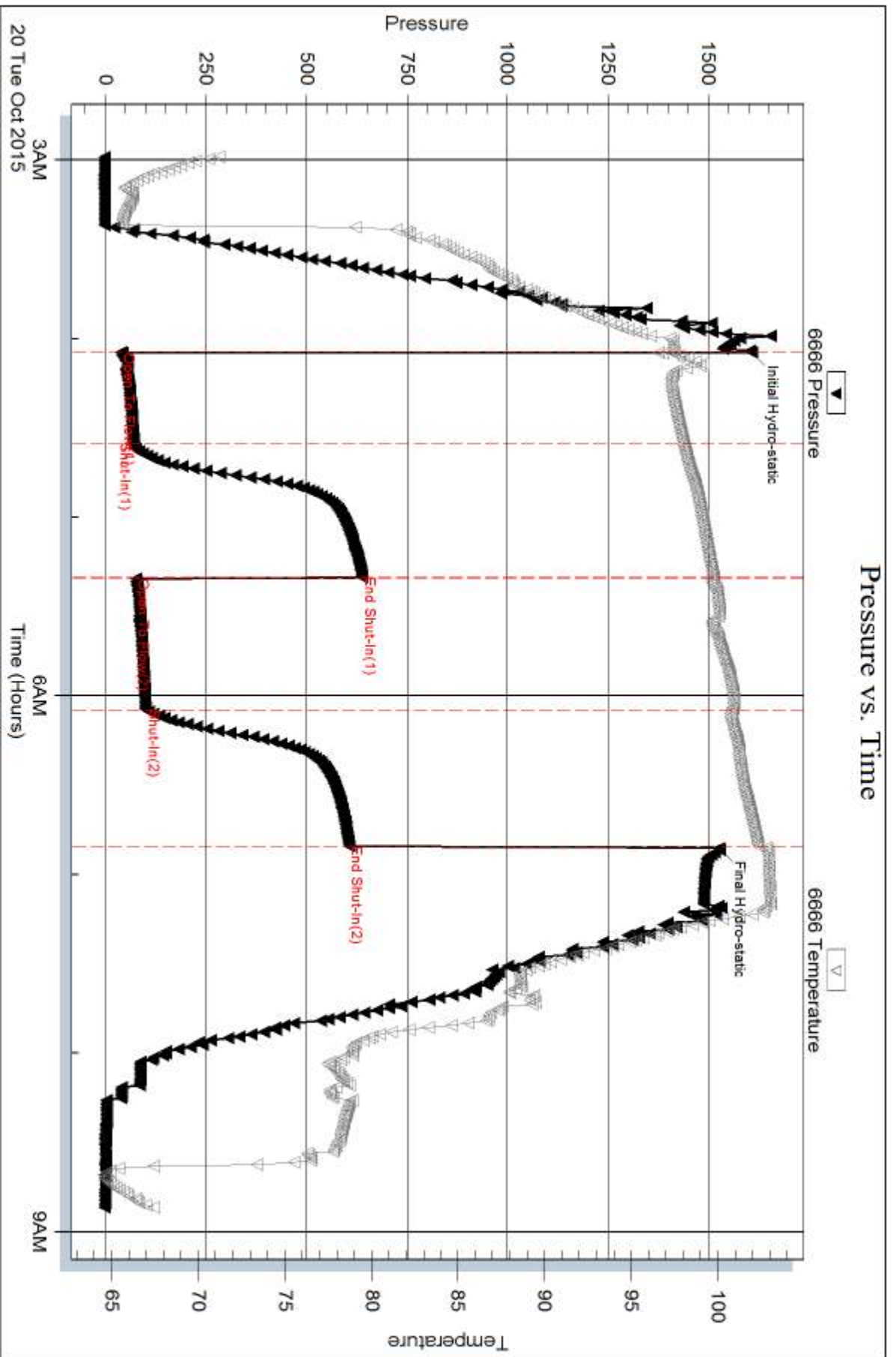
Num Gas Bombs: 0

Serial #:

Laboratory Name:

Laboratory Location:

Recovery Comments:

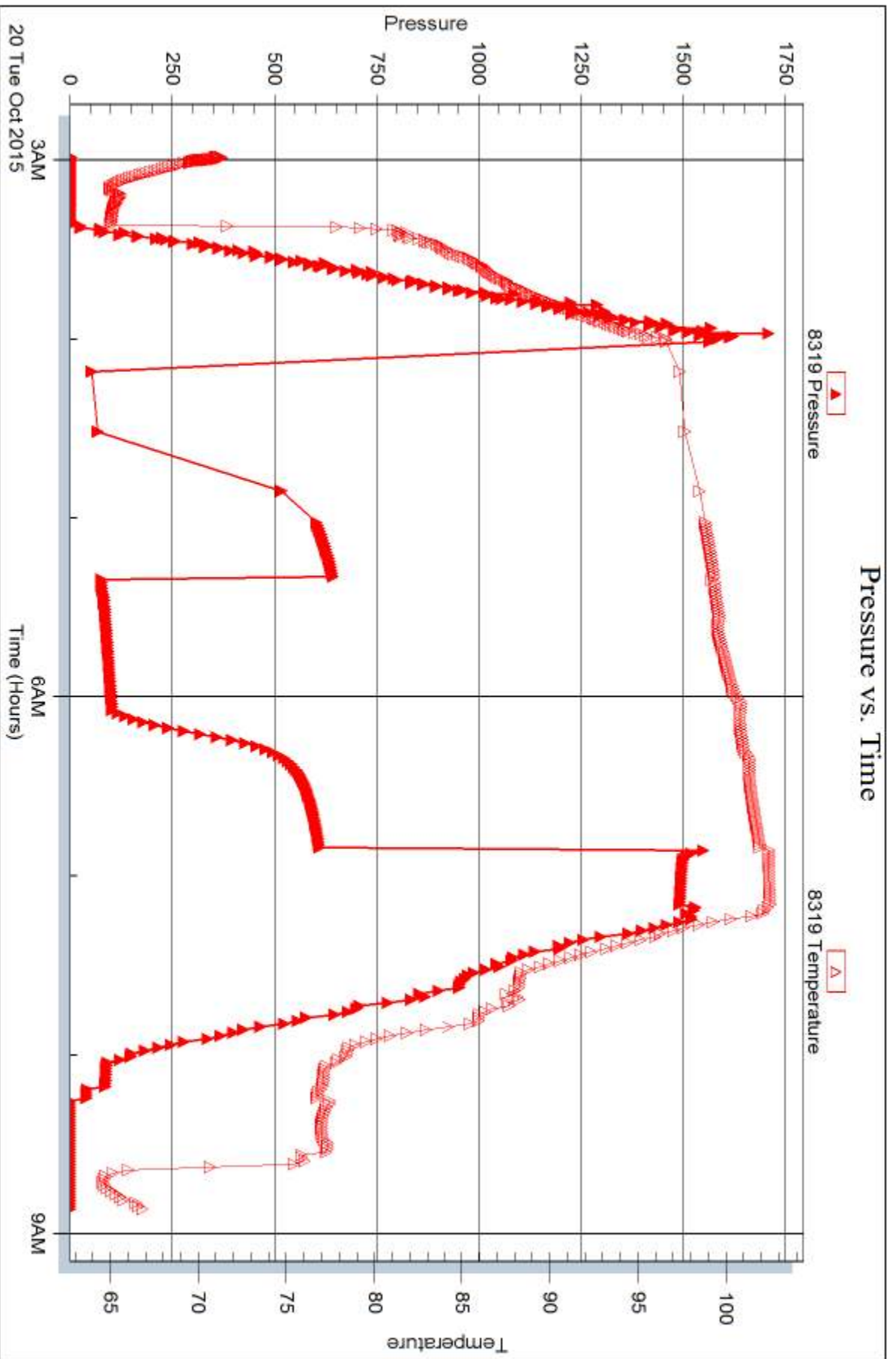


Serial #: 8319

Outside American Warrior Inc

Lille #3-30

DST Test Number: 4



Trickle Testing, Inc

Ref. No: 62959

Printed: 2015.10.22 @ 13:16:39



DRILL STEM TEST REPORT

Prepared For: **American Warrior Inc**

3118 Cummings Rd
Garden City KS, 67846

ATTN: Luke Thompson

Lillie #3-30

30-16s-10w Ellsworth,KS

Start Date: 2015.10.21 @ 13:40:00

End Date: 2015.10.21 @ 20:13:00

Job Ticket #: 62960 DST #: 5

Trilobite Testing, Inc
1515 Commerce Parkway Hays, KS 67601
ph: 785-625-4778 fax: 785-625-5620

Printed: 2015.10.22 @ 13:16:22



TRILOBITE TESTING, INC.

DRILL STEM TEST REPORT

American Warrior Inc
 3118 Cummings Rd
 Garden City KS, 67846
 ATTN: Luke Thompson

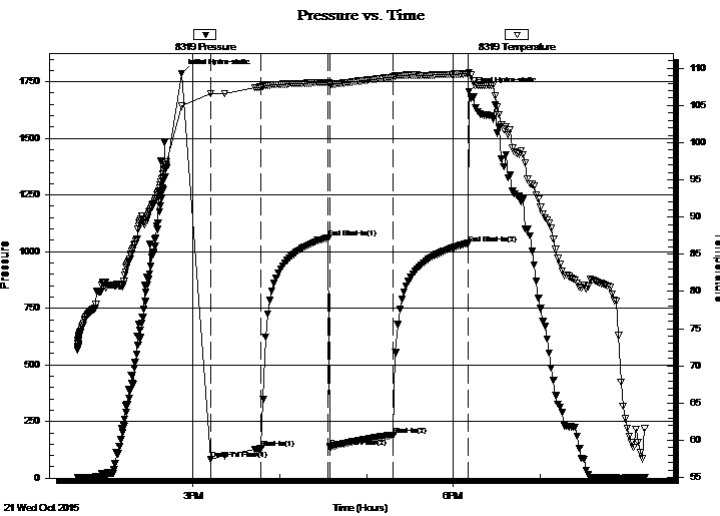
30-16s-10w Ellsworth,KS
Lillie #3-30
 Job Ticket: 62960 **DST#: 5**
 Test Start: 2015.10.21 @ 13:40:00

GENERAL INFORMATION:

Formation: **Arbuckle**
 Deviated: No Whipstock: ft (KB)
 Time Tool Opened: 15:12:00
 Time Test Ended: 20:13:00
 Interval: **3334.00 ft (KB) To 3500.00 ft (KB) (TVD)**
 Total Depth: 3500.00 ft (KB) (TVD)
 Hole Diameter: 7.88 inches Hole Condition: Fair
 Test Type: Conventional Straddle (Initial)
 Tester: Jared Scheck
 Unit No: 55
 Reference Elevations: 1890.00 ft (KB)
 1882.00 ft (CF)
 KB to GR/CF: 8.00 ft

Serial #: 8319 Outside
 Press@RunDepth: 189.03 psig @ 3411.50 ft (KB) Capacity: 8000.00 psig
 Start Date: 2015.10.21 End Date: 2015.10.21 Last Calib.: 2015.10.21
 Start Time: 13:40:01 End Time: 20:13:00 Time On Btm: 2015.10.21 @ 14:52:00
 Time Off Btm: 2015.10.21 @ 18:11:00

TEST COMMENT: IFP-45 Minutes-Weak building blow built 5 1/2"
 ISIP-45 Minutes-No blow back
 FFP-45 Minutes-Weak blow built 3"
 FSIP-45 Minutes-No blow back



PRESSURE SUMMARY

Time (Min.)	Pressure (psig)	Temp (deg F)	Annotation
0	1787.21	104.93	Initial Hydro-static
20	83.93	106.56	Open To Flow (1)
55	129.84	107.47	Shut-In(1)
102	1061.81	108.13	End Shut-In(1)
103	137.27	107.87	Open To Flow (2)
147	189.03	108.81	Shut-In(2)
198	1036.12	109.26	End Shut-In(2)
199	1705.90	109.45	Final Hydro-static

Recovery

Length (ft)	Description	Volume (bbl)
180.00	OWM 5%oil 25%w ater 70%mud	0.89
120.00	OWM 5%oil 10%w ater 85%mud	0.59

Gas Rates

	Choke (inches)	Pressure (psig)	Gas Rate (Mcf/d)



**TRILOBITE
TESTING, INC**

DRILL STEM TEST REPORT

TOOL DIAGRAM

American Warrior Inc

30-16s-10w Ellsworth,KS

3118 Cummings Rd
Garden City KS, 67846

Lillie #3-30

Job Ticket: 62960

DST#: 5

ATTN: Luke Thompson

Test Start: 2015.10.21 @ 13:40:00

Tool Information

Drill Pipe:	Length: 3040.00 ft	Diameter: 3.80 inches	Volume: 42.64 bbl	Tool Weight: 1000.00 lb
Heavy Wt. Pipe:	Length: 300.00 ft	Diameter: 2.25 inches	Volume: 1.48 bbl	Weight set on Packer: 20000.00 lb
Drill Collar:	Length: 0.00 ft	Diameter: 0.00 inches	Volume: 0.00 bbl	Weight to Pull Loose: 60000.00 lb
			<u>Total Volume: 44.12 bbl</u>	Tool Chased 0.00 ft
Drill Pipe Above KB:	34.00 ft			String Weight: Initial 48000.00 lb
Depth to Top Packer:	3334.00 ft			Final 48000.00 lb
Depth to Bottom Packer:	3412.00 ft			
Interval between Packers:	78.00 ft			
Tool Length:	197.50 ft			
Number of Packers:	3	Diameter: 6.75 inches		

Tool Comments:

Tool Description	Length (ft)	Serial No.	Position	Depth (ft)	Accum. Lengths
------------------	-------------	------------	----------	------------	----------------

Shut In Tool	5.00			3311.00	
Hydraulic tool	5.00			3316.00	
Jars	6.00			3322.00	
Safety Joint	2.00			3324.00	
Packer	5.00			3329.00	28.00 Bottom Of Top Packer
Packer	5.00			3334.00	
Anchor	11.00			3345.00	
Change Over Sub	0.75			3345.75	
Drill Pipe	63.00			3408.75	
Change Over Sub	0.75			3409.50	
Recorder	1.00	6666	Inside	3410.50	
Recorder	1.00	8319	Outside	3411.50	
Blank Off Sub	0.50			3412.00	78.00 Tool Interval
Packer	5.00			3417.00	
Perforations	17.00			3434.00	
Recorder	1.00	6999	Below	3435.00	
Change Over Sub	0.75			3435.75	
Drill Pipe	63.00			3498.75	
Change Over Sub	0.75			3499.50	
Bullnose	4.00			3503.50	91.50 Bottom Packers & Anchor

Total Tool Length: 197.50



**TRILOBITE
TESTING, INC**

DRILL STEM TEST REPORT

FLUID SUMMARY

American Warrior Inc

30-16s-10w Ellsworth,KS

3118 Cummings Rd
Garden City KS, 67846

Lillie #3-30

Job Ticket: 62960

DST#: 5

ATTN: Luke Thompson

Test Start: 2015.10.21 @ 13:40:00

Mud and Cushion Information

Mud Type: Gel Chem

Cushion Type:

Oil API:

deg API

Mud Weight: 9.00 lb/gal

Cushion Length:

ft

Water Salinity:

23000 ppm

Viscosity: 55.00 sec/qt

Cushion Volume:

bbbl

Water Loss: 10.38 in³

Gas Cushion Type:

Resistivity: ohm.m

Gas Cushion Pressure:

psig

Salinity: 7000.00 ppm

Filter Cake: 1.00 inches

Recovery Information

Recovery Table

Length ft	Description	Volume bbbl
180.00	OWM 5%oil 25%water 70%mud	0.885
120.00	OWM 5%oil 10%water 85%mud	0.590

Total Length: 300.00 ft Total Volume: 1.475 bbl

Num Fluid Samples: 0

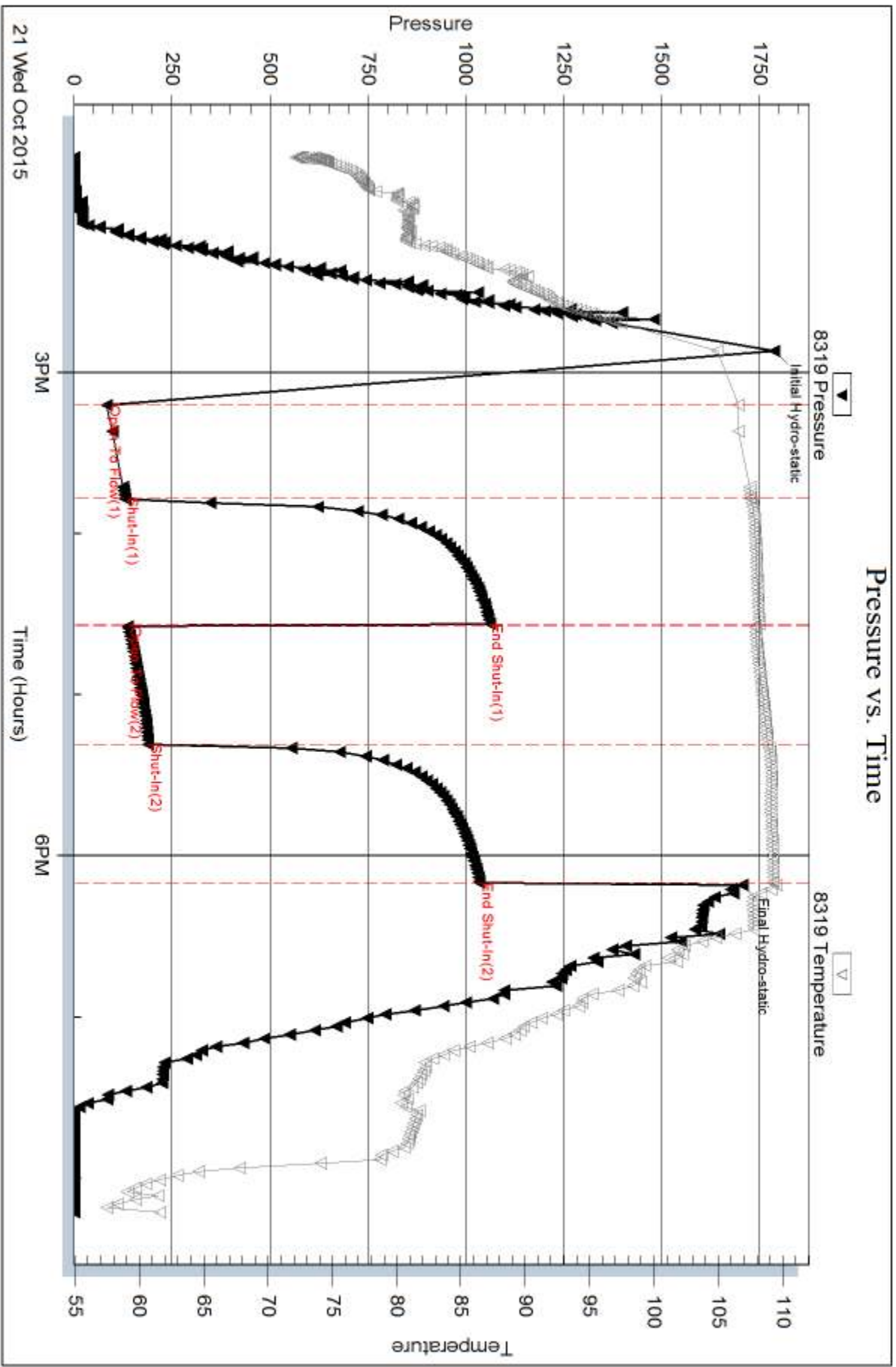
Num Gas Bombs: 0

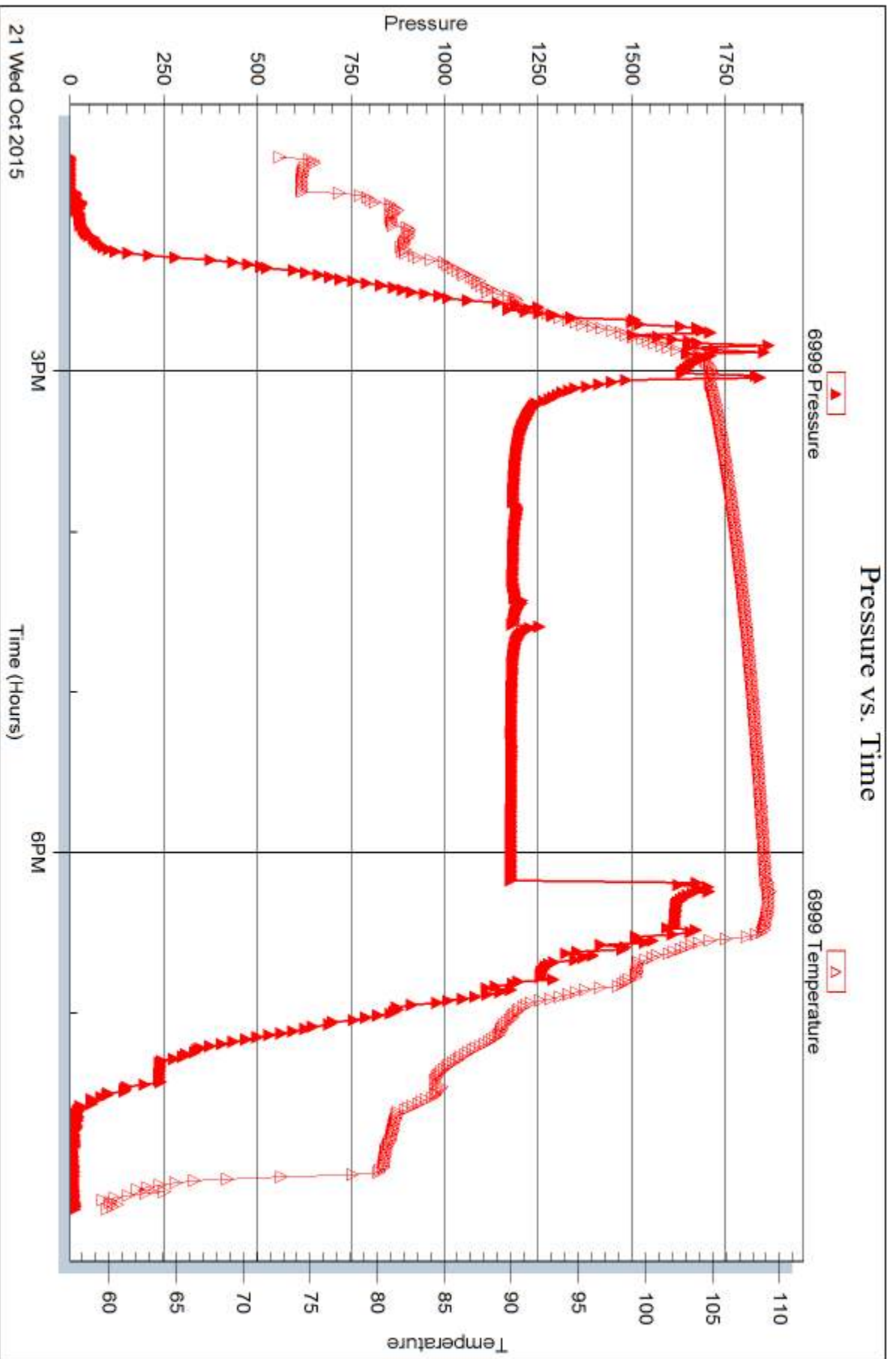
Serial #:

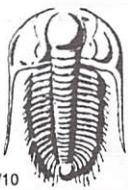
Laboratory Name:

Laboratory Location:

Recovery Comments: rW .2@65degree







TRILOBITE TESTING INC.

1515 Commerce Parkway • Hays, Kansas 67601

Test Ticket

NO. 62956

Well Name & No. Lillie #3-30 Test No. 1 Date 10-18-2015
 Company American Warrior Inc Elevation 1890 KB 1882 GL
 Address 3118 Cummings RD Garden City KS 67846
 Co. Rep / Geo. Luke Thompson Rig Discovery Drilling #2
 Location: Sec. 30 Twp. 16 Rge. 10w Co. Frisworth State KS

Interval Tested 3020-3061 Zone Tested Lansing A-B
 Anchor Length 41 Drill Pipe Run 2699 Mud Wt. 9
 Top Packer Depth 3015 Drill Collars Run - Vis 56
 Bottom Packer Depth 3000 Wt. Pipe Run 300 WL 8.8
 Total Depth 3061 Chlorides 6,000 ppm System LCM

Blow Description IFP - Strong Blow Built Bottom of Bucket in 1 1/2 minutes
ISIP - 1 inch Blow Back
FFP - Strong Blow Built Bottom of Bucket in 5 1/2 minutes
FSIP - 2 inch Blow Back

Rec	Feet of	%gas	%oil	%water	%mud
<u>600</u>	<u>water</u>			<u>90</u>	<u>10</u>
	<u>60,000 chlorides</u>				
<u>2399</u>	<u>feet Gas in pipe</u>				
Rec Total	<u>600 feet fluid 2999 total Return</u>				

Gravity _____ API RW 1 @ 60 ° F Chlorides 60,000 ppm

(A) Initial Hydrostatic 1506 Test 1050 T-On Location 9:30am
 (B) First Initial Flow 111 Jars 250 T-Started 11:20am
 (C) First Final Flow 168 Safety Joint 75 T-Open 12:48
 (D) Initial Shut-In 709 Circ Sub _____ T-Pulled 3:33pm
 (E) Second Initial Flow 203 Hourly Standby _____ T-Out 5:27
 (F) Second Final Flow 305 Mileage 48 Round Trip Great Bend Comments Gas to surface
 (G) Final Shut-In 719 Sampler _____ 2nd open could not
 (H) Final Hydrostatic 1412 Straddle _____ gauge
 Ruined Shale Packer _____
 Ruined Packer _____
 Extra Packer _____
 Extra Recorder _____
 Day Standby _____
 Accessibility _____
 Sub Total 1423

Initial Open 30
 Initial Shut-In 30
 Final Flow 45
 Final Shut-In 60

Sub Total 1423

Approved By _____ Our Representative [Signature]
 TriLOBITE TESTING INC. shall not be liable for damaged of any kind of the property or personnel of the one for whom a test is made, or for any loss suffered or sustained, directly or indirectly, through the use of its equipment, or its statements or opinion concerning the results of any test, tools lost or damaged in the hole shall be paid for at cost by the party for whom the test is made.



TRILOBITE TESTING INC.

1515 Commerce Parkway • Hays, Kansas 67601

Test Ticket

NO. 62957

4/10

Well Name & No. Lillie #3-30 Test No. 2 Date 10-19-2015
 Company American Warrior Inc Elevation 1890 KB 1882 GL
 Address 3118 Cummings RD Garden City KS 67846
 Co. Rep / Geo. Luke Thompson Rig Discovery Drilling Rig #2
 Location: Sec. 30 Twp. 16 Rge. 10w Co. Ellsworth State KS

Interval Tested 3125 - 3160 Zone Tested Lansing G
 Anchor Length 35 Drill Pipe Run _____ Mud Wt. 9
 Top Packer Depth 3120 Drill Collars Run - Vis 56
 Bottom Packer Depth 3125 Wt. Pipe Run 300 WL 8.8
 Total Depth 3160 Chlorides 6000 ppm System LCM _____

Blow Description IIFP - Very Weak Surface Blow Built 1/8 inch and stayed Steady throughout
ISIP - NO Blow Back
FFP - Very Weak Surface Blow Died off 10 minutes into open
ESIP - NO Blow Back

Rec	Feet of	%gas	%oil	%water	%mud
<u>1</u>	<u>mud</u>				
Rec	Feet of	%gas	%oil	%water	%mud
Rec	Feet of	%gas	%oil	%water	%mud
Rec	Feet of	%gas	%oil	%water	%mud
Rec	Feet of	%gas	%oil	%water	%mud

Rec Total _____ BHT _____ Gravity _____ API RW _____ @ _____ °F Chlorides _____ ppm

(A) Initial Hydrostatic <u>1544</u>	<input checked="" type="checkbox"/> Test <u>850</u>	T-On Location <u>4:00 AM</u>
(B) First Initial Flow <u>97</u>	<input checked="" type="checkbox"/> Jars <u>250</u>	T-Started <u>4:10 AM</u>
(C) First Final Flow <u>427</u>	<input checked="" type="checkbox"/> Safety Joint <u>75</u>	T-Open <u>5:15 AM</u>
(D) Initial Shut-In <u>472</u>	<input type="checkbox"/> Circ Sub _____	T-Pulled <u>7:30 AM</u>
(E) Second Initial Flow <u>81</u>	<input type="checkbox"/> Hourly Standby _____	T-Out <u>9:02 AM</u>
(F) Second Final Flow <u>410</u>	<input checked="" type="checkbox"/> Mileage <u>48 Round Trip Great Bend</u>	Comments _____
(G) Final Shut-In <u>455</u>	<input type="checkbox"/> Sampler _____	
(H) Final Hydrostatic <u>1471</u>	<input type="checkbox"/> Straddle _____	<input type="checkbox"/> Ruined Shale Packer _____

Initial Open 30
 Initial Shut-In 30
 Final Flow 30
 Final Shut-In 45

Shale Packer _____
 Extra Packer _____
 Extra Recorder _____
 Day Standby _____
 Accessibility _____

Sub Total 1223

Total 1223
 MP/DST Disc't _____

Approved By _____ Our Representative [Signature]

TriLOBITE TESTING INC. shall not be liable for damaged of any kind of the property or personnel of the one for whom a test is made, or for any loss suffered or sustained, directly or indirectly, through the use of its equipment, or its statements or opinion concerning the results of any test, tools lost or damaged in the hole shall be paid for at cost by the party for whom the test is made.



TRILOBITE TESTING INC.

1515 Commerce Parkway • Hays, Kansas 67601

Test Ticket

NO. 62958

Well Name & No. Lillie #3-30 Test No. 3 Date 10-19-2015
 Company American Warrior Inc Elevation 1890 KB 1882 GL
 Address 3118 Cummings RD Garden City KS 67846
 Co. Rep / Geo. Luke Thompson Rig Discovery Drilling Rig #2
 Location: Sec. 30 Twp. 16 Rge. 10w Co. Ellsworth State KS

Interval Tested 3126 ~~3120~~ - 3160 Zone Tested Lansing G
 Anchor Length 34 Drill Pipe Run _____ Mud Wt. 9.4
 Top Packer Depth - 3121 Drill Collars Run _____ Vis 49
 Bottom Packer Depth 3126 Wt. Pipe Run 300 WL 10.4
 Total Depth 3160 Chlorides 8000 ppm System LCM _____

Blow Description IJP - Very Weak Surface Blow Built 3/4 inch into Bucket
IJIP - NO Blow Back
FFP - Very Weak Surface Surge Flushed Tool good Surge Stayed Steady 1/8 inch
FSIP - NO Blow Back

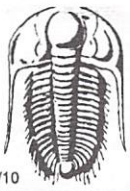
Rec	Feet of	%gas	%oil	%water	%mud
<u>60</u>	<u>MW</u>			<u>60</u>	<u>40</u>
____	____	____	____	____	____
____	____	____	____	____	____
____	____	____	____	____	____

Rec Total 60 BHT _____ Gravity _____ API RW 20.5 @ 60 ° F Chlorides 18,000 ppm
 (A) Initial Hydrostatic 1590 Test 1050 T-On Location 11:30
 (B) First Initial Flow 19 Jars 250 T-Started 11:50
 (C) First Final Flow 29 Safety Joint 75 T-Open 12:50
 (D) Initial Shut-In 407 Circ Sub _____ T-Pulled 3:50
 (E) Second Initial Flow 32 Hourly Standby _____ T-Out 5:31
 (F) Second Final Flow 43 Mileage 48 Round Trip Great Bend Comments Flushed Tool 2nd pass
 (G) Final Shut-In 395 Sampler _____
 (H) Final Hydrostatic 1457 Straddle _____ Ruined Shale Packer _____
 Shale Packer _____ Ruined Packer _____

Initial Open 45 Extra Packer _____ Extra Copies _____
 Initial Shut-In 45 Extra Recorder _____ Sub Total 0
 Final Flow 45 Day Standby _____ Total 1423
 Final Shut-In 45 Accessibility _____ MP/DST Disc't _____
 Sub Total 1423

Approved By _____ Our Representative [Signature]

Trilobite Testing Inc. shall not be liable for damaged of any kind of the property or personnel of the one for whom a test is made, or for any loss suffered or sustained, directly or indirectly, through the use of its equipment, or its statements or opinion concerning the results of any test, tools lost or damaged in the hole shall be paid for at cost by the party for whom the test is made.



TRILOBITE TESTING INC.

1515 Commerce Parkway • Hays, Kansas 67601

Test Ticket

NO. 62959

Well Name & No. Lillie #3-30 Test No. 4 Date 10-20-2015
 Company American Warrior Inc Elevation 1890 KB 1882 GL
 Address 3118 Cummings RD Garden City KS 67846
 Co. Rep / Geo. Luke Thompson Rig Discovery Drilling Rig #2
 Location: Sec. 30 Twp. 16 Rge. 10w Co. Ellsworth State KS

Interval Tested 3163-3240 Zone Tested Lansing H-J
 Anchor Length 77 Drill Pipe Run _____ Mud Wt. 9.3
 Top Packer Depth 3158 Drill Collars Run _____ Vis 49
 Bottom Packer Depth 3163 Wt. Pipe Run 300 WL 10.9
 Total Depth 3240 Chlorides 8,000 ppm System LCM _____

Blow Description IFP-Weak Blow Built binches into Bucket
ISIP- NO Blow Back
FFP- Weak Blow Built binches into Bucket
FSTP- NO Blow Back

Rec	Feet of	%gas	%oil	%water	%mud
<u>60</u>	<u>OGM</u>	<u>50</u>	<u>5</u>	<u>90</u>	
<u>60</u>	<u>OGM</u>	<u>15</u>	<u>5</u>	<u>80</u>	
<u>35</u>	<u>OGM</u>	<u>20</u>	<u>10</u>	<u>70</u>	
<u>25</u>	<u>Gas in pipe</u>				

Rec Total 155 Fluid 190 Total Recovery BHT Gravity _____ API RW _____ @ _____ °F Chlorides _____ ppm

(A) Initial Hydrostatic 1607 Test 1050 T-On Location 2:45
 (B) First Initial Flow 38 Jars 250 T-Started 2:59
 (C) First Final Flow 69 Safety Joint 75 T-Open 4:05
 (D) Initial Shut-In 638 Circ Sub _____ T-Pulled 6:50
 (E) Second Initial Flow 75 Hourly Standby _____ T-Out 8:52
 (F) Second Final Flow 99 Mileage 48 Round Trip Great Bend Comments _____
 (G) Final Shut-In 605 Sampler _____
 (H) Final Hydrostatic 1526 Straddle _____ Ruined Shale Packer _____
 Shale Packer _____ Ruined Packer _____

Initial Open 30 Extra Packer _____ Extra Copies _____
 Initial Shut-In 45 Extra Recorder _____ Sub Total 0
 Final Flow 45 Day Standby _____ Total 1423
 Final Shut-In 45 Accessibility _____ MP/DST Disc't _____
 Sub Total 1423

Approved By _____ Our Representative [Signature]

Trilobite Testing Inc. shall not be liable for damaged of any kind of the property or personnel of the one for whom a test is made, or for any loss suffered or sustained, directly or indirectly, through the use of its equipment, or its statements or opinion concerning the results of any test, tools lost or damaged in the hole shall be paid for at cost by the party for whom the test is made.



TRILOBITE TESTING INC.

1515 Commerce Parkway • Hays, Kansas 67601

Test Ticket

NO. 62960

Well Name & No. Lillie #3-30 Test No. 5 Date 10-21-2015
 Company American Warrior Inc Elevation 1890 KB 1882 GL
 Address 3118 Cummings RD Garden City KS 67846
 Co. Rep / Geo. Luke Thompson Rig Discovery Drilling R. #2
 Location: Sec. _____ Twp. _____ Rge. _____ Co. Ellsworth State KS

Interval Tested 3334-3412 Zone Tested Arbuckle
 Anchor Length 78 Drill Pipe Run 3040 Mud Wt. 9
 Top Packer Depth 3334 Drill Collars Run _____ Vis 55
 Bottom Packer Depth 3412 Wt. Pipe Run 300 WL 10.4
 Total Depth 3500 Chlorides 7000 ppm System LCM _____

Blow Description IJP-Weak Building Blow Built 5 1/2 inches into Bucket
ISIP- NO Blow Back
FFP-Weak Blow Built 3 inches into Bucket
FSIP- NO Blow Back

Rec	Feet of	%gas	%oil	%water	%mud
<u>180</u>	<u>0 W M</u>	<u>5</u>	<u>25</u>	<u>70</u>	
<u>120</u>	<u>0 W M</u>	<u>5</u>	<u>10</u>	<u>85</u>	
	<u>Chlorides 23,000</u>				

Rec Total 300 BHT 109 Gravity _____ API RW -2 @ 65° F Chlorides 23,000 ppm

(A) Initial Hydrostatic 1787 Test 1050 T-On Location 1:15
 (B) First Initial Flow 98 Jars 250 T-Started 1:40
 (C) First Final Flow 129 Safety Joint 75 T-Open 2:47
 (D) Initial Shut-In 1061 Circ Sub _____ T-Pulled 5:47
 (E) Second Initial Flow 137 Hourly Standby _____ T-Out 8:13
 (F) Second Final Flow 189 Mileage 48 Round Trip Great Bend Comments _____
 (G) Final Shut-In 1036 Sampler _____
 (H) Final Hydrostatic 1705 Straddle 600 with shale packer Ruined Shale Packer _____
 Shale Packer 250 Ruined Packer _____
 Extra Packer Shale packer Extra Copies _____
 Extra Recorder 3 all together Sub Total 0
 Day Standby _____ Total 2273
 Accessibility _____ MP/DST Disc't _____
 Sub Total 2273

Approved By _____

Our Representative [Signature]

Trilobite Testing Inc. shall not be liable for damaged of any kind of the property or personnel of the one for whom a test is made, or for any loss suffered or sustained, directly or indirectly, through the use of its equipment, or its statements or opinion concerning the results of any test, tools lost or damaged in the hole shall be paid for at cost by the party for whom the test is made.