

AP#: 15-153-01155-00-00
COMPANY: The Bill Edwards Oil Co
WELL: Sloman in gcr SW 5
LOCATION: 376 E SL E 3915 FEL
SEC: 18 **TWP:** 15 **RGE:** 29W
COUNTY: Rawlins **STATE:** Kansas
OPERATOR: Bill Edwards Oil Co
CONTRACTOR: White Knight Drilling
DATE: 9-3-2015 **TIME:** 5:20 AM
WELL DEPTH: 4384'

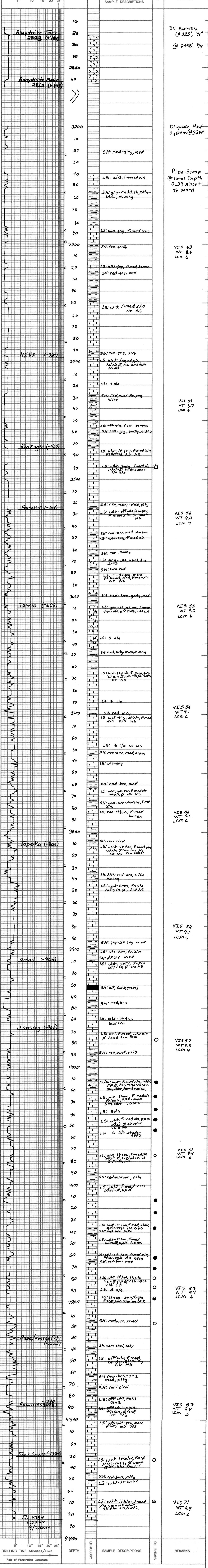
PRODUCTION: Oil
ELEVATION: 3007
DI: 3002

FORMATION TOPS AND STRUCTURAL POSITION:
 ANHYDRITE TOP: 2823' (+188)
 ANHYDRITE BASE: 2862' (+145)
 NEVA: (-381)
 Red Eagle: (-467)
 Foraker: (-519)
 Tarkio: (-602)
 Topeka: (-805)
 Onondaga: (-903)
 Lansing: (-961)
 Pawnee: (-1285)
 Fort Scott: (-1324)
 TD 4384 6:00 PM 9/7/2015

DATE	DEPTH	NO	SIZE	WMT	THICK	SPRINT	FEET	REMARKS
9-3-15	3215	1	1 1/2"	R.R.			325	3 3/4
9-4-15	1387		2 7/8"	126R			2498	2123 3/4
9-5-15	2844		3 7/8"				4384	1884 5/16
9-6-15	3730							
9-7-15	4209							
9-8-15	4384							

DRILL STEEL TESTS
 NO DST'S RAN
 Based on several positive shows of free oil and well running through out the Decision was made to set 5 1/2 production casing and perforate several Kansas City zones.
 Respectfully
 Ryan Moore

LEGEND
 Anhydrite, Salt, Sandstone, Shale, Carb sh, Limestone, Ool. Lime, Chert, Dolomite



CONTRACTOR: White Knight Drilling
LEASE: Sloman in gcr SW IP Oil
ELEVATION: 3007 **RTD:** 4384
LOCATION: 376 E SL E 3915 FEL
SEC: 18 **TWP:** 15 **RNG:** 29W
COUNTY: Rawlins **STATE:** Kansas