

L.D. DRILLING, INC.
YORK LEASE
SE. 1/4, SECTION 31, T15S, R30W
GOVE COUNTY, KANSAS

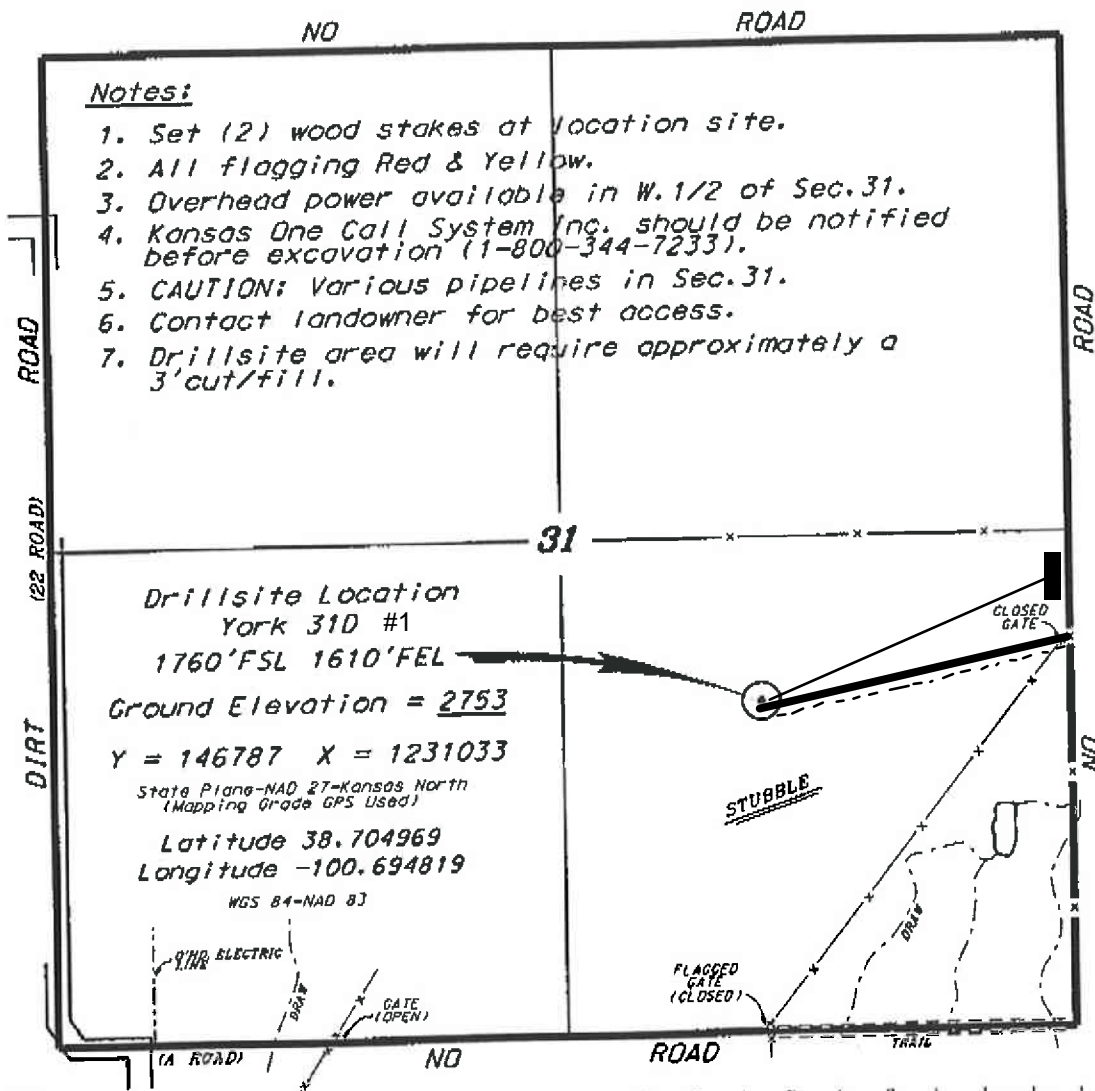
Directions:

From the intersection of Highway 83 and Highway 4 (8 miles north of Scott City, Kansas) go 8.0 miles East, then go 5.0 miles North, then go 3.0 miles East, then go 2.0 miles North, then 0.61 miles East, then go 0.33 miles North to location.

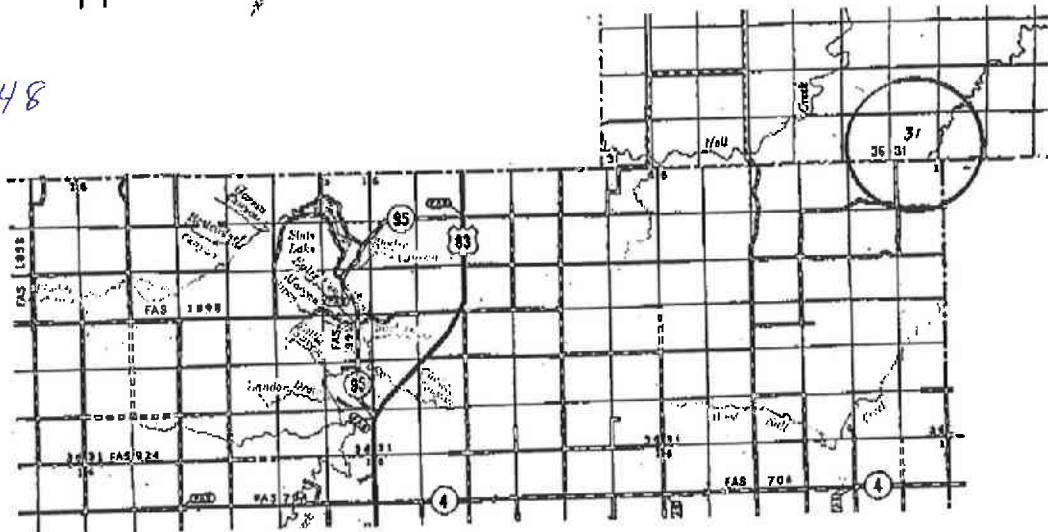
Notes:

1. Set (2) wood stakes at location site.
2. All flagging Red & Yellow.
3. Overhead power available in W. 1/2 of Sec. 31.
4. Kansas One Call System Inc. should be notified before excavation (1-800-344-7233).
5. CAUTION: Various pipelines in Sec. 31.
6. Contact landowner for best access.
7. Drillsite area will require approximately a 3' cut/fill.

Ingress and egress to location as shown on this plot is for usage only and may not be legally opened for public use. Contact landowner, tenant and county road department for access.



Kenneth York
620-397-1648



- Controlling data is based upon the best maps and photographs available to us and upon a regular section of land containing 640 acres.
- Approximate section lines were determined using the normal standard of care of oilfield surveyors practicing in the state of Kansas. The section corners, which establish the precise section lines, were not necessarily located, and the exact location of the drillsite location in the section is not guaranteed, therefore, the operator securing this service and accepting this plot and all other parties relying thereon agree to hold Central Kansas Oilfield Services, Inc., its officers and employees harmless from all losses, costs and expenses and hold entitled released from any liability from incidental or consequential damages.
- Elevations derived from National Geodetic Vertical Datum.

Date November 23, 2015