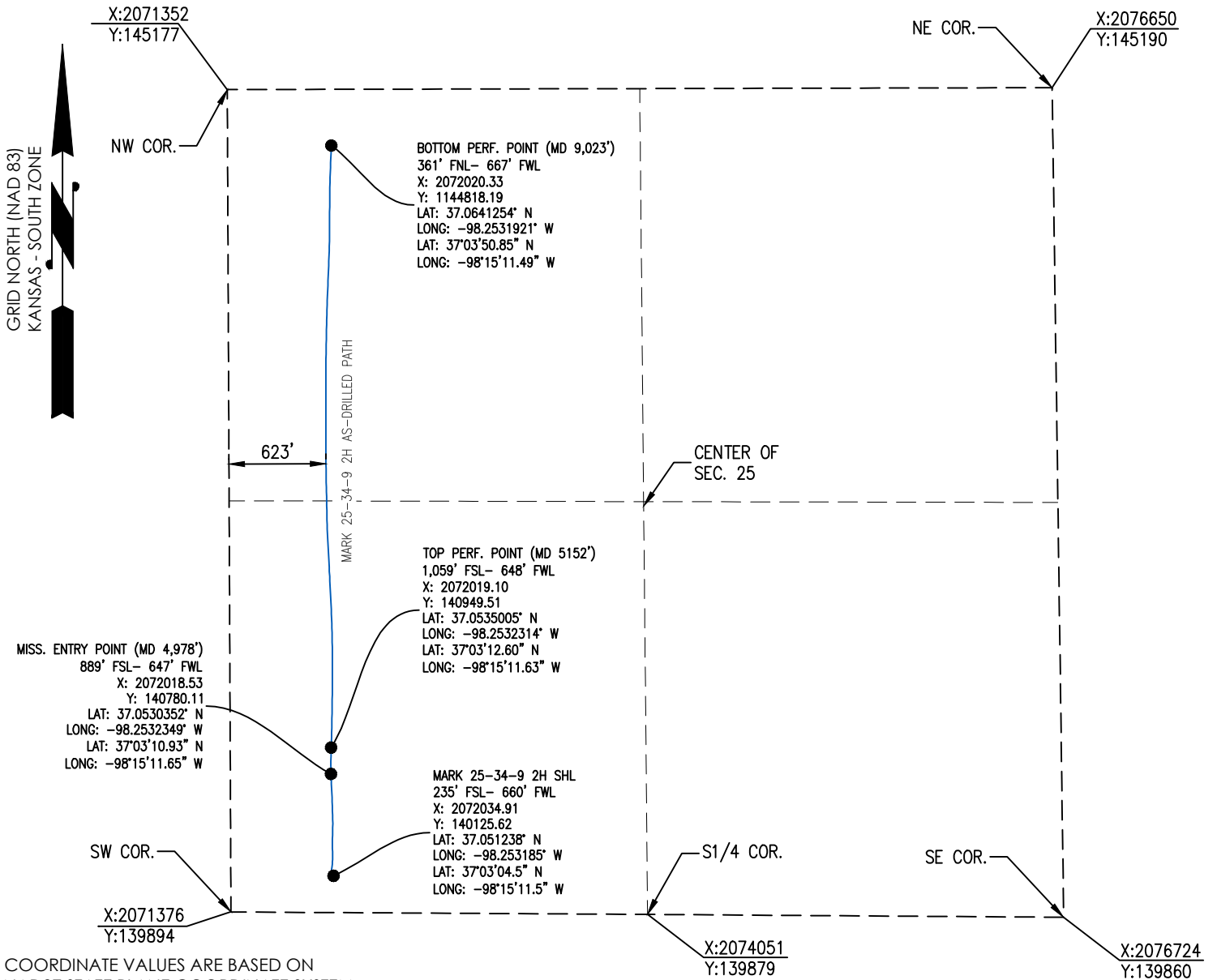




Crafton Tull
 SURVEYING

HARPER COUNTY, KANSAS
 235' FSL & 660' FWL SECTION 25 TOWNSHIP 34S RANGE 09W 6TH P.M.



COORDINATE VALUES ARE BASED ON
 NAD27 STATE PLANE COORDINATE SYSTEM,
 KANSAS SOUTH ZONE, U.S. SURVEY FOOT.

ELEVATION:
 1,269' GR. AT STAKE

OPERATOR: TAPSTONE ENERGY WELL NO: 2H

LEASE NAME: MARK 25-34-9

TOPOGRAPHIC & VEGETATION: LOCATION FELL IN A FIELD

GOOD DRILL SITE: YES REFERENCE STAKES OR ALTERNATE LOCATION STAKES SET: NONE

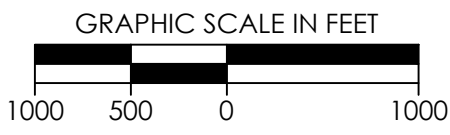
BEST ACCESSIBILITY TO LOCATION: WEST LINE

DISTANCE & DIRECTION
 FROM HWY JCT OR TOWN: FROM THE JCT. OF STATE HWY 2 AND SW 120 AVENUE, TRAVEL SOUTH ON SW 120 AVENUE FOR APPROXIMATELY 6.5 MILES, TO THE END OF SW 120 AVENUE.

(THE FOLLOWING INFORMATION WAS GATHERED USING A GPS RECEIVER ACCURACY ±2.3 METERS)

GPS DATUM: <u>NAD-27</u>	STATE PLANE COORDINATES:
LAT: <u>37.051238° N</u>	ZONE: <u>KS-SOUTH NAD-27</u>
LONG: <u>-98.253185° W</u>	X: <u>X: 2072034.91</u>
	Y: <u>Y: 140125.62</u>

GENERAL NOTES:
 THE TIES AND FOOTAGES SHOWN ON THIS PLAT ARE FROM LINES OF OCCUPATION FROM A SURVEY MADE ON THE GROUND AND / OR BEARING AND DISTANCES FROM THE GENERAL LAND OFFICE PLAT OF THE AREA SHOWN AND MAY NOT BE THE ACTUAL PROPERTY CORNERS. THIS PLAT DOES NOT REPRESENT A TRUE BOUNDARY SURVEY. DRILL SITE CONDITION DETERMINATIONS WERE MADE BY TAPSTONE REPRESENTATIVES.



AS-DRILLED INFORMATION PROVIDED BY CLIENT.

REVISION	"MARK 25-34-9 2H" PART OF THE SW1/4 OF SECTION 25, T-34-S, R-09-W AS-DRILLED PLAT HARPER COUNTY, KANSAS		
	SCALE: 1" = 1000'	DRAWN BY: J.PARKER	SHEET NO.: 1 OF 1