



TRILOBITE TESTING, INC.

DRILL STEM TEST REPORT

Berexco LLC
 2020 N Bramblewood
 Wichita KS 67206-1094
 ATTN: Clint Bleier

36 19s 22w Ness
HL Williams Estate 4
 Job Ticket: 61668 **DST#: 1**
 Test Start: 2015.10.20 @ 22:00:00

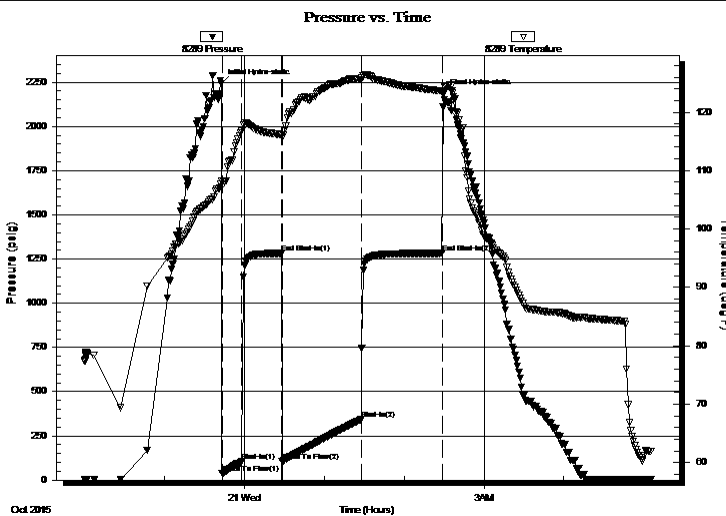
GENERAL INFORMATION:

Formation: **Mississippian**
 Deviated: No Whipstock: ft (KB)
 Time Tool Opened: 23:43:15
 Time Test Ended: 05:06:00
 Interval: **4359.00 ft (KB) To 4398.00 ft (KB) (TVD)**
 Total Depth: 4398.00 ft (KB) (TVD)
 Hole Diameter: 7.88 inches Hole Condition: Fair
 Test Type: Conventional Bottom Hole (Initial)
 Tester: Jim Svaty
 Unit No: 76
 Reference Elevations: 2267.00 ft (KB)
 2260.00 ft (CF)
 KB to GR/CF: 7.00 ft

Serial #: 8289 Outside
 Press @ Run Depth: 344.12 psig @ 4363.00 ft (KB) Capacity: 8000.00 psig
 Start Date: 2015.10.20 End Date: 2015.10.21 Last Calib.: 2015.10.21
 Start Time: 22:00:02 End Time: 05:05:45 Time On Btm: 2015.10.20 @ 23:43:00
 Time Off Btm: 2015.10.21 @ 02:29:30

TEST COMMENT: 15-IF- BOB in 9 1/2min.
 30-ISI- Weak Surface Blow
 60-FF- BOB in 13min.
 60-FSI- No Blow

PRESSURE SUMMARY



Time (Min.)	Pressure (psig)	Temp (deg F)	Annotation
0	2243.98	108.26	Initial Hydro-static
1	37.80	107.24	Open To Flow (1)
16	105.83	116.82	Shut-In(1)
45	1282.75	116.14	End Shut-In(1)
46	107.10	115.58	Open To Flow (2)
105	344.12	125.57	Shut-In(2)
166	1283.13	123.58	End Shut-In(2)
167	2183.80	123.24	Final Hydro-static

Recovery

Length (ft)	Description	Volume (bbl)
250.00	GMCO 20%g 20%m 60%o	3.51
625.00	CO 100%	8.77
0.00	125 GIP	0.00

Gas Rates

	Choke (inches)	Pressure (psig)	Gas Rate (Mcf/d)



**TRILOBITE
TESTING, INC.**

DRILL STEM TEST REPORT

FLUID SUMMARY

Berexco LLC
2020 N Bramblewood
Wichita KS 67206-1094
ATTN: Clint Bleier

36 19s 22w Ness
HL Williams Estate 4
Job Ticket: 61668 **DST#: 1**
Test Start: 2015.10.20 @ 22:00:00

Mud and Cushion Information

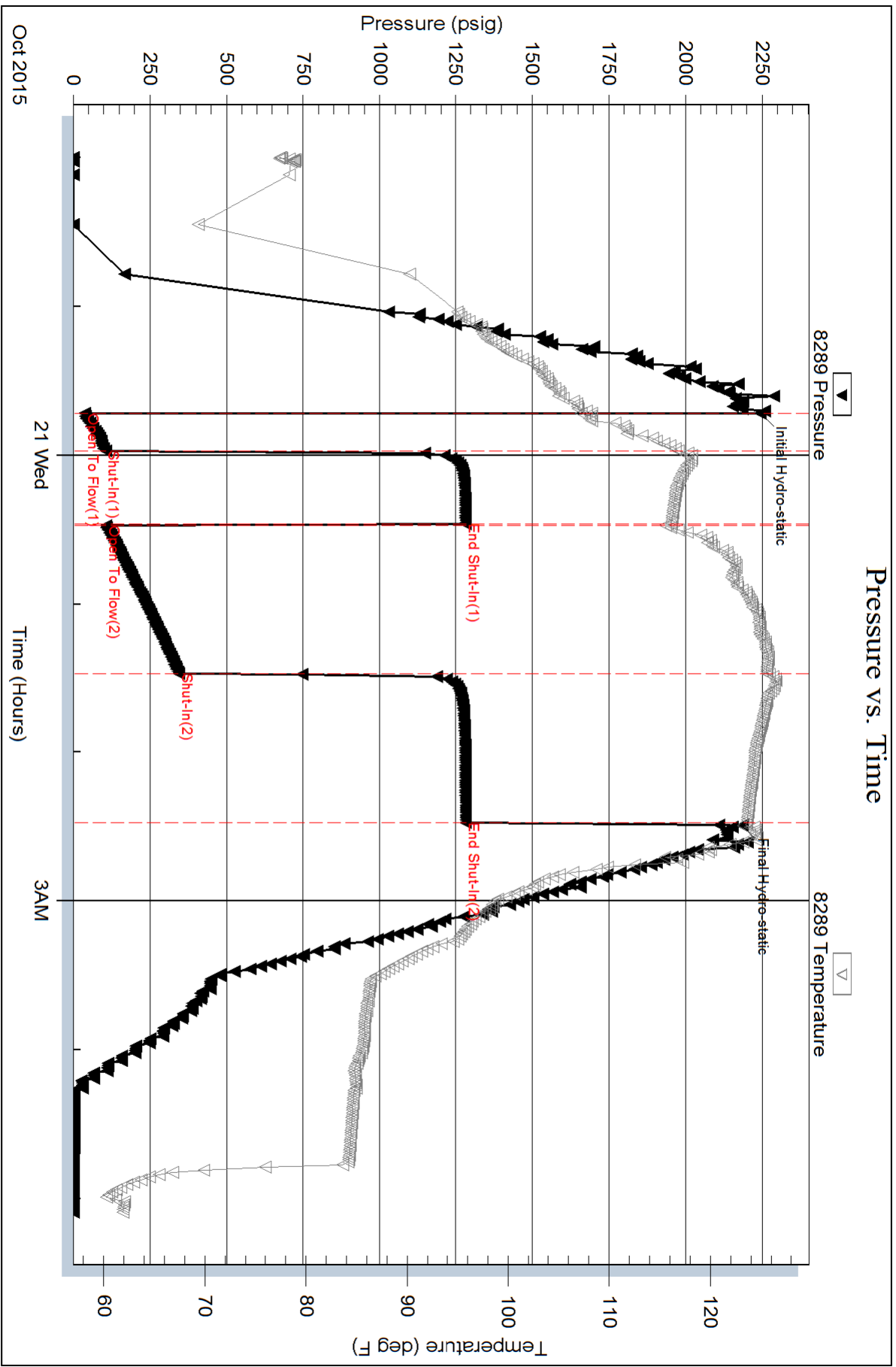
Mud Type: Gel Chem	Cushion Type:	Oil API: 36 deg API
Mud Weight: 9.00 lb/gal	Cushion Length: ft	Water Salinity: ppm
Viscosity: 50.00 sec/qt	Cushion Volume: bbl	
Water Loss: 8.78 in ³	Gas Cushion Type:	
Resistivity: ohm.m	Gas Cushion Pressure: psig	
Salinity: 3500.00 ppm		
Filter Cake: 2.00 inches		

Recovery Information

Recovery Table

Length ft	Description	Volume bbl
250.00	GMCO 20%g 20%m 60%o	3.507
625.00	CO 100%	8.767
0.00	125 GIP	0.000

Total Length: 875.00 ft Total Volume: 12.274 bbl
Num Fluid Samples: 0 Num Gas Bombs: 0 Serial #:
Laboratory Name: Laboratory Location:
Recovery Comments:



Serial #: 8789

Inside

Berexco LLC

HL Williams Estate 4

DST Test Number: 1

