



MIDWEST SURVEYS

LOGGING - PERFORATING - CONSULTING SERVICES

P.O. Box 68, Osawatomie, KS 66064

913 / 755 - 2128

GAMMA RAY / CEMENT BOND / CCL

File No.

Company **Walken Energy, LLC**

Well **Atyeo No.- 1**

Field

County **Chase** State **Kansas**

API #

Location	<i>346 FSL</i> <i>333 FEL</i> SE/4	Other Services
Sec. 4	Twp. 21s	Rge. 9e
Permanent Datum	GL	Elevation 1326'
Log Measured From	GL	K.B. NA
Drilling Measured From	KB	D.F. NA
		G.L. 1326'

Date	3-31-2008
Run Number	One
Depth Driller	2390.8
Depth Logger	2390.8
Bottom Logged Interval	2387.8
Top Log Interval	1000.0
Fluid Level	300.0
Type Fluid	Water
Density / Viscosity	NA
Salinity - PPM Cl	NA
Max Recorded Temp	NA
Estimated Cement Top	NA
Equipment No.	104
Location	Osawatomie
Recorded By	Steve Windisch
Witnessed By	Dan Clarke

BORE-HOLE RECORD				CASING RECORD			
RUN No.	BIT	FROM	TO	SIZE	WGT.	FROM	TO
				7.00"		0.0	2200.0
				4.50"		0.0	2390.8

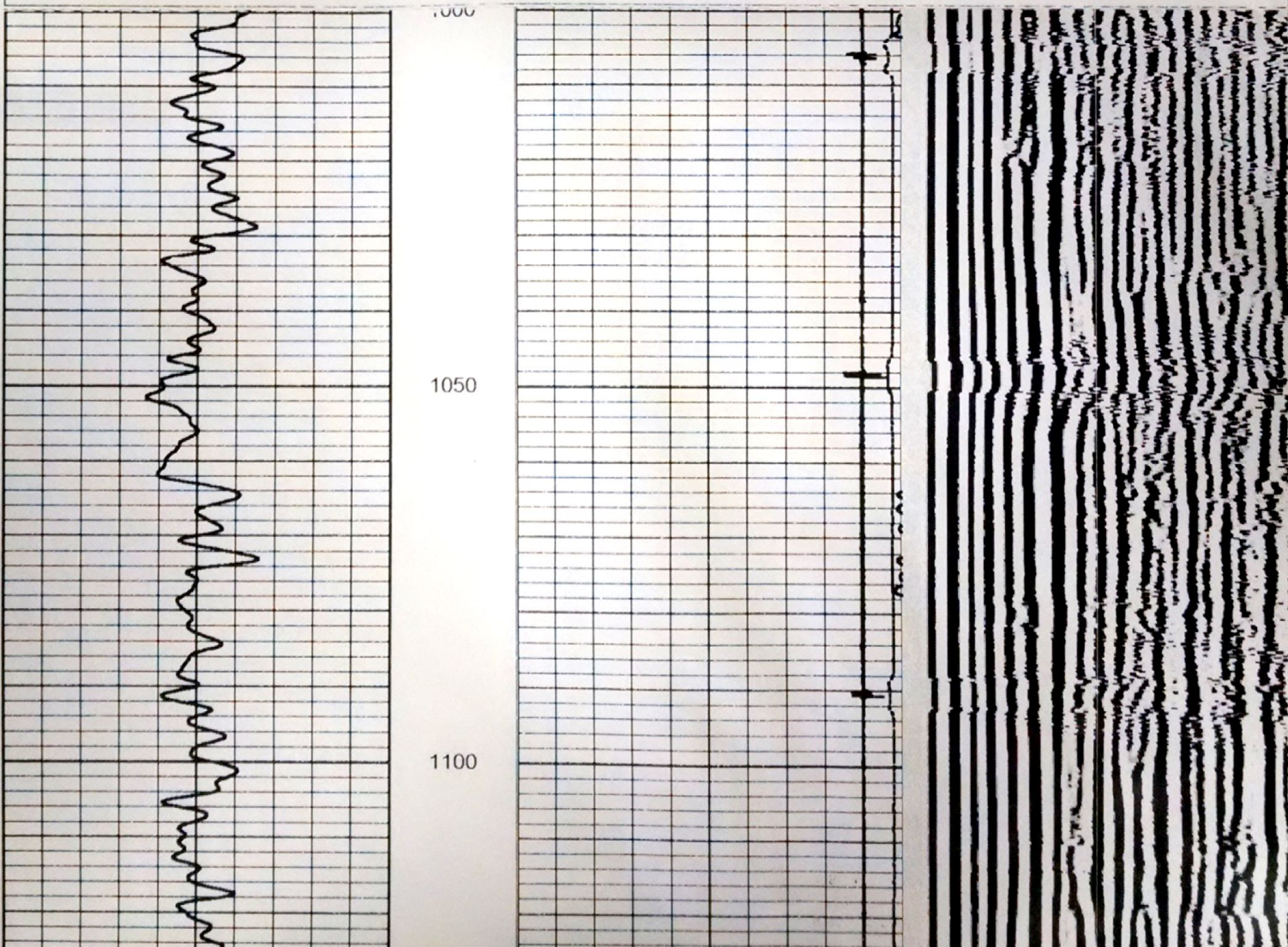
All interpretations are opinions based on inferences from electrical or other measurements and we cannot and do not guarantee the accuracy or correctness of any interpretation, and we shall not, except in the case of gross or willful negligence on our part, be liable or responsible for any loss, costs, damages, or expenses incurred or sustained by anyone resulting from any interpretation made by any of our officers, agents or employees. These interpretations are also subject to our general terms and conditions set out in our current Price Schedule.

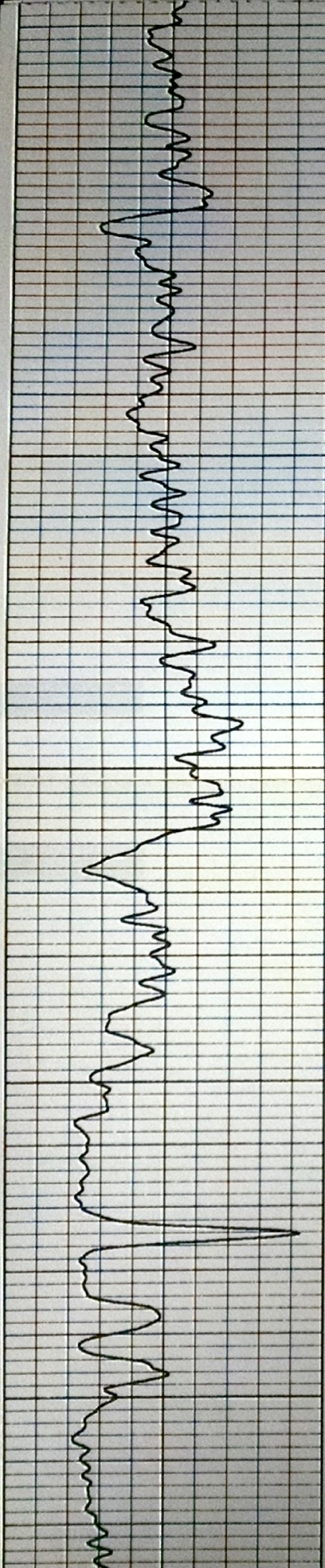
Comments

Drilling Contractor :

Database File: atyeo1.db
 Dataset Pathname: pass1
 Presentation Format: cbl01
 Dataset Creation: Mon Mar 31 11:37:02 2008 by Log Warrior Version 6.6
 Charted by: Depth in Feet scaled 1:240

0	GR	150	0	Amplified Amplitude (mV)	50	200	Variable Density	1200
150	GR-2	300	0	Amplitude (mV)	100			
			1200	Travel Time (usec)	250			
			-9	Collar Locator	1			





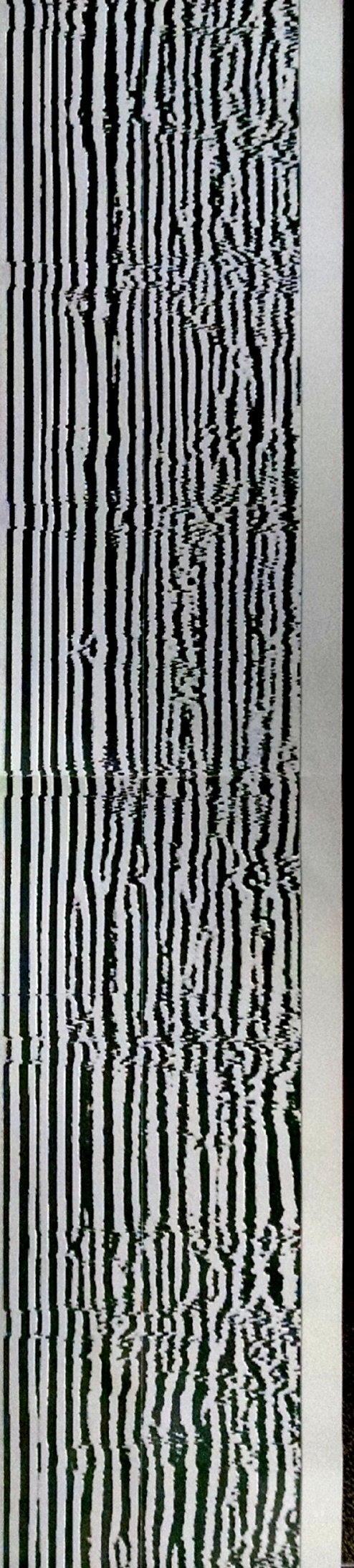
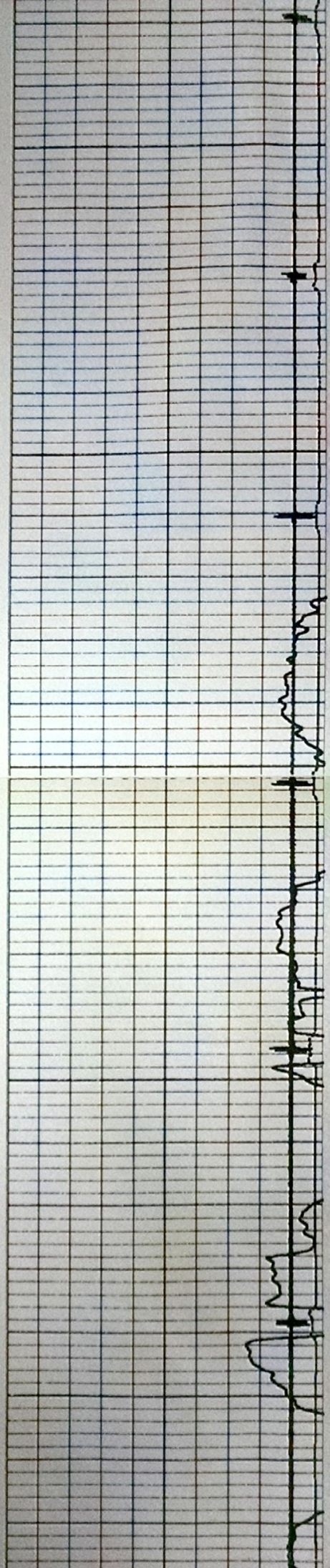
1150

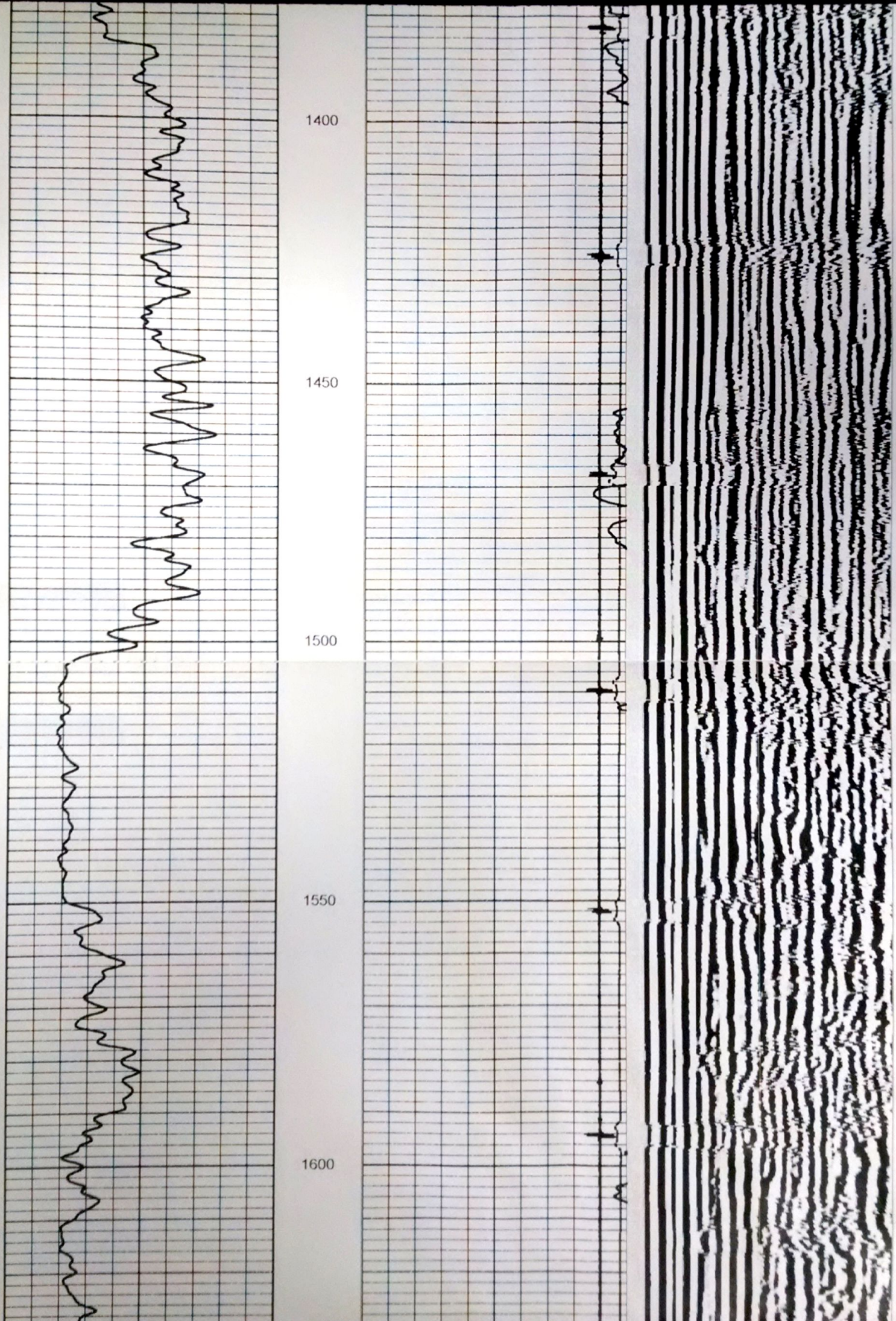
1200

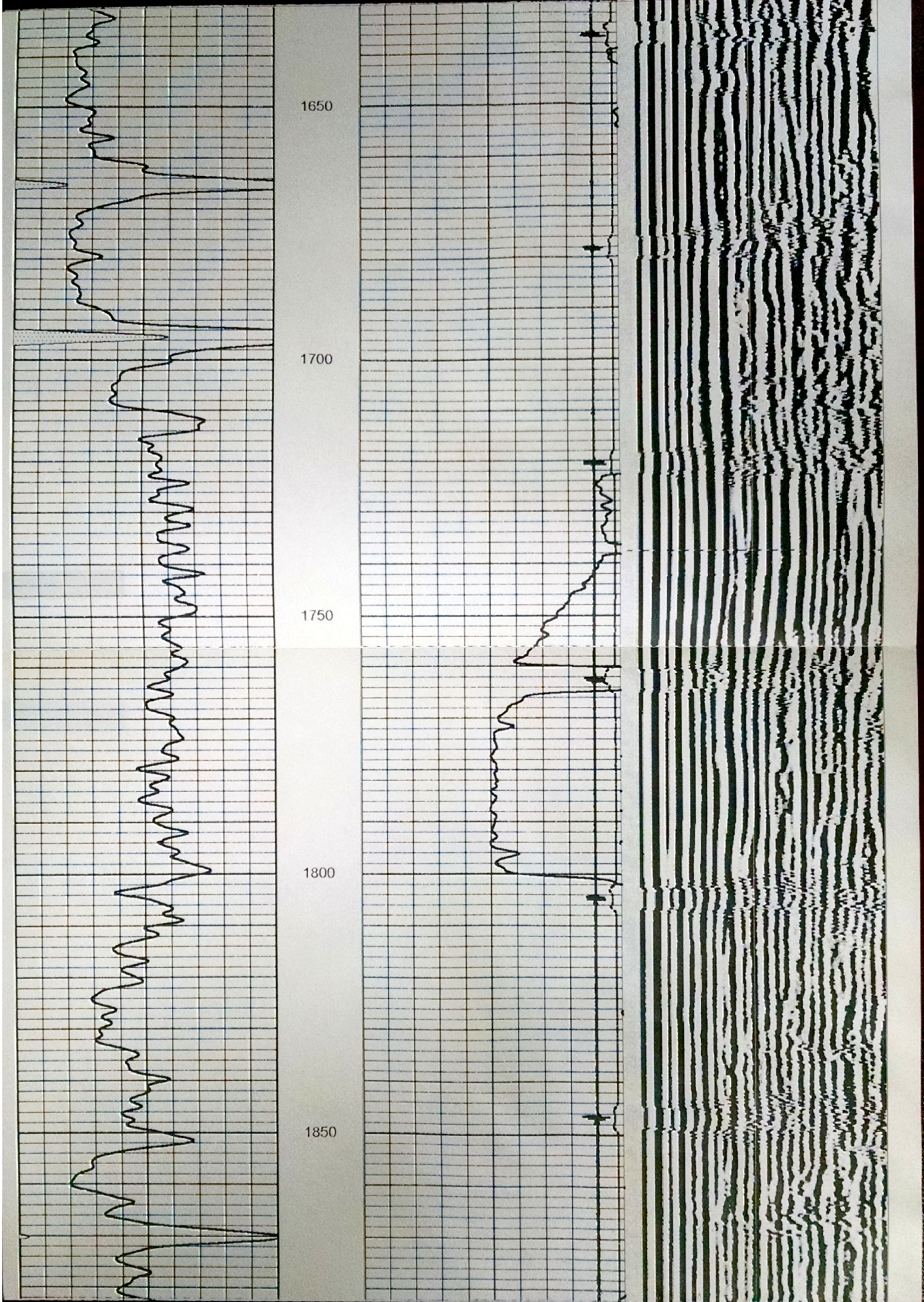
1250

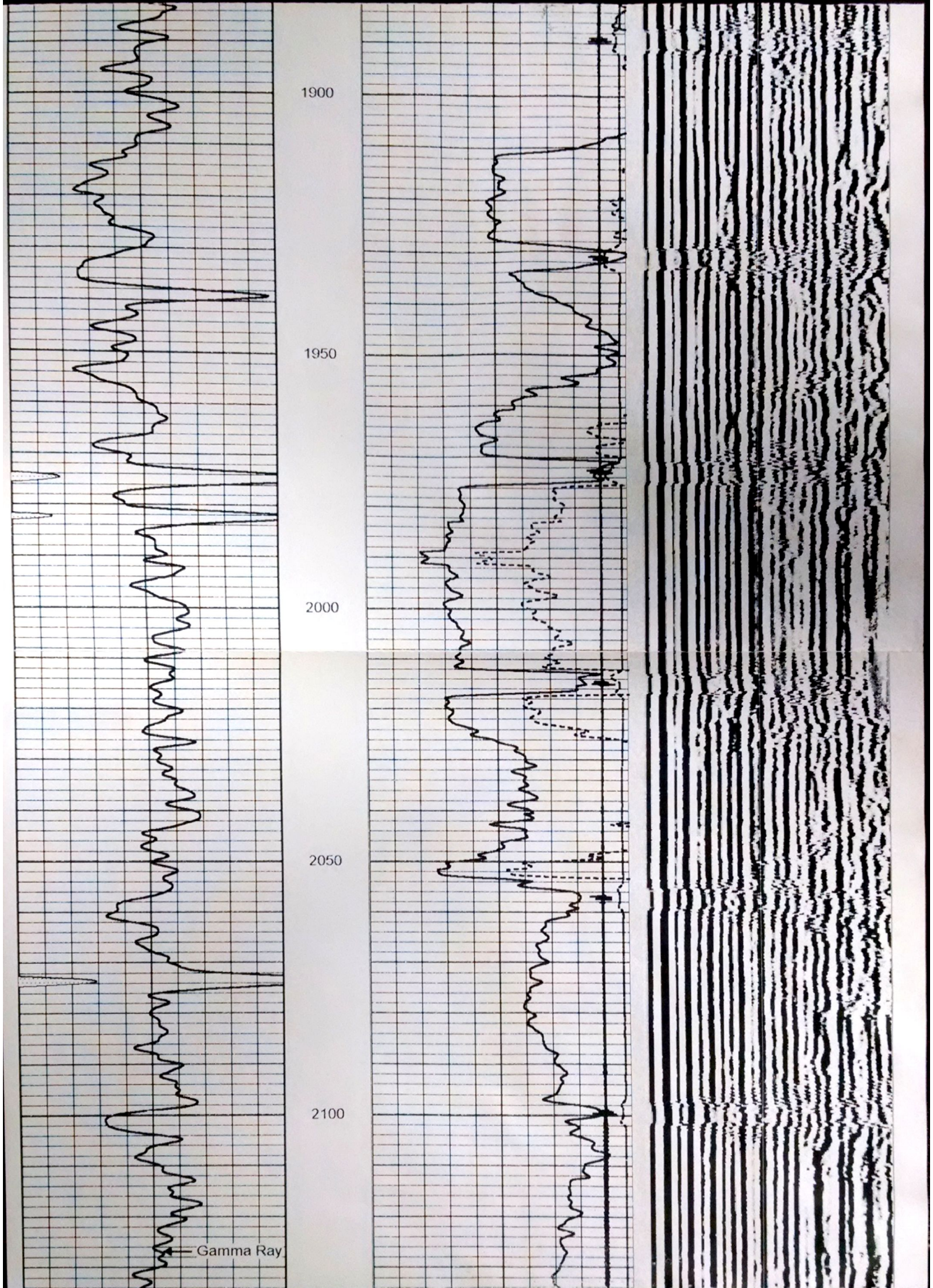
1300

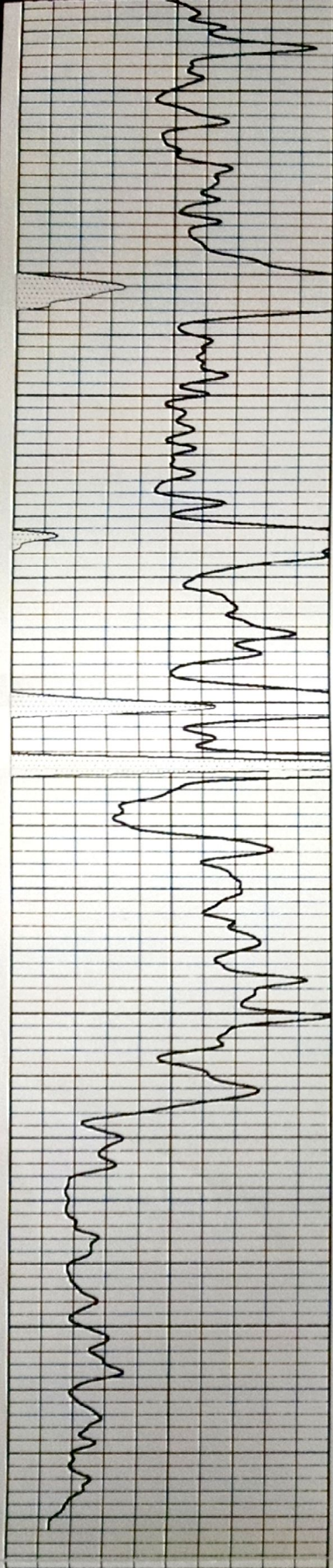
1350



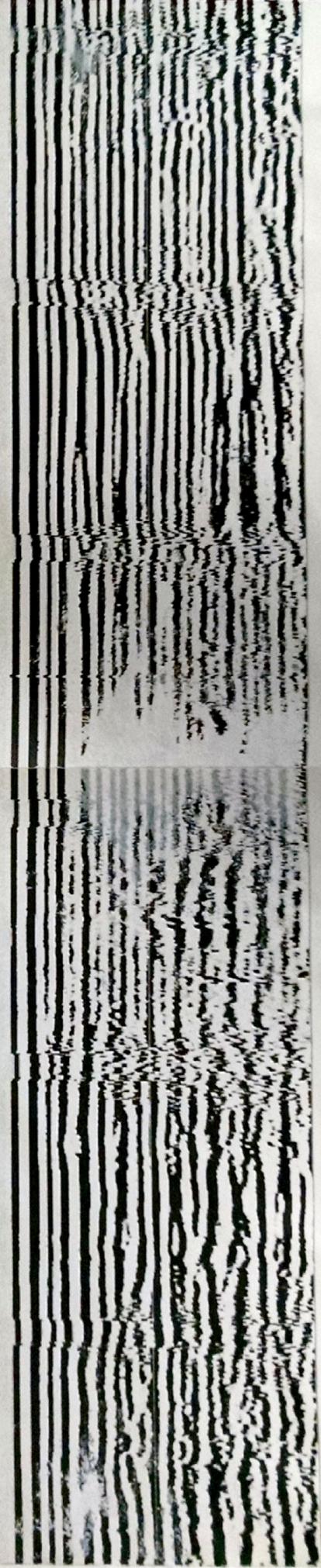
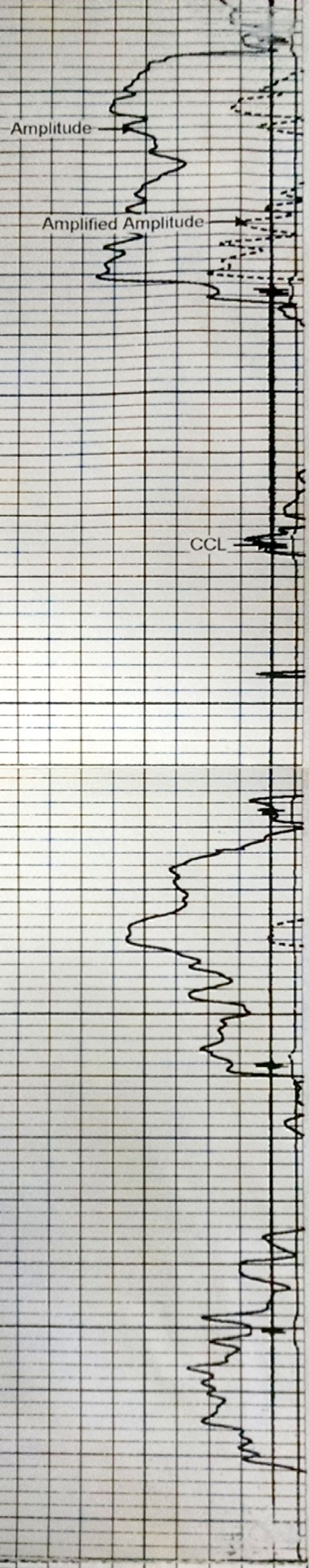








2150
2200
2250
2300
2350



0	GR	150
150	GR-2	300

0	Amplified Amplitude (mV)	50
0	Amplitude	100
1200	Travel Time (sec)	250
-9	Collar Locator	1

200	Variable Density	1200
-----	------------------	------