



**TRILOBITE TESTING, INC.**

# DRILL STEM TEST REPORT

Blue Goose Drilling Company, Inc

**4-18-27w Lane Co KS**

P.O. Box 1413  
Great Bend KS  
67530  
ATTN: Ken Wallace

**Borell H 1**

Job Ticket: 64485

**DST#: 3**

Test Start: 2015.11.06 @ 15:49:15

## GENERAL INFORMATION:

Formation: **Cherokee Sand**

Deviated: No Whipstock: ft (KB)

Time Tool Opened: 17:17:45

Time Test Ended: 20:06:30

Test Type: Conventional Bottom Hole (Reset)

Tester: Mike Roberts

Unit No: 65

**Interval: 4485.00 ft (KB) To 4509.00 ft (KB) (TVD)**

Reference Elevations: 2623.00 ft (KB)

Total Depth: 4509.00 ft (KB) (TVD)

2614.00 ft (CF)

Hole Diameter: 7.88 inches Hole Condition: Fair

KB to GR/CF: 9.00 ft

**Serial #: 8737 Outside**

Press @ Run Depth: 25.15 psig @ 4504.00 ft (KB)

Capacity: 8000.00 psig

Start Date: 2015.11.06

End Date: 2015.11.06

Last Calib.: 2015.11.06

Start Time: 15:49:15

End Time: 20:06:30

Time On Btm: 2015.11.06 @ 17:17:30

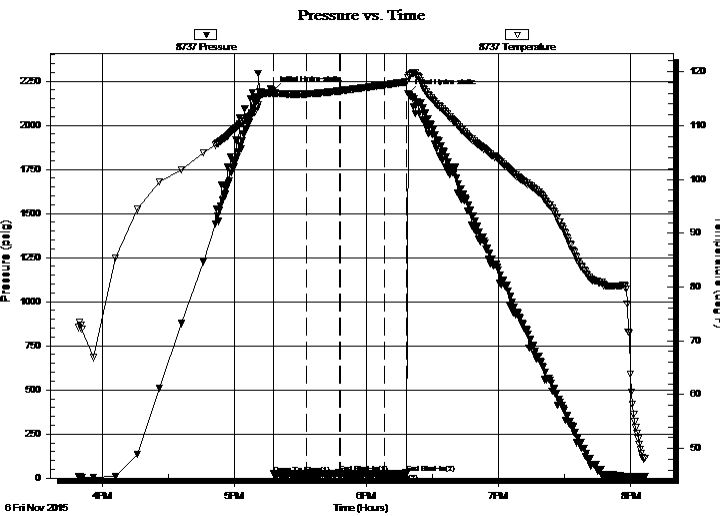
Time Off Btm: 2015.11.06 @ 18:18:45

**TEST COMMENT:** IF: Built to week surface blow and died in 12 min.

IS: No return blow

FF: No blow

FS: No return blow



## PRESSURE SUMMARY

Time (Min.)	Pressure (psig)	Temp (deg F)	Annotation
0	2195.54	116.44	Initial Hydro-static
1	23.47	115.63	Open To Flow (1)
16	22.18	115.87	Shut-In(1)
31	29.37	116.44	End Shut-In(1)
31	22.61	116.46	Open To Flow (2)
51	25.15	117.55	Shut-In(2)
61	29.29	118.13	End Shut-In(2)
62	2178.51	118.97	Final Hydro-static

## Recovery

Length (ft)	Description	Volume (bbl)
1.00	mud 100% m	0.00

\* Recovery from multiple tests

## Gas Rates

Choke (inches)	Pressure (psig)	Gas Rate (MMcf/d)



**TRILOBITE  
TESTING, INC.**

# DRILL STEM TEST REPORT

**FLUID SUMMARY**

Blue Goose Drilling Company, Inc

**4-18-27w Lane Co KS**

P.O. Box 1413  
Great Bend KS  
67530

**Borell H 1**

Job Ticket: 64485

**DST#: 3**

ATTN: Ken Wallace

Test Start: 2015.11.06 @ 15:49:15

## Mud and Cushion Information

Mud Type: Gel Chem

Cushion Type:

Oil API:

0 deg API

Mud Weight: 9.00 lb/gal

Cushion Length:

ft

Water Salinity:

0 ppm

Viscosity: 51.00 sec/qt

Cushion Volume:

bbl

Water Loss: 8.78 in<sup>3</sup>

Gas Cushion Type:

Resistivity: 0.00 ohm.m

Gas Cushion Pressure:

psig

Salinity: 3700.00 ppm

Filter Cake: 1.00 inches

## Recovery Information

Recovery Table

Length ft	Description	Volume bbl
1.00	mud 100%m	0.005

Total Length: 1.00 ft      Total Volume: 0.005 bbl

Num Fluid Samples: 0

Num Gas Bombs: 0

Serial #:

Laboratory Name:

Laboratory Location:

Recovery Comments:

### Pressure vs. Time

