



## DRILL STEM TEST REPORT

Prepared For: **RJM COMPANY**

P.O. BOX 256  
CLAFLIN, KANSAS 67525

ATTN: WYATT URBAN

**BARTON COUNTY 1**

**12-19S-12W BARTON**

Start Date: 2015.11.08 @ 06:06:00

End Date: 2015.11.08 @ 10:40:00

Job Ticket #: 01247                      DST #: 2

Eagle Testers  
1309 Patton Road    Great Bend, Kansas 67530  
620-791-7394

Printed: 2015.11.08 @ 10:40:23

RJM COMPANY  
12-19S-12W BARTON  
BARTON COUNTY 1  
DST # 2  
KANSAS CITY G  
2015.11.08



# DRILL STEM TEST REPORT

RJM COMPANY  
 P.O. BOX 256  
 CLAFLIN, KANSAS 67525  
 ATTN: WYATT URBAN

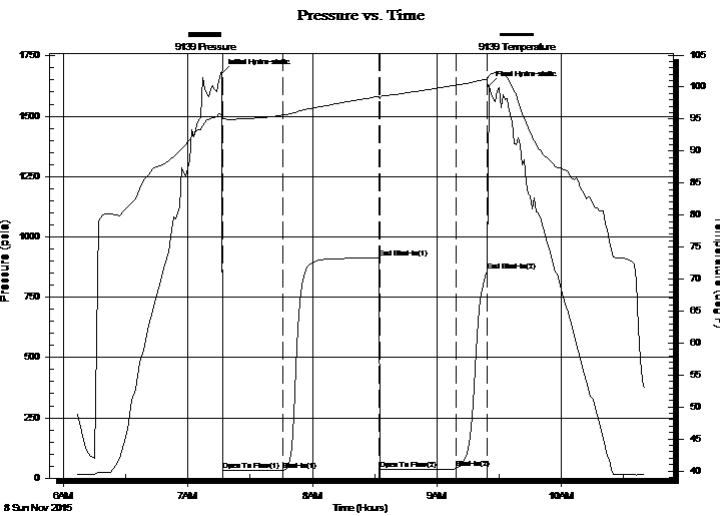
**12-19S-12W BARTON**  
**BARTON COUNTY 1**  
 Job Ticket: 01247 **DST#: 2**  
 Test Start: 2015.11.08 @ 06:06:00

## GENERAL INFORMATION:

Formation: **KANSAS CITY G**  
 Deviated: No Whipstock: ft (KB)  
 Time Tool Opened: 07:01:00  
 Time Test Ended: 10:40:00  
 Interval: **3265.00 ft (KB) To 3280.00 ft (KB) (TVD)**  
 Total Depth: 3280.00 ft (KB) (TVD)  
 Hole Diameter: 7.88 inches Hole Condition: Fair  
 Test Type: Conventional Bottom Hole (Initial)  
 Tester: GENE BUDIG  
 Unit No: 1  
 Reference Elevations: 1877.00 ft (KB)  
 1872.00 ft (CF)  
 KB to GR/CF: 5.00 ft

**Serial #: 9139 Outside**  
 Press@RunDepth: 859.47 psia @ 3275.00 ft (KB) Capacity: 5000.00 psia  
 Start Date: 2015.11.08 End Date: 2015.11.08 Last Calib.: 2015.11.08  
 Start Time: 06:06:00 End Time: 10:40:30 Time On Btm: 2015.11.08 @ 07:16:30  
 Time Off Btm: 2015.11.08 @ 09:25:00

**TEST COMMENT:** 1ST OPENING 30 MINUTES WEAK STEADY 1/2 INCH BLOW THROUGH OUT  
 1ST SHUT-IN 45 MINUTES-NO BLOW BACK  
 2ND OPENING 37 MINUTES-VERY WEAK INTERMITTANT BLOW THROUGH OUT  
 2ND SHUT-IN 15 MINUTES-NO BLOW BACK



## PRESSURE SUMMARY

Time (Min.)	Pressure (psia)	Temp (deg F)	Annotation
0	1678.24	95.60	Initial Hydro-static
1	31.87	95.12	Open To Flow (1)
30	33.56	95.64	Shut-In(1)
76	911.79	98.55	End Shut-In(1)
76	35.62	98.26	Open To Flow (2)
113	39.12	100.27	Shut-In(2)
128	859.47	101.26	End Shut-In(2)
129	1625.78	101.85	Final Hydro-static

## Recovery

Length (ft)	Description	Volume (bbl)
20.00	DRILLING MUD	0.29

## Gas Rates

	Choke (inches)	Pressure (psia)	Gas Rate (Mcf/d)



# DRILL STEM TEST REPORT

RJM COMPANY  
 P.O. BOX 256  
 CLAFLIN, KANSAS 67525  
 ATTN: WYATT URBAN

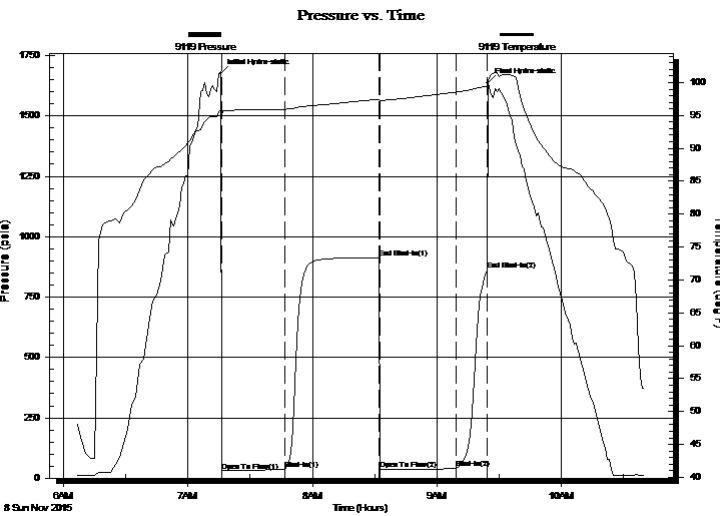
**12-19S-12W BARTON**  
**BARTON COUNTY 1**  
 Job Ticket: 01247 **DST#: 2**  
 Test Start: 2015.11.08 @ 06:06:00

## GENERAL INFORMATION:

Formation: **KANSAS CITY G**  
 Deviated: No Whipstock: ft (KB)  
 Time Tool Opened: 07:01:00  
 Time Test Ended: 10:40:00  
 Interval: **3265.00 ft (KB) To 3280.00 ft (KB) (TVD)**  
 Total Depth: 3280.00 ft (KB) (TVD)  
 Hole Diameter: 7.88 inches Hole Condition: Fair  
 Test Type: Conventional Bottom Hole (Initial)  
 Tester: GENE BUDIG  
 Unit No: 1  
 Reference Elevations: 1877.00 ft (KB)  
 1872.00 ft (CF)  
 KB to GR/CF: 5.00 ft

**Serial #: 9119 Inside**  
 Press@RunDepth: 864.18 psia @ 3275.00 ft (KB) Capacity: 5000.00 psia  
 Start Date: 2015.11.08 End Date: 2015.11.08 Last Calib.: 2015.11.08  
 Start Time: 06:06:00 End Time: 10:40:30 Time On Btm: 2015.11.08 @ 07:16:00  
 Time Off Btm: 2015.11.08 @ 09:24:30

**TEST COMMENT:** 1ST OPENING 30 MINUTES WEAK STEADY 1/2 INCH BLOW THROUGH OUT  
 1ST SHUT-IN 45 MINUTES-NO BLOW BACK  
 2ND OPENING 37 MINUTES-VERY WEAK INTERMITTANT BLOW THROUGH OUT  
 2ND SHUT-IN 15 MINUTES-NO BLOW BACK



PRESSURE SUMMARY			
Time (Min.)	Pressure (psia)	Temp (deg F)	Annotation
0	1677.16	95.91	Initial Hydro-static
1	29.16	94.92	Open To Flow (1)
31	35.48	95.95	Shut-In(1)
76	912.69	97.48	End Shut-In(1)
77	34.91	97.25	Open To Flow (2)
113	39.61	98.53	Shut-In(2)
128	864.18	99.41	End Shut-In(2)
129	1638.04	100.17	Final Hydro-static

Recovery		
Length (ft)	Description	Volume (bbl)
20.00	DRILLING MUD	0.29

Gas Rates			
	Choke (inches)	Pressure (psia)	Gas Rate (Mcf/d)



# DRILL STEM TEST REPORT

TOOL DIAGRAM

RJM COMPANY  
 P.O. BOX 256  
 CLAFLIN, KANSAS 67525  
 ATTN: WYATT URBAN

**12-19S-12W BARTON**  
**BARTON COUNTY 1**  
 Job Ticket: 01247 **DST#: 2**  
 Test Start: 2015.11.08 @ 06:06:00

## Tool Information

Drill Pipe:	Length: 3267.00 ft	Diameter: 3.86 inches	Volume: 47.29 bbl	Tool Weight:	lb
Heavy Wt. Pipe:	Length: 0.00 ft	Diameter: 0.00 inches	Volume: 0.00 bbl	Weight set on Packer:	lb
Drill Collar:	Length: 0.00 ft	Diameter: 0.00 inches	Volume: 0.00 bbl	Weight to Pull Loose:	lb
			<u>Total Volume: 47.29 bbl</u>	Tool Chased	ft
Drill Pipe Above KB:	22.00 ft			String Weight: Initial	lb
Depth to Top Packer:	3265.00 ft			Final	lb
Depth to Bottom Packer:	ft				
Interval between Packers:	15.00 ft				
Tool Length:	35.00 ft				
Number of Packers:	2	Diameter:	inches		
Tool Comments:					

Tool Description	Length (ft)	Serial No.	Position	Depth (ft)	Accum. Lengths
------------------	-------------	------------	----------	------------	----------------

Shut In Tool	5.00			3250.00	
Hydraulic tool	5.00			3255.00	
Top Packer	5.00			3260.00	
Packer	5.00			3265.00	20.00 Bottom Of Top Packer
Anchor	10.00			3275.00	
Recorder	0.00	9119	Inside	3275.00	
Recorder	0.00	9139	Outside	3275.00	
Bullnose	5.00			3280.00	15.00 Anchor Tool

**Total Tool Length: 35.00**



# DRILL STEM TEST REPORT

**FLUID SUMMARY**

RJM COMPANY  
 P.O. BOX 256  
 CLAFLIN, KANSAS 67525  
 ATTN: WYATT URBAN

**12-19S-12W BARTON**  
**BARTON COUNTY 1**  
 Job Ticket: 01247      **DST#: 2**  
 Test Start: 2015.11.08 @ 06:06:00

## Mud and Cushion Information

Mud Type: Gel Chem	Cushion Type:	Oil API:	deg API
Mud Weight: 9.00 lb/gal	Cushion Length: ft	Water Salinity:	ppm
Viscosity: 50.00 sec/qt	Cushion Volume: bbl		
Water Loss: 8.80 in <sup>3</sup>	Gas Cushion Type:		
Resistivity: ohm.m	Gas Cushion Pressure: psia		
Salinity: 5000.00 ppm			
Filter Cake: 1.00 inches			

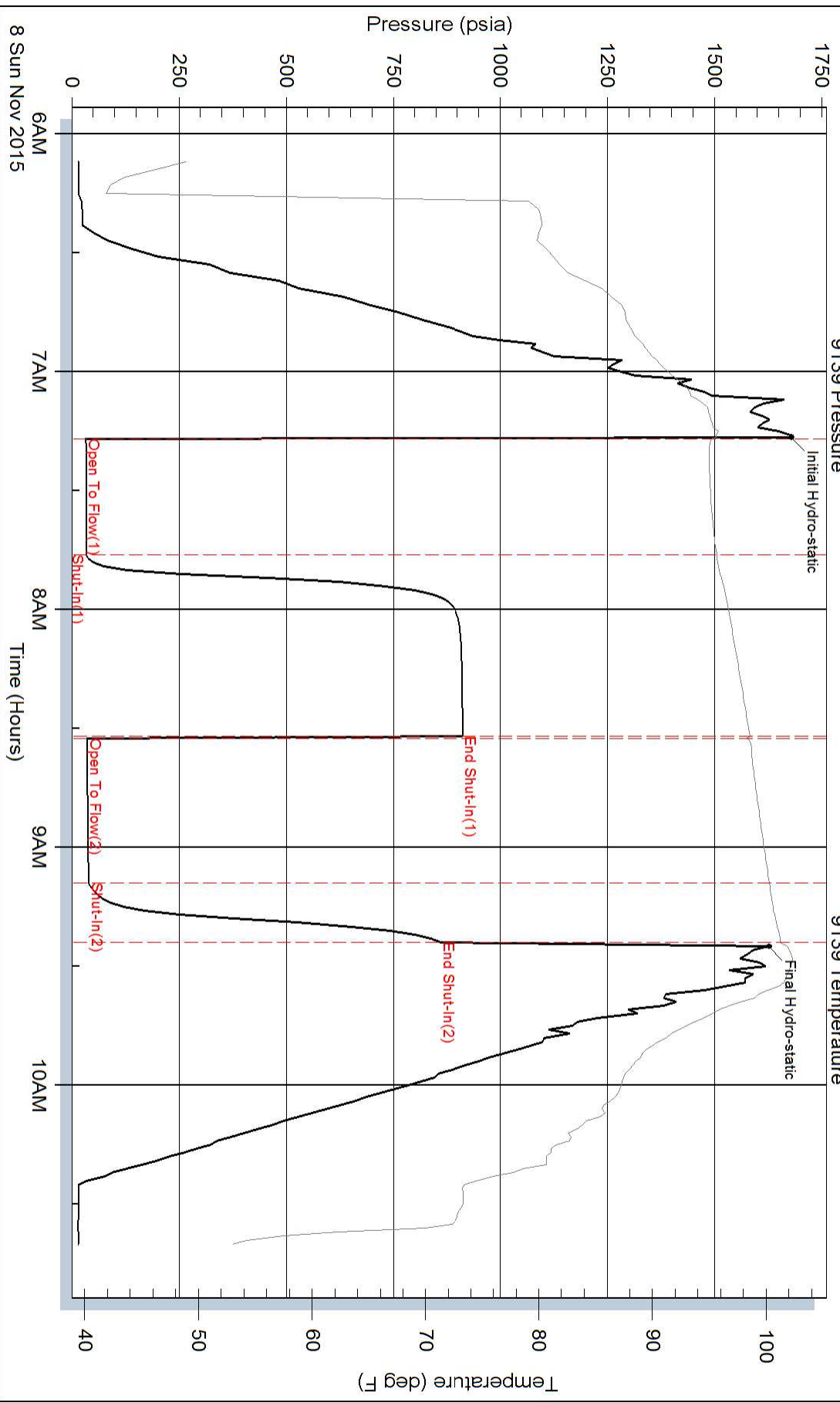
## Recovery Information

Recovery Table

Length ft	Description	Volume bbl
20.00	DRILLING MUD	0.289

Total Length: 20.00 ft      Total Volume: 0.289 bbl  
 Num Fluid Samples: 0      Num Gas Bombs: 0      Serial #:  
 Laboratory Name:      Laboratory Location:  
 Recovery Comments:

### Pressure vs. Time



### Pressure vs. Time

