



# TEMPORARY ABANDONMENT WELL APPLICATION

OPERATOR: License# \_\_\_\_\_  
 Name: \_\_\_\_\_  
 Address 1: \_\_\_\_\_  
 Address 2: \_\_\_\_\_  
 City: \_\_\_\_\_ State: \_\_\_\_\_ Zip: \_\_\_\_\_ + \_\_\_\_\_  
 Contact Person: \_\_\_\_\_  
 Phone: ( \_\_\_\_\_ ) \_\_\_\_\_  
 Contact Person Email: \_\_\_\_\_  
 Field Contact Person: \_\_\_\_\_  
 Field Contact Person Phone: ( \_\_\_\_\_ ) \_\_\_\_\_

API No. 15- \_\_\_\_\_  
 Spot Description: \_\_\_\_\_  
 \_\_\_\_\_ - \_\_\_\_\_ - \_\_\_\_\_ - \_\_\_\_\_ Sec. \_\_\_\_\_ Twp. \_\_\_\_\_ S. R. \_\_\_\_\_  E  W  
 \_\_\_\_\_ feet from  N /  S Line of Section  
 \_\_\_\_\_ feet from  E /  W Line of Section  
 GPS Location: Lat: \_\_\_\_\_, Long: \_\_\_\_\_  
(e.g. xx.xxxxx) (e.g. -xxx.xxxxx)  
 Datum:  NAD27  NAD83  WGS84  
 County: \_\_\_\_\_ Elevation: \_\_\_\_\_  GL  KB  
 Lease Name: \_\_\_\_\_ Well #: \_\_\_\_\_  
 Well Type: (check one)  Oil  Gas  OG  WSW  Other: \_\_\_\_\_  
 SWD Permit #: \_\_\_\_\_  ENHR Permit #: \_\_\_\_\_  
 Gas Storage Permit #: \_\_\_\_\_  
 Spud Date: \_\_\_\_\_ Date Shut-In: \_\_\_\_\_

	Conductor	Surface	Production	Intermediate	Liner	Tubing
Size						
Setting Depth						
Amount of Cement						
Top of Cement						
Bottom of Cement						

Casing Fluid Level from Surface: \_\_\_\_\_ How Determined? \_\_\_\_\_ Date: \_\_\_\_\_

Casing Squeeze(s): \_\_\_\_\_ to \_\_\_\_\_ w / \_\_\_\_\_ sacks of cement, \_\_\_\_\_ to \_\_\_\_\_ w / \_\_\_\_\_ sacks of cement. Date: \_\_\_\_\_  
(top) (bottom) (top) (bottom)

Do you have a valid Oil & Gas Lease?  Yes  No

Depth and Type:  Junk in Hole at \_\_\_\_\_  Tools in Hole at \_\_\_\_\_ Casing Leaks:  Yes  No Depth of casing leak(s): \_\_\_\_\_  
(depth) (depth)

Type Completion:  ALT. I  ALT. II Depth of:  DV Tool: \_\_\_\_\_ w / \_\_\_\_\_ sacks of cement  Port Collar: \_\_\_\_\_ w / \_\_\_\_\_ sack of cement  
(depth) (depth)

Packer Type: \_\_\_\_\_ Size: \_\_\_\_\_ Inch Set at: \_\_\_\_\_ Feet

Total Depth: \_\_\_\_\_ Plug Back Depth: \_\_\_\_\_ Plug Back Method: \_\_\_\_\_

**Geological Data:**

Formation Name	Formation Top	Formation Base	Completion Information
1. _____	At: _____	to _____ Feet	Perforation Interval _____ to _____ Feet or Open Hole Interval _____ to _____ Feet
2. _____	At: _____	to _____ Feet	Perforation Interval _____ to _____ Feet or Open Hole Interval _____ to _____ Feet

~~UNDER PENALTY OF PERJURY I HEREBY ATTEST THAT THE INFORMATION CONTAINED HEREIN IS TRUE AND CORRECT TO THE BEST OF MY KNOWLEDGE~~

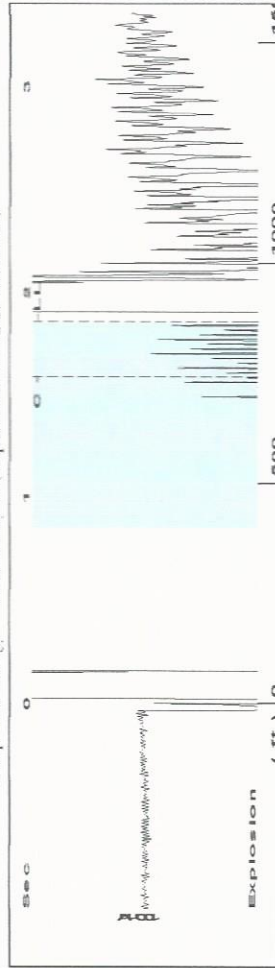
Submitted Electronically

<b>Do NOT Write in This Space - KCC USE ONLY</b>	Date Tested: _____	Results: _____	Date Plugged: _____	Date Repaired: _____	Date Put Back in Service: _____
	Review Completed by: _____ Comments: _____				
TA Approved: <input type="checkbox"/> Yes <input type="checkbox"/> Denied Date: _____					

**Mail to the Appropriate KCC Conservation Office:**

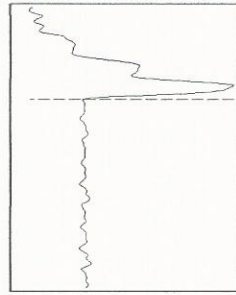
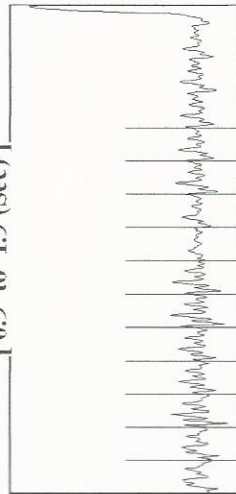
	KCC District Office #1 - 210 E. Frontview, Suite A, Dodge City, KS 67801	Phone 620.225.8888
	KCC District Office #2 / UPGS - 3450 N. Rock Road, Building 600, Suite 601, Wichita, KS 67226	Phone 316.630.4000
	KCC District Office #3 - 1500 SW Seventh Steet, Chanute, KS 66720	Phone 620.432.2300
	KCC District Office #4 - 2301 E. 13th Street, Hays, KS 67601-2651	Phone 785.625.0550

Group: Hart Energy Well: Vicky Jo (acquired on: 12/02/15 07:41:52)



Filter Type High Pass Automatic Collar Count Yes Time 1.86 sec  
 Manual Acoustic Velocity 28,258 ft/s Manual JTS sec 14.6413 Joints 27,3529 Jts  
 Depth 867.09 ft

[ 0.9 to 1.9 (Sec) ]



**Analysis Method: Automatic**

Group: Hart Energy Well: Vicky Jo (acquired on: 12/02/15 07:41:52)

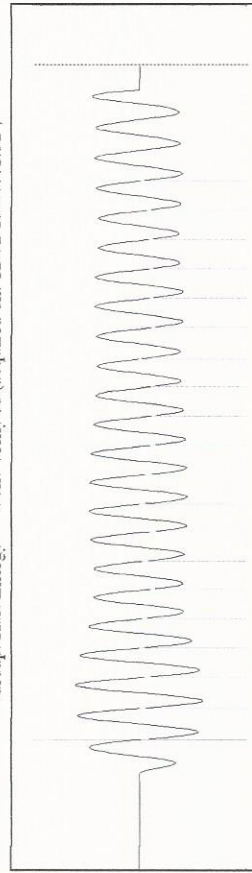
Production	Potential	Casing Pressure	Static
Current	- * - BBL/D	0.0 psi (g)	Oil Column Height
Oil	- * - BBL/D	Casing Pressure Buildup	MD 0 ft
Water	- * - BBL/D	- * - psi	Water Column Height
Gas	- * - Mscf/D	- * - min	MD 4133 ft
IPR Method	Veget	Gas Liquid Interface Pressure	Static BHP
PBHP SBHP	- * -	0.5 psi (g)	1879.5 psi (g)
Production Efficiency	0.0	Liquid Level Depth	
Oil	40 deg-API	867.09 ft	
Water	1.05 Sp.Gr.H2O	Pump Intake Depth	
Gas	1.03 Sp.Gr.AIR	5000.00 ft	
Acoustic Velocity	932.353 ft/s	Formation Depth	
		5000.00 ft	

Group: Hart Energy Well: Vicky Jo (acquired on: 12/02/15 07:41:52)

**NO PRESSURE DATA AVAILABLE**

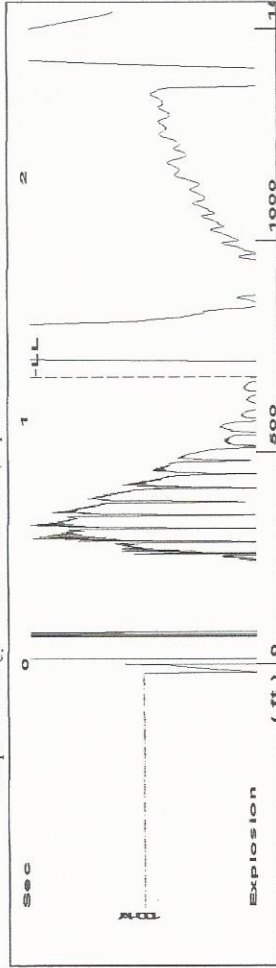
Change in Pressure 0.00 psi PT8496 Range  
 Change in Time 0.00 min

Group: Hart Energy Well: Vicky Jo (acquired on: 12/02/15 07:41:52)



Acoustic Velocity 932.353 ft/s Joints counted 19  
 Joints Per Second 14.7059 Jts sec 27.3529  
 Depth to liquid level 867.088 ft Filter Width 16.6413  
 Automatic Collar Count Yes Time to 1st Collar 1.592

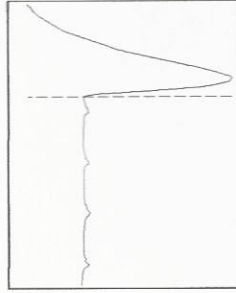
Group: Hart Energy Well: Connie Sue (acquired on: 12/02/15 07:53:51)



Time 1.178 sec  
 Joints 21.3675 Jts  
 Depth 677.35 ft

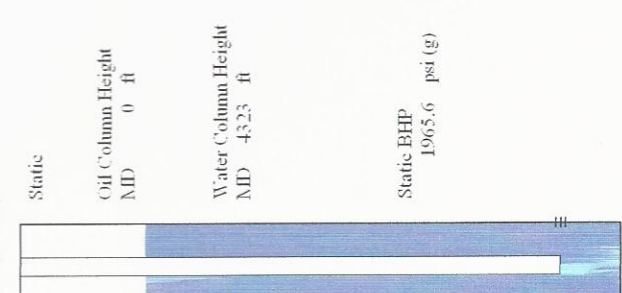
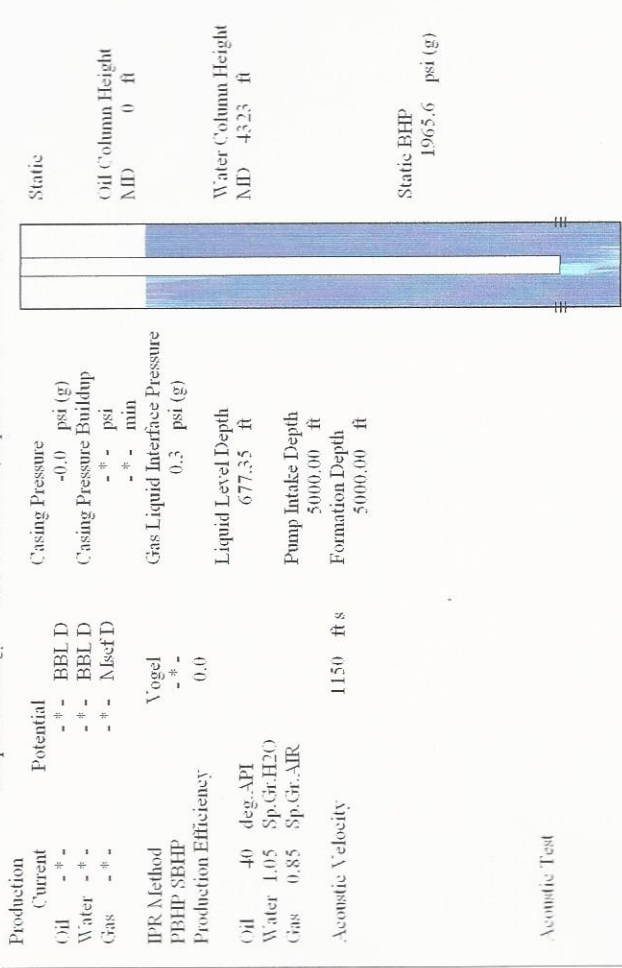
Liquid level calculated with  
 user supplied Acoustic Velocity

Acoustic Velocity 1150 ft/s



**Analysis Method: Acoustic Velocity**

Group: Hart Energy Well: Connie Sue (acquired on: 12/02/15 07:53:51)



Production	Potential	Casing Pressure	Static
Current	- * - BBL D	-0.0 psi (g)	Oil Column Height
Oil	- * - BBL D	Casing Pressure Buildup	MD 0 ft
Water	- * - BBL D	- * - psi	Water Column Height
Gas	- * - Mscf D	- * - min	MD -43.23 ft
IPR Method	Vogel	Gas Liquid Interface Pressure	Static BHP
PBHP/SBHP	- * -	0.3 psi (g)	1965.6 psi (g)
Production Efficiency	0.0	Liquid Level Depth	
Oil	40 deg API	677.35 ft	
Water	1.05 Sp.Gr.H <sub>2</sub> O	Pump Intake Depth	
Gas	0.85 Sp.Gr.AIR	5000.00 ft	
Acoustic Velocity	1150 ft/s	Formation Depth	
		5000.00 ft	

Acoustic Test

Group: Hart Energy Well: Connie Sue (acquired on: 12/02/15 07:53:51)

**NO PRESSURE DATA AVAILABLE**

Change in Pressure 0.00 psi PT8496  
 Range  
 Change in Time 0.00 min

Group: Hart Energy Well: Connie Sue (acquired on: 12/02/15 07:53:51)

**Entered Acoustic Velocity for Liquid Level depth determination**

Conservation Division  
District Office No. 2  
3450 N. Rock Road  
Building 600, Suite 601  
Wichita, KS 67226



Phone: 316-630-4000  
Fax: 316-630-4005  
<http://kcc.ks.gov/>

Shari Feist Albrecht, Chair  
Jay Scott Emler, Commissioner  
Pat Apple, Commissioner

Sam Brownback, Governor

December 08, 2015

William G Hart  
Hart Energies, LLC  
7122 S SHERIDAN RD  
STE 2-363  
TULSA, OK 74133

Re: Temporary Abandonment  
API 15-077-21738-00-00  
VICKIE JO 1  
SW/4 Sec.29-31S-09W  
Harper County, Kansas

Dear William G Hart:

Your application for Temporary Abandonment (TA) of the above-listed well is denied for the following reasons(s):

**High Fluid Level**

In accordance with K.A.R. 82-3-111, this well must be plugged or returned to service by January 07, 2016.

Sincerely,

Steve VanGieson