



**TEMPORARY ABANDONMENT WELL APPLICATION**

All blanks must be complete

OPERATOR: License# \_\_\_\_\_  
Name: \_\_\_\_\_  
Address 1: \_\_\_\_\_  
Address 2: \_\_\_\_\_  
City: \_\_\_\_\_ State: \_\_\_\_\_ Zip: \_\_\_\_\_ + \_\_\_\_\_  
Contact Person: \_\_\_\_\_  
Phone: ( \_\_\_\_\_ ) \_\_\_\_\_  
Contact Person Email: \_\_\_\_\_  
Field Contact Person: \_\_\_\_\_  
Field Contact Person Phone: ( \_\_\_\_\_ ) \_\_\_\_\_

API No. 15- \_\_\_\_\_  
Spot Description: \_\_\_\_\_  
\_\_\_\_ - \_\_\_\_ - \_\_\_\_ - \_\_\_\_ Sec. \_\_\_\_\_ Twp. \_\_\_\_\_ S. R. \_\_\_\_\_  E  W  
\_\_\_\_\_ feet from  N /  S Line of Section  
\_\_\_\_\_ feet from  E /  W Line of Section  
GPS Location: Lat: \_\_\_\_\_, Long: \_\_\_\_\_  
(e.g. xx.xxxxx) (e.g. -xxx.xxxxx)  
Datum:  NAD27  NAD83  WGS84  
County: \_\_\_\_\_ Elevation: \_\_\_\_\_  GL  KB  
Lease Name: \_\_\_\_\_ Well #: \_\_\_\_\_  
Well Type: (check one)  Oil  Gas  OG  WSW  Other: \_\_\_\_\_  
 SWD Permit #: \_\_\_\_\_  ENHR Permit #: \_\_\_\_\_  
 Gas Storage Permit #: \_\_\_\_\_  
Spud Date: \_\_\_\_\_ Date Shut-In: \_\_\_\_\_

	Conductor	Surface	Production	Intermediate	Liner	Tubing
Size						
Setting Depth						
Amount of Cement						
Top of Cement						
Bottom of Cement						

Casing Fluid Level from Surface: \_\_\_\_\_ How Determined? \_\_\_\_\_ Date: \_\_\_\_\_

Casing Squeeze(s): \_\_\_\_\_ to \_\_\_\_\_ w / \_\_\_\_\_ sacks of cement, \_\_\_\_\_ to \_\_\_\_\_ w / \_\_\_\_\_ sacks of cement. Date: \_\_\_\_\_  
(top) (bottom) (top) (bottom)

Do you have a valid Oil & Gas Lease?  Yes  No

Depth and Type:  Junk in Hole at \_\_\_\_\_  Tools in Hole at \_\_\_\_\_ Casing Leaks:  Yes  No Depth of casing leak(s): \_\_\_\_\_  
(depth) (depth)

Type Completion:  ALT. I  ALT. II Depth of:  DV Tool: \_\_\_\_\_ w / \_\_\_\_\_ sacks of cement  Port Collar: \_\_\_\_\_ w / \_\_\_\_\_ sack of cement  
(depth) (depth)

Packer Type: \_\_\_\_\_ Size: \_\_\_\_\_ Inch Set at: \_\_\_\_\_ Feet

Total Depth: \_\_\_\_\_ Plug Back Depth: \_\_\_\_\_ Plug Back Method: \_\_\_\_\_

**Geological Data:**

Formation Name	Formation Top	Formation Base	Completion Information
1. _____	At: _____	to _____ Feet	Perforation Interval _____ to _____ Feet or Open Hole Interval _____ to _____ Feet
2. _____	At: _____	to _____ Feet	Perforation Interval _____ to _____ Feet or Open Hole Interval _____ to _____ Feet

UNDER PENALTY OF PERJURY I HEREBY ATTEST THAT THE INFORMATION CONTAINED HEREIN IS TRUE AND CORRECT TO THE BEST OF MY KNOWLEDGE

Submitted Electronically

<b>Do NOT Write in This Space - KCC USE ONLY</b>	Date Tested: _____	Results: _____	Date Plugged: _____	Date Repaired: _____	Date Put Back in Service: _____
	Review Completed by: _____ Comments: _____				
TA Approved: <input type="checkbox"/> Yes <input type="checkbox"/> Denied Date: _____					

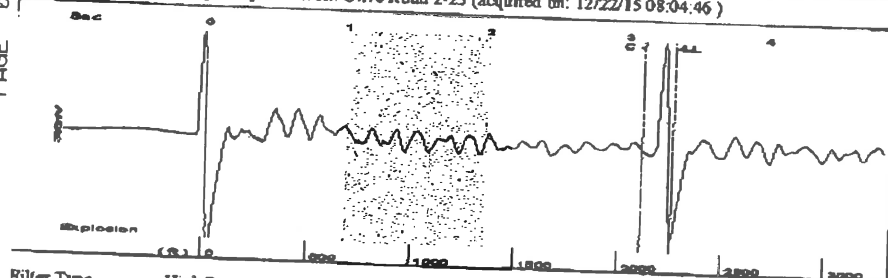
**Mail to the Appropriate KCC Conservation Office:**

	KCC District Office #1 - 210 E. Frontview, Suite A, Dodge City, KS 67801	Phone 620.225.8888
	KCC District Office #2 / UPGS - 3450 N. Rock Road, Building 600, Suite 601, Wichita, KS 67226	Phone 316.630.4000
	KCC District Office #3 - 1500 SW Seventh Steet, Chanute, KS 66720	Phone 620.432.2300
	KCC District Office #4 - 2301 E. 13th Street, Hays, KS 67601-2651	Phone 785.625.0550

Received Fax: Dec 22 2015 1:48PM Fax Station: FG Holl Co, LLC

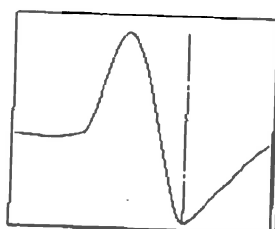
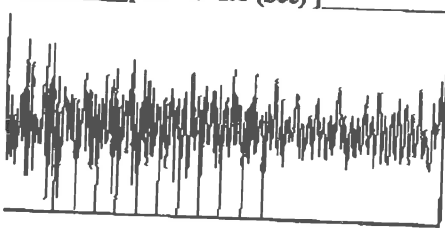
PAGE 03/06

Group: Belpre Well: Olive Rudd 2-23 (acquired on: 12/22/15 08:04:46)



Filter Type High Pass Automatic Collar Count Yes Time 3.334 sec  
 Manual Acoustic Velocity 1314.76 ft/s Manual JTS/sec 21.4592 Joints 72.4783 Jts  
 Depth 2254.07 ft

[ 1.0 to 2.0 (Sec) ]



Analysis Method: Automatic

Production  
 Oil - -  
 Water - -  
 Gas - -

Potential  
 - - BBL/D  
 - - BBL/D  
 - - Msc/D

IPR Method  
 PBHP/SBHP Vogel  
 Production Efficiency 0.0

Oil 40 deg.API  
 Water 1.05 Sp.Gr.H2O  
 Gas 0.63 Sp.Gr.AIR

Group: Belpre Well: Olive Rudd 2-23 (acquired on: 12/22/15 08:04:46)

Casing Pressure 431.3 psi (g)  
 Casing Pressure Buildup 0.039 psi  
 2.00 min  
 Gas/Liquid Interface Pressure 454.2 psi (g)

Liquid Level Depth 2254.07 ft  
 Pump Intake Depth 2457.00 ft  
 Formation Depth 2368.00 ft



Producing  
 Annular Gas Flow 0 Msc/D  
 % Liquid 100 %

Pump Intake 520.2 psi (g)  
 Producing BHP 491.3 psi (g)  
 Static BHP - - psi (g)

Formation Submergence  
 Total Gaseous Liquid Column HT (TVD) 203 ft  
 Equivalent Gas Free Liquid HT (TVD) 203 ft

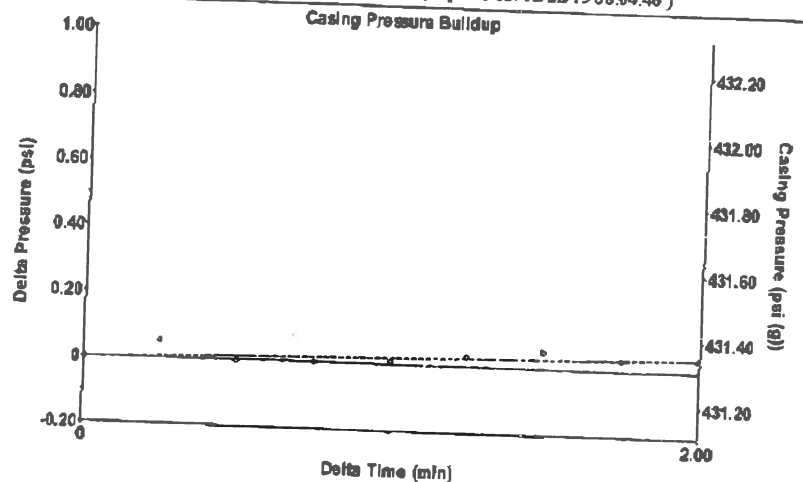
Acoustic Test

12/22/2015 12:53

6209953323

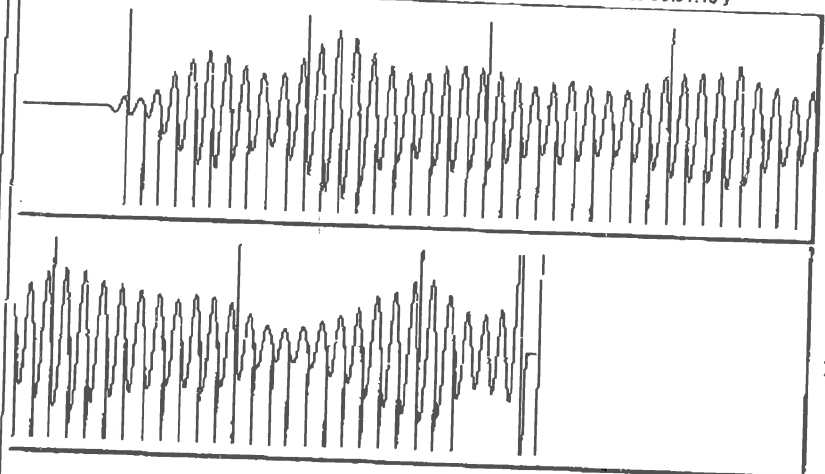
TALWELL MANAGEMENT by ECHOMETER Company 12/22/15 08:07:17

Group: Belpre Well: Olive Rudd 2-23 (acquired on: 12/22/15 08:04:46)



Change in Pressure 0.04 psi PT13440  
 Change in Time 2.00 min Range 0 - 7 psi

Group: Belpre Well: Olive Rudd 2-23 (acquired on: 12/22/15 08:04:46)



Acoustic Velocity 1352.87 ft/s Joints counted 62  
 Joints Per Second 21.739 Jts/sec Joints to liquid level 72.4783  
 Depth to liquid level 2254.07 ft Filter Width 19.4592  
 Automatic Collar Count Yes Time to 1st Collar 0.264 23.4592 3.116

Conservation Division  
District Office No. 1  
210 E. Frontview, Suite A  
Dodge City, KS 67801



Phone: 620-225-8888  
Fax: 620-225-8885  
<http://kcc.ks.gov/>

Shari Feist Albrecht, Chair  
Jay Scott Emler, Commissioner  
Pat Apple, Commissioner

Sam Brownback, Governor

December 29, 2015

Loveness Mpanje  
F. G. Holl Company L.L.C.  
9431 E CENTRAL STE 100  
WICHITA, KS 67206-2563

Re: Temporary Abandonment  
API 15-047-30076-00-02  
RUDD OLIVE OWWO 2-23  
SW/4 Sec.23-24S-17W  
Edwards County, Kansas

Dear Loveness Mpanje:

"Your temporary abandonment (TA) application for the well listed above has been approved. In accordance with K.A.R. 82-3-111 the TA status of this well will expire 12/29/2016.

- \* If you return this well to service or plug it, please notify the District Office.
- \* If you sell this well you are required to file a Transfer of Operator form, T-1.
- \* If the well will remain temporarily abandoned, you must submit a new TA application, CP-111, before 12/29/2016.

You may contact me at the number above if you have questions.

Very truly yours,

Michael Maier"