









**TRILOBITE TESTING, INC.**

# DRILL STEM TEST REPORT

Suemaour Expl. & Prod. LLC

**18-7S-28W Sheridan KS**

802 N. Carancahua  
Corpus Christi  
TX 78401  
ATTN: Bob Peterson

**Oelke #1**

Job Ticket: 64962

**DST#: 5**

Test Start: 2015.11.21 @ 20:55:00

## GENERAL INFORMATION:

Formation: **LKC "J-K-L"**

Deviated: No Whipstock: ft (KB)

Time Tool Opened: 23:23:30

Time Test Ended: 04:32:00

Test Type: Conventional Bottom Hole (Reset)

Tester: Robert Zodrow

Unit No: 78

**Interval: 4086.00 ft (KB) To 4168.00 ft (KB) (TVD)**

Reference Elevations: 2816.00 ft (KB)

Total Depth: 4168.00 ft (KB) (TVD)

2811.00 ft (CF)

Hole Diameter: 7.88 inches Hole Condition: Good

KB to GR/CF: 5.00 ft

**Serial #: 6752**

**Inside**

Press @ Run Depth: 26.64 psig @ 4087.00 ft (KB)

Capacity: 8000.00 psig

Start Date: 2015.11.21

End Date:

2015.11.22

Last Calib.:

2015.11.22

Start Time: 20:55:01

End Time:

04:32:00

Time On Btm:

2015.11.21 @ 23:23:20

Time Off Btm:

2015.11.22 @ 02:24:39

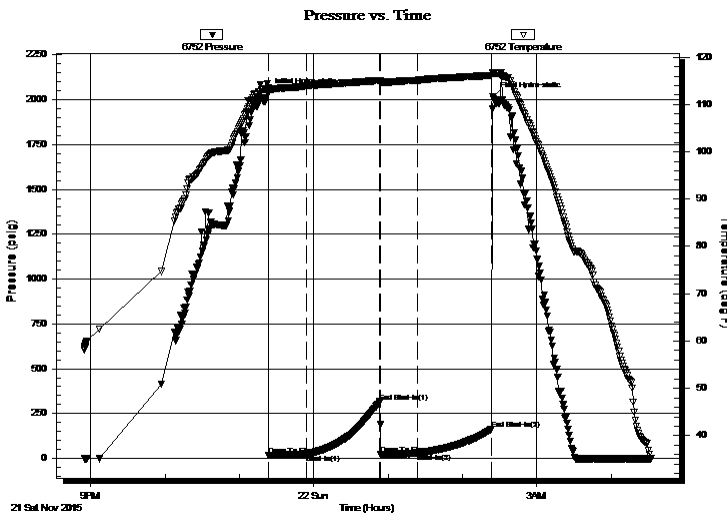
**TEST COMMENT:** 30-IF- Blow built to 1/2"

60-ISI- No return

30-FF- No blow

60-FSI- No return

## PRESSURE SUMMARY



Time (Min.)	Pressure (psig)	Temp (deg F)	Annotation
0	2040.45	113.54	Initial Hydro-static
1	17.58	112.99	Open To Flow (1)
31	22.13	113.94	Shut-In(1)
90	315.96	115.08	End Shut-In(1)
91	24.71	114.95	Open To Flow (2)
121	26.64	115.12	Shut-In(2)
181	163.29	116.14	End Shut-In(2)
182	2017.17	116.61	Final Hydro-static

## Recovery

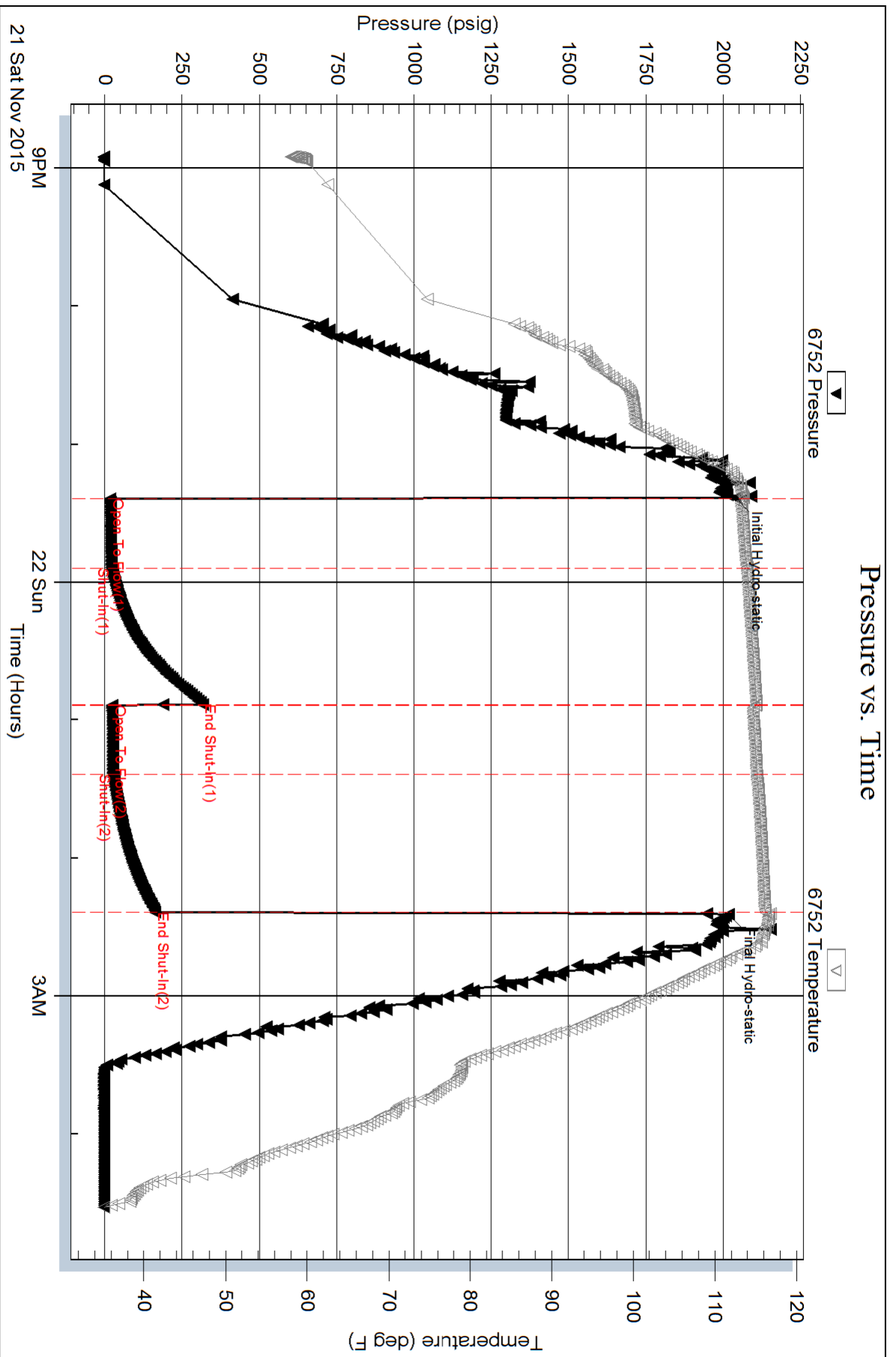
Length (ft)	Description	Volume (bbl)
10.00	OCM 5%O 95%M	0.05

## Gas Rates

Choke (inches)	Pressure (psig)	Gas Rate (Mcf/d)

\* Recovery from multiple tests



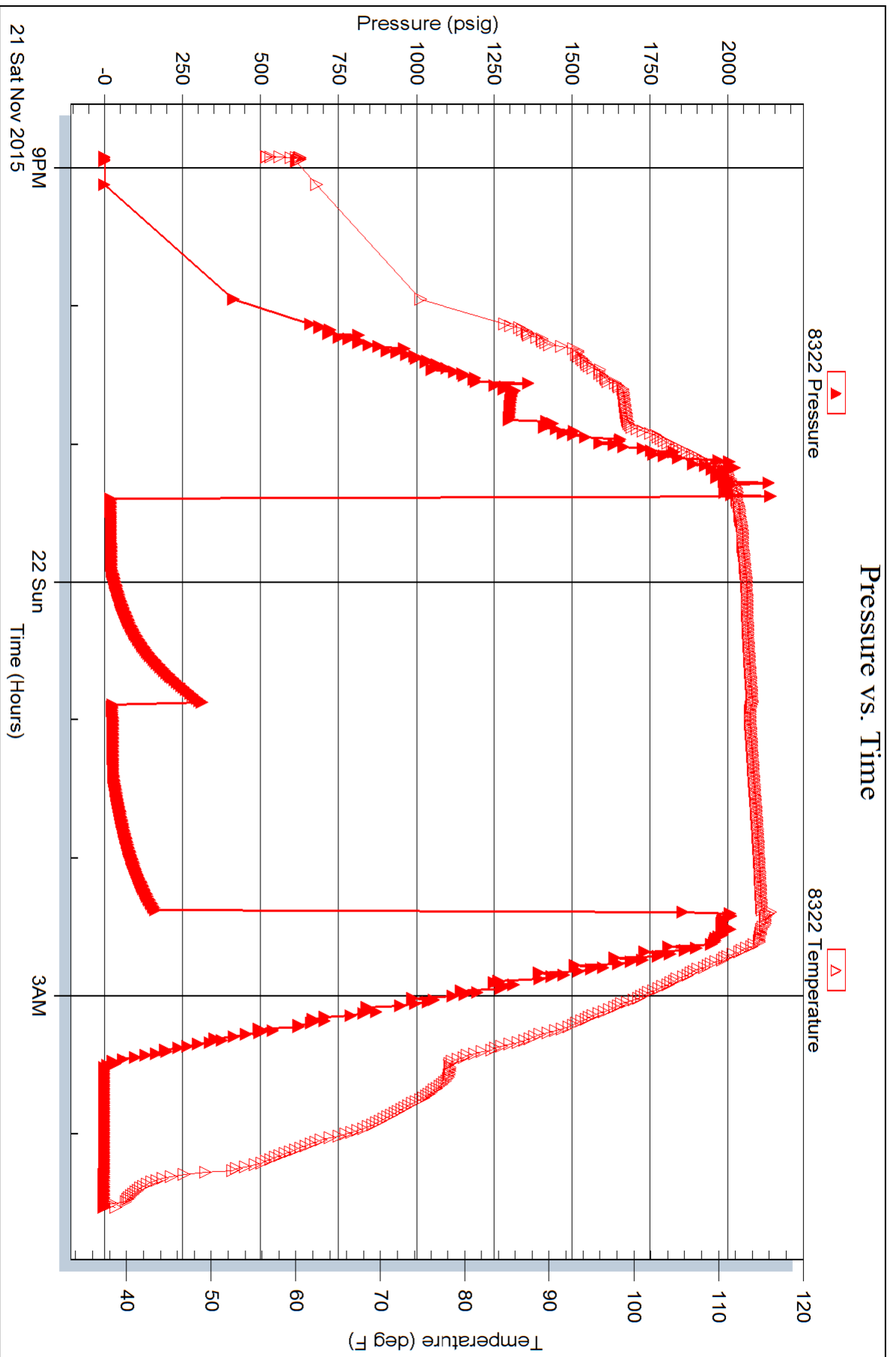


Serial #: 8322

Outside Suemaur Expl. & Prod. LLC

Oelke #1

DST Test Number: 5





**TRILOBITE TESTING, INC.**

# DRILL STEM TEST REPORT

Suemaour Expl. & Prod. LLC

**18-7S-28W Sheridan KS**

802 N. Carancahua  
Corpus Christi  
TX 78401  
ATTN: Bob Peterson

**Oelke #1**

Job Ticket: 64961

**DST#: 4**

Test Start: 2015.11.21 @ 09:45:00

## GENERAL INFORMATION:

Formation: **LKC "L"**

Deviated: No Whipstock: ft (KB)

Time Tool Opened: 12:08:50

Time Test Ended: 18:28:30

Test Type: Conventional Bottom Hole (Reset)

Tester: Ryan Nichols

Unit No: 78

**Interval: 4144.00 ft (KB) To 4168.00 ft (KB) (TVD)**

Reference Elevations: 2816.00 ft (KB)

Total Depth: 4168.00 ft (KB) (TVD)

2811.00 ft (CF)

Hole Diameter: 7.88 inches Hole Condition: Good

KB to GR/CF: 5.00 ft

**Serial #: 6752 Inside**

Press @ Run Depth: 15.58 psig @ 4145.00 ft (KB)

Capacity: 8000.00 psig

Start Date: 2015.11.21

End Date:

2015.11.21

Last Calib.:

2015.11.21

Start Time: 09:45:01

End Time:

18:28:30

Time On Btm:

2015.11.21 @ 12:08:40

Time Off Btm:

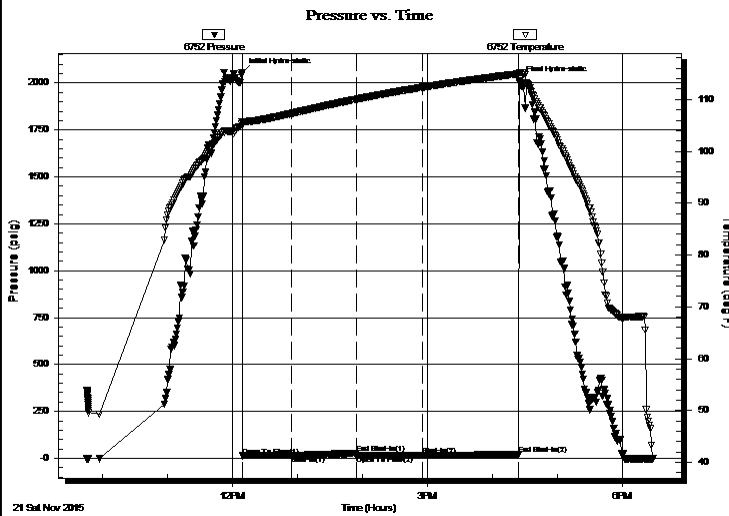
2015.11.21 @ 16:25:09

**TEST COMMENT:** 30-IS- Surface blow died in 12 mins , Surface blow started again in 14 mins died in 11 mins

60-IS- Surface blow on return

60-FSI- Blow started in 12 mins built to surface

90-FSI- Surface blow on return



## PRESSURE SUMMARY

Time (Min.)	Pressure (psig)	Temp (deg F)	Annotation
0	2056.39	105.77	Initial Hydro-static
1	13.42	104.88	Open To Flow (1)
46	15.33	107.28	Shut-In(1)
106	26.26	110.03	End Shut-In(1)
106	15.06	110.03	Open To Flow (2)
167	15.58	112.32	Shut-In(2)
256	19.64	114.94	End Shut-In(2)
257	2011.04	115.22	Final Hydro-static

## Recovery

Length (ft)	Description	Volume (bbl)
1.00		0.00

## Gas Rates

	Choke (inches)	Pressure (psig)	Gas Rate (Mcf/d)

\* Recovery from multiple tests





Serial #: 6752

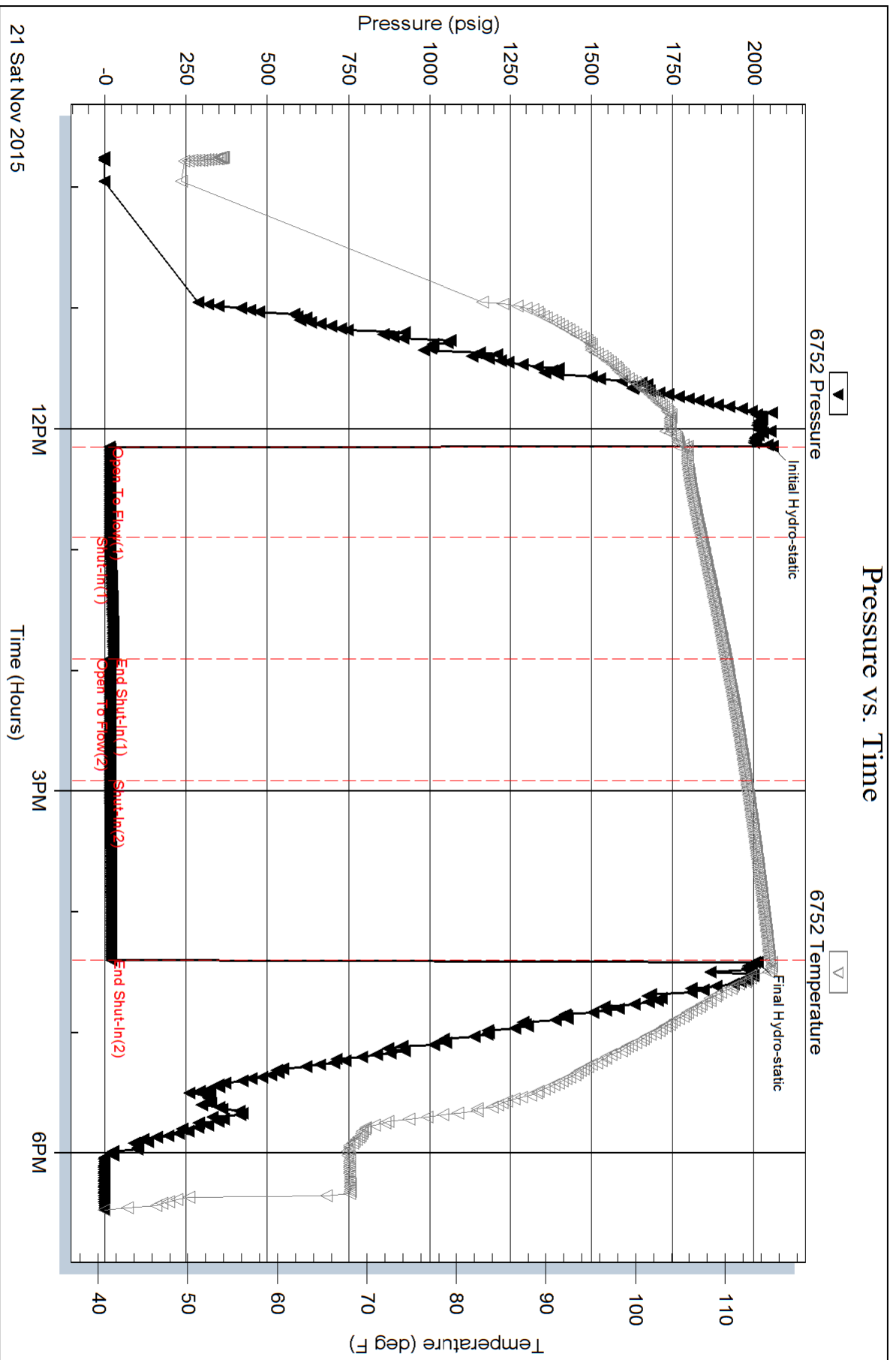
Inside

Suenaar Expl. & Prod. LLC

Oelke #1

DST Test Number: 4

# Pressure vs. Time



Trilobite Testing, Inc

Ref. No: 64961

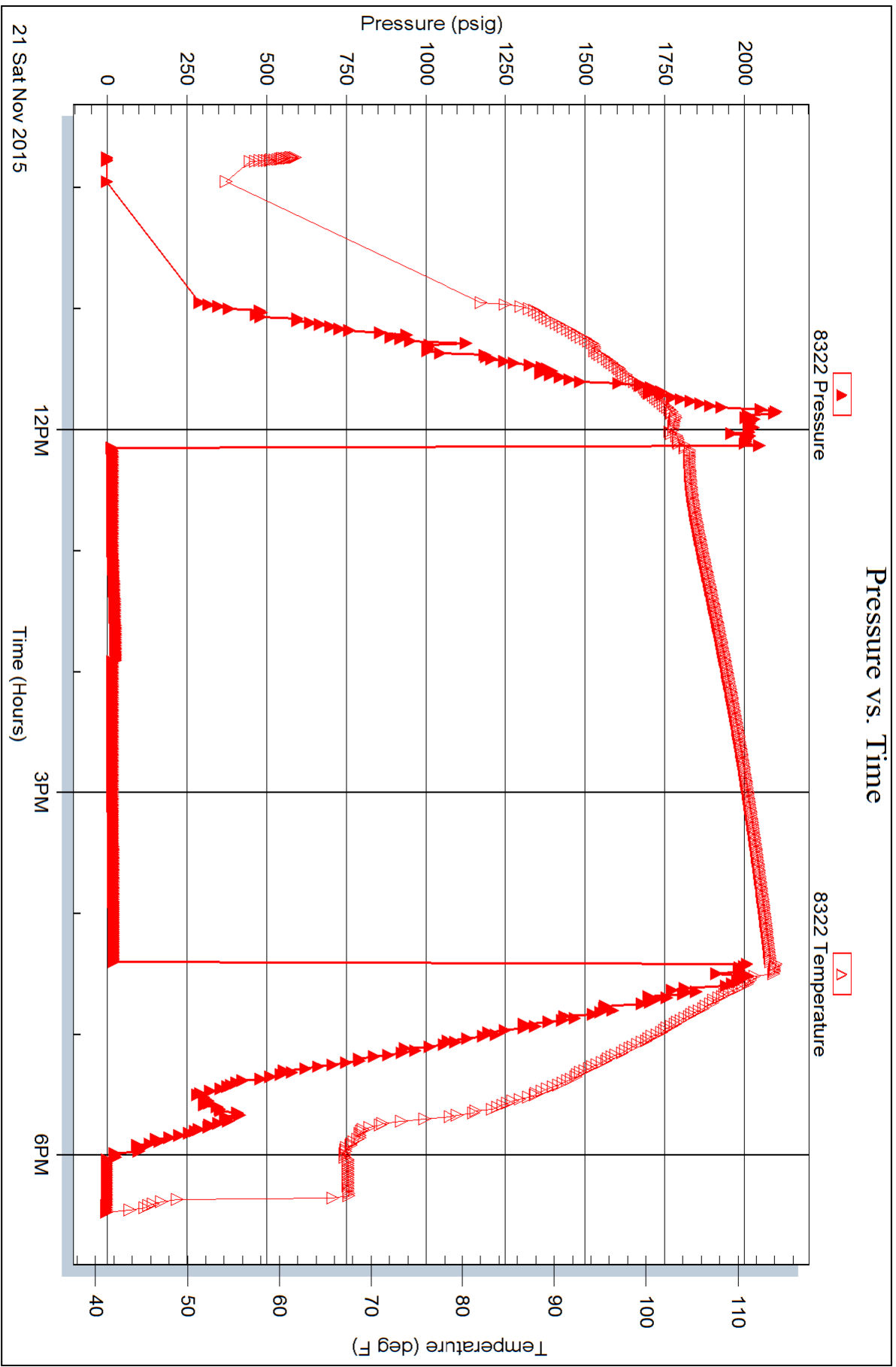
Printed: 2015.11.21 @ 20:07:45

Serial #: 8322

Outside Suemaur Expl. & Prod. LLC

Oelke #1

DST Test Number: 4



Trilobite Testing, Inc

Ref. No: 64961

Printed: 2015.11.21 @ 20:07:45



**TRILOBITE TESTING, INC.**

# DRILL STEM TEST REPORT

Suemar Expl. & Prod. LLC

**18-7S-28W Sheridan KS**

802 N. Carancahua  
Corpus Christi  
TX 78401

**Oelke #1**

Job Ticket: 64960

**DST#: 3**

ATTN: Bob Peterson

Test Start: 2015.11.20 @ 17:45:00

## GENERAL INFORMATION:

Formation: **LKC "K"**  
 Deviated: No Whipstock: ft (KB)  
 Time Tool Opened: 20:48:50  
 Time Test Ended: 01:49:09  
 Interval: **4118.00 ft (KB) To 4145.00 ft (KB) (TVD)**  
 Total Depth: 4145.00 ft (KB) (TVD)  
 Hole Diameter: 7.88 inches Hole Condition: Fair  
 Test Type: Conventional Bottom Hole (Reset)  
 Tester: Robert Z  
 Unit No: 78  
 Reference Elevations: 2816.00 ft (KB)  
 2811.00 ft (CF)  
 KB to GR/CF: 5.00 ft

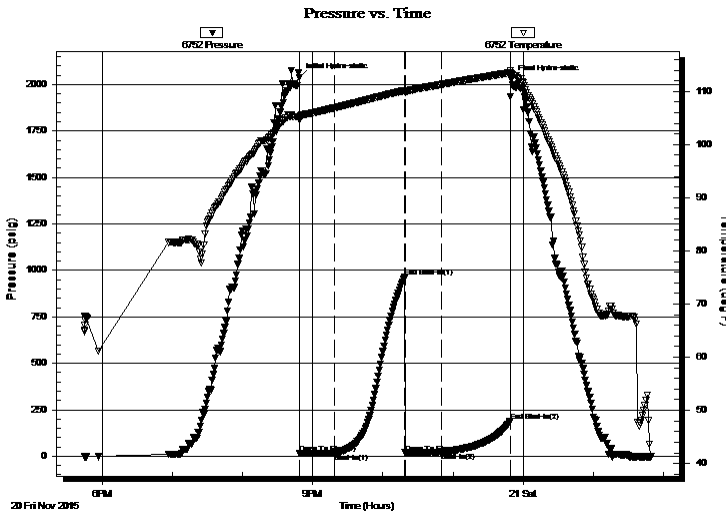
## Serial #: 6752

Inside

Press @ Run Depth: 20.99 psig @ 4119.00 ft (KB)  
 Start Date: 2015.11.20 End Date: 2015.11.21  
 Start Time: 17:45:01 End Time: 01:49:10  
 Capacity: 8000.00 psig  
 Last Calib.: 2015.11.21  
 Time On Btm: 2015.11.20 @ 20:48:40  
 Time Off Btm: 2015.11.20 @ 23:49:50

TEST COMMENT: 30-IF- Surface blow died in 9 mins  
 60-ISI- No return  
 30-FF- No blow  
 60-FSI- No return

## PRESSURE SUMMARY



Time (Min.)	Pressure (psig)	Temp (deg F)	Annotation
0	2038.77	105.04	Initial Hydro-static
1	14.69	104.56	Open To Flow (1)
30	17.64	106.90	Shut-In(1)
91	964.15	110.18	End Shut-In(1)
91	19.11	109.84	Open To Flow (2)
122	20.99	111.29	Shut-In(2)
180	187.85	113.50	End Shut-In(2)
182	2028.92	113.29	Final Hydro-static

## Recovery

Length (ft)	Description	Volume (bbl)
1.00	OCM 10%O 90%M	0.00
1.00	OIL 100%O	0.00

\* Recovery from multiple tests

## Gas Rates

Choke (inches)	Pressure (psig)	Gas Rate (Mcf/d)



**TRILOBITE  
TESTING, INC.**

# DRILL STEM TEST REPORT

**FLUID SUMMARY**

Suemar Expl. & Prod. LLC

**18-7S-28W Sheridan KS**

802 N. Carancahua  
Corpus Christi  
TX 78401

**Oelke #1**

Job Ticket: 64960

**DST#: 3**

ATTN: Bob Peterson

Test Start: 2015.11.20 @ 17:45:00

## Mud and Cushion Information

Mud Type: Gel Chem

Mud Weight: 9.00 lb/gal

Viscosity: 46.00 sec/qt

Water Loss: 5.60 in<sup>3</sup>

Resistivity: 0.00 ohm.m

Salinity: 900.00 ppm

Filter Cake: 2.00 inches

Cushion Type:

Cushion Length: ft

Cushion Volume: bbl

Gas Cushion Type:

Gas Cushion Pressure: psig

Oil API:

Water Salinity: deg API

ppm

## Recovery Information

Recovery Table

Length ft	Description	Volume bbl
1.00	OCM 10%O 90%M	0.005
1.00	OIL 100%O	0.005

Total Length: 2.00 ft      Total Volume: 0.010 bbl

Num Fluid Samples: 0

Num Gas Bombs: 0

Serial #:

Laboratory Name:

Laboratory Location:

Recovery Comments:

Serial #: 6752

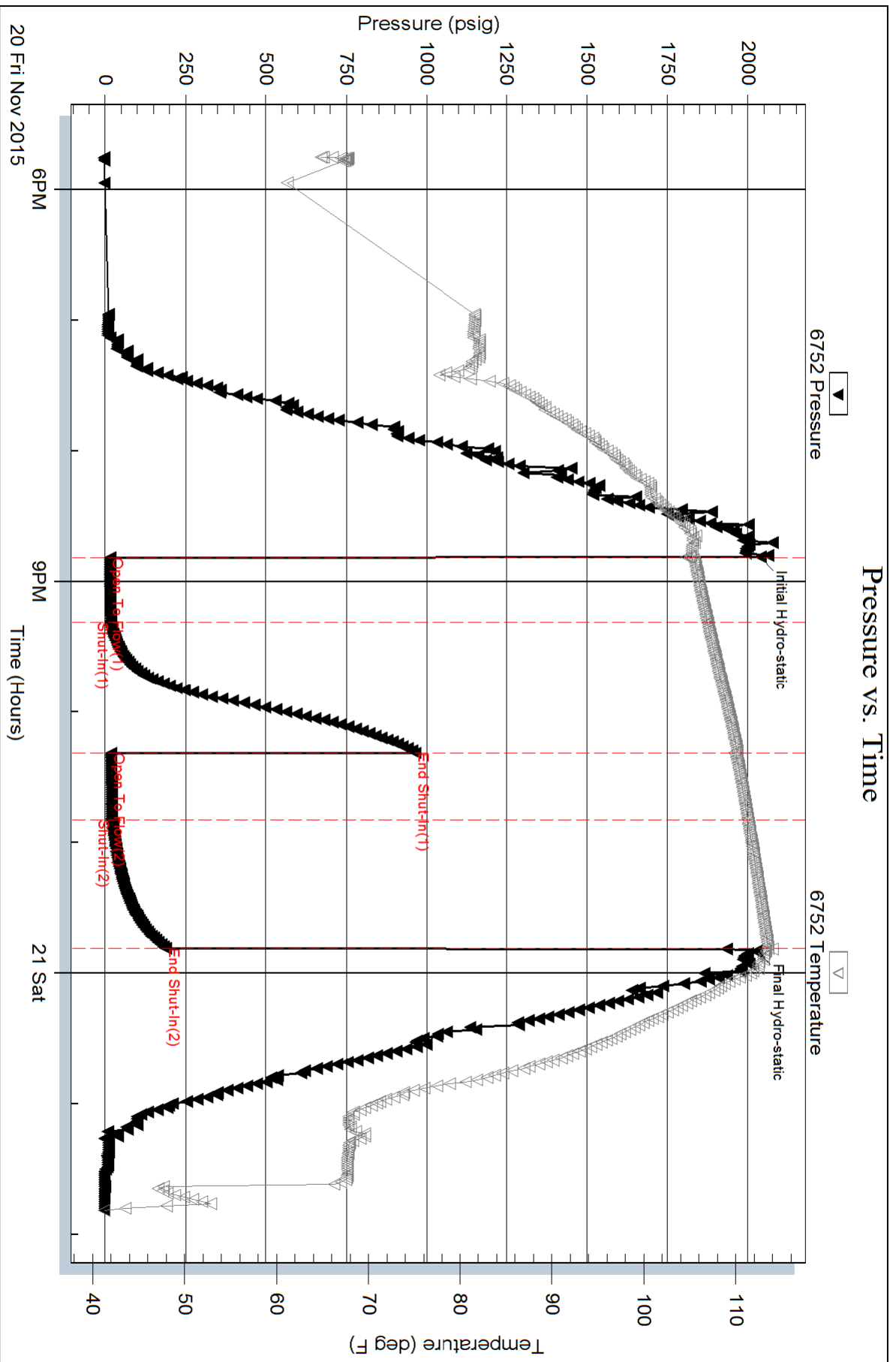
Inside

Suennar Expl. & Prod. LLC

Oelke #1

DST Test Number: 3

# Pressure vs. Time





**TRILOBITE TESTING, INC**

# DRILL STEM TEST REPORT

Suemaour Expl. & Prod. LLC

**18-7S-28W Sheridan KS**

802 N. Carancahua  
Corpus Christi  
TX 78401  
ATTN: Bob Peterson

**Oelke #1**

Job Ticket: 62799

**DST#: 2**

Test Start: 2015.11.20 @ 01:03:00

## GENERAL INFORMATION:

Formation: **LKC " J "**

Deviated: No Whipstock: ft (KB)

Time Tool Opened: 03:38:30

Time Test Ended: 09:43:00

Test Type: Conventional Bottom Hole (Reset)

Tester: Ryan Nichols

Unit No: 78

**Interval: 4086.00 ft (KB) To 4118.00 ft (KB) (TVD)**

Reference Elevations: 2816.00 ft (KB)

Total Depth: 4118.00 ft (KB) (TVD)

2811.00 ft (CF)

Hole Diameter: 7.88 inches Hole Condition: Good

KB to GR/CF: 5.00 ft

**Serial #: 6752**

**Inside**

Press@RunDepth: 20.95 psig @ 4087.00 ft (KB)

Capacity: 8000.00 psig

Start Date: 2015.11.20

End Date:

2015.11.20

Last Calib.: 2015.11.20

Start Time: 01:03:01

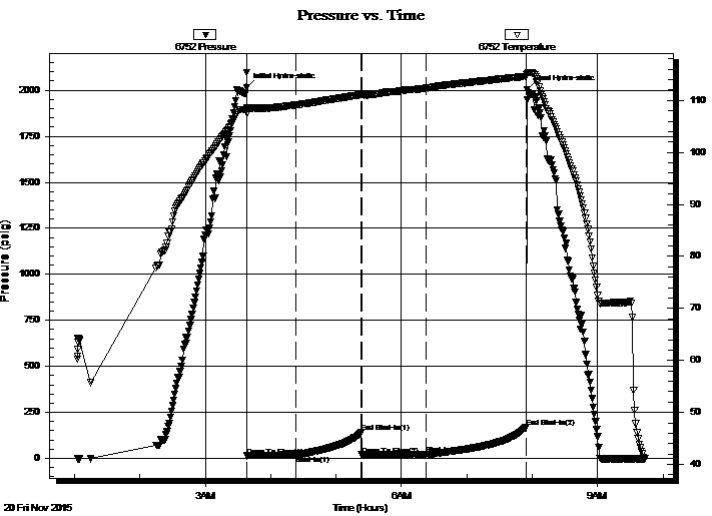
End Time:

09:43:00

Time On Btm: 2015.11.20 @ 03:38:20

Time Off Btm: 2015.11.20 @ 07:55:20

**TEST COMMENT:** 45 IF - Surface blow built to 1" (in diesel)  
60 ISI - No return  
60 FF - Surface blow built to 1"  
90 FSI - No return



## PRESSURE SUMMARY

Time (Min.)	Pressure (psig)	Temp (deg F)	Annotation
0	2014.93	108.50	Initial Hydro-static
1	13.34	107.54	Open To Flow (1)
45	16.72	109.12	Shut-In(1)
105	139.41	111.10	End Shut-In(1)
105	18.66	111.03	Open To Flow (2)
165	20.95	112.36	Shut-In(2)
257	169.92	114.63	End Shut-In(2)
258	2004.79	115.20	Final Hydro-static

## Recovery

Length (ft)	Description	Volume (bbl)
10.00	OCM - 20%o - 80%M	0.05
2.00	Free Oil 100%o	0.01

\* Recovery from multiple tests

## Gas Rates

	Choke (inches)	Pressure (psig)	Gas Rate (Mcf/d)





Serial #: 6752

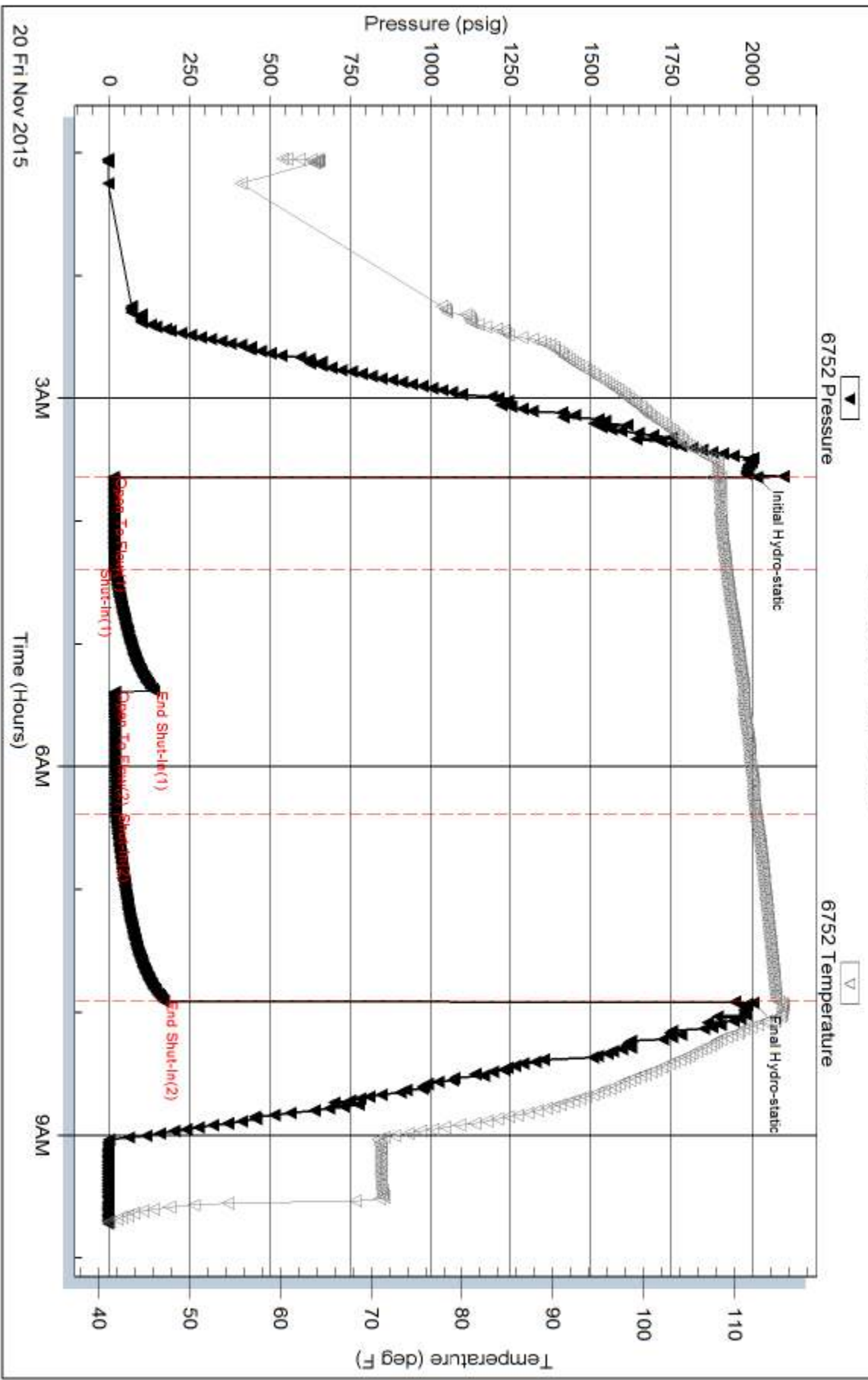
Inside

Suenaar Expl. & Prod. LLC

Well #1

DST Test Number: 2

### Pressure vs. Time



Trilobite Testing, Inc

Ref. No: 62799

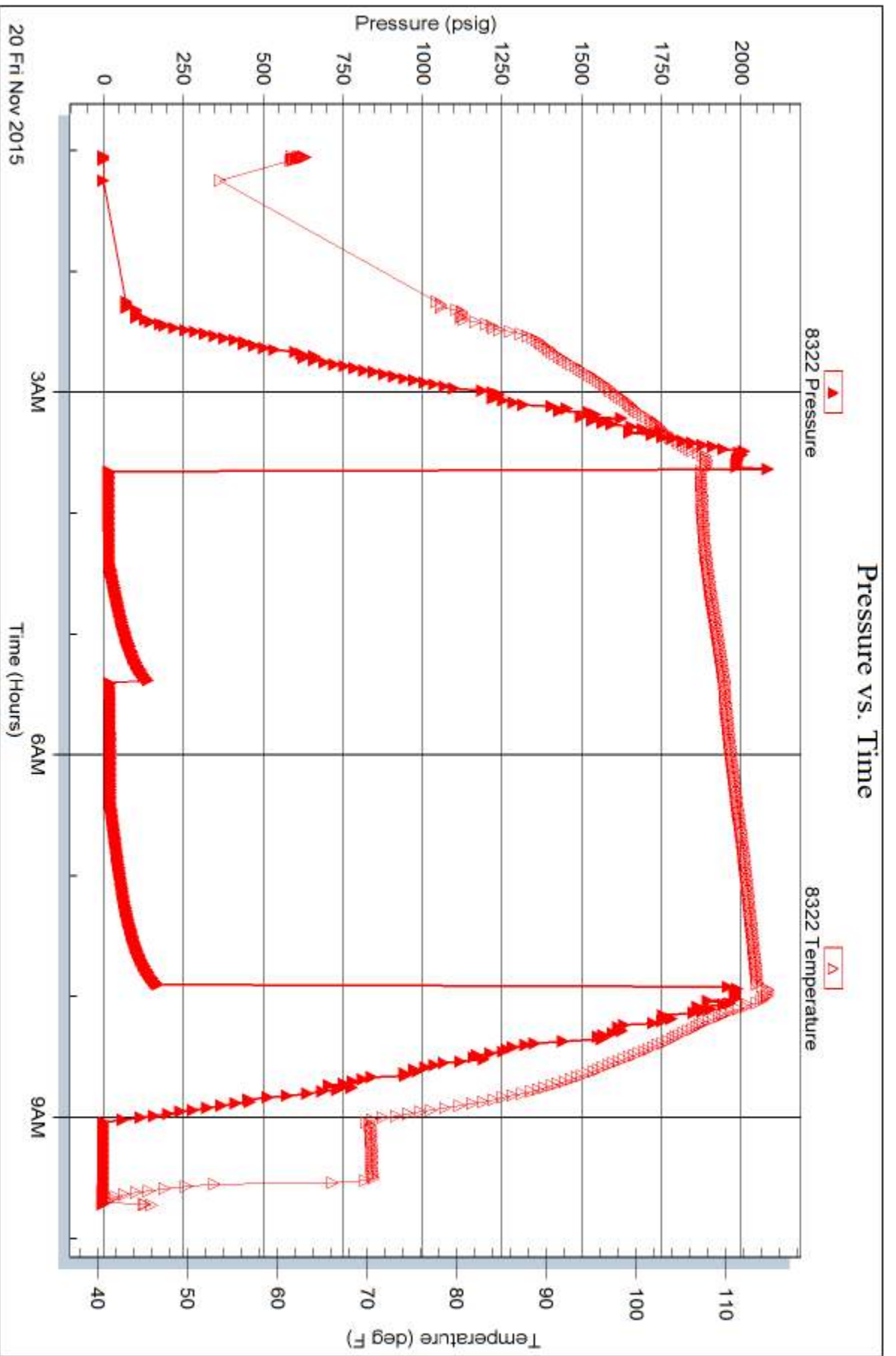
Printed: 2015.11.20 @ 13:51:15

Serial #: 8322

Outside Suenor Expl. & Prod. LLC

Oelike #1

DST Test Number: 2





**TRILOBITE TESTING, INC.**

# DRILL STEM TEST REPORT

Suemaaur Expl. & Prod. LLC

**18-7S-28W Sheridan KS**

802 N. Carancahua  
Corpus Christi  
TX 78401  
ATTN: Bob Peterson

**Oelke #1**

Job Ticket: 62798

**DST#: 1**

Test Start: 2015.11.19 @ 08:23:00

## GENERAL INFORMATION:

Formation: **LKC "H-1"**

Deviated: No Whipstock: ft (KB)

Time Tool Opened: 11:35:20

Time Test Ended: 17:29:40

Test Type: Conventional Bottom Hole (Initial)

Tester: Ryan Nichols

Unit No: 78

**Interval: 4058.00 ft (KB) To 4108.00 ft (KB) (TVD)**

Reference Elevations: 2816.00 ft (KB)

Total Depth: 4108.00 ft (KB) (TVD)

2811.00 ft (CF)

Hole Diameter: 7.88 inches Hole Condition: Good

KB to GR/CF: 5.00 ft

**Serial #: 6752**

**Inside**

Press @ Run Depth: 58.72 psig @ 4059.00 ft (KB)

Capacity: 8000.00 psig

Start Date: 2015.11.19

End Date:

2015.11.19

Last Calib.:

2015.11.19

Start Time:

08:23:01

End Time:

17:29:40

Time On Btm:

2015.11.19 @ 11:35:10

Time Off Btm:

2015.11.19 @ 15:23:00

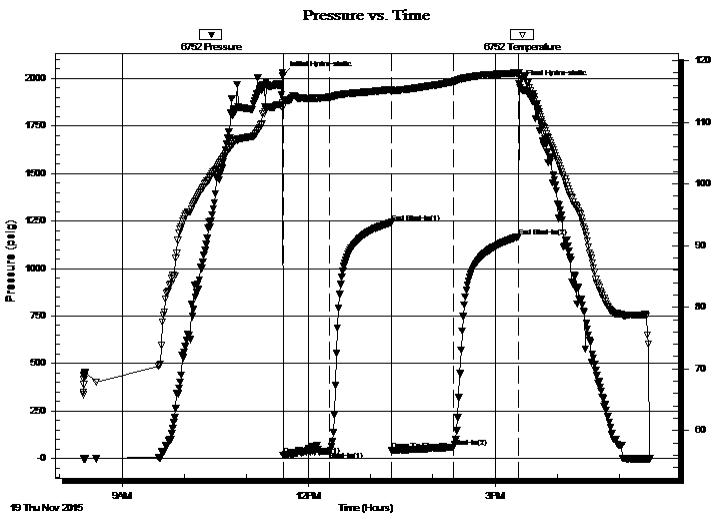
**TEST COMMENT:** 45 IF - Surface blow built to 3/4" died back to Surface blow built to 3/4"

60 ISI - No return

60 FF - Surface blow built to 1"

60 FSI - No return

## PRESSURE SUMMARY



Time (Min.)	Pressure (psig)	Temp (deg F)	Annotation
0	2015.01	113.22	Initial Hydro-static
1	15.60	112.53	Open To Flow (1)
45	37.65	114.08	Shut-In(1)
105	1241.76	115.30	End Shut-In(1)
106	41.21	114.97	Open To Flow (2)
165	58.72	116.62	Shut-In(2)
227	1166.54	118.00	End Shut-In(2)
228	1970.47	118.09	Final Hydro-static

## Recovery

Length (ft)	Description	Volume (bbl)
80.00	Mud w / oil spots 100%m	0.39

## Gas Rates

	Choke (inches)	Pressure (psig)	Gas Rate (Mcf/d)





**TRILOBITE  
TESTING, INC.**

# DRILL STEM TEST REPORT

**FLUID SUMMARY**

Suemaaur Expl. & Prod. LLC

**18-7S-28W Sheridan KS**

802 N. Carancahua  
Corpus Christi  
TX 78401

**Oelke #1**

Job Ticket: 62798

**DST#: 1**

ATTN: Bob Peterson

Test Start: 2015.11.19 @ 08:23:00

## Mud and Cushion Information

Mud Type: Gel Chem

Cushion Type:

Oil API:

deg API

Mud Weight: 9.00 lb/gal

Cushion Length:

ft

Water Salinity:

ppm

Viscosity: 56.00 sec/qt

Cushion Volume:

bbbl

Water Loss: 5.20 in<sup>3</sup>

Gas Cushion Type:

Resistivity: ohm.m

Gas Cushion Pressure:

psig

Salinity: 900.00 ppm

Filter Cake: 2.00 inches

## Recovery Information

Recovery Table

Length ft	Description	Volume bbl
80.00	Mud w / oil spots 100%m	0.393

Total Length: 80.00 ft      Total Volume: 0.393 bbl

Num Fluid Samples: 0

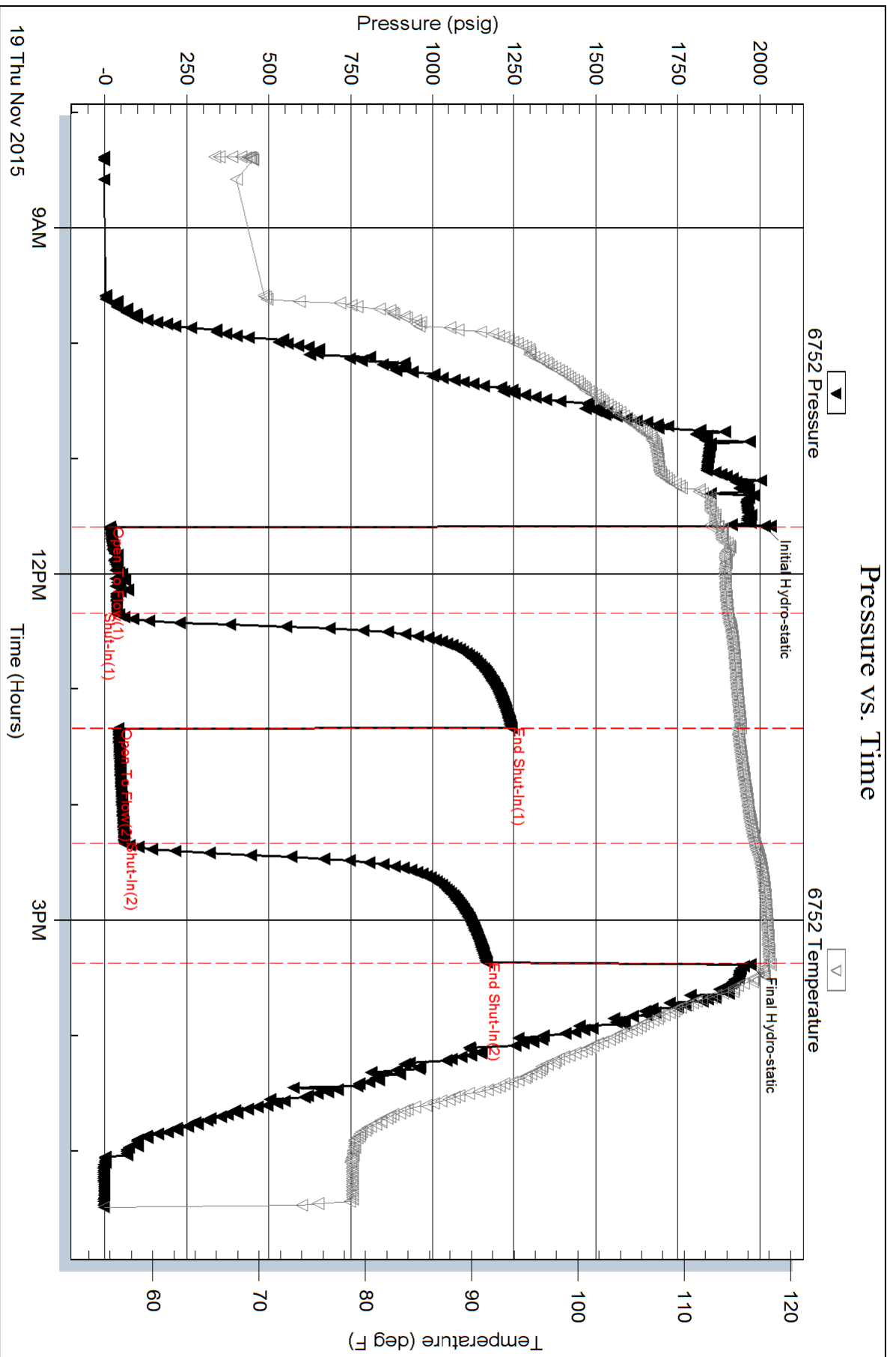
Num Gas Bombs: 0

Serial #:

Laboratory Name:

Laboratory Location:

Recovery Comments:

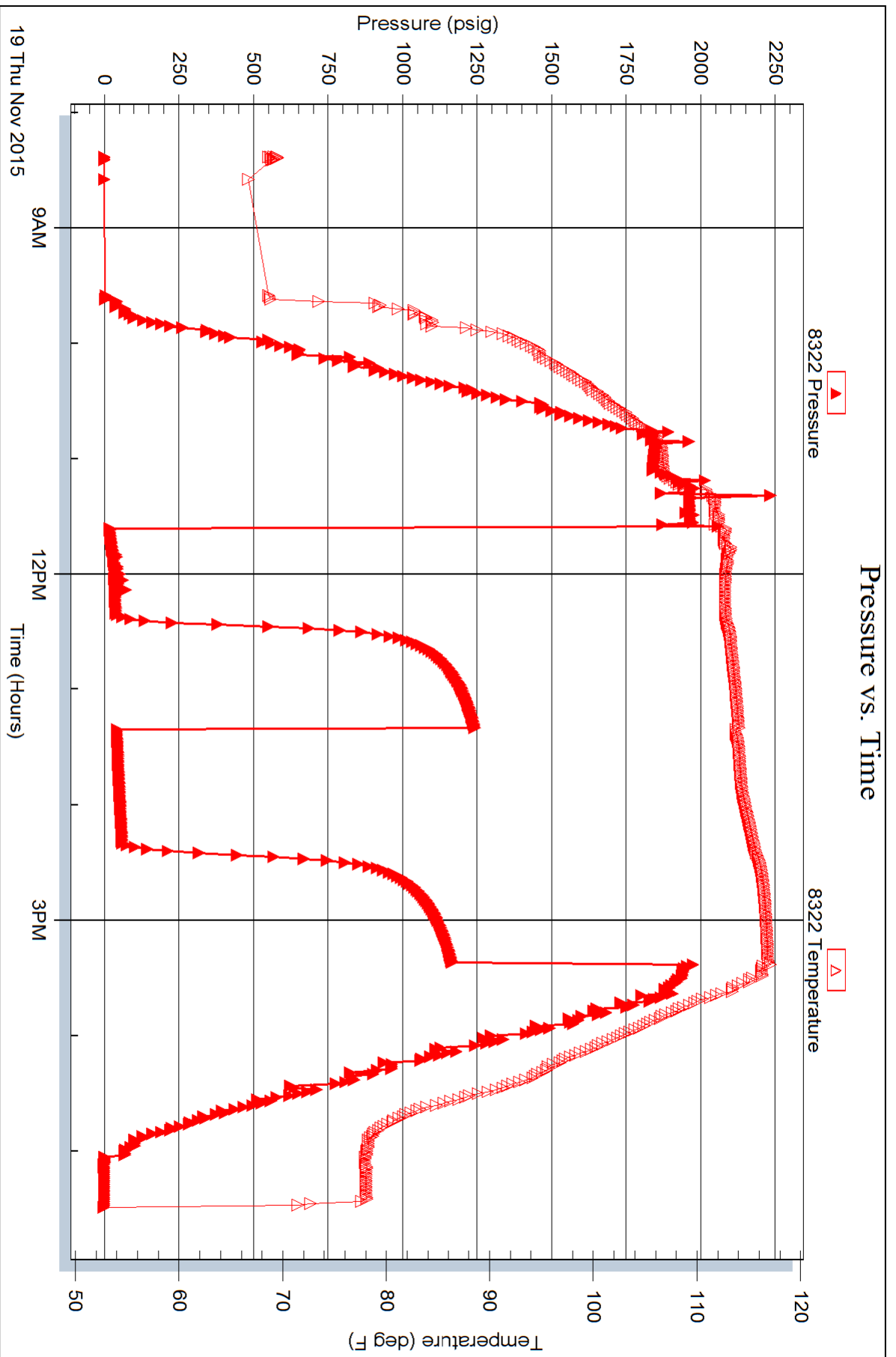


Serial #: 8322

Outside Suenamur Expl. & Prod. LLC

Oelke #1

DST Test Number: 1





Date 11-23-15 District GB Ticket No. 65739  
 Company Sueman Rig Wink 27  
 Lease DEIK Well No. 1  
 County Shelby State MS  
 Location 18-7-2-28W Field \_\_\_\_\_

CEMENT DATA:

Spacer Type: \_\_\_\_\_  
 Amt. \_\_\_\_\_ Sks Yield \_\_\_\_\_ ft<sup>3</sup>/sk Density \_\_\_\_\_ PPG

LEAD: Pump Time \_\_\_\_\_ hrs. Type 60/40+4%  
+4%#10  
 Excess \_\_\_\_\_  
 Amt. 255 Sks Yield 1.40 ft<sup>3</sup>/sk Density 14.5 PPG

TAIL: Pump Time \_\_\_\_\_ hrs. Type \_\_\_\_\_  
 Excess \_\_\_\_\_  
 Amt. \_\_\_\_\_ Sks Yield \_\_\_\_\_ ft<sup>3</sup>/sk Density \_\_\_\_\_ PPG

WATER: Lead \_\_\_\_\_ gals/sk Tail \_\_\_\_\_ gals/sk Total \_\_\_\_\_ Bbls.

Pump Trucks Used 3 Bldo / Bulon

Bulk Equip. 610/170

CASING DATA: Conductor  PTA  Squeeze  Misc   
 Surface  Intermediate  Production  Liner   
 Size \_\_\_\_\_ Type \_\_\_\_\_ Weight \_\_\_\_\_ Collar \_\_\_\_\_

Casing Depths: Top \_\_\_\_\_ Bottom \_\_\_\_\_

Drill Pipe: Size \_\_\_\_\_ Weight \_\_\_\_\_ Collars \_\_\_\_\_  
 Open Hole: Size \_\_\_\_\_ T.D. \_\_\_\_\_ ft. P.B. to \_\_\_\_\_ ft.

CAPACITY FACTORS:  
 Casing: Bbls/Lin. ft. \_\_\_\_\_ Lin. ft./Bbl. \_\_\_\_\_  
 Open Holes: Bbls/Lin. ft. \_\_\_\_\_ Lin. ft./Bbl. \_\_\_\_\_  
 Drill Pipe: 4 1/2 Bbls/Lin. ft. .0142 Lin. ft./Bbl. \_\_\_\_\_  
 Annulus: Bbls/Lin. ft. \_\_\_\_\_ Lin. ft./Bbl. \_\_\_\_\_  
 Bbls/Lin. ft. \_\_\_\_\_ Lin. ft./Bbl. \_\_\_\_\_  
 Perforations: From \_\_\_\_\_ ft. to \_\_\_\_\_ ft. Amt. \_\_\_\_\_

Float Equip: Manufacturer \_\_\_\_\_  
 Shoe: Type \_\_\_\_\_ Depth \_\_\_\_\_

Float: Type \_\_\_\_\_ Depth \_\_\_\_\_  
 Centralizers: Quantity \_\_\_\_\_ Plugs Top \_\_\_\_\_ Btm. \_\_\_\_\_

Stage Collars \_\_\_\_\_  
 Special Equip. \_\_\_\_\_

Disp. Fluid Type fresh Amt. \_\_\_\_\_ Bbls. Weight 8.34 PPG  
 Mud Type \_\_\_\_\_ Weight \_\_\_\_\_ PPG

COMPANY REPRESENTATIVE \_\_\_\_\_

CEMENTER Wm D...

TIME	PRESSURES PSI		FLUID PUMPED DATA			REMARKS
	DRILL PIPE CASING	ANNULUS	TOTAL FLUID	Pumped Per Time Period	RATE Bbls Min.	
						on Job Site Had Safety Meeting Spot Trucks Rig up
7:00 PM			12.46	12.46	5	1st Plug Mix 50SX
			49.46	37	5	Disp 5 BBLs H <sub>2</sub> O 32 BBLs mud
			54.46	5	3	2nd Plug at 1711 head hole
			79.39	24.93	5	5 BBLs water - Ahead
			94.39	15	3	Mix 100SX 60/40+4%+4%#10 Disp 15 BBLs
			106.85	12.46	3	3rd Plug 399 head hole
			109.29	2.44	3	Mix 50SX 60/40+4%+4%#10 Disp 2.44 BBLs
			111.78	2.49	2	4th Plug 40 feet wipe - Plug Mix 10SX
			119.24	7.48	2	Rathole mix 30SX
8:00 PM			123	3.74	2	Mud hole mix 15SX
						wash up Rig Down



# GEOLOGIST'S REPORT

## DRILLING TIME AND SAMPLE LOG

**SUEMAUR EXPLORATION & PROD., LLC**

WELL: OELKE #1  
 LOC.: 692' FNL & 1503' FEL  
 NE SE NW NE  
 SEC. 18-7-28W  
 SHERIDAN COUNTY, KANSAS  
 API: 15-179-21412-00-00

**ELEVATION**  
 KB: 2816  
 GL: 2811  
 LOG MEASURED  
 FROM: KB

**SURFACE CASING**  
 8 5/8" Set @ 348' KB  
 W/220 SX 3% CC 2%gel

DRILLING CONTR.: MURFIN RIG #7  
 SPUD: 11-14-15 COMP: 11-23-2015  
 MUD UP: 3100' TYPE MUD: CHEM.  
 DRILL TIME: 3400' to RTD  
 RTD: 4460' LTD: 4462'  
 SAMPLES SAVED: 3400'-RTD  
 GEOLOGIST: ROBERT J. PETERSEN

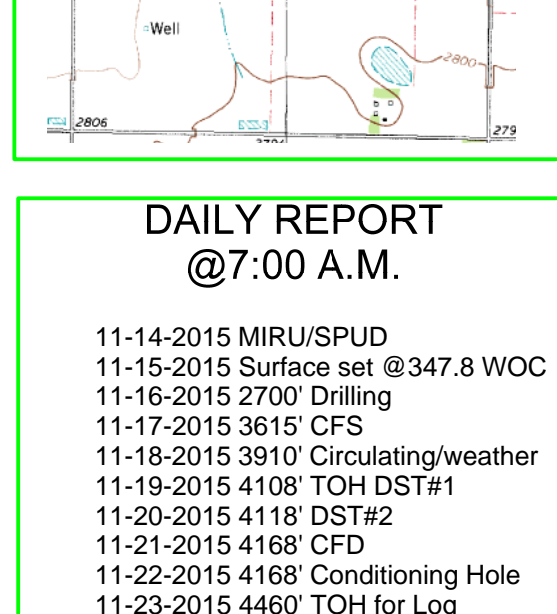
**PRODUCTION CASING**  
 None  
 Plugged and Abandoned

**WELL LOG SURVEYS**  
 DIL/DCP/Sonic/Micro

**ELECTRIC LOG TOPS**

FORMATION	DEPTH	DATUM	Well A	Well B
Stone Corral	2514	+302	-4	+60
Stotler	3581	-765	-7	+20
Topeka	3706	-890	-9	+25
Heebner	3911	-1095	-14	+29
Toronto	3937	-1121	-14	+30
Lansing	3952	-1136	-14	+28
Muncie Cr. Shale	4063	-1247	-9	+36
Stark	4127	-1311	-15	N/A
BKC	4178	-1362	-15	N/A
Pawnee	4285	-1469	-15	N/A
Fort Scott	4367	-1551	-17	N/A
Cherokee Shale	4386	-1570	-14	N/A
Miss*	4455	-1639	18	N/A

\*drill time top



**REFERENCE WELL:**  
 Well A  
 Murfin Drilling Co. Inc  
 Sealock #1-11  
 11-7-29W

Well B  
 Ted Gore  
 Richter#1  
 SW SW SW  
 6-8s-28W

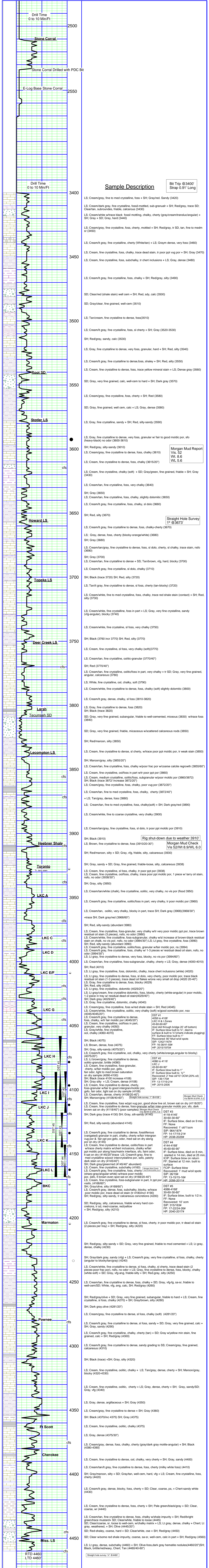
**DAILY REPORT @7:00 A.M.**

**REMARKS AND RECOMMENDATIONS**

The operator plugged and abandoned this test.

Respectfully submitted,  
*Robert J. Petersen*  
 Robert J. Petersen

11-14-2015 MIRU/SPUD  
 11-15-2015 Surface set @347.8 WOC  
 11-16-2015 2700' Drilling  
 11-17-2015 3615' CFS  
 11-18-2015 3910' Circulating/weather  
 11-19-2015 4108' TOH DST#1  
 11-20-2015 4118' DST#2  
 11-21-2015 4168' DFD  
 11-22-2015 4168' Conditioning Hole  
 11-23-2015 4460' TOH for Log





11-14-15 District Oak, KS Ticket No. 67504  
 Company Sueman Exploration Rig Murt 7  
 Lease Delke Well No. \_\_\_\_\_  
 County Sheldahl State KS  
 Location 18-7-28 Field \_\_\_\_\_

CEMENT DATA:

Spacer Type: \_\_\_\_\_  
 Amt. \_\_\_\_\_ Skys Yield \_\_\_\_\_ ft<sup>3</sup>/sk Density \_\_\_\_\_ PPG

LEAD: Pump Time \_\_\_\_\_ hrs. Type \_\_\_\_\_  
 Excess \_\_\_\_\_

Amt. \_\_\_\_\_ Skys Yield \_\_\_\_\_ ft<sup>3</sup>/sk Density \_\_\_\_\_ PPG

TAIL: Pump Time \_\_\_\_\_ hrs. Type Com 3/1CC  
 Excess \_\_\_\_\_

Amt. 270 Skys Yield 1.36 ft<sup>3</sup>/sk Density 15 PPG

WATER: Lead 6.2 gals/sk Tail \_\_\_\_\_ gals/sk Total \_\_\_\_\_ Bbls.

Pump Trucks Used 566/281  
 Bulk Equip. 891/287

CASING DATA: Conductor  PTA  Squeeze  Misc   
 Surface  Intermediate  Production  Liner   
 Size 8 5/8 Type New Weight 24# Collar \_\_\_\_\_

Casing Depths: Top KB Bottom 350'

Drill Pipe: Size \_\_\_\_\_ Weight \_\_\_\_\_ Collars \_\_\_\_\_  
 Open Hole: Size 12 1/4 T.D. 350' ft. P.B. to \_\_\_\_\_ ft.

CAPACITY FACTORS:

Casing: Bbls/Lin. ft. .0637 Lin. ft./Bbl. \_\_\_\_\_  
 Open Holes: Bbls/Lin. ft. \_\_\_\_\_ Lin. ft./Bbl. \_\_\_\_\_  
 Drill Pipe: Bbls/Lin. ft. \_\_\_\_\_ Lin. ft./Bbl. \_\_\_\_\_  
 Annulus: Bbls/Lin. ft. \_\_\_\_\_ Lin. ft./Bbl. \_\_\_\_\_

Perforations: From \_\_\_\_\_ ft. to \_\_\_\_\_ ft. Amt. \_\_\_\_\_

Float Equip: Manufacturer \_\_\_\_\_  
 Shoe: Type \_\_\_\_\_ Depth \_\_\_\_\_  
 Float: Type \_\_\_\_\_ Depth \_\_\_\_\_  
 Centralizers: Quantity \_\_\_\_\_ Plugs Top \_\_\_\_\_ Btm. \_\_\_\_\_  
 Stage Collars \_\_\_\_\_  
 Special Equip. \_\_\_\_\_  
 Disp. Fluid Type water Amt. 21 Bbls. Weight \_\_\_\_\_ PPG  
 Mud Type 40 vis Weight \_\_\_\_\_ PPG

COMPANY REPRESENTATIVE \_\_\_\_\_

CEMENTER Paul Beaver

TIME (AM/PM)	PRESSURES PSI		FLUID PUMPED DATA			REMARKS
	DRILL PIPE CASING	ANNULUS	TOTAL FLUID	Pumped Per Time Period	RATE Bbls Min.	
1:00			32 21	32 53		Hold Safety meeting Mix 220 skys @ 15# Displace w/ water
1:30						shot-in sledge cement did circ 5 bbl to pit
						Hold Safety meeting
						Thank You!