

GEOLOGIST'S REPORT
DRILLING TIME AND SAMPLE LOG

COMPANY **SHAKESPEARE OIL CO.**
 LEASE **BEAMS 1-8**
 FIELD **Wildcat**
 LOCATION **796 FNL, 1693 FEL**
 SEC **8 T15P 6S** R6E **38W**
 COUNTY **Sheridan** STATE **Kansas**

CONTRACTOR **Duke Drilling Rig #4**
 SPUD **11-10-15** COMP **11-21-15**
 RTD **5170'** LTD **5172'**
 MUD UP **3800'** TYPE MUD **Chemical**

SAMPLES SAVED FROM **4000'** to RTD
 DRILLING TIME KEPT FROM **4000'** to RTD
 SAMPLES EXAMINED FROM **4000'** to RTD
 GEOLOGICAL SUPERVISION FROM **4000'** to RTD
 GEOLOGIST ON WELL **Tim Priest**

CONTRACTOR **Duke Drilling Rig #4**
 SPUD **11-10-15** COMP **11-21-15**
 RTD **5170'** LTD **5172'**
 MUD UP **3800'** TYPE MUD **Chemical**

SAMPLES SAVED FROM **4000'** to RTD
 DRILLING TIME KEPT FROM **4000'** to RTD
 SAMPLES EXAMINED FROM **4000'** to RTD
 GEOLOGICAL SUPERVISION FROM **4000'** to RTD
 GEOLOGIST ON WELL **Tim Priest**

CONTRACTOR **Duke Drilling Rig #4**
 SPUD **11-10-15** COMP **11-21-15**
 RTD **5170'** LTD **5172'**
 MUD UP **3800'** TYPE MUD **Chemical**

SAMPLES SAVED FROM **4000'** to RTD
 DRILLING TIME KEPT FROM **4000'** to RTD
 SAMPLES EXAMINED FROM **4000'** to RTD
 GEOLOGICAL SUPERVISION FROM **4000'** to RTD
 GEOLOGIST ON WELL **Tim Priest**

CONTRACTOR **Duke Drilling Rig #4**
 SPUD **11-10-15** COMP **11-21-15**
 RTD **5170'** LTD **5172'**
 MUD UP **3800'** TYPE MUD **Chemical**

SAMPLES SAVED FROM **4000'** to RTD
 DRILLING TIME KEPT FROM **4000'** to RTD
 SAMPLES EXAMINED FROM **4000'** to RTD
 GEOLOGICAL SUPERVISION FROM **4000'** to RTD
 GEOLOGIST ON WELL **Tim Priest**

CONTRACTOR **Duke Drilling Rig #4**
 SPUD **11-10-15** COMP **11-21-15**
 RTD **5170'** LTD **5172'**
 MUD UP **3800'** TYPE MUD **Chemical**

SAMPLES SAVED FROM **4000'** to RTD
 DRILLING TIME KEPT FROM **4000'** to RTD
 SAMPLES EXAMINED FROM **4000'** to RTD
 GEOLOGICAL SUPERVISION FROM **4000'** to RTD
 GEOLOGIST ON WELL **Tim Priest**

CONTRACTOR **Duke Drilling Rig #4**
 SPUD **11-10-15** COMP **11-21-15**
 RTD **5170'** LTD **5172'**
 MUD UP **3800'** TYPE MUD **Chemical**

SAMPLES SAVED FROM **4000'** to RTD
 DRILLING TIME KEPT FROM **4000'** to RTD
 SAMPLES EXAMINED FROM **4000'** to RTD
 GEOLOGICAL SUPERVISION FROM **4000'** to RTD
 GEOLOGIST ON WELL **Tim Priest**

CONTRACTOR **Duke Drilling Rig #4**
 SPUD **11-10-15** COMP **11-21-15**
 RTD **5170'** LTD **5172'**
 MUD UP **3800'** TYPE MUD **Chemical**

SAMPLES SAVED FROM **4000'** to RTD
 DRILLING TIME KEPT FROM **4000'** to RTD
 SAMPLES EXAMINED FROM **4000'** to RTD
 GEOLOGICAL SUPERVISION FROM **4000'** to RTD
 GEOLOGIST ON WELL **Tim Priest**

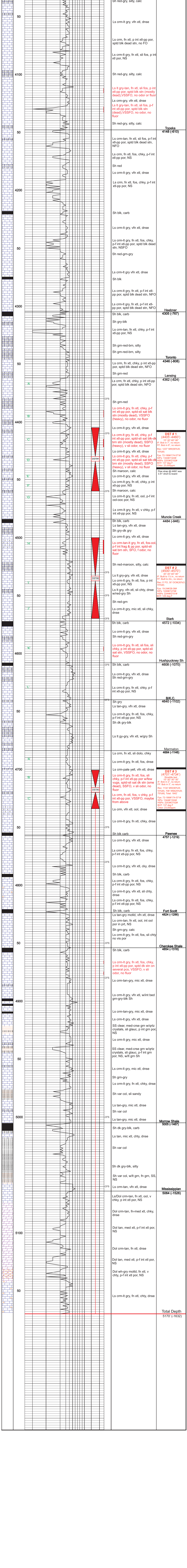
CONTRACTOR **Duke Drilling Rig #4**
 SPUD **11-10-15** COMP **11-21-15**
 RTD **5170'** LTD **5172'**
 MUD UP **3800'** TYPE MUD **Chemical**

SAMPLES SAVED FROM **4000'** to RTD
 DRILLING TIME KEPT FROM **4000'** to RTD
 SAMPLES EXAMINED FROM **4000'** to RTD
 GEOLOGICAL SUPERVISION FROM **4000'** to RTD
 GEOLOGIST ON WELL **Tim Priest**

CONTRACTOR **Duke Drilling Rig #4**
 SPUD **11-10-15** COMP **11-21-15**
 RTD **5170'** LTD **5172'**
 MUD UP **3800'** TYPE MUD **Chemical**

| | | |
|----------------|--------------|--------------|
| FORMATION TOPS | ELECTRIC LOG | SAMPLE |
| Anhydrite | 3192 (+346) | 3199 (+346) |
| Heebner Shale | 4304 (-766) | 4305 (-767) |
| Austin | 4362 (-824) | 4362 (-824) |
| Sark | 4572 (-1034) | 4572 (-1034) |
| BRC | 4641 (-1103) | 4640 (-1102) |
| Fort Scott | 4826 (-1288) | 4824 (-1286) |
| Cherokee Shale | 4827 (-1319) | 4824 (-1316) |
| Morrow Shale | 5008 (-1470) | 5005 (-1467) |
| Mississippian | 5068 (-1530) | 5064 (-1526) |

REMARKS Due to the results of DSTs and lack of shows, it was decided to plug and abandon the well.
 Respectfully Submitted,
 Tim Priest
 Petroleum Geologist
 API #15-181-20601-00-00



| | | |
|----------------|--------------|--------------|
| FORMATION TOPS | ELECTRIC LOG | SAMPLE |
| Anhydrite | 3192 (+346) | 3199 (+346) |
| Heebner Shale | 4304 (-766) | 4305 (-767) |
| Austin | 4362 (-824) | 4362 (-824) |
| Sark | 4572 (-1034) | 4572 (-1034) |
| BRC | 4641 (-1103) | 4640 (-1102) |
| Fort Scott | 4826 (-1288) | 4824 (-1286) |
| Cherokee Shale | 4827 (-1319) | 4824 (-1316) |
| Morrow Shale | 5008 (-1470) | 5005 (-1467) |
| Mississippian | 5068 (-1530) | 5064 (-1526) |

REMARKS Due to the results of DSTs and lack of shows, it was decided to plug and abandon the well.
 Respectfully Submitted,
 Tim Priest
 Petroleum Geologist
 API #15-181-20601-00-00