

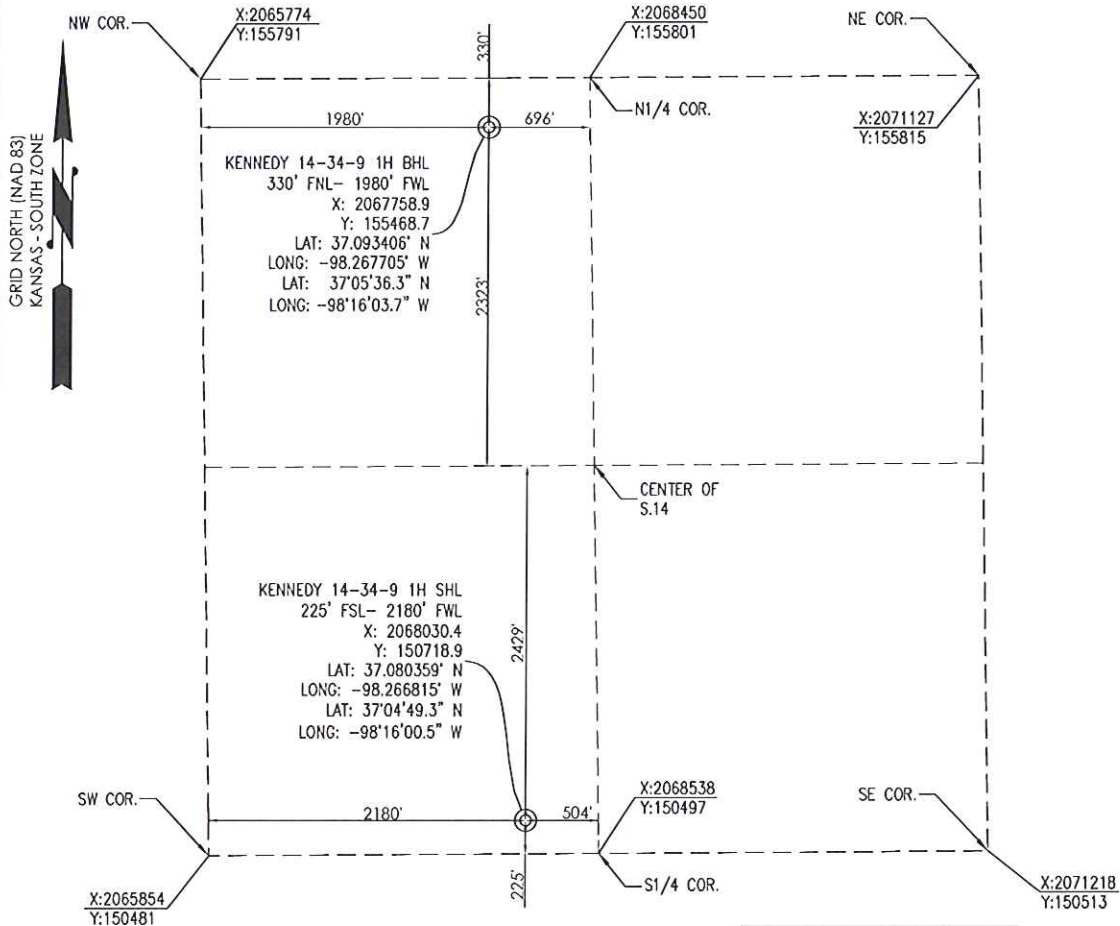


1000 LedgeLawn Drive
Conway, Arkansas 72034
501.328.3316 f 501.328.3325 f
www.craftontull.com

Crafton Tull
SURVEYING

HARPER COUNTY, KANSAS

225' FSL- 2180' FWL SECTION 14 TOWNSHIP 34S RANGE 09W 6TH P.M.



OPERATOR: TAPSTONE ENERGY

WELL NO: 1H

LEASE NAME: KENNEDY 14-34-9

TOPOGRAPHIC & VEGETATION: LOCATION FELL IN A FIELD

GOOD DRILL SITE: YES

REFERENCE STAKES OR ALTERNATE LOCATION
STAKES SET: NONE

BEST ACCESSIBILITY TO LOCATION: SOUTH OR WEST LINE

DISTANCE & DIRECTION
FROM HWY JCT OR TOWN: FROM THE JCT. OF STATE HWY 58 AND SW 50 ROAD, HEAD EAST
FOR ±1 MILE TO THE SW CORNER OF SECTION 14.

(THE FOLLOWING
INFORMATION WAS
GATHERED USING A GPS
RECEIVER ACCURACY ±2.3
METERS)

GPS
DATUM: NAD-27
LAT: 37.080359°
LONG: -98.266815°

STATE PLANE
COORDINATES:
ZONE: KS-SOUTH NAD-27
X: 2068030.4
Y: 150718.9

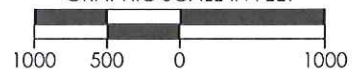
DATE STAKED: 11/16/15

GENERAL NOTES

THE TIES AND FOOTAGES SHOWN ON THIS PLAT ARE FROM LINES OF OCCUPATION FROM A SURVEY MADE ON THE GROUND AND / OR BEARING AND DISTANCES FROM THE GENERAL LAND OFFICE PLAT OF THE AREA SHOWN AND MAY NOT BE THE ACTUAL PROPERTY CORNERS. THIS PLAT DOES NOT REPRESENT A TRUE BOUNDARY SURVEY. DRILL SITE CONDITION DETERMINATIONS WERE MADE BY TAPSTONE ENERGY REPRESENTATIVES.



GRAPHIC SCALE IN FEET



REVISION	tapstone		
	"KENNEDY 14-34-9 1H" PART OF THE SW1/4 OF SECTION 14, T-34-S, R-09-W PROPOSED DRILL SITE HARPER COUNTY, KANSAS		
	SCALE: 1" = 1000'	DRAWN BY: B. BROWN	SHEET NO.: 1 OF 5
	PLOT DATE: 11-18-2015		