

DIAMOND TESTING GENERAL REPORT

Jake Fahrenbruch, Tester

Cell: (620) 282-8977 / Office: (800) 542-7313



TEST INFORMATION

Well Name	Younger #3
Company Name	Vess Oil Corporation
Formation	DST #5 KC "H&L" - Pleasanton Sand 3226'-3369'
Test Type	Bottom-Hole w/J&Jnt
Surface Location	Sec 7-10s-16w-Rooks County, Kansas
KB Elevation (SL)	1957.000
Gauge Name	5951
Start Test Date	2015/08/26
Start Test Time	08:30:00
Final Test Date	2015/08/26
Final Test Time	15:28:00
Job Number	F411
Contact	Dylan Klaus
Site Contact	Roger Martin

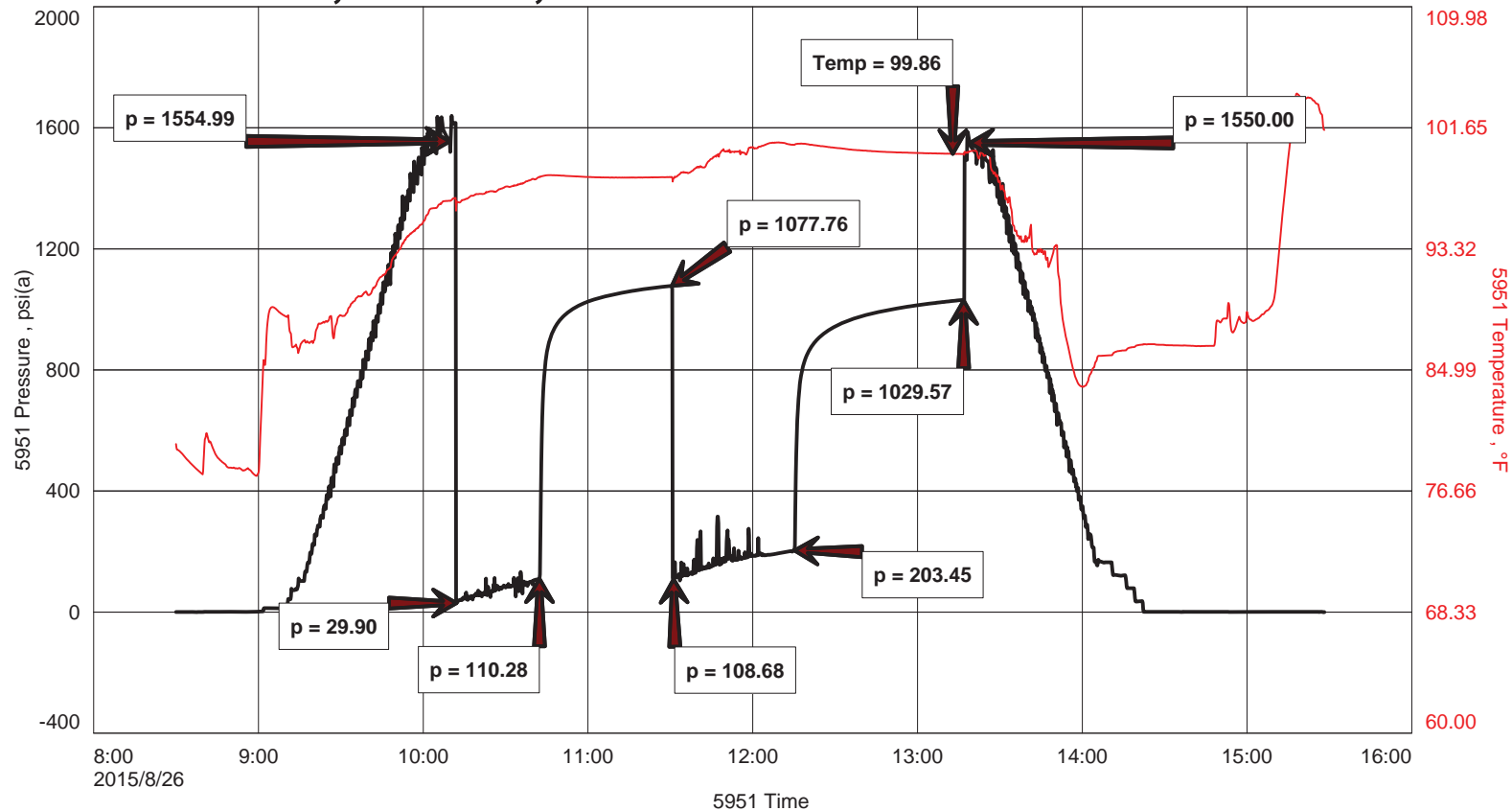
TEST RESULTS

Initial flow period, blow increased to BOB in 17 minutes. No blowback.
 Final flow period, blow increased to BOB in 23 minutes. No blowback.

TOTAL RECOVERED FLUID: 360'

- 210' Drilling Mud 100% mud
- 150' Watery Mud 40% wtr, 60% mud
- ~250' GIP
- Tool Sample: WM 40% wtr, 60% mud
- Chlorides: 48,000 PPM
- RW: .10 ohm @ 110 Deg F
- PH: 8.0

YOUNGER #3, DST #5, KC "H-L" - Pleasanton Sand 3226'-3369'





DIAMOND TESTING
 P.O. Box 157
 HOISINGTON, KANSAS 67544
 (800) 542-7313
DRILL-STEM TEST TICKET
 FILE: YOUNGER 37575

ON LOCATION:	<u>08:00</u>
START RECORDERS:	<u>08:30</u>
STOP RECORDERS:	<u>15:28</u>

Company VESS OIL CORP. Lease & Well No. YOUNGER #3
 Contractor DISCOVERY DRUG. REG #4 Charge to VESS OIL CORP
 Elevation 1957' KB Formation KCHH' - PLAS. SNO. Effective Pay _____ Ft. Ticket No. F411
 Date 8-26-15 Sec. 7 Twp. 10S Range 16W County ROOKS State KANSAS
 Test Approved By ROGER MARTIN Diamond Representative JAKE FAHRENBRUCH

Formation Test No. 5 Interval Tested from 3226 ft. to 3369 ft. Total Depth 3369 ft.
 Packer Depth 3221 ft. Size 6 3/4 in. Packer depth _____ ft. Size 6 3/4 in.
 Packer Depth 3226 ft. Size 6 3/4 in. Packer depth _____ ft. Size 6 3/4 in.
 Depth of Selective Zone Set _____

Top Recorder Depth (Inside) 3231 ft. Recorder Number 5957 Cap. 5000 P.S.I.
 Bottom Recorder Depth (Outside) 3231 ft. Recorder Number 5584 Cap. 5000 P.S.I.
 Below Straddle Recorder Depth _____ ft. Recorder Number _____ Cap. _____ P.S.I.

Mud Type CHEMICAL Viscosity 53 (2" LCM) Drill Collar Length 30 ft. I.D. 2 1/4 in.
 Weight 9.0 Water Loss 7.3 cc. Weight Pipe Length _____ ft. I.D. 2 7/8 in.
 Chlorides 5400 P.P.M. Drill Pipe Length 3168 ft. I.D. 3 1/2 in.
 Jars: Make STERLING Serial Number #5 J&JNT Test Tool Length 28 ft. Tool Size 3 1/2-IF in.
 Did Well Flow? _____ Reversed Out _____ Anchor Length 143 ft. Size 4 1/2-FH in.
 Main Hole Size 7 7/8 Tool Joint Size 4 1/2" XH in. Surface Choke Size _____ in. Bottom Choke Size 5/8 in.

Blow: 1st Open: BLOW INCREASED TO BOB IN 17 MINUTES. NO BLOWBACK
 2nd Open: BLOW INCREASED TO BOB IN 23 MINUTES. NO BLOWBACK.

Recovered 210 ft. of DRUG MUD 100" MUD
 Recovered 150 ft. of WM 40" WTR, 60" MUD
 Recovered _____ ft. of TOTAL RECOVERED FLUID: 360'
 Recovered _____ ft. of ~250' GIP
 Recovered _____ ft. of TOOL SAMPLE: WM 40" WTR, 60" MUD
 Recovered _____ ft. of CHLORIDES: 48,000 PPM
 Remarks: RW: .10 Ω @ 110°F
PH: 8.0

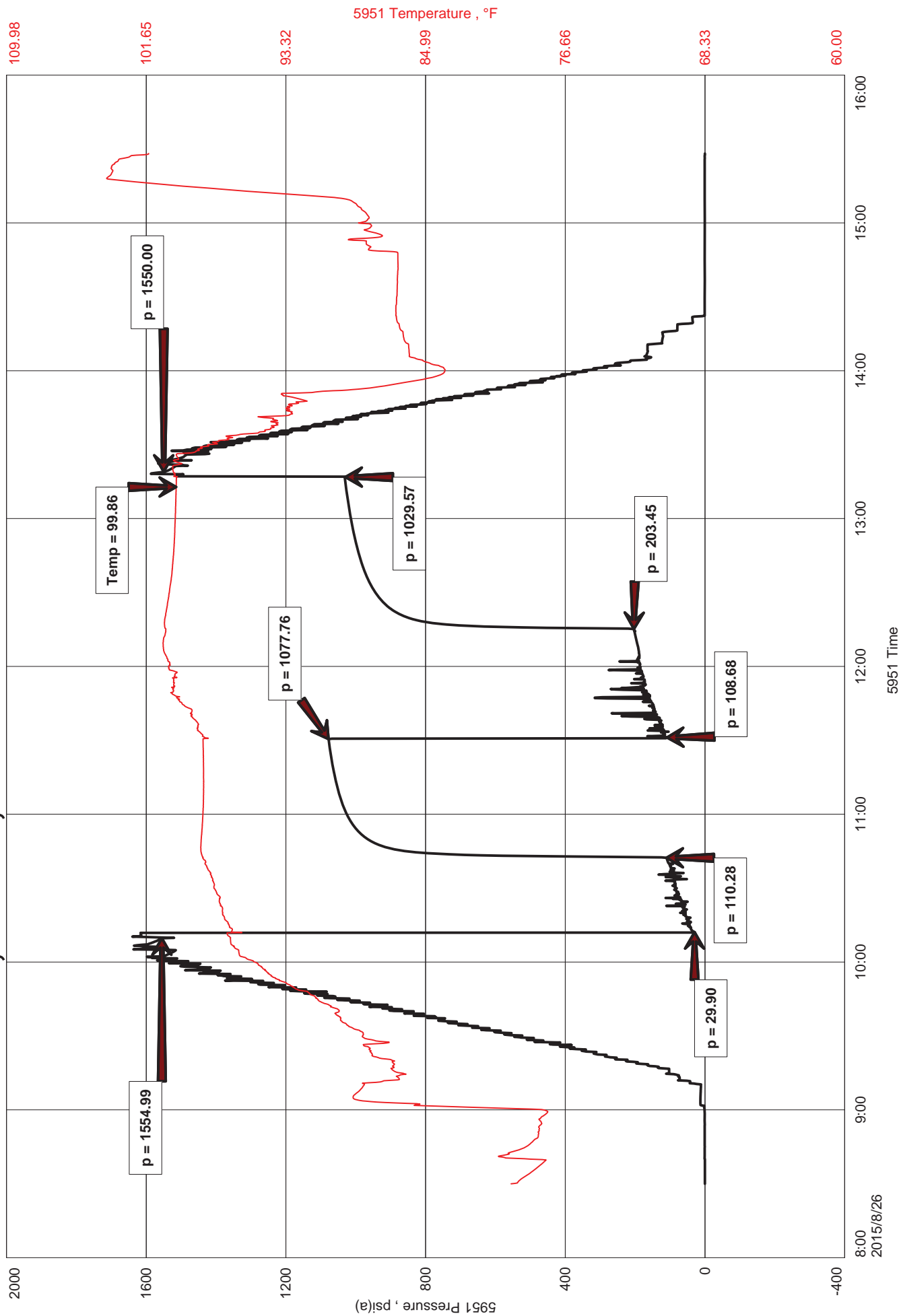
Price Job	
Other Charges	
	<u>J&JNT</u>
	<u>30 MRT(PV)</u>
Total	

Time Set Packer(s) 10:12 A.M. P.M. Time Started Off Bottom 13:12 A.M. P.M. Maximum Temperature 100°F

Initial Hydrostatic Pressure..... (A) 1555 P.S.I.
 Initial Flow Period..... Minutes 30 (B) 30 P.S.I. to (C) 110 P.S.I.
 Initial Closed In Period..... Minutes 45 (D) 1078 P.S.I.
 Final Flow Period..... Minutes 45 (E) 109 P.S.I. to (F) 203 P.S.I.
 Final Closed In Period..... Minutes 60 (G) 1030 P.S.I. Thank you!
 Final Hydrostatic Pressure..... (H) 1550 P.S.I. Jake Fahrenbruch

Diamond Testing shall not be liable for damages of any kind to the property or personnel of the one for whom a test is made or for any loss suffered or sustained, directly or indirectly, through the use of its equipment, or its statement or opinion concerning the result of any test. Tools lost or damaged in the hole shall be paid for at cost by the party for whom the test is made.

YOUNGER #3, DST #5, KC "H-L" - Pleasanton Sand 3226'-3369'





DIAMOND TESTING
 P.O. Box 157
 HOISINGTON, KANSAS 67544
 (800) 542-7313
DRILL-STEM TEST TICKET
 FILE: YOUNGER3DST5

TIME ON: 08:30
 TIME OFF: 15:28

Company Vess Oil Corp. Lease & Well No. Younger #3
 Contractor Discovery Drilling Rig #4 Charge to Vess Oil Corp.
 Elevation 1957' KB Formation KC "H&L" - Pleas. Effective Pay _____ Ft. Ticket No. F411
 Date 8-26-15 Sec. 7 Twp. _____ 10s S Range _____ 16w W County Rooks State KANSAS
 Test Approved By Roger Martin Diamond Representative Jake Fahrenbruch

Formation Test No. 5 Interval Tested from 3226 ft. to 3369 ft. Total Depth 3369 ft.
 Packer Depth 3221 ft. Size 6 3/4 in. Packer depth _____ ft. Size 6 3/4 in.
 Packer Depth 3226 ft. Size 6 3/4 in. Packer depth _____ ft. Size 6 3/4 in.
 Depth of Selective Zone Set _____

Top Recorder Depth (Inside) 3231 ft. Recorder Number 5951 Cap. 5000 P.S.I.
 Bottom Recorder Depth (Outside) 3231 ft. Recorder Number 5584 Cap. 5000 P.S.I.
 Below Straddle Recorder Depth _____ ft. Recorder Number _____ Cap. _____ P.S.I.

Mud Type CHEMICAL Viscosity 53 (# LCM) Drill Collar Length 30 ft. I.D. 2 1/4 in.
 Weight 9.0 Water Loss 7.2 cc. Weight Pipe Length 0 ft. I.D. 2 7/8 in.
 Chlorides 5,400 P.P.M. Drill Pipe Length 3,168 ft. I.D. 3 1/2 in.
 Jars: Make STERLING Serial Number #5 J,J Test Tool Length 28 ft. Tool Size 3 1/2-IF in.
 Did Well Flow? NO Reversed Out NO Anchor Length 143 ft. Size 4 1/2-FH in.
 Main Hole Size 7 7/8 Tool Joint Size 4 1/2 XH in. ^{16' PERF IN ANCHOR} Surface Choke Size 1 in. Bottom Choke Size 5/8 in.

Blow: 1st Open: Blow increased to BOB in 17 minutes. No blowback.
 2nd Open: Blow increased to BOB in 23 minutes. No blowback.

Recovered 210 ft. of Drilling Mud 100% mud
 Recovered 150 ft. of Watery Mud 40% wtr, 60% mud
 Recovered _____ ft. of ~250' GIP
 Recovered _____ ft. of TOTAL RECOVERED FLUID: 360'
 Recovered _____ ft. of Tool Sample: WM 40% wtr, 60% mud
 Recovered _____ ft. of Chlorides: 48,000 PPM

Remarks: _____
RW: .10 ohm @ 110 Deg F
PH: 8.0

Time Set Packer(s) 10:12 A.M. P.M. Time Started Off Bottom 13:12 A.M. P.M. Maximum Temperature 100 F

Initial Hydrostatic Pressure..... (A) 1555 P.S.I.
 Initial Flow Period..... Minutes 30 (B) 30 P.S.I. to (C) 110 P.S.I.
 Initial Closed In Period..... Minutes 45 (D) 1078 P.S.I.
 Final Flow Period..... Minutes 45 (E) 109 P.S.I. to (F) 203 P.S.I.
 Final Closed In Period..... Minutes 60 (G) 1030 P.S.I.
 Final Hydrostatic Pressure..... (H) 1550 P.S.I.

Diamond Testing shall not be liable for damages of any kind to the property or personnel of the one for whom a test is made or for any loss suffered or sustained, directly or indirectly, through the use of its equipment, or its statement or opinion concerning the result of any test. Tools lost or damaged in the hole shall be paid for at cost by the party for whom the test is made.