



**TRILOBITE TESTING, INC**

# DRILL STEM TEST REPORT

Arcadian Resources LLC

**27-17-31 Scott, Ks**

208 E. 32nd  
Hays, Ks 67601

**Bateman #1**

Job Ticket: 61785

**DST#: 3**

ATTN: Eli Felts- Garett Din

Test Start: 2015.11.03 @ 03:13:57

## GENERAL INFORMATION:

Formation: **Johnson Zone**

Deviated: No Whipstock: ft (KB)

Time Tool Opened: 04:56:27

Time Test Ended: 11:19:57

Test Type: Conventional Bottom Hole (Reset)

Tester: Brandon Turley

Unit No: 79

**Interval: 4501.00 ft (KB) To 4550.00 ft (KB) (TVD)**

Reference Elevations: 2915.00 ft (KB)

Total Depth: 4550.00 ft (KB) (TVD)

2905.00 ft (CF)

Hole Diameter: 7.88 inches Hole Condition: Good

KB to GR/CF: 10.00 ft

**Serial #: 8166 Outside**

Press@RunDepth: 584.26 psig @ 4502.00 ft (KB)

Capacity: 8000.00 psig

Start Date: 2015.11.03

End Date:

2015.11.03

Last Calib.:

2015.11.03

Start Time: 03:14:02

End Time:

11:19:56

Time On Btm:

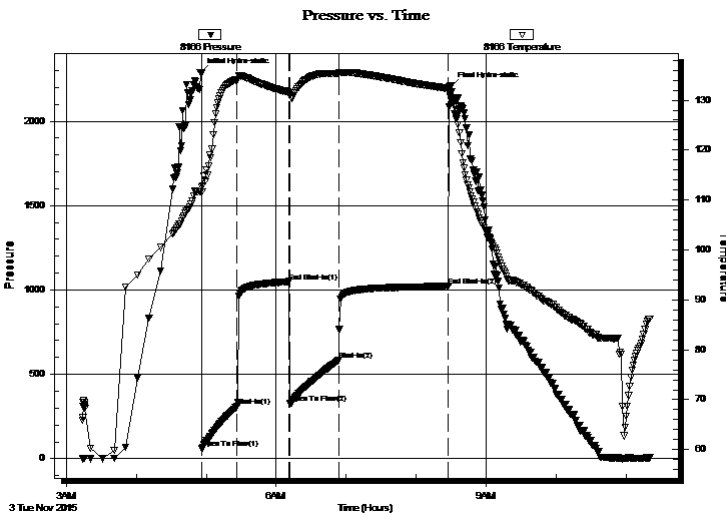
2015.11.03 @ 04:54:57

Time Off Btm:

2015.11.03 @ 08:29:27

**TEST COMMENT:** IF: BOB in 3 1/2 min.  
IS: Surface blow built to 3.  
FF: BOB in 4 min.  
FS: Surface blow built to 1/2.

## PRESSURE SUMMARY



Time (Min.)	Pressure (psig)	Temp (deg F)	Annotation
0	2289.22	111.64	Initial Hydro-static
2	58.45	111.64	Open To Flow (1)
32	311.83	134.11	Shut-In(1)
76	1049.31	131.55	End Shut-In(1)
77	330.16	131.14	Open To Flow (2)
119	584.26	135.38	Shut-In(2)
213	1021.68	132.35	End Shut-In(2)
215	2207.89	130.50	Final Hydro-static

## Recovery

Length (ft)	Description	Volume (bbl)
248.00	gocm 40%g 10%o 50%m	3.48
620.00	mcgo 40%g 55%o 5%m	8.70
651.00	go 40%g 60%o	9.13
0.00	279 GIP	0.00

## Gas Rates

	Choke (inches)	Pressure (psig)	Gas Rate (Mcf/d)

\* Recovery from multiple tests



**TRILOBITE  
TESTING, INC**

# DRILL STEM TEST REPORT

**FLUID SUMMARY**

Arcadian Resources LLC

**27-17-31 Scott, Ks**

208 E. 32nd  
Hays, Ks 67601

**Bateman #1**

Job Ticket: 61785

**DST#: 3**

ATTN: Eli Felts- Garett Din

Test Start: 2015.11.03 @ 03:13:57

## Mud and Cushion Information

Mud Type: Gel Chem

Cushion Type:

Oil API:

29 deg API

Mud Weight: 9.00 lb/gal

Cushion Length:

ft

Water Salinity:

0 ppm

Viscosity: 50.00 sec/qt

Cushion Volume:

bbbl

Water Loss: 8.79 in<sup>3</sup>

Gas Cushion Type:

Resistivity: 0.00 ohm.m

Gas Cushion Pressure:

psig

Salinity: 2000.00 ppm

Filter Cake: 1.00 inches

## Recovery Information

Recovery Table

Length ft	Description	Volume bbbl
248.00	gocm 40%g 10%o 50%m	3.479
620.00	mcgo 40%g 55%o 5%m	8.697
651.00	go 40%g 60%o	9.132
0.00	279 GIP	0.000

Total Length: 1519.00 ft

Total Volume: 21.308 bbl

Num Fluid Samples: 0

Num Gas Bombs: 0

Serial #:

Laboratory Name:

Laboratory Location:

Recovery Comments: 31@80=29

### Pressure vs. Time

