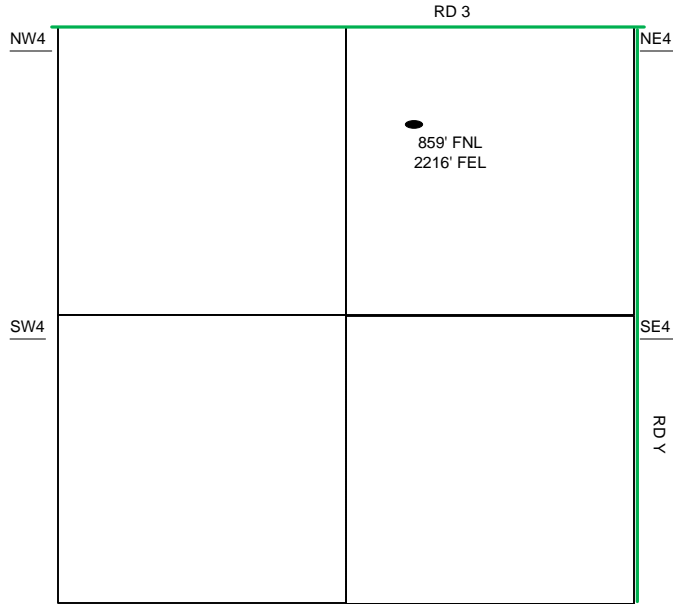
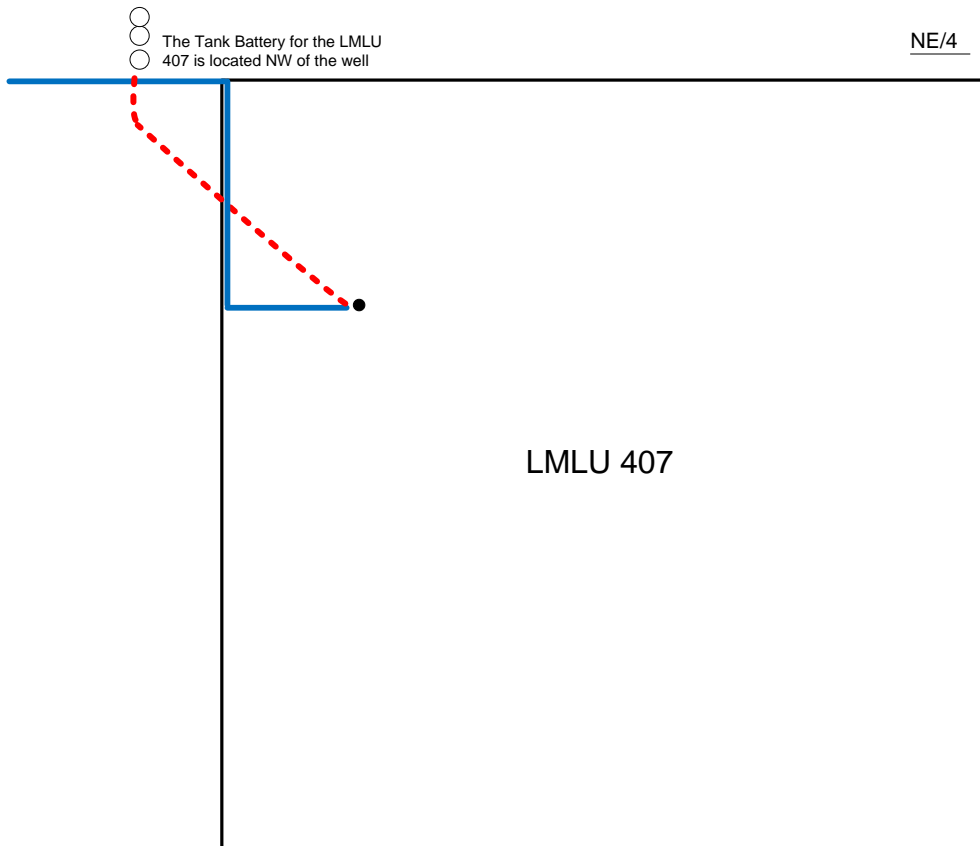


Proposed Plan of Construction  
LMLU 407  
Sec 13 T27S-R35W  
Grant County, KS



Sec 13 - T27S - R35W



Proposed Details of  
N/E/4 Sec 13 - T27S - R35W

Proposed Site Diagram  
LMLU 407  
December 3, 2015

Note-Drawing **Not** to Scale