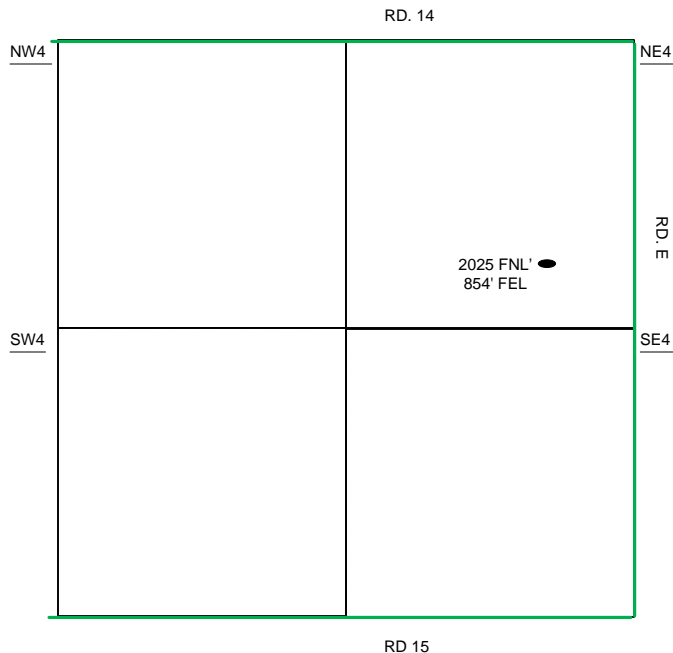
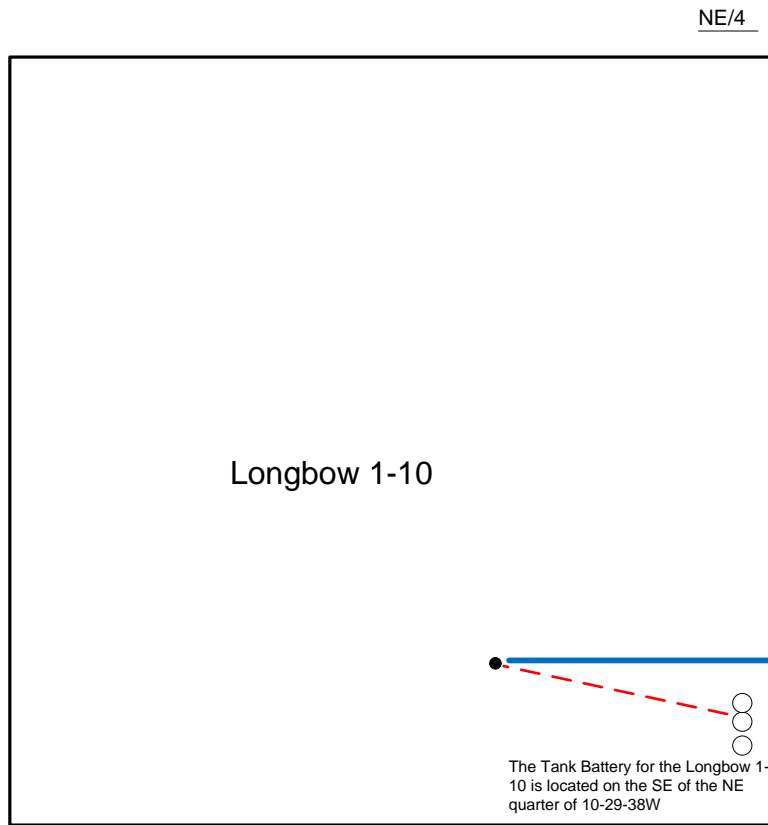


Proposed Plan of Construction

Longbow 1-10
Sec 10 T29S-R38W
Grant County, KS



Sec 10 – T29S – R38W



Proposed Details of
NE/4 Sec 10 – T29S – R38W

Proposed Site Diagram
Longbow 1-10
December 8, 2015

Note-Drawing **Not** to Scale