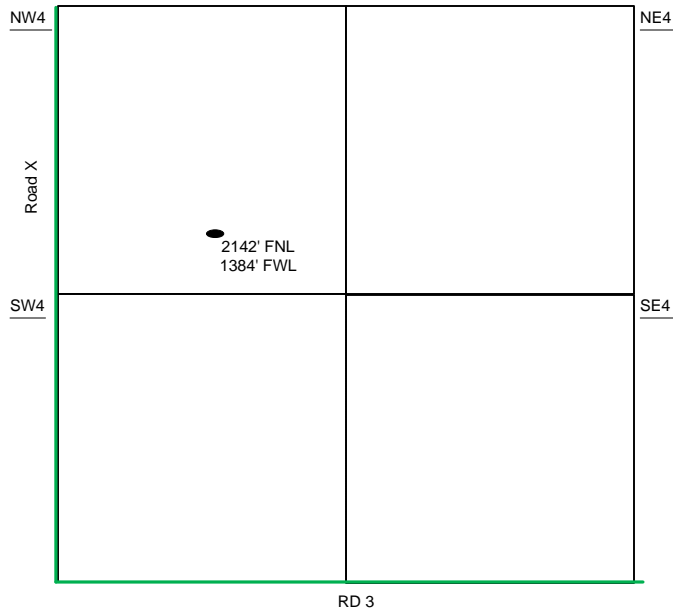
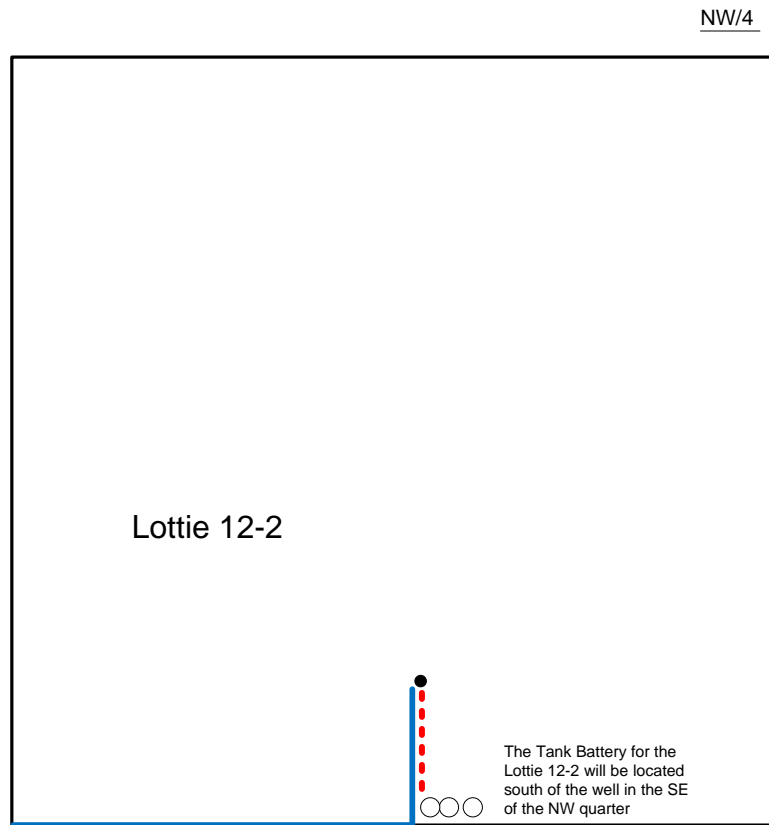


Proposed Plan of Construction

Lottie 12-2  
Sec 12 T27S-R35W  
Grant County, KS



Sec 12 - T27S - R35W



Proposed Details of  
NW/4 Sec 12 - T27S - R35W

Note-Drawing **Not** to Scale

Proposed Site Diagram  
Lottie 12-2  
December 12, 2015