

GEOLOGIST'S REPORT

DRILLING TIME AND SAMPLE LOG

SUEMAUR EXPLORATION & PROD., LLC

WELL: OELKE #1
 LOC.: 692' FNL & 1503' FEL
 NE SE NW NE
 SEC. 18-7-28W
 SHERIDAN COUNTY, KANSAS
 API: 15-179-21412-00-00

ELEVATION
 KB: 2816
 GL: 2811
 LOG MEASURED
 FROM: KB

SURFACE CASING
 8 5/8" Set @ 348' KB
 W/220 SX 3% CC 2%gel

DRILLING CONTR.: MURFIN RIG #7
 SPUD: 11-14-15 COMP: 11-23-2015
 MUD UP: 3100' TYPE MUD: CHEM.
 DRILL TIME: 3400' to RTD
 RTD: 4460' LTD: 4462'
 SAMPLES SAVED: 3400'-RTD
 GEOLOGIST: ROBERT J. PETERSEN

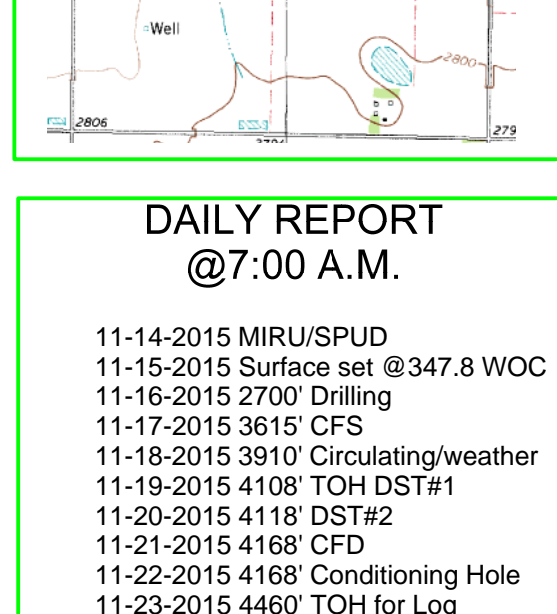
PRODUCTION CASING
 None
 Plugged and Abandoned

WELL LOG SURVEYS
 DIL/DCP/Sonic/Micro

ELECTRIC LOG TOPS

FORMATION	DEPTH	DATUM	Well A	Well B
Stone Corral	2514	+302	-4	+60
Stotler	3581	-765	-7	+20
Topeka	3706	-890	-9	+25
Heebner	3911	-1095	-14	+29
Toronto	3937	-1121	-14	+30
Lansing	3952	-1136	-14	+28
Muncie Cr. Shale	4063	-1247	-9	+36
Stark	4127	-1311	-15	N/A
BKC	4178	-1362	-15	N/A
Pawnee	4285	-1469	-15	N/A
Fort Scott	4367	-1551	-17	N/A
Cherokee Shale	4386	-1570	-14	N/A
Miss*	4455	-1639	18	N/A

*drill time top



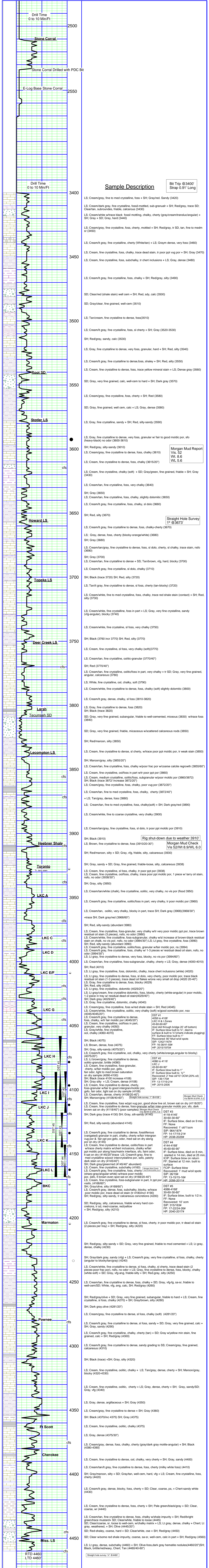
REFERENCE WELL:
 Well A
 Murfin Drilling Co. Inc
 Sealock #1-11
 11-7-29W

Well B
 Ted Gore
 Richter#1
 SW SW SW
 6-8s-28W

DAILY REPORT @7:00 A.M.
 11-14-2015 MIRU/SPUD
 11-15-2015 Surface set @347.8 WOC
 11-16-2015 2700' Drilling
 11-17-2015 3615' CFS
 11-18-2015 3910' Circulating/weather
 11-19-2015 4108' TOH DST#1
 11-20-2015 4118' DST#2
 11-21-2015 4168' FFD
 11-22-2015 4168' Conditioning Hole
 11-23-2015 4460' TOH for Log

REMARKS AND RECOMMENDATIONS
 The operator plugged and abandoned this test.
 Respectfully submitted,
Robert J. Petersen
 Robert J. Petersen

Sample Description
 Bit Trip @3400'
 Strap 0.91' Long



Morgan Mud Report
 Vis. 52
 Wt. 8.6
 WL 5.6

Straight Hole Survey
 1° @3673'

Rig shut-down due to weather 3910'
Morgan Mud Check
 Vis 52/Wt 8.9/WL 6.0

DST #1
 4058 to 4108
 LKC H & Zones
 45-60-60-60"
 IF: Surface blow built to 20' off bottom
 FF: Surface blow built to 14"
 Recovered: 80' Mud w/oil spots
 SIP: 1242/1167#
 FP: 16-38/41-59#
 HP: 2015/1970#

DST #2
 4118'
 LKC J
 45-60-60-60"
 IF: Surface blow built to 14"
 Recovered: 2' free oil/10' OCM (20% oil)
 SIP: 26/19#
 FP: 13-17/19-21#
 HP: 2015/2005

DST #3
 4118-4143
 30-60-30-60"
 FF: None
 Recovered: 1' oil/1' ocm
 SIP: 964/187#
 FP: 14-17/19-21#
 HP: 2038-2029#

DST #4
 4144-4168'
 30-60-30-60"
 IF: Surface blow, died on 9 min.
 Recovered: 1' oil/1' ocm
 SIP: 964/187#
 FP: 14-17/19-21#
 HP: 2038-2029#

DST #5
 4086-4168'
 30-60-30-60"
 IF: Surface blow, built to 1/2 in.
 Recovered: 10' ocm
 SIP: 315/163#
 FP: 17-22/24-26#
 HP: 2040-2017#

DST #6
 4168-60"
 30-60-30-60"
 IF: Surface blow, built to 1/2 in.
 Recovered: 10' ocm
 SIP: 315/163#
 FP: 17-22/24-26#
 HP: 2040-2017#

DST #7
 4168-60"
 30-60-30-60"
 IF: Surface blow, built to 1/2 in.
 Recovered: 10' ocm
 SIP: 315/163#
 FP: 17-22/24-26#
 HP: 2040-2017#