

TRILOBITE TESTING, INC

DRILL STEM TEST REPORT

Marexco, Inc.
 PO Box 21598
 Oklahoma City, OK 73115
 ATTN: Larry Nicholson

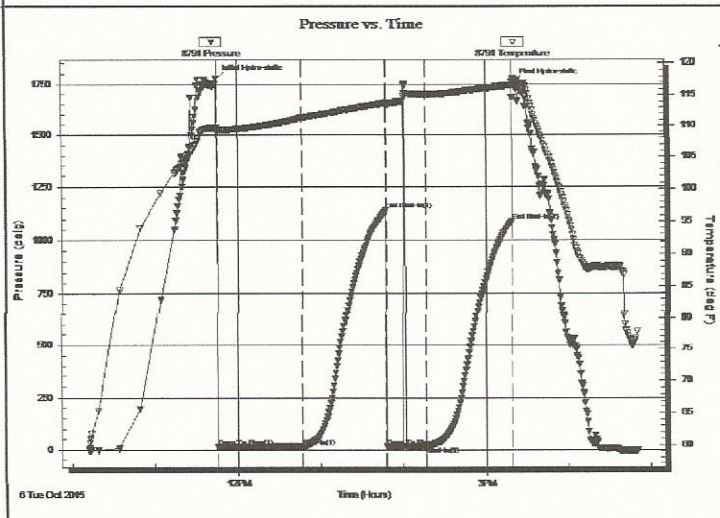
2/3s/29w Decatur KS
Overmiller #34-2
 Job Ticket: 65226 **DST#: 2**
 Test Start: 2015.10.06 @ 10:12:00

GENERAL INFORMATION:

Formation: **Lans. "B - C"**
 Deviated: No Whipstock: ft (KB)
 Time Tool Opened: 11:45:45
 Time Test Ended: 16:50:15
 Test Type: Conventional Bottom Hole (Reset)
 Tester: James Winder
 Unit No: 83
 Interval: **3625.00 ft (KB) To 3660.00 ft (KB) (TVD)**
 Total Depth: 3660.00 ft (KB) (TVD)
 Reference Elevations: 2600.00 ft (KB)
 2595.00 ft (CF)
 Hole Diameter: 7.88 inches Hole Condition: Fair
 KB to GR/CF: 5.00 ft

Serial #: 8791 Inside
 Press@RunDepth: 19.96 psig @ 3626.00 ft (KB) Capacity: 8000.00 psig
 Start Date: 2015.10.06 End Date: 2015.10.06 Last Calib.: 2015.10.06
 Start Time: 10:12:05 End Time: 16:50:14 Time On Btm: 2015.10.06 @ 11:45:15
 Time Off Btm: 2015.10.06 @ 15:20:30

TEST COMMENT: 60 - IF: Blow built slowly to 1/4"
 60 - IS: No blow back
 30 - FF: Weak surface blow, flushed tool, surface blow, built slightly
 60 - FS: No Blow back

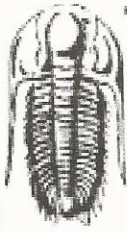


PRESSURE SUMMARY			
Time (Min.)	Pressure (psig)	Temp (deg F)	Annotation
0	1775.63	109.73	Initial Hydro-static
1	13.88	109.00	Open To Flow (1)
62	17.42	111.31	Shut-In(1)
123	1138.08	113.75	End Shut-In(1)
123	17.90	113.36	Open To Flow(2)
152	19.96	115.12	Shut-In(2)
214	1089.51	116.62	End Shut-In(2)
216	1755.70	117.52	Final Hydro-static

Recovery		
Length (ft)	Description	Volume (bbl)
8.00	SOCM 97% m, 3% o	0.11

* Recovery from multiple tests

Gas Rates			
	Choke (inches)	Pressure (psig)	Gas Rate (Mcf/d)



**TRILOBITE
TESTING, INC.**

DRILL STEM TEST REPORT

Marexco, Inc.
PO Box 21598
Oklahoma City, OK 73115
ATTN: Larry Nicholson

2/3s/29w Decatur KS
Overmiller #34-2
Job Ticket: 65226 **DST#: 2**
Test Start: 2015.10.06 @ 10:12:00

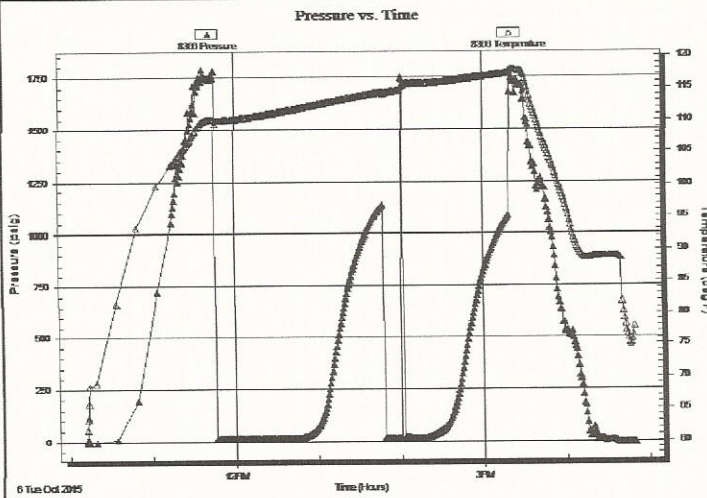
GENERAL INFORMATION:

Formation: **Lans. "B - C"**
Deviated: No Whipstock: ft (KB) Test Type: Conventional Bottom Hole (Reset)
Time Tool Opened: 11:45:45 Tester: James Winder
Time Test Ended: 16:50:15 Unit No: 83

Interval: **3625.00 ft (KB) To 3660.00 ft (KB) (TVD)** Reference Elevations: 2600.00 ft (KB)
Total Depth: 3660.00 ft (KB) (TVD) 2595.00 ft (CF)
Hole Diameter: 7.88 inchesHole Condition: Fair KB to GR/CF: 5.00 ft

Serial #: 8366 Outside
Press@RunDepth: psig @ 3626.00 ft (KB) Capacity: 8000.00 psig
Start Date: 2015.10.06 End Date: 2015.10.06 Last Calib.: 2015.10.06
Start Time: 10:12:05 End Time: 16:49:44 Time On Btm: Time Off Btm:

TEST COMMENT: 60 - IF: Blow built slowly to 1/4"
60 - IS: No blow back
30 - FF: Weak surface blow , flushed tool, surface blow , built slightly
60 - FS: No Blow back

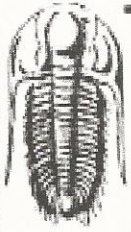


PRESSURE SUMMARY			
Time (Min.)	Pressure (psig)	Temp (deg F)	Annotation

Recovery		
Length (ft)	Description	Volume (bbl)
8.00	SOCM 97% m, 3% o	0.11

Gas Rates			
	Choke (inches)	Pressure (psig)	Gas Rate (Mcf/d)

* Recovery from multiple tests



**TRILOBITE
TESTING, INC.**

DRILL STEM TEST REPORT

FLUID SUMMARY

Marexco, Inc.
PO Box 21598
Oklahoma City, OK 73115
ATTN: Larry Nicholson

2/3s/29w Decatur KS
Overmiller #34-2
Job Ticket: 65226 DST#: 2
Test Start: 2015.10.06 @ 10:12:00

Mud and Cushion Information

Mud Type: Gel Chem	Cushion Type:	Oil API:	deg API
Mud Weight: 9.00 lb/gal	Cushion Length: ft	Water Salinity:	ppm
Viscosity: 58.00 sec/qt	Cushion Volume: bbl		
Water Loss: 7.99 in ³	Gas Cushion Type:		
Resistivity: ohm.m	Gas Cushion Pressure: psig		
Salinity: 2000.00 ppm			
Filter Cake: 1.00 inches			

Recovery Information

Recovery Table

Length ft	Description	Volume bbl
8.00	SOCM97%m, 3%o	0.112

Total Length: 8.00 ft Total Volume: 0.112 bbl
 Num Fluid Samples: 0 Num Gas Bombs: 0 Serial #:
 Laboratory Name: Laboratory Location:
 Recovery Comments:

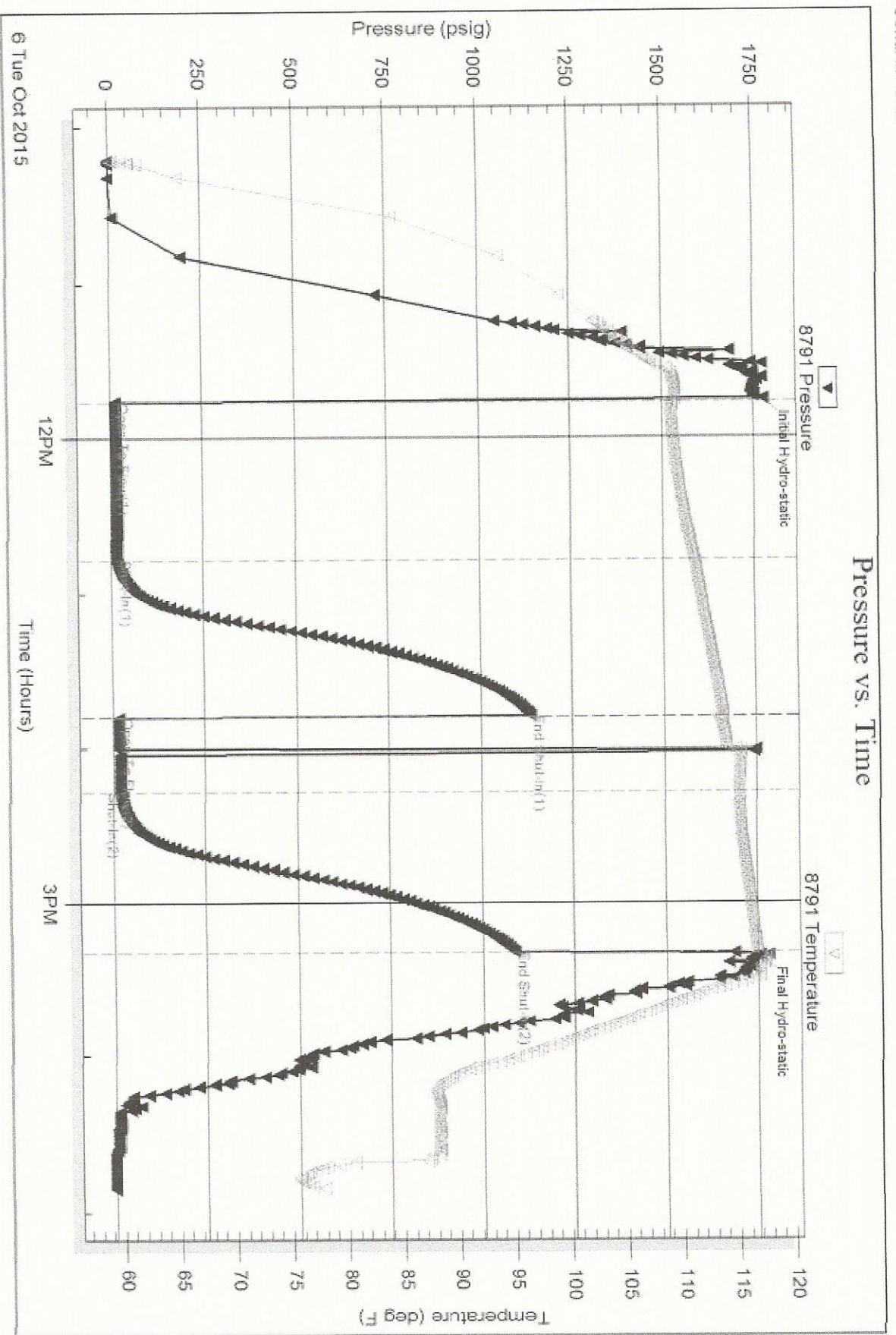
Serial # 8791

Inside

Marxco, Inc.

Overmiller #34.2

DST Test Number 2



Serial #: 8366

Outside Marexco, Inc.

Overmiller #34-2

DST Test Number: 2

