



**DIAMOND TESTING**  
P.O. Box 157  
**HOISINGTON, KANSAS 67544**  
(800) 542-7313  
**DRILL-STEM TEST TICKET**  
FILE: K & G 2-29 Dst 2

TIME ON: 06:27  
TIME OFF: 16:47

Company Raydon Exploration Inc Lease & Well No. K & G 2-29  
Contractor Quest Drilling Charge to Raydon Exploration Inc  
Elevation 2922 Sur Formation Kansas City "B" Effective Pay \_\_\_\_\_ Ft. Ticket No. RR209  
Date Nov-20-2015 Sec. 29 Twp. 27 S Range 32 W County Haskell State KANSAS  
Test Approved By Ed Grieves Diamond Representative Ricky Ray

Formation Test No. 2 Interval Tested from 4648 ft. to 4660 ft. Total Depth 4660 ft.  
Packer Depth 4643 ft. Size 6 3/4 in. Packer depth \_\_\_\_\_ ft. Size 6 3/4 in.  
Packer Depth 4648 ft. Size 6 3/4 in. Packer depth \_\_\_\_\_ ft. Size 6 3/4 in.

Depth of Selective Zone Set

Top Recorder Depth (Inside) 4643 ft. Recorder Number 0062 Cap. 5000 P.S.I.  
Bottom Recorder Depth (Outside) 4652 ft. Recorder Number 5954 Cap. 5000 P.S.I.  
Below Straddle Recorder Depth \_\_\_\_\_ ft. Recorder Number \_\_\_\_\_ Cap. \_\_\_\_\_ P.S.I.

Mud Type Chem Viscosity 45 Drill Collar Length 179 ft. I.D. 2 1/4 in.  
Weight 9 Water Loss 7 cc. Weight Pipe Length \_\_\_\_\_ ft. I.D. 2 7/8 in.  
Chlorides 3400 P.P.M. Drill Pipe Length 4438 ft. I.D. 3 1/2 in.  
Jars: Make STERLING Serial Number na Test Tool Length 32 ft. Tool Size 3 1/2-IF in.  
Did Well Flow? NA Reversed Out NA Anchor Length 12P ft. Size 4 1/2-FH in.  
Main Hole Size 7 7/8 Tool Joint Size 4 1/2 xh in. Surface Choke Size 1 in. Bottom Choke Size 5/8 in.

Blow: 1st Open: WSB (Built to 6" in 30 min) NOBB  
2nd Open: NO Blow (Built to 5 1/2" in 60 mins) NOBB

Recovered 111 ft. of MW 85% W 15% M  
Recovered 179 ft. of MW 80% W 20% M  
Recovered 290 ft. of Total Fluid

Recovered \_\_\_\_\_ ft. of \_\_\_\_\_ PH: 7  
Recovered \_\_\_\_\_ ft. of \_\_\_\_\_ Chlorides: 100,000 PPM Price Job  
Recovered \_\_\_\_\_ ft. of \_\_\_\_\_ RW: .12 @ 49 Deg Other Charges  
Remarks: Tool Sample: 10% O 55%W 35% M Insurance  
Total

Time Set Packer(s) 9:01 AM A.M. P.M. Time Started Off Bottom 1:31 PM A.M. P.M. Maximum Temperature 124

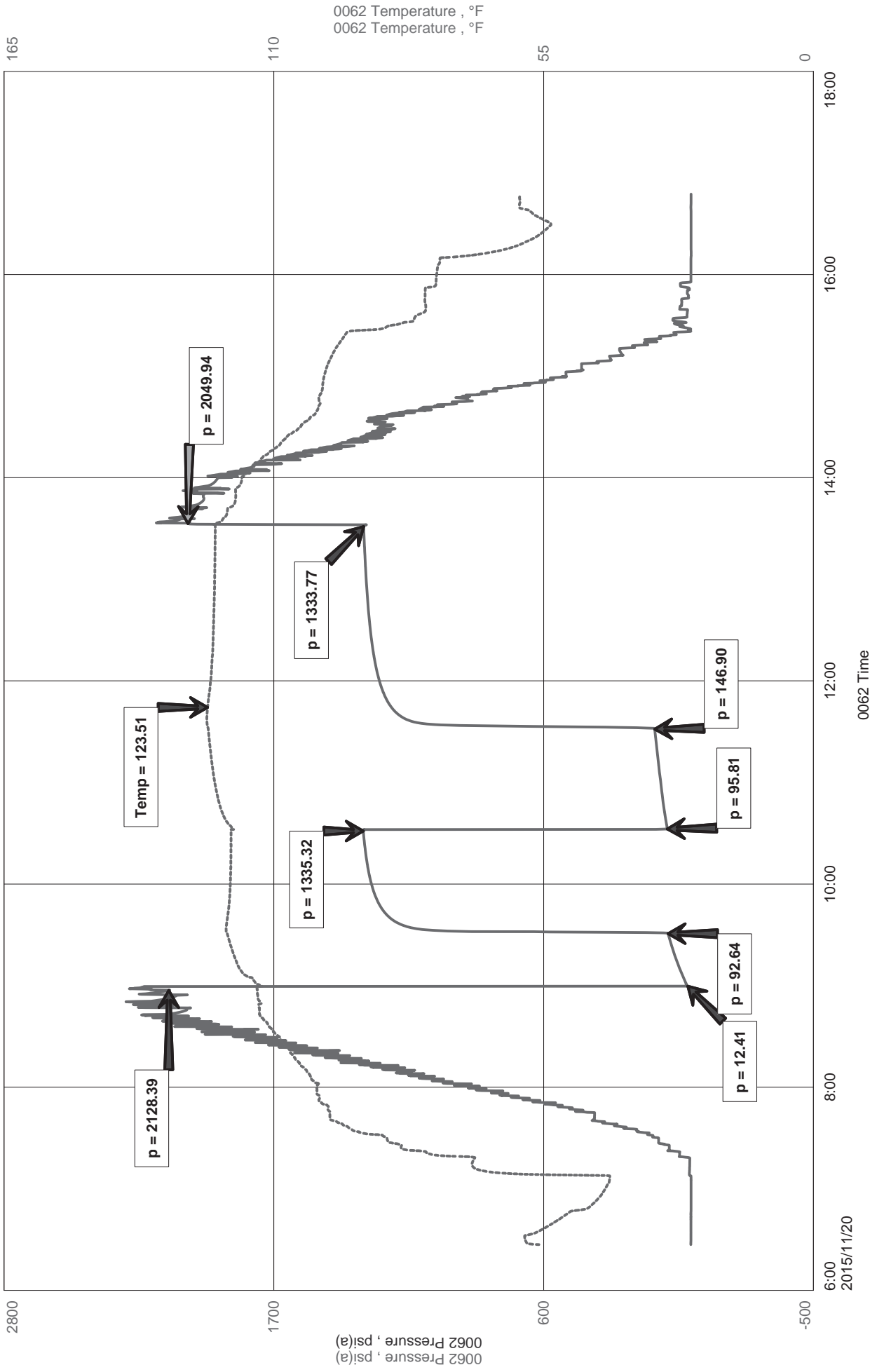
Initial Hydrostatic Pressure..... (A) 2128 P.S.I.  
Initial Flow Period..... Minutes 30 (B) 12 P.S.I. to (C) 93 P.S.I.  
Initial Closed In Period..... Minutes 60 (D) 1335 P.S.I.  
Final Flow Period..... Minutes 60 (E) 96 P.S.I. to (F) 147 P.S.I.  
Final Closed In Period..... Minutes 120 (G) 1334 P.S.I.  
Final Hydrostatic Pressure..... (H) 2050 P.S.I.

Diamond Testing shall not be liable for damages of any kind to the property or personnel of the one for whom a test is made or for any loss suffered or sustained, directly or indirectly, through the use of its equipment, or its statement or opinion concerning the result of any test. Tools lost or damaged in the hole shall be paid for at cost by the party for whom the test is made.

Raydon Exploration Inc  
Dst 2 Kansas City "B" (4648-4660)  
Start Test Date: 2015/11/20  
Final Test Date: 2015/11/20

K & G 2-29  
Formation: Dst 2 Kansas City "B"  
(4648-4660)  
Pool: Wildcat  
Job Number: RR209

# K & G 2-29





Diamond Testing LLC  
P.O. Box 157  
HoisingtonKS 67544

**Ricky Ray - Tester**  
**(620) 617-7261**

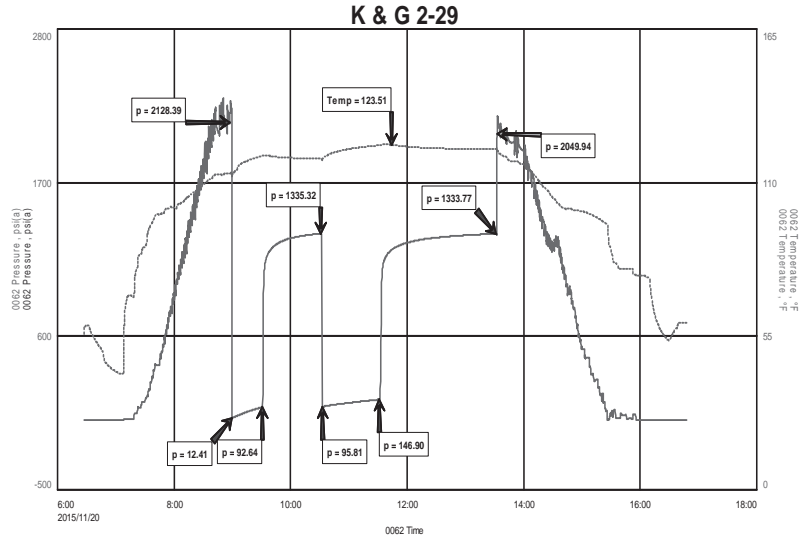
# Wellsite Report

## General Information

Company Name	Raydon Exploration Inc
Contact	Mydron Heston
Well Operator	Raydon Exploration Inc
Well Name	K & G 2-29
Surface Location	Sec: 29-27s-32w (Haskell County)
Field	Wildcat
Well Type	Vertical
Pool	Wildcat
Test Purpose (AEUB)	Initial Test
Qualified By	Ed Grieves
Gauge Name	0062

## Test Information

Job Number	RR209
Test Type	Drill Stem Test
Well Fluid Type	01 Oil
Formation	Dst 2 Kansas City "B" (4648-4660)
Start Test Date	2015/11/20 YYYY/MM/DD
Start Test Time	06:27:00 HH:mm:ss
Final Test Date	2015/11/20 YYYY/MM/DD
Final Test Time	16:47:00 HH:mm:ss



## Test Results

### Recovery:

111	MW	85% W	15% M
179'	MW	80% W	20% M
290'	Total Fluid		

Tool Sample:            10% O            55% W            35% M

PH: 7  
Chlorides: 100,000 PPM  
RW: .12 @ 49 Deg