



TRILOBITE TESTING, INC.

DRILL STEM TEST REPORT

Shakespeare Oil Co. Inc.

21-6S-38W Sherman KS

202 W. Main St.
Salem IL 62881

Flanders #1-21

Job Ticket: 65252

DST#: 3

ATTN: Tim Priest

Test Start: 2015.11.30 @ 11:45:00

GENERAL INFORMATION:

Formation: **Marmaton " C "**

Deviated: No Whipstock: ft (KB)

Time Tool Opened: 13:53:10

Time Test Ended: 19:12:20

Test Type: Conventional Bottom Hole (Reset)

Tester: Ryan Nichols

Unit No: 78

Interval: 4565.00 ft (KB) To 4595.00 ft (KB) (TVD)

Reference Elevations: 3391.00 ft (KB)

Total Depth: 4595.00 ft (KB) (TVD)

3383.00 ft (CF)

Hole Diameter: 7.88 inches Hole Condition: Good

KB to GR/CF: 8.00 ft

Serial #: 6752 Inside

Press @ Run Depth: 45.87 psig @ 4566.00 ft (KB)

Capacity: 8000.00 psig

Start Date: 2015.11.30

End Date: 2015.11.30

Last Calib.: 2015.11.30

Start Time: 11:45:01

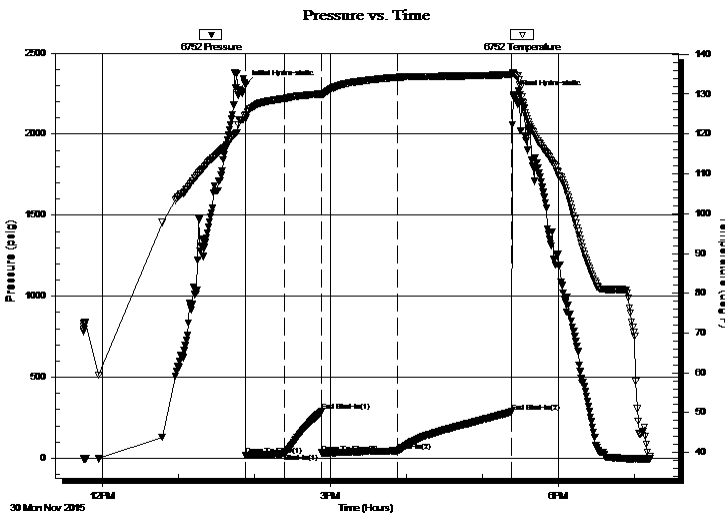
End Time: 19:12:20

Time On Btm: 2015.11.30 @ 13:53:00

Time Off Btm: 2015.11.30 @ 17:24:09

TEST COMMENT: 30 IF - 1" blow built to BoB @ 16 1/2 mins
30 ISI - Surface blow built to 9" died back to 8"
60 FF - Surface blow built to BoB @ 10 1/2 mins
90 FSI - Surface blow built to 7" died back to 3"

PRESSURE SUMMARY



Time (Min.)	Pressure (psig)	Temp (deg F)	Annotation
0	2307.90	124.66	Initial Hydro-static
1	18.46	123.99	Open To Flow (1)
31	29.61	128.90	Shut-In(1)
60	288.85	130.03	End Shut-In(1)
60	33.85	129.96	Open To Flow (2)
120	45.87	134.23	Shut-In(2)
210	287.11	134.88	End Shut-In(2)
212	2242.45	135.46	Final Hydro-static

Recovery

Length (ft)	Description	Volume (bbl)
35.00	GOCM - 10%G - 25%o - 65%M	0.49
30.00	GO - 40%G - 60%o	0.42
30.00	GO - 35%G - 65%o	0.42
0.00	157' GIP	0.00

* Recovery from multiple tests

Gas Rates

	Choke (inches)	Pressure (psig)	Gas Rate (Mcf/d)



**TRILOBITE
TESTING, INC.**

DRILL STEM TEST REPORT

Shakespeare Oil Co. Inc.

21-6S-38W Sherman KS

202 W. Main St.
Salem IL 62881

Flanders #1-21

Job Ticket: 65252

DST#: 3

ATTN: Tim Priest

Test Start: 2015.11.30 @ 11:45:00

GENERAL INFORMATION:

Formation: **Marmaton " C "**

Deviated: No Whipstock: ft (KB)

Time Tool Opened: 13:53:10

Time Test Ended: 19:12:20

Test Type: Conventional Bottom Hole (Reset)

Tester: Ryan Nichols

Unit No: 78

Interval: 4565.00 ft (KB) To 4595.00 ft (KB) (TVD)

Reference Elevations: 3391.00 ft (KB)

Total Depth: 4595.00 ft (KB) (TVD)

3383.00 ft (CF)

Hole Diameter: 7.88 inches Hole Condition: Good

KB to GR/CF: 8.00 ft

Serial #: 8322 Outside

Press @ Run Depth: psig @ 4566.00 ft (KB)

Capacity: 8000.00 psig

Start Date: 2015.11.30 End Date: 2015.11.30

Last Calib.: 2015.11.30

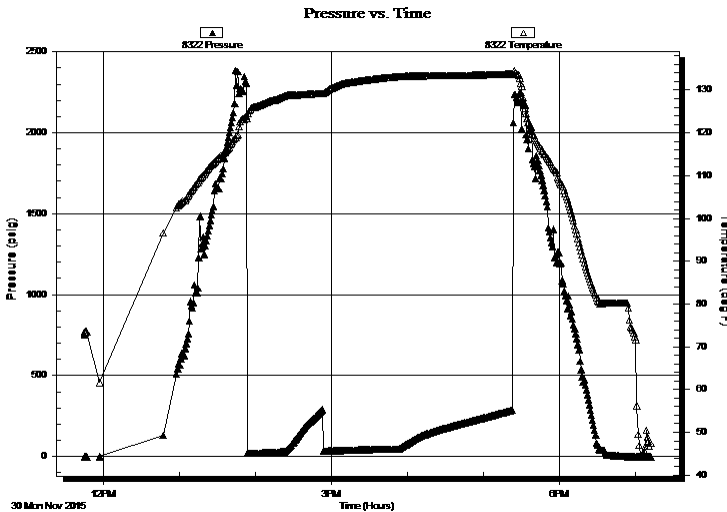
Start Time: 11:45:01 End Time: 19:12:20

Time On Btm:

Time Off Btm:

TEST COMMENT: 30 IF - 1" blow built to BoB @ 16 1/2 mins
30 ISI - Surface blow built to 9" died back to 8"
60 FF - Surface blow built to BoB @ 10 1/2 mins
90 FSI - Surface blow built to 7" died back to 3"

PRESSURE SUMMARY



Time (Min.)	Pressure (psig)	Temp (deg F)	Annotation

Recovery

Length (ft)	Description	Volume (bbl)
35.00	GOCM - 10%G - 25%o - 65%M	0.49
30.00	GO - 40%G - 60%o	0.42
30.00	GO - 35%G - 65%o	0.42
0.00	157' GIP	0.00

Gas Rates

	Choke (inches)	Pressure (psig)	Gas Rate (Mcf/d)

* Recovery from multiple tests



**TRILOBITE
TESTING, INC.**

DRILL STEM TEST REPORT

FLUID SUMMARY

Shakespeare Oil Co. Inc.

21-6S-38W Sherman KS

202 W. Main St.
Salem IL 62881

Flanders #1-21

Job Ticket: 65252

DST#: 3

ATTN: Tim Priest

Test Start: 2015.11.30 @ 11:45:00

Mud and Cushion Information

Mud Type: Gel Chem

Cushion Type:

Oil API:

27 deg API

Mud Weight: 9.00 lb/gal

Cushion Length:

ft

Water Salinity:

ppm

Viscosity: 54.00 sec/qt

Cushion Volume:

bbbl

Water Loss: 6.80 in³

Gas Cushion Type:

Resistivity: ohm.m

Gas Cushion Pressure:

psig

Salinity: 2500.00 ppm

Filter Cake: 1.00 inches

Recovery Information

Recovery Table

Length ft	Description	Volume bbbl
35.00	GOCM - 10%G - 25%o - 65%M	0.491
30.00	GO - 40%G - 60%o	0.421
30.00	GO - 35%G - 65%o	0.421
0.00	157' GIP	0.000

Total Length: 95.00 ft Total Volume: 1.333 bbl

Num Fluid Samples: 0

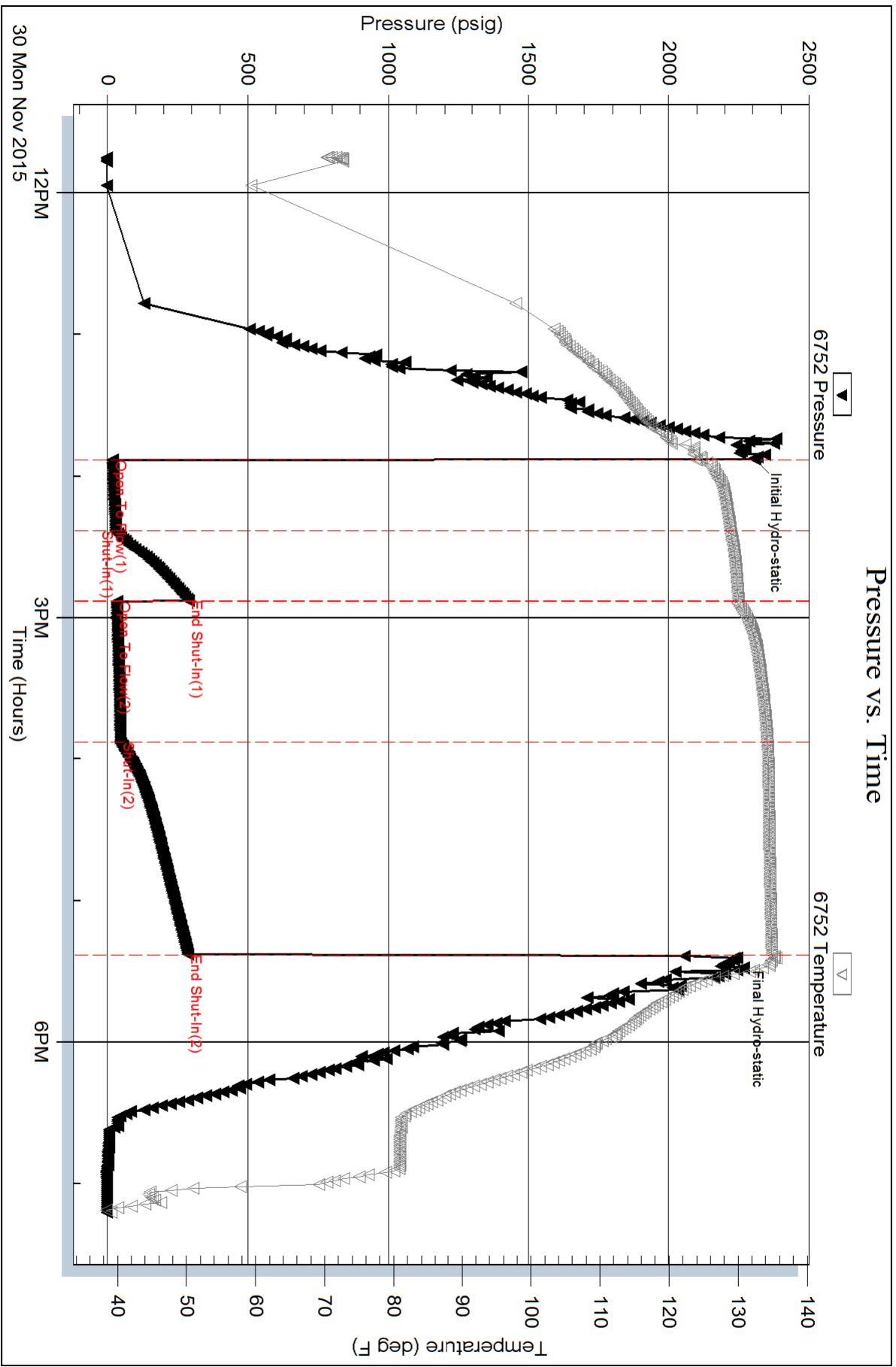
Num Gas Bombs: 0

Serial #:

Laboratory Name:

Laboratory Location:

Recovery Comments: OIL API = 27 @ 60 DEG F



Serial #: 8322

Outside Shakespeare Oil Co. Inc.

Flanders #1-21

DST Test Number: 3

