

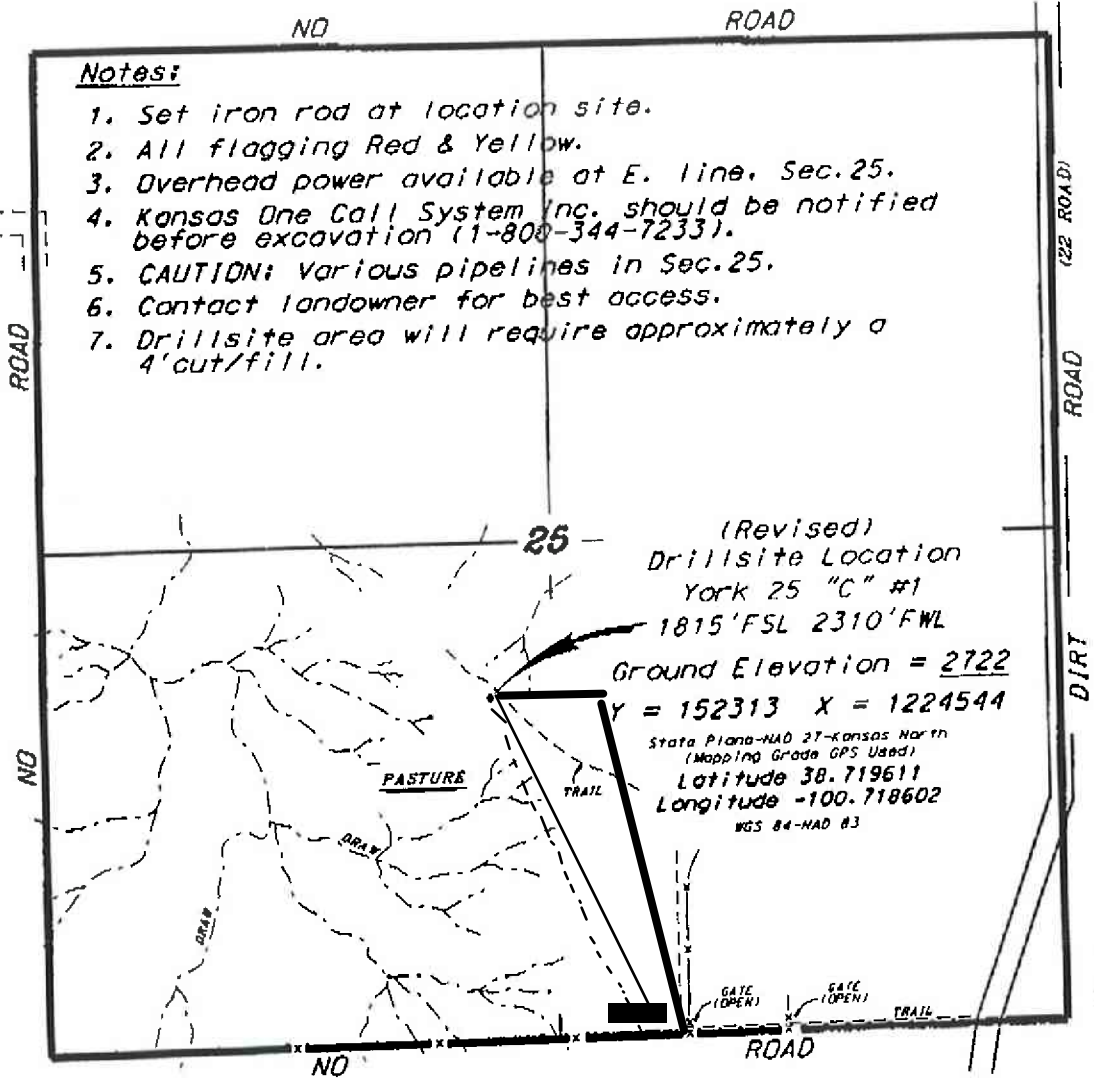
L.D. DRILLING, INC.
YORK LEASE
SW. 1/4, SECTION 25, T15S, R31W
GOVE COUNTY, KANSAS

Directions:
From the intersection of Highway 23 and
a E-W county road (in Gove, Kansas) go
18.0 miles South on Highway 23, then go
6.0 miles West on a county road, then
go 5.0 miles West on a trail, then go
1.0 miles North, then go 0.34 miles North,
then go 0.56 miles West to location.

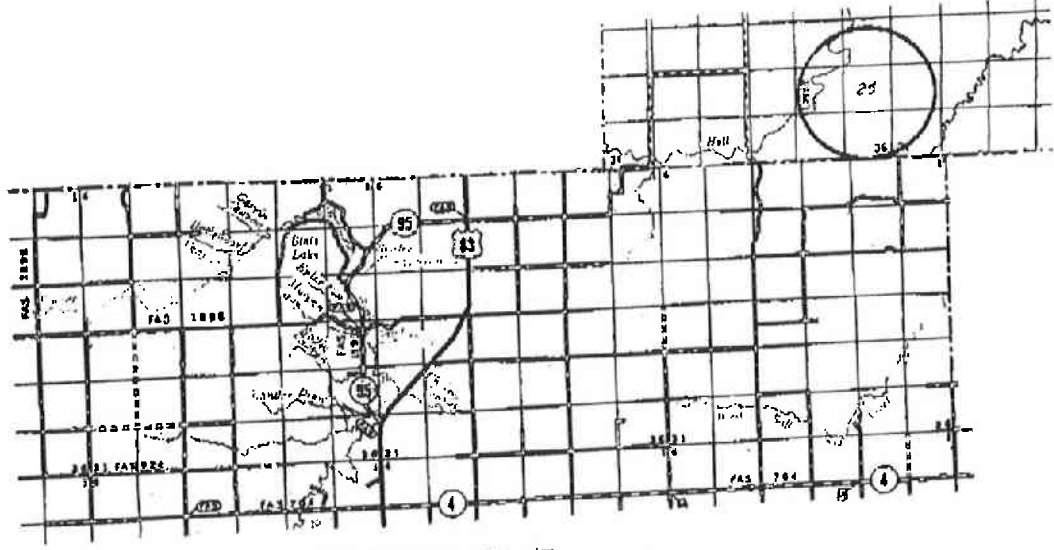
Notes:

1. Set iron rod at location site.
2. All flagging Red & Yellow.
3. Overhead power available at E. line, Sec. 25.
4. Kansas One Call System Inc. should be notified before excavation (1-800-344-7233).
5. CAUTION: Various pipelines in Sec. 25.
6. Contact landowner for best access.
7. Drillsite area will require approximately a 4' cut/fill.

Ingress and egress to location as shown on this plat is per usage only and may not be legally opened for public use. Contact landowner, tenant and county road department for access.



(Revised)
Drillsite Location
York 25 "C" #1
1815' FSL 2310' FWL
Ground Elevation = 2722
Y = 152313 X = 1224544
State Plane-NAD 83-Kansas North
(Mapping Grade GPS Used)
Latitude 38.719611
Longitude -100.718602
NAD 83



• Controlling data is based upon the best maps and photographs available to us and upon a regular section of land containing 640 acres.
• Approximate section lines were determined using the normal standard of care of oilfield surveyors practicing in the state of Kansas. The section corners, which establish the precise section lines, were NOT necessarily located, and the exact location of the drillsite location in the section is not guaranteed. Therefore, the operator securing this service and accepting this plat and all other parties relying thereon agree to hold Central Kansas Oilfield Services, Inc., its officers and employees harmless from all losses, costs and expenses and sold activities released from any liability from incidental or consequential damage.
• Elevations derived from National Geodetic Vertical Datum.

December 8, 2015

CENTRAL KANSAS OILFIELD SERVICES, INC. (620)792-1977

MM
12-16