

GEOLOGIST'S REPORT

DRILLING TIME AND SAMPLE LOG

SUEMAUR EXPLORATION & PROD., LLC
WELL: CAMPBELL #1
LOC.: 1448 North, 546 East,
 from SW corner
SE SW NW SW
SEC. 3-7-28W
SHERIDAN COUNTY, KANSAS
API: 15-179-21413-00-00

ELEVATION
KB: 2772
GL: 2767
LOG MEASURED
FROM: KB

SURFACE CASING
 8 5/8" Set @ 334' KB
 W/220 SX 3% CC 2%gel

PRODUCTION CASING
 P & A

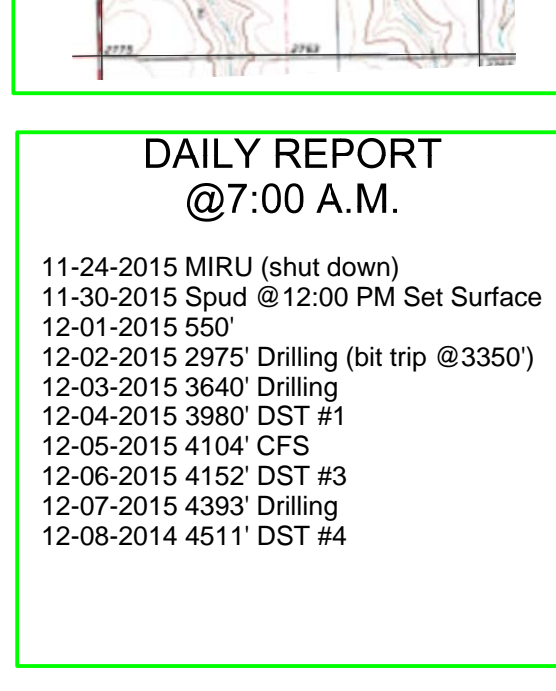
WELL LOG SURVEYS
 DIL/DCP/Sonic/Micro

DRILLING CONTR.: MURFIN RIG #7
SPUD: 12-01-15 COMP: 12-08-2015
MUD UP: 3050' TYPE MUD: CHEM.
DRILL TIME: 3350' to' RTD
RTD: 4510' LTD: 4511'
SAMPLES SAVED: 3350'-RTD
GEOLOGIST: ROBERT J. PETERSEN

ELECTRIC LOG TOPS

FORMATION	DEPTH	DATUM	Well A	Well B*
Stone Corral	2495	+277	N/A	N/A
Base Stone Corral	2529	+243	+7	N/A
Stotler	3565	-793	+7	N/A
Heebner	3692	-920	+10	N/A
Toronto	3929	-1127	+5	+2
Lansing	3924	-1152	+7	+4
Muncie Cr. Shale	3938	-1166	+8	+5
BKC	4154	-1278	+8	N/A
Pawnee	4257	-1384	+8	+8
Cherokee LS	4257	-1485	N/A	+13
Miss	4351	-1579	N/A	+7
LTD	4472	-1700	N/A	+7
LTD	4511	-1739	N/A	N/A

*drill time tops



REFERENCE WELL:

Well A
 SCHAMBERGER #1
 TOM JORDAN
 Sec. 4 T7S R28W
 C SW SW
 (Approx. 1 Mile W)

Well B
 (Drill time only: 3800 to RTD)
 W J COPPINGER
 WAGONER #1
 Sec. 34 T6S R28W
 NW NW NW
 (approx. 1.65 Mi north)

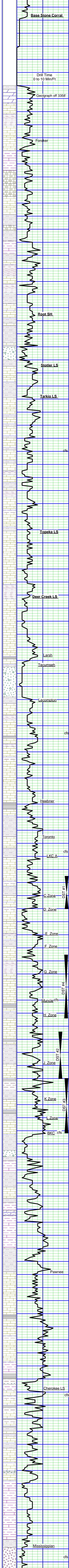
REMARKS AND RECOMMENDATIONS

This well was plugged and abandoned by the operator.

Respectfully submitted,
Robert J. Petersen
 Robert J. Petersen

DAILY REPORT @7:00 A.M.

11-24-2015 MIRU (shut down)
 11-30-2015 Spud @12:00 PM Set Surface
 12-01-2015 550'
 12-02-2015 2975' Drilling (bit trip @3350')
 12-03-2015 3640' Drilling
 12-04-2015 3980' DST #1
 12-05-2015 4104' CFS
 12-06-2015 4152' DST #3
 12-07-2015 4393' Drilling
 12-08-2014 4511' DST #4



Sample Description Bit Trip @3350'
Strap 0.01' Long to board

SH; Red/pale green, very sandy (fg) + trace LS; Cream/white, chalky (poor sample lots of lcm 3360)

LS; Cream/dark gray, fine crystalline, foss, dolomitic, cherty + SH; Red/gray +SD; Lt gray, fine grained, friable (3370)

LS; Lt gray, fine crystalline, very foss, chalky, trace dead stain + LS; Gray, dense, arg., trace chert + SH; Dark gray/red (3380)

LS; Cream/gray, mottled, fine crys to dense, very foss, cherty, chalky + SD; Gray, fg, sa-sr, well-cem (3390)

LS; Tan/brown, fine crystalline to dense, foss, mottled, chalky-mealy, tr dead stain + SH; Green/gray (3410)

LS; Cream/lt gray, fine crystalline to dense, dolo, foss, chalky, cherty (tan inclusions) + tr SH; Pale green (3420)

LS; Cream/lt gray, fine crystalline, foss-mottled, abundant chert; cream/dark gray mottled, sharp + SH; Dark gray (3430)

LS; Gray/dark gray, mottled, foss, dolo, tr dead stain, increase Chert; Gray/brown/black, ang to sharp, foss + SH; Black (3440 increase 3450) Chalky (3450)

LS; Gray, dense, arg/SH; Gray, soft (3450)

LS; Cream/tan/arg, dense, very foss, mottled, cherty, chalky + SH; Red/gray (3460) + Chert; Black/brown (3470)

SH; Red/gray + LS; Gray, dense, sandy (3470)

LS; Cream/gray, dense, foss, mottled, very chalky, cherty + SH; Red/gray, tr SD; Gray, fine grained (3480)

SD; Gray, fine grained, calc + LS; Cream/gray, dense, foss, chalky, cherty + SH; Maroon/gray, sandy (3490)

LS; Cream/tan, fine crystalline, foss + SH; Gray/red + SD; Gray, fg, friable (3500)

LS; Cream/lt gray, dense, sl foss, cherty, chalky + SH; Lt gray (3510)

SH; Red/gray, silty-sandy + SD; Gray, fine grained, fr (3520-3530)

LS; Cream/dark gray, dense, arg (3530)

LS; Cream/lt gray, dense, foss-sub gran in part, trace yellow mineral stain, chalky, cherty + SH; Red/gray + SD; Gray, fine grained, friable to well-cem (3540)

SH; Gray + SS; Gray, fine grained, silty, well-cem (3550)

LS; Cream/tan, fine crystalline to dense, sl foss (3560)

SD; Gray/tan, very fine grained, micaceous, well-cemented/SD; Cream, very fine grained, well-cem to hard + SH; Gray (3560) + SH; Dark gray (3570)

LS; Cream/lt gray, dense, foss, sandy, sl cherty (3580)

SD; Tan/gray, fine grained, well-cem to hard + SH; Gray, silty (3590)

SD; Gray, fine grained, subangular, micaceous + SH; Gray, silty-sandy (3600)

LS; Cream/gray, fine crystalline to dense, foss in part (3600-3610)

SH; Gray + SD; Gray, fine grained, subrounded, hard, silty (3610-3620)

LS; Cream, fine crystalline to dense, foss, chalky (3620)

LS; Cream, fine crystalline to dense, oolitic-granular, mottled, very foss, dense, chalky, chert-tan, trace stain, no vis por (3630)

SH; Red/gray, silty (3630/20')

LS; Cream, fine crystalline, foss + LS; Lt gray, dense, chalky, tr edge stain (3630/20')

SH; Red/gray (3640)

LS; Cream, fine crystalline to dense, foss, very chalky, sl dolo (3640-3650)

SH; Red, silty + SD; Gray, fg, friable (3650) Morgan Mud Check 3635'
Vis 69 W/ 8.8 W/L 5.2

LS; Cream/gray/brown, fine crystalline to dense, foss, cherty + SH; Green (3660)

LS; Cream/gray, fine crystalline to dense, foss, cherty (3670)

LS; Cream/ Tan/brown, fine crystalline to dense, sl foss, tr poor moldic por, tr weak stain, nsl + tr SH; Dark gray (3680)

SH; Red, silty/tr SH; Black (3690)

LS; Cream/white, fine crystalline, oolitic granular foss subgran in part, chalky (3690-3700)

SH; Red/gray (3700)

LS; Cream/white, fine crystalline, foss, chalky + LS; Lt gray, dense, foss (3710)

SH; Red/gray, silty (3710)

LS; Cream/tan, fine crystalline to dense, foss, subgran to granular, chalky (soft/white) (3720)

LS; Cream/lt gray, fine crystalline, ool/foss, chalky, cherty (3730)

LS; Cream/lt gray, fine crystalline, foss, very chalky, sl dolo, tr SH; Gray/green/black (3740) increase SH; Black + SH; Red, silty + LS; Gray, fine crystalline with shale discoloration (3750)

LS; Cream/white, fine crystalline, ool, very chalky-soft (3760-3770)

LS; Cream/tan, fine crystalline, ool, tr good vug por (barren), no odor (4476/40')

LS; Cream/tan, fine crystalline to dense, foss, chalky (3790)

SH; Black (trace 3800/3810)

LS; Cream/tan, fine crystalline, foss (3810)

SD; Gray, fine grained, friable, micaceous, calcareous in part, trace dead stain in soft calc matrix + SH; Red/gray (3810-3820)

SH; Red, sandy (3830)

LS; Cream/gray, fine crystalline to dense, very chalky, w/tr poor to fair moldic por, tr dark dead oil (solid) (3840)

SH; Red/gray, silty-sandy (3845)

LS; Cream/gray, fine crystalline, foss, chalky (3845/20') + LS; Cream, dense (3745/40')

LS; Cream/lt gray, fine crystalline to dense, foss (3860)

SH; Black (trace 3860/incr 3870)

LS; Cream/tan, fine crystalline, foss, chalky, trace stain, no vis por (3870)

SH; Gray (3880)

LS; Cream/tan, fine crystalline, ool, tr poor intergran por (barren), chalky (soft) + LS; Tan, fine crystalline to dense, sl dol (3880)

LS; Cream/white, fine crystalline, foss, chalky (soft) + tr SH; Red/gray (3890)

LS; Tan/gray, dense, sl foss (3900)

LS; Tan/cream/lt gray, fine crystalline to dense, foss, sl dolo, chalky (3910)

SH; Black (3910)

LS; Tan, dense foss (3918)

SH; Red/gray/maroon/sandy (3918/3930)

LS; Cream/lt gray, fine crystalline, ool/foss, chalky, cherty w/por ppt moldic por, trace dead tarry residual oil, nsl, no odor (3934-3934/20')

SH; Maroon/gray, sandy (3940/3950)

LS; Cream/white, very fine crystalline to dense, ool, very chalky, trace dead residual stain (black) on poor fracture por and poor ppt por, nsl, no odor (3950/3960)

LS; Cream/lt gray, fine crystalline, foss, chalky, cherty (orange/white mottled) trace SH; Green/black (3960/3970)

LS; Cream/lt gray, fine crystalline to dense, ool, chalky (3980)

SH; Red/green/gray, sandy (3980)

LS; Cream/tan, fine crystalline, foss w/air moldic to vug por, med black stain, sfl, very faint odor in agitated sample, dark gray-brown stain on dry (3980 to 3980/20')

LS; Cream/lt gray, fine crystalline to dense, sl foss, very cherty (3980/40')

SH; Red, silty (3991' /20')

LS; Cream/lt gray, fine crystalline, dolomitic, foss in part, cherty (white-blocky), very chalky, tr residual oil stain with dead oil flakes, nsl, no odor (3991)

LS; Cream/tan, fine crystalline-dolomitic, chalky+ LS; Tan, dense-sil foss + SH; Gray (4000)

SH; Dark gray (4010)

LS; Cream, fine crystalline to dense, foss, very chalky, w/por moldic por, tarry stain, trace bleeding show tarry oil, vsslo, no odor, dark brown spotted to patchy stain on dry (4010)

SH; Red, silty + Chalk; White, soft, gummy (4020) Vis 51/Wt 9.3/LCM 2#

LS; Cream/lt gray/with some red shale stain, fine crystalline to dense, oomoldic, chalky, w/por oomoldic & tr fracture por, trace dark brown stain on frac por, nsl, no odor (4020/20')

LS; Lt gray, fine crystalline to dense, ool/foss in part, chalky (4020/40') SH; Green (tr 4020/40' increase 4020/60')

SH; Maroon/gray, silty (4030) Morgan Mud Check 3980'
Vis 56i Wt 9.2/WL 5.6

LS; Cream/lt gray, fine crystalline, ool/foss, chalky w/med crumbly residual oil in mealy chalk + LS; Lt gray, very fine crystalline to dense + Chert (White/orange/gray block) (4040)

LS; Cream/lt gray, fine crystalline to dense, ool/foss w/trace poor moldic por, trace tarry stain w/vsslo (1 drop from crushed sample), no odor + LS; Gray, dolomitic (4050)

LS; Cream, fine crystalline, ool, chalky (soft) (4050/20')

SH; Black (tr 4060/4070)

LS; Cream, fine crystalline, ool, chalky+ SH; Red/gray (4070)

LS; Cream/lt gray/tan, fine crystalline, ool, chalky (4077/40')

LS; Brown/tan, fine crystalline, foss (4090)

SH; Black (trace 4090/4100)

LS; Cream/gray, fine crystalline to dense (4100)

SH; Red/gray, silty, sandy + LS; Gray, arg (4104)

LS; Cream, dense, foss, cherty w/air to good moldic por, gsf, no odor, even sat on dry (4104/20-40')

LS; Cream/gray mottled, fine crystalline, foss (4104/40')

LS; Cream/gray/tan, fine crystalline to dense, foss, chalky (4110/4110-30')

SH; Dark gray/black + flood SH; Green-gray/red (4120)

SH; Red/maroon, silty-sandy, calc in part, tr SD; Gray, vfg, friable, tr LS; Cream/gray, dense, foss (4130)

LS; Cream, fine crystalline, flossiferous-subgranular, chalky (4138)

LS; Cream/tan, fine crystalline to dense, oolitic-granular (hard), w/trace of very poor ppt por, sfl, no odor, light spotted stain on dry (4138/20')

SH; Red/brown/black (4138/4142)

SH; Red, silty (abundant 4150)

LS; Cream, fine crystalline to dense, ool-granular in part, w/trace red shale discoloration (4150)

LS; Cream/gray, fine crystalline to dense, foss in part, very chalky (4152/20')

LS; Gray/tan, dense, foss, blocky (4152/40')

SH; Red/gray (4170) + SH; Green/gray-silty (4180)

LS; Cream/gray, fine crystalline to dense, foss, chalky (4180)

SH; Red/gray/silty-sandy w/SS; Red, coarse, hard + SD; Gray, fine grained, friable to well-cem + LS; Lt gray, fine crystalline to dense, foss (4190)

LS; Cream/lt gray, w/trace red shale stain fine crystalline to dense, foss, chalky, cherty (gray/tan angular) increase chert (4210) + SD; Red, fine to coarse, calc, well-cem + abund SH; Red/gray (4200 increase 4210)

LS; Cream, fine crystalline, chalky, sandy + SH; Reddish-brown, silty w/hard calc concretions, SH; Green/gray, soft, SS; Gray/tan/brown, friable to hard-siltstone; Blue-gray/tan, soft (4220)

SH; Reddish-brown/gray/green + SD; White, very fine grained, calc-grading to LS; White; sandy-chalky + LS; Gray/brown, dense (4230)

SH; Reddish-brown, mottled, sandy w/calc nodules + SH; Green-gray, silty (4240)

SH; Reddish-brown, silty-sandy + SD; Gray, very fine grained + LS; Cream/white, chalky-sandy w/trace red shale impurity (4250)

LS; Cream, fine crystalline, chalky, sandy + SD; Cream, very fine grained, calc (4260-4270)

LS; Cream/lt gray, dense (4270)

LS; Cream/gray, dense, chalky, cherty + SH; Gray (4330)

LS; Cream/gray, fine crystalline to dense, foss in part, abundant (4340)

SH; Black, carb/SH; Red/gray (4340/4350)

LS; Gray/cream, mottled, chalky, soft, SH; Gray, soft, subundant tr SD; Clear w/shale impurity to gray, med gr, subangular, friable, tr LS; Tan, dense, foss, w/dull fl(2-3 pieces) (4352)

SH; Red/gray/green, silty (4352/30')

LS; Gray/tan, dense, foss-gran in part, chalky, cherty + SH; Gray (4360)

LS; Cream, fine crystalline, foss, chalky, cherty (4360-4370)

SH; Black, carb, /SH; Gray (4370)

LS; Cream/lt gray/tan, fine crystalline to dense, ool + SH; Black/gray/red (4380)

LS; Gray/tan, dense, foss in part, chalky + SH; Gray, sandy (4390) Morgan Mud Check 4388'
Vis 76
Wt 9.3
WL 6.4

LS; Cream/tan/gray, fine crystalline to dense, chalky, cherty, 1 piece with dark brown dead oil stain + SH; Gray/dark gray + SH; Gray, silty-sandy, SD; Clear, coarse, subrounded, mod cem (4400)

LS; Cream/gray, fine crystalline to dense, sl foss, chalky + SH; Gray/dark gray + SH; Reddish-brown/gray, soft, silty-sandy, SD clusters, clear/shaly red, coarse, subangular to subrounded, mod calc cem (4410)

SH; Red/gray + LS; Cream/tan/gray, fine crystalline to dense, chalky, shaley (red) + cluster SD; Clear, coarse, calc (4420)

LS; Cream/tan, dense, foss, chalky, sandy (4030)

LS; Cream, fine to med crystalline, reworked Chert; foss + SH; Red/gray, sandy; Sand cluster; Red, hard, shaley (4440)

SH; Red, sandy + LS; Cream, dense, chalky (4450)

LS; Cream, dense + SH; Reddish-brown, SD; Red/clear, coarse, calc, shaley (4460)

SH; Olive/mustard yellow + LS; Cream, dense, SD; Clear, coarse (4470)

SH; Red/mustard yellow, sandy (4476)

Chert; White/yellow, sharp w/tr white, tripolitic + SH; Black/pale green/brick red (4476/20') increase tripolitic chert, vuggy-barren, no show (4476/40')

Chert; White/yellow/orange, foss, sharp + Chert; White, tripolitic, chalky + SH; Olive/black (4490)

+LS; Gray, dense, trace Dolo; Gray (4501/20')

Chert; White/yellow/orange, sharp with Dolo; Cream/white, fine to med crystalline, chalky (4501/40')

SH; Black, carb/SH; Red/gray + LS; Gray, dense, tr Dolo; White/cream, fine crystalline, chalky (4510) increase Dolo; White, trace coarse crystalline Dolo; Yellow, good por, nsl, LS; Gray, dense, Dolo; Yellow, coarse crystalline, SH; Black/green/brick red (4510/20')

Chert; White/yellow, blocky + SH; Mustard yellow (4510/60')

LS; Cream/lt gray, dense (4270) Morgan Mud Check 4510
Vis 54
Wt 9.2
WL 6.0