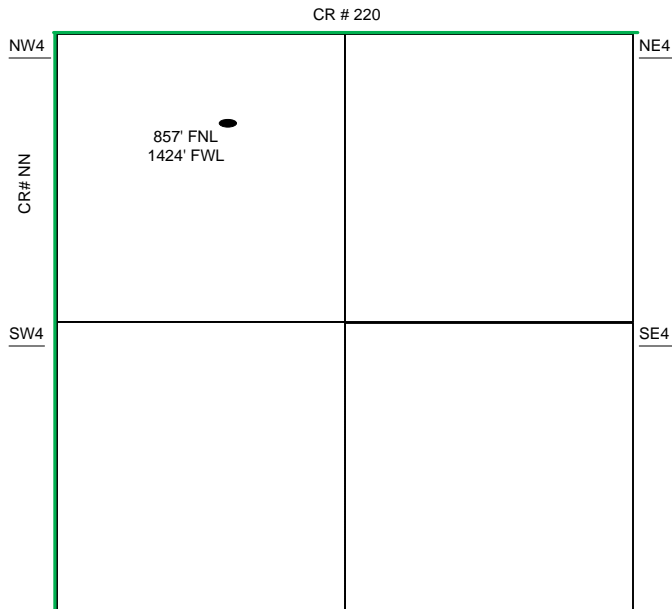
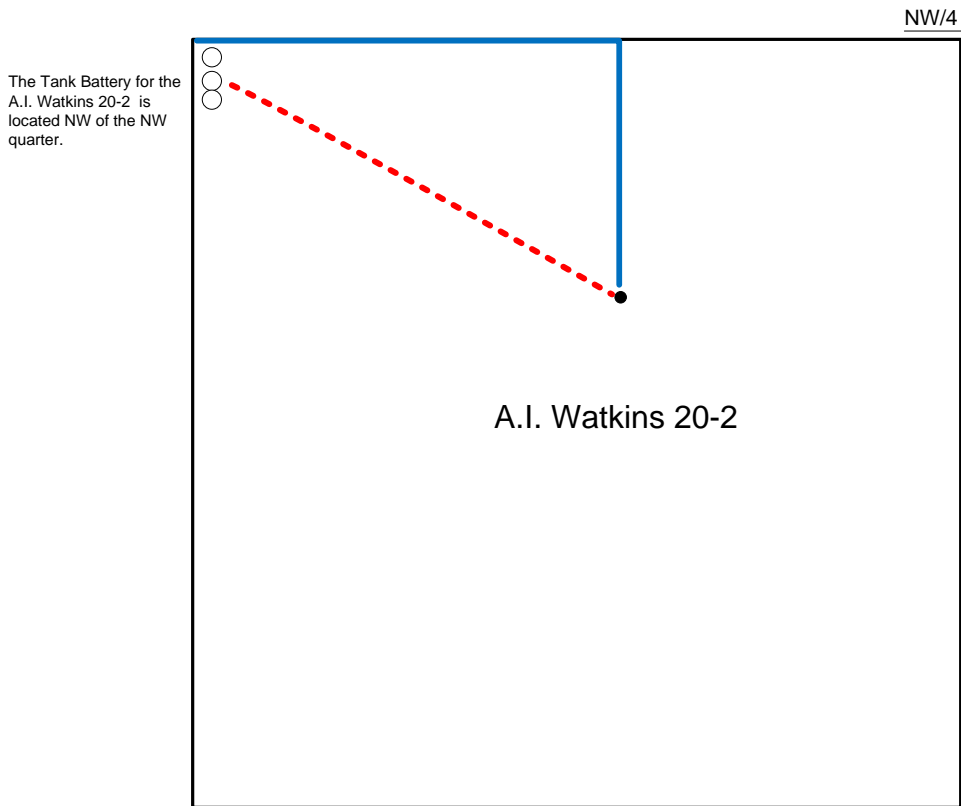


Proposed Plan of Construction

A.I. Watkins 20-2
Sec 20 T30S-R32W
Haskell County, KS



Sec 20 - T30S - R32W



Proposed Details of
NW/4 Sec 20 - T30S - R32W

Proposed Site Diagram
A.I. Watkins 20-2
December 22, 2015

Note-Drawing **Not** to Scale