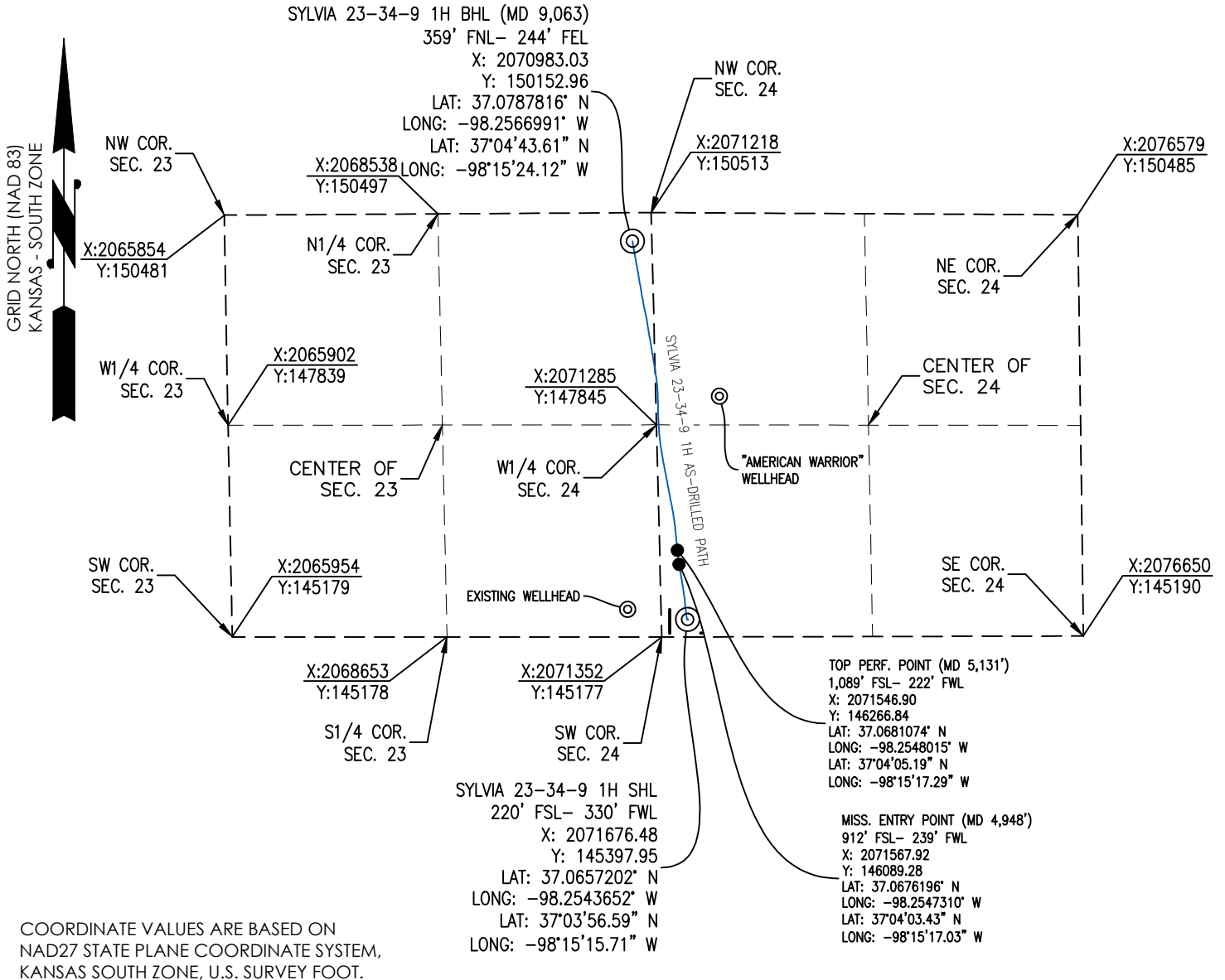




Crafton Tull
 SURVEYING

HARPER COUNTY, KANSAS

220' FSL- 330' FWL SECTION 24 TOWNSHIP 34S RANGE 09W 6TH P.M.



COORDINATE VALUES ARE BASED ON
 NAD27 STATE PLANE COORDINATE SYSTEM,
 KANSAS SOUTH ZONE, U.S. SURVEY FOOT.

ELEVATION:
 1,279' GR. AT STAKE

OPERATOR: TAPSTONE ENERGY WELL NO: 1H

LEASE NAME: SYLVIA 23-34-9

TOPOGRAPHIC & VEGETATION: LOCATION FELL IN A FIELD

GOOD DRILL SITE: YES REFERENCE STAKES OR ALTERNATE LOCATION STAKES SET: NONE

BEST ACCESSIBILITY TO LOCATION: SOUTH OR WEST LINE

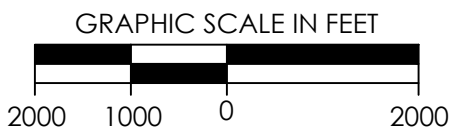
DISTANCE & DIRECTION
 FROM HWY JCT OR TOWN: FROM THE JCT. OF STATE HWY 2 AND SW 120 AVENUE, TRAVEL SOUTH ON SW 120 AVENUE FOR APPROXIMATELY 6 MILES TO THE SW CORNER OF S.24-T34S-R09W.

(THE FOLLOWING INFORMATION WAS GATHERED USING A GPS RECEIVER ACCURACY ±2.3 METERS)

GPS DATUM: NAD-27
 LAT: 37.0657202° N
 LONG: -98.2543651° W

STATE PLANE COORDINATES:
 ZONE: KS-SOUTH NAD-27
 X: 2071676.48
 Y: 145397.95

GENERAL NOTES:
 THE TIES AND FOOTAGES SHOWN ON THIS PLAT ARE FROM LINES OF OCCUPATION FROM A SURVEY MADE ON THE GROUND AND / OR BEARING AND DISTANCES FROM THE GENERAL LAND OFFICE PLAT OF THE AREA SHOWN AND MAY NOT BE THE ACTUAL PROPERTY CORNERS. THIS PLAT DOES NOT REPRESENT A TRUE BOUNDARY SURVEY. DRILL SITE CONDITION DETERMINATIONS WERE MADE BY SANDRIDGE ENERGY INC. REPRESENTATIVES.



REVISION	"SYLVIA 23-34-9 1H" PART OF THE SW1/4 OF SECTION 24, T-34-S, R-09-W AS-DRILLED PLAT HARPER COUNTY, KANSAS		
	SCALE: 1" = 2000'	DRAWN BY: JWB	SHEET NO.: 1 OF 1