



TEMPORARY ABANDONMENT WELL APPLICATION

All blanks must be complete

OPERATOR: License# _____
Name: _____
Address 1: _____
Address 2: _____
City: _____ State: _____ Zip: _____ + _____
Contact Person: _____
Phone:(_____) _____
Contact Person Email: _____
Field Contact Person: _____
Field Contact Person Phone: (_____) _____

API No. 15- _____
Spot Description: _____
____ - ____ - ____ - ____ Sec. _____ Twp. _____ S. R. _____ E W
_____ feet from N / S Line of Section
_____ feet from E / W Line of Section
GPS Location: Lat: _____, Long: _____
(e.g. xx.xxxxx) (e.g. -xxx.xxxxx)
Datum: NAD27 NAD83 WGS84
County: _____ Elevation: _____ GL KB
Lease Name: _____ Well #: _____
Well Type: (check one) Oil Gas OG WSW Other: _____
 SWD Permit #: _____ ENHR Permit #: _____
 Gas Storage Permit #: _____
Spud Date: _____ Date Shut-In: _____

	Conductor	Surface	Production	Intermediate	Liner	Tubing
Size						
Setting Depth						
Amount of Cement						
Top of Cement						
Bottom of Cement						

Casing Fluid Level from Surface: _____ How Determined? _____ Date: _____
Casing Squeeze(s): _____ to _____ w / _____ sacks of cement, _____ to _____ w / _____ sacks of cement. Date: _____
(top) (bottom) (top) (bottom)
Do you have a valid Oil & Gas Lease? Yes No
Depth and Type: Junk in Hole at _____ Tools in Hole at _____ Casing Leaks: Yes No Depth of casing leak(s): _____
(depth) (depth)
Type Completion: ALT. I ALT. II Depth of: DV Tool: _____ w / _____ sacks of cement Port Collar: _____ w / _____ sack of cement
(depth) (depth)
Packer Type: _____ Size: _____ Inch Set at: _____ Feet
Total Depth: _____ Plug Back Depth: _____ Plug Back Method: _____

Geological Data:

Formation Name	Formation Top	Formation Base	Completion Information
1. _____	At: _____	to _____ Feet	Perforation Interval _____ to _____ Feet or Open Hole Interval _____ to _____ Feet
2. _____	At: _____	to _____ Feet	Perforation Interval _____ to _____ Feet or Open Hole Interval _____ to _____ Feet

UNDER PENALTY OF PERJURY I HEREBY ATTEST THAT THE INFORMATION CONTAINED HEREIN IS TRUE AND CORRECT TO THE BEST OF MY KNOWLEDGE

Submitted Electronically

Do NOT Write in This Space - KCC USE ONLY

Date Tested: _____ Results: _____ Date Plugged: _____ Date Repaired: _____ Date Put Back in Service: _____

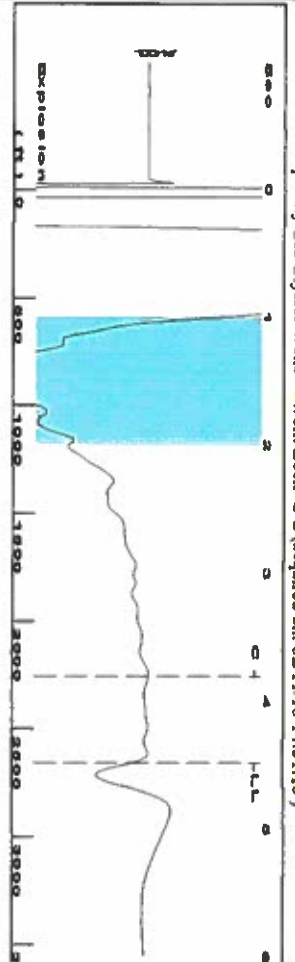
Review Completed by: _____ Comments: _____

TA Approved: Yes Denied Date: _____

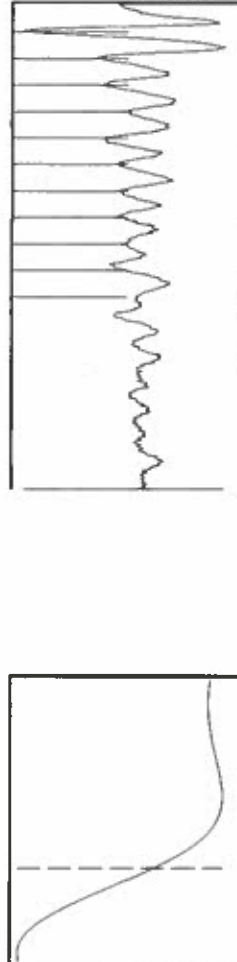
Mail to the Appropriate KCC Conservation Office:

	KCC District Office #1 - 210 E. Frontview, Suite A, Dodge City, KS 67801	Phone 620.225.8888
	KCC District Office #2 / UPGS - 3450 N. Rock Road, Building 600, Suite 601, Wichita, KS 67226	Phone 316.630.4000
	KCC District Office #3 - 1500 SW Seventh Steet, Chanute, KS 66720	Phone 620.432.2300
	KCC District Office #4 - 2301 E. 13th Street, Hays, KS 67601-2651	Phone 785.625.0550

Group: Oxy Usa Ulysses Wells Well: Beck C-2 (acquired on: 02/11/16 14:51:10)

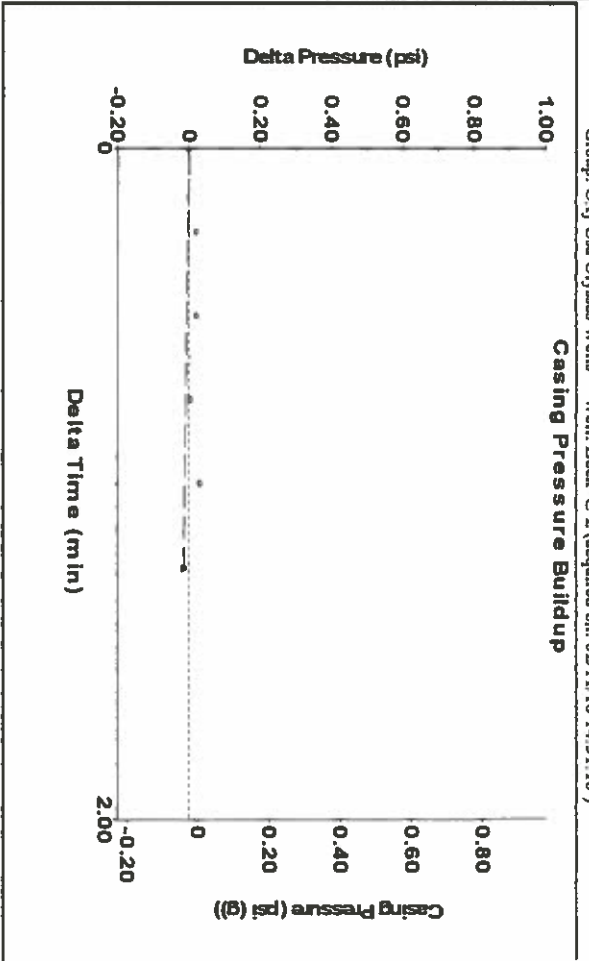


Filter Type High Pass
Manual Acoustic Velocity 163.3 ft/s
Automatic Collar Count Yes
Manual JTS/sec 18.3486
Time 4.482 sec
Joints 83.8469 ft
Depth 2657.95 ft



Analysis Method: Automatic

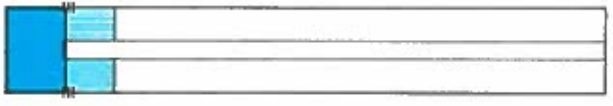
Group: Oxy Usa Ulysses Wells Well: Beck C-2 (acquired on: 02/11/16 14:51:10)



Change in Pressure -0.01 psi
Change in Time 1.25 min
PT8197
Range 0 - 7 psi

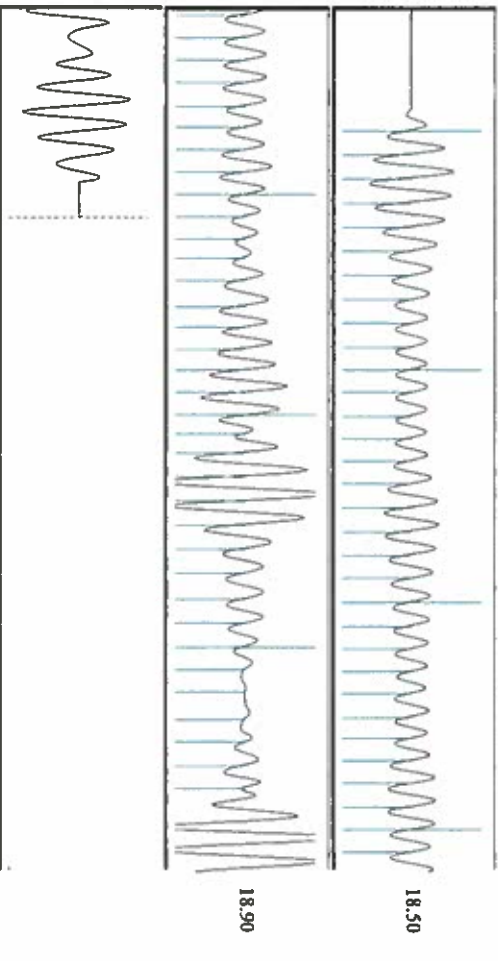
Group: Oxy Usa Ulysses Wells Well: Beck C-2 (acquired on: 02/11/16 14:51:10)

Production Current	Potential	Casing Pressure	Producing
Oil -*-	-*- BBL/D	-0.0 psi (g)	Annular
Water -*-	-*- BBL/D	-0.015 psi	Gas Flow
Gas -*-	-*- Msc/D	1.25 min	% Liquid
IPR Method Vogel		Gas/Liquid Interface Pressure	0 Msc/D
PBRP/SBHP -*-		1.0 psi (g)	
Production Efficiency 0.0			
Oil 40 deg API		Liquid Level Depth	
Water 1.05 Sp.Gr: H2O		2657.95 ft	
Gas 0.72 Sp.Gr: AIR		Pump Intake Depth	
Acoustic Velocity 1186.05 ft/s		2961.00 ft	
		Formation Depth	
		2940.00 ft	



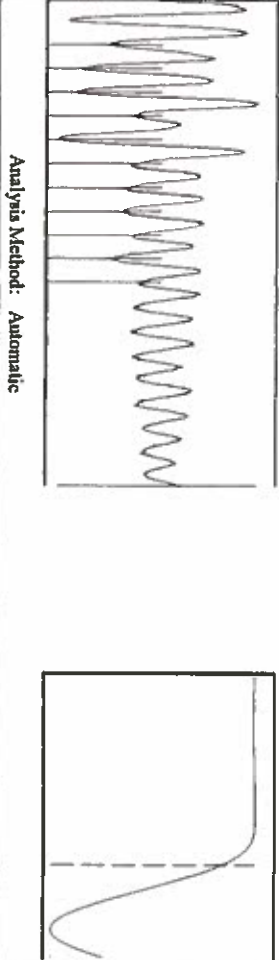
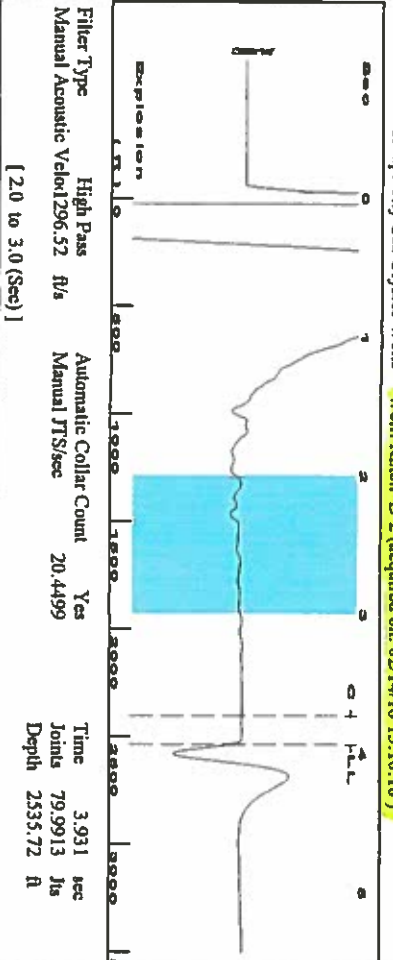
Formation Submergence	303 ft
Total Gaseous Liquid Column HT (TVD)	303 ft
Equivalent Gas Free Liquid HT (TVDF)	303 ft
Acoustic Test	
Saul Hernandez Tech	
Pump Intake	104.7 psi (g)
Producing BHP	97.6 psi (g)
Static BHP	psi (g)

Group: Oxy Usa Ulysses Wells Well: Beck C-2 (acquired on: 02/11/16 14:51:10)

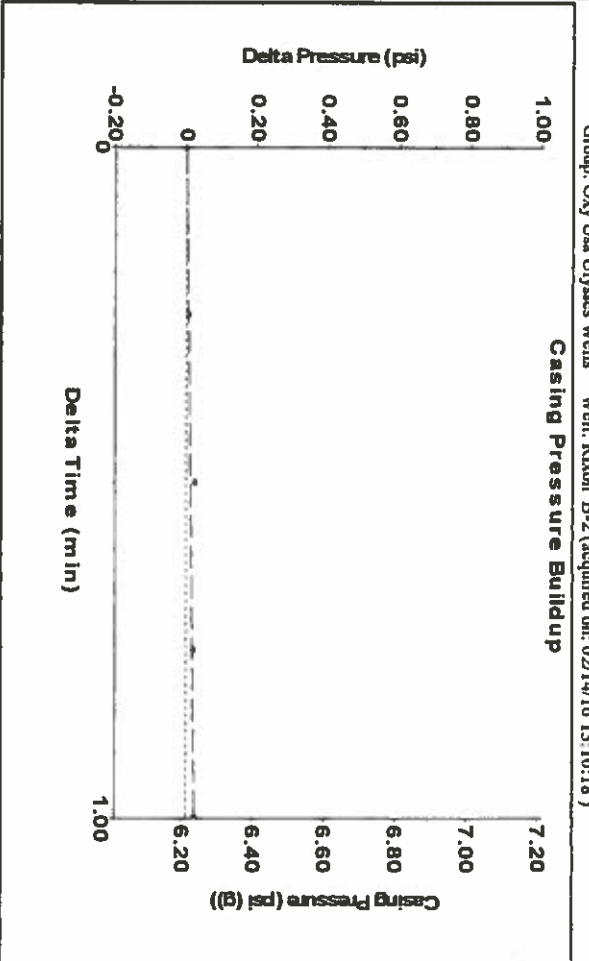


Acoustic Velocity	1186.05 ft/s	Joints counted	66
Joints Per Second	18.7075 ft/sec	Joints to liquid level	83.8469
Depth to liquid level	2657.95 ft	Filter Width	16.3486
Automatic Collar Count	Yes	Time to 1st Collar	0.28
			20.3486
			3.808

Group: Oxy Usa Ulysses Wells Well: Rixon B-2 (acquired on: 02/14/16 13:10:18)



Group: Oxy Usa Ulysses Wells Well: Rixon B-2 (acquired on: 02/14/16 13:10:18)



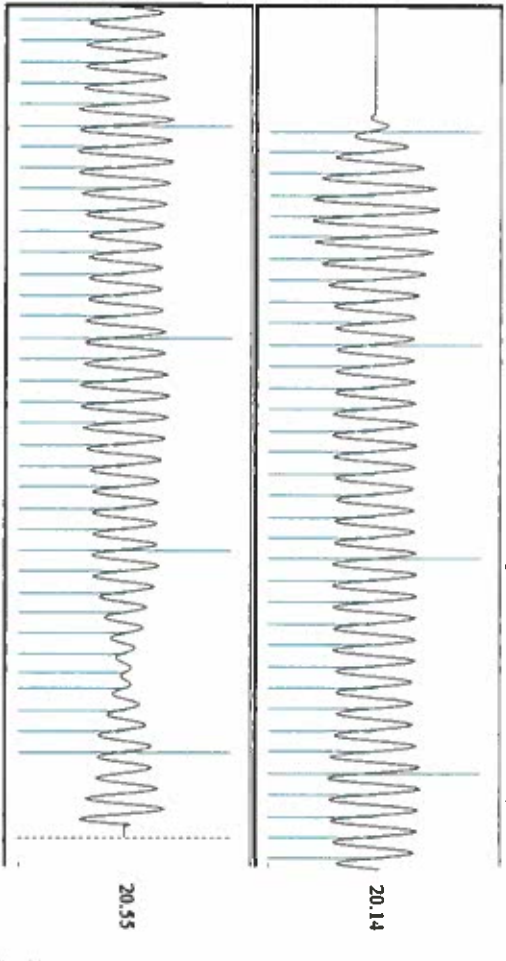
Change in Pressure: 0.02 psi
Change in Time: 1.00 min
PT8197 Range
0 - 7 psi

Group: Oxy Usa Ulysses Wells Well: Rixon B-2 (acquired on: 02/14/16 13:10:18)

Production Current	Potential	Casing Pressure	Producing
Oil - * -	BBL/D	6.2 psi (g)	Annular
Water - * -	BBL/D	Casing Pressure Buildup	Gas Flow
Gas - * -	Masc/D	0.024 psi	0 Masc/D
IPR Method	Vogel	Gas/Liquid Interface Pressure	% Liquid
PBHP/SBHP	- * -	1.00 min	100 %
Production Efficiency	0.0	7.6 psi (g)	
Oil 40 deg API		Liquid Level Depth	
Water 1.05 Sp.Gr:H2O		2535.72 ft	
Gas 0.72 Sp.Gr:AIR		Pump Intake Depth	
Acoustic Velocity		2975.00 ft	
		Formation Depth	
		1290.12 ft	
		2958.00 ft	



Group: Oxy Usa Ulysses Wells Well: Rixon B-2 (acquired on: 02/14/16 13:10:18)



Formation Submergence	439 ft
Total Gaseous Liquid Column HT (TVD)	438 ft
Equivalent Gas Free Liquid HT (TVVD)	
Acoustic Test	
Saul Hernandez-Tech	
Acoustic Velocity	1290.12 ft/s
Joints Per Second	20.3488 1/s
Depth to liquid level	2535.72 ft
Automatic Collar Count	Yes
Joints counted	70
Joints to liquid level	79.9913
Filter Width	18.4499
Time to 1st Collar	0.288
	22.4499
	3.728

Conservation Division
District Office No. 1
210 E. Frontview, Suite A
Dodge City, KS 67801



Phone: 620-225-8888
Fax: 620-225-8885
<http://kcc.ks.gov/>

Jay Scott Emler, Chairman
Shari Feist Albrecht, Commissioner
Pat Apple, Commissioner

Sam Brownback, Governor

February 16, 2016

Katherine McClurkan
Merit Energy Company, LLC
13727 Noel Road, Suite 1200
Dallas, TX 75240

Re: Temporary Abandonment
API 15-067-20432-00-00
Rixon B 2
NW/4 Sec.27-27S-35W
Grant County, Kansas

Dear Katherine McClurkan:

"Your temporary abandonment (TA) application for the well listed above has been approved. In accordance with K.A.R. 82-3-111 the TA status of this well will expire 02/16/2017.

- * If you return this well to service or plug it, please notify the District Office.
- * If you sell this well you are required to file a Transfer of Operator form, T-1.
- * If the well will remain temporarily abandoned, you must submit a new TA application, CP-111, before 02/16/2017.

You may contact me at the number above if you have questions.

Very truly yours,

Michael Maier"