



TEMPORARY ABANDONMENT WELL APPLICATION

All blanks must be complete

OPERATOR: License# _____
Name: _____
Address 1: _____
Address 2: _____
City: _____ State: _____ Zip: _____ + _____
Contact Person: _____
Phone:(_____) _____
Contact Person Email: _____
Field Contact Person: _____
Field Contact Person Phone: (_____) _____

API No. 15- _____
Spot Description: _____
____ - ____ - ____ - ____ Sec. _____ Twp. _____ S. R. _____ E W
_____ feet from N / S Line of Section
_____ feet from E / W Line of Section
GPS Location: Lat: _____, Long: _____
(e.g. xx.xxxxx) (e.g. -xxx.xxxxx)
Datum: NAD27 NAD83 WGS84
County: _____ Elevation: _____ GL KB
Lease Name: _____ Well #: _____
Well Type: (check one) Oil Gas OG WSW Other: _____
 SWD Permit #: _____ ENHR Permit #: _____
 Gas Storage Permit #: _____
Spud Date: _____ Date Shut-In: _____

	Conductor	Surface	Production	Intermediate	Liner	Tubing
Size						
Setting Depth						
Amount of Cement						
Top of Cement						
Bottom of Cement						

Casing Fluid Level from Surface: _____ How Determined? _____ Date: _____
Casing Squeeze(s): _____ to _____ w / _____ sacks of cement, _____ to _____ w / _____ sacks of cement. Date: _____
(top) (bottom) (top) (bottom)
Do you have a valid Oil & Gas Lease? Yes No
Depth and Type: Junk in Hole at _____ Tools in Hole at _____ Casing Leaks: Yes No Depth of casing leak(s): _____
(depth) (depth)
Type Completion: ALT. I ALT. II Depth of: DV Tool: _____ w / _____ sacks of cement Port Collar: _____ w / _____ sack of cement
(depth) (depth)
Packer Type: _____ Size: _____ Inch Set at: _____ Feet
Total Depth: _____ Plug Back Depth: _____ Plug Back Method: _____

Geological Data:

Formation Name	Formation Top	Formation Base	Completion Information
1. _____	At: _____	to _____ Feet	Perforation Interval _____ to _____ Feet or Open Hole Interval _____ to _____ Feet
2. _____	At: _____	to _____ Feet	Perforation Interval _____ to _____ Feet or Open Hole Interval _____ to _____ Feet

UNDER PENALTY OF PERJURY I HEREBY ATTEST THAT THE INFORMATION CONTAINED HEREIN IS TRUE AND CORRECT TO THE BEST OF MY KNOWLEDGE

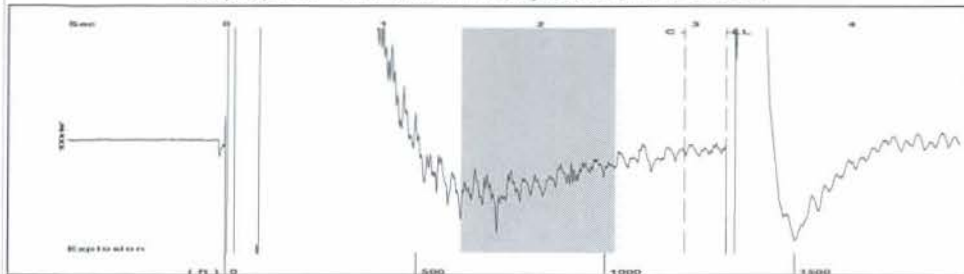
Submitted Electronically

Do NOT Write in This Space - KCC USE ONLY	Date Tested: _____	Results: _____	Date Plugged: _____	Date Repaired: _____	Date Put Back in Service: _____
	Review Completed by: _____ Comments: _____				
TA Approved: <input type="checkbox"/> Yes <input type="checkbox"/> Denied Date: _____					

Mail to the Appropriate KCC Conservation Office:

	KCC District Office #1 - 210 E. Frontview, Suite A, Dodge City, KS 67801	Phone 620.225.8888
	KCC District Office #2 / UPGS - 3450 N. Rock Road, Building 600, Suite 601, Wichita, KS 67226	Phone 316.630.4000
	KCC District Office #3 - 1500 SW Seventh Steet, Chanute, KS 66720	Phone 620.432.2300
	KCC District Office #4 - 2301 E. 13th Street, Hays, KS 67601-2651	Phone 785.625.0550

Group: MyWells Well: Santa fe 1-14 (acquired on: 01/05/16 14:59:11)



Filter Type High Pass Automatic Collar Count Yes Time 3.198 sec
 Manual Acoustic Veloc 801.517 ft/s Manual JTS/sec 12.6422 Joints 41.6279 Jts
 Depth 1319.60 ft

[1.5 to 2.5 (Sec)]



Analysis Method: Automatic

Group: MyWells Well: Santa fe 1-14 (acquired on: 01/05/16 14:59:11)



Change in Pressure 0.02 psi PT11889
 Range 0 - 7 psi
 Change in Time 0.25 min

Group: MyWells Well: Santa fe 1-14 (acquired on: 01/05/16 14:59:11)

Production
 Current Potential
 Oil - * - BBL/D
 Water - * - BBL/D
 Gas - * - Mscf/D
 IPR Method Vogel
 PBHP/SBHP - * -
 Production Efficiency 0.0
 Oil 40 deg.API
 Water 1.05 Sp.Gr.H2O
 Gas 1.13 Sp.Gr.AIR
 Acoustic Velocity 825.268 ft/s

Formation Submergence
 Total Gaseous Liquid Column HT (TVD) 3580 ft
 Equivalent Gas Free Liquid HT (TVD) 3398 ft

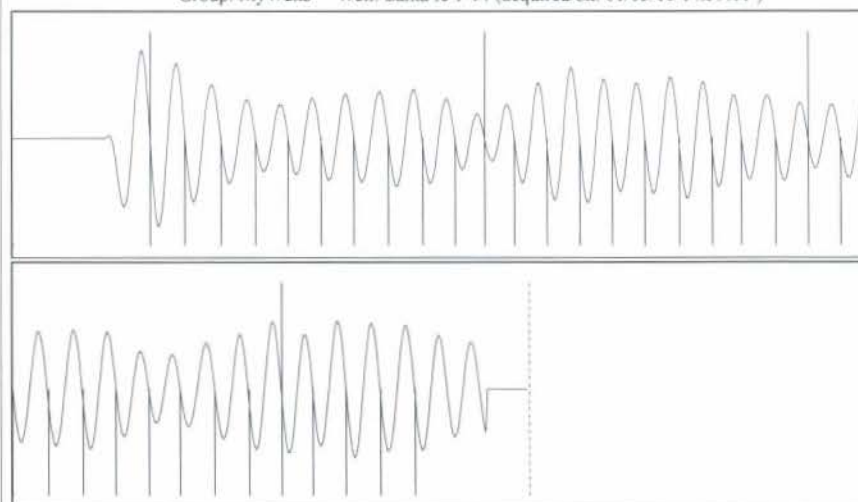
Acoustic Test

Casing Pressure 0.2 psi (g)
 Casing Pressure Buildup 0.0 psi
 0.25 min
 Gas/Liquid Interface Pressure 1.0 psi (g)
 Liquid Level Depth 1319.60 ft
 Pump Intake Depth - * - ft
 Formation Depth 4900.00 ft



Producing
 Annular Gas Flow - * - Mscf/D
 % Liquid 95 %
 Pump Intake - * - psi (g)
 Producing BHP 1554.4 psi (g)
 Static BHP - * - psi (g)

Group: MyWells Well: Santa fe 1-14 (acquired on: 01/05/16 14:59:11)



Acoustic Velocity 825.268 ft/s Joints counted 34
 Joints Per Second 13.0168 jts/sec Joints to liquid level 41.6279
 Depth to liquid level 1319.6 ft Filter Width 10.6422 14.6422
 Automatic Collar Count Yes Time to 1st Collar 0.32 2.932

Conservation Division
District Office No. 1
210 E. Frontview, Suite A
Dodge City, KS 67801



Phone: 620-225-8888
Fax: 620-225-8885
<http://kcc.ks.gov/>

Shari Feist Albrecht, Chair
Jay Scott Emler, Commissioner
Pat Apple, Commissioner

Sam Brownback, Governor

January 19, 2016

Katie Wright
Chesapeake Operating, Inc.
6100 N WESTERN AVE
PO BOX 18496
OKLAHOMA CITY, OK 73054-0946

Re: Temporary Abandonment
API 15-129-20544-00-01
SANTA FE 1-14
NE/4 Sec.14-33S-43W
Morton County, Kansas

Dear Katie Wright:

"Your temporary abandonment (TA) application for the well listed above has been approved. In accordance with K.A.R. 82-3-111 the TA status of this well will expire 01/19/2017.

- * If you return this well to service or plug it, please notify the District Office.
- * If you sell this well you are required to file a Transfer of Operator form, T-1.
- * If the well will remain temporarily abandoned, you must submit a new TA application, CP-111, before 01/19/2017.

You may contact me at the number above if you have questions.

Very truly yours,

Michael Maier"